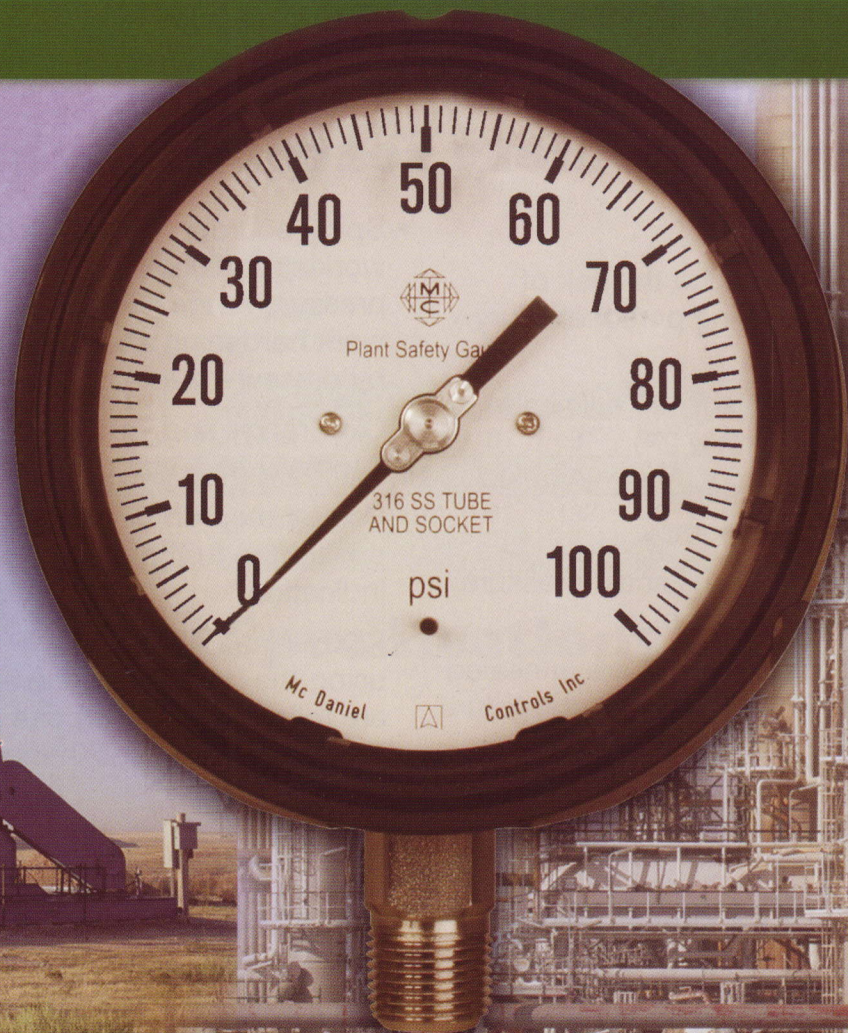


McDANIEL

4 1/2" PLANT SAFETY GAUGE



**MANUFACTURED BY:
McDaniel Controls Inc.**

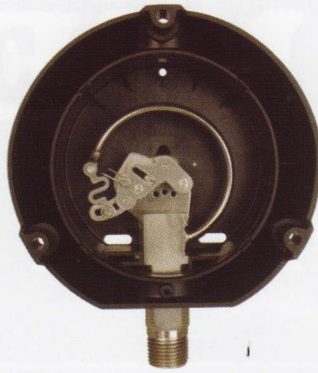
*Providing the **Ultimate** in **Safety, Durability** and **Accuracy** for over **35 Years**.*



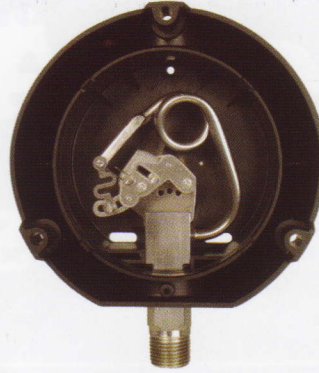
4 1/2" PLANT SAFETY GAUGE



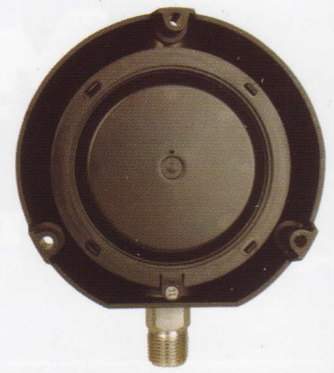
Front View



Rear View C-Tube



Rear View Spiral Tube



Blowout Back

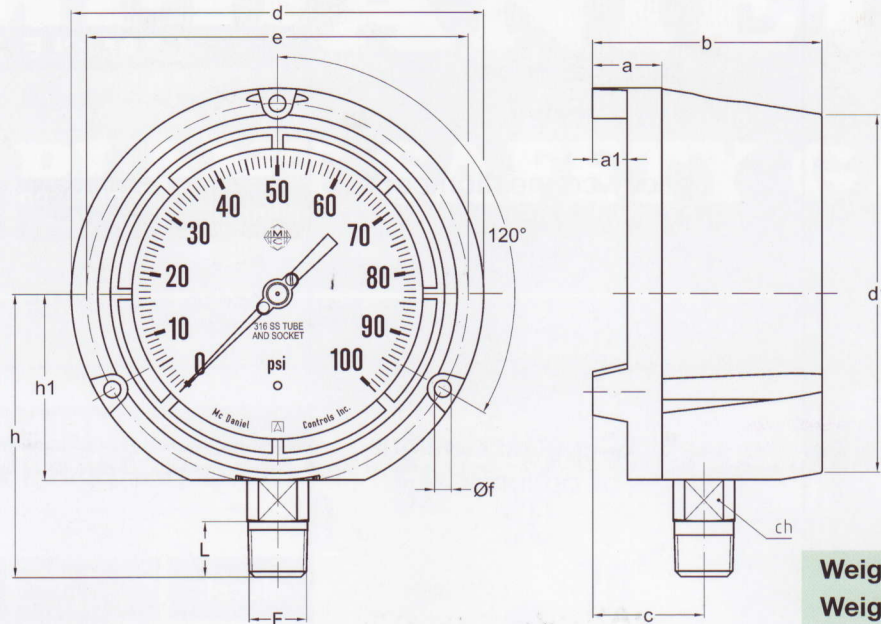
Standard Safety features include:

- Solid front/full blowout back.
- Blowout back hinged to reduce the risk of becoming a projectile causing personal injury or damage to equipment.
- Accuracy specification is 1/2 of 1% full scale pressure. (ASME B40.1 grade 2A)
- Over range of 130% full scale pressure without loss of accuracy.
- Design over range of 300% full scale pressure without rupture of Bourdon tube.
- All wetted parts (tube and socket) are annealed for stress relief to minimize bourdon tube failure possibilities.
- No pointer stop at zero position on dial to possibly create a false indication of zero pressure per ASME B40.1.
- Spiral bourdon tube, which has an effective working radius of over 1000 degrees, is used on pressure ranges 800 psi and above to reduce work hardening and/or fatigue usually caused by pressure pulsation due to severe service.
- Over range and vacuum limits included internally as a standard safety feature.
- Pointer stop on dial located at the 6 o'clock position to further reduce a possibility of a false indication.
- All threads (1/4" and 1/2" NPT) are manufactured using the best method available. The threads are rolled, for the purpose of reducing galling that can be an issue in most installation applications.

Other features include:

- Precision stainless steel series 300 movement
- Micro adjustable aluminum pointer
- Dial aluminum black on white
- Weather protected to IP 55
- Weather protected to IP 65 with optional fill kit
- Threads rolled to reduce possibilities of galling that can be a major issue in most installation applications

Dimensional Data



Weight Dry - 1.4 lbs.
Weight Filled - 2.4 lbs.
 Nominal values

		Dia.	F	d	d1	h	h1	e	c	f	b	ch	L	a	a1
1/2-14 NPT	mm	130	1/2-14 NPT	148	129	102	67	137	40	6	82,5	22	20	25	12,5
1/2-14 NPT	inch.	4 1/2"	1/2-14 NPT	5,83	5,08	4,02	2,64	5,39	1,57	0,24	3,25	0,86	0,79	0,98	0,49
1/4-18 NPT	mm	130	1/4-18 NPT	148	129	97	67	137	40	6	82,5	22	15	25	12,5
1/4-18 NPT	inch.	4 1/2"	1/4-18 NPT	5,83	5,08	3,82	2,64	5,39	1,57	0,24	3,25	0,86	0,59	0,98	0,49

Specifications

Accuracy:

0.5% full scale to ASME B40.100-2005 standard (Grade 2A)

Dial:

Aluminum alloy, black figures, white background.

Case:

Molded fiberglass reinforced thermoplastic (PP-GF20) black.

Ring:

Molded fiberglass reinforced thermoplastic (PP-GF20) black.

Pointer:

Aluminum alloy, painted black. Micrometer adjustable.

Lens:

Polycarbonate
(Polymethylmethacrylat PMMA)

Movement:

Precision stainless steel series 300.

Bourdon Tube:

316 Stainless Steel annealed for stress relief (C Form 600 PSI & Below, Spiral 800 PSI & Above)

Blow-out Back:

Polyacetale (POM), black
Hinged for safety (will not become a projectile).

Stem and Socket:

316 stainless steel
Bottom connection (1/4", 1/2" NPT or Metric)
High quality "rolled" threads (Helps to prevent galling).

Options:

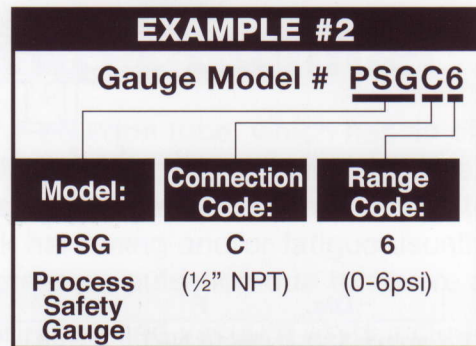
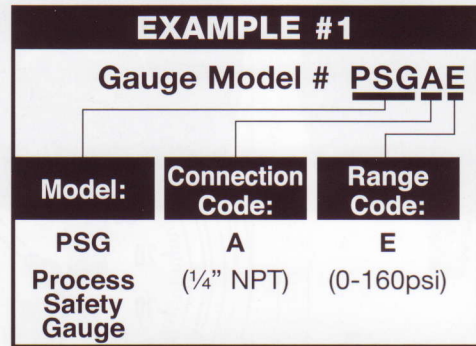
- Liquid fill kit (dealer installed)
- Laminated safety glass lens (dealer installed)
- Metric connections (BSPP, BSPT, 1/4, 1/2, minimum quantities required)



How to order

Range code	Range psi
6	0 - 6
10	0 - 10
A	0 - 15
B	0 - 30
C	0 - 60
D	0 - 100
E	0 - 160
F	0 - 200
G	0 - 300
H	0 - 400
I	0 - 600
J	0 - 800
K	0 - 1000
L	0 - 1500
M	0 - 2000
N	0 - 3000
4k	0 - 4000
O	0 - 5000
6k	0 - 6000
P	0 - 10000
Q	0 - 15000
R	0 - 20000
S	VAC 30"Hg -0
T	REC 3 - 15
U	30"Hg + 15
V	30"Hg + 30
W	30"Hg + 60
X	30"Hg + 100
Y	30"Hg + 160
2k	30"Hg + 200
Z	30"Hg + 300

- 1 - Select the model number (**PSG**)
- 2 - Specify connection code ("**A**" = 1/4" NPT)
 ("**C**" = 1/2" NPT)
- 3 - Specify range code from list at left.
- 4 - Specify special configurations or options.



(Fill kit available, dealer installed)

Since 1972 McDaniel Controls has made safety and quality the two most important concerns in manufacturing and product offering. We offer many other Safety Gauges which include sizes 2 1/2", 4", 4 1/2", and 6" solid front blow out back for many other applications with safety and quality the primary consideration.

DISTRIBUTED BY

P. O. Box 187, Luling, LA 70070 • 14148 Highway 90, Boutte, LA 70039 U.S.A.
 (985) 758-2782 • New Orleans (504) 467-1333 • Fax (985) 758-1688
 www.mcdanielcontrols.com

McDaniel Controls, Inc.