

HYGIENIC DIAPHRAGM SEAL

REOTEMP's Series DSHS Diaphragm Seals incorporate a number of various connections used in the sanitary and hygienic markets. Ideal for applications in the Pharmaceutical, Dairy, and Food & Beverage market, the Series DSHS provides convenient diaphragm seal replacement for European and specialty sanitary connections. Reotemp will mount and fill a variety of instruments to these Hygienic Diaphragm Seals including Mechanical and Digital Pressure Gauges, Transmitters, and Switches.



DN 40 Female



1½ SMS Male

DIAPHRAGM SEALS

SPECIFICATIONS



Materials Body: 316L
Diaphragm: 316L
Nut: 304SS

Wetted Part Surface 18-24 Ra

Process Temperature Limits

Process Connection	DN25/1"	DN32/ DN40/1.5"	DN50/2"	DN65/2.5"	DN80/3"
Process Temperature Limits	-20/160F	-40/250F	-40/400F	-40/750F	-40/750F

Ambient Temperature Limits Determined by Instrument.

Minimum Recommended Span

Process Connection	DN25/1"	DN32/ DN40/1.5"	DN50/2"	DN65/2.5"	DN80/3"
2.5" & 3.5" Gauges	60psi	30psi	15psi	15psi	100" WC
4", 4.5", & 6" Gauges	n/a	n/a	60psi	15psi	100" WC
Transmitter (Gauge Pressure)	30psi	15psi	5psi	50"WC	30" WC
Transmitter (Differential Pressure)	n/a	n/a	10psi	150"WC	50" WC
Maximum Working Pressure	See Table Drawing				

HYGENIC DIAPHRAGM SEAL

HOW TO ORDER: Choose options to build a part number. For example: **DSHSWD40FSS-DWD-BN-TS**

DSHS

W

D40F

SS

-DWD

DIAPHRAGM SEALS

MODEL	INSTRUMENT CONNECTION	STYLE AND SIZE	BODY AND DIAPHRAGM MATERIAL	MOUNTING
DSHS = Diaphragm Seal, Hygenic Connection	W = Low-Volume, Weld Fitting 4 = 1/4" NPT 2 = 1/2" NPT B = 1/2" BSP	<u>DIN - EN11851</u> D25F DN25, Female Swivel Nut D32F DN32, Female Swivel Nut D40F DN40, Female Swivel Nut D50F DN50, Female Swivel Nut D65F DN65, Female Swivel Nut D80F DN80, Female Swivel Nut D40M DN40, Male Thread D50M DN50, Male Thread <u>SMS - Standard 1145</u> S10F 1", Female Swivel Nut S15F 1.5", Female Swivel Nut S20F 2", Female Swivel Nut S25F 2.5", Female Swivel Nut S30F 3", Female Swivel Nut S15M 1.5", Male Thread S20M 2", Male Thread <u>*Varivent (Tuchenhagen) Compatible</u> F66M Form F, 66mm diameter N84M Form N, 84mm diameter	SS = 316L SS **Other material available, please inquire with factory	-DWD = Direct Mount, All Welded -DTD = Direct Mount, Threaded (not standard for sanitary applications) -RTR = 6" Cooling Tower, Welded -STW = 3" Cooling Standoff -WXX = PVC Coated SS Armored Capillary, Welded to Seal, XX = length in feet See Page 57 for Complete Mounting Guide -YY = No Instrument Mount, Dry Seal Only

-BN

-TS

FILL FLUID

OPTIONS

- AG = Glycerin
- BN = NEOBEE M20
- AS = Silicone DC200
- BS = Food-Grade Silicone

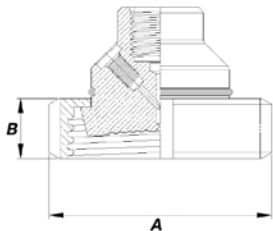
See Page 58 for Complete Fill Guide

-XX = No Fill Fluid

- TC = PTFE Coated Diaphragm
- TS = SS Tag (1-10 Characters)
- MR = Mill Test Report
See pg. 55 for Smart Transmitter Attachment Codes
- EP = Electropolished Diaphragm
- OX = Cleaned for Oxygen or Chlorine Service (shipped in sealed bag)
- TS = SS Tag (1-10 Characters)

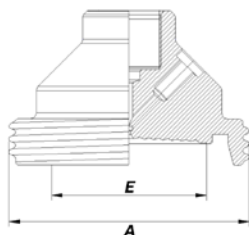
*Varivent is a registered trademark of (Tuchenhagen) GMBH

D.1 DIN - EN11851 Female



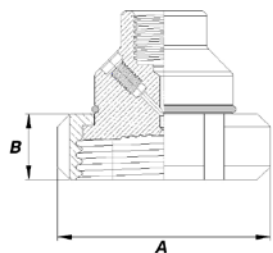
Part Code	DN25F	DN32F	DN40F	DN50F	DN65F	DN80F
Size	DN25	DN32	DN40	DN50	DN65	DN80
Outer Diameter (A)	63	70	78	92	112	129
Connection Height (B)	21	21	21	22	25	29
MWP (PSI)	600	600	600	400	400	400

D.2 DIN - EN11851 Male



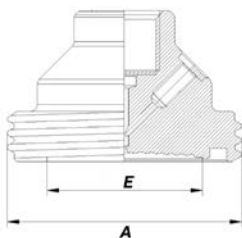
Part Code	D40M	D50M
Size	DN40	DN50
Outer Diameter (A)	65	78
Diaphragm Surface (E)	38	50
MWP (PSI)	600	400

D.3 SMS - Standard 1145 Female



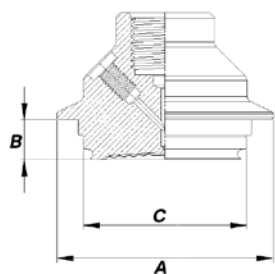
Part Code	S10F	S15F	S20F	S25F	S30F
Size	1"	1½"	2"	2½"	3"
Outer Diameter (A)	51	74	84	100	114
Connection Height (B)	19	23	24	28	31
MWP (PSI)	600	600	600	400	400

D.4 SMS - Standard 1145 Male



Part Code	S15M	S20M
Size	1½"	2"
Outer Diameter (A)	60	70
Diaphragm Surface (E)	34	46
MWP (PSI)	600	600

D.5 Varivent (Tuchenhagen) Compatible



Part Code	F66M	N84M
Size	Form F	Form N
Outer Diameter (A)	66	84
Connection Height (B)	12.3	12.3
Connection Diameter (C)	50	68
MWP (PSI)	600	600

*All dimensions in mm