

Combi Gauges for Rail Cars

With two measuring units

DRChg
125 – 1 Fz

Application

Pressure gauges model DRChg 125 – 1 Fz rmBFr are used for the measurement of two different pressures and are applied in rail cars, especially for air brake systems.

The instruments are provided with u-clamps for panel mounting and with direct and indirect lighting as combi gauges.

Construction

The pressure gauges are provided with two independently working Bourdon tube measuring systems. Each system has a separate pressure connection. A movement with separate pointer shafts transfers the motions of the Bourdon tubes caused by pressure onto the respective pointer.

Standard Version

Accuracy

Class 1.0 separate for each measuring system

Position of Installation

90°

Case

Stainless steel 304 (1.4301)
with crimped-on ring, aluminum, black anodised

Temperature Limitation

Storage temperature –40 °C to +70 °C (–40 °F to +158 °F)

Ambient temperature –40 °C to +60 °C (–40 °F to +140 °F)

Medium temperature max. +60 °C (+140 °F)

Degree of Protection (DIN EN 60 529 / IEC 529)

IP54 in front of the panel

Blow-out Device

Blow-out plug in the back of the case

Lighting

Direct 2 light bulbs 24 V / 2 W and

Indirect via light slits in the case

Nominal Case Size

125 mm (5")

Wetted Parts

Connection brass

Bourdon tube bronze, soft soldered, c-form

Case Configuration

Position of the connection centre back connection,
parallel one above the other (rm)

Mounting device u-clamp for panel mounting (BFr)

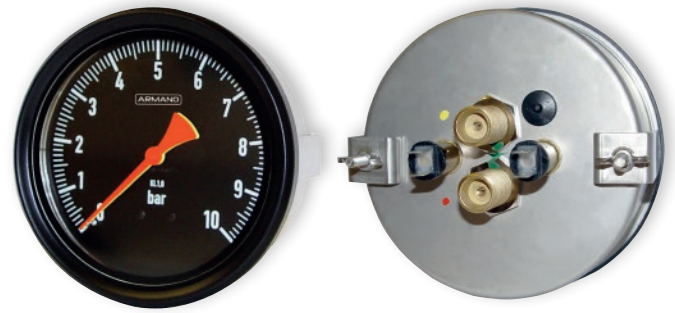
Pressure Range

0 – 10 bar

Process Connection

2 x M 16x1.5 with chuck cone for cutting ring
L10 according to DIN EN ISO 8434-1

Including restrictor screw in each pressure inlet port, orifice Ø 0.8 mm (0.03"). Each process connection is marked with a coloured dot, matching the colour of the pointer.



Window

Reflex-reduced laminated safety glass

Movement

Brass/German silver

Dial

Aluminum black, scale white, stop pin at 0 bar (zero stop)

Pointers

Aluminum, 1 pointer yellow (RAL 1016), 1 pointer luminous bright red (RAL 3026)

Safety Category According to DIN EN 837-1

S1 pressure gauges with blow-out device

Options and Special Versions

- Instruments without combi lighting, i.e. only direct lighting, only indirect lighting or unlit
- Pressure range 0 – 16 bar
- Other than vertical installation
- Process connection with cutting ring and union nut
- Restrictor screw brass, orifice Ø 1.0 mm (0.04"), in the pressure inlet port
- Other pointer colours, e.g. white (RAL 9010)
- Dial inscription (ZA) as required, colours matching the pointer
- Coloured marks matching the pointers
- LED lighting BA9s, 18–32 V, white or green
- Other position of connection, lower back connection (r)

Special Versions Upon Request

- Other process connections
- LED lighting BA9s for operating voltages of more than 32 V up to max. 130 V

Ordering Information

Please specify in your order:

Basic model DRChg 125 – 1 Fz rmBFr
Pressure range 0 – 10 bar
Process connection L10
Pointer colour front pointer: luminous bright red or yellow
rear pointer: luminous bright red or yellow
Specifics see above

Example DRChg 125 – 1 Fz rmBFr, 0 – 10 bar,
L10, front pointer luminous bright red,
rear pointer yellow

ARMANO

ARMANO Messtechnik GmbH

Location Beierfeld

Am Gewerbepark 9 • 08344 Grünhain-Beierfeld
Tel.: +49 3774 58 – 0 • Fax: +49 3774 58 – 545
mail@armano-beierfeld.com

Location Wesel

Manometerstraße 5 • 46487 Wesel-Ginderich
Tel.: +49 2803 9130 – 0 • Fax: +49 2803 1035
mail@armano-wesel.com

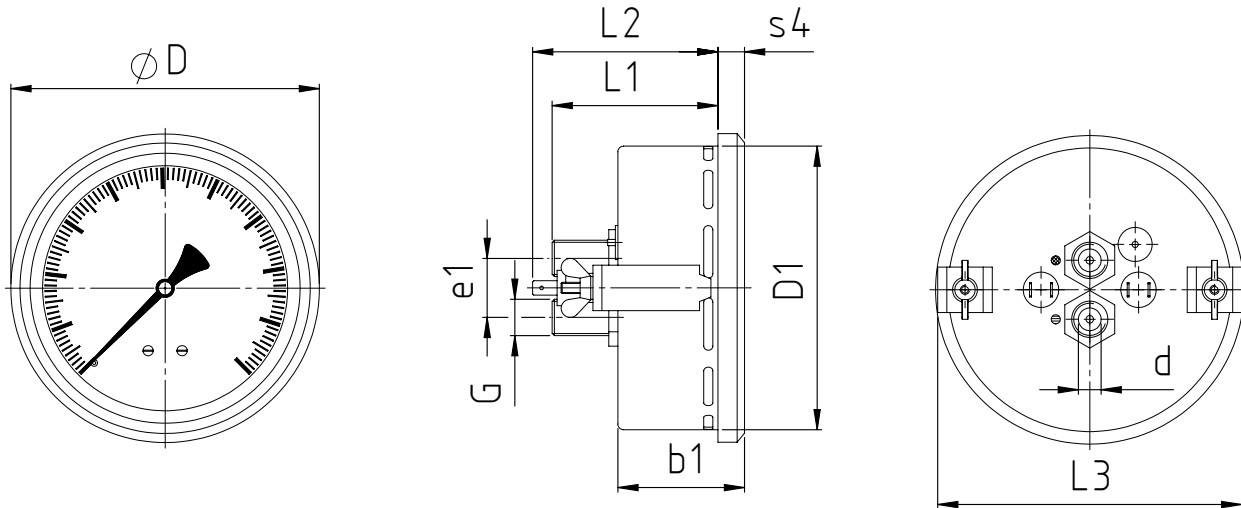
www.armano-messtechnik.com

5901.1

03/22

Case Configuration, Dimensional Data and Weight

DRChg 125 – 1 Fz rmBFr



Dimensional Data (mm/inch) and Weight (kg/lb)

NCS	b1	D	D1	process connection DIN EN ISO 8434-1		e1	L1	L2	L3	s4	recommended panel cut out \varnothing	approx. weight
				d ^{B11 1)}	G							
125	56	136	125	L10	M16x1.5	26	74	83	134	11	128 ± 1	0.93
5	2.2	5.35	4.92			1.02	2.91	3.27	5.28	0.43	5.04 ± 0.04	2.05

¹⁾ Tolerance class according to ISO 286-2