

AZTRON 

SURFBOARD USER GUIDE



EN

RIDE INTELLIGENTLY / [AZTRONSPORTS.COM](https://www.aztronsports.com)

WELCOME

Thank you for choosing an AZTRON board. This board was built in accordance with strict quality standards and premium craftsmanship. We hope you thoroughly enjoy this product. Please take the time to read the content in this manual in order to optimize your satisfaction of this product. We believe that an AZTRON board offers incomparable value.

We wish you years of enjoyment and rewarding experience with the AZTRON product.

INDEX

2. Info and Serial Number
3. Safety Precautions
5. How Attach Surfboard Leash
6. Transportation, Care, Maintenance and Storage
7. Limited Warranty

All data subject to change @ AZTRON 2023
AZTRON is a registered trademark of Aztron Sports.

Follow us at @aztronglobal   
WWW.AZTRONSPORTS.COM

IMPORTANT INFORMATION

Model:

Date of Purchase:

Dealer Name:

Province/State:

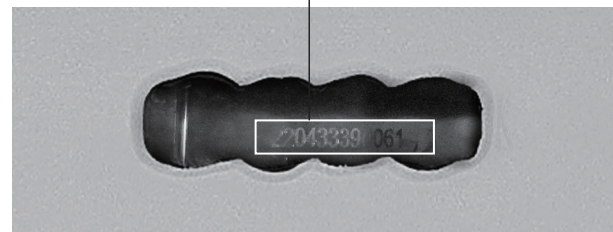
Country:

Item No:

Serial #:

WHERE IS THE SERIAL NUMBER

You can find the serial number on the carrying handle. It is a 12-character long.



SAFTY PRECAUTIONS

Water sports can be very dangerous and physically demanding. There is a risk of serious injury or death from drowning. The user of this product acknowledges, understands, and assumes the risk involved in water sports. Observe the following safety standards and safe operating practices whenever using this product.

When using an AZTRON board, you are personally responsible to determine if you have the required skill level to handle the different water and wind conditions. You should use your best judgement as to when and where to use your board. All users of an AZTRON board agree to assume all responsibilities for any damage or injury, including death, which may result from using or handling a surf SUP or surf board. We strongly recommend taking a course with an experienced surf board instruct or on proper surfing techniques, boating security and first aid before handling and using your board

EVERYONE using the board must read WARNINGS, CAUTIONS and NOTES very carefully.

WARNING

A WARNING indicates a hazardous situation which, if not avoided, could result in death or serious injury.

CAUTION

[Redacted content]

NOTE

A NOTE provides useful information and suggestions to make better use of your board.

1. Weather conditions and water levels

WARNING

- Check weather conditions and water levels before heading out.
- Never use your board when weather of water conditions (wind, heavy rain, flooding, choppy water or strong current) can impact your ability to steer your board. Head to shore as soon as possible if you already are on the water.

2. Safety device

WARNING

- Always wear an approved personal floatation device (PFD). Before you start surfing, read the manufacturer's documentation about your PFD and familiarize yourself with how to properly wear it.
- Always wear a safety leash.

3. Alcohol and drugs

WARNING

- Never use or consume alcohol, drugs or any other mind altering substance that may affect your condition, judgement or ability to safely and securely operate your board.

4. Ability

WARNING

: [Redacted content]

5. Preparation

CAUTION

- Check your equipment prior to each use of signs of wear or failure.

6. Hypothermia

WARNING

- Dress properly for weather conditions and, if necessary, wear a wetsuit.
- Accident in cold water are very dangerous. The loss of body heat due to immersion in cold water (hypothermia) can be fatal as survival time in cold water can be as little as 15 to 20 minutes.

7. Always familiarize yourself with the body of water you intend to navigate

WARNING

- Scout unfamiliar water.
- Find out what hours boating is permitted, if there are any known hazardous conditions and where to get help quickly if there is an emergency or accident.
- Check tidal changes and currents specific to your location. If you decide to go down rapids, you need to scout in advance and, if necessary, portage your board to avoid unfamiliar or dangerous areas.

8. Regulations and laws

CAUTION

- Always follow Coast Guard regulations, boating and safety laws, and regulations and orders of various levels of government (including regional).

WARNING

- NEVER let minors use this surfboard without adult supervision.
- NEVER tow this surfboard behind a boat.
- NEVER use this surfboard as a personal floating device.
- NEVER exceed this board's maximum weight.

HOW TO ATTACH SURFBOARD LEASH

Note it is very important to wear the safety leash all the time. Make sure the leash cord does not reach the rail part of the surfboard. The length of the loop should be enough that it should allow the rail saver of the leash to rest safely on the board rail.



1. Inspect the leash to make sure there are no knots in the leash cord. Leaving a surfboard leash knotted will cause it to break under high stress.



2. Attach the leash into the surfboard. Make sure that the cord is straightened out, pinching together the edge that is opposite the knot. Thread the edge right into the leash plug, passing through the other side. Connect the Velcro leash into the leash cord. The Velcro leash has to be threaded right into both of the loops of the leash cord rather than just slipping it into itself. This offers the strongest and reliable attachment.

Make sure the leash cord is facing outside the ankle and towards the back. This will prevent you from getting your other foot caught in the leash when trying to pop up.



3. Strap the leash as far down on your ankle as you can. If strapped on too high it can slide down and spin around your ankle causing you to trip over the leash. Fasten the leash around your ankle securely. If the leash spins around the ankle then it is not tight enough. The Velcro strap should be lined up on both sides for the strongest hold.

TRANSPORTATION

You can easily transport your board with the carrying handle located in the center of the board.

By Hand:

- Carry the board by using the carrying handle.
- If necessary, use a transport cart to help with the transport.

NOTE

Avoid keeping the board attached to your vehicle for an extended period of time, especially when exposed to the sun. This could distort the shape of the board over time.

By Vehicle:

- When strapping to the top of your car, place the board underside up. Placing the top side up may generate wind drag and instability when driving. Place the front or the back of the board forward are both acceptable.
- Overtightening straps may result in pressure dings.
- Use padded strap instead of non-padded nylon straps.



CARE AND MAINTENANCE

- The best way to clean your board is to rinse it with fresh water to remove sand and saltwater deposits. Do not use abrasives.
- Inspect your board for dings and cracks before and after each use. The EPS Core of your board is highly absorbent and acts as a sponge when protective watertight epoxy skin is compromised.
- Minor abrasions, dents, wearing off and scratches are normal and will not impact your board's performance.

STORAGE

- Keep your board in a well-ventilated and shaded area when you do not use it. Your board can be damaged if it is exposed to direct sunlight for a period of time.
- Limited exposure of the deck-side of the board to direct sunlight. While in use, water flowing over the deck helps regulate surface temperature. However, when the deck traction pad is dry, the heat absorption effect is amplified when exposed to direct sunlight.
- At approximately 74°C/165°F, the EPS foam begins outgassing, becomes unstable and delaminates.
- Leaving your board in a vehicle during the day, even on a mild day, increases the risk of delamination.
- Do not store your board in a gear bag for extended period of time. Surf gear bags are intended for transportation only, not for full time storage. Prolonged storage of a wet surfboard in a wet bag may lead to the possibility of mold and osmotic blisters.

LIMITED WARRANTY



AZTRON SPORTS offers a 365 days limited warranty from the date of purchase against defects in materials and workmanship. This warranty is subject to the following limitations.

1. The warranty is valid only when the warranty card is completed and returned within 30 days of date of purchase.
2. The warranty is valid only when this product is used for normal recreational paddling activities and does not cover products used in rental or other commercial use.
3. Aztron will make the final warranty determination, which may require inspection and/or photo of the board, which clearly show the defect(s). If necessary, this information must be sent to the Aztron distributor in your country with prepaid postage. Products can be returned only if a return authorization number is given in advance by Aztron distributor. The return authorization number must be clearly labeled on the outside of the package, or it will be refuse.
4. If a product is deemed to be defective by Aztron, the warranty covers the repair or replacement of the defective product only. Aztron will not be responsible for any costs, loses, or damage incurred as a result of loss or misuse of the product.
5. This warranty does not cover products that have been damaged by negligence, misuse or accident, or wear due to owner's failure to provide reasonable and necessary maintenance.
6. This warranty does not cover if the products modified or repaired by unauthorized persons.
7. This product must not be used in excess of the manufactures recommended maximum load capacity.
8. This warranty does not cover if it changes to the board appearance due to normal wear, sun exposure or any other environment conditions.
9. The original purchase receipt must accompany all warranty claims. The name of the retailer and date of purchase must be clear and legible.

You must provide an authorization number when returning a product for replacement or repair. AZTRON SPORTS will not accept a return without it.

This warrant is the sole and exclusive warranty by AZTRON SPORTS, in connection with this surfboard. AZTRON SPORTS offers no warranty or representation, expressed or implied (including, without limitations, merchantability or fitness for a particular purpose), with the exception of those that are specifically included in this warranty.

All incident and/or consequential damages are excluded from this warranty.

WARRANTY REGISTRATION CARD

Date of Purchase: _____ Model: _____

Serial Number: _____

Dealer/Store Name: _____

Dealer/Store Address: _____

State/Province: _____ Zip/Postal Code: _____

Country: _____ Mr. Mrs. Ms.

Surname: _____ Name: _____

Address: _____

State/Province: _____ Zip/Postal Code: _____

Country: _____

Telephone Number: () _____

Email: _____



AZTRON[®]

2023 Version

RIDE INTELLIGENTLY / [AZTRONSPORTS.COM](https://aztronsports.com)

AZTRON SPORTS (SHANGHAI) CO.,LTD