



CLA LIGHTING
UNIT 2/16 ADA AVENUE BROOKVALE NSW 2100
Phone:(02) 9938 7100 Fax:(02) 9938 7115
Email: sales@clalighting.com.au

USER MANUAL

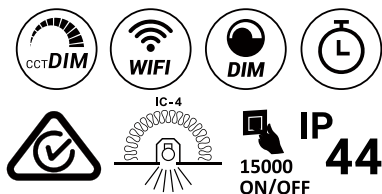
Safety Instructions

To ensure correct function and safety, please read and follow all instructions carefully before using the product.

- * This product must be installed by a qualified electrician according to AS/NZS 3000.
- * Ensure the mains supply is disconnected and there is no power on the circuit prior to starting installation.
- * The light source and LED driver of this product are not replaceable.

LED

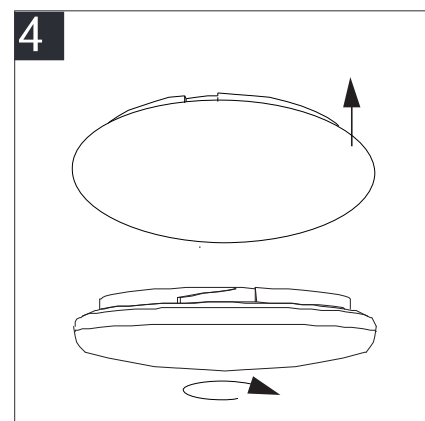
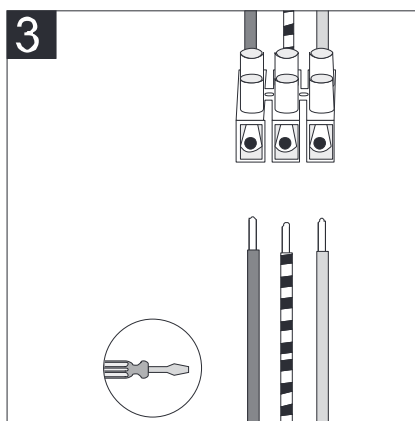
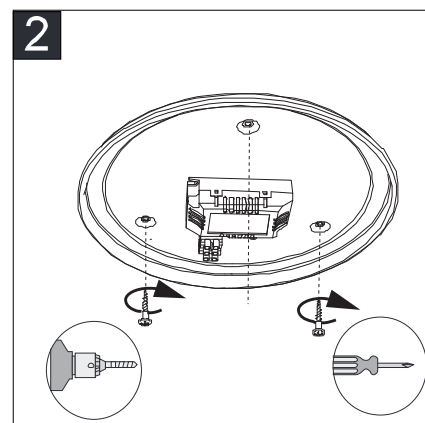
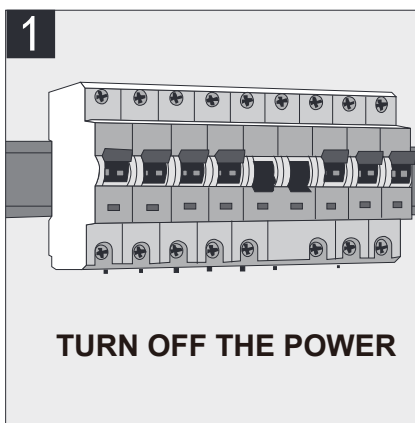
Smart LED OYSTER SMT0YS1



Get Ready

- 1.Know the Wi-Fi network and password.
- 2.Make sure the mobile device is running iOS 8 or higher; Android 4.1 or higher.
- 3.Make sure the Wi-Fi network is 2.4GHz.

Installation for LED oyster



Installation for App

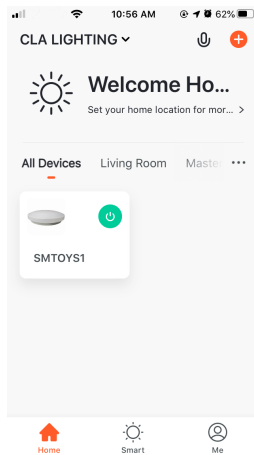
- 1.Download and register the APP.
- 2.Sign in the APP with your account & password.
- 3.Connect the lighting with APP.
- 4.Enjoy the remote control anywhere.



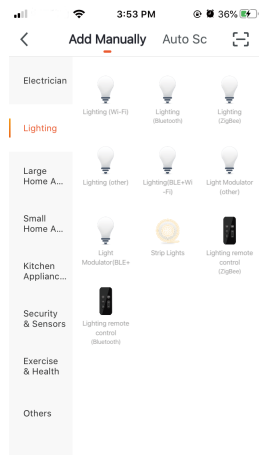
**NO HUB
REQUIRED**

1

1. Enter the app as picture 1.
2. Press the +(add) button at right upper corner.
3. Enter Lighting page, press Lighting (Wi-Fi) as picture 2.



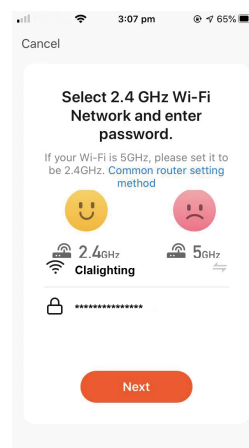
picture 1



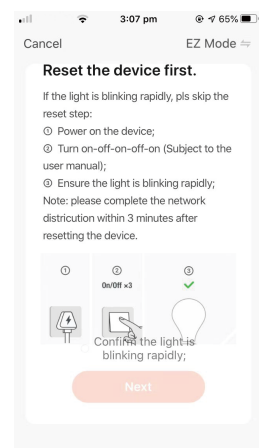
picture 2

2

4. Enter Wi-Fi password as picture 3.
5. Reset the device first as picture 4.



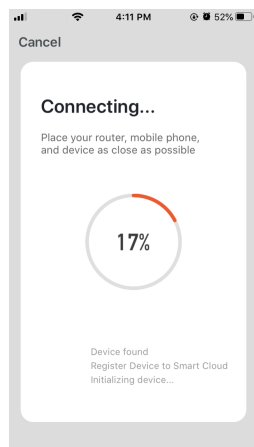
picture 3



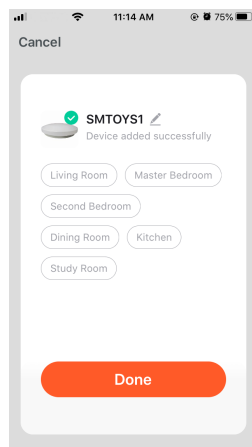
picture 4

3

6. Connecting process until 100% as picture 5.
7. Device added successfully. We can name the device, add to different group etc, as picture 6.



picture 5



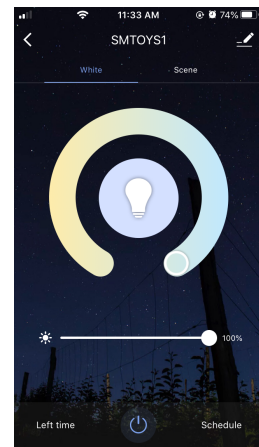
picture 6

4

8. Enjoy the free control of the light, dimming, changing color, scene mode etc, as picture 8.



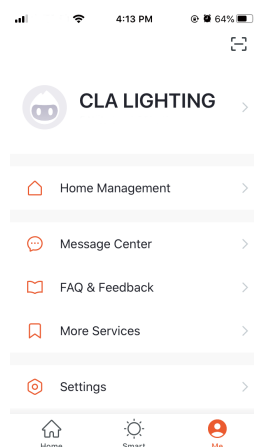
picture 7



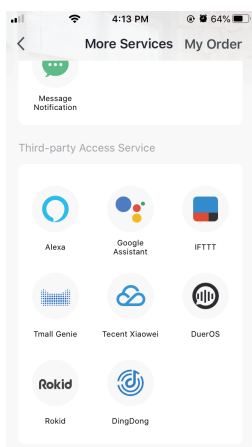
picture 8

5

9. Support voice control through Google Assistant, Amazon Alexa, IFTTT etc, as picture 9 and 10.



picture 9



picture 10