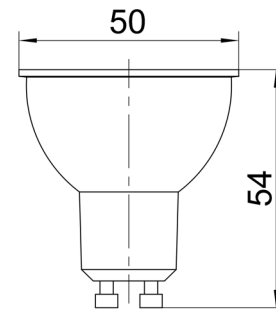
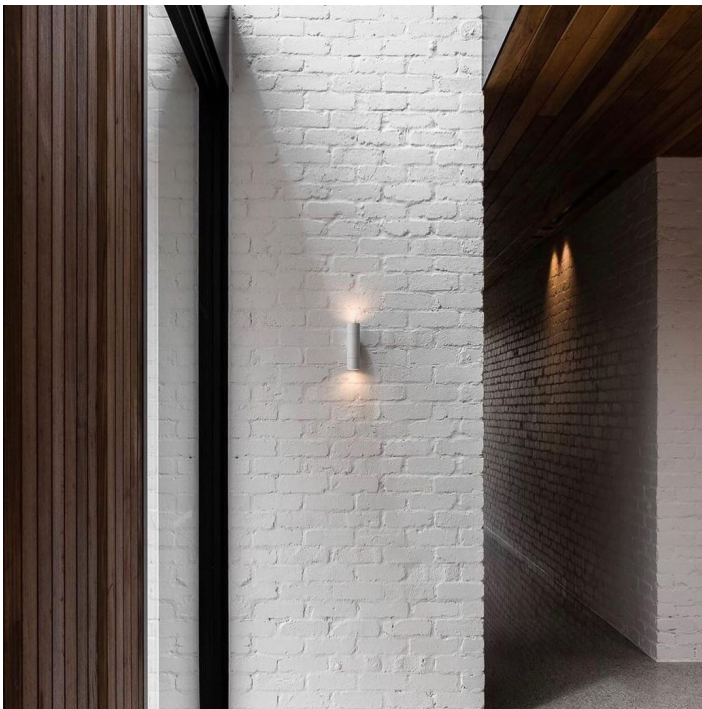
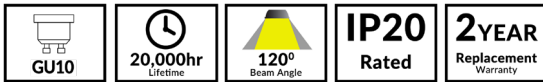


GU10 LED Globe

- Input voltage: 240V AC 50/60Hz
- Housing: plastic
- Heat sink: PBT + Aluminium alloy
- White diffuser: plastic
- LED chips: 8pcs SMD2835
- Power factor: ≥ 0.5
- CRI: >80
- Ambient temperature: -20 to 40°C
- Not suitable for dimming
- Suitable for 2 way switching
- Suitable for use with sensors



Globes - LED



Part No.	Description	Kelvin	Lumens	Watt	CRI	PF	Dimension	Weight	Box Size	Carton Qty
GU1001A	GLOBE LED GU10 6W 3000K FR Wh 470 Lm	3000K	470lm	6W	>80	≥ 0.5	$\text{Ø}50 \times 54\text{mm}$	0.04kg	5.3x5.3x6cm	1/10/100