

Classico & Moderno with Recessed Wall Plate [Standard Size]

Index # 44, Rev-12 / 28-March-2014 / Page 1 of 2

CVO Fire : 01325-301020 : www.cvo.co.uk : sales@cvo.co.uk

GAS FIRE OPTIONS:

- This system is designed to fit the "Standard Size" version of the **MODERNO** or **CLASSICO**.
- Visit the website [www.cvo.co.uk] to view the full details of the gas fire and option.

RECESS SYSTEM:

- The CVO recess system allows the fire to be set into the wall, to comply with the CE approval the complete CVO system must be used. When using the recess plate the fire is fitted with a special heat deflector gather. It is not possible to recess the standard wall mounted fire without the recess and the deflector. The deflector is supplied free of charge with the recess plate. The recess plate must be ordered at the same time as the fire for the deflector to be fitted at the factory.
- The recess can be supplied in Stainless Steel, Black, White or Cream Powder Coated. Other colours upon request.

GAS FIRE CE APPROVAL:

- Full CE approval for installation to any EU country.
- Gas Categories : Natural Gas = I2H, I2E, I2E+, I2L. LPG/Propane = I3P, I3B/P, I3+

INLET POWER, ROOM INTERNAL SPACE AND FREE AIR VENT

Gas Type	Fire Heat Input Version		"Minimum" Internal Room Space	Required Free Air Wall Vent	Approx Running Cost
	HIGH	LOW			
Natural Gas – 2.7kW	2.7 kW	2.0 kW	30 m3	100 cm2	9p/Hour *
Natural Gas – 3.5kW	3.5 kW	2.7 kW	40 m3	125 cm2	12p/Hour *
LPG/Propane – 3.5kW	3.5 kW	2.7 kW	40 m3	125 cm2	21p/Hour **

* Based on approximate figures as gas prices are variable.

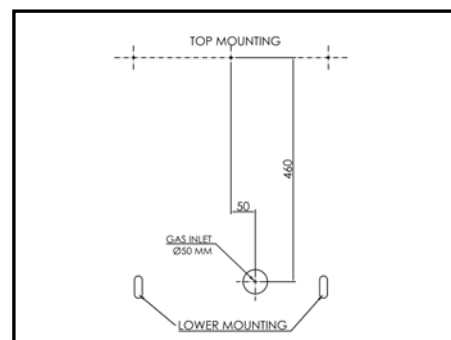
** Based on a 47Kg Bottle at £39.99/Bottle.

CONSTRUCTION DIMENSIONS:

- Approximate Dimensions:** HEIGHT: 950mm x WIDTH: 1200mm x DEPTH: 170mm. [see note +/- 10mm tolerance]
- An allowance is required around the recess plate for adjustment and for gas pipe work.

OTHER TECHNICAL INFORMATION:

- The recess must be mounted within a non-combustible chamber manufactured from a heatproof material like Mylux.
- There must be no voids behind the fire as this will cause noise and banging.
- Flueless Gas Fires are classed as a decorative, secondary heat source.
- This type of fire requires a fresh air wall vent that must be positioned at least 1m away from the appliance.
- This appliance must be installed in a room with a window and cannot be used in basements, bathrooms or bedrooms.
- This type of installation may not be suitable for some users as consideration must be made for access to the gas control valve which is hidden by the fascia. If in doubt visit the showroom and view the installation before purchasing.
- This fire has a minimum room size requirement in cubic meters (m3).
 - The fire must not be installed in a room smaller than specified.
 - If the room is larger than the specified minimum it still must have an air vent in the room.
 - The internal space of the room must be calculated; adjoining spaces not separated by a door may be included. Example 2.5m x 4m x 4.5m = 45m3. When calculating room sizes please make an allowance for the amount of furniture you will have in the room as this will reduce the volume available for the fire.
 - If the room size is smaller than 100m3 it is advised to purchase the 2.7Kw version.
- The fire is supplied with a manual ignition system as standard.



=====
CVO reserve the right to amend and improve the specification sheets without prior notice. If in doubt about any aspect of this specification please call. The specification is not to be used to install the fireplace. Every fire is supplied with an official install booklet. Spirit Fires Limited own the Spirit, CVO and Firevault Trademarks. Copying and distribution of these specifications is not permitted without the permission of Spirit Fires Ltd. All dimensions include a +/-2mm tolerance.

Spirit Fires Ltd, 4 Beaumont Square Durham Way South, Newton Aycliffe County Durham, DL5 6XN

Sales: +44 (0)1325-301020 Office: +44 (0) 1325 327 221 Fax: +(0)1325 327 292 Email: sales@cvo.co.uk Web: www.cvo.co.uk

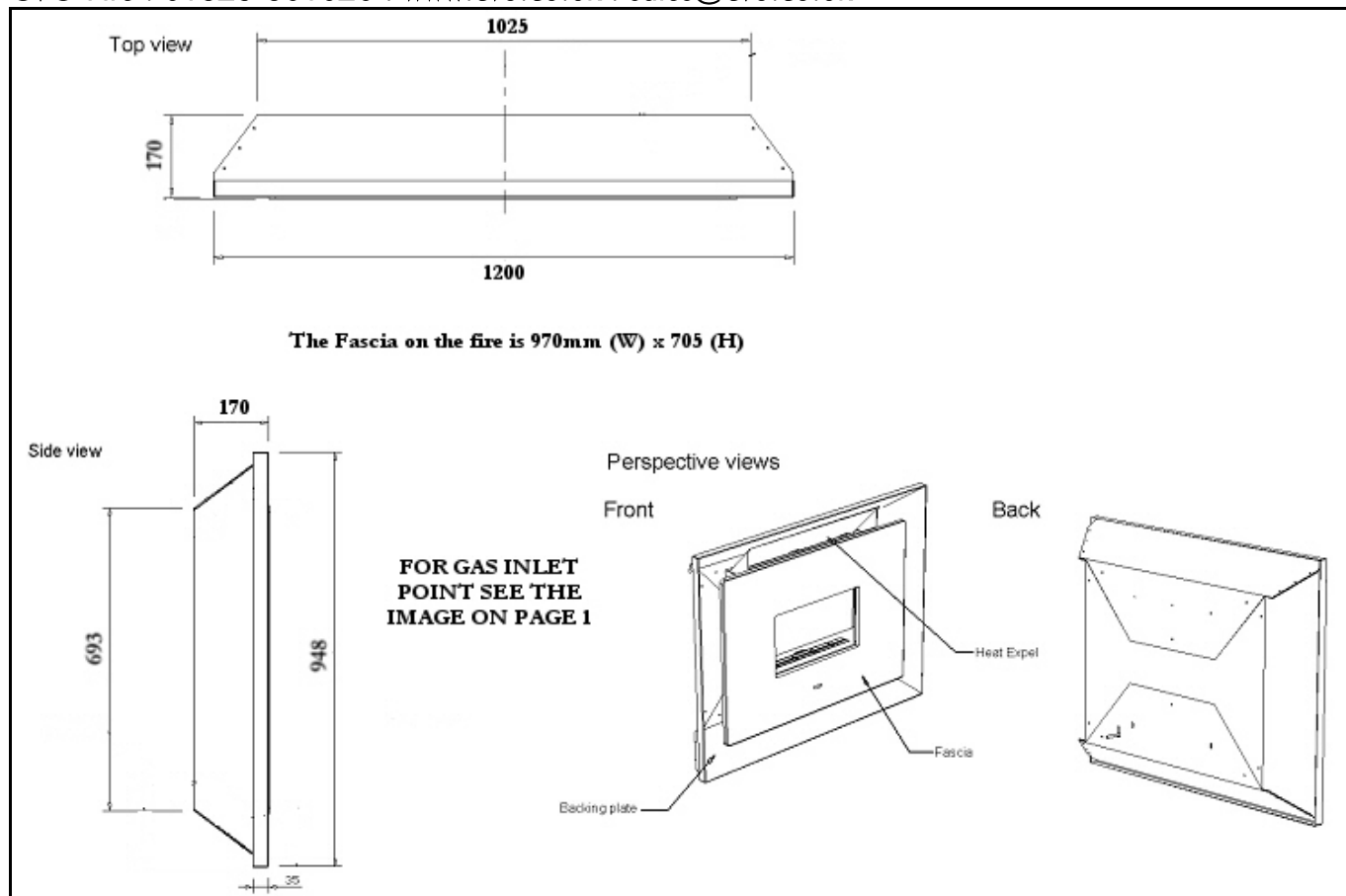
SHOWROOM: CVO Fires can be seen live in our FIREVAULT showrooms based in the North and South of the UK.

Visit www.firevault.co.uk or call 01325-301020 for full contact details, location maps and directions.

Classico & Moderno with Recessed Wall Plate [Standard Size]

Index # 44, Rev-12 / 28-March-2014 / Page 2 of 2

CVO Fire : 01325-301020 : www.cvo.co.uk : sales@cvo.co.uk



WARNING:

The dimensions shown are for guidance only as the recess plate has manufacturing tolerances. No building work should take place until the recess has arrived at site and can be measured for accurate dimensions.

This recess system will only work with a gas fire manufactured by CVO. The gas fire, deflector and recess plate form a safety tested CE system. The recess must be ordered at the same time as the gas fire to ensure the gas fire supplied is the correct version. If in doubt call sales on 01325-301020. This specification is provided as pre-sales literature only. It is not to be used as a replacement for the installation booklet that is provided with the fire and recess at the time of delivery.

DO NOT USE THIS SPECIFICATION SHEET TO BUILD OPENINGS (READ ABOVE)

=====

CVO reserve the right to amend and improve the specification sheets without prior notice. If in doubt about any aspect of this specification please call. The specification is not to be used to install the fireplace. Every fire is supplied with an official install booklet. Spirit Fires Limited own the Spirit, CVO and Firevault Trademarks. Copying and distribution of these specifications is not permitted without the permission of Spirit Fires Ltd. All dimensions include a +/-2mm tolerance.

Spirit Fires Ltd, 4 Beaumont Square Durham Way South, Newton Aycliffe County Durham, DL5 6XN
Sales: +44 (0)1325-301020 Office: +44 (0) 1325 327 221 Fax: +(0)1325 327 292 Email: sales@cvo.co.uk Web: www.cvo.co.uk

SHOWROOM: CVO Fires can be seen live in our FIREVAULT showrooms based in the North and South of the UK.
Visit www.firevault.co.uk or call 01325-301020 for full contact details, location maps and directions.