

CVO1000 Bio Ethanol Burner with Optional Single- & Double-Sided Enclosure

Index # 114, Rev-5 / 30-May-2019

DESCRIPTION

This Bio Ethanol Fire Ribbon Burner uses clean burning bio ethanol fuel to provide up to 6kW of heat. The burner is supplied with a safety tray and is manufactured from high quality brushed stainless steel. The CVO1000 has been designed to produce a large glamorous flame with a tray capacity of 3 litres and will burn for approx. 4 hours. The burn time can be extended by partially closing the lid to reduce the flame size, also saving fuel and reducing the heat output.

CONSTRUCTION

When buying the burner tray only it is supplied with a safety tray that must be used. When buying the enclosure, the fire is supplied with the safety tray built into the enclosure. The dimensions are shown on the technical drawing on Page 2. No building work should take place until the goods are on site, there tolerances in the manufacturing process which are out of our control; we will not accept any claims for variances in the sizes.

BURNER

The burner is made of brushed stainless steel and incorporates special matting to increase the burn time and help stabilize the flame. The burner has a built-in slider that is used to extinguish the flame and regulate the flame. By reducing the flame, the heat is reduced, and the fuel will last longer.



FUEL TYPE

The burner is designed for use with bio ethanol fuel only. Never use any other fuel. You can buy the fuel from our online store at www.easyfire.co.uk

TRAY CAPACITY & RUNNING TIME

The maximum amount of fuel to be used is 3 Litres. The actual capacity is higher however at 3L the burner operates safely. DO NOT OVERFILL. The burner will run for approximately 4 hours on maximum. If the lid is partially closed the heat output and running time can be increased to around 6 hours.

ENCLOSURE

We can supply a standard enclosure for the CVO1000, designed from high quality materials and incorporates the safety tray as standard. There is a single or double sided (see through) version available in Matt Black, Brushed or Polished Steel (see pages 3 & 4 for overall dimensions).

TECHNICAL INFORMATION

When buying the burner tray only, great care must be taken when designing a bespoke fireplace to house the burner. The fireplace cavity must be constructed of a non-combustible material with clearances to combustible materials in line with current regulations. The burner is designed to be used in an enclosure with a closed top, back and sides. If used on an open table or other style of enclosure the performance of the flame may be affected, we will not accept claims for the performance of the burner in a non-standard CVO enclosure. For that reason, we strongly advise buying the enclosure with the burner. There is an additional technical guide showing with notes on how to design your own enclosure, this is available upon request by calling 01325-301020. CVO Fire will not accept any responsible for any damages resulting from the incorrect design, installation or use of this burner unit within a self-designed fireplace. The fire is designed as a secondary heat source. Not suitable for outdoor use.

CVO reserve the right to amend and improve the specification sheets without prior notice. If in doubt about any aspect of this specification, please call. The specification is not to be used to install the fireplace. Every fire is supplied with an official install booklet. Spirit Fires Limited own the Spirit, CVO and Firevault Trademarks. Copying and distribution of these specifications is not permitted without the permission of Spirit Fires Ltd.
All dimensions include a +/-2mm tolerance.

Spirit Fires Ltd, 4 Beaumont Square, Durham Way South, Newton Aycliffe, County Durham, DL5 6XN
Sales: +44 (0)1325-301020 Office: +44 (0) 1325 327 221 Fax: +(0)1325 327 292 Email: sales@cvo.co.uk Web: www.cvo.co.uk

SHOWROOM: CVO Fires can be seen live in our firevault showroom based in the North East, UK.
Visit www.firevault.co.uk or call 01325-301020 for full contact details, location maps and directions.

CVO1000 Bio Ethanol Burner with Optional Single- & Double-Sided Enclosure

Index # 114, Rev-5 / 30-May-2019

USER INFORMATION

Do not overfill the tray or fill the tray when it is hot. The flame quality will be affected by the quality of the fuel and the final fireplace design. On each new use of the tray the burner must be filled to the full mark. Lighting the tray with only a small amount of fuel will result in the burner turning off many times before staying on. Once extinguished the tray should not be refilled or relit until it has fully cooled down. The unit has an adjustable lid to regulate the flame, shut off the fire and to increase burn time. The unit is supplied with handle to close the lid and extinguish the flame.

HEAT

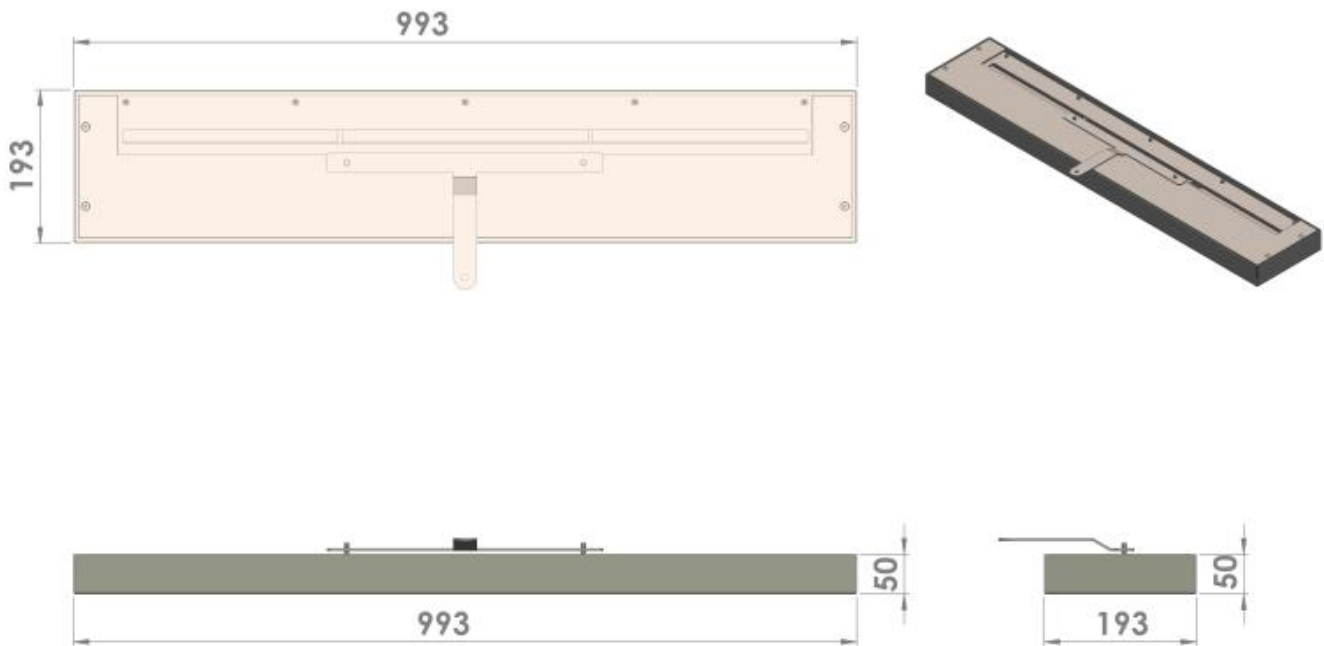
The CVO1000 is a very large burner and generates a considerable amount of heat and this should be taken into account when designing the enclosure and surrounding areas. If using stone, then heat shock may occur causing the stone to crack.

FUEL / FLAME

The burner must only be used with high quality bio ethanol fuel for fireplaces. As this is a bio ethanol fire operated by liquid fuel it cannot be expected to operate like a gas fire. The fuel burns until it is exhausted. When first lit the flame will be blue and small, the flame then gradually improves to a yellow quality. Once the tray starts to run out of fuel the flame will deteriorate until the fuel is all exhausted. It should be considered that the burn period of a bio ethanol fire can be split into three periods – start up, optimum flame, burn down. This is the same for all bio ethanol fireplaces.

VENTILATION

All bio ethanol fireplaces require ventilation regardless of supplier. This is due to the flame using oxygen from the room and moisture being given off by the alcohol when being burned. Ventilation can be provided by a fixed air vent which we can supply or by opening a window.



Overall Dimensions = 993mm W x 193mm D x 50mm H

CVO reserve the right to amend and improve the specification sheets without prior notice. If in doubt about any aspect of this specification, please call. The specification is not to be used to install the fireplace. Every fire is supplied with an official install booklet. Spirit Fires Limited own the Spirit, CVO and Firevault Trademarks. Copying and distribution of these specifications is not permitted without the permission of Spirit Fires Ltd. All dimensions include a +/-2mm tolerance.

Spirit Fires Ltd, 4 Beaumont Square, Durham Way South, Newton Aycliffe, County Durham, DL5 6XN
Sales: +44 (0)1325-301020 Office: +44 (0) 1325 327 221 Fax: +(0)1325 327 292 Email: sales@cvo.co.uk Web: www.cvo.co.uk

SHOWROOM: CVO Fires can be seen live in our firevault showroom based in the North East, UK.
Visit www.firevault.co.uk or call 01325-301020 for full contact details, location maps and directions.

CVO1000 Bio Ethanol Burner with Optional Single- & Double-Sided Enclosure

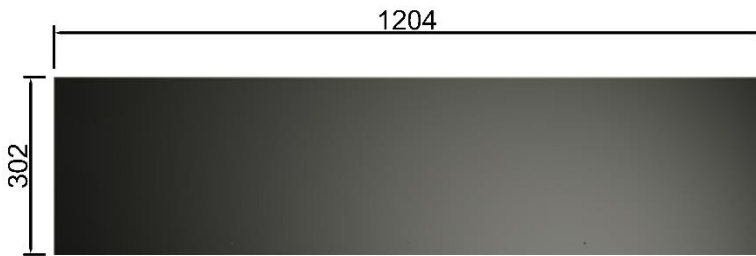
Index # 114, Rev-5 / 30-May-2019

SINGLE SIDED ENCLOSURE

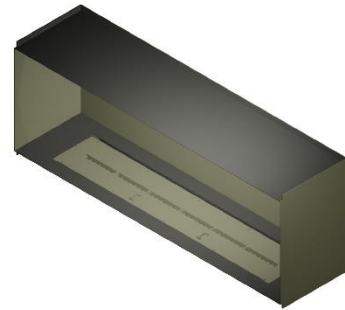
Available in Matt Black Steel, Brushed Steel and Polished Steel.

The standard single sided enclosure is “trimless” allowing a letterbox style installation, however a Satin Black or Brushed Steel trim can be added, the trim simply bonded directly onto the wall around the opening.

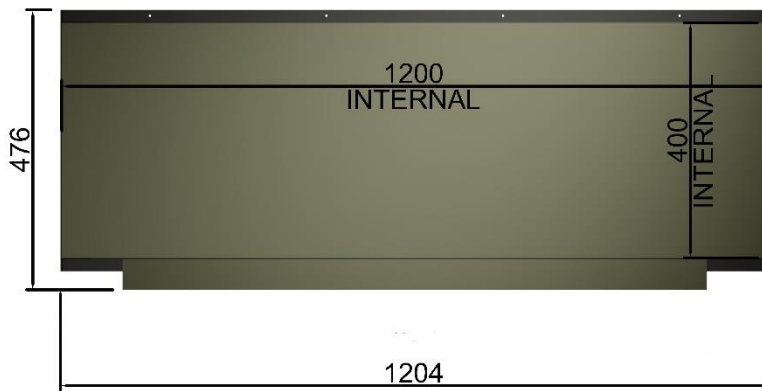
Top view



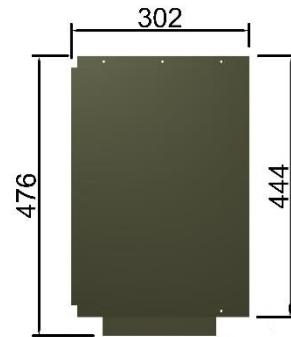
Perspective view



Front view



Side view



When buying the standard single sided enclosure, the safety tray is built into the enclosure.

The dimensions are shown on the technical drawing above.

CVO reserve the right to amend and improve the specification sheets without prior notice. If in doubt about any aspect of this specification, please call. The specification is not to be used to install the fireplace. Every fire is supplied with an official install booklet. Spirit Fires Limited own the Spirit, CVO and Firevault Trademarks. Copying and distribution of these specifications is not permitted without the permission of Spirit Fires Ltd. All dimensions include a +/-2mm tolerance.

Spirit Fires Ltd, 4 Beaumont Square, Durham Way South, Newton Aycliffe, County Durham, DL5 6XN
Sales: +44 (0)1325-301020 Office: +44 (0) 1325 327 221 Fax: +(0)1325 327 292 Email: sales@cvo.co.uk Web: www.cvo.co.uk

SHOWROOM: CVO Fires can be seen live in our firevault showroom based in the North East, UK.
Visit www.firevault.co.uk or call 01325-301020 for full contact details, location maps and directions.

CVO1000 Bio Ethanol Burner with Optional Single- & Double-Sided Enclosure

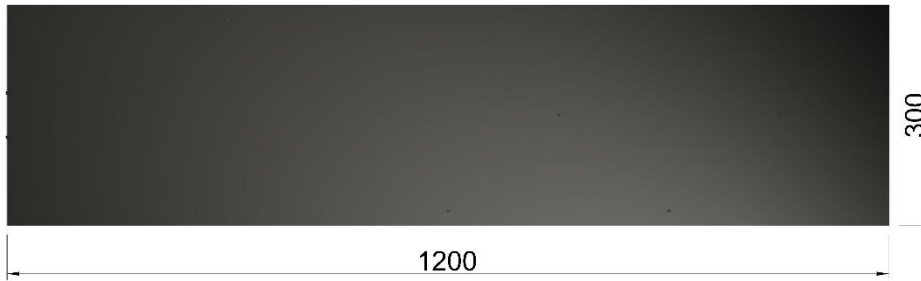
Index # 114, Rev-5 / 30-May-2019

DOUBLE SIDED ENCLOSURE

Available in Matt Black Steel, Brushed Steel and Polished Steel.

The standard double-sided enclosure is “trimless” allowing a letterbox style installation, however a Satin Black or Brushed Steel trim can be added, the trim simply bonded directly onto the wall around the opening.

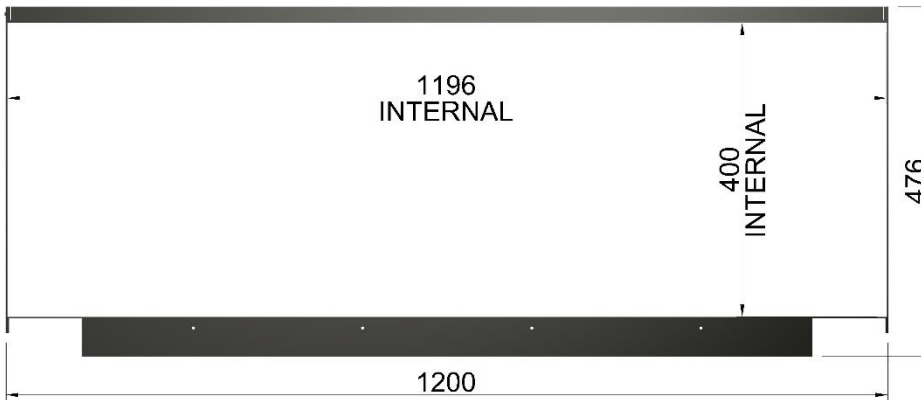
Top view



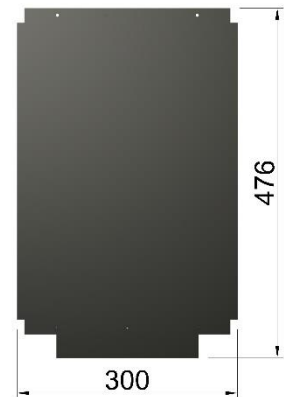
Perspective view



Front view



Side view



When buying the standard double-sided enclosure, the safety tray is built into the enclosure.

The dimensions are shown on the technical drawing above.

CVO reserve the right to amend and improve the specification sheets without prior notice. If in doubt about any aspect of this specification, please call. The specification is not to be used to install the fireplace. Every fire is supplied with an official install booklet. Spirit Fires Limited own the Spirit, CVO and Firevault Trademarks. Copying and distribution of these specifications is not permitted without the permission of Spirit Fires Ltd. All dimensions include a +/-2mm tolerance.

Spirit Fires Ltd, 4 Beaumont Square, Durham Way South, Newton Aycliffe, County Durham, DL5 6XN
Sales: +44 (0)1325-301020 Office: +44 (0) 1325 327 221 Fax: +(0)1325 327 292 Email: sales@cvo.co.uk Web: www.cvo.co.uk

SHOWROOM: CVO Fires can be seen live in our firevault showroom based in the North East, UK.
Visit www.firevault.co.uk or call 01325-301020 for full contact details, location maps and directions.