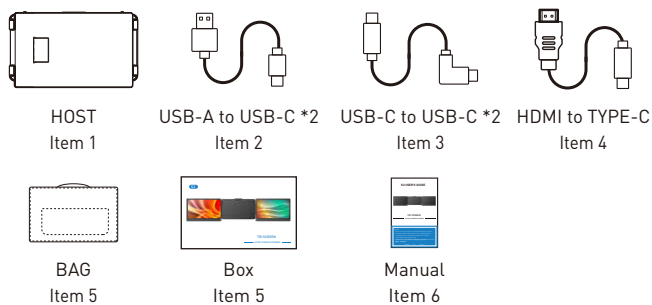
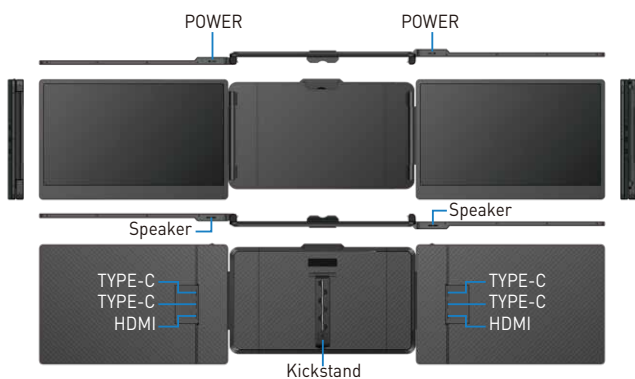


# Multi-functional Touch Screen Monitor

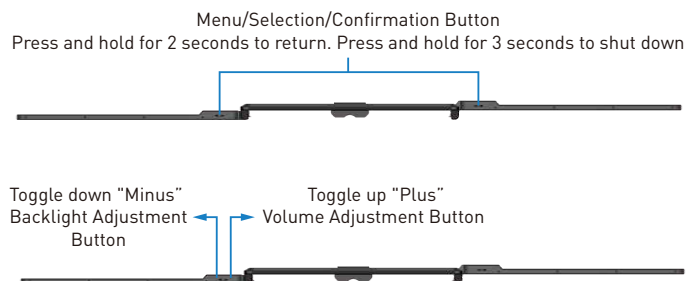
## Packing List



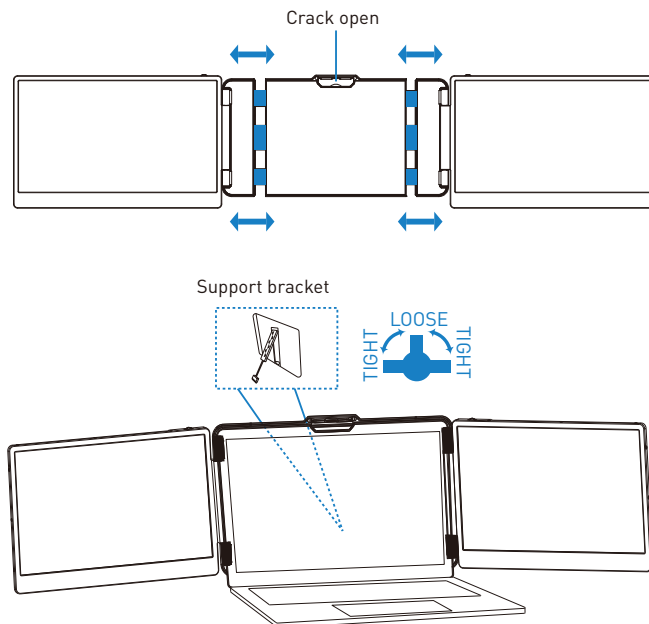
## These Ports You Need to Know



## Key Definition



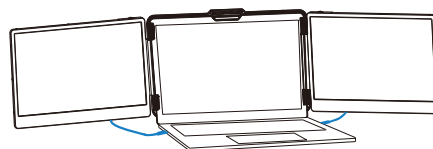
## Landscape and Portrait Modes



## How to Connect

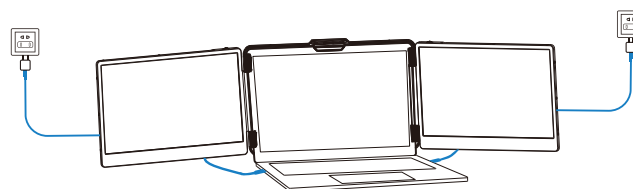
### Connect S2 with Laptop

Connect S2 to your laptop and check that your laptop has a Type-C, Type-A or HDMI port that can 5V/2A power. Connect S2 to your laptop through S2's Type-C and HDMI port, following the options below:

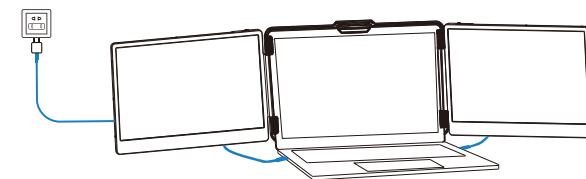


### Connect to S2 through the Type-C interface of the notebook

Option 1: If your laptop has two Type-C ports (full function ports), and the Type-C output port of the laptop can provide more than 5V/2A power supply, directly connect the S2 and the laptop with two Type-C cables.



Option 2: If your laptop has 2 Type-C ports (full function ports), and your laptop Type-C outlet cannot provide more than 5V/2A power supply or the display has no signal/the signal is unstable after connection, then you need to connect an external 5V/2A adapter to power S2. Then connect the S2 to the laptop with two Type-C cables.



To connect the S2 screen to your laptop via the HDMI interface, follow these steps:  
Option 3: If your laptop has both a Type-C and an HDMI port, you can use a Type-C cable to connect the S2 screen to the Type-C port of your laptop, and then use an HDMI TO TYPE-C cable to connect the S2 screen to the HDMI port of your laptop. After that, you can connect a 5V/2A adapter to power the S2 screen.

## Q&A

**Q1: How can I tell if the USB-C port on my computer is full-featured?**

A1: USB-C port coming with one of the following symbols is a full-featured USB-C port. Thunderbolt 3 or thunderbolt 4 port is also full-featured. You can view the port parameters in the manual or on the network.



**Q2: Why does one monitor show "No Signal" ?**

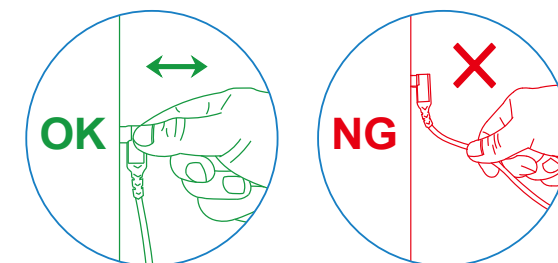
A2: The connection may have failed or the computer port does not support video output. Please contact us for troubleshooting. We'll offer solution as soon as possible!

**Q3: The screen does not light up after connecting?**

A3: It may be that your computer does not have enough power. Please charge the monitor using an external power source that provides 5V/2A power. You can also contact us for further solution.

## Tips for Use

Please refer to the pictures below to insert or unplug the data cable to avoid damage.



For more detailed information please check the manual of the product.