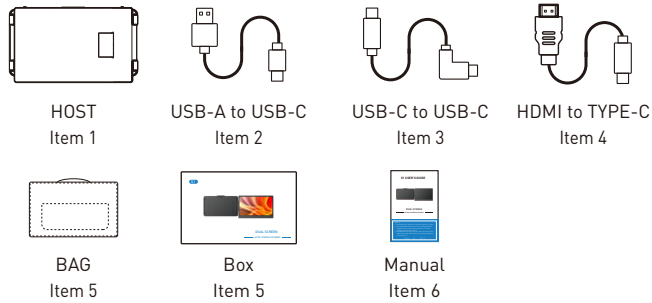
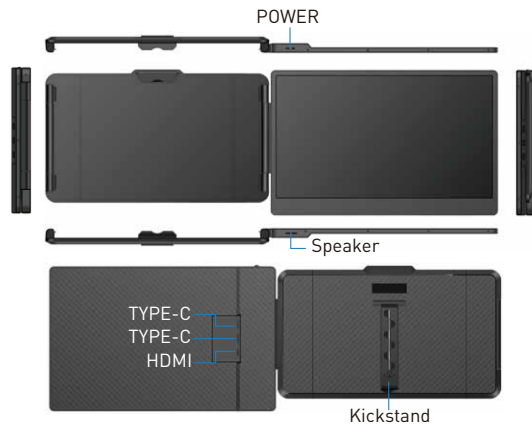


Multi-functional Touch Screen Monitor

Packing List

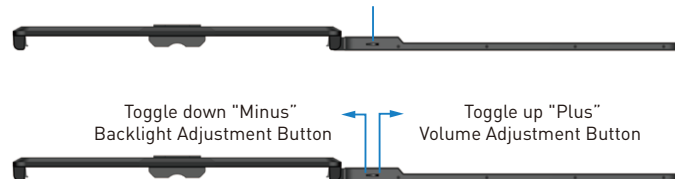


These Ports You Need to Know

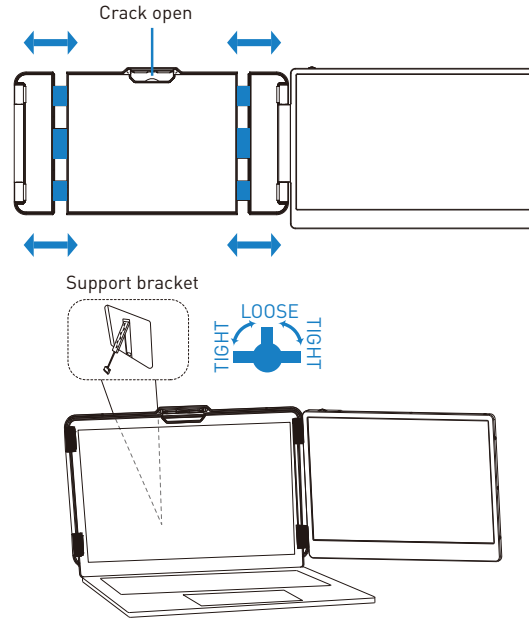


Key Definition

Menu/Selection/Confirmation Button
Press and hold for 2 seconds to return. Press and hold for 3 seconds to shut down



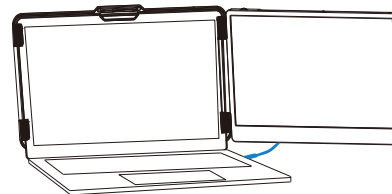
Landscape and Portrait Modes



How to Connect

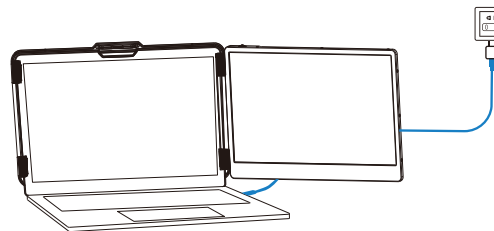
Connect S1 with Laptop

Connect S1 to your laptop and check that your laptop has a Type-C, Type-A or HDMI port that can provide 5V/2A power. Connect S1 to your laptop through S1 Type-C and HDMI port, following the options below:

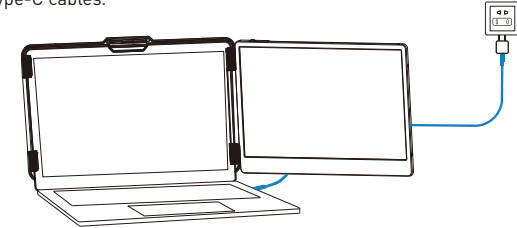


Connect to S1 through the Type-C interface of the notebook

Option 1: If your laptop has Type-C ports (full function ports), and the Type-C output port of the laptop can provide more than 5V/2A power supply, directly connect the S1 and the laptop with one Type-C cables.



Option 2: If your laptop has Type-C ports (full function ports), and your laptop Type-C outlet cannot provide more than 5V/2A power supply or the display has no signal/the signal is unstable after connection, then you need to connect an external 5V/2A adapter to power S1. Then connect the S1 to the laptop with one Type-C cables.



To connect the S1 screen to your laptop via the HDMI interface, follow these steps:
Option 3: If there is only one HDMI port on your laptop, you can use an HDMI TO Type-C cable to connect the S1 screen to the HDMI port of your laptop. Then use a USB-A TO Type-C cable to provide power to the S1 screen.

Q&A

Q1: How can I tell if the USB-C port on my computer is full-featured?

A1: USB-C port coming with one of the following symbols is a full-featured USB-C port. Thunderbolt 3 or thunderbolt 4 port is also full-featured. You can view the port parameters in the manual or on the network.



Q2: Why does one monitor show "No Signal" ?

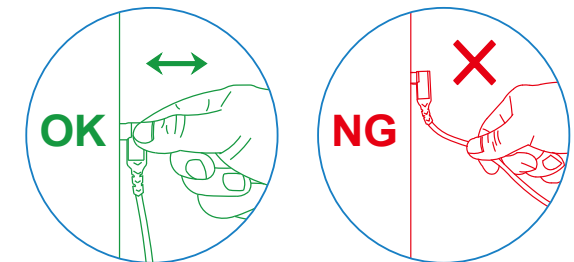
A2: The connection may have failed or the computer port does not support video output. Please contact us for troubleshooting. We'll offer solution as soon as possible!

Q3: The screen does not light up after connecting?

A3: It may be that your computer does not have enough power. Please charge the monitor using an external power source that provides 5V/2A power. You can also contact us for further solution.

Tips for Use

Please refer to the pictures below to insert or unplug the data cable to avoid damage.



For more detailed information please check the manual of the product.