

1:32 Chieftain Twin axle Bunded Fuel Bowser

2x Laser Cut Acrylic Sheets, 2x Plasticard Strips, 4x Resin Wheels, 4x Resin Mudguards, 2x Axles, 2x Conspicuity Tape/Vinyl, 1x Decals

CLEAN ALL RESIN PARTS IN WARM SOAPY WATER

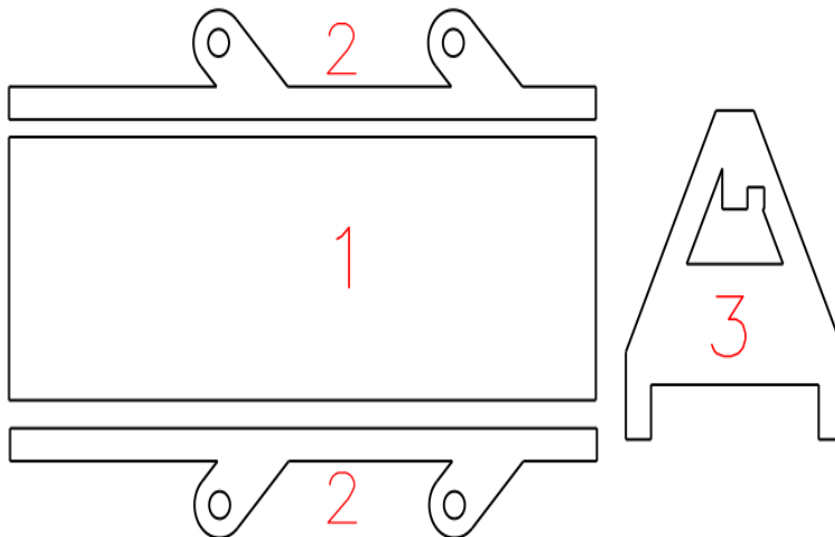
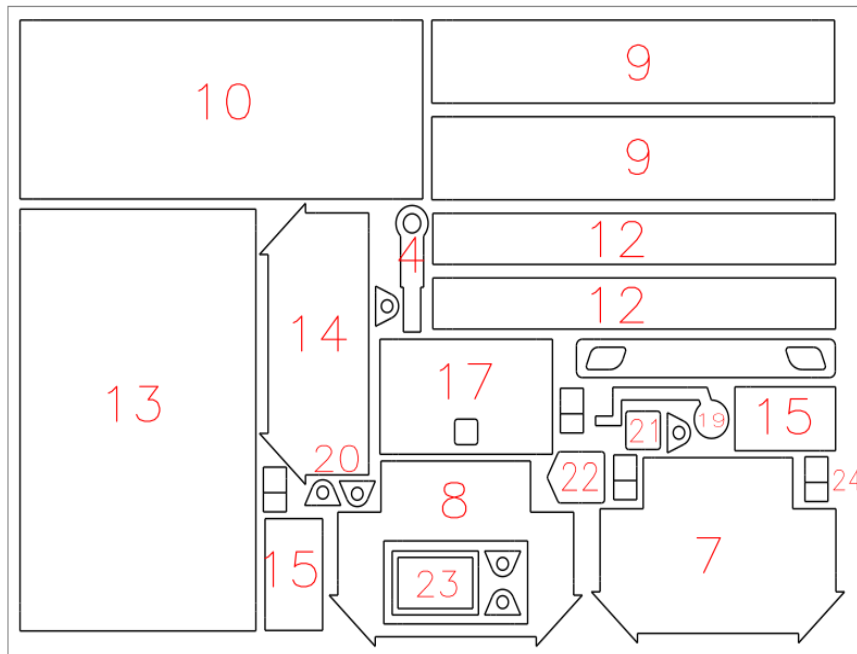
The silicone release agent used in the casting process will react with paint, it must be thoroughly cleaned off before painting.

This is a rough guide to using the kit. Care should be taken at each stage to make sure the model is going together correctly and any alterations that are not in the instructions should be carried out.

Paint: Components can be painted at any time in the build, it is a case of what suits the builder

Glue: Recommended glue is contact adhesive or super glue, we use Blue Lid Gorilla Super Glue.

The parts are numbered in the instructions as follows



BRAEMERMODELSBRAEMERMODELSBRAEMERMODELSBRAEMERMODELSBRAEMERMODELSBRAEMERMODELSBRAEMERMODELSBRAEMERMODELSBRAEMERMODELSBRAEMERMODELS

1:32 Chieftain Twin axle Bunded Fuel Bowser

2x Laser Cut Acrylic Sheets, 2x Plasticard Strips, 4x Resin Wheels, 4x Resin Mudguards, 2x Axles, 2x Conspicuity Tape/Vinyl, 1x Decals

CLEAN ALL RESIN PARTS IN WARM SOAPY WATER

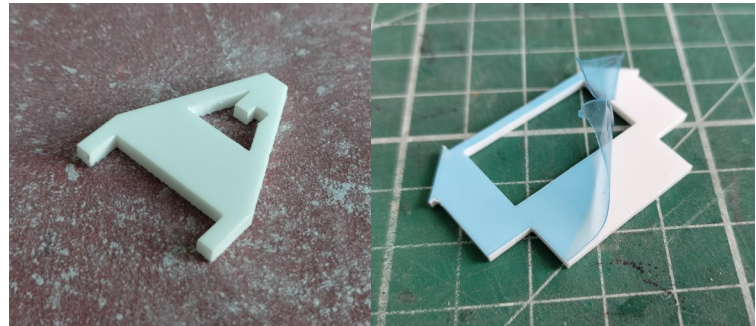
The silicone release agent used in the casting process will react with paint, it must be thoroughly cleaned off before painting.

This is a rough guide to using the kit. Care should be taken at each stage to make sure the model is going together correctly and any alterations that are not in the instructions should be carried out.

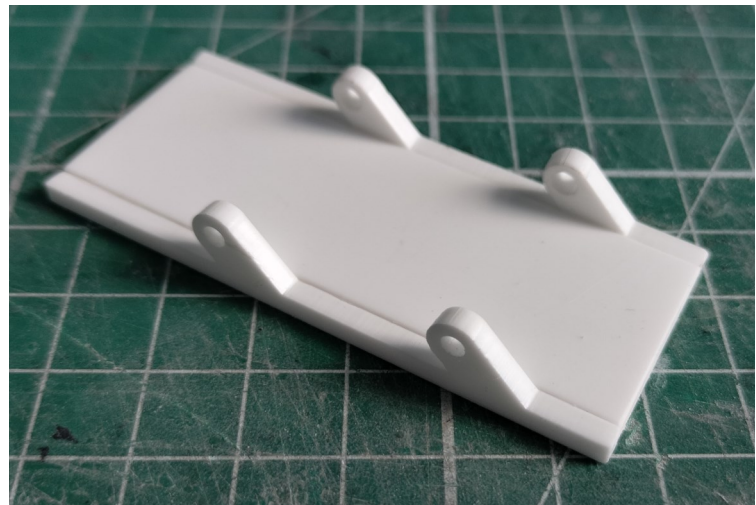
Paint: Components can be painted at any time in the build, it is a case of what suits the builder

Glue: Recommended glue is contact adhesive or super glue, we use Blue Lid Gorilla Super Glue.

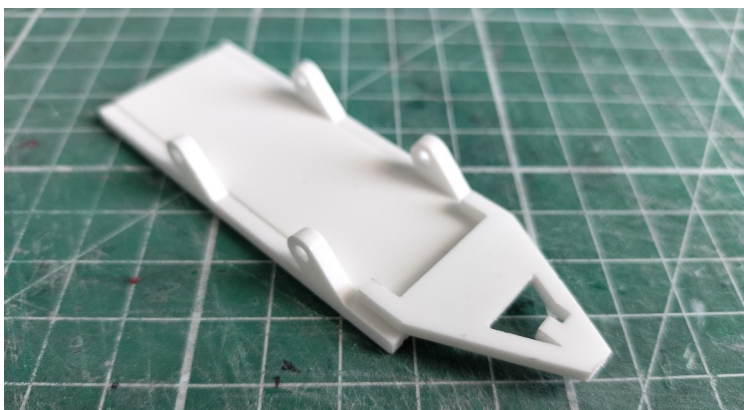
1 Prep the parts. Remove the blue plastic backing and separate parts from the sprues by gently cutting the remaining plastic holding them in place, sand both sides and the edges of all parts with 220 grit or similar sand paper to improve adhesion.



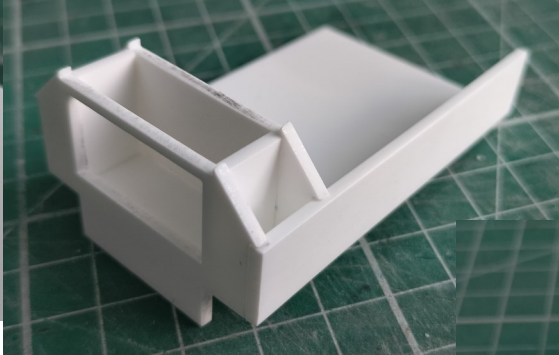
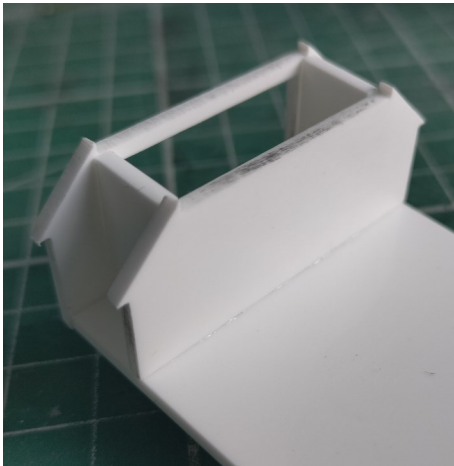
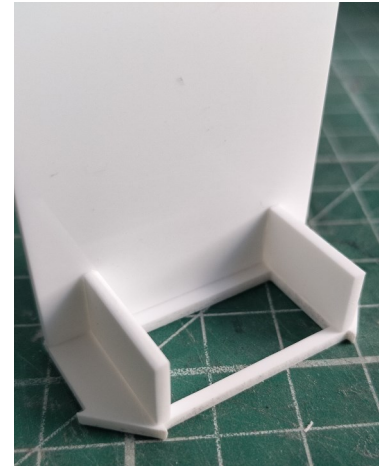
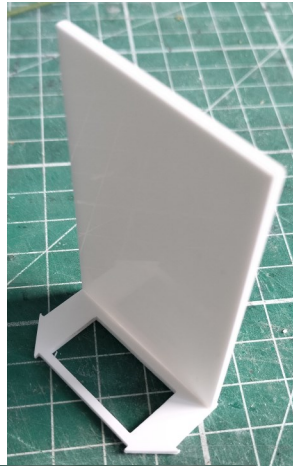
2 Assemble the chassis. Glue the two side rails (2) to the chassis block (1) as illustrated. Each sides suspension blocks should point the same direction. Glue the A-frame (3) to the front (suspension block slope to front). The frame sits underneath the chassis until it starts to angle inwards.



Flip the chassis over and glue the tow eye (4) in place aligning with the tab on the A-frame. Then glue the landing leg (19) in place. If the model is going on a vehicle then glue it in the up position as illustrated.

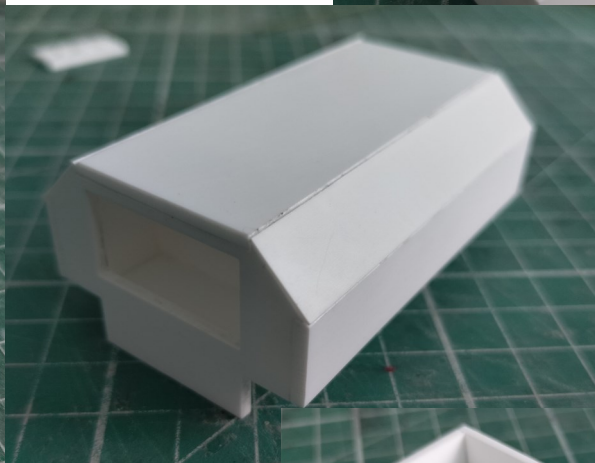
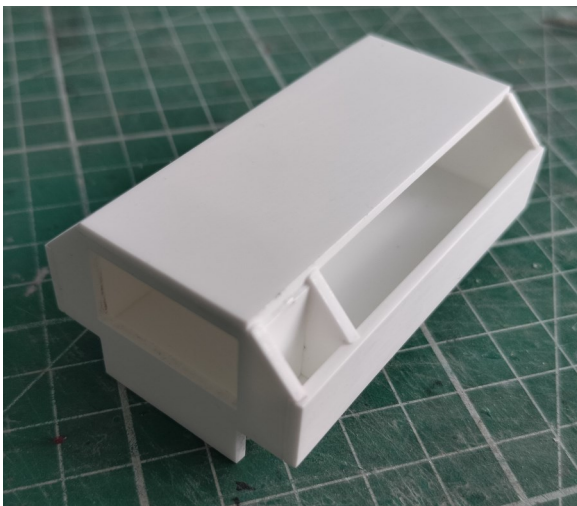


3 Build the tank. Glue the flat face of the rear panel (8) to the edge of the base sheet (13). Glue the two 15 to the sides of the hole as illustrated ensuring everything is true and square. Glue the 14 to the back of these rectangles keeping inline with the base plate.

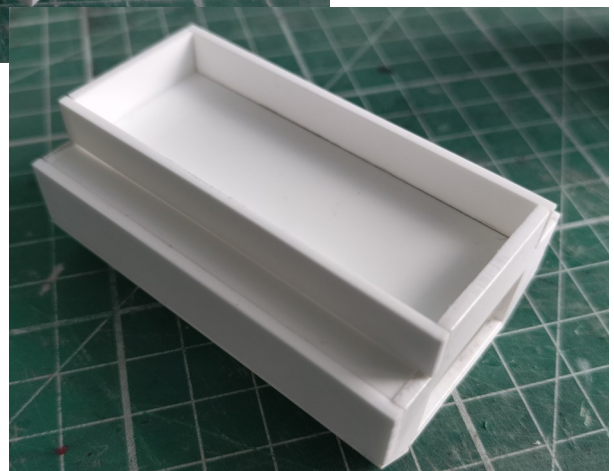


Add one 9 to the side as pictured, it will slot in place with the tabs on both plates. Add the front plate (7) and finish with another side (9).

Cap the top with 10 and then add the two thin plasticcard strips on the angles, trim any excess if necessary.

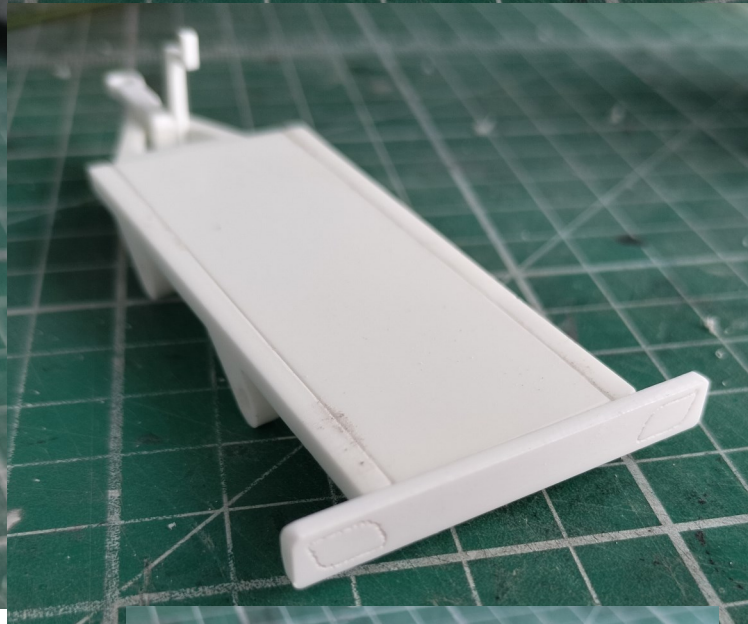
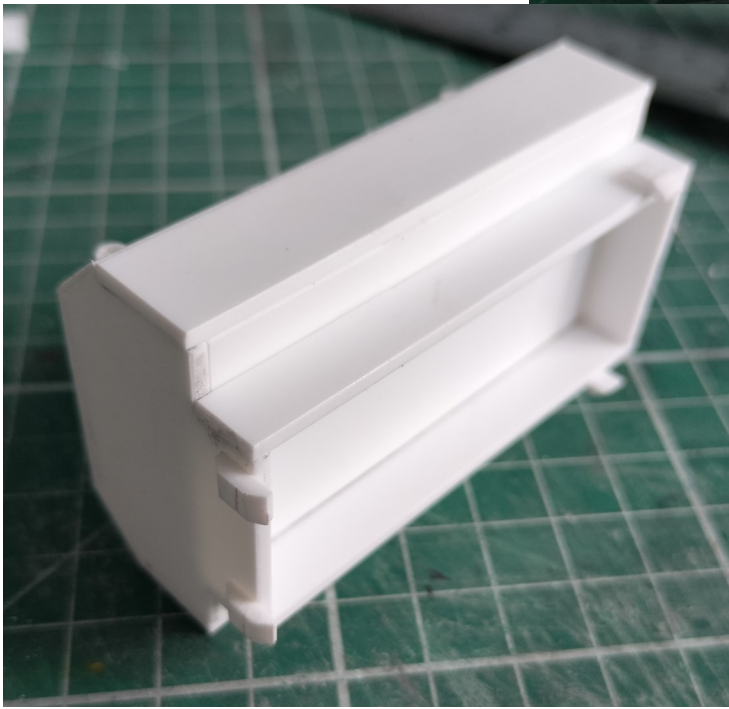
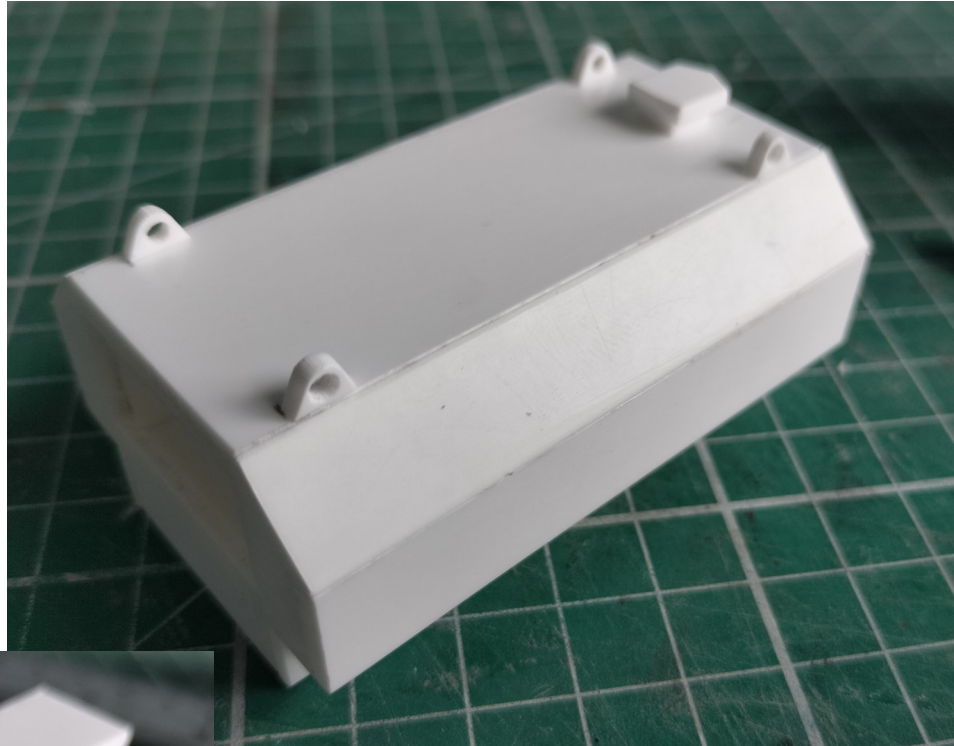


Finally glue the two bottom strips (12) to the base of (13) as pictured to complete the tank.

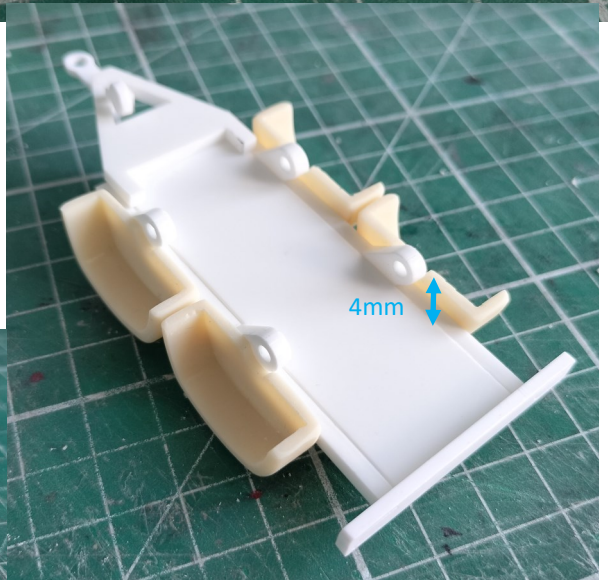
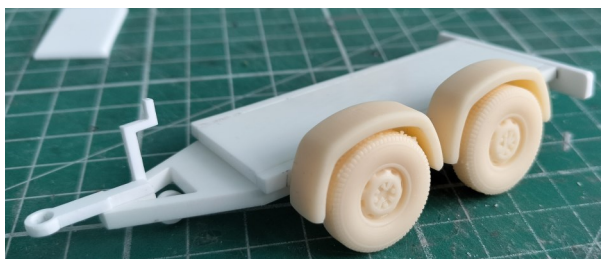


4 Add the details. Add a lifting eye (20) in each corner, inset 5mm from the edge. Build the fill hatch by gluing 22 and 21 together then gluing to the roof at the front and central. You may wish to glue the door (17) on now or leave separate until painted.

Add the mounting brackets (24) two to the front and two on the sides at the back. You may wish to sand these to a chamfer to enhance the look of the model.



5 Complete the chassis. Glue the light board to the back of the chassis. Add the mudguards to the side. Ensure they are inline with the axle holes and that the bottom of the mudguard is 4mm lower than the bottom of the chassis. You may wish to put the wheels on their axle and put under the chassis to check the mudguards are correct.



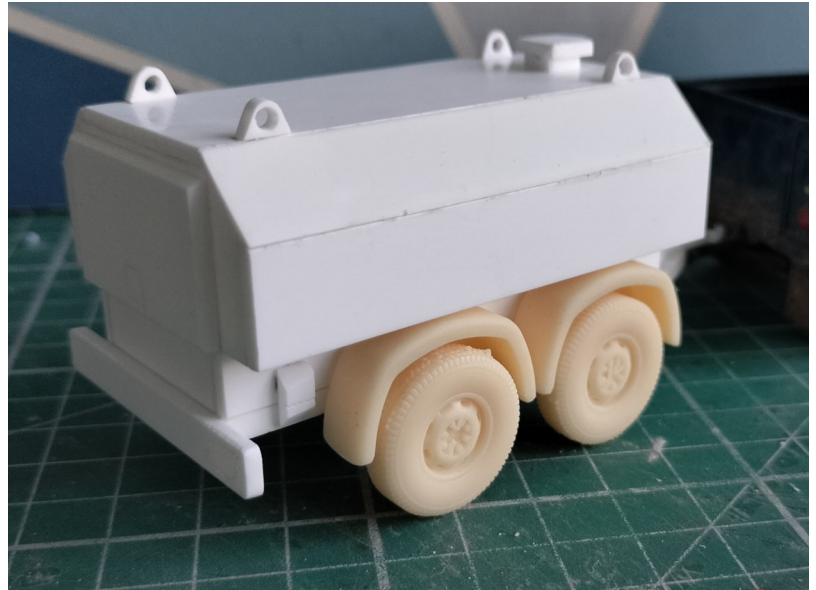
BRAEMER MODELS

GREAT BRITISH KITS

6 Paint. Check the tank fits on the chassis, make any alterations if necessary.

The parts are now ready to paint. We recommend applying a coat of Plastic Primer first (we use Halfords grey plastic primer). We have then painted the chassis, door, solar panel and wheels with Aluminium effect spray paint. The body is painted in Ford Royal Blue, again from Halfords. Allow the paint to dry fully before final assembly.

The tyres are brush painted with matt black modelling paint.



7 Detail. Glue the parts together, take care if using super glue as excess can fog the paint.

Add details like the solar panel to the side. Cut thin lengths of the self adhesive vinyl and stick in place to replicate the reflective tape. Cut the decals out from the sheet and apply.



You've finished the build! Sit back and enjoy what you've created!