

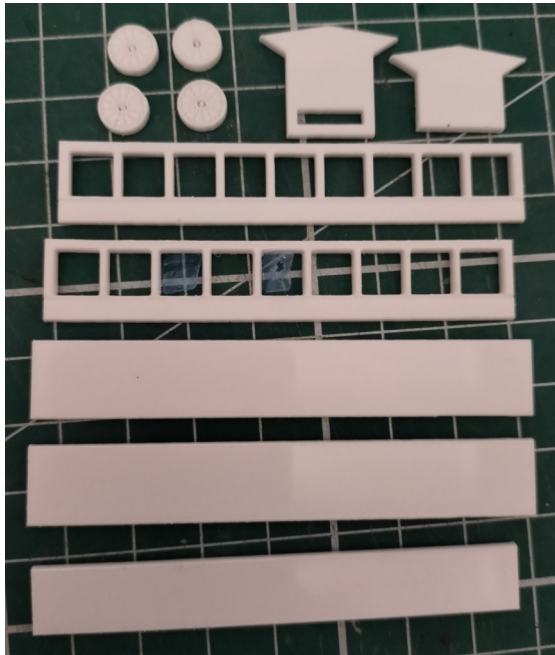
1:32 Sheep/Lamb Feed Creep x2 OFF

1x Laser Cut Plastic Sprue,

**This is a rough guide to using the kit.** Care should be taken at each stage to make sure the model is going together correctly and any alterations that are not in the instructions should be carried out.

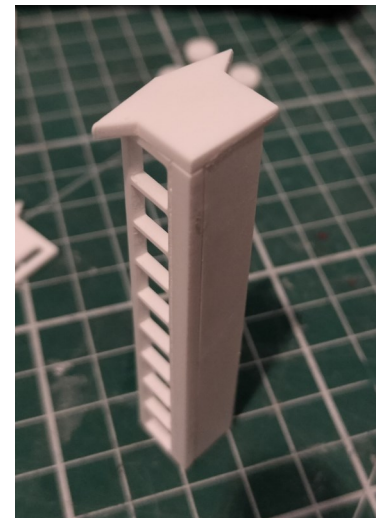
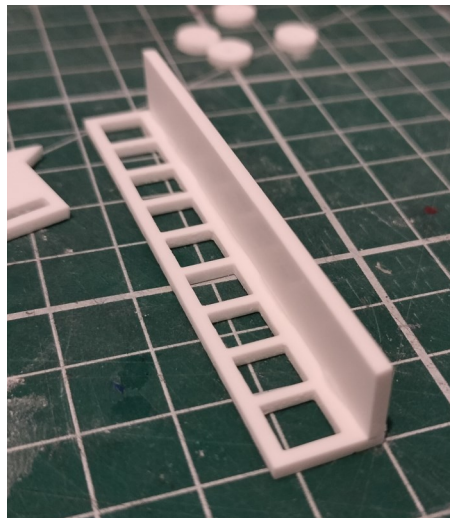
**Paint:** Components can be painted at any time in the build, it is a case of what suits the builder, these parts were painted with Halfords Aluminium Effect spray paint after a coat of grey plastic primer.

**Glue:** Recommended glue is super glue or contact adhesive such as Gorilla Blue Super Glue.

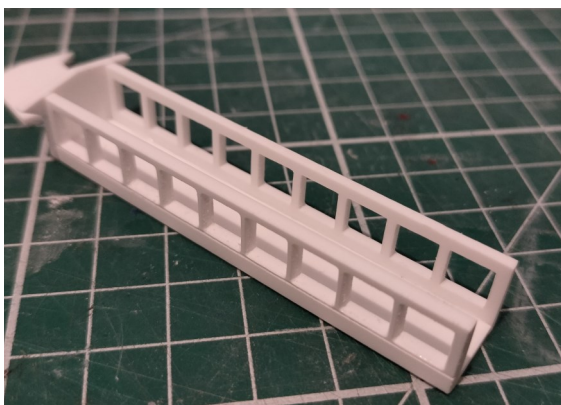


**1.** Remove the plastic film from the back and separate the parts from the sprue by gently cutting the small lengths not cut with the laser that hold the parts on the sprue. Sand each part with 220 grit or similar sand paper to improve adhesion between parts and for better paint adhesion.

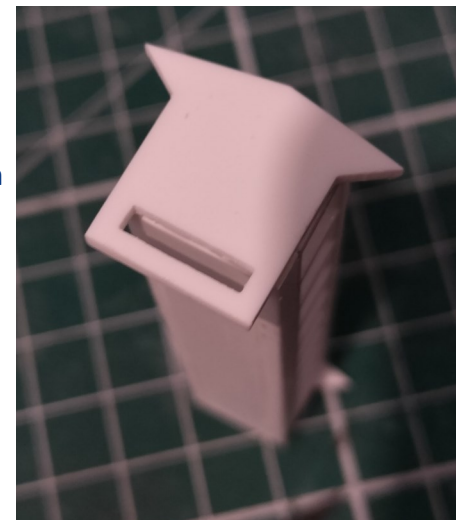
**2.** Glue one side (No.2) to the floor (No.3) ensuring the engraved side faces out and that the floor edge glues to the flat side of the side. Then glue the short end (No.4) in place as illustrated.



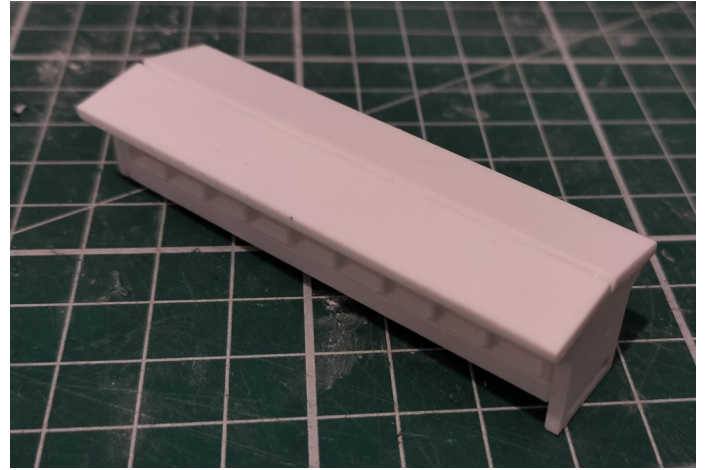
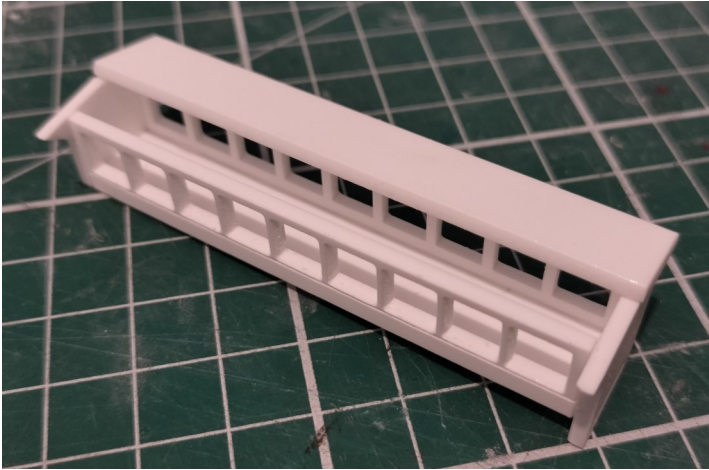
**3.** Glue the second side in place mirroring the other side.



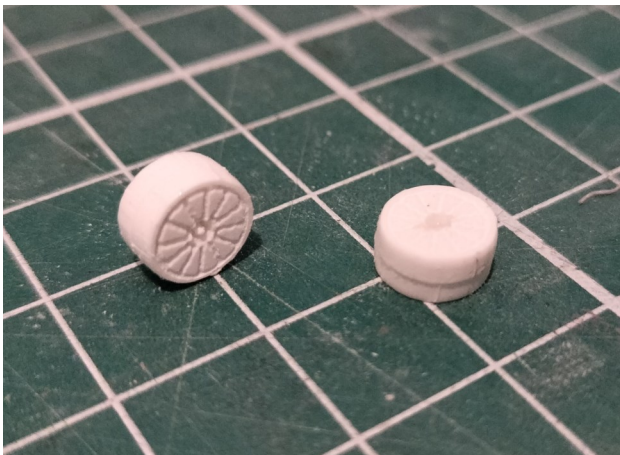
**4.** The long end (No.5) can now be glued in place. It should align with the opposite end, to do this align the floor with the top of the slotted hole. This will keep the roof pitches in place.



BRAEMERE BASICS BRAEMERE BASICS BRAEMERE BASICS BRAEMERE BASICS BRAEMERE BASICS BRAEMERE BASICS BRAEMERE BASICS BRAEMERE BASICS BRAEMERE BASICS BRAEMERE BASICS

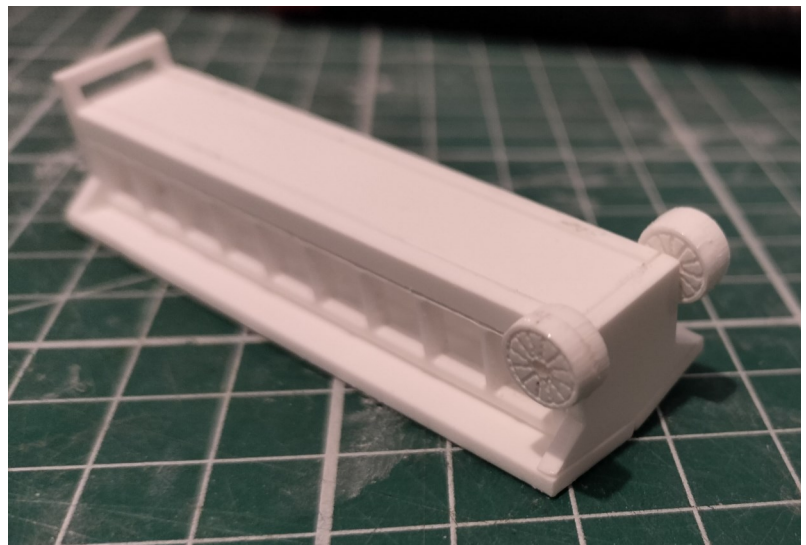


5. The roof can now be glued on (No.1) glues in line with the peak of the roof. The second part then glues opposite butting up to the first part. You may wish to paint the interior before gluing the roof on to get complete coverage.



6. Glue two wheels (No.6) back to back as shown.

7. The wheels are then glued to the corner of each side on the short end of the feeder as illustrated.



8. Repeat the above to make the second feeder and then they can be painted. To paint they were first sprayed with Halfords Grey Plastic Primer before a top coat of aluminium effect spray paint. Wheels are picked out with a brush in matt black and blue. Any silver model paint is suitable to paint with.

Sit back and enjoy the model you have made!

