

Bodenaufbau

Wärmeschutz

$U = 0,13 \text{ W}/(\text{m}^2\text{K})$

GEG 2020 Bestand*: $U < 0,24 \text{ W}/(\text{m}^2\text{K})$



Feuchtigkeit

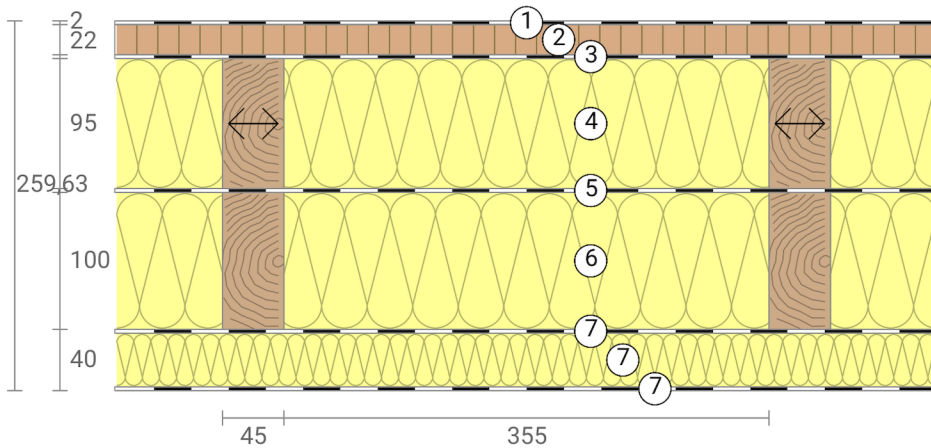
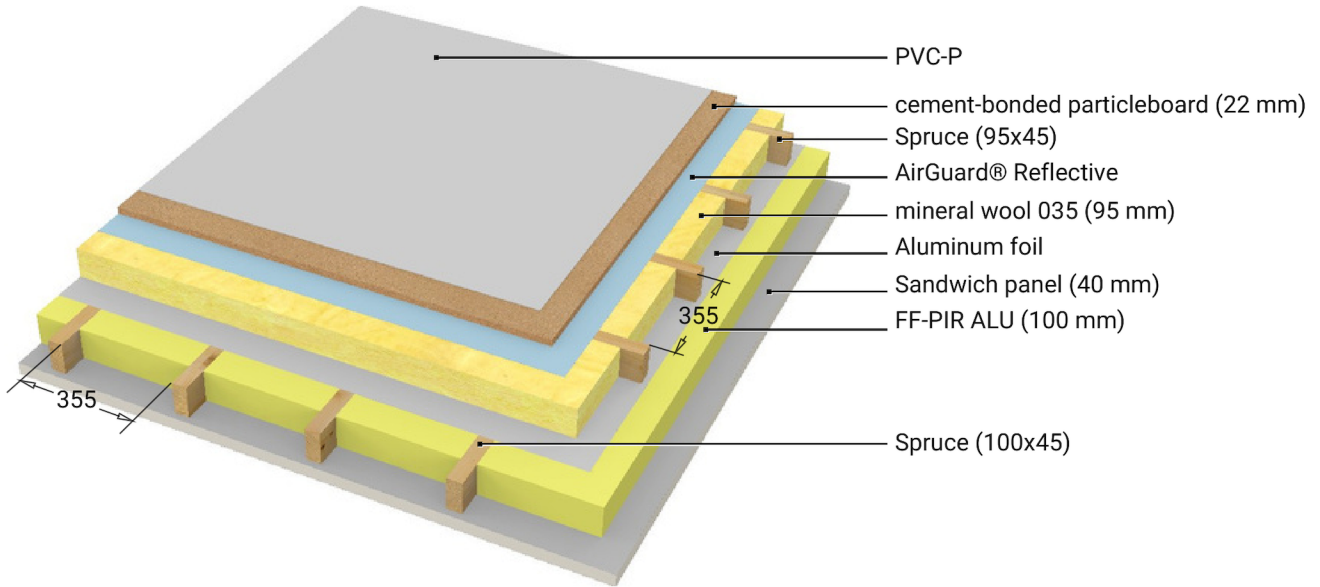
kein Kondensat

Hitzeschutz

Temperaturamplitudendämpfung:

33phase shift: 9,6 h

Thermal capacity inside: 48 kJ/m²K



- ① PVC-P
- ② cement-bonded particleboard (22 mm)
- ③ AirGuard® Reflective
- ④ mineral wool 035 (95 mm)
- ⑤ aluminum foil
- ⑥ FF-PIR ALU (100 mm)
- ⑦ Sandwich panel (40 mm)

Inside air : 20,0°C / 50%
 Outside air: -20,0°C / 80%
 Surface temperature: 18,7°C / -19,8°C

sd-value: 26304,7 m

Thickness: 26,0 cm
 Weight: 51 kg/m²
 Heat capacity: 61 kJ/m²K

- GEG 2020 Bestand
- BEG Einzelmaßn.
- GEG 2020 Neubau
- DIN 4108

Dachaufbau

Wärmeschutz

U = 0,13 W/(m²K)

GEG 2020 Bestand*: U<0,24 W/(m²K)



Feuchtigkeit

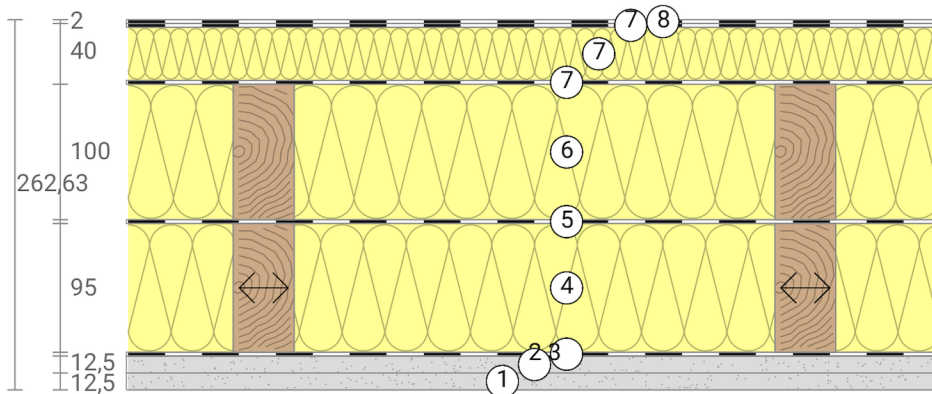
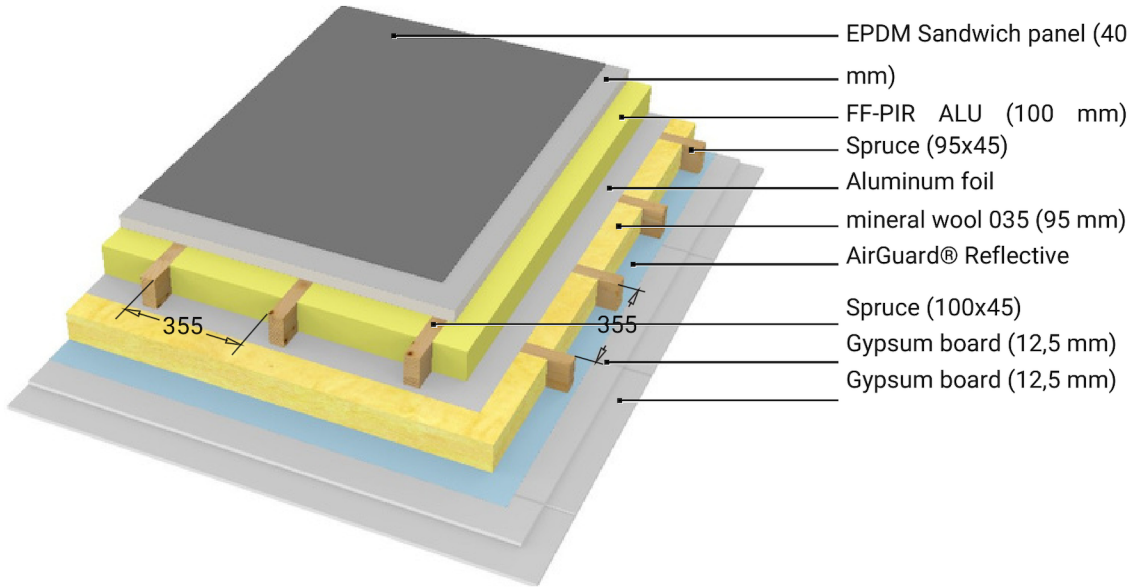
kein Kondensat

Hitzeschutz

Temperaturamplitudendämpfung

14phase shift: 9,2 h

Thermal capacity inside: 23 kJ/m²K



- 1 Gypsum board (12,5 mm)
- 2 Gypsum board (12,5 mm)
- 3 AirGuard® Reflective
- 4 mineral wool 035 (95 mm)
- 5 Aluminum foil
- 6 FF-PIR ALU (100 mm)
- 7 Sandwich panel (40 mm)
- 8 EPDM

Inside air : 20,0°C / 50%
 Outside air: -20,0°C / 80%
 Surface temperature: 18,7°C / -19,8°C

sd-value: 25461,6 m

Thickness: 26,3 cm
 Weight: 42 kg/m²
 Heat capacity: 37 kJ/m²K

- GEG 2020 Bestand
- BEG Einzelmaßn.
- GEG 2020 Neubau
- DIN 4108

Wandaufbau

Wärmeschutz

U = 0,16 W/(m²K)

GEG 2020 Bestand*: U < 0,24 W/(m²K)



Feuchtigkeit

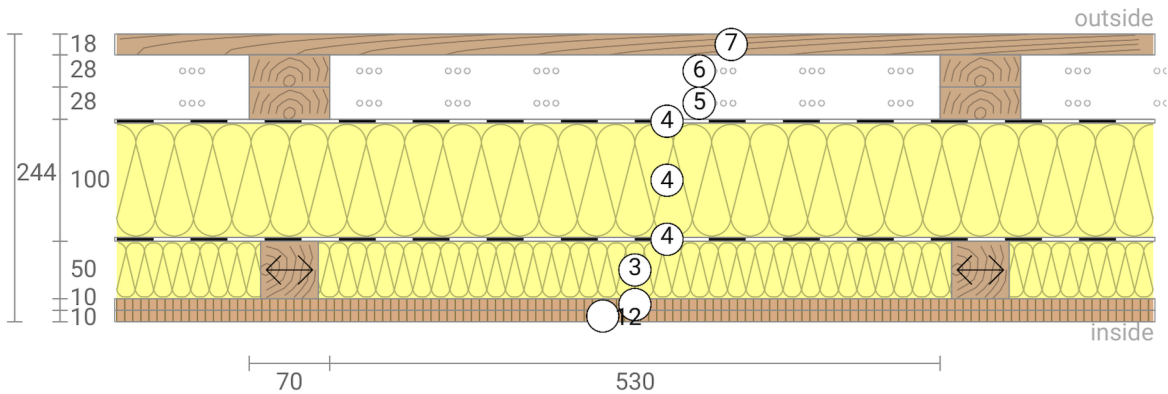
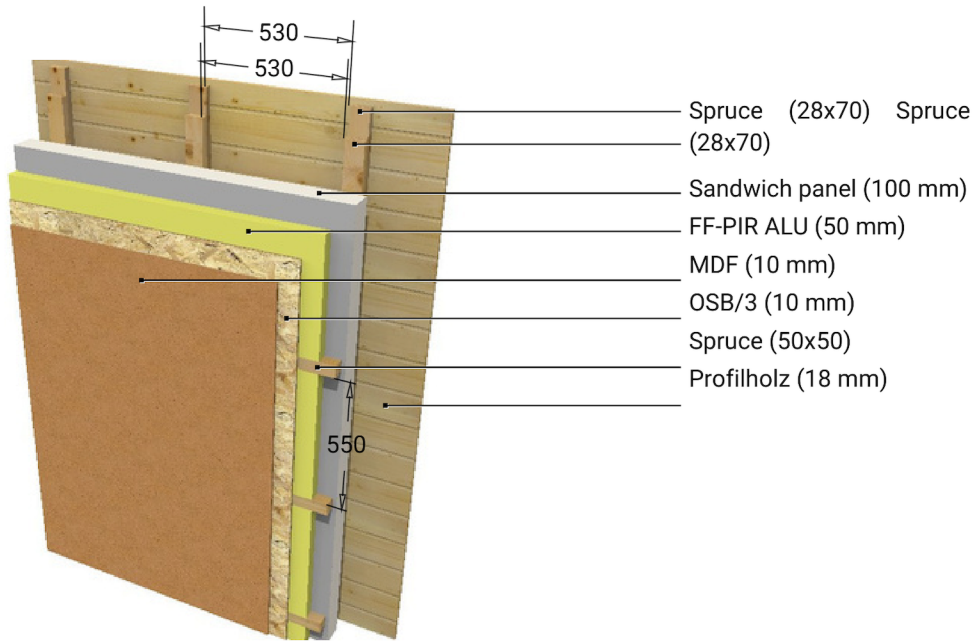
kein Kondensat

Hitzeschutz

Temperaturamplitudendämpfung

11 phase shift: 7,9 h

Thermal capacity inside: 22 kJ/m²K



- ① MDF (10 mm)
- ② OSB/3 (10 mm)
- ③ FF-PIR ALU (50 mm)
- ④ Sandwich panel (100 mm)
- ⑤ Rear ventilated level (28 mm)
- ⑥ Rear ventilated level (28 mm)
- ⑦ Profilholz (18 mm)

Inside air : 20,0°C / 50%
 Outside air: -20,0°C / 80%
 Surface temperature: 18,5°C / -19,8°C

sd-value: 51005,6 m

Thickness: 24,4 cm
 Weight: 35 kg/m²
 Heat capacity: 28 kJ/m²K

- GEG 2020 Bestand
- BEG Einzelmaßn.
- GEG 2020 Neubau
- DIN 4108