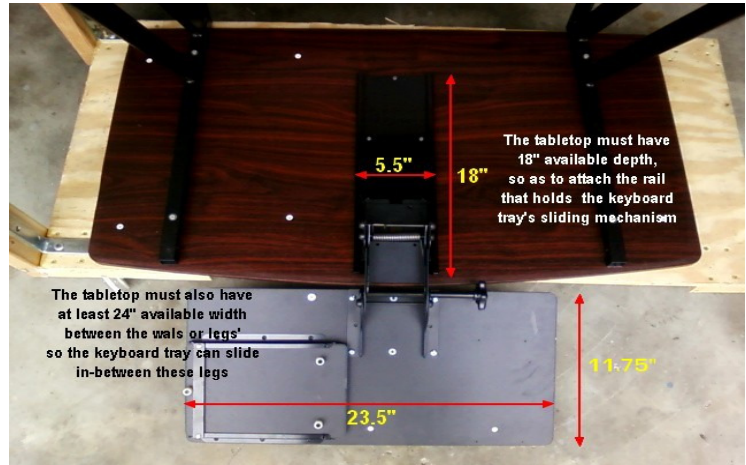


Oceanpointe Distributors Corp.

CUZZI D-KB_DK Keyboard Tray

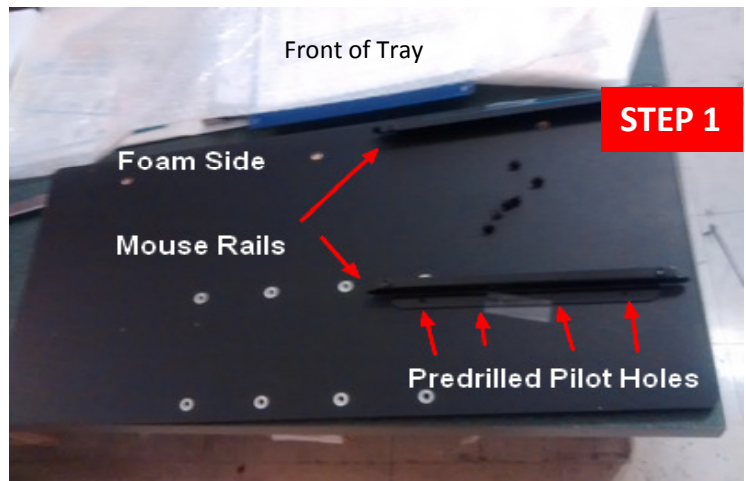
The picture on the right shows the bottom of a tabletop and how the keyboard tray attaches to the rail that allows it to slide.

Please use the factory drawing together with the descriptions below.



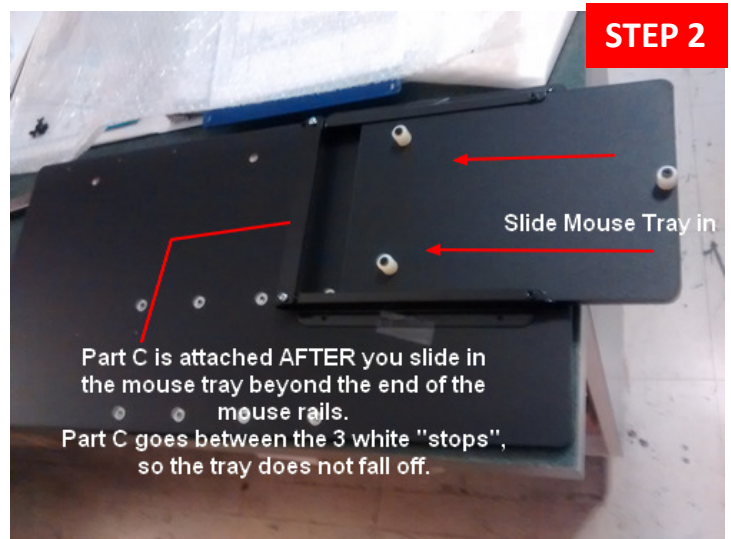
Step 1:

Attach the 2 mouse rails (Part A) to the bottom of the keyboard tray with the black screws “B”, into the tiny pre-drilled pilot holes. The photo shows where to attach these rails for right-handed users. If you are left handed, attach to the opposite side. Notice how the edge bends towards the inside in order to hold the mouse tray that you will slip on in the next step.



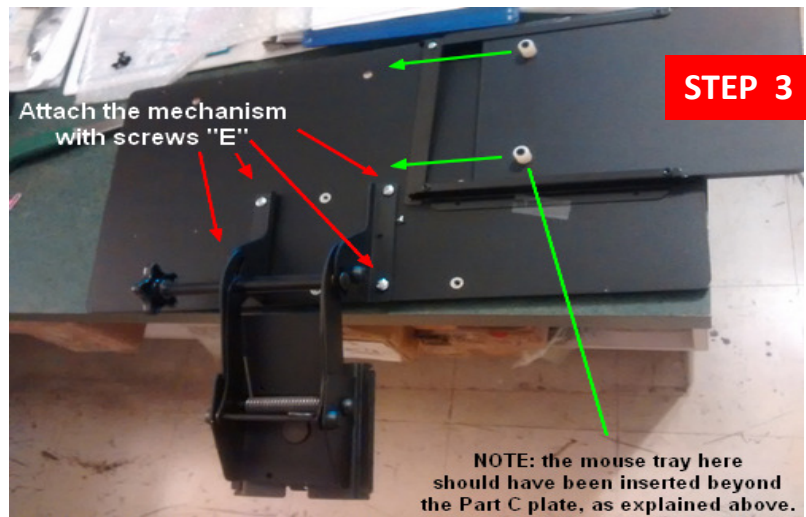
Step 2:

Slide the mouse tray into & between the rails beyond the end of the rails. Once inserted, attach the tiny black plate (Part C) to the 2 threaded holes on the inner end of the rails. This part must be between the 3 white “stops”, to prevent the mouse tray from coming off.



Step 3:

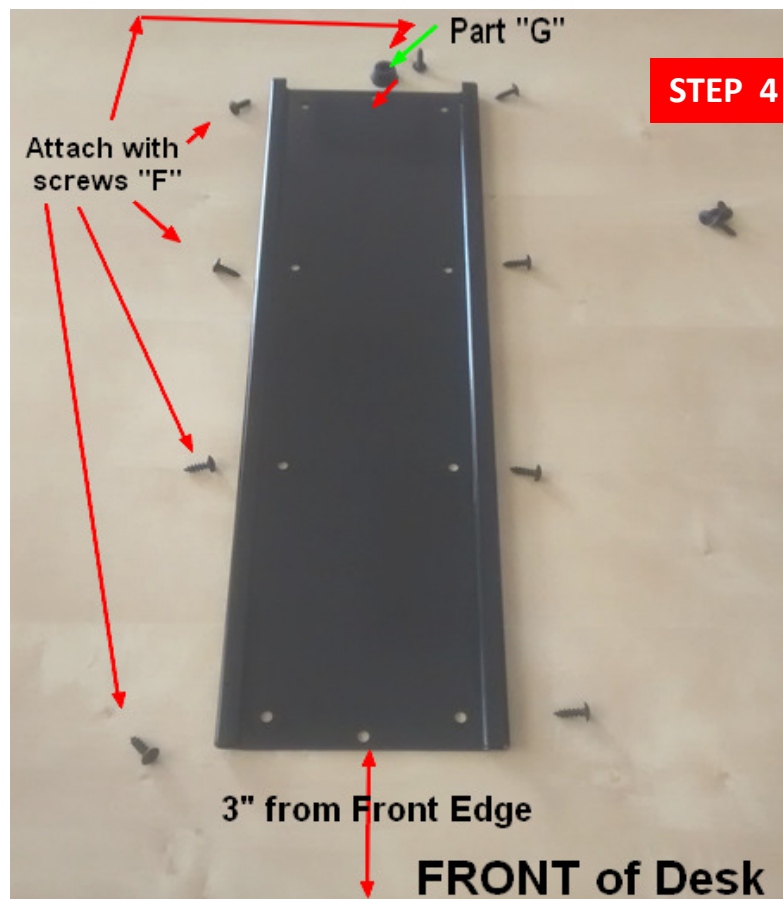
Attach the mechanism to the bottom of the keyboard tray with screws "E".



Step 4:

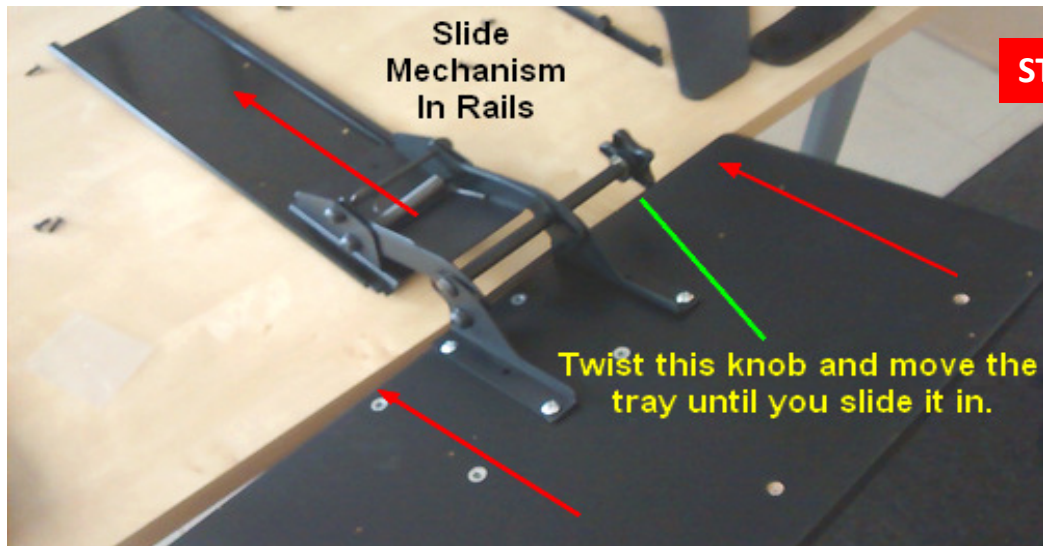
Now you must attach the rail that will hold the keyboard mechanism to the bottom of your table by using the black wood - screws "F". If you want the keyboard tray totally flush with the tabletop when stowed away, the front edge of this rail should at least 3" from the front edge of the table.

In order to create a "stop" so the keyboard tray does not fall of from the rear, you must attach the black plastic "stop" Part "G", also with screw "F".



Step 5:

Now, as shown below, you just slide the keyboard tray mechanism into the rail. In order to do this, you will have to release (un-tighten) the mechanism using the knob, so the keyboard tray does not hit the tabletop while you slide it in.



Step 6:

Once you have the tray in the rail, in order to prevent it from sliding off the front when pulling it out, you must attach the black plastic "stop": Part "H", also with screws "F".

