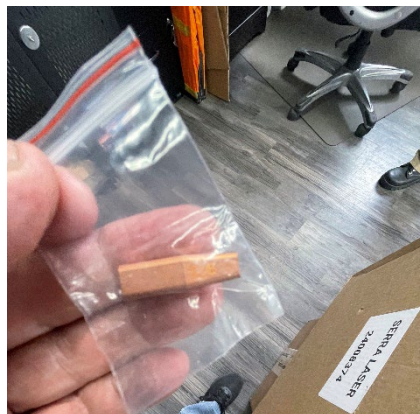
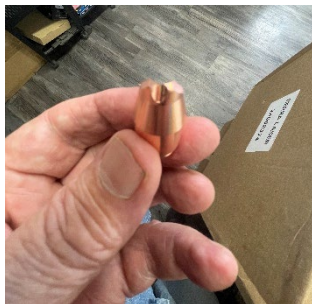


Black Liners – The double wire feeder comes set up for the black liners. There are two sets – one for steel liners and one for teflon liners. They use the cast combiner and can be used up to .060 wire. There are two different sized tips - .045 and .060 that go on the end of the combiner. The nozzles for this combiner have a square groove on the nozzles and there are two sized for .045 and .060 wire.



White Liners – the white liners use the IPG double combiner. This will work up to .045 wire. The pictures below show how it is hooked up into the Double Wire Feeder. You need to take out the hook up for the black liners. These liners are compatible with existing IPG wire feeders. It comes with a single nozzle with twin grooves on the nozzle.

