

mondüo®



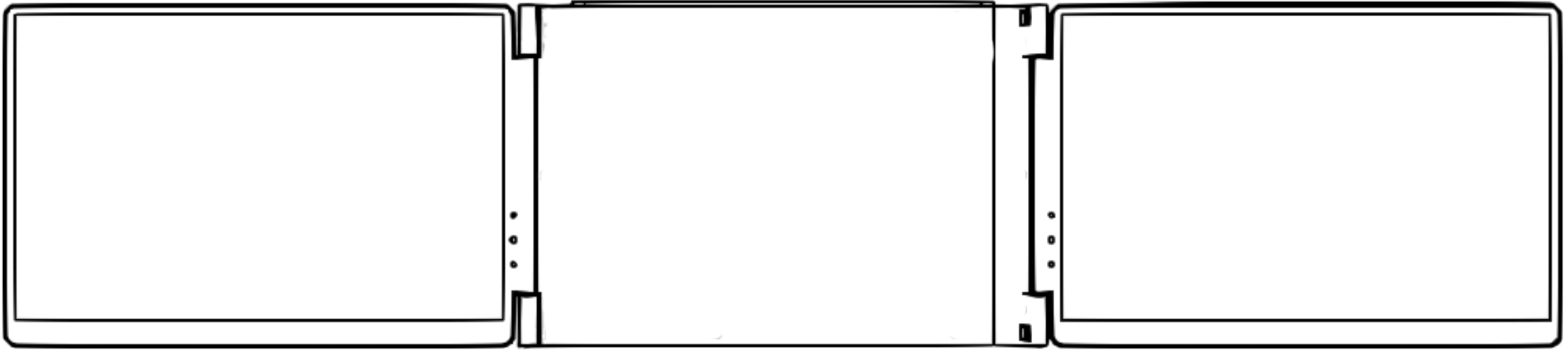
PRO DUO 16" DISPLAY
USER MANUAL

TABLE OF CONTENTS

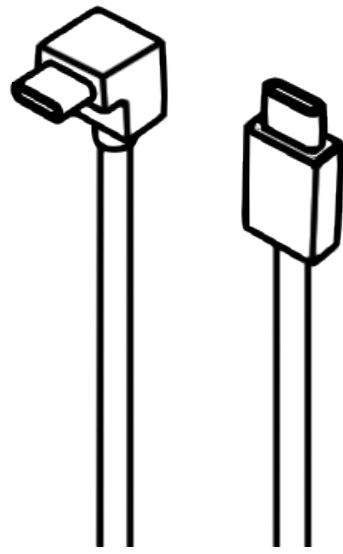
3		Parts Overview
4		Ports, Inputs and Buttons
5		Step by Step Guide
7		On-Screen Display Menu
11		Display Configuration (Mac)
19		Display Configuration (Win)
20		Tech Specs
22		Legal

PARTS OVERVIEW

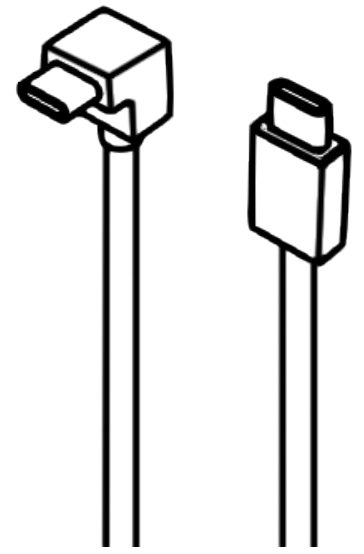
Monduo 16-Inch Pro Duo Display



1x USB-C to USB-C
[min 15W] Power Cable



1x USB-C to USB-C
88cm 90 Degree Cables

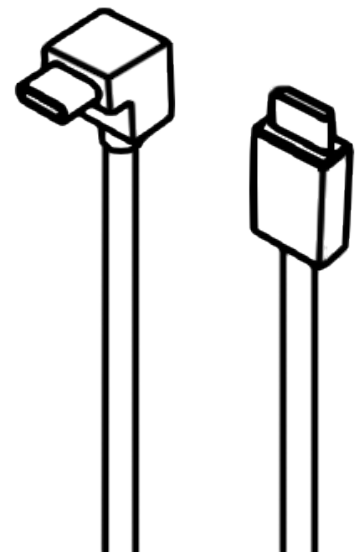


1x USB-C to USB-C
30cm 90 Degree Cables

1x USB-C 90-Degree
Pass-Through
Charging Adapter

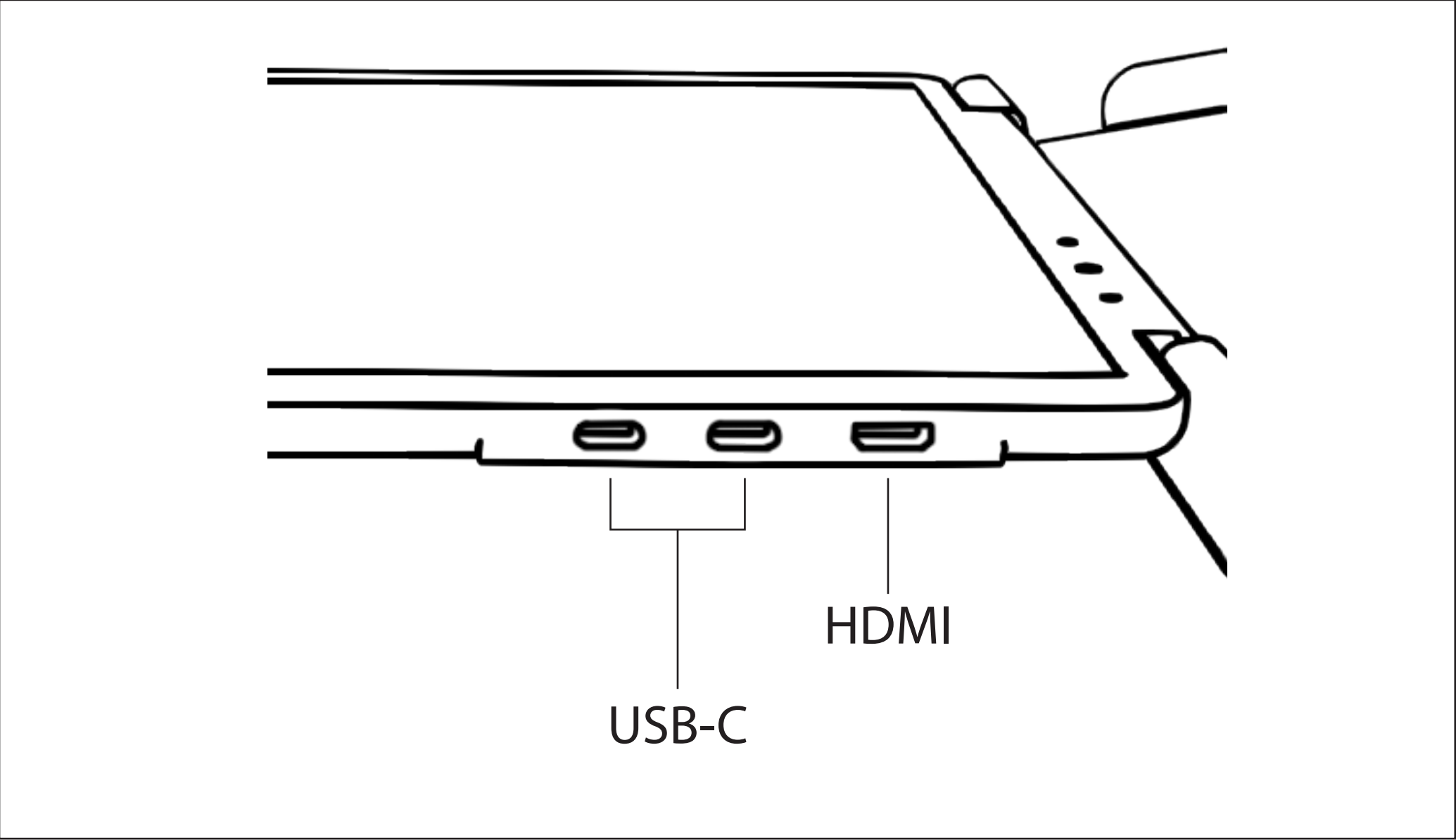


1x Mini-HDMI to HDMI
88cm 90 Degree Cable

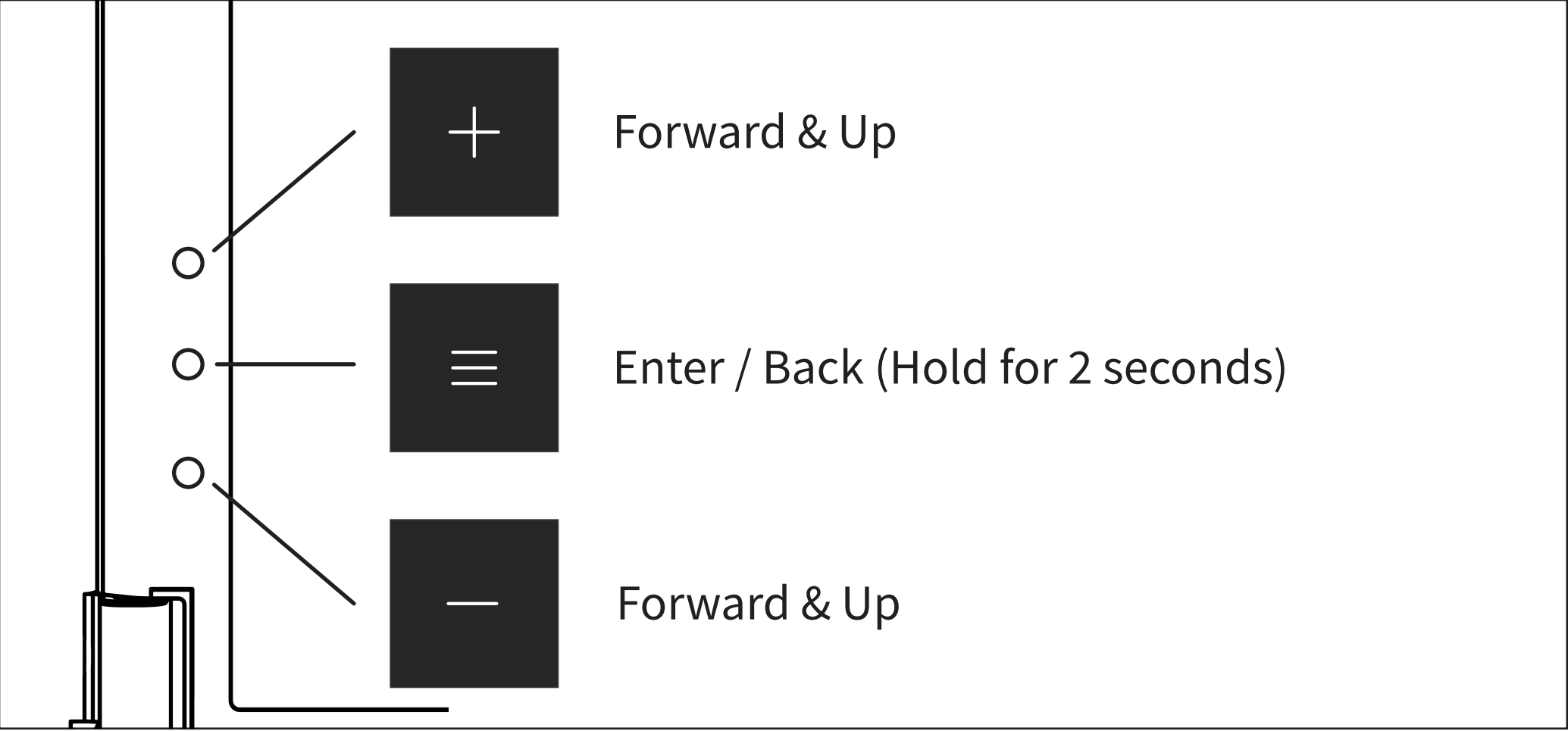


PORTS

The Monduo Displays supports 2 x USB-C Inputs, and 1x HDMI input per display. (USB-C Input supports up to 100w pass-through charging)

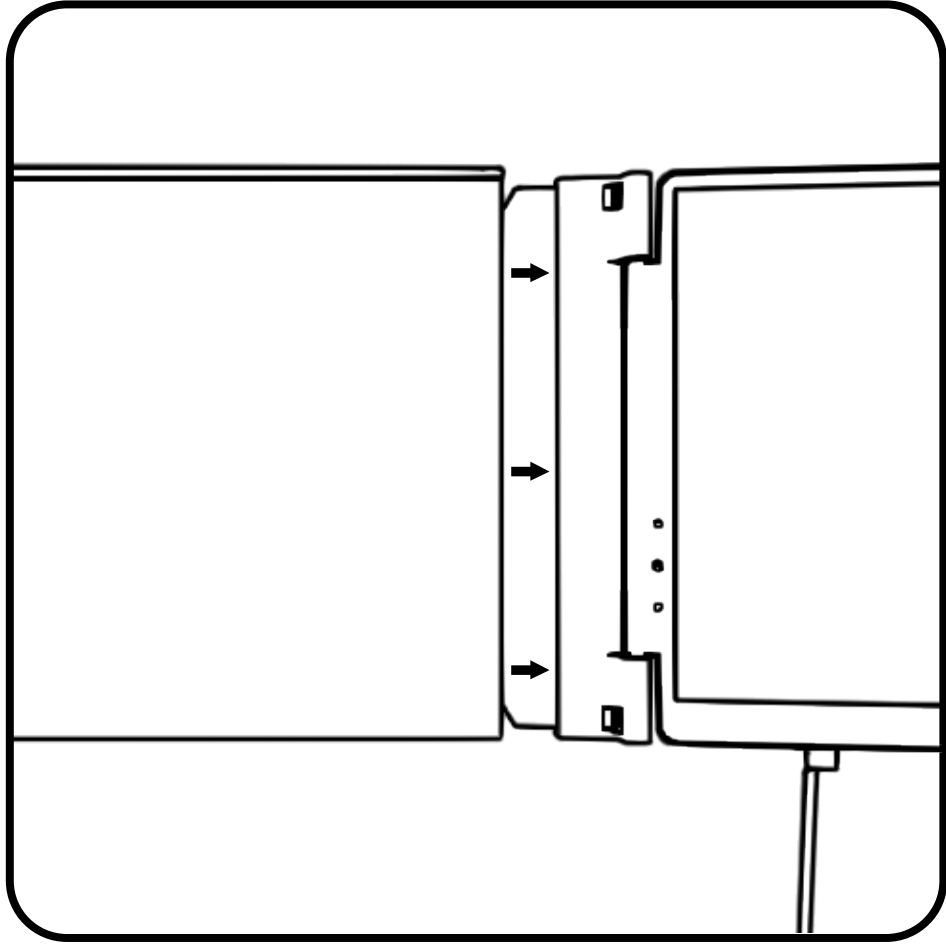


INPUT BUTTONS

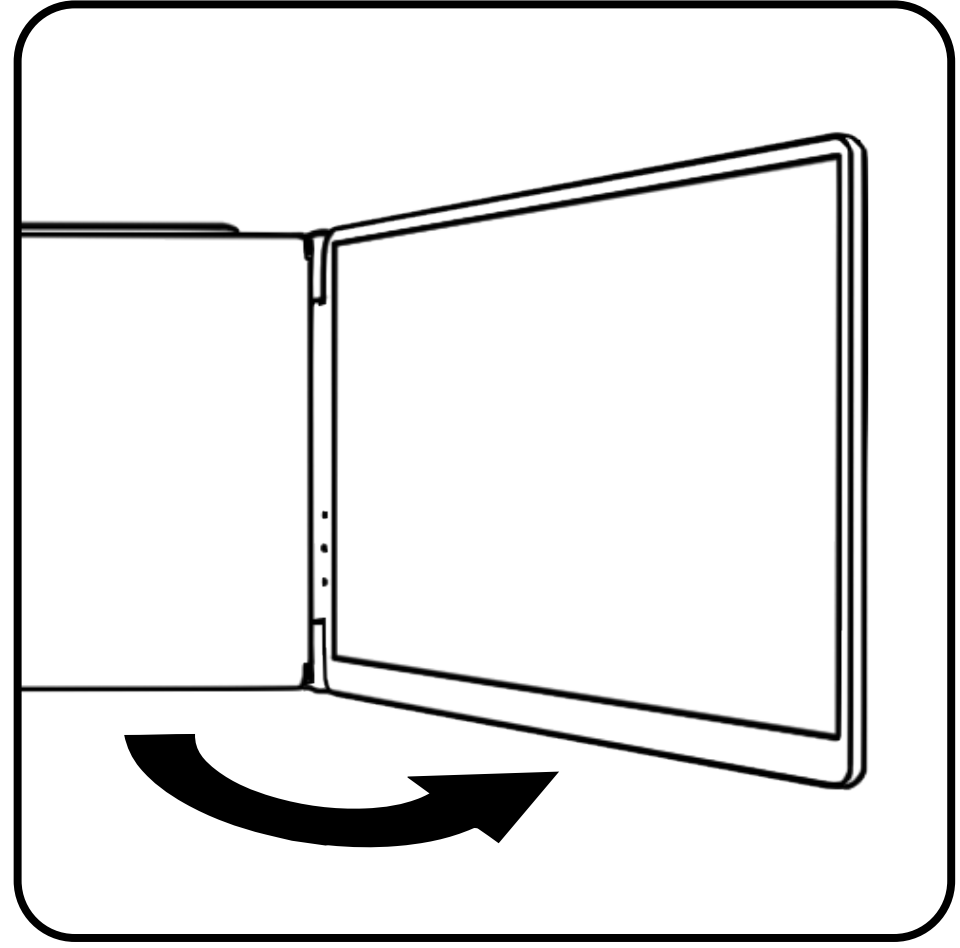


STEP BY STEP GUIDE

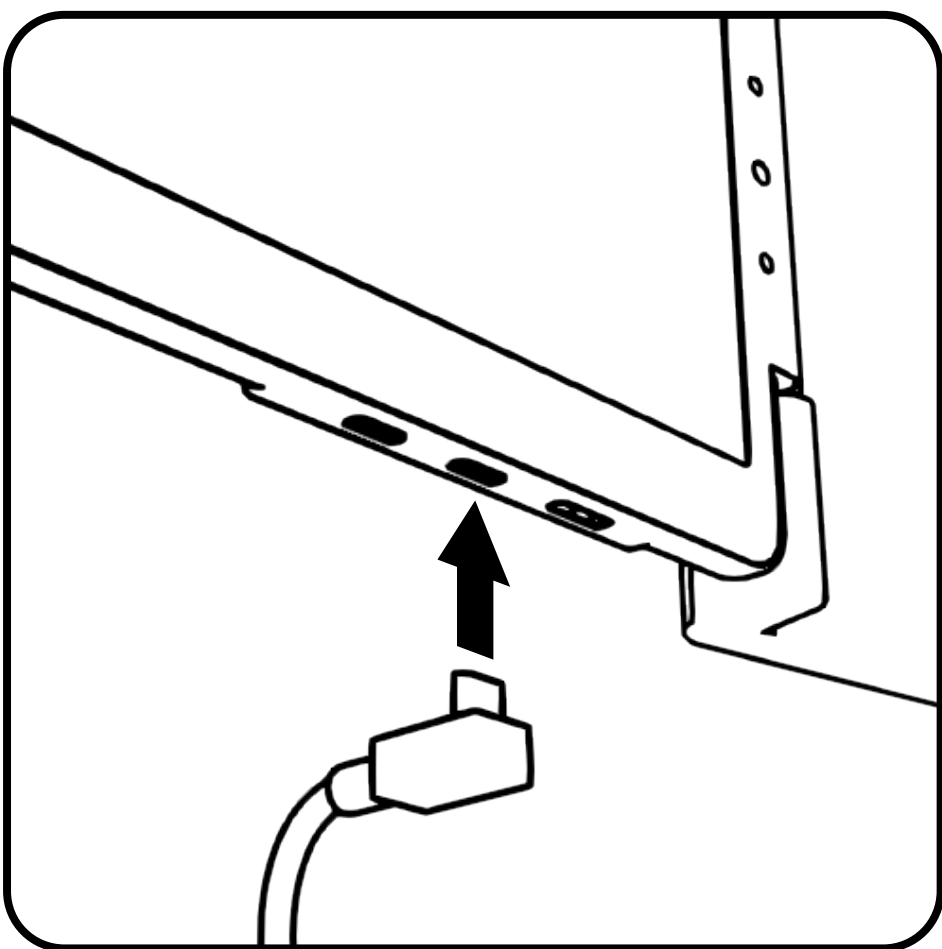
1. Extend the Monduo to its intermediate holding position



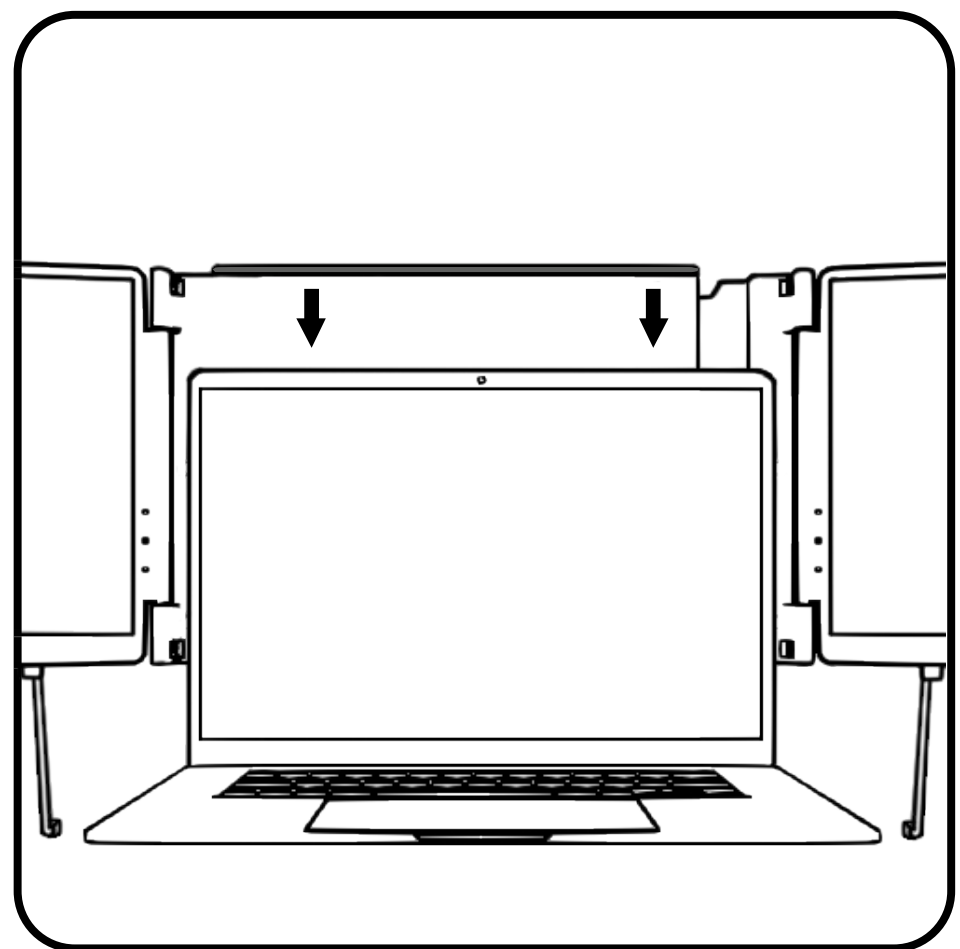
2. Open the Monduo displays outward.



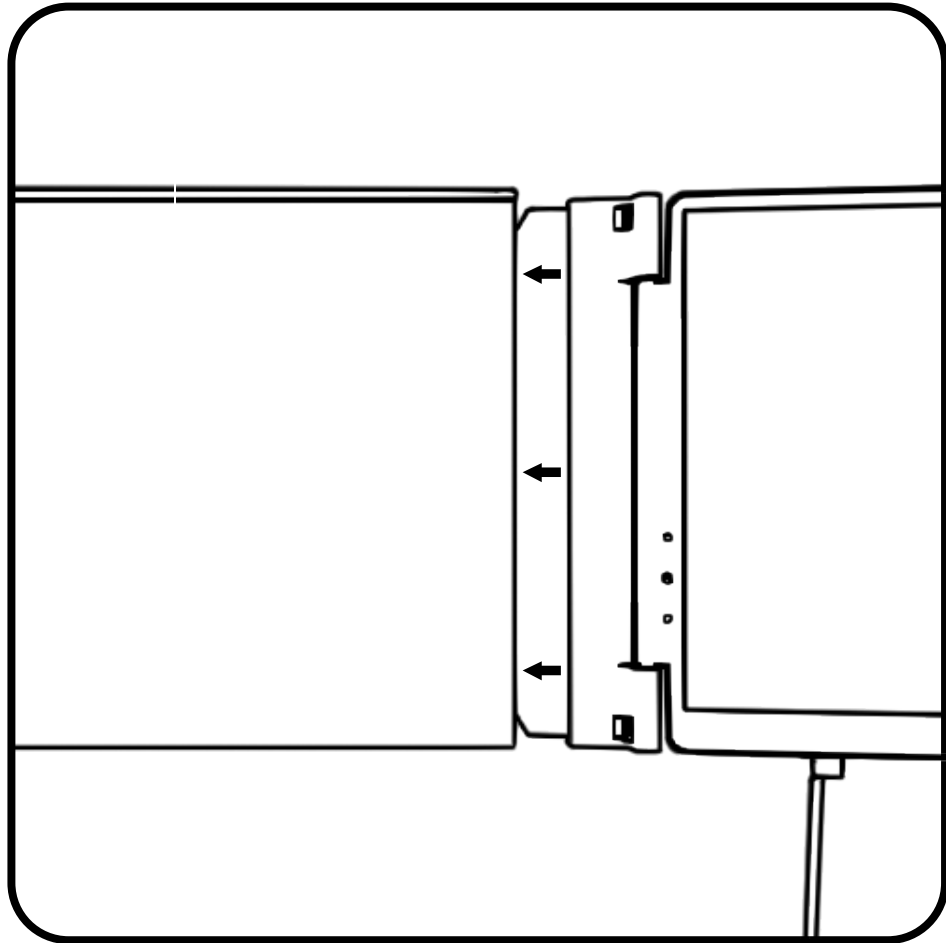
3. Plug the necessary cable/s in to the Monduo.



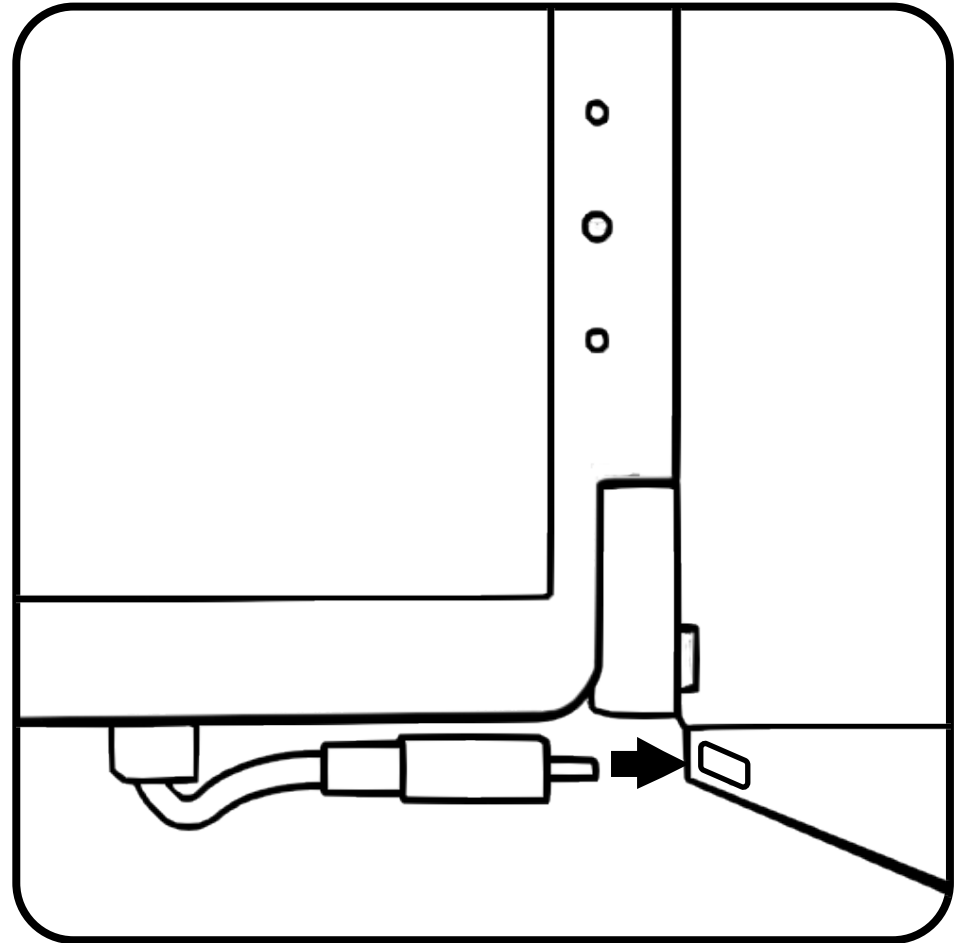
4. Mount the Monduo onto your laptop.



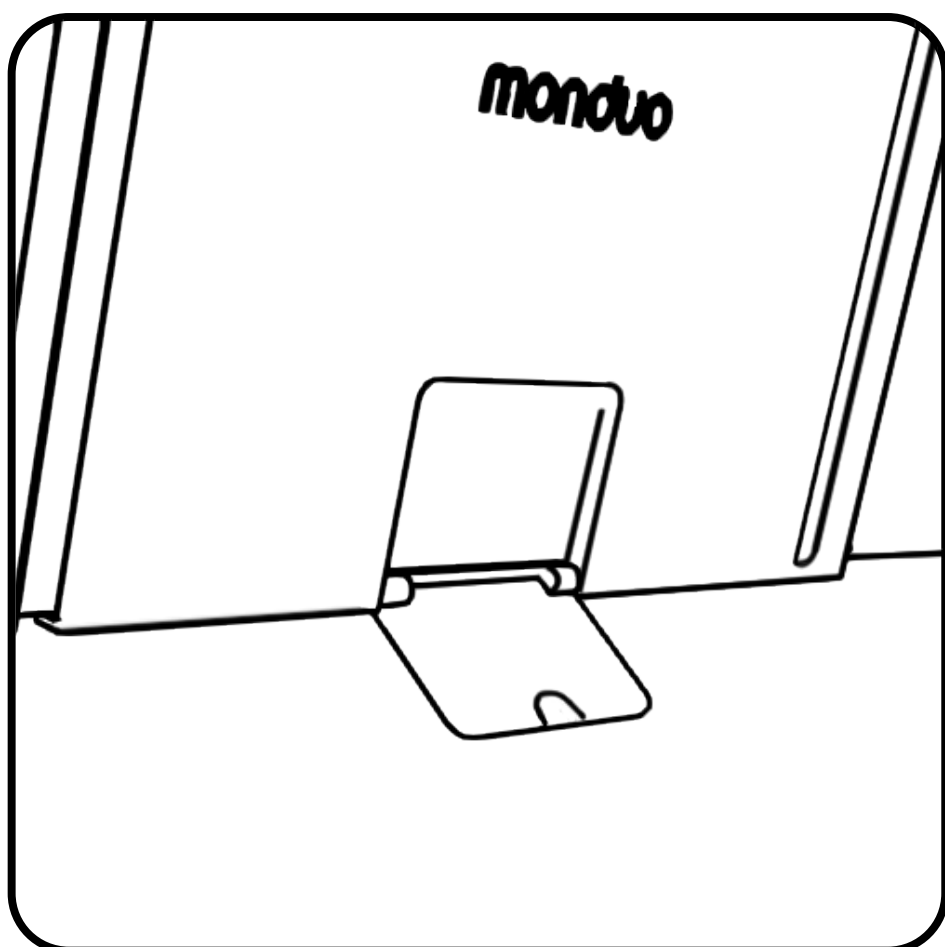
5. Adjust the Monduo to the width of your laptop.



6. Connect the cables to your laptop from the Monduo.



7. Flap open the kickstand for support.



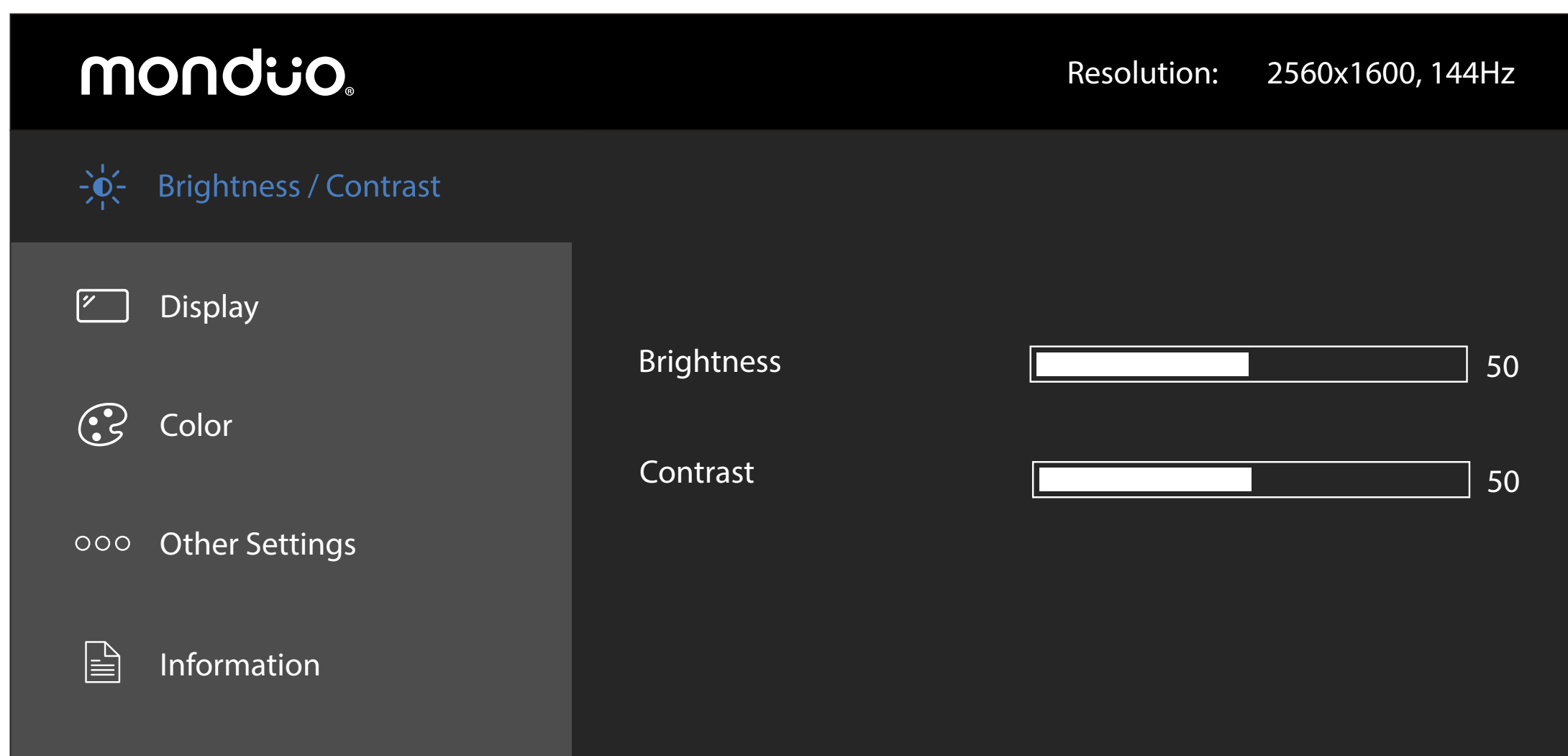
8. Scan this QR to download and install the Monduo app.



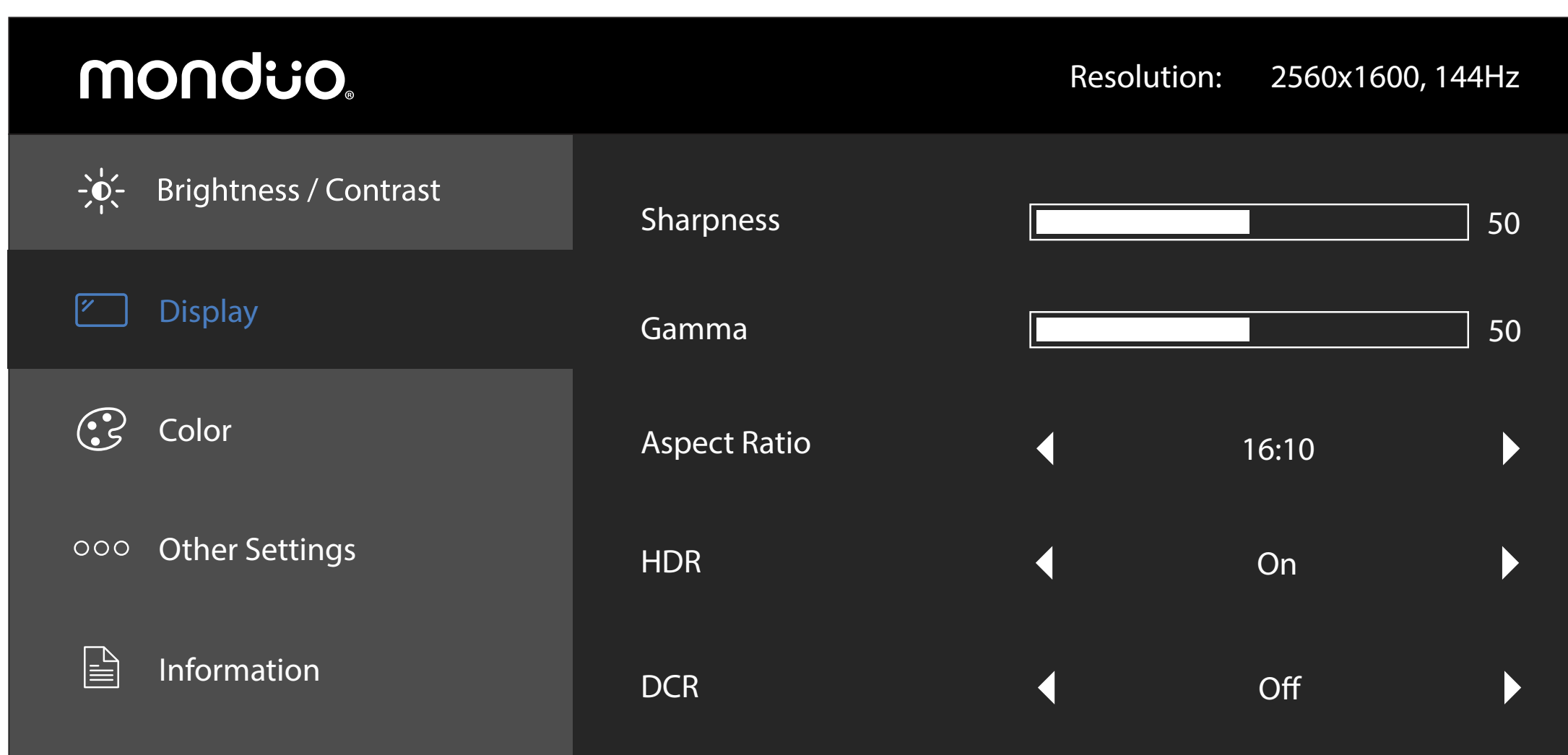
On-Screen Display Menu

The Monduo On-Screen Display Menu allows you to adjust a range of settings from brightness, contrast, resolution, and color. This section is aimed to help you navigate through all the menus.

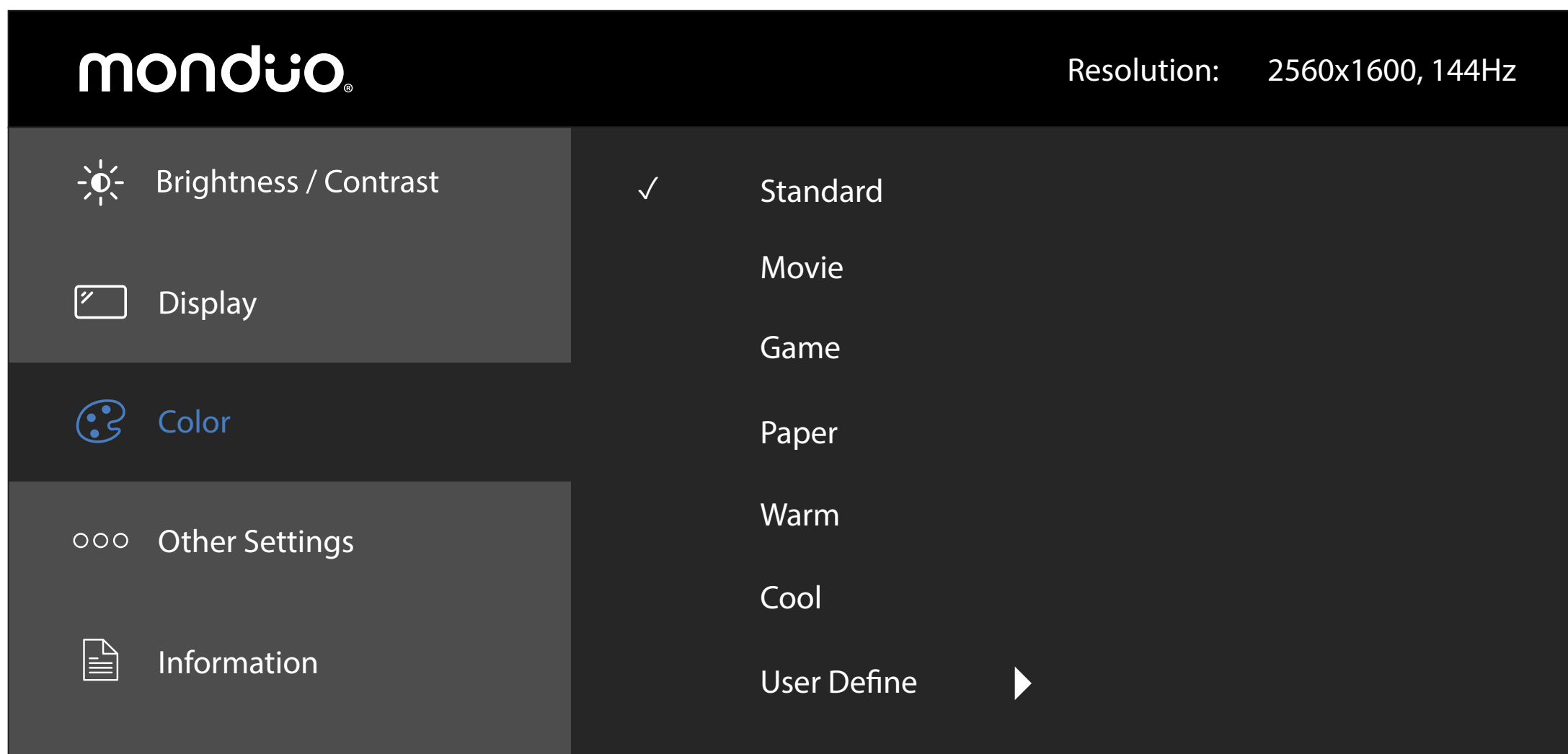
1. Brightness and Contrast



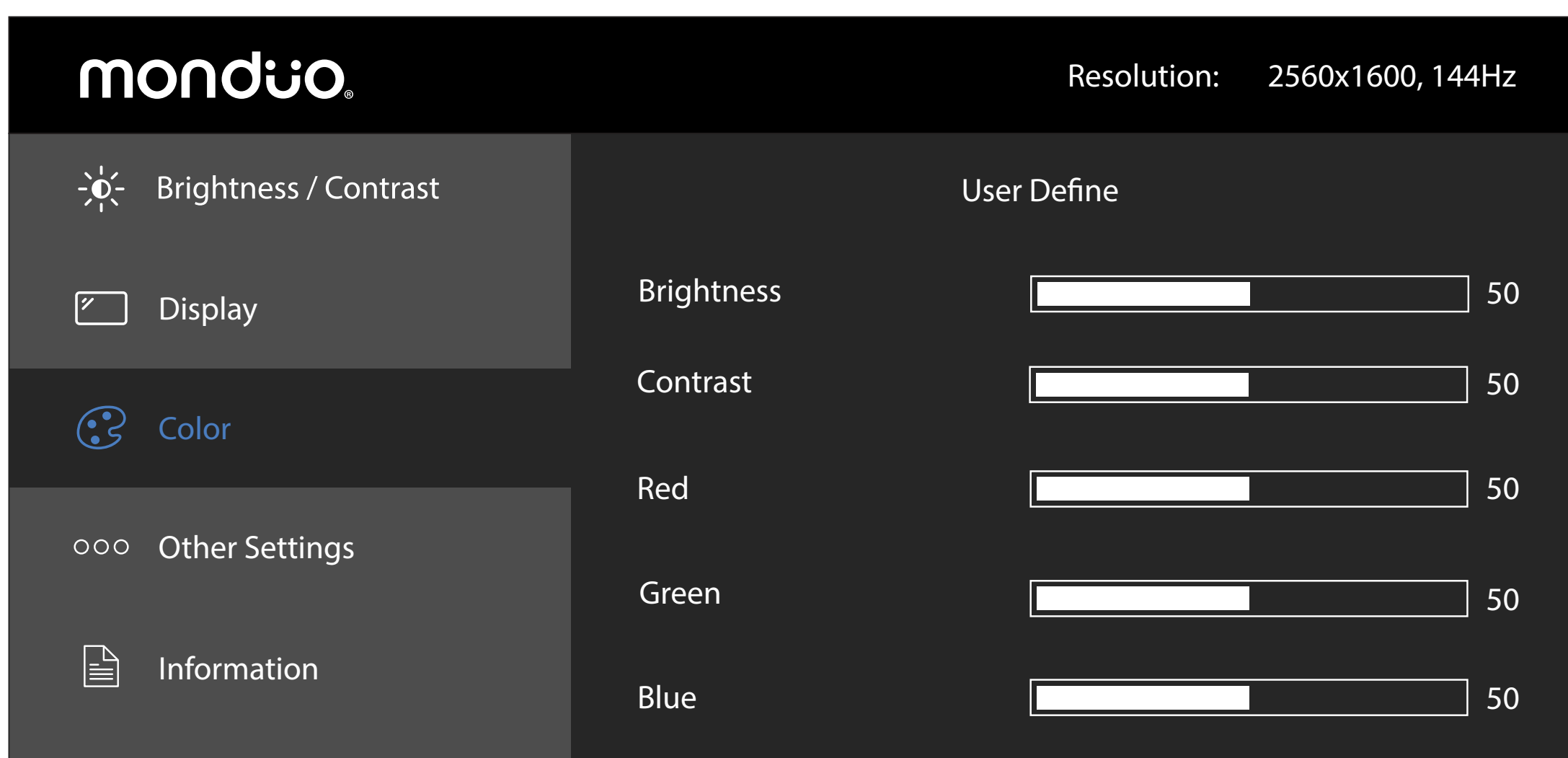
2. Display



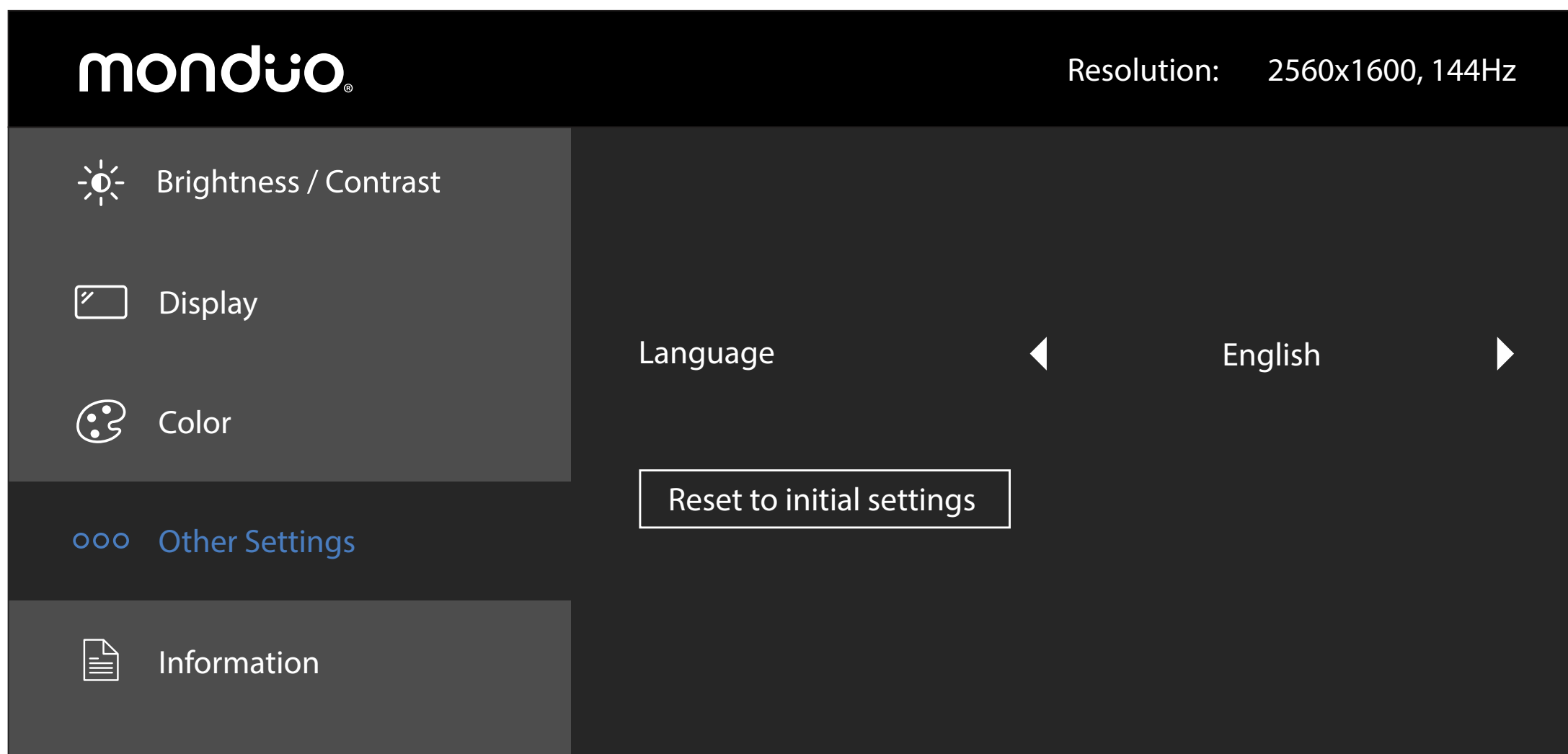
3. Color



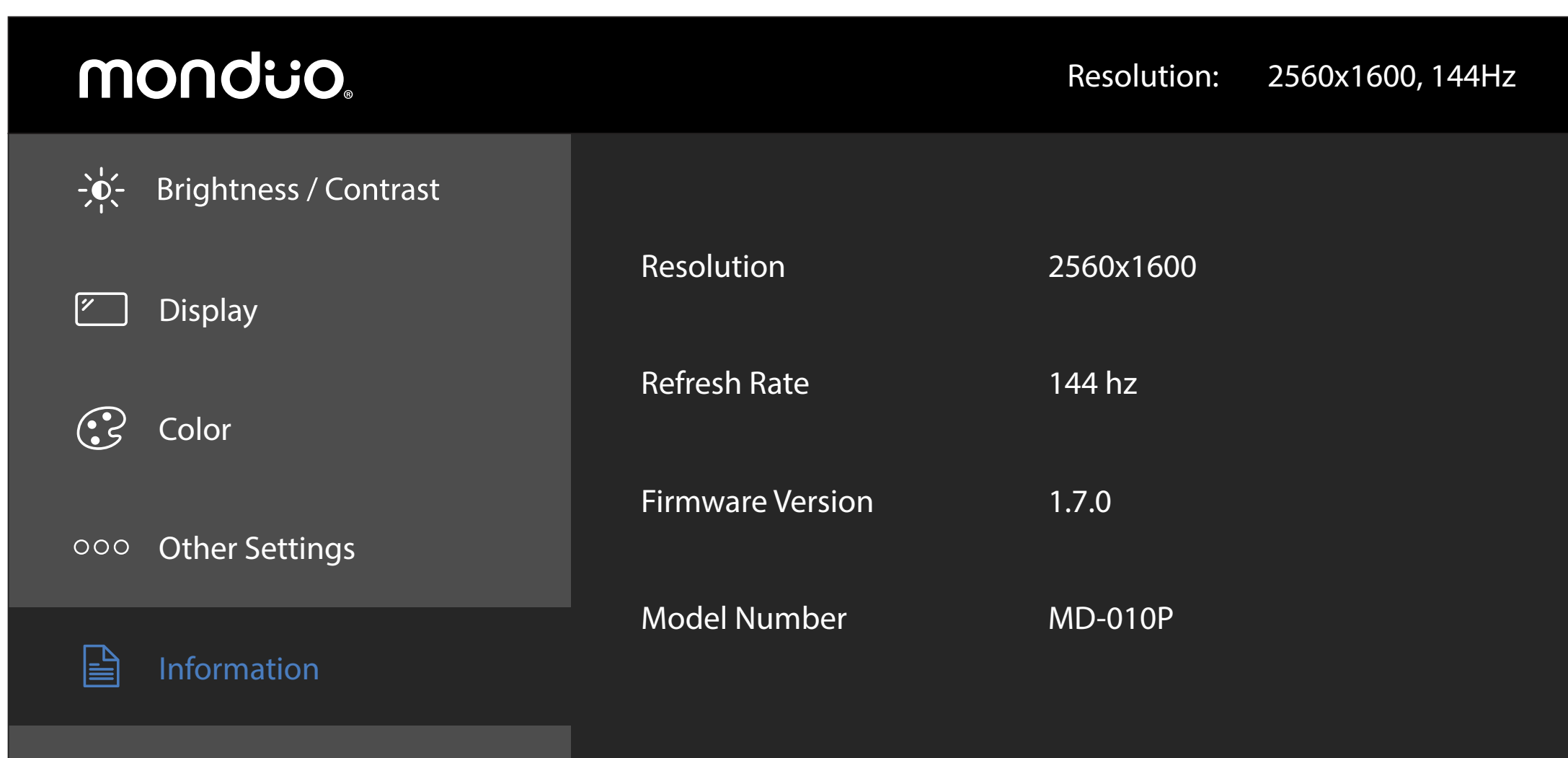
3.1 Color - User Define



4. Other Settings



5. Information



Display Configuration (MacOS with Monduo App)



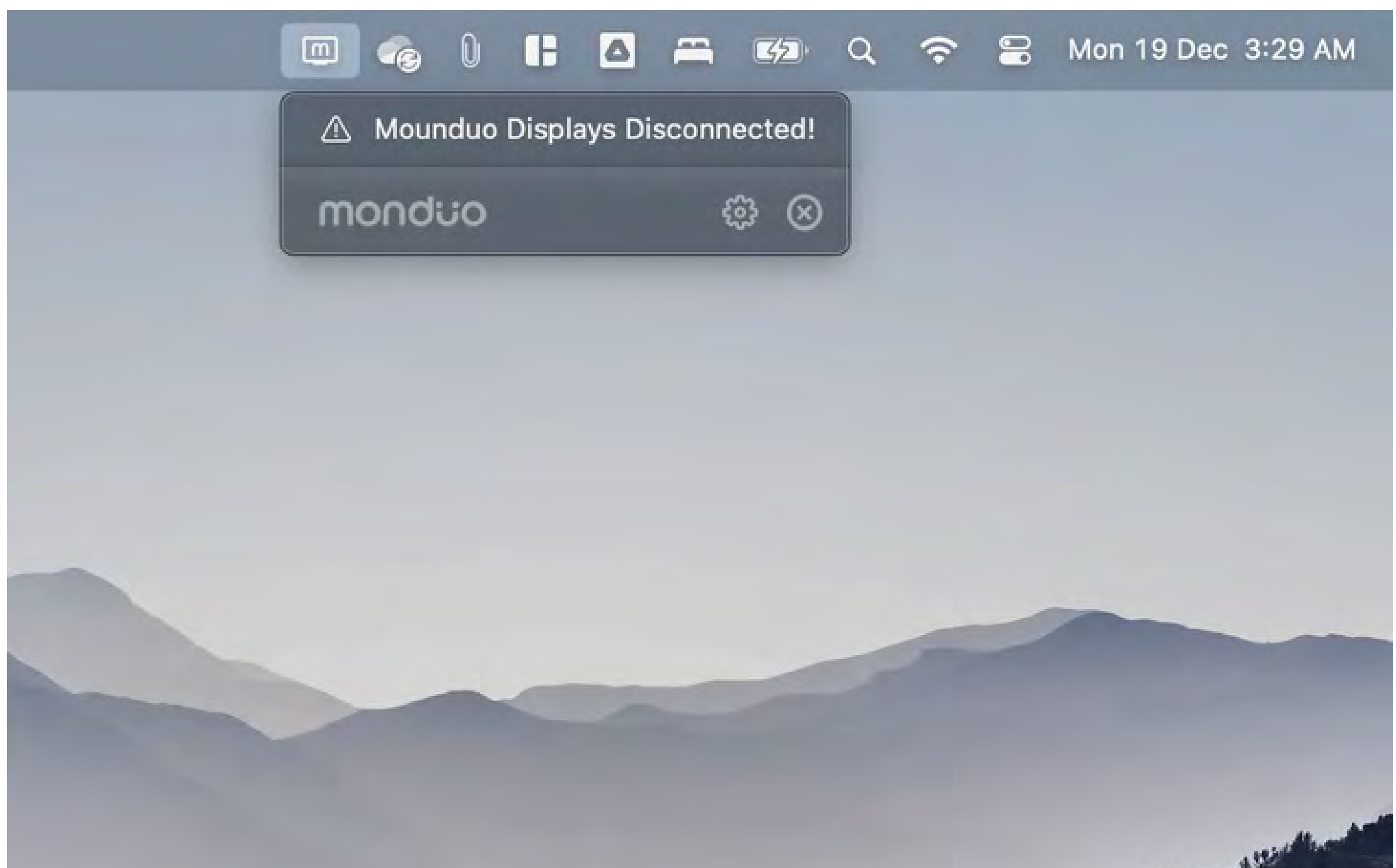
1. Software Installation

Once you have downloaded the Monduo app, please drag the Monduo app icon into the Applications folder. If you have not downloaded the Monduo app, please check page 6 for the QR code.



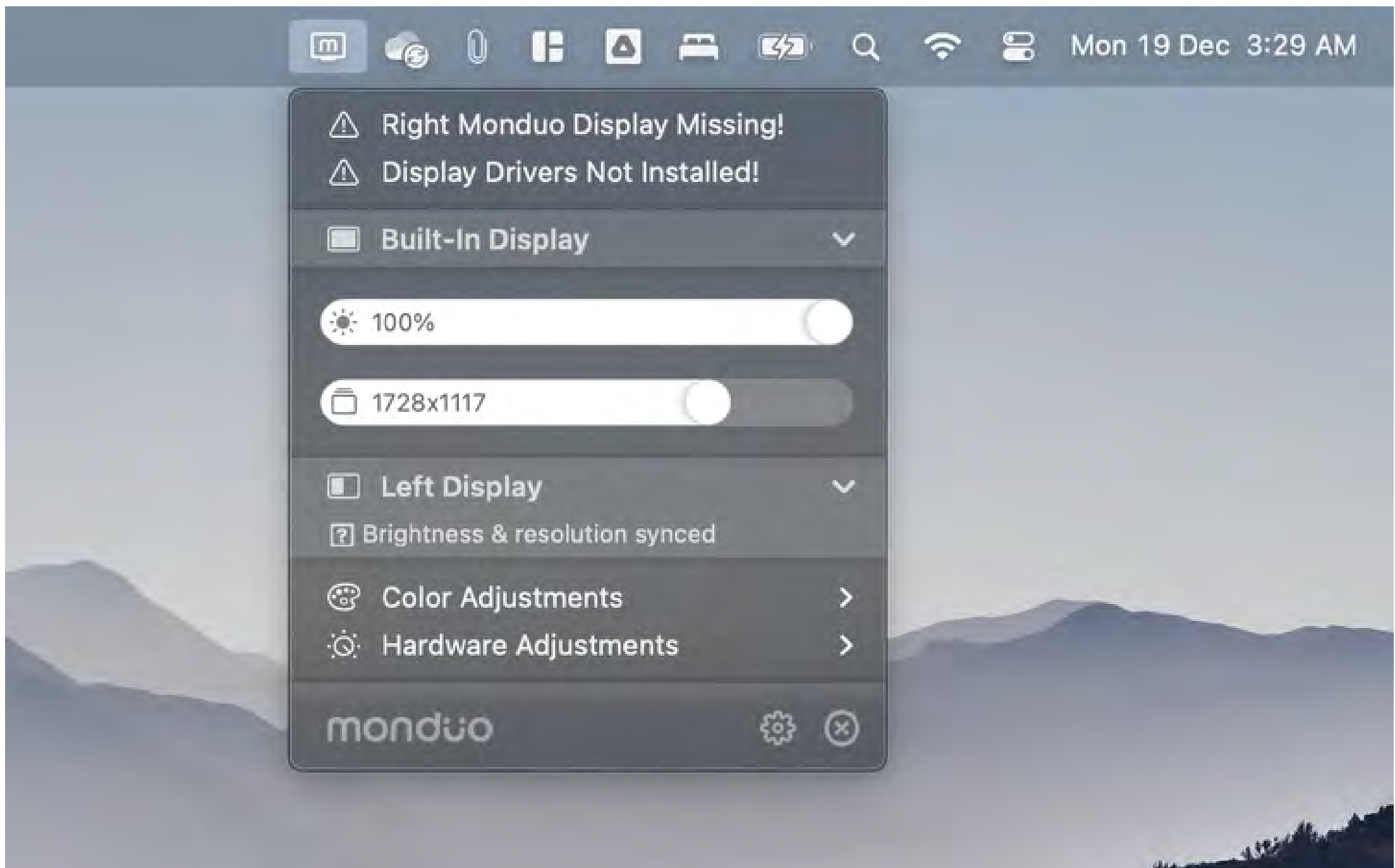
2. Start the Monduo App

After you have dragged the Monduo app into the Applications folder, click on the LAUNCHPAD, then click on the Monduo app to start it.



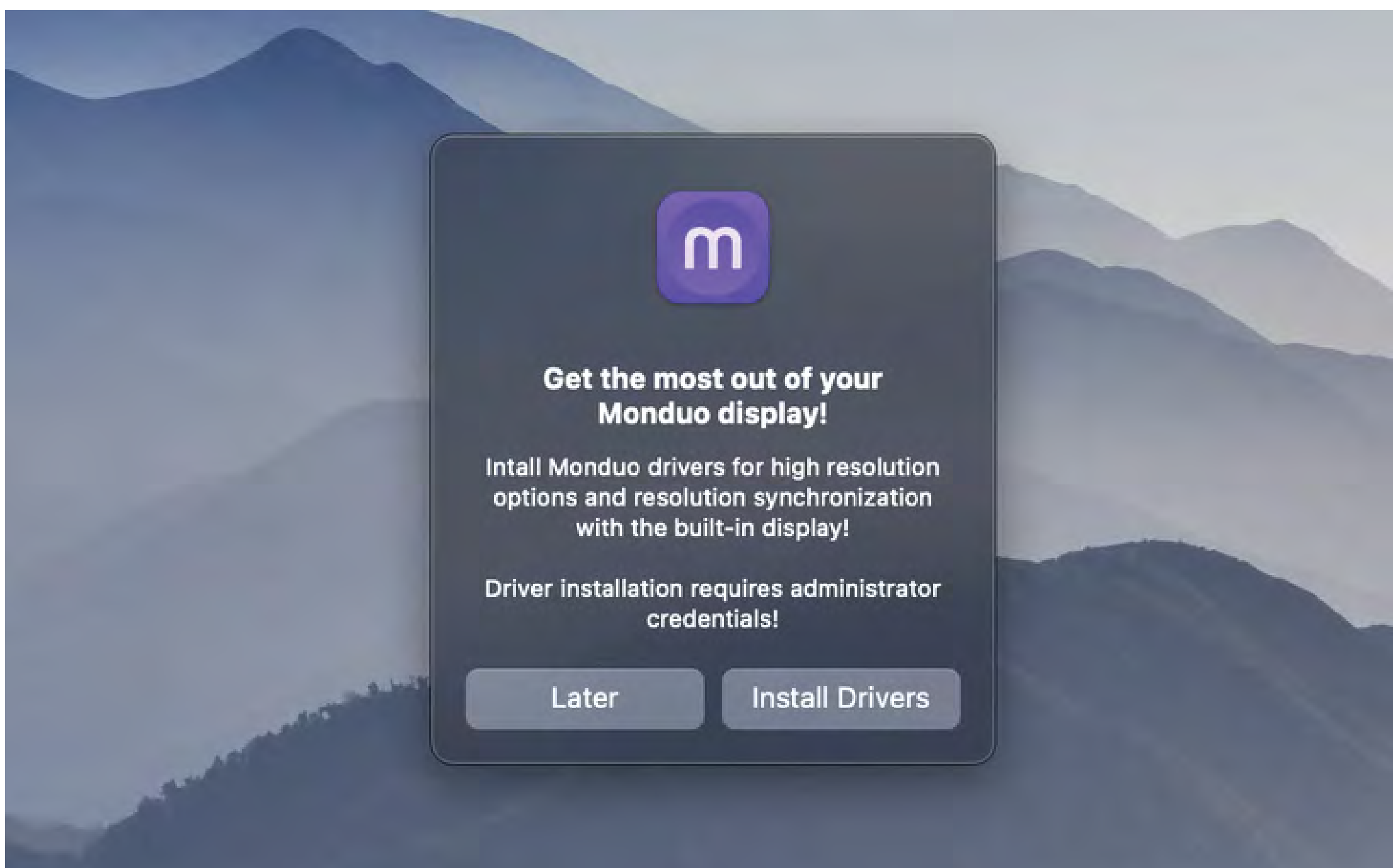
3. First Time Startup

Congratulations and welcome to the Monduo app! We just got started. In this instance we get a message saying the Monduo displays are not connected. Connect the displays to your laptop. (Note: This app will only work with Monduo displays and the built-in displays for your laptop).



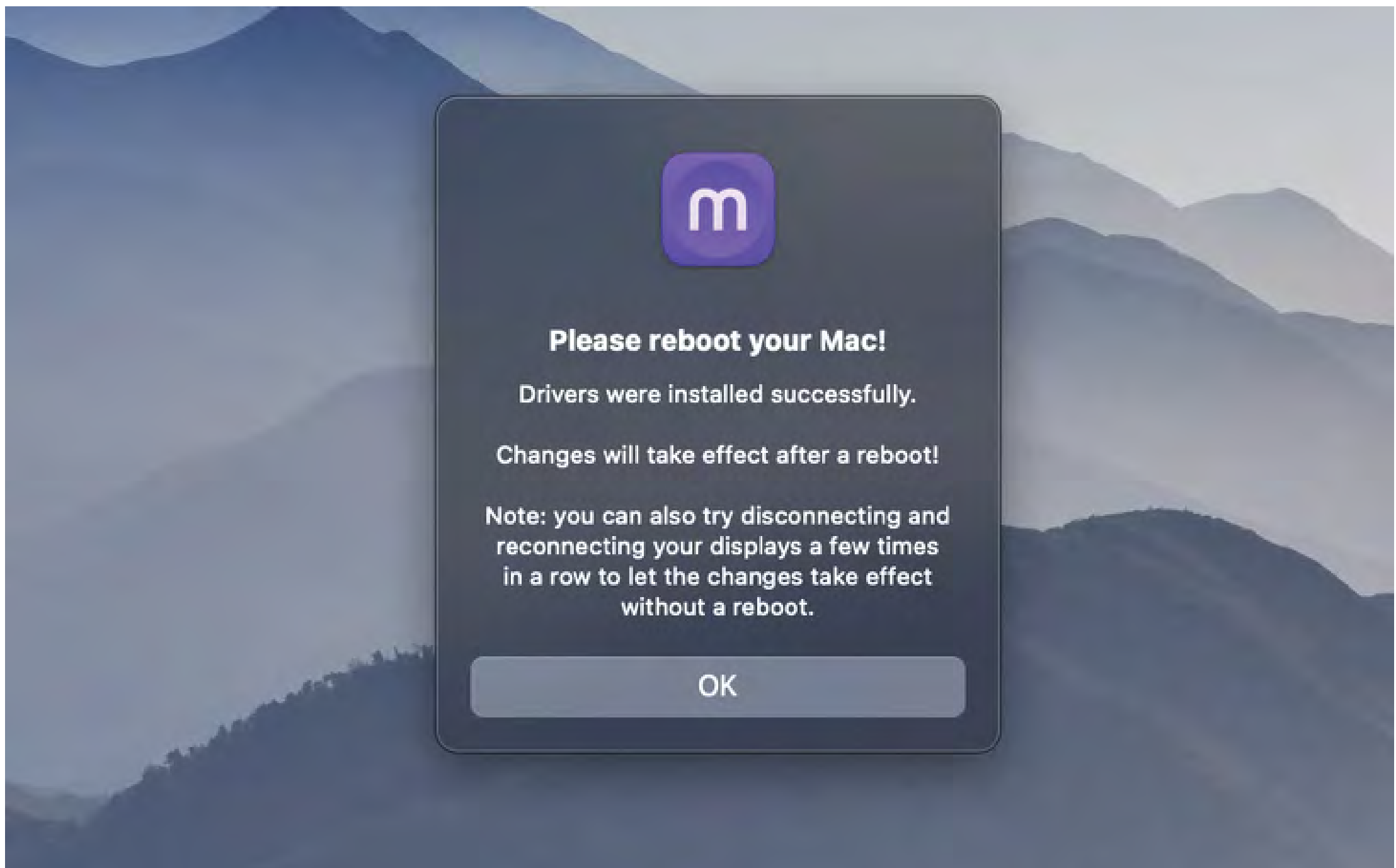
4. Display Drivers

If you have not plugged in your display, please connect them. Make sure both displays are connected or there will be a reminder in the Monduo app. There is also a reminder that the Display Drivers has not been installed. Click on that text to start the Driver installation.



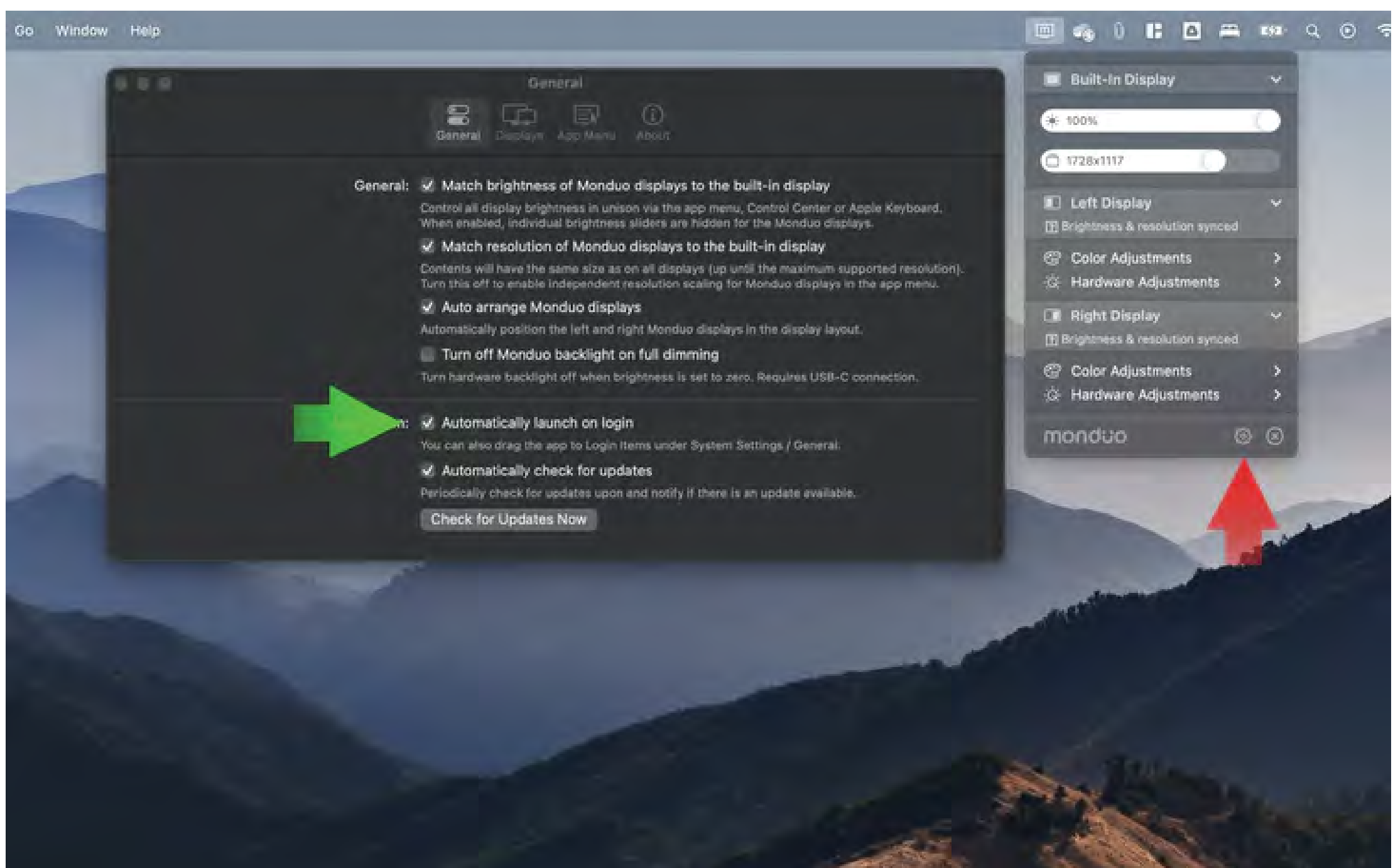
5. Install Drivers

You will be prompted to install the Monduo drivers. This will enable high resolution (HiDPI) in macOS and better viewing experience. Click Install Drivers and enter your password credentials to proceed.



6. Install Complete




You have successfully installed the Monduo app and have full access to all our features. You can either reboot the Laptop or disconnect and reconnect the USB cable to your Laptop.

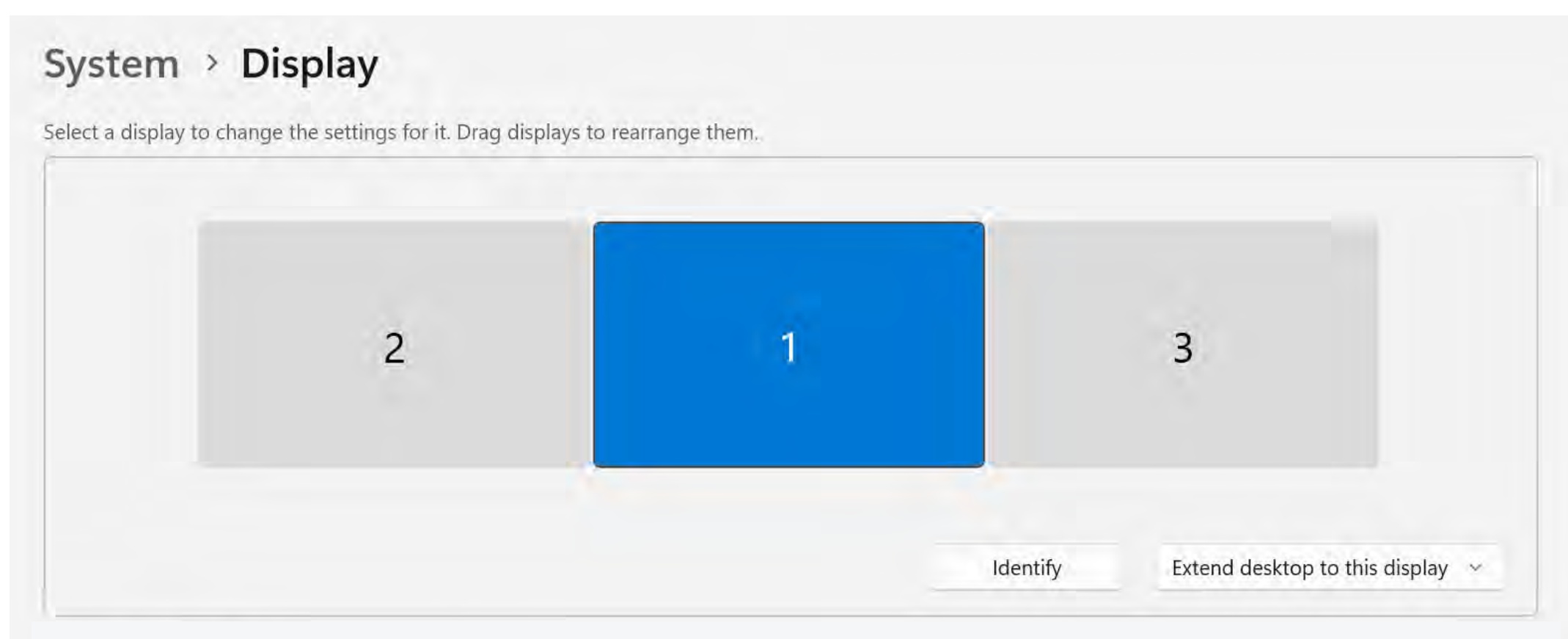


7. Auto-launch on startup

Before you reset, enable the Monduo app is launching at startup by clicking on the Monduo icon and then click on the settings icon as indicated with a red arrow as illustrated. Click the settings icon, then on "Automatically launch on login" check box and you will not need to worry about starting the app again.

Display Configuration (Windows)

1. Go to Display Settings 
(Start  Settings  > System > Display)
2. Click Identify. This will detect your Monduo device, and a number will be assigned to all displays. (See figure below)
3. Arrange your displays by clicking and dragging numbered screens to the correct configuration.
(2 and 3 might be swapped depending on your laptop).
4. Configure your displays to “Extend desktop to this display”



Tech Specs

Display

Panel Size : 16 Inch

Refresh Rate (max) : 144Hz

Color Space : DCI-P3 100% typ

Display Colors : 16.7M 8 bit

Screen Type : IPS Level

Backlight : LED

Aspect Ratio : 16:10

Resolution : 2560 x 1600

Display Viewing Area (HxV) :
344.678x 215.424mm

Display Surface : Non-Glare

Pixel Pitch : 44.88(h) x 134.64(v)

Brightness (Typ.) : 500 cd/m²

Response Time : Up to 3ms

Size and Weight

Width : 38.8 cm

Depth : 2.8 cm

Height : 24.4 cm

Weight : 1.9 kg

FCC Compliance

This part complies with Part 15 of the FCC Rules. Operation is subject to the following two conditions:

- (1) this device may not cause harmful interference
- (2) this device must accept any interference received, including interference that may cause undesired operation

This device has been tested and found to comply with the limits for a Class B digital device pursuant to Part 15 of the FCC Rules. These limits are designed to provide reasonable protection against harmful interference in a residential installation.

This device generates, uses, and can radiate radio frequency energy and, if not installed and used in accordance with the instructions, may cause harmful interference to radio communications. However, there is no guarantee that interference will not occur in a particular installation. If this device does cause harmful interference to radio or television reception, which can be determined by turning the device off and on, the user is encouraged to try to correct the interference by one or more of the following measures:

- Reorient or relocate the receiving antenna
Increase the separation between the device and receiver
- Connect the device into an outlet on a circuit different from that to
- which the receiver is connected
- Consult the dealer or an experienced radio/television technician for help

Warranty

This Limited Warranty gives You specific legal rights, and You may have other rights which vary from country to country or state to state.

We warrant that during the warranty period, the Product (as defined below) will be free from defects in manufacturing, materials and workmanship under normal use for the Warranty Period (as defined below), subject to conditions contained in this limited warranty. We do not warrant, and are not responsible for, any laptop or other device made by anyone other than Monduo, Ltd. We limit the duration and remedies of all implied warranties, including without limitation the warranties of merchantability and fitness for a particular purpose to the duration of this express limited warranty.

Who May Use This Warranty?

Monduo, Ltd. ("We", "Monduo" or "Us") extend this limited warranty only to the consumer who originally purchased the Product ("You") from us or a Monduo-authorized dealer, unless otherwise prohibited by law. This Limited Warranty is extended only to the original end-use customer, and will not be extended to any other person or transferee.

What Does This Warranty Cover?

This Limited Warranty covers any defects in manufacturing, material or workmanship in the Product under normal use for the Warranty Period, subject to conditions contained in this limited warranty. During the Warranty Period, We will repair or replace, at no charge, Products or parts of a Product that prove defective because of improper manufacturing, material or workmanship.

How Long Does The Coverage Last?

The Warranty Period is 1 year from the original date of purchase of the Product.

Sole and Exclusive Remedy; What Will We Do to Correct the Problem?

If a manufacturing, material or workmanship defect arises regarding any Product, and We receive a valid claim no later than fifteen (15) calendar days after the expiration of the Warranty Period, We will, at our sole option, provide one of the following remedies to satisfy a proper claim under this limited warranty: Repair or replace any defective or malfunctioning part at no charge, using new or refurbished replacement parts. Replace this product with a new Monduo 16 Inch Pro Duo Display (the “Product”) at no charge. For purposes of this Limited Warranty, “refurbished” means a product or part that has been substantially returned to its original specifications. In the event of a defect, these are customer’s sole and exclusive remedies.

Exclusions and Limitations; What Does the Warranty Not Cover?

Except for the remedies expressly set forth above or to the extent restricted or prohibited by applicable law, the entire risk as to the quality and performance of the Products is with the customer, and the customer assumes the entire cost of repair should the Products prove defective following their purchase. In addition to and without limiting the generality of the foregoing disclaimers, this Limited Warranty does not, under any circumstances, cover any defects or damage due to: (a) transportation; (b) storage; (c) improper or unreasonable use or maintenance; (d) failure to follow the product instructions; (e) modifications; (f) unauthorized repair; (g) normal wear and tear or otherwise due to the normal aging of the Product; (h) cosmetic damage, including but not limited to scratches, dents and broken plastic or screen unless failure has occurred due to a defect in manufacturing, materials or workmanship; (i) damages caused by use with non-Monduo products; or (j) external causes such as accidents, abuse, or other actions or events beyond our reasonable control. If this product is returned to Monduo, Inc., this product must be insured during shipment, with the insurance and shipping charges prepaid by you. If this product is returned uninsured, you assume all risks of loss or damage during shipment.

FOR CUSTOMERS WHO ARE COVERED BY AN APPLICABLE CONSUMER PROTECTION LAW OR REGULATION IN THEIR STATE, PROVINCE, OR COUNTRY OF PURCHASE OR RESIDENCE, THE BENEFITS TO CUSTOMER UNDER THIS LIMITED WARRANTY ARE IN ADDITION TO OTHER RIGHTS AND REMEDIES OF CUSTOMER UNDER SUCH LAWS OR REGULATIONS. SUCH BENEFITS MAY INCLUDE ADDITIONAL WARRANTIES OR RIGHTS RELATING TO THE PERFORMANCE OF THE PRODUCT AND REMEDIES APPLICABLE IN THE EVENT OF A DEFECT. THIS LIMITED WARRANTY WILL BE INTERPRETED UNDER THE LAWS OR REGULATIONS THAT APPLY TO CUSTOMER IN ANY STATE, PROVINCE, OR COUNTRY, AND ANY PROVISION OF THIS LIMITED WARRANTY THAT CONFLICTS WITH ANY SUCH CUSTOMER RIGHTS OR BENEFITS IS NOT APPLICABLE TO CUSTOMERS COVERED BY SUCH LAW OR REGULATION, SO THE EXCLUSIONS AND LIMITATIONS SET OUT IN THIS LIMITED WARRANTY MAY NOT APPLY, OR MAY NOT FULLY APPLY, TO CUSTOMER.

Warranty Disclaimers

EXCEPT AS EXPRESSLY SET FORTH ABOVE, EACH PRODUCT IS PROVIDED SOLELY ON AN “AS IS” BASIS AND WE MAKE NO OTHER WARRANTIES OF ANY KIND. TO THE MAXIMUM EXTENT PERMITTED BY APPLICABLE LAW, WE SPECIFICALLY DISCLAIM AND EXCLUDE ALL OTHER WARRANTIES, WHETHER EXPRESS, IMPLIED OR STATUTORY, INCLUDING, WITHOUT LIMITATION, ANY IMPLIED WARRANTIES OF NON-INFRINGEMENT, QUIET ENJOYMENT, MERCHANTABILITY OR FITNESS FOR A PARTICULAR PURPOSE. IF SUCH DISCLAIMER OF ANY IMPLIED WARRANTY IS NOT PERMITTED BY LAW, THE DURATION OF SUCH IMPLIED WARRANTY IS LIMITED TO THE DURATION OF THE WARRANTY PERIOD APPLICABLE TO THE PRODUCT AS SET FORTH ABOVE. SOME STATES, PROVINCES AND COUNTRIES DO NOT ALLOW LIMITATIONS ON HOW LONG AN IMPLIED WARRANTY LASTS, SO THE ABOVE LIMITATION MAY NOT APPLY TO CUSTOMER. IF APPLICABLE LAW SPECIFIES A MINIMUM WARRANTY PERIOD THAT IS LONGER THAN THE APPLICABLE WARRANTY PERIOD SET FORTH IN THIS LIMITED WARRANTY, THEN THE APPLICABLE WARRANTY PERIOD FOR PRODUCTS SUBJECT TO SUCH APPLICABLE LAW WILL BE CONFORMED TO THE MINIMUM PERIOD SO REQUIRED. THIS LIMITED WARRANTY GIVES CUSTOMER SPECIFIC LEGAL RIGHTS AND CUSTOMER MAY ALSO HAVE OTHER RIGHTS WHICH VARY FROM STATE TO STATE AND PROVINCE TO PROVINCE AND FROM COUNTRY TO COUNTRY.

Limitation of Liability

IN NO EVENT, UNDER ANY CAUSE OF ACTION OR THEORY OF LIABILITY, WILL WE, OUR DISTRIBUTORS, OR SUPPLIERS BE LIABLE TO CUSTOMER OR ANY THIRD PARTY FOR ANY INDIRECT, INCIDENTAL, CONSEQUENTIAL, SPECIAL, EXEMPLARY OR PUNITIVE DAMAGES, OF ANY NATURE WHATSOEVER, ARISING OUT OF THE USE OF OR INABILITY TO USE ANY PRODUCT, INCLUDING, WITHOUT LIMITATION, PROPERTY DAMAGE, LOSS OF VALUE OF THE PRODUCT OR ANY THIRD PARTY PRODUCTS THAT ARE USED IN OR WITH THE PRODUCT, OR LOSS OF USE OF THE PRODUCT OR ANY THIRD PARTY PRODUCTS THAT ARE USED IN OR WITH THE PRODUCT, EVEN IF WE HAVE BEEN ADVISED OF THE POSSIBILITY OF SUCH DAMAGES. WITHOUT LIMITING THE FOREGOING, CUSTOMER UNDERSTANDS AND AGREES THAT WE HAVE NO LIABILITY FOR ANY DAMAGE OR DESTRUCTION TO CUSTOMER ELECTRONICS DEVICES OR OTHER PERSONAL PROPERTY THAT ARE USED WITH THE PRODUCT, INCLUDING, WITHOUT LIMITATION, LAPTOPS, OR OTHER HANDHELD DEVICES, OR ANY LOSS OF DATA CONTAINED IN THE FOREGOING DEVICES. NOTWITHSTANDING ANY DAMAGES THAT CUSTOMER MIGHT INCUR FOR ANY REASON WHATSOEVER (INCLUDING, WITHOUT LIMITATION, ALL DAMAGES REFERENCED HEREIN AND ALL DIRECT OR GENERAL DAMAGES IN CONTRACT, TORT (INCLUDING NEGLIGENCE) OR OTHERWISE), THE ENTIRE AGGREGATE LIABILITY OF MONDUO AND ANY OF ITS DISTRIBUTORS AND/OR SUPPLIERS WILL BE LIMITED TO THE AMOUNT ACTUALLY PAID BY CUSTOMER FOR ANY PRODUCT GIVING RISE TO LIABILITY. SOME STATES, PROVINCES, COUNTRIES DO NOT ALLOW THE EXCLUSION OR LIMITATION OF INCIDENTAL OR CONSEQUENTIAL DAMAGES, SO THE ABOVE LIMITATION OR EXCLUSION MAY NOT APPLY TO CUSTOMER. THE LIMITATIONS OF LIABILITY SET FORTH ABOVE WILL APPLY TO THE MAXIMUM EXTENT PERMITTED UNDER APPLICABLE LAW.

How Do You Obtain Service?

You must email our Customer Service Department at cs@monduo.co during the Warranty Period and provide:

- Your name
- Order number
- Brief written description of the problem

In order to pursue any remedy under this Limited Warranty, you must possess an original, dated receipt as proof of purchase. This product should be properly packed, preferably in the original package, for shipping.