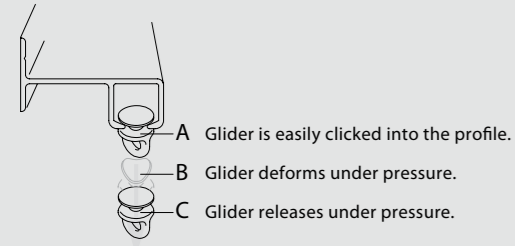


Silent Gliss Safety Curtain Track Systems

Hand drawn safety curtain tracks 6021 and 6290 are designed to minimise the risk of self harm. Unique gliders are used which separate from the profile when a specific weight is applied.

Direct fixing with no gap between profile and wall or ceiling. Suitable for light to medium weight curtains. Ideal for schools and hospitals.



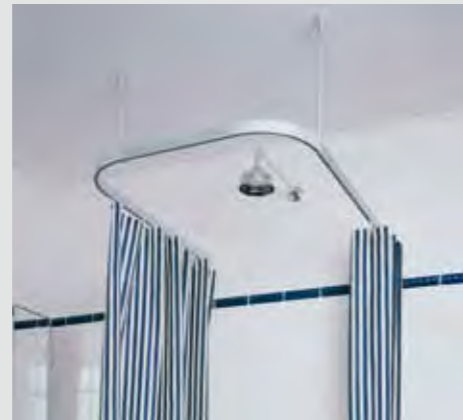
System 6021 – Wall Fix



System 6290 – Ceiling Fix

Other Silent Gliss products

Silent Gliss have a wide range of other window treatments suitable for use in healthcare environments. Please enquire at Silent Gliss or with your local Silent Gliss Cubicle Distributor. All distributors are trained to high standards and all installations carried out by the distributors will conform to HTM66.



Shower rails



Roller blinds



Healthcare Systems

Distributor:
 Solent Blind & Curtain Company Ltd
 Unit 7 Stanton Industrial Estate, Mill Road,
 Regents Park, Southampton, SO15 4JA
 T: 02380 510333
 F: 02380 510101
 E: sales@solentblinds.co.uk
 www.solentblinds.co.uk



Silent Gliss Hospital Cubicle Track Systems

For over 30 years Silent Gliss Hospital cubicle track systems have been the most widely specified and installed systems for hospital networks in the UK and abroad.



Silent Gliss fights cross contamination with BioCote

Biocote aids protection against harmful bacteria including MRSA, E-Coli and Salmonella and decreases the risk of cross contamination.



'There are an estimated 5000 deaths each year directly relating to Hospital Acquired Infections.'

Source: DoH, Public Laboratory Service 1995

Silent Gliss have incorporated the BioCote patent-protected powder coating technology into its' cubicle track system 6101 in white. The anti-microbial coating is applied through a 'heat-seal-oven-baked' process and permanently coats the product in a white finish.

Biocote will never remove the need for cleaning and good hygiene in hospitals and does not claim to disinfect or sterilise products. However, Biocote can support claims to reliably inhibit bacterial growth and reduce risk and therefore complements the existing hygiene process...The SECOND line of defence.

Silent Gliss 6100 – Divider / Cubicle System

Attractive profile combining strength, rigidity and flexibility for clean, unbroken lines in hospital wards. Top channel maximises connection and suspension possibilities and a dustcover strip reduces the risk of cross infection. Standard colour silver or white incorporating Biocote anti-microbial coating. Available with safety device System 6650. Conforms to NHS Estates EFM standard HTM66 for cubicle tracks.



Silent Gliss 6103 – Divider / Cubicle System

The 6103 system has a contemporary rounded profile and boasts similar benefits to System 6101 – strong, rigid and flexible layouts. Standard colour is silver or white. Top channel maximises suspension and connection possibilities and dustcover strip reduces the risk of cross infection.



Silent Gliss 6650 Safety Device System

For use with System 6100

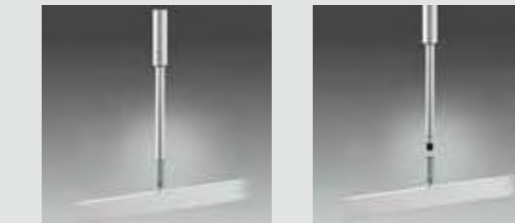
The development of the 6650 Safety Device System comes with over 30 years of experience installing systems in hospitals in the UK and abroad.

Designed for high-risk areas to minimise the opportunity for patient self-harm. The track functions as normal during every day use with the precision engineered safety device only coming into action should an incident occur.

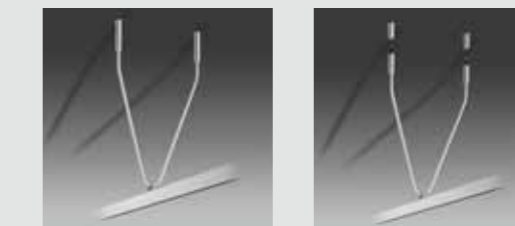
Important

Silent Gliss 6650 System is intended to reduce the risk of self-harm in cubicle situations. In order to work correctly it must be fitted in accordance with the specific 6650 fitting instructions by one of our trained Cubicle Distributors. Failure to do so will reduce its effectiveness. All queries should be reported to Silent Gliss.

If you require any information on quality management procedures please contact Silent Gliss or your local Cubicle Distributor.



The 6651 single hanger safety device incorporates friction-based joints 6675 which progressively separate under known loads, pictured here in the process of: (a) separating / (b) separated



6658 V-hanger incorporating the 6677 V-hanger safety device. 6677 pictured here in the process of: (a) separating / (b) separated



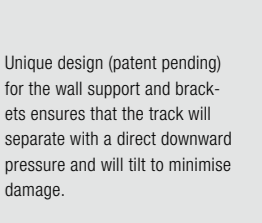
6655 Wall support



Wall support after downward separation



Wall support angle tilt



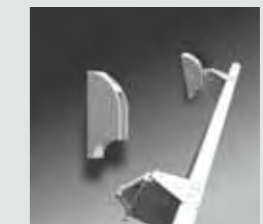
Unique design (patent pending) for the wall support and brackets ensures that the track will separate with a direct downward pressure and will tilt to minimise damage.



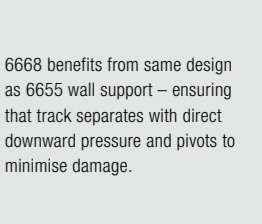
6668 Wall bracket



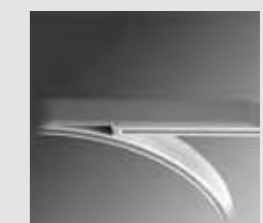
6668 Wall bracket



Bracket – pivot



6668 benefits from same design as 6655 wall support – ensuring that track separates with direct downward pressure and pivots to minimise damage.



Special connecting bridge 6666 reduces the risk of "domino effect" where one cubicle brings down attached systems.

