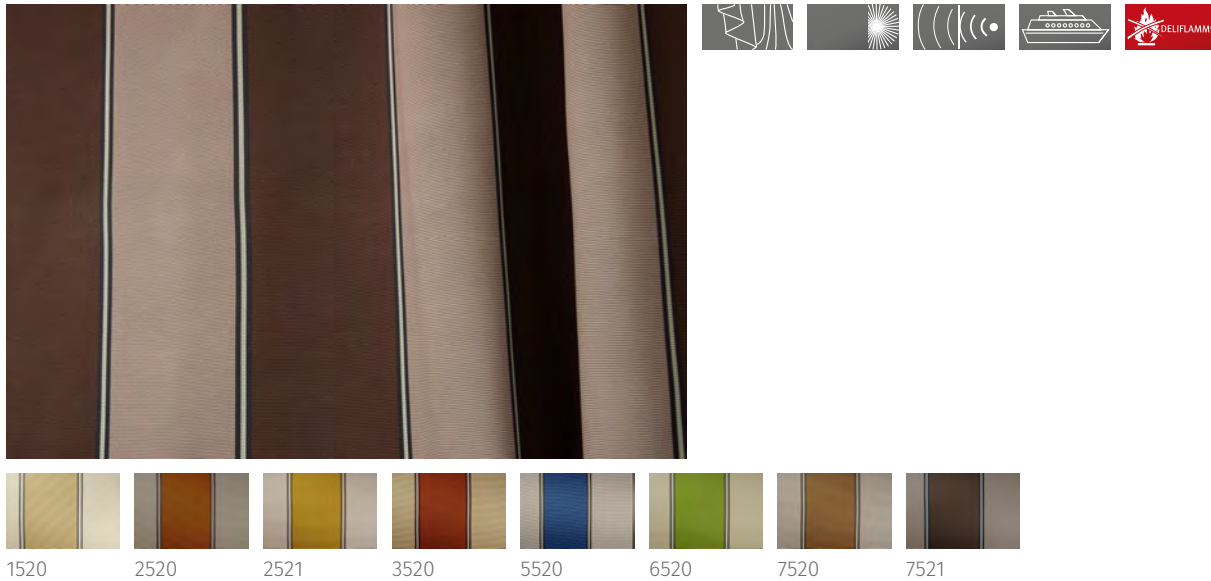




Silvestro DIMOUT

Article Number 33104

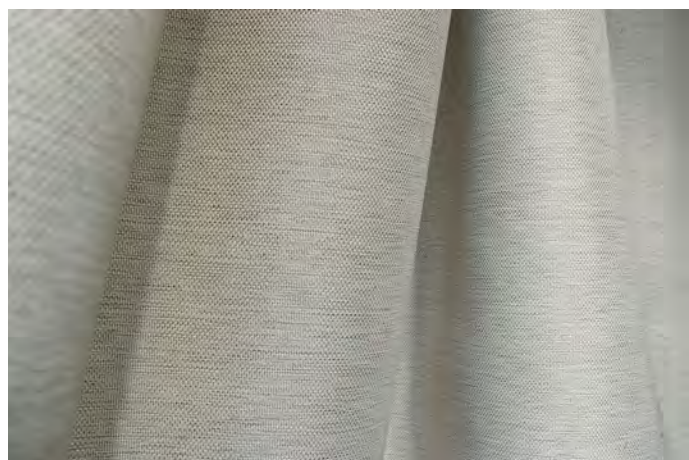


Width	140 cm
Weight	260 g/m ²
Repeat	length approx. - cm, width approx. 34 cm
Composition	100% Polyester FR
Darkening factor	approx. 99 %
Flame resistance	DIN 4102/B1, M1, BS 5867 TYP-B + TYP-C, IMO Res. A471 (XII), EN 13773 ,
Light fastness	4-5
Wash fastness 40°C DIN EN ISO 105 C10	note 4-5
Wash fastness 60°C DIN EN ISO 105 C10	note 4-5
Fabric relaxing washing 40°C DIN EN ISO 6330 DIN EN ISO 5077	warp approx. +/- 1%, weft approx. +/- 1 %
Fabric relaxing washing 60°C DIN EN ISO 6330 DIN EN ISO 5077	warp approx. +/-2%, weft approx. +/-1 %
Rub fastness DIN EN ISO 105-X12	dry: note 4-5, wet: note 4-5
Measured sound absorption coefficient DIN EN ISO 354/DIN EN ISO 11654	0.65
Sound absorption class	C
Care	
Care Health & Care	

The above technical data are average values. These values only describe the technical characteristics and the chemical composition of the delivered goods. Warranties are not given.

Sisto DIMOUT

Article Number 29443



Width	150 cm
Weight	300 g/m ²
Repeat	no repeat
Composition	100% Polyester FR
Darkening factor	The article stands out due to his significant high darkening effect.
Flame resistance	DIN 4102/B1, M1, BS 5867 TYP B, IMO Res. A471 (XII), EN 13773 ,
Light fastness	5-6
Wash fastness 40°C DIN EN ISO 105 C10	note 4-5
Wash fastness 60°C DIN EN ISO 105 C10	note 4-5
Fabric relaxing washing 40°C DIN EN ISO 6330 DIN EN ISO 5077	warp approx. +/-1,5%, weft approx. +/-1 %
Fabric relaxing washing 60°C DIN EN ISO 6330 DIN EN ISO 5077	warp approx. +/-2%, weft approx. +/-1 %
Fabric relaxing dry clean DIN EN ISO 3175-1	warp approx. +/-1,5%, weft approx. +/-1 %
Rub fastness DIN EN ISO 105-X12	dry: note 4, wet: note 4-5
Measured sound absorption coefficient DIN EN ISO 354/DIN EN ISO 11654	0.85

Sound absorption class

B

Care



Care Health & Care



The above technical data are average values. These values only describe the technical characteristics and the chemical composition of the delivered goods. Warranties are not given.

Sora DELILIGHT

Article Number 32652



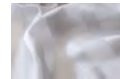
1551



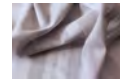
1552



7551





8551



8552



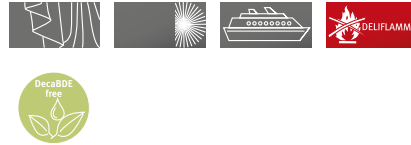
9551


Width	300 cm
Weight	119 g/m ²
Repeat	length approx. - cm, width approx. 7,6 cm
Composition	100% Polyester Trevira CS
Flame resistance	DIN 4102/B1, BS 5867 TYP B, IMO Res. A471 (XII), EN 13773
Light fastness	5-6
Wash fastness 40°C DIN EN ISO 105 C10	note 4-5
Wash fastness 60°C DIN EN ISO 105 C10	note 4-5
Fabric relaxing washing 40°C DIN EN ISO 6330 DIN EN ISO 5077	warp approx. +/-1%, weft approx. +/-1 %
Fabric relaxing washing 60°C DIN EN ISO 6330 DIN EN ISO 5077	warp approx. +/-1%, weft approx. +/-1 %
Fabric relaxing dry clean DIN EN ISO 3175-1	warp approx. +/-1%, weft approx. +/-1 %
Rub fastness DIN EN ISO 105-X12	dry: note 4, wet: note 4
Care	
Care Health & Care	
Other	Nur ohne Bleiband lieferbar.

The above technical data are average values. These values only describe the technical characteristics and the chemical composition of the delivered goods. Warranties are not given.

Space DELIBLACK

Article Number 33319



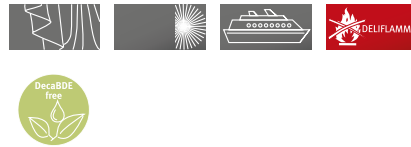
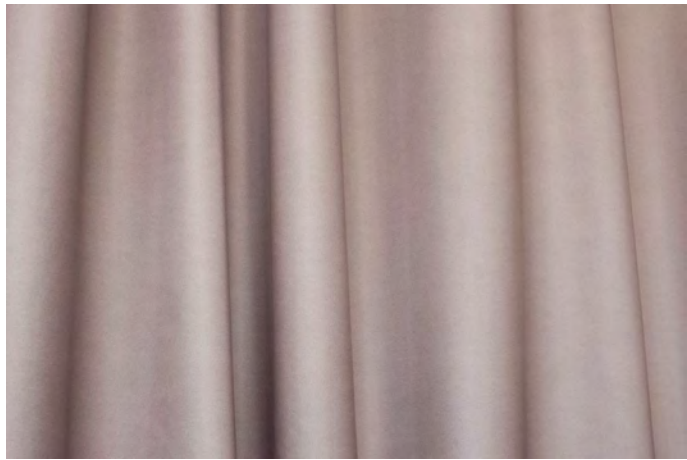
Width	150 cm
Weight	315 g/m ²
Repeat	no repeat
Composition	100% Polyester Acrylat Softbeschichtung
Darkening factor	100 %
Flame resistance	DIN 4102/B1, M1, BS 5867 TYP B, IMO Res. A471 (XII), C1,
Light fastness	4-5
Wash fastness 40°C DIN EN ISO 105 C10	note 4-5
Wash fastness 60°C DIN EN ISO 105 C10	note 4-5
Fabric relaxing washing 40°C DIN EN ISO 6330 DIN EN ISO 5077	warp approx. +/-1%, weft approx. +/-1 %
Rub fastness DIN EN ISO 105-X12	dry: note 4-5, wet: note 4-5
Care	

The above technical data are average values. These values only describe the technical characteristics and the chemical composition of the delivered goods.

Warranties are not given.

Space 300 DELIBLACK

Article Number 33330








Width	300 cm
Weight	315 g/m ²
Repeat	no repeat
Composition	100% Polyester Acrylat Softbeschichtung
Flame resistance	DIN 4102/B1, M1, BS 5867 TYP B, IMO Res. A471 (XII), C1 ,
Light fastness	-
Wash fastness 40°C DIN EN ISO 105 C10	note 4-5
Wash fastness 60°C DIN EN ISO 105 C10	note 4-5
Fabric relaxing washing 40°C DIN EN ISO 6330 DIN EN ISO 5077	warp approx. +/-1%, weft approx. +/-1 %
Fabric relaxing washing 60°C DIN EN ISO 6330 DIN EN ISO 5077	warp approx. +/-1%, weft approx. +/-1 %
Rub fastness DIN EN ISO 105-X12	dry: note 4-5, wet: note 4-5
Care	

The above technical data are average values. These values only describe the technical characteristics and the chemical composition of the delivered goods. Warranties are not given.

Spark DELILIGHT

Article Number 37543

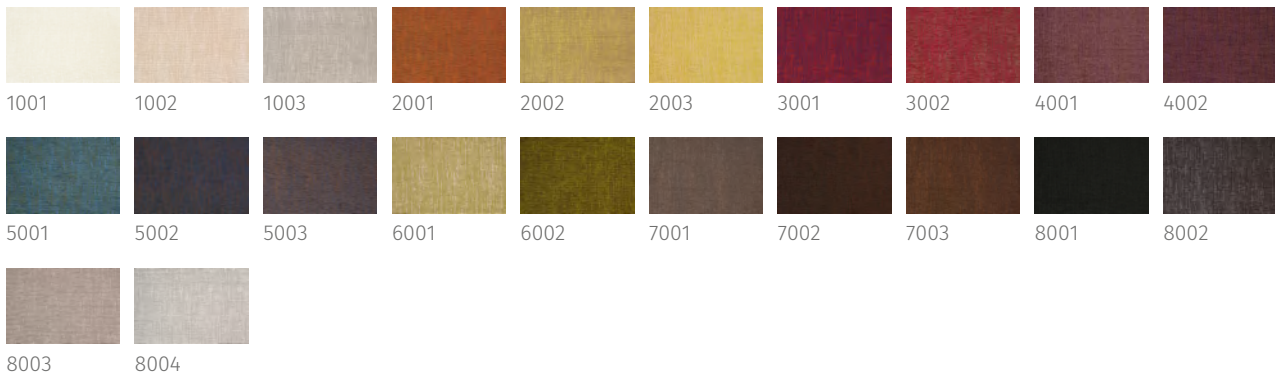







Width	320 cm
Weight	67 g/m ²
Composition	100% Polyester Trevira CS
Flame resistance	DIN 4102/B1, BS 5867 TYP C, IMO Res. A471 (XII), EN 13773
Light fastness	4-5
Wash fastness 40°C DIN EN ISO 105 C10	note 4-5
Wash fastness 60°C DIN EN ISO 105 C10	note 4-5
Fabric relaxing washing 30°C DIN EN ISO 6330 DIN EN ISO 5077	warp approx. +/-1%, weft approx. +/-1 %
Care	    
Other	Supplied with lead possible with a surcharge.

The above technical data are average values. These values only describe the technical characteristics and the chemical composition of the delivered goods. Warranties are not given.

Spectra

Article Number 29501

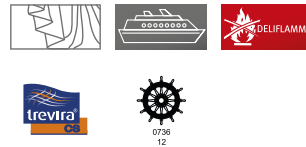


Width	140 cm
Weight	325 g/m ²
Repeat	no repeat
Composition	100% Polyester FR
Flame resistance	DIN 4102/B1, DIN EN 1021 Teil 1, DIN EN 1021 Teil 2, BS 5852 Crib 5, EN 13773 , TRANSLATE EN: Schwerentflammbarkeit hängt von verwendetem Schaum ab.
Light fastness	4-5
Wash fastness 40°C DIN EN ISO 105 C10	note 4-5
Fabric relaxing washing 30°C DIN EN ISO 6330 DIN EN ISO 5077	warp approx. +/-1%, weft approx. +/-1 %
Fabric relaxing dry clean DIN EN ISO 3175-1	warp approx. +/-1%, weft approx. +/-1 %
Rub fastness DIN EN ISO 105-X12	dry: note 4-5, wet: note 4-5
Abrasion to Martindale DIN EN ISO 12947-2 DIN EN 14465-2006	40000
Pilling DIN EN ISO 12945-2	note 4-5 at 2000 rubs
Care	    



The above technical data are average values. These values only describe the technical characteristics and the chemical composition of the delivered goods. Warranties are not given.

Tamino DELILIGHT

Article Number 36256



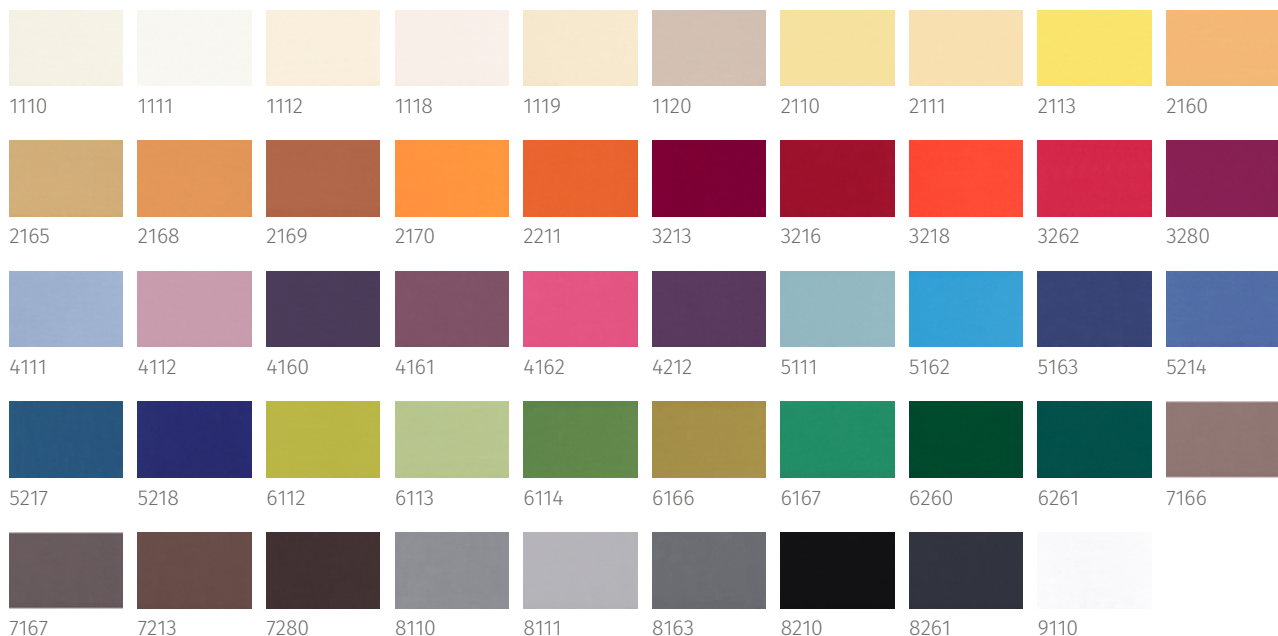
1001 1002

Width	300 cm
Weight	80 g/m ²
Repeat	length approx. - cm, width approx. 38 cm
Composition	100% Polyester Trevira CS
Flame resistance	DIN 4102/B1, M1, BS 5867 TYP C, IMO Res. A471 (XII), ,
Light fastness	7
Wash fastness 40°C DIN EN ISO 105 C10	note 5
Wash fastness 60°C DIN EN ISO 105 C10	note 5
Fabric relaxing washing 40°C DIN EN ISO 6330 DIN EN ISO 5077	warp approx. +/- 1%, weft approx. +/- 1 %
Fabric relaxing washing 60°C DIN EN ISO 6330 DIN EN ISO 5077	warp approx. +/- 1%, weft approx. +/- 1 %
Fabric relaxing dry clean DIN EN ISO 3175-1	warp approx. +/-1%, weft approx. +/-1 %
Rub fastness DIN EN ISO 105-X12	dry: note 4-5, wet: note 4-5
Care	
Care Health & Care	
Other	Supplied with lead possible with a surcharge.

The above technical data are average values. These values only describe the technical characteristics and the chemical composition of the delivered goods. Warranties are not given.

Target

Article Number 24188



Width	150 cm
Weight	106 g/m ²
Repeat	no repeat
Composition	100% Polyester FR
Flame resistance	DIN 4102/B1, M1, BS 5867 TYP B, IMO Res. A471 (XII), EN 13773 C1 ,
Light fastness	5
Wash fastness 40°C DIN EN ISO 105 C10	note 4-5
Wash fastness 60°C DIN EN ISO 105 C10	note 4-5
Fabric relaxing washing 40°C DIN EN ISO 6330 DIN EN ISO 5077	warp approx. +/-1%, weft approx. +/-1 %
Fabric relaxing washing 60°C DIN EN ISO 6330 DIN EN ISO 5077	warp approx. +/-1%, weft approx. +/-1 %

Fabric relaxing dry clean DIN EN ISO 3175-1 warp approx. +/-1%, weft approx. +/-1 %

Care



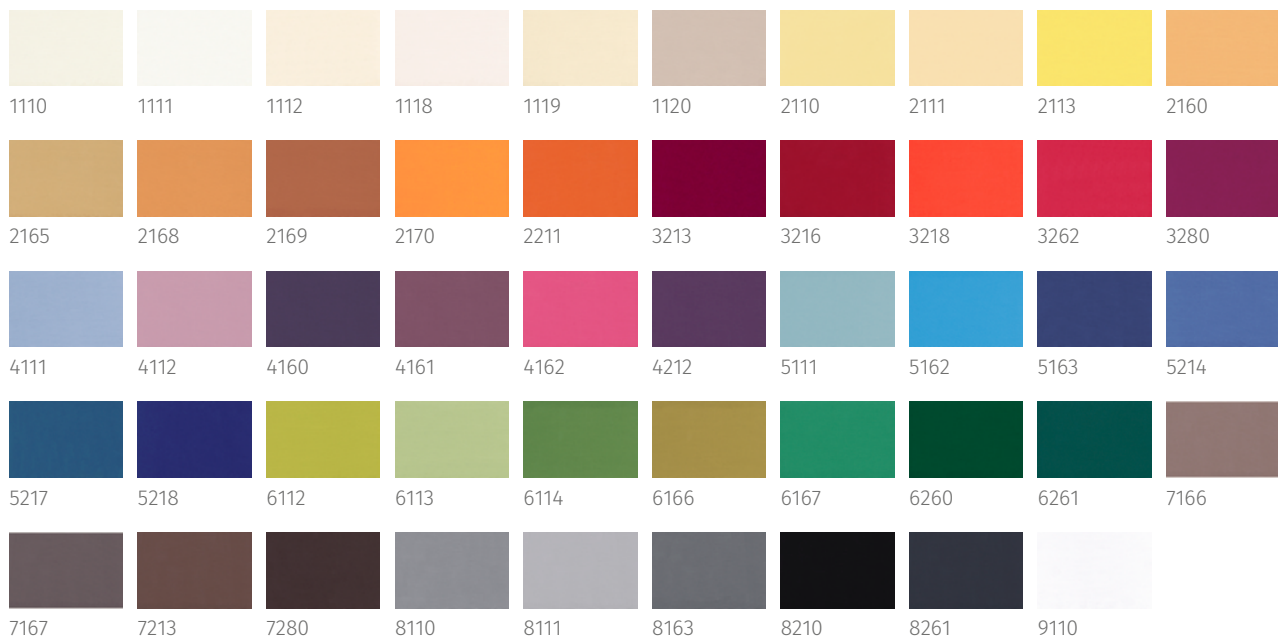
Care Health & Care



The above technical data are average values. These values only describe the technical characteristics and the chemical composition of the delivered goods. Warranties are not given.

Target 300

Article Number 48404



Width	300 cm
Weight	106 g/m ²
Repeat	no repeat
Composition	100% Polyester FR
Flame resistance	DIN 4102/B1, M1, BS 5867 TYP B, IMO Res. A471 (XII), EN 13773 C1,
Light fastness	5
Wash fastness 40°C DIN EN ISO 105 C10	note 4-5
Fabric relaxing washing 40°C DIN EN ISO 6330 DIN EN ISO 5077	warp approx. +/-1%, weft approx. +/-1 %
Fabric relaxing dry clean DIN EN ISO 3175-1	warp approx. +/-1%, weft approx. +/-1 %
Care	

Care Health & Care





The above technical data are average values. These values only describe the technical characteristics and the chemical composition of the delivered goods. Warranties are not given.

Toni DIMOUT

Article Number 37339



1520 3520 5520 6520 8520






Width	140 cm
Weight	260 g/m ²
Repeat	length approx. 7,5 cm, width approx. 11,5 cm
Composition	100% Polyester FR
Darkening factor	approx. 99 %
Flame resistance	DIN 4102/B1, M1, BS 5867 TYP-B + TYP-C, IMO Res. A471 (XII), EN 13773 ,
Light fastness	4-5
Wash fastness 40°C DIN EN ISO 105 C10	note 4-5
Wash fastness 60°C DIN EN ISO 105 C10	note 4-5
Fabric relaxing washing 40°C DIN EN ISO 6330 DIN EN ISO 5077	warp approx. +/-1%, weft approx. +/-1 %
Fabric relaxing washing 60°C DIN EN ISO 6330 DIN EN ISO 5077	warp approx. +/-2%, weft approx. +/-1 %
Fabric relaxing dry clean DIN EN ISO 3175-1	warp approx. +/-1%, weft approx. +/-1_ %
Rub fastness DIN EN ISO 105-X12	dry: note 4-5, wet: note 4-5
Measured sound absorption coefficient DIN EN ISO 354/DIN EN ISO 11654	0.65
Sound absorption class	C
Care	
Care Health & Care	

The above technical data are average values. These values only describe the technical characteristics and the chemical composition of the delivered goods. Warranties are not given.

Topas

Article Number 36529





Width	145 cm
Weight	225 g/m ²
Repeat	length approx. 21 cm, width approx. 7 cm
Composition	100% Polyester Trevira CS
Flame resistance	DIN 4102/B1, M1, BS 5867 TYP C, IMO Res. A471 (XII), EN 13773 ,
Light fastness	4-5
Wash fastness 40°C DIN EN ISO 105 C10	note 4-5
Fabric relaxing washing 40°C DIN EN ISO 6330 DIN EN ISO 5077	warp approx. +/- 1%, weft approx. +/- 1 %
Fabric relaxing dry clean DIN EN ISO 3175-1	warp approx. +/-1%, weft approx. +/-1 %
Rub fastness DIN EN ISO 105-X12	dry: note 4-5, wet: note 4-5
Care	    

The above technical data are average values. These values only describe the technical characteristics and the chemical composition of the delivered goods. Warranties are not given.

Tria DELILIGHT

Article Number 33986




Width	300 cm
Weight	90 g/m ²
Repeat	length approx. - cm, width approx. 55,5 cm
Composition	100% Polyester Trevira CS
Flame resistance	DIN 4102/B1, M1, BS 5867 TYP C, IMO Res. A471 (XII), EN 13773 C1 ,
Light fastness	5-6
Wash fastness 40°C DIN EN ISO 105 C10	note 4-5
Wash fastness 60°C DIN EN ISO 105 C10	note 4-5
Fabric relaxing washing 40°C DIN EN ISO 6330 DIN EN ISO 5077	warp approx. +/-1%, weft approx. +/-1 %
Fabric relaxing washing 60°C DIN EN ISO 6330 DIN EN ISO 5077	warp approx. +/-1%, weft approx. +/-1 %
Fabric relaxing dry clean DIN EN ISO 3175-1	warp approx. +/- 1%, weft approx. +/- 1 %
Rub fastness DIN EN ISO 105-X12	dry: note 4-5, wet: note 4-5
Care	
Care Health & Care	
Other	Supplied with lead possible with a surcharge.

The above technical data are average values. These values only describe the technical characteristics and the chemical composition of the delivered goods. Warranties are not given.

Tuja DELILIGHT

Article Number 38320



Width	300 cm
Weight	25 g/m ²
Repeat	no repeat
Composition	100% Polyester Trevira CS
Flame resistance	DIN 4102/B1, M1, BS 5867 TYP C, IMO Res. A471 (XII), EN 13773 ,
Light fastness	5-6
Wash fastness 40°C DIN EN ISO 105 C10	note 5
Fabric relaxing washing 30°C DIN EN ISO 6330 DIN EN ISO 5077	warp approx. +/-1%, weft approx. +/-1 %
Fabric relaxing dry clean DIN EN ISO 3175-1	warp approx. +/-1%, weft approx. +/-1 %
Care	
Other	Supplied with lead possible with a surcharge.











The above technical data are average values. These values only describe the technical characteristics and the chemical composition of the delivered goods. Warranties are not given.

Twigs Desiree-Chintz DELILIGHT

Article Number 27889



1520

Width	140 cm
Weight	71 g/m ²
Repeat	length approx. 300 cm, width approx. 138 cm
Composition	100% Polyester Trevira CS
Flame resistance	DIN 4102/B1, M1, BS 5867 TYP C, IMO Res. A471 (XII), EN 13773 ,
Light fastness	5-6
Wash fastness 40°C DIN EN ISO 105 C10	note 4-5
Wash fastness 60°C DIN EN ISO 105 C10	note 4-5
Fabric relaxing washing 40°C DIN EN ISO 6330 DIN EN ISO 5077	warp approx. +/-1%, weft approx. +/-1 %
Fabric relaxing washing 60°C DIN EN ISO 6330 DIN EN ISO 5077	warp approx. +/- 1%, weft approx. +/- 1 %
Fabric relaxing dry clean DIN EN ISO 3175-1	warp approx. +/-1%, weft approx. +/-1 %
Rub fastness DIN EN ISO 105-X12	dry: note 4-5, wet: note 4-5
Care	    
Care Health & Care	    
Other	Supplied with lead possible with a surcharge.






The above technical data are average values. These values only describe the technical characteristics and the chemical composition of the delivered goods. Warranties are not given.

Twigs Opus

Article Number 27867



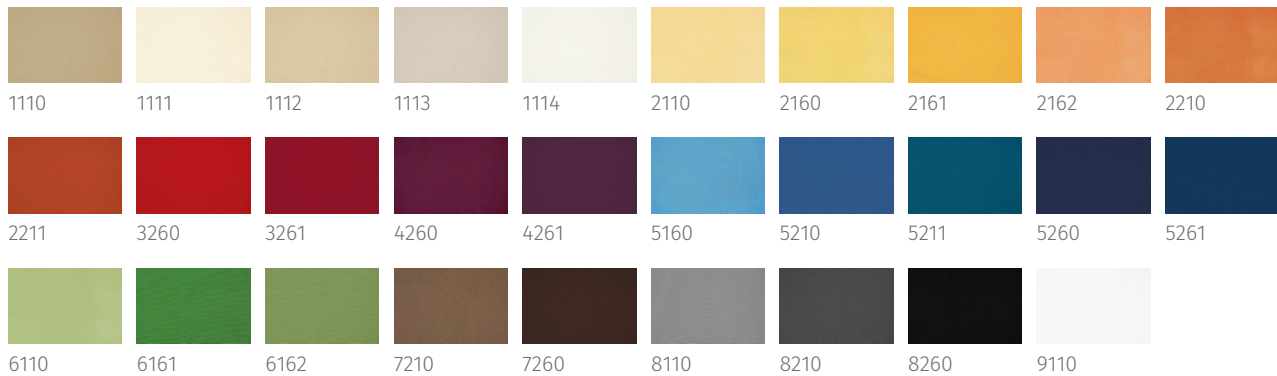
1521


Width	140 cm
Weight	220 g/m ²
Repeat	length approx. 300 cm, width approx. 138 cm
Composition	100% Polyester FR
Flame resistance	DIN 4102/B1, M1, BS 5867 TYP-B + TYP-C, IMO Res. A471 (XII), EN 13773 ,
Light fastness	4-5
Wash fastness 40°C DIN EN ISO 105 C10	note 4-5
Fabric relaxing washing 40°C DIN EN ISO 6330 DIN EN ISO 5077	warp approx. +/-1%, weft approx. +/-1 %
Fabric relaxing dry clean DIN EN ISO 3175-1	warp approx. +/-1%, weft approx. +/-1 %
Rub fastness DIN EN ISO 105-X12	dry: note 4, wet: note 4-5
Care	    

The above technical data are average values. These values only describe the technical characteristics and the chemical composition of the delivered goods. Warranties are not given.

Universo

Article Number 38058

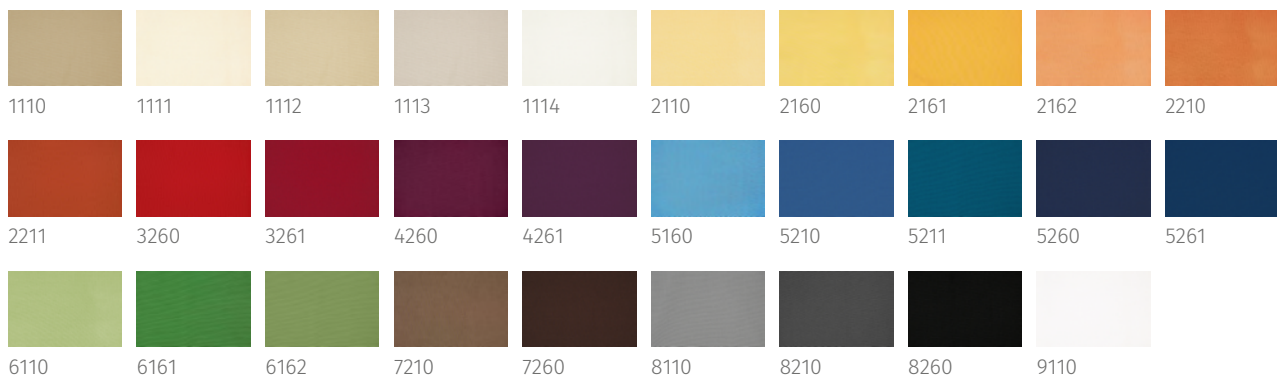




Width	150 cm
Weight	170 g/m ²
Repeat	no repeat
Composition	100% Polyester FR
Flame resistance	DIN 4102/B1, M1, BS 5867 TYP C, IMO Res. A471 (XII), C1,
Light fastness	4-5
Wash fastness 40°C DIN EN ISO 105 C10	note 4-5
Wash fastness 60°C DIN EN ISO 105 C10	note 4-5
Fabric relaxing washing 30°C DIN EN ISO 6330 DIN EN ISO 5077	warp approx. +/-1%, weft approx. +/-1 %
Fabric relaxing washing 60°C DIN EN ISO 6330 DIN EN ISO 5077	warp approx. +/-1%, weft approx. +/-1 %
Fabric relaxing dry clean DIN EN ISO 3175-1	warp approx. +/-1%, weft approx. +/-1 %
Care	
Care Health & Care	

The above technical data are average values. These values only describe the technical characteristics and the chemical composition of the delivered goods. Warranties are not given.

Universo 300

Article Number 23899



Width	300 cm
Weight	170 g/m ²
Repeat	no repeat
Composition	100% Polyester FR
Flame resistance	DIN 4102/B1, M1, BS 5867 TYP B, IMO Res. A471 (XII), C1 ,
Light fastness	4-5
Wash fastness 40°C DIN EN ISO 105 C10	note 4-5
Wash fastness 60°C DIN EN ISO 105 C10	note 4-5
Fabric relaxing washing 40°C DIN EN ISO 6330 DIN EN ISO 5077	warp approx. +/-1%, weft approx. +/-1 %
Fabric relaxing washing 60°C DIN EN ISO 6330 DIN EN ISO 5077	warp approx. +/-1%, weft approx. +/-1 %
Fabric relaxing dry clean DIN EN ISO 3175-1	warp approx. +/-1%, weft approx. +/-1 %
Care	
Care Health & Care	

The above technical data are average values. These values only describe the technical characteristics and the chemical composition of the delivered goods. Warranties are not given.

Viola






Article Number 48710



1550 1551 1552 2550 3550 3551 4550 4551 5550 5551



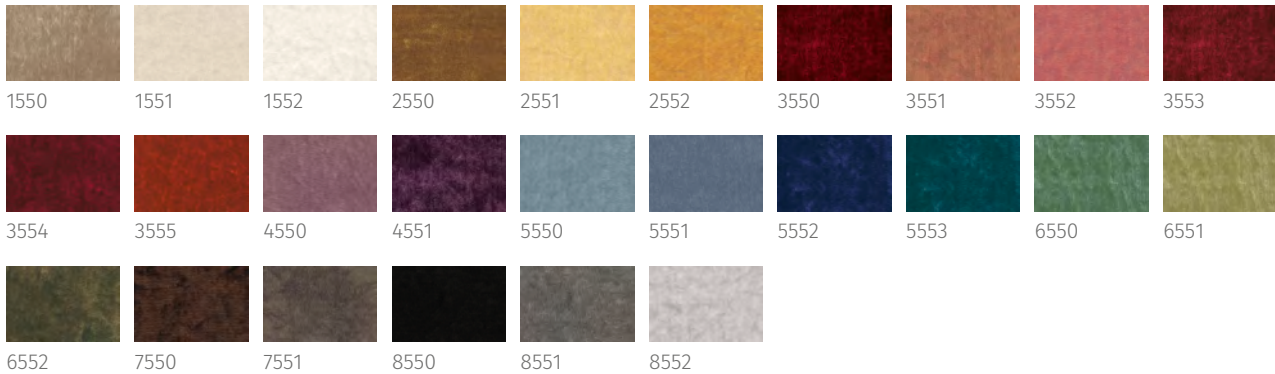
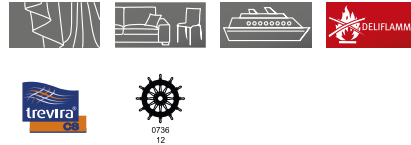
6550 7550 8550 8551 8552


Width	140 cm
Weight	400 g/m ²
Repeat	length approx. 35 cm, width approx. 17,5 cm
Composition	100% Polyester Trevira CS
Flame resistance	DIN 4102/B1, DIN EN 1021 Teil 1, DIN EN 1021 Teil 2, M1, BS 5867 TYP C, BS 5852 Crib 5, IMO Res. A471 (XII), IMO Res. A652 (16), 1-M, EN 13773 , TRANSLATE EN: Schwerentflammbarkeit hängt von verwendetem Schaum ab.
Light fastness	4-5
Wash fastness 40°C DIN EN ISO 105 C10	note 4-5
Fabric relaxing washing 40°C DIN EN ISO 6330 DIN EN ISO 5077	warp approx. +/-1%, weft approx. +/-1 %
Fabric relaxing dry clean DIN EN ISO 3175-1	warp approx. +/-1%, weft approx. +/-1 %
Rub fastness DIN EN ISO 105-X12	dry: note 4-5, wet: note 4-5
Abrasion to Martindale DIN EN ISO 12947-2 DIN EN 14465-2006	40000
Pilling DIN EN ISO 12945-2	note 4-5 at 2000 rubs
Care	    

The above technical data are average values. These values only describe the technical characteristics and the chemical composition of the delivered goods. Warranties are not given.

Voltaire

Article Number 28804



Width	140 cm
Weight	360 g/m ²
Repeat	no repeat
Composition	100% Polyester Trevira CS
Flame resistance	DIN 4102/B1, DIN EN 1021 Teil 1, DIN EN 1021 Teil 2, M1, BS 5867 TYP C, BS 5852 Crib 5, IMO Res. A471 (XII), IMO Res. A652 (16), EN 13773 C1, TRANSLATE EN: Schwerentflammbarkeit hängt von verwendetem Schaum ab.
Light fastness	5-6
Wash fastness 40°C DIN EN ISO 105 C10	note 4-5
Fabric relaxing washing 40°C DIN EN ISO 6330 DIN EN ISO 5077	warp approx. +/-1%, weft approx. +/-1 %
Fabric relaxing dry clean DIN EN ISO 3175-1	warp approx. +/-1%, weft approx. +/-1 %
Rub fastness DIN EN ISO 105-X12	dry: note 4-5, wet: note 4-5
Abrasion to Martindale DIN EN ISO 12947-2 DIN EN 14465-2006	40000
Pilling DIN EN ISO 12945-2	note 5 at 2000 rubs
Care	

The above technical data are average values. These values only describe the technical characteristics and the chemical composition of the delivered goods. Warranties are not given.

Watson

Article Number 34942



Width	150 cm
Weight	360 g/m ²
Repeat	no repeat
Composition	100% Wolle
Flame resistance	DIN 4102/B2, DIN EN 1021 Teil 1, DIN EN 1021 Teil 2, BS 5867 TYP B, BS 5852 Crib 5, IMO Res. A471 (XII), IMO Res. A652 (16), 1-M, M2, TRANSLATE EN: Schwerentflammbarkeit hängt von verwendetem Schaum ab.
Light fastness	5-6
Wash fastness 40°C DIN EN ISO 105 C10	note 4-5
Fabric relaxing washing 30°C DIN EN ISO 6330 DIN EN ISO 5077	warp approx. +/-3%, weft approx. +/-2 %
Fabric relaxing dry clean DIN EN ISO 3175-1	warp approx. +/-1%, weft approx. +/-1 %
Rub fastness DIN EN ISO 105-X12	dry: note 4-5, wet: note 3-4
Abrasion to Martindale DIN EN ISO 12947-2	25000

DIN EN 14465-2006

Pilling DIN EN ISO 12945-2

note 3-4 at 2000 rubs

Measured sound absorption coefficient

0.9

DIN EN ISO 354/DIN EN ISO 11654

Sound absorption class

A

Care




The above technical data are average values. These values only describe the technical characteristics and the chemical composition of the delivered goods. Warranties are not given.

Zelda

Article Number 29636



Width	140 cm
Weight	250 g/m ²
Repeat	length approx. 9 cm, width approx. 2 cm
Composition	100% Polyester FR
Flame resistance	DIN 4102/B1, M1, BS 5867 TYP B, IMO Res. A471 (XII), EN 13773 ,
Light fastness	4-5
Wash fastness 40°C DIN EN ISO 105 C10	note 4-5
Fabric relaxing washing 40°C DIN EN ISO 6330 DIN EN ISO 5077	warp approx. +/-1%, weft approx. +/-1 %
Fabric relaxing dry clean DIN EN ISO 3175-1	warp approx. +/-1%, weft approx. +/-1 %
Rub fastness DIN EN ISO 105-X12	dry: note 4-5, wet: note 4-5
Care	

The above technical data are average values. These values only describe the technical characteristics and the chemical composition of the delivered goods. Warranties are not given.