



BLOCKOUT

MARBLE, REVERIE & ROMANY

DESIGNER PVC'S | ROLLER AND VERTICAL BLINDS

Three robust, flame retardant PVC ranges that are blackout and moisture resistant.

Each range features their own unique design and are treated with Ultra-Fresh*.

Composition: 72% PVC and 28% glass fibre

Fabric width: 1.75m (69") - 1.83m (72")

Louvre width: 89mm (3½") - 127mm (5")

Weight: 423g/m² (12.5oz/yd²) - 435g/m² (12.8oz/yd²)



LOUVOLITE

MARBLE

SOLAR, OPTICAL AND COLOUR FASTNESS PROPERTIES

	SOLAR			OPTICAL			UV block	SC	CF	DIM out	G VALUE				G TOT
	T _s	R _s	A _s	T _o	R _o	A _o					SG	DG	TG	DG LE	
Silver	0	80	20	0	91	9	100	0.23	5	5	0.24	0.29	0.31	0.31	0.05

REVERIE

SOLAR, OPTICAL AND COLOUR FASTNESS PROPERTIES

	SOLAR			OPTICAL			UV block	SC	CF	DIM out	G VALUE				G TOT
	T _s	R _s	A _s	T _o	R _o	A _o					SG	DG	TG	DG LE	
Basalt	0	82	18	0	94	6	100	0.21	5+	5	0.23	0.28	0.30	0.30	0.04

ROMANY

SOLAR, OPTICAL AND COLOUR FASTNESS PROPERTIES

	SOLAR			OPTICAL			UV block	SC	CF	DIM out	G VALUE				G TOT
	T _s	R _s	A _s	T _o	R _o	A _o					SG	DG	TG	DG LE	
Cream	0	61	39	0	68	32	100	0.41	6	5	0.36	0.38	0.36	0.37	0.10
Light Grey	0	61	39	0	69	31	100	0.41	5	5	0.36	0.38	0.36	0.37	0.10
Putty	0	46	54	0	49	51	100	0.56	6	5	0.44	0.46	0.40	0.42	0.14
White	0	69	31	0	77	23	100	0.33	6	5	0.31	0.34	0.34	0.34	0.08

T: % Transmittance
R: % Reflectance
A: % Absorption

UV Block: the % of UV light blocked by the fabric
SC: Shading Co-efficient
CF: Colour Fastness

Dim out:
1 = High light penetration
4 = Low light penetration
5 = Blockout

G Value: amount of heat transmitted through the glazing
SG: Single Glazed

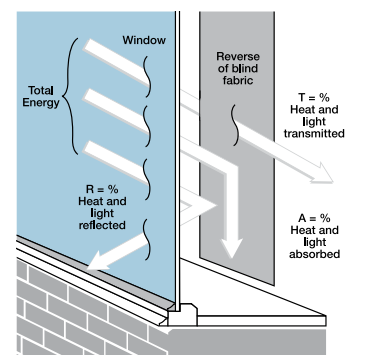
DG: Double Glazed
TG: Triple Glazed
DG LE: Double Glazed Low Emissivity.

GTOT: The amount of heat transmitted through the combination of glass and solar shading.

SOLAR GAIN: The amount of heat increase resulting from solar energy entering a room. It is the total of three separate parts - the amount of energy transmitted directly into the room, the energy which is absorbed by the blind and the proportion of energy which is absorbed by the window.

SHADING CO-EFFICIENT: The solar heat gain with the blind at the window divided by the solar heat gain with no blind at the window. The lower the shading co-efficient, therefore, the higher the efficiency of the fabric. The test results in the table above have been achieved using a single 6mm glass glazing system.

G TOT: When the G-value (a measure of total solar energy that passes through the glazing system and the blind fabric) is combined with the value of the shading.



Your Louvolite® Performance Fabrics Distributor:



Manufactured in the UK

CI/SfB 1976 reference by SfB Agency

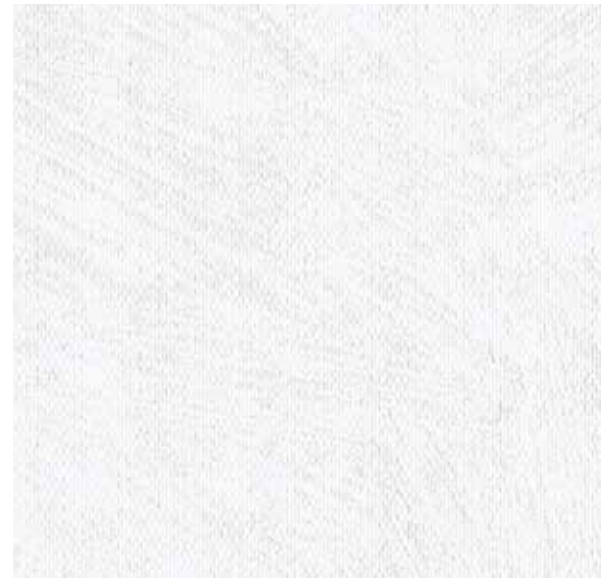
(76.7)	X
--------	---



Marble Silver



Reverie Basalt



Romany White



Romany Cream



Romany Putty



Romany Light Grey

MARBLE

Fabric Composition

72% pvc 28% glass fibre

Fabric Width

1.83m (72")

Vertical Louvre Width

89mm (3½")
Other widths available on request

Fabric Weight

432g/m² (12.7oz/yd²)

Flammability Standards

Marble meets FR standard
BS 5867 Part 2 Type B.
Further information is available
on request.

Colour Fastness

Tested in accordance with
BS EN ISO 105-B01:1999

Cleaning

Marble fabrics are no clean.
See manufacturers instructions.
Tested in accordance with
BS EN 26330:1994 method 7a.

Ultra-Fresh*

A fabric treated with Ultra-Fresh*
protects against the growth of
odour causing bacteria and fungi,
preserving fabric freshness.

*Ultra-fresh is a registered trademark of
Thomson Research Associates, Canada.

Properties



100%



Roller Vertical



Moisture resistant



REVERIE

Fabric Composition

72% pvc 28% glass fibre

Fabric Width

1.83m (72")

Vertical Louvre Width

89mm (3½")
Other widths available on request

Fabric Weight

423g/m² (12.5oz/yd²)

Flammability Standards

Reverie meets FR standard
BS 5867 Part 2 Type B.
Further information is available
on request.

Colour Fastness

Tested in accordance with
BS EN ISO 105-B01:1999

Cleaning

Reverie fabrics are no clean.
See manufacturers instructions.
Tested in accordance with
BS EN 26330:1994 method 7a.

Ultra-Fresh*

A fabric treated with Ultra-Fresh*
protects against the growth of
odour causing bacteria and fungi,
preserving fabric freshness.

*Ultra-fresh is a registered trademark of
Thomson Research Associates, Canada.

Properties



100%



Roller Vertical



Moisture resistant



ROMANY

Fabric Composition

72% pvc 28% glass fibre

Fabric Width

1.75m (69")

Vertical Louvre Width

89mm (3½") or 127mm (5")
Other widths available on request

Fabric Weight

460g/m² (13.6oz/yd²)

Flammability Standards

Romany meets FR standard
BS 5867 Part 2 Type B.
Further information is available
on request.

Colour Fastness

Tested in accordance with
BS EN ISO 105-B01:1999

Cleaning

Romany fabrics can be wiped
clean. See manufacturers
instructions. Tested in accordance
with BS EN 26330:1994 method 7a.

Ultra-Fresh*

A fabric treated with Ultra-Fresh*
protects against the growth of
odour causing bacteria and fungi,
preserving fabric freshness.

*Ultra-fresh is a registered trademark of
Thomson Research Associates, Canada.

Properties



100%



Roller Vertical



Moisture resistant

