

THE
GALLERIE
COLLECTION



Edmund
Bell





GALLERIE

Capturing the very latest in watercolour effect designs, GALLERIE conjures up a playful vision of freshness, spontaneity and heady summer days.

Inspired by the hand painted watercolours of the French impressionists, the collection takes you on a journey to the gardens of the Riviera.

The fresh and contemporary designs are presented in a selection of colours that draw on a wealth of diverse inspiration yet blend intuitively to change the mood. Salmon & Mint, Magenta & Lime, Aqua, Seafoam and Blueberry are among the medley of colours that blend harmoniously to evoke lazy summer days.

This versatile collection can be used for curtains, chairs, bedding and accessories such as cushions, pelmets and tiebacks. Our quality base cloths; that includes inherently flame retardant satin, panama, dimout, blackout, sheers and upholstery fabrics; boast the highest levels of flame retardancy and durability, suitable for a wide variety of contract markets.





MAIN IMAGE

Curtain & Voile MURANO Blush Sofa BREEZE Blush
Scatters ATMOSPHERE Green Tea, ALBANY Blush, JARDIN Blush

BLUSH



BLUEBERRY





MAIN IMAGE

Curtains MURANO Blueberry Voile MOMENTS Mist
Chairs L to R ALBANY Blueberry, BREEZE Blueberry,
 CARNIVAL Blueberry **Scatters** ATMOSPHERE Cobalt, ALBANY Blueberry



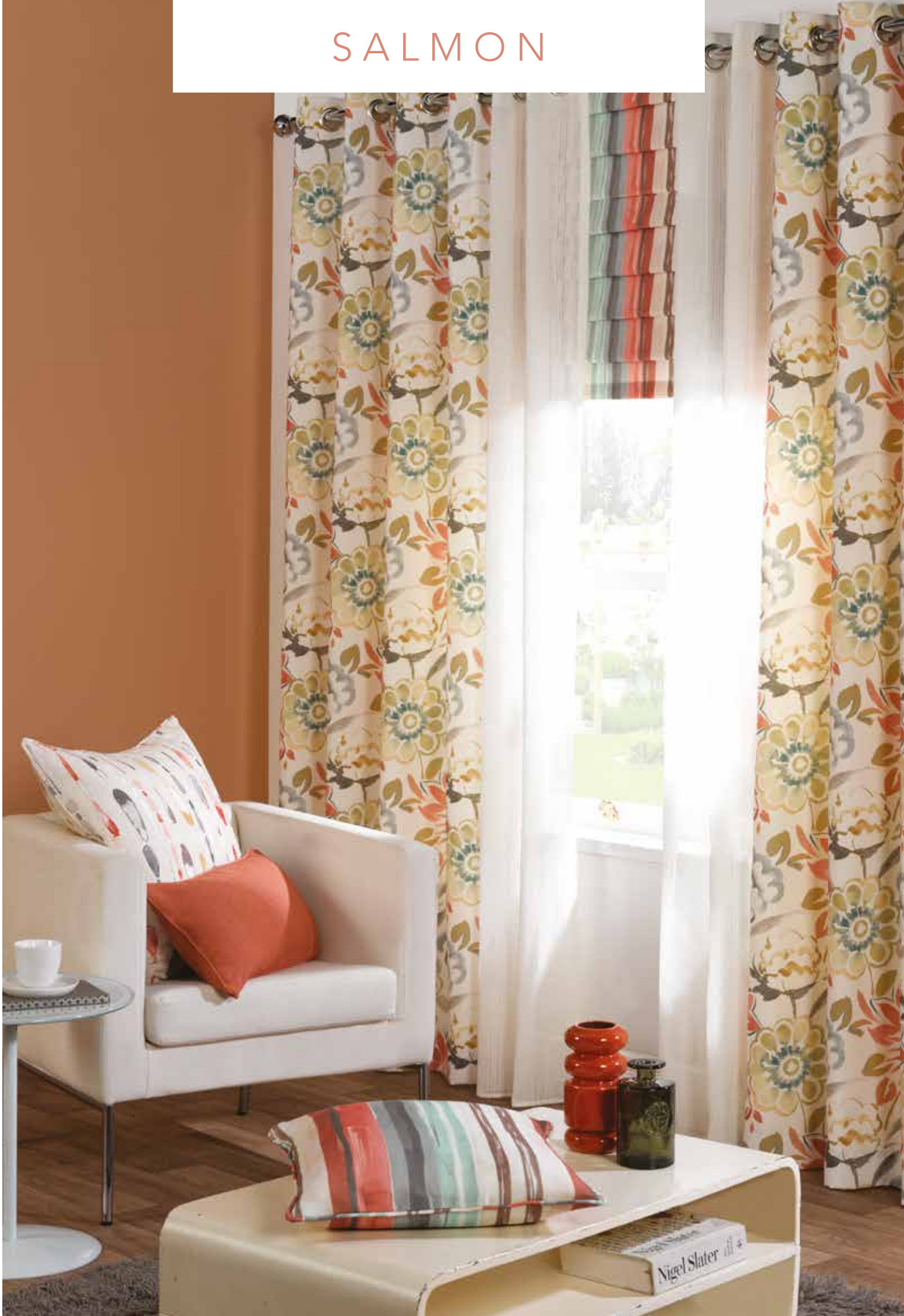


MAIN IMAGE

Curtains JARDIN Salmon **Voile** ENDLESS Champagne
Blind CARNIVAL Salmon **Scatters** MURANO Salmon,
ATMOSPHERE Melon, CARNIVAL Salmon



SALMON



LAGOON





MAIN IMAGE

Curtains MURANO Lagoon Voile ENDLESS Champagne
Scatters CARNIVAL Lagoon, ATMOSPHERE Fuchsia,
ALBANY Lagoon, JARDIN Lagoon, ODYSSEY Lime
Throw ATMOSPHERE Lagoon

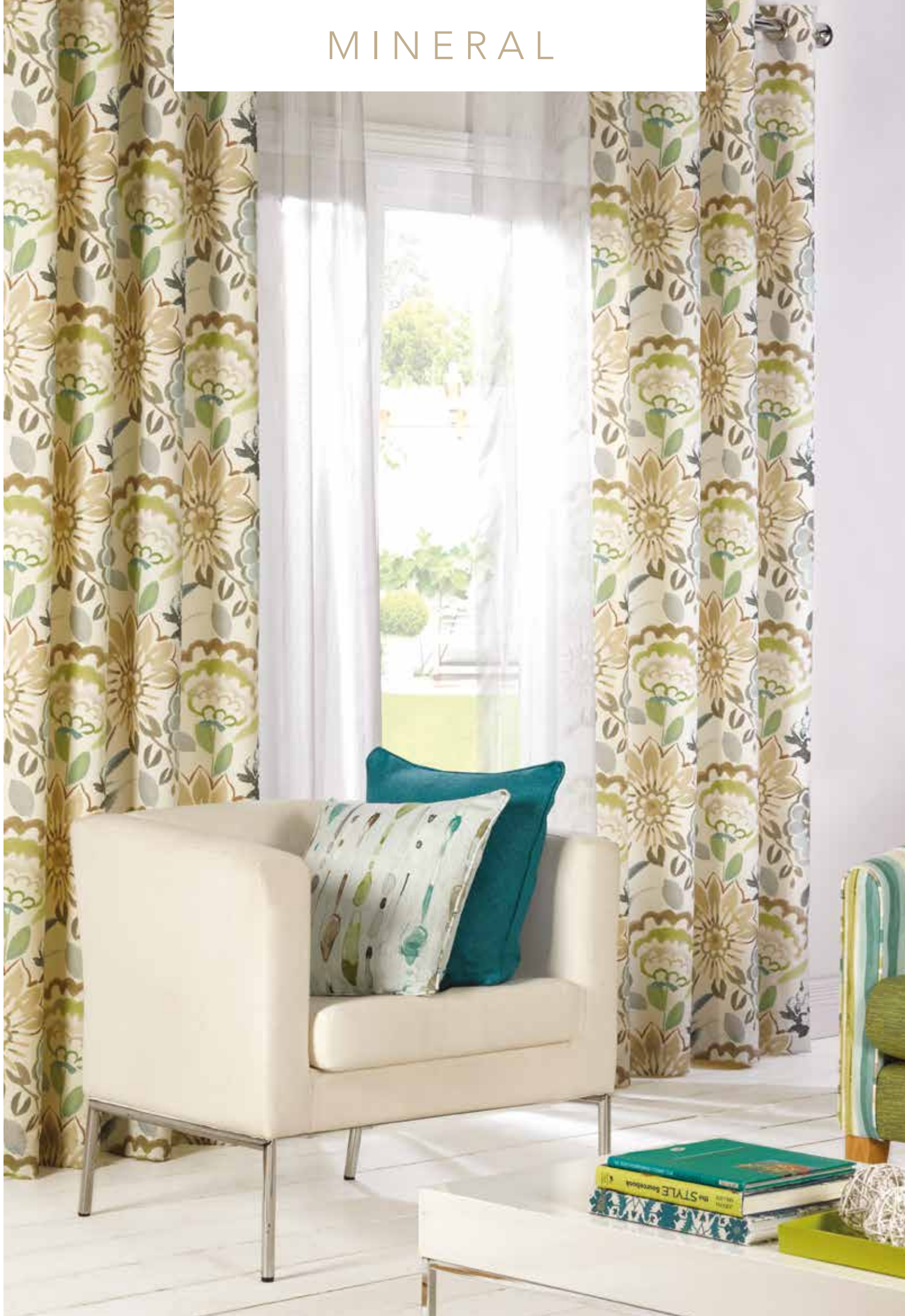


MAIN IMAGE

Curtain ALBANY Mineral Voile MOMENTS Mist
Scatters BREEZE Mineral, MURANO Mineral



MINERAL



THE GALLERIE COLLECTION

MINERAL

BLUEBERRY

LAGOON

BLUSH

SALMON

JARDIN

Pattern repeat
H68.5cm x V64cm

This design
also repeats at
34.25cm half drop
across the width



MURANO

Pattern repeat
H68.5cm x V68.5cm



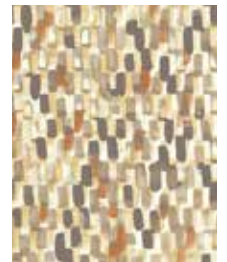
BREEZE

Pattern repeat
H12cm x V16cm



ALBANY

Pattern repeat
H34.25cm x V34.25cm



CARNIVAL

Pattern repeat
H34.25cm x V32cm



For use as a guide only. Whilst the colours in this brochure have been reproduced as accurately as possible, we are restricted by the limitations of 4 colour litho printing and there may be slight differences when printed on fabric.

Product code	Product information	Suggested end use	Flame retardant specification	Care instructions
6910	Inherently Flame Retardant Panama Polyester 150cm 240gms +/- 5%	Curtaining	BS 5867 Part 2 Type B & C, IMO FTP Code 2010 Part 7, B1	 Washable at 71°C for thermal disinfection
6913	Inherently Flame Retardant Satin Polyester 142cm 220gms +/- 5%	Curtaining	BS 5867 Part 2 Type B & C, BS EN 13773 2003, BS 7175 Source 0, 5 & 7 for prisons, IMO FTP Code 2010 Part 7, M1, B1	 Washable at 71°C for thermal disinfection
6994	Inherently Flame Retardant Trevira CS Polyester Nimbus Soft 140cm 230gms +/- 5%	Curtaining	BS 5867 Part 2 Type B & C, B1, M1, IMO FTP Code 2010 Part 7, BS 5815 Part 3G.	 Washable at 71°C for thermal disinfection
6934	Inherently Flame Retardant Quatro Polyester 142cm 220gms +/- 5%	Curtaining	BS 5867 Part 2 Type B & C, BS EN 13773 2003, BS 7175 Source 0, 5 & 7 for prisons, IMO FTP Code 2010 Part 7, M1, B1	 Washable at 71°C for thermal disinfection
6900	Inherently Flame Retardant Plain Weave 142cm 145gms +/- 5%	Bedding	BS 5867 Part 2 Type B & C, BS 5815 Part 3G, BS 7175 Source 0, 5 & 7 for prisons, M1, IMO FTP Code 2010 Part 7	 Washable at 71°C for thermal disinfection
6904	Inherently Flame Retardant Venus Polyester Dimout 150cm 250gms +/- 5%	Curtaining (Dimout)	BS 5867 Part 2 Type B & C, Classe Uno 9177, NFPA 701, IMO FTP Code 2010 Part 7, M1, B1, CA19	 Washable at 71°C for thermal disinfection
6911	Inherently Flame Retardant Polyester Blackout 142cm 240gms +/- 10%	Curtaining (Blackout)	BS 5867 Part 2 Type B, B1, NFPA 701, IMO FTP Code 2010 Part 7	 Iron on non-coated side
6896	Flame Retardant Blackout 25% Polyester/71% Acrylic Flock/4% Cotton 140cm 300gms +/- 5%	Curtaining (Blackout)	BS 5867 Part 2 Type B, M1, B1, IMO FTP Code 2010 Part 7	 Iron on non-coated side
9049	Flame Retardant Polyester Voile 150cm 55gms +/- 5%	Curtaining (Voile)	BS 5867 Part 2, Type B & C	 Iron on non-coated side
6978	FR Sentinel MRSA Polyester 137cm 350gms +/- 5%	Waterproof Upholstery 100,000 Martindale	BS 5852 Crib 5, IMO FTP Code 2010 Part 8	Routine Soap and warm water sponging is effective for ordinary soiling. Fresh stains, both water and oil based are easily removed using most water based household spray cleaning agents. Antiseptic cleaning agents can be used and more stubborn stains may require the use of a safe solvent such as Isopropyl Alcohol or Mineral Spirit. A half cup of household bleach for 5 litres of water can also be used as a useful disinfectant. Best cleaning method is "wipe and dry" technique, full immersion is not recommended. Do not dry clean
6914	FR Enduracare MRSA Polyester Twill 140cm 350gms +/- 5%	Waterproof Upholstery 50,000 Martindale	BS 5852 Crib 5, IMO FTP Code 2010 Part 8	Will not support microbial growth including:- Aspergillus Niger - EColi - Altinata - Salmonella - Penicillium - Staphylococcus Aureus(MRSA) - Cladosporium Herbarism AATC Test Method 147 1998 AATCC Test Method 30 1998.

Soapless detergent to be used on all of the above base cloths. No fabric conditioners/softeners or freshener sprays to be used as this can adversely affect FR properties. A tolerance of +/- 3% should be allowed for on pattern repeats as it can vary from quality to quality. Shade variations may occur batch to batch but we will endeavour to maintain good colour continuity. Please inspect all goods before cutting as no claims can be accepted or exchanges made once the material has been cut. For detailed instructions please request a specification sheet.



Edmund
Bell

Edmund Bell & Company Limited, Unit E 1 A, Kingsway Business Park,
John Boyd Dunlop Drive, Kingsway, Rochdale, OL16 4NG
Tel: + 44 (0)1706 71 70 70 Fax: + 44 (0)1706 71 70 71 sales@edmundbell.com

www.edmundbell.com