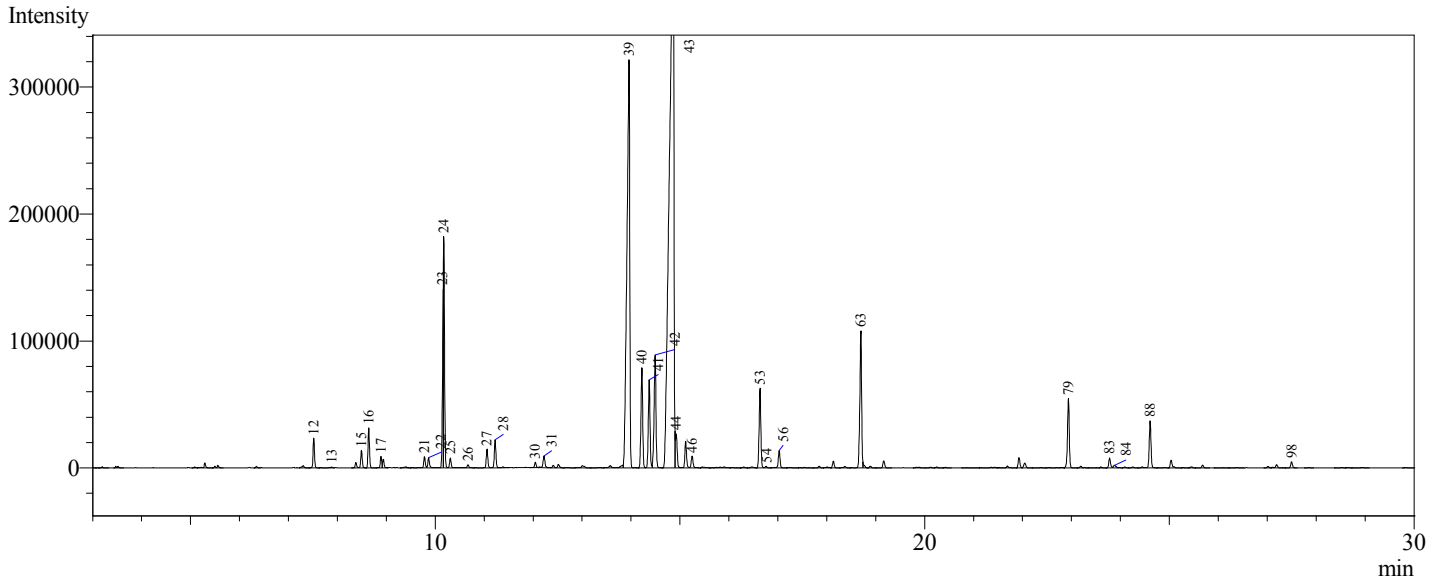


CERTIFICATE OF ANALYSIS



Sample Information
 Analysis Date & Time : 23/08/2022 17:35:35
 User Name : Admin
 Vial# : 2
 Sample Name : QAL3210 SUMMERDOWN Eng Peppermint Blend Oil B.21
 Sample ID : QAL3210

THIS SAMPLE WAS TESTED ON BEHALF OF:
 Sir Michael Colman
 T/A SUMMERDOWN FARMS LTD



Peak Table - Channel 1

Peak#	Ret. Time	Conc.	Name
12	7.517	0.689	alpha Pinene
13	7.883	0.019	Camphene
15	8.493	0.440	Sabinene
16	8.640	0.971	beta Pinene
17	8.893	0.271	beta myrcene
21	9.780	0.287	alpha Terpinene
22	9.866	0.274	para Cymene
23	10.148	2.202	1,8-Cineole
24	10.173	4.651	Limonene
25	10.308	0.253	cis Ocimene
26	10.669	0.091	trans Ocimene
27	11.058	0.489	gamma Terpinene
28	11.225	0.761	Un-Named Constituent
30	12.045	0.155	Terpinolene
31	12.222	0.397	Linalol
39	13.958	19.373	Menthone
40	14.222	2.912	Menthofuran
41	14.372	2.528	Isomenthone
42	14.492	3.599	Neomenthol
43	14.856	41.881	Menthol
44	14.921	1.079	Un-Named Constituent
46	15.248	0.378	alpha Terpineol
53	16.636	2.358	Pulegone
54	16.770	0.044	Carvone
56	17.028	0.512	Piperitone
63	18.697	4.176	Menthyl Acetate
79	22.939	2.122	beta Caryophyllene
83	23.780	0.301	beta Farnesene
84	23.878	0.125	alpha Humulene
88	24.607	1.415	Germacrene D
98	27.499	0.187	Un-Named Constituent
Total		94.939	

TESTED BY: Craig Bendon
 TEST DATE: 23 Aug 2022
 ISSUE DATE: 15 Sep 2022

CONTACT DETAILS:
 QUALITY ANALYSIS LIMITED
 16 Crittall Road, Witham, Essex,
 CM8 3DR
 +441376 511773
 craig@qal.uk.com