



# Say Goodbye to Loadshedding

## HUAWEI POWER-M

Active safety | Seamless switchover | Silent & sleek design



Supplementary power supply, uninterrupted power

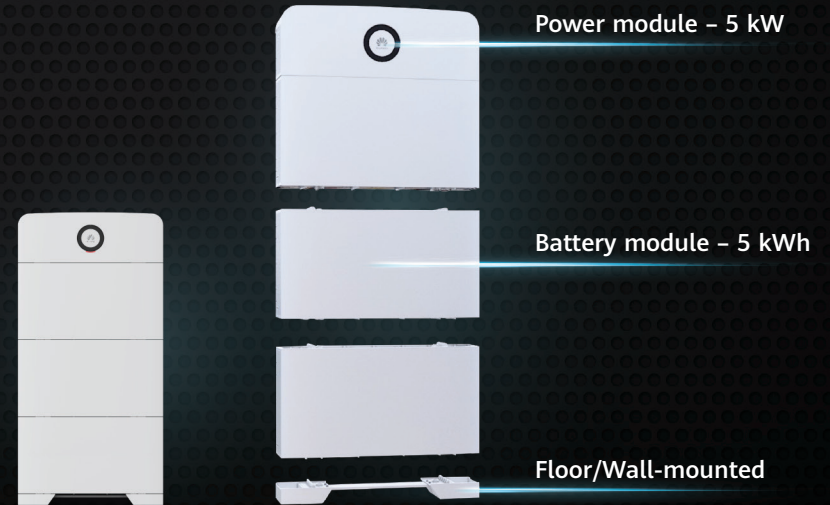
## Sleek design

- Exquisite frosted texture
- Slim as 16 cm aluminum alloy enclosure



## All-in-one and modular

- Integrated high-density design
- 5 kWh to 45 kWh batteries configured as required
- Easy capacity expansion and flexible budget



# HUAWEI POWER-M

## Lighting Up Your Home

Uninterrupted  
Power Supply

Superior/Premium  
Experience

Advanced Safety



Seamless switch over

<= 20 milliseconds switching

Silent operation

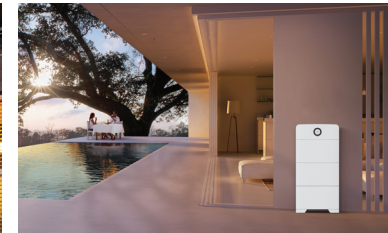
1.5 x overload capability

Fire protection included

IP66 protection level



 HUAWEI





For your villa, house or apartment



Seamless energy switchover

- <20 ms switchover
- Uninterrupted experience

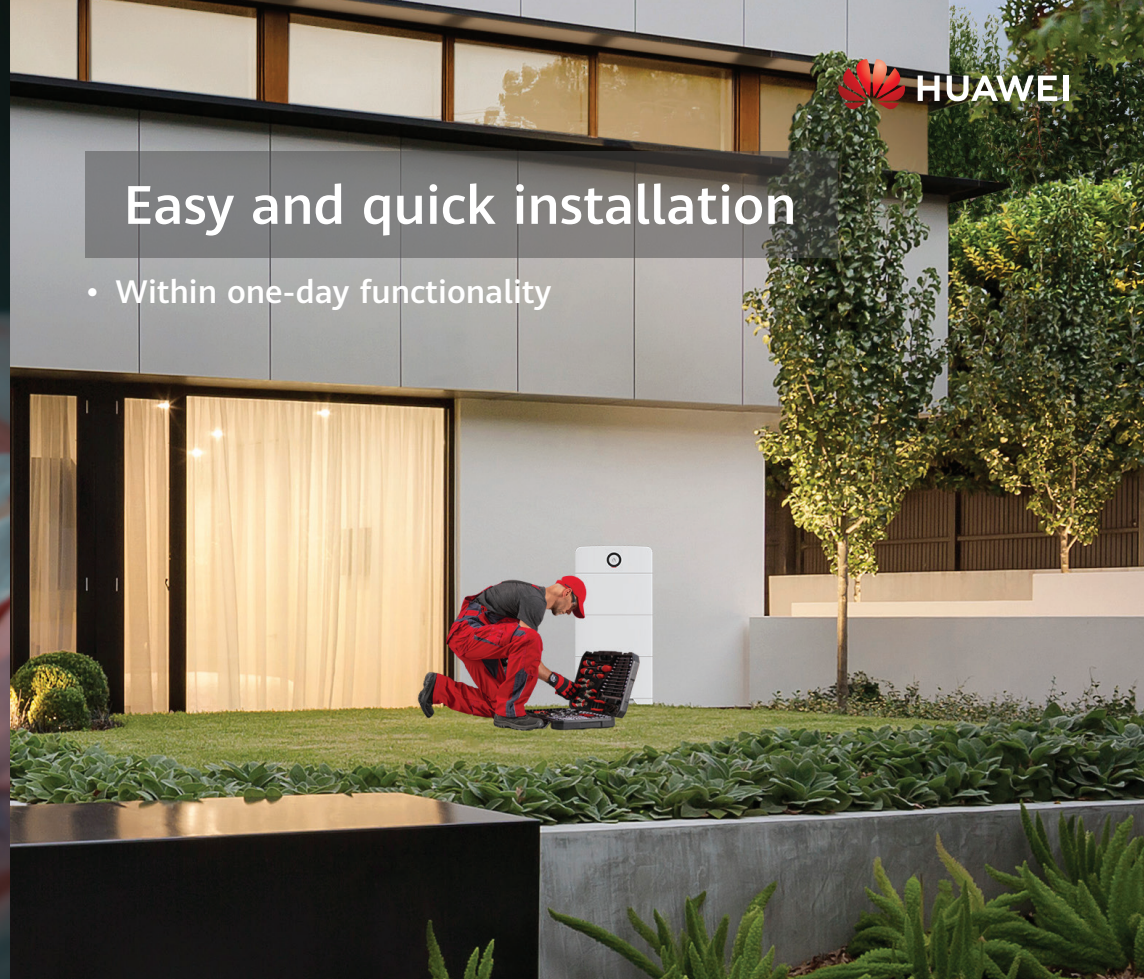
## Sleep-grade noise

- Fanless construction
- <29 dB Operating sound level

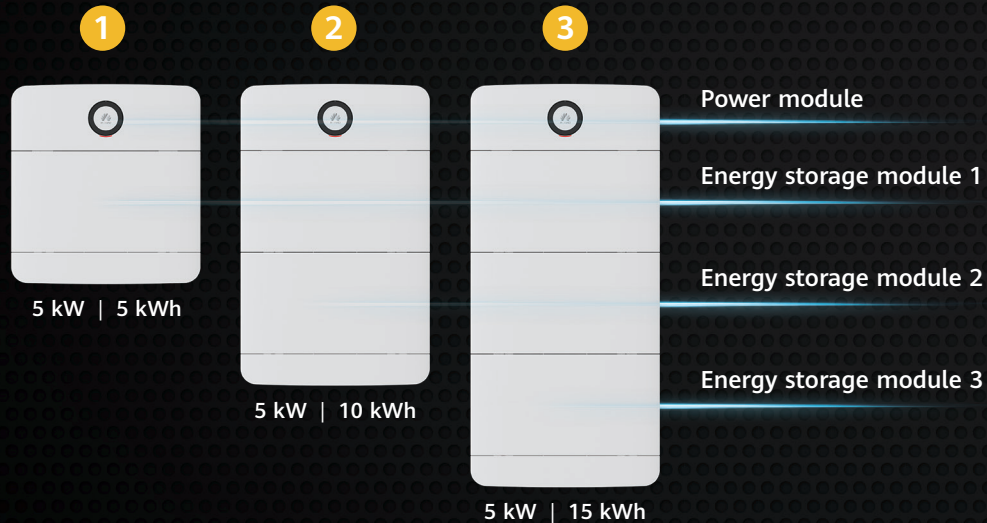


## Easy and quick installation

- Within one-day functionality



## Modular architecture, smooth expansion


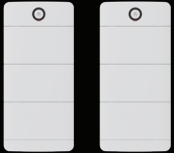




## References configuration & application scenarios

AREA	CONFIGURATION	APPLIANCES
<b>5 kW SYSTEM - BASIC</b>		
<b>&lt;70 m<sup>2</sup></b> 2.5 kW + 5 kWh		<b>Always-On application</b> <ul style="list-style-type: none"> <li>• Lights &amp; wifi</li> <li>• TV / laptop x 1</li> <li>• Fridge / freezer x 2</li> <li>• Clothes / dishwasher x 1</li> </ul>
Coverage of Stage 6		
<b>70-150 m<sup>2</sup></b> 5 kW + 10 kWh		<b>Instant application</b> (1 at a time) Coffee / Bread machine Microwave / kettle
Coverage of Stage 6		

\*Recommended configuration only for reference

# References configuration & application scenarios (continue)

AREA	CONFIGURATION	APPLIANCES
<b>10 kW SYSTEM – ADVANCED</b>		
>200 m <sup>2</sup> 10 kW + 20 kWh		<p><b>Always-On application</b></p> <ul style="list-style-type: none"> <li>• Lights &amp; wifi</li> <li>• TV &amp; laptop x 2</li> <li>• Fridge / freezer x 3</li> <li>• Geyser, stove / oven x 1</li> <li>• Aircon x 1</li> <li>• Clothes / dishwasher x 2</li> </ul> <p><b>Instant application</b> (2-3 at a time)</p> <p>Coffee / Bread machine Microwave / kettle</p>
Stage 6-8		
>400 m <sup>2</sup> 10 kW + 30 kWh		
Stage 6-8		

AREA	CONFIGURATION	APPLIANCES
<b>15 kW SYSTEM – ADVANCED</b>		
>500 m <sup>2</sup> 15 kW + 30 kWh		<p><b>Always-On application</b></p> <ul style="list-style-type: none"> <li>• Lights &amp; wifi</li> <li>• TV &amp; laptop x 3</li> <li>• Fridge / freezer x 3</li> <li>• Geyser, stove / oven x 2</li> <li>• Aircon x 3</li> <li>• Clothes / dishwasher x 2</li> <li>• Pool pump x 1</li> </ul>
Stage 8 (-4hours)		
>800 m <sup>2</sup> 15 kW + 45 kWh		
Stage 8 (4hours)		

\*Recommended configuration only for reference

# HUAWEI POWER-M

**Slim as 16 cm**

**Silent design**  
**<29 dB Operating noise**

**Portable power supply**

**24**

**Support remote operation and management**

**Natural heat dissipation**

**Safe level IP66 rated protection**

**24 Hours power supply**  
**100% Depth of Discharge**  
**Pack Level Energy Optimization**

**Energy switchover without perception <20 ms**

**Module-design, support flexible extension**

During normal operation of the equipment, the average noise level complies with the the standard within the discrepancy range.

The above results are lab test results. Due to many uncertain factors in practice, the actual results may be different from the forecast information. Therefore, the information in this document is for reference only and does not constitute any offer or commitment.

**Copyright © Huawei Technologies Co., Ltd. All rights reserved.**

No part of this document may be reproduced or transmitted in any form or by any means without prior written consent of Huawei Technologies Co., Ltd.

**Trademark Notice**

HUAWEI, HUAWEI and are trademarks or registered remarks of Huawei Technologies Co., Ltd. Other trademarks, product service and company names mentioned are the property of their respective owners.





**HUAWEI**