

# **Turntable Hi-Fi System**

Model: SY101 PRO



---

## Safety Instructions

---

Read and understand this entire manual before using this product. Keep these instructions for future reference.

1. Do not use this product near water.
2. This product should be operated only by the type of power source indicated on the marking label or in this instruction manual.
3. Do not defeat the safety purpose of the polarized plug. A polarized plug has two blades with one blade wider than the other. This plug will fit into the power outlet only one way. If you are unable to insert the plug fully into the outlet try reversing the plug. If the plug should still fail to fit, contact your electrician.
4. Protect the power cord from being walked on or pinched particularly at plugs, convenience receptacles, and the point where they exit from the product.
5. Do not overload wall outlets, extension cords, or integral convenience receptacles as this can result in a risk of fire or electric shock.
6. Never push objects of any kind into this product through openings as they may touch dangerous voltage points or short-out parts that could result in a fire or electric shock. Never spill liquid of any kind on the product.
7. Do not attempt to service this product yourself as opening or removing covers may expose you to dangerous voltage or other hazards. Refer all servicing to qualified service personnel.
8. Changes or modifications to this unit not expressly approved by the party responsible for compliance could void the user's authority to operate the equipment.
9. Do not use attachments not recommended by the product manufacturer as they may cause hazards.
10. A product and cart combination should be moved with care. Quick stops, excessive force, and uneven surfaces may cause the product and cart combination to overturn.
11. Slots and openings in the cabinet are provided for ventilation and to ensure reliable operation of the product and to protect it from overheating. Do not block or cover these openings.
12. Unplug the product during lightning storm or when unused for long periods of time.
13. This product can be used only in countries where the product is sold. Make sure that the operating voltage and the plug of AC the adapter of the product are correct for the country you live in.

## Items in this package

---

Before throwing away any packaging materials, please check thoroughly and make sure you find the following items that come along with this package:

- Turntable
- Turntable Lid
- Turntable Slip Mat
- Turntable Platter
- 45 RPM adapter
- Tonearm Counterweight
- Drive Belt
- Cartridge Alignment Protractor
- Power Adaptor
- Speakers
- Speaker Wire x 2
- PC Link Cable
- User Manual

Please contact SeeYing official customer service if there is any accessory missing from the package. Please retain the original packaging materials for exchange or return purposes.

Email: [support@retrolifeplayer.com](mailto:support@retrolifeplayer.com)

---

## Specifications

---

### Turntable Player: SY101

Power	AC power adaptor, DC output 15 V 2.4A
Power Consumption	70W
Speaker	Ω 1 W x 2
Turntable Speed	33 <sup>1</sup> / <sub>3</sub> , 45 RPM
Speed Variance	±1.5%
Wow and Flutter	≤ 0.15%
Signal to Noise	72 dB
Downforce Range	0-4.0 g
Effective Tonearm Length	8.6" (218.5mm)
Overhang	0.73"
Line Out	180mV(1KHz-10Db,33RPM)
Phono Out	2.5mV(1KHz-10Db,33RPM)
Product Dimensions(W x H x D)	16.46" x 4.84" x 13.62", with lid open 16.46" x 15.55" x 16.14"
Weight	21.69 lbs

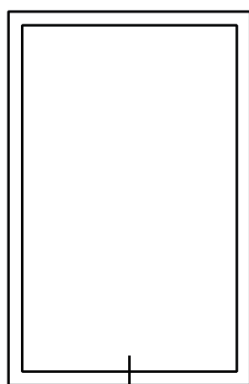
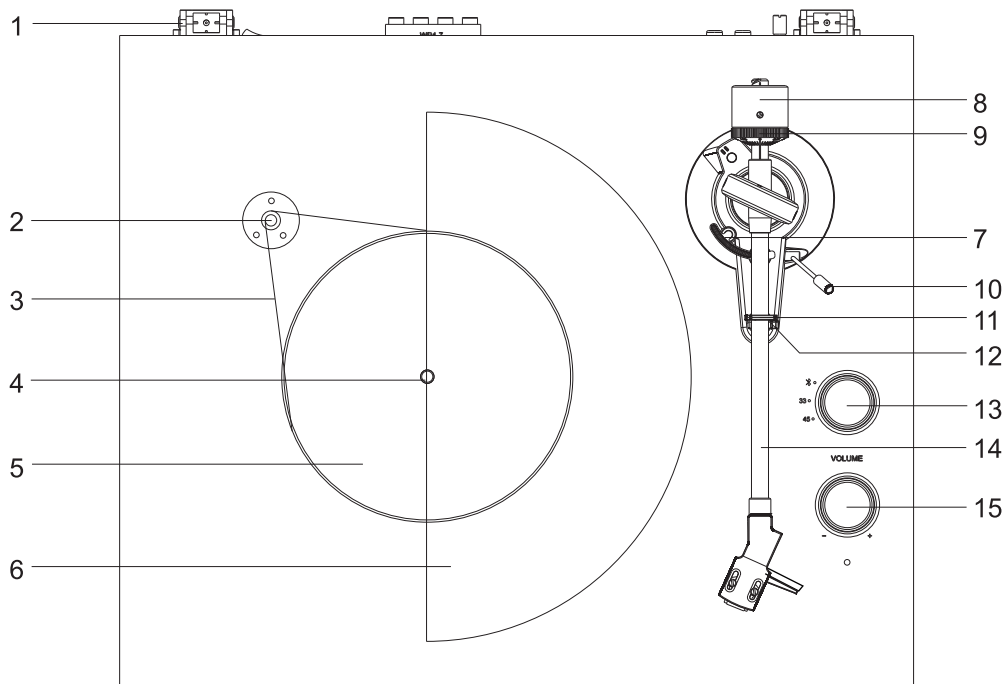
### Cartridge: Audio Technica AT-3600L

Frequency Response	20Hz – 20 kHz
Channel Balance	<2.5dB
Channel Separation	>18dB
Output Voltage	2.5mV
Recommended Load Resistance	47k Ω
Amplifier connection	MM –input
Recommended Tracking Pressure	3.5±0.5g
Weight	0.18oz

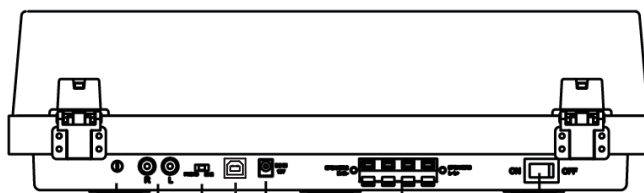
*Note:*

- *Design and specifications are subject to change without notice.*

## Product Description



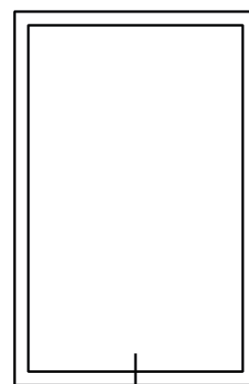
16



17 18 19 20 21

22

23



16

- |   |   |
|---|---|
| <ul style="list-style-type: none"> <li>1. Hinge</li> <li>2. Drive Pulley</li> <li>3. Drive Belt</li> <li>4. Turntable Spindle</li> <li>5. Turntable Hub</li> <li>6. Turntable Platter</li> <li>7. Tonearm Lift</li> <li>8. Tonearm Counterweight</li> <li>9. Downforce Scale Dial</li> <li>10. Cue Lever</li> <li>11. Hold Down Clip</li> </ul> | <ul style="list-style-type: none"> <li>12. Tonearm Rest</li> <li>13. Function Knob</li> <li>14. Tonearm</li> <li>15. Volume Knob</li> <li>16. Speakers</li> <li>17. Ground Connector</li> <li>18. RCA Jacks</li> <li>19. Phono/Line Switch</li> <li>20. USB Port for PC Link</li> <li>21. Power Jack</li> <li>22. Speaker Output Terminals</li> <li>23. Power Switch</li> </ul> |
|---|---|

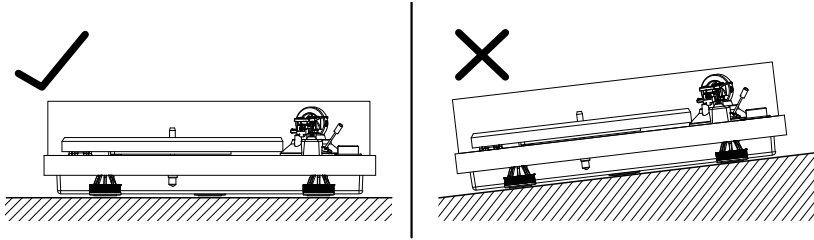


## Initial Setup

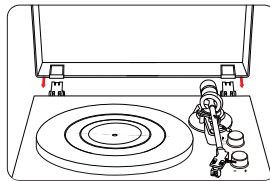
*Note: Do not plug the AC power adaptor to power outlet before all the assembly is completed. Before turning the power on, make sure again all the connection settings are correct. Always turn off the power when connecting or disconnecting.*

### Essential Setup

1. Place the unit on a flat and level surface. The selected location should be stable and free from vibration.

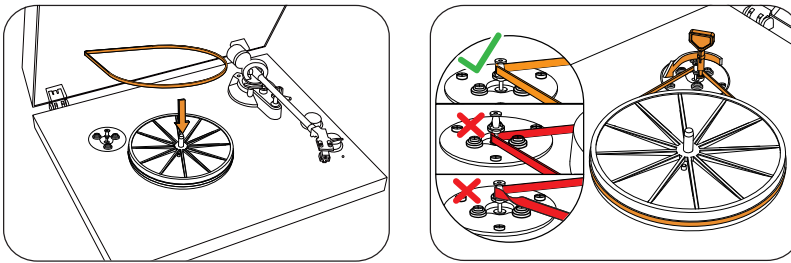


2. Install the turntable lid to the hinges.

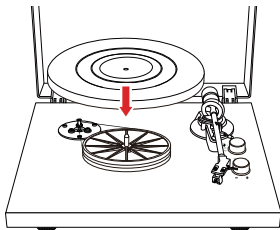


3. Remove the tie-wrap that is holding the tonearm.
4. Install the turntable platter and drive belt accordingly.

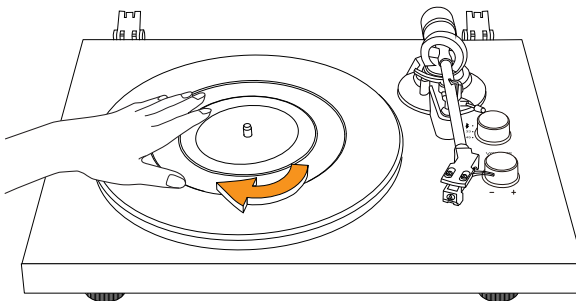
A. Put the drive belt around the Turntable Hub, and then use the provided drive belt assembly tool to help pull the belt to fit around the slot of motor pulley. (grass-colored)



- B. Place the turntable platter through the turntable spindle.



*Notes: Slowly rotate the platter ten times in the direction of the arrow for resetting the auto mechanism to avoid any twists in the belt and make sure the belt rides smoothly along the drive rim on the underside of the platter.*

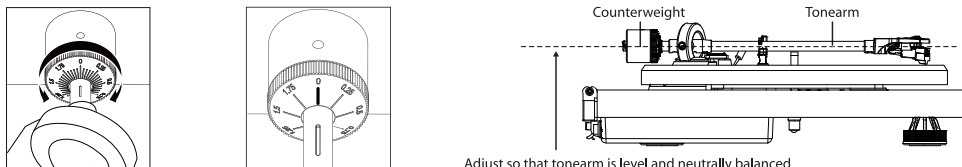


5. Place the slip mat on top of the turntable platter.
6. Slide **Tonearm Counterweight** onto tonearm and twist it lightly onto the rear shaft of the tonearm.
7. Adjust the counterweight to set proper stylus pressure.

---

### Tonearm Counterweight Adjustment for Stylus Pressure

- A. Remove the stylus protector from the cartridge and avoid touching the stylus tip during the adjustment.
- B. Release the tonearm **Hold Down Clip**, gently hold the tonearm and move it away from the **Tonearm Rest**. At this point, the tone arm is unbalanced and free to swing.
- C. Lift up the **Tonearm** from its rest and gently hold it. The tone arm is unbalanced at this point.
- D. Carefully rotate the **Counterweight** towards the front of the turntable until the tonearm is horizontally balanced and hovers freely just above the platter without the stylus touching the platter surface.
- E. Return the tonearm to the **Tonearm Rest** and lock the **Hold Down Clip**.
- F. While holding the counterweight steady without any rotation, rotate carefully only the **Downforce Scale Dial** until the "0" on the scale lines up with the centerline marked along the top of the tonearm.



- G. Rotate the counterweight including the downforce scale dial counter-clockwise (as seen from the front of the turntable) to adjust the pressure to the stylus manufacturer recommendations.

Note:

- Each mark on the scale represents 0.05 g (gram).
- The recommended pressure for the factory-installed cartridge is 3.5 g.  
Note: The cartridge only goes up to 1.75g. You will need to make two full rotations to reach 3.5g.

8. Connect AC adaptor to the **Power Jack** of the unit.

---

### Stereo System Connection

#### RCA Jacks

- The RCA Jacks of this unit are shared as both the Phono output jacks and the Line output jacks. They are determined by the **Phono/Line Switch**.
- When used as a **Line Output**, the jacks output analog line-level signals and could be connected directly with a pair of active speakers or the appropriate input of your stereo system.
- When used as a **Phono Output**, they should be connected to the phono pre-amp or the phono input of the stereo system.
- The Red plug connects with the Right channel and the White plug connects with the Left channel.

Note:

- If the Phono/Line switch is set at LINE position but RCA jacks connected to the stereo system's phono input, the sound might be distorted due to input overload and could damage your stereo system.
- If the Phono/Line switch is set at PHONO position but RCA jack connected to the stereo system's line input, the volume will be very low due to lacking signal pre-amplification.
- RCA Jack is not designed to be connected directly to the passive/unpowered speakers and if it does, the volume will be very low.

#### Spring clip speaker terminals

The spring clip speaker terminals deliver amplified, speaker-level signals as output and should be connected with the passive speakers.

---

## Bluetooth Operation

---

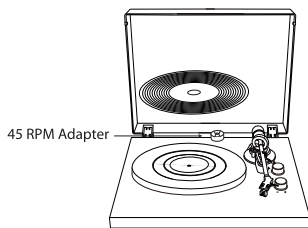
1. Turn the **Function Knob** to Bluetooth mode  $\mathbb{B}$ , you will hear an activation sound from the unit.
2. Turn on the Bluetooth feature of your audio device, search for "Turntable" and pair.
3. Once your device is successfully paired with the unit, you will hear a short confirmation sound from the unit.
4. Play and stream music from your device to the unit.

*Note: Bluetooth version - \*4.2\**

## Turntable Operation

---

1. Press the **Power Switch** to turn on the power.
2. Set the **Function Knob** accordingly. (1/3 33RPM, 45RPM)
3. Place the record on the turntable. Use the **45 RPM Adapter** if necessary.



If playing a 45 RPM record with a large center hole, attach the 45 RPM adapter.

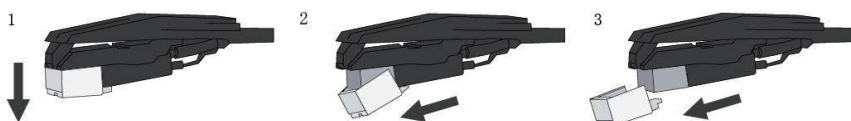
4. Remove the stylus protector from the stylus assembly.  
*Note: To avoid stylus damage, make certain the included stylus guard is in place whenever the turntable is being moved or cleaned.*
5. Release the tonearm **Hold Down Clip**.  
*Note: when the turntable is not in use, remember to lock back hold down clip.*
6. Use the **Cue Lever** to lift up the tonearm.
7. Gently move the tonearm over the record where play is desired to begin. Set the **Cue Lever** back to the down position, the tonearm will descend slowly onto the record and begin to playback.
8. When the record is finished playing, use the **Cue Lever** again to raise the tonearm and then return it to the **Tonearm Rest**. Release the lever to let the tonearm sit back at its rest. To suspend the playback, repeat the same steps.
9. Lock the **Hold Down Clip** to secure the tonearm.

## Needle Replacement

---

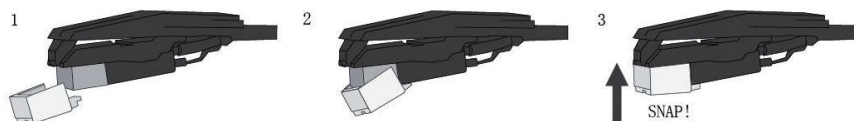
### Removing Needle

1. Gently pull down the front edge of the needle.
2. Pull needle forward.
3. Pull out and remove.



### Installing Needle

1. Position the needle with its tip facing down.
2. Line up the back of the needle with the cartridge.
3. Insert the needle with its front end at a downward angle and gently lift the front of the needle upward until it snaps into place.



## Recording onto a PC through USB Jack:

For installing and recording instructions, refer to the BRIEF INTRODUCTION OF AUDACITY webpage at <https://audacity.onl/download/>

Recording the vinyl to your computer:

- 1). Follow the instructions in this manual to play the vinyl.
- 2). Open Audacity on your computer and follow the recording steps as instructed on the Audacity webpage referenced above.

## Audacity and USB Connection

Audacity supports Windows 10/8/7/XP/ Mac OS X 10.6 or more advanced version, with the EMS memory more than 128MB and Audacity take space of 5MB.

## Instructions for PC Encoding After Recording

### Software instructions

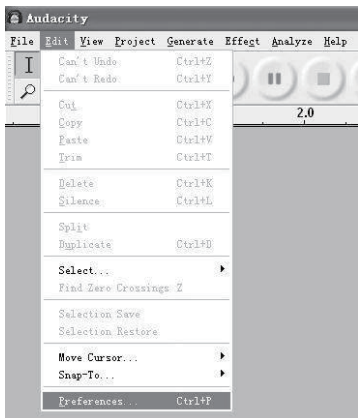
1. Connect the USB cable to your turntable and your computer. No extra drivers are required.

### 2. Recording

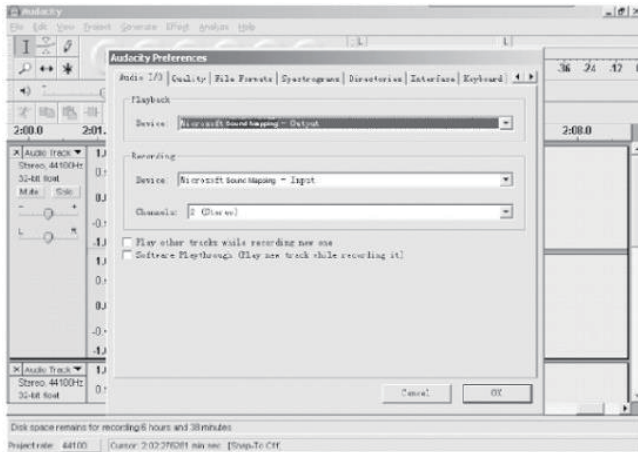
#### 2.1) Open Audacity



#### 2.2) Open the "Edit" menu, then choose "Preferences"



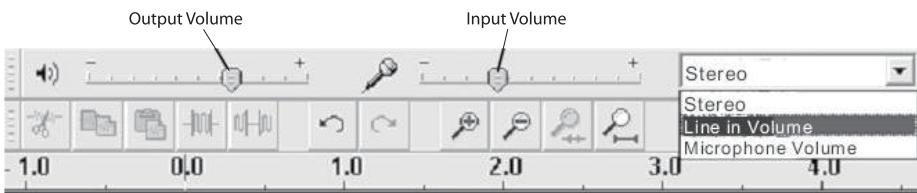
### 2.3) Set your preferences as desired



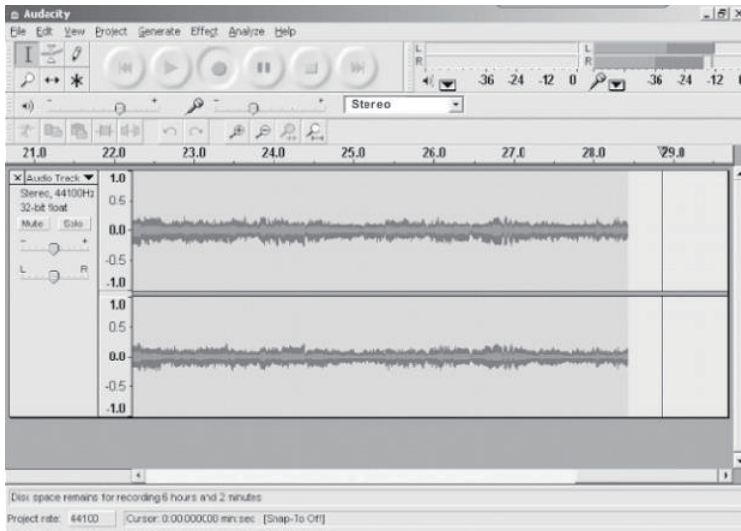
**Note:** Check your computer's audio properties and make sure "SSS USB Audio Device" is selected as shown below:



2.4) Adjust the output and input volume

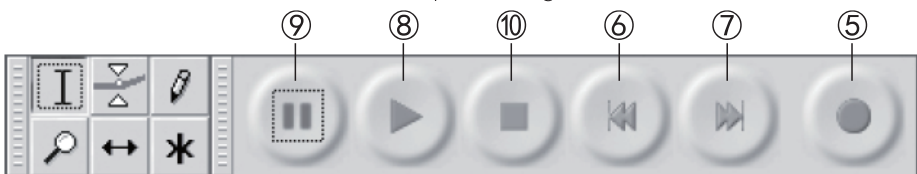


2.5) Press the Record button ● and the left and right tracks will appear on the interface



**Note:** If you do not see the sound wave on the interface when recording, please adjust the line in volume to an appropriate level.

- 2.5.1 ⑤ Press the ● button to start recording;
- 2.5.2 ⑥ Press the ⏮ button to skip to start;
- 2.5.3 ⑦ Press the ⏭ button to skip to end;
- 2.5.4 ⑧ Press the ▶ button to play;
- 2.5.5 ⑨ Press the ⏸ button to pause recording;
- 2.5.6 ⑩ Press the ■ button to stop recording.



### 3. Export the Music Files to Your Preferred Format

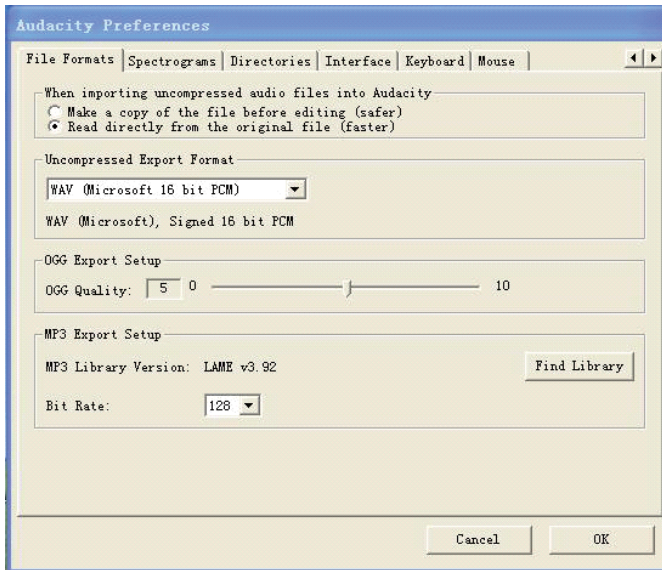
- Once you have finished recording, you should save your music to the computer.
- Open the “File” menu and choose “Export” to export to WAV, MP3 or Ogg formats. WAV format, MP3 format or Ogg format.
- Choose a file format and write a file name to save the music recording.

**Note:** Audacity does not export MP3 files directly; you should download the LAME MP3 encoder. A link to find LAME MP3 can be found at

**<https://www.audacityteam.org/download/>**

### Instructions for Installing LAME MP3 Encoder

- 1) Download “lame\_enc.dll” file, and install it to the software list.
- 2) Open Audacity, click the Main Menu, select “Edit”, then “Parameter, then “File Formats”, and finally click “Searcher.”



---

## Turntable Maintenance

---

1. Do not touch the stylus tip with your fingers. Avoid bumping the stylus on the turntable mat or a record's edge.
2. Clean the stylus frequently with a soft brush with a back-to-front motion only.
3. Clean the records to get rid of dust or grease with a record cleaning brush and record cleaning solution.
4. Clean the turntable lid and turntable cabinet with a slightly dampened microfiber cloth.

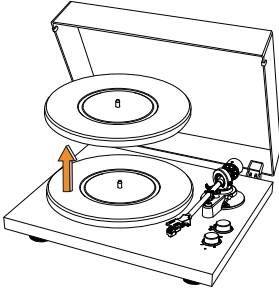
*Note: Do not use cleanser that contains alcohol, benzene or any other harsh chemicals, which might damage the paint and finish of the turntable.*

## Replacing the Belt

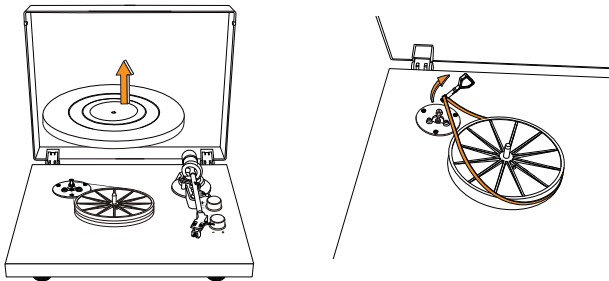
---

- The belt is a consumable part. Replace the belt if the speed of playback slows down or irregular rotation occurs. As a rule of thumb, we suggest replacing the belt once a year.
- Before replacing the belt, be sure to disconnect the product's AC adapter from the outlet.

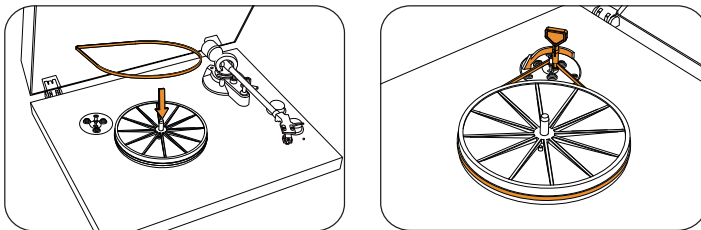
### 1. Remove the slip mat.



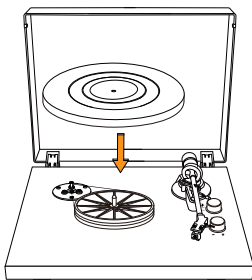
### 2. Remove the main platter, and then remove the old belt.



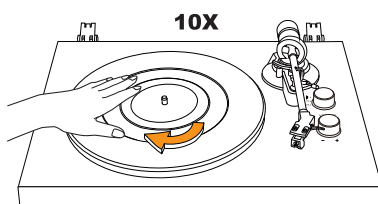
### 3. Loop the new belt around the sub-platter and motor pulley.



### 4. Place the main platter back onto the sub-platter.



### 5. Using your hands, slowly rotate the platter ten times by hand in the direction





## Troubleshooting

Problem	Solution
The platter does not spin.	<ul style="list-style-type: none"> <li>• Is the AC adapter connected to the outlet? -Connect the AC adapter to the outlet.</li> <li>• What's the status of the indicator light? - Power is on, but the indicator light is off. That means the turntable is in ERP mode. Restart the turntable and choose PHONO mode - The indicator light is blue. That means the turntable is in Bluetooth mode. Rotate the Mode switch to PHONO mode - The red indicator light will indicate PHONO mode</li> <li>• Has the belt slipped from the platter? -Correctly place the belt on the platter.</li> <li>• Is the belt placed on the motor pulley? -Check that the belt is placed on the motor pulley (brass-colored) correctly.</li> <li>• Has the belt been damaged? -Replace it with a new belt.</li> </ul>
The platter spins, but there is no sound or the volume is not loud enough.	<ul style="list-style-type: none"> <li>• Are the function settings and input for connected equipment (amplifier, etc.) selected correctly? -Check whether the settings for the connected equipment are correct.</li> <li>• Is the stylus damaged? -Check the stylus and replace it, if necessary.</li> <li>• Is the stylus placed correctly on the body of the cartridge? -Check the cartridge and adjust it, if necessary.</li> <li>• Are the setting positions for the pre-amplifier selector switch correct? -If you are connection to the speaker (not the speakers from the pack) with RCA audio cable, check that the pre-amplifier settings are correct, noting the following common problems and their causes: -If there is no sound, or if the volume is not loud enough, the product is set to the "PHONO" position and connected to the amplifier's AUX/LINE input. -If the volume is too loud or is distorted, the product is set to the "LINE" position, and the connectable equipment is connected to the PHONO input.</li> </ul>
The stylus skips.	<ul style="list-style-type: none"> <li>• Is the record warped? -Check the record.</li> <li>• Is the record scratched? -Check the record.</li> </ul>
There is howling.	<ul style="list-style-type: none"> <li>• Is the product picking up excessive vibrations from the floor, surfaces of the walls, or nearby speakers? -Decrease the vibrations or mount the product on a surface that is not subject to the effects of vibrations.</li> <li>• Is the product mounted on an unstable surface? -Check whether the surface on which the product is mounted is suitable.</li> </ul>
There is noise when the record is playing.	<ul style="list-style-type: none"> <li>• Is there dust on the cartridge's stylus tip? -If dust is stuck to the stylus tip, clean it with a commercially sold brush.</li> </ul>
The sound when the record is playing is either too fast or too slow.	<ul style="list-style-type: none"> <li>• Are the speed settings for this product correct? -Please select the correct speed for the type of record being played.</li> </ul>
Playback speed slows down or there is irregular rotation.	<ul style="list-style-type: none"> <li>• Is the belt stretched out? -Replace it with a new belt.</li> </ul>

---

Problem	Solution
Needle isn't touching the record.	<ul style="list-style-type: none"><li>• The screw on the tonearm rest may have loosened during transport. Gently turn this screw clockwise to move the needle stylus closer to the record.</li></ul>
Needle is scratching the record's surface.	<ul style="list-style-type: none"><li>• Gently turn the tonearm rest screw anticlockwise to move the needle stylus away from the turntable.</li></ul>

*Note: Factory screw tightness is based on the thickness of the included slip mat. If a thinner or thicker 3rd-party slip mat is used, gently adjust the screw as needed following the steps in the last two trouble shooting topics.*

## **Customer Support**

---

**Service Email:** [support@retrolifeplayer.com](mailto:support@retrolifeplayer.com)

**Website:** [www.retrolifeplayer.com](http://www.retrolifeplayer.com)