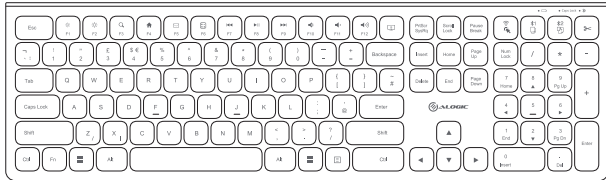




## Echelon Wireless Keyboard for Windows



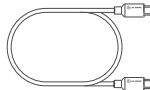
①



②



③



### Package Contents

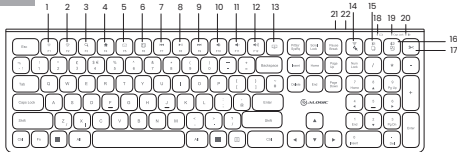
①	Wireless Keyboard
②	2.4GHz Wireless Dongle (USB-A)
③	USB-C Charging Cable



### Specifications

Model	ASKBT3W-UK (Windows)
Device Compatibility	Windows, macOS, Chromebook, iOS, Android
Connection	Bluetooth (3.0 and 5.0), 2.4GHz Wireless Max Range: 10m
Warranty	2 Years

User Manual



### Connecting via the Dongle

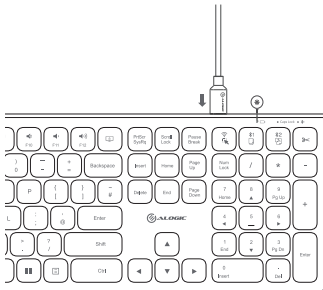
1. Remove the USB dongle from the underside of your mouse and plug it into your computer.
2. Turn on your keyboard.
3. Hold the "FN" and (Fn) down for a few seconds until the connection light begins flashing. Once it stops flashing, your keyboard is connected.
4. If it doesn't stop flashing after 10 seconds, remove the USB dongle from your device and plug it back in. They keyboard should now connect.

### Connecting via Bluetooth

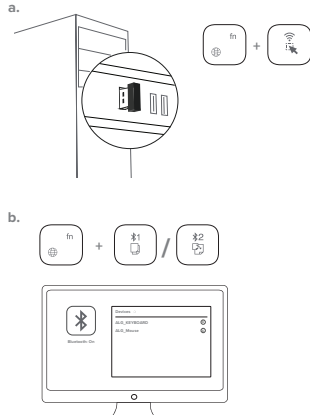
1. Press and hold FN + the (F1) or (F2) keys until the connection light begins flashing green.
2. From your device's Bluetooth menu, pair with ALG\_KEYBOARD.

17	Cut
18	Battery Indicator
19	Caps Lock Indicator
20	Connection Indicator
21	On/Off Switch
22	Charging Port (USB-C)

1



2



### FCC Compliance Statement

This device complies with Part 15 of the FCC Rules. Operation is subject to the following two conditions:

- (1) this device may not cause harmful interference, and
- (2) this device must accept any interference received, including interference that may cause undesired operation.

NOTE: Changes or modifications not expressly approved by the party responsible for compliance could void the user's authority to operate the equipment.

### Declaración de Cumplimiento FCC

Este dispositivo cumple con la Parte 15 de las reglas de la FCC. El funcionamiento está sujeto a las dos condiciones siguientes:

- (1) Este dispositivo puede no causar interferencias perjudiciales y
- (2) Este dispositivo debe aceptar cualquier interferencia recibida, incluidas las interferencias que puedan causar un funcionamiento no deseado.

NOTA: Cambios o modificaciones no aprobados expresamente por la parte responsable del cumplimiento pueden invalidar la autoridad del usuario para operar el equipo.

Responsible Party - U.S. Contact Information

ALOGIC USA LLC  
 37524 Marsten DR  
 Newark CA 94560 USA

### EU Declaration of Conformity

Hereby, ALOGIC Corporation declares that this product is in compliance with Directive 2014/53/EU. The full text of the EU declaration of conformity is available at the following internet address by clicking on the Compliance Documentation link: [www.alogic.co](http://www.alogic.co)



Designed in Australia. Manufactured in China

### Windows Shortcuts

1	Decrease Brightness	9	Next Track
2	Increase Brightness	10	Mute
3	Windows Search	11	Volume Down
4	Home	12	Volume Up
5	Email	13	Lock/Power Options
6	Calculator	14	Select All   2.4Ghz Connection
7	Previous Track	15	Copy   Bluetooth 1
8	Play/Pause	16	Paste   Bluetooth 2