



Winter Gardenz™

QUALITY NEW ZEALAND MADE  
12ft GREENHOUSE SERIES



ENGINEERED  
FOR  
NEW ZEALAND  
CONDITIONS

**10**  
YEARS  
WARRANTY

[www.WinterGardenz.com.au](http://www.WinterGardenz.com.au) | [sales@wintergardenz.com.au](mailto:sales@wintergardenz.com.au) | Phone: AU 0487 757 638

**NZ**  
MADE  
GREENHOUSES

  
**NO PANEL  
BLOWOUTS**

  
**RESISTANT  
QUALITY MATERIALS**

  
**150K/HR  
WIND RATING**



# FEATURES AND BENEFITS



All 12ft Greenhouses are supplied fully optioned and include the following:

- ✓ Double-hinged lockable doors
- ✓ Glazed with 4mm toughened safety glass
- ✓ Temperature controlled roof vent openers
- ✓ Gutter system for rain catchment
- ✓ 10-year warranty

## Optional Extras:

- ✓ Additional doors at end or along side walls.
- ✓ Tinted Glass
- ✓ Powdercoat colour options
- ✓ Construction/assembly

## SUPERIOR DESIGN & CONSTRUCTION

The unique design delivers superior strength and durability, with minimal maintenance required.

## LOUVRE VENTS

Side-louvre vents allow additional airflow, letting cooler air in at the floor level and the warmer air out at the top of the greenhouse.

## OPENING VENTS

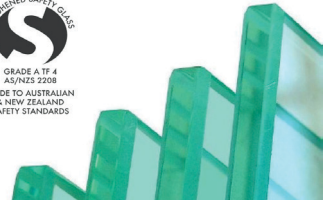
Temperature controlled vents open and close automatically to assist in maintaining the optimum temperature.

## STEEL SUBSTRUCTURE

Made out of structurally engineered steel and built to last! Z450 galvanized, cold-rolled seam-welded steel that is commercially graded. Manufactured from strong grade (310 mpa) steel with proven high-load strength.

## DURABLE

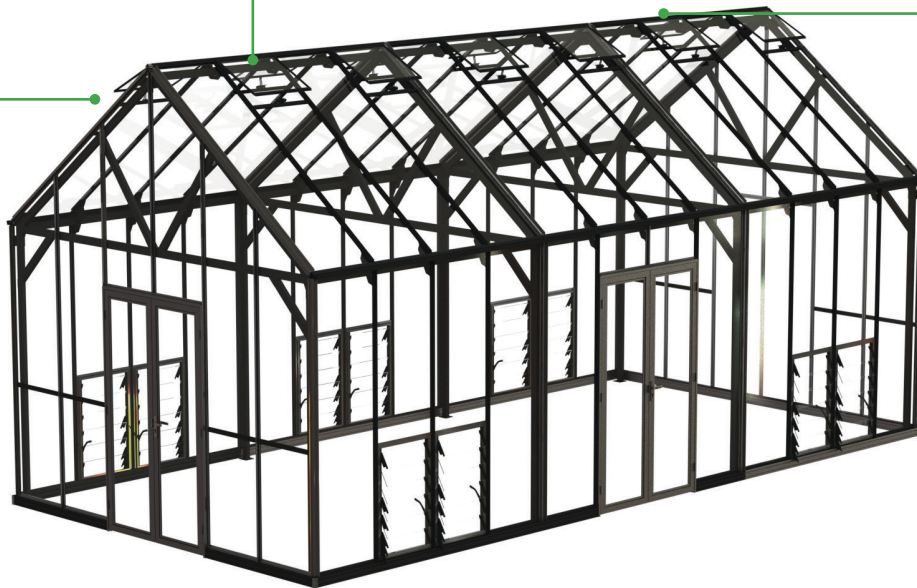
Long lasting, powder coated finish in black with Dulux Powder coat. Looks great and requires minimal maintenance. Covered by Dulux non-fade warranty. 6061 Grade Aluminum extruded in New Zealand with T6 temper for commercial application.



## SAFETY GLASS

### 4mm Toughened

Glass provides superior clarity and longevity and is now significantly stronger. Made to NZ safety standards, this glass can take almost anything you can throw at it. Includes 25yr glazing warranty. Tinted glass option is also available



## SIDE ENTRY DOORS

Options for door placement on any of the 4 walls of the greenhouse. Additional doors after the first set are at an additional cost. Hinged, double opening doors with quality door handles and locks.

Winter Gardenz' stunning new 12ft series is the largest in the residential greenhouse range, standing at nearly 4m tall (2.4m to the eave) and offering a spacious 3.8m width over a range of lengths. The 12ft series offers a significant step up from the 8ft/10ft Elite range, both in terms of height and interior living space.

Built to Winter Gardenz **exacting standards**, the 12ft series is constructed **from durable, quality materials**. The aluminium and glass structure is supported by a **galvanised steel substructure**, and all structural components are

powder-coated with a quality Dulux finish, to provide a **low maintenance** and **easy-clean surface** for years to come.

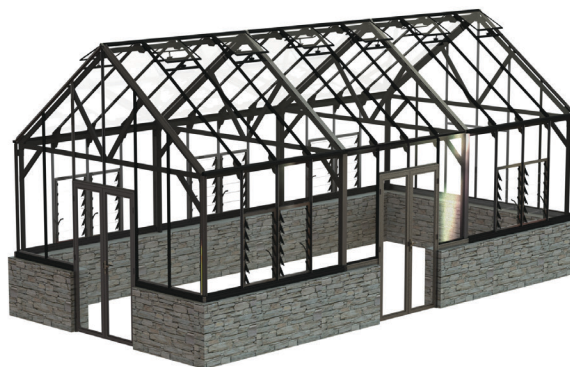
The 12ft series comes with one set of **double-hinged lockable doors** as standard, and both roof and louvre vents to **provide adequate ventilation**. Additional doors, vents, and shelving can also be added if required.

The 12ft series is a **durable and elegant structure** that will stand the test of time.

# PRICING GUIDE



**STANDARD FULL PANEL**



**ELITE STYLE WITH BRICK OR STONE BASE**

Size (ft)	Size (m)	Size in mm	Model #	Roof vents included	Side wall louvres included	Base Price (Inc GST)
12X16	3.8x5.1	3844mm (W) X 5138mm (L)	#UG1216	10	10	\$39,995
12X20	3.8x6.4	3844mm (W) X 6386mm (L)	#UG1220	12	12	\$47,995
12X24	3.8x7.7	3844mm (W) X 7680mm (L)	#UG1224	16	16	\$54,995
12X30	3.8x9.6	3844mm (W) X 9552mm (L)	#UG1230	18	18	\$69,995
12X40	3.8x12.7	3844mm (W) X 12718mm (L)	#UG1240	20	20	\$84,995
12X50	3.8x15.9	3844mm (W) X 15884mm (L)	#UG1250	22	22	\$99,995

Accessory Options	Accessory Price	Accessory Options	Accessory Price
Extra set of hinged doors on any 4 walls	\$1,898	Tinted Roof Panels	\$1,380
Full wall louvres, price per louvre upgrade	\$454	Climate Control Systems	*POA, depends on system
Additional 1/3 (6-blade) louvre	\$339	Foundation Work	*POA, depends on system
Additional full wall (15-blade) louvre	\$569		

\*Custom sizes also available. Typical foundation plan is provided with each kitset. Brick wall shown is for illustration purposes only, it is not included in the kitset. Prices are GST inclusive. Prices are subject to change. Council compliance and suitability of use is the purchasers responsibility. Foundations, brick/block/stone wall for the Elite models are excluded, however detailed plans are provided.

# ACCESSORIES AND DETAIL VIEWS



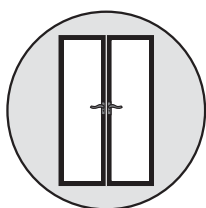
The **architectural series** is **customizable within a modular** system. From **extra ventilation** to **shading** or **extra doors**, we can help you achieve the greenhouse design you are after to give you **maximum control** of the climate inside your greenhouse.

The **added space and height** in an architectural glasshouse allows for having both a protected outdoor entertaining space as well as greenhouse growing with all the climate controls to keep your plants happy and thriving.

With a **tinted roof** and ventilation, you can still enjoy a meal in the greenhouse on a warm day with the extra protection from the harsh sun.

**Electric mechanical arms** give you the added climate control that allows you to **fine-tune the climate** inside your greenhouse.

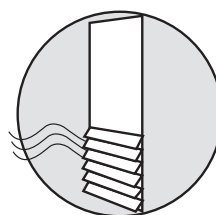
**Airflow** can be increased by adding fans which aid the vents and louvres in circulating air through the greenhouse, aiding in **pollination** and **keeping out pests**.



## SIDE ENTRY DOORS

The architectural series comes with hinged, double-opening doors with quality door handles and locks.

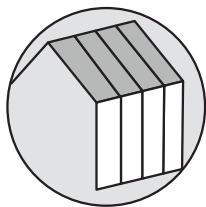
Options for door placement on any of the 4 walls of the greenhouse. Additional doors after the first set are at an additional cost.



## LOUVRE VENTS

Side-louvre vents allow additional airflow, letting cooler air in at the floor level and the warmer air out at the top of the greenhouse.

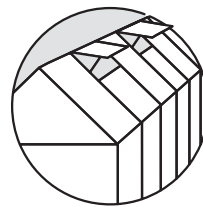
The louvre vents are 1/3 of the panel, with 6 louvre-blades. The greenhouse comes with 2 6-blade louvres per 8ft section (except where doors are located). Additional and/or full-panel louvres are optional extras.



## TINTED ROOF PANELS

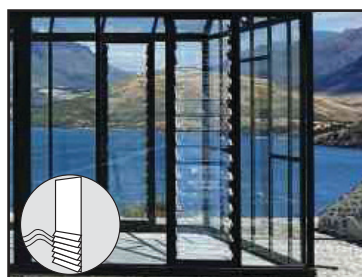
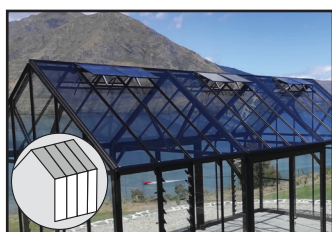
Tinted roof panels help prevent plant-scorching in the summer months. They also help keep it cooler when you are using it as an outdoor entertaining area. It's a light enough tint that it isn't too visible, but enough to cool

the temperature by a few degrees. Tinted panels are a great feature if you are using your greenhouse during the hottest months of the year, for either growing or entertaining.



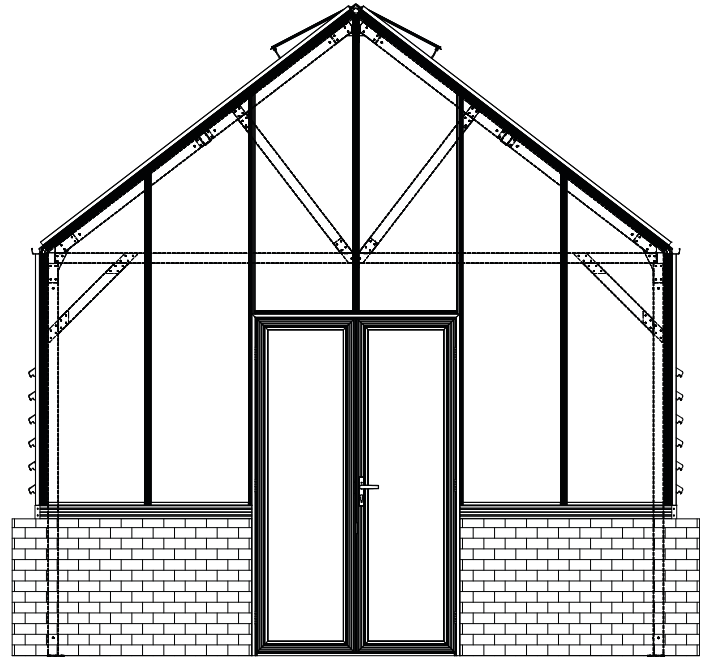
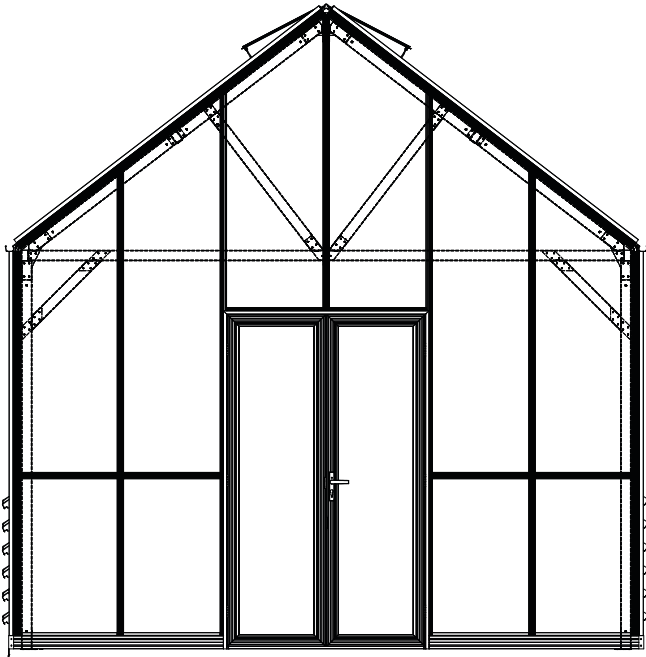
## CLIMATE CONTROL

We can also help you customize your greenhouse with climate-control features like electric mechanical arms for the roof vents, which are more controllable/accurate than the autovent openers. The electric vent openers come with a control box. Other climate control features we offer include shade covers and various fans.





# FULL PANEL VS ELITE STYLE

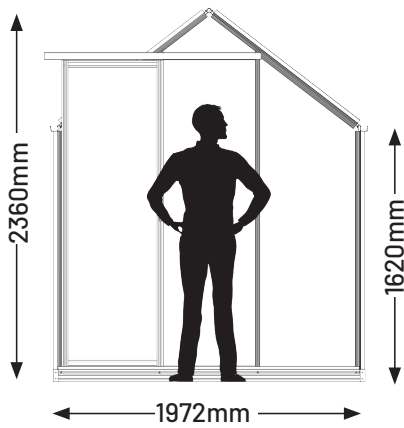


We offer both full-panel and Elite, or brick base-style greenhouses in our Architectural as well as standard ranges. In the Architectural range, both of these options are the same height of 3.9m at the roof line.

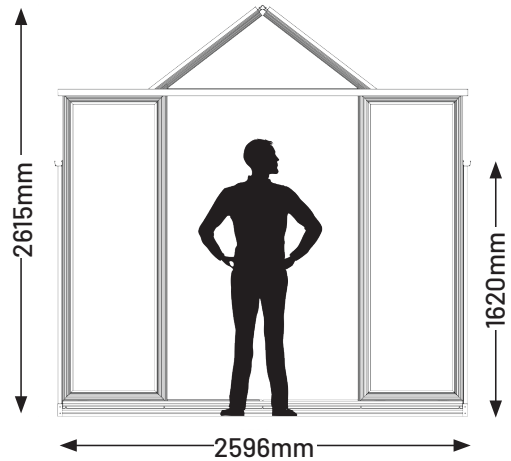
The nib wall, for the Elite style greenhouse, needs to be built by a qualified bricklayer of the clients' choice. It can also be constructed of concrete or timber. The nib wall needs to be 820mm tall, and at least 100mm wide, which if brick is being used, would be 2 bricks wide and about 140mm.



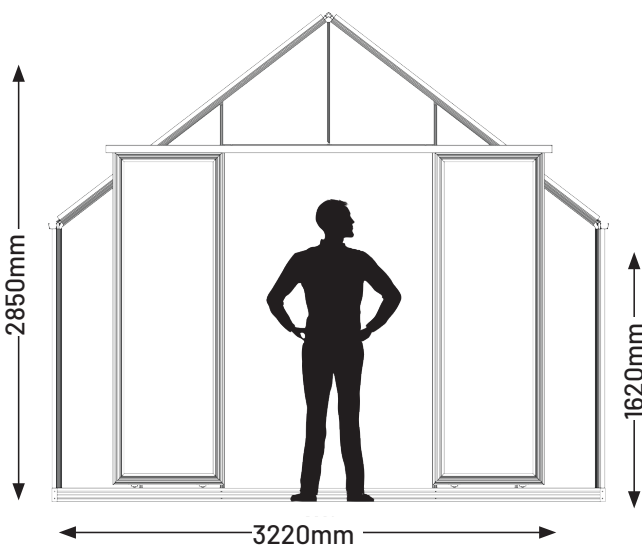
# RESIDENTIAL KITSET VS ARCHITECTURAL SERIES



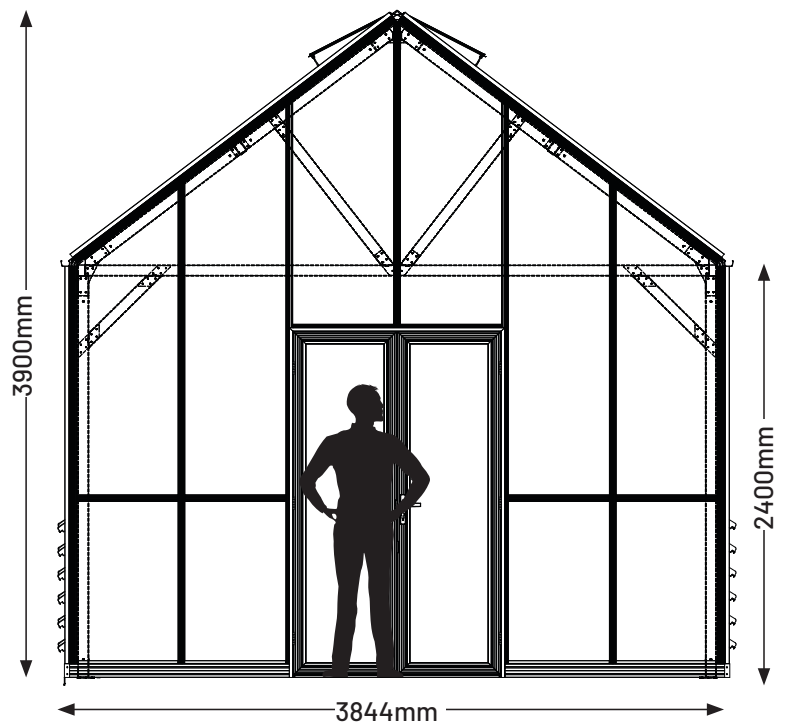
**6FT SERIES**



**8FT SERIES**



**10FT SERIES**



**12FT ARCHITECTURAL SERIES**



# RESIDENTIAL KITSET VS ARCHITECTURAL SERIES



There are several key differences between our **Residential kitset greenhouses** and our **Architectural series greenhouses**. The opposite page gives a visual reference to the dimensions from the front view of the different greenhouse series.

Our **6, 8, and 10ft wide** models fall under our **Residential/ kitset series**. We send these out as a flat pack that can be assembled by the customer or their builder. Our tallest kitset model is 10ft/3.2m wide, 5.2ft/1.6m tall at the eaves or sides and 8.5ft/2.6m tall at the roof line.

Our **Architectural series** stands much taller, with an eave height of 2.4m and a roof height of 3.9m. This increased height in our Architectural series allows for the placement of **doors on the sides**, whereas the kitset sizes do not allow for side-wall door placement.

The increased height also allows a **significantly larger internal air volume**, which assists with **maintaining a stable climate** and helps plants grow.

The Architectural series also has a stonger structural system with the **additional duragel steel substructure**. This also adds capacity to hang plants and lights inside along the cross supports.

The Architectural as well as Elite kitset ranges also have more robust doors than our standard range sliding doors. They are **hinged, lockable doors** versus the sliding doors provided in our standard kitset models.

Other upgraded features of the Architectural series include a higher grade of stainless steel as the main fastener (316s/s rather than 304s/s), highest quality powder coating - Dulux Durtec rather than Dulux Duraloy, as well as a 6-blade louvre system, auto opening roof vents and options for tinted glass.

Due to the larger/more complex structure of our Architectural series greenhouses, these are built on site by our team. The price chart on page 3 gives you an estimate of approximate build costs, but it also depends on where in the country it is located, site access, and other factors hence we give a range in costs.



8FT RESIDENTIAL SERIES



12FT ARCHITECTURAL SERIES



# CLIENT PHOTOS

