

# MOST CONCRETE REPAIR PRODUCTS **FAIL**

## WHY PRODUCTS FAIL?

Poor Bonding  
Too Brittle  
Too Soft  
Difficult Application  
Difficult Prep and Dusty.  
Difficult Conditions  
Too cold, too hot.

## THE CONCRETE MENDER WAY

Microdoweling™ rock bonding.  
Polyurethane **not** Epoxy.  
Easy 1:1 mixing and workable.  
Less invasive prep and methods.  
Apply at any temp. -30F to 100F  
Restores aggregate interlock.

## KEY BENEFIT

Repairs have a long life.  
Absorbs shock and vibration.  
Structural Repair  
Only basic equipment needed.  
Less dust or exposure.  
Make repairs today.

# MILES OF CRACKS **NEED** TO BE REPAIRED

## KEY ROADWARE MARKETS

Warehouse Floors  
Freezer Warehouse Floors  
Industrial Floors  
Retail Floors  
Delamination Repair  
Crack Injection  
Polished Concrete  
Control Joints- Spalls

## 10 MINUTE CONCRETE MENDER™

Ultra-low Viscosity **8cps**  
Surface Tension **1/3** of water.  
Add sand to **double** volume.  
Polishable and grindable.  
Easy cartridge mixing.  
Easy bucket mixing.  
Easy-injection  
Floors and Walls.

## LESS INVASIVE= LESS DUST

Reduce concrete dust exposure  
with less cutting and grinding.

Easy-injection Concrete Mender  
repairs are less invasive.



# 10 MINUTE CONCRETE MENDER™ **WORKS!**

## ROADWARE TECHNOLOGIES

Polymer Formulation,  
Development, and Processing,

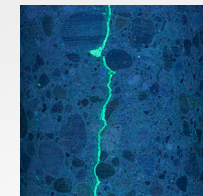
### Brands:

10 Minute Concrete Mender™  
Concrete Mender VO™ Low Odor  
MatchCrete™ Clear  
Flexible Cement II™



## LOCAL DISTRIBUTORS

Application training  
Product stocking  
Expert support.



ROADWARE INCORPORATED [www.concretemender.com](http://www.concretemender.com) 800-522-7623  
381 BRIDGEPOINT WAY · SOUTH SAINT PAUL, MN 55075

# ROADWARE 10 MINUTE CONCRETE MENDER™



Roadware 10 Minute Concrete Mender™ is a **two-part polyurethane** that penetrates deep into concrete to make permanent repairs. **At less than 8 cps, Concrete Mender actually injects itself into the matrix of the concrete and shores up the existing concrete as well as making the repair. Concrete Mender eliminates the bond line, Microdowling™ into the concrete. Cures grey.**



**Roadware Incorporated**  
381 Bridgepoint Way  
South Saint Paul, MN 55075  
800-522-7623  
MADE IN USA  
www.roadware.us

- 80300 300x300ml cartridge
- 80020 Two Gallon Kit
- 80050 Ten Gallon Kit
- 1005 Static Mixer 24 element
- 1105 Flow Restrictor
- 1006-14/15/18 Needle Tip Mixer
- 1006-STR Easy Injection Mixer
- 5300 600ml Application Gun

## Things to know:

## PROFESSIONAL USE ONLY • NOT FOR USE IN RESIDENTIAL HOMES OR BASEMENTS



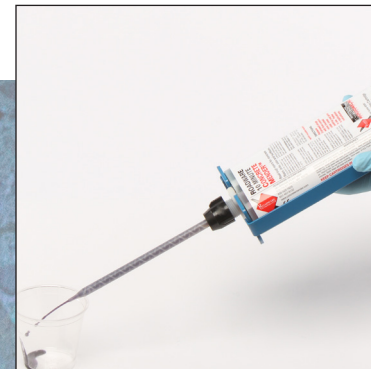
Flow-Controller is stored under packing cap.



Place Flow-Controller over cartridge openings before attaching mixer. See instructions.



Purge air. Slowly squeeze gun while tipping up and tilting side to side.



Keep mixer pointing down once material is flowing.



Sand: Dry 4030 grit manufactured quartz or equivalent is recommended. Figure about 4 lbs per cartridge or 26 lbs per gallon of Concrete Mender.

## Structural Repair

Concrete Mender™ is a structural repair that can bond a slab back together and transfer dynamic loads. Use caution when repairing exterior concrete or re-cracking may occur.

## Industrial Floors

Repair cracks and spalls, plus control joints more than one year old. Tough enough for the heaviest lift truck service.

## Cold Storage

Repair frozen concrete below -20F. It will take a few hours to cure, but the repair will last. See website for special techniques.

## Exterior Repairs

Concrete Mender cures gray, but will turn buff/yellow when exposed to sunlight over time. Coat exterior repairs with an opaque coating or similar material if needed.

## Floor Coating Prep

Repair cracks, spalls, and joints prior to floor coating. Compatible with most industrial floor coating systems.

## Delaminations

No pumps or ports needed. Just drill a 3/8" access hole into the void and inject with the 1006-STR Easy Injection Mixer.

## Easy-injection

No pumps or ports needed. Just drill a 3/8" access hole into the crack and inject with the 1006-STR Easy Injection Mixer.

## Polishing

Concrete Mender may be honed and polished without gumming up the pads or smearing into the surface.

## Anchoring

Anchor bolts and repair railing mounts quickly and easily. Repair concrete prior to installing anchors.

## More Yield

Concrete Mender™ can more than double in volume when adding dry manufactured quartz or sand. One gallon of Concrete Mender can make 2.2 gallons of repair material.

Coverage: Packaging	Cubic inches of material
One 21 fl. oz. cartridge set (neat)	36.614
One gallon bulk mixed (neat)	231
One gallon bulk mixed with sand	460-700
(Approximate yield based on 1 gallon bulk liquid and 2 - 3 gallons of 30-40 grit manufactured sand.)	

Approximate Liner feet per 21oz Cartridge with 2x 40-30 grit sand\*

Crack Depth/Width(inches)

	1/4	3/8	1/2	5/8	3/4	1
1/8	195.5	130.0	97.5	78.0	65.0	49.0
1/4	97.5	65.0	49.0	39.0	32.5	24.5
3/8	65.0	43.5	32.5	26.0	21.0	16.5
1/2	49.0	32.5	24.5	19.5	16.5	12.0

\*Note: The above coverages are approximations and vary significantly depending on the type of sand used, the characteristics of the concrete, and the profile of the crack to be repaired. Always test a small portion of a large job to determine the amount of product needed.