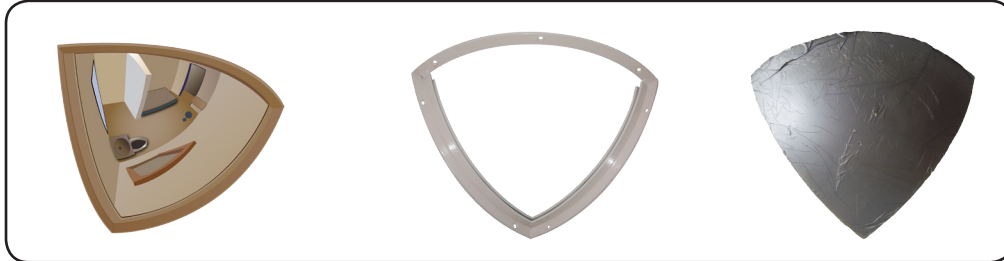




DuraVision™ Convex Mirror Product Sheet:



Quarter Dome Polycarbonate

The Quarter Dome should be corner mounted in cells and at right angle corners to provide 90° vision and prevent surprise attacks or collisions. Ideal for use in situations where space is at a premium.

Features

- Virtually indestructible and unbreakable, mirror quality polycarbonate face
- Pure reflective coating
- Powder coated steel frame with unique tamper-proof design
- Recessed, tamper-proof fixings
- Optional foam insert to enhance strength.
- Can be used in conjunction with CCTV to enhance effectiveness & safety

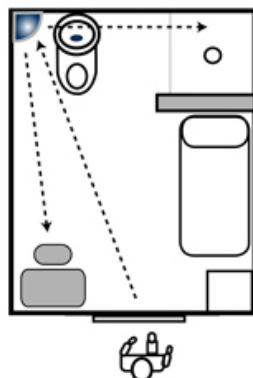
Suitable Uses

- In cells for safe inspection
- Day rooms and visitation areas
- Right angle corridors

Specifications

Code	Size	View Distance	Mirror Face	Frame	Mounting Holes
17527HD	300x300mm	Up to 6m	3mm Polycarbonate	Powder Coated Steel	7
17560HD	450x450mm	Up to 9m	3mm Polycarbonate	Powder Coated Steel	8

Positioning in Cell



Situation Images:



▶ Safe Inmate Inspection



▶ Right Angle Corridors



▶ Cell Observation

DuraVision™ Mirror Systems

Find our more about the great range of DuraVision Mirror Systems at our website...



www.duravision.net
www.correctionsmirror.com