

CORE16

For Chromebooks,
Laptops and Tablets



The Smart Alternative to the Charging Cart.

Key Features for Academic Results

Small Vertical Footprint

Two Towers take up less than half of the square footage of a single cart.

Maintenance Free Cable Management

Perfected cable management provides quick device return and retrieval. IT staff won't have to waste time rewiring again.

Visual Security

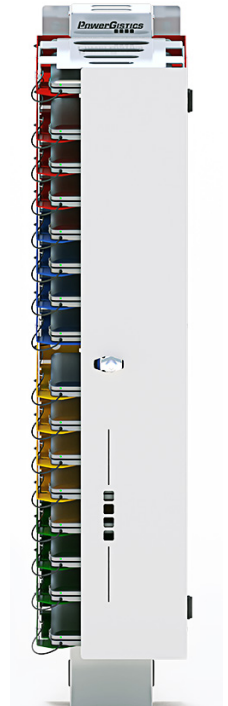
The asymmetric door allows teachers to clearly see if all the devices are charging and stored from anywhere in the classroom.

Antimicrobial Powder Coating

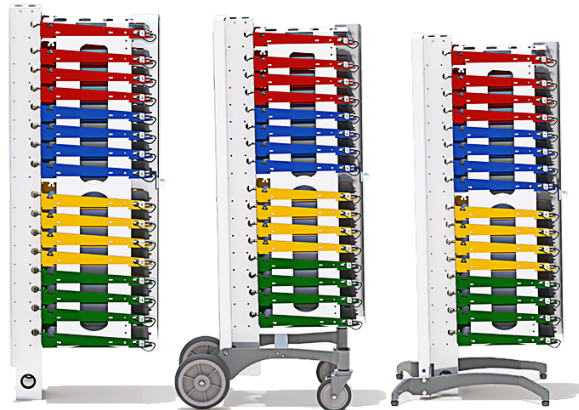
This gives an extra layer of protection against spreading common germs.

Versatile Mounting Options:

Wall mount, stands, or rollers are designed specifically to evolve to your future deployment needs.



W 11.25"



TECH SPECS – Model #: 1C160

16 shelf wall mounted Tower

TOWER DIMENSIONS:

H 51.50" x W 11.25" x D 20.00"

H 130.81cm x W 28.58cm x D 50.80cm

Power Supply:

16 Outlet Power Strip 120V, 15A Circuit Breaker
For Standard 110V Outlets

Cord Length: 10' / 3.05m

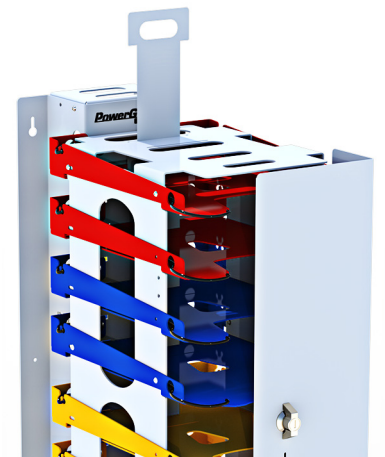
Assembled Weight: 51.00lb / 23.13kg

Shelf Spacing: 1.75" / 4.45cm

NEW FOR 2021

TechStop Shelves

Futureproof shelves with an adjustable TechStop limiter that keeps devices at the front of the shelf, making it easier for users of all ages to access devices.



800-433-6326
www.genesis-technologies.com

Genesis
Technology Solutions for Education,
Non-Profit, and Government.

Versatile and Futureproof Shelves

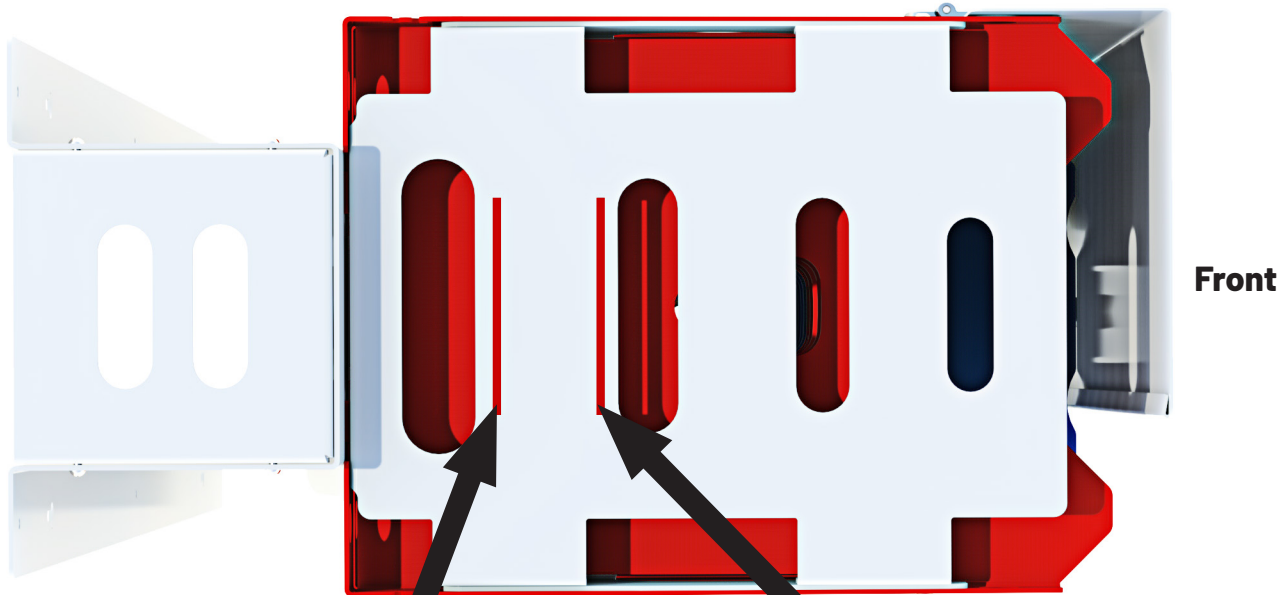
The adjustable TechStop keeps devices at the front of the shelf, making it easier for users of all ages to plug in or unplug devices during return or retrieval. Insert the TechStop into the appropriate slot for your device sizes, or remove altogether for larger laptops.



PLACEMENT OPTIONS FOR THE TECHSTOP



Removal of TechStop
for devices up to 14.8"



TechStop in second slot
for devices up to 11.25"



TechStop in first slot
for devices up to 10.25"

