



GOLD GEL

PREMIUM GEL INSERT

INSTALL VIDEO AT: [HTTP://WWW.YOUTUBE.COM/LUIMOTOCHANNEL](http://www.youtube.com/luimotochannel)

INSTRUCTION MANUAL



LUIMOTO GOLD GEL INSTALL INSTRUCTIONS

THANK YOU FOR PURCHASING LUIMOTO GOLD GEL. BELOW YOU WILL FIND DETAILED INSTRUCTIONS ON HOW TO INSTALL YOUR LUIMOTO GOLD GEL INSERT. A VIDEO TUTORIAL IS ALSO AVAILABLE ONLINE AT [HTTP://WWW.YOUTUBE.COM/LUIMOTOCCHANNEL](http://www.youtube.com/luimotochannel)

PLEASE READ OVER THIS GUIDE CAREFULLY STEP BY STEP. SKIPPING ANY OF THE STEPS MAY CAUSE YOUR GOLD GEL INSERT TO BE IMPROPERLY FITTED. INSTALL AT YOUR OWN RISK*

ESTIMATED INSTALL TIME: APPROXIMATELY 3 HOURS

ONLY SIMPLE TOOLS ARE REQUIRED TO DO THE INSTALL. YOU CAN FIND ANY OF THESE IN YOUR LOCAL HARDWARE STORE. USE POWERTOOLS ONLY IF YOU HAVE EXPERIENCE.*

TOOLS NEEDED:

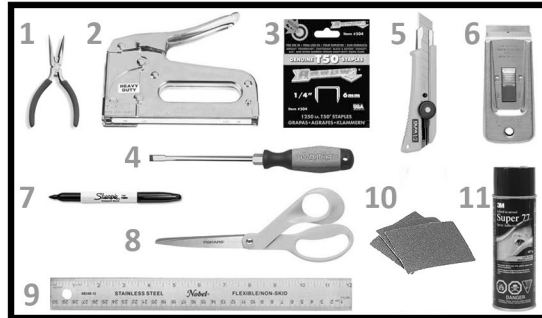
SEAT COVER INSTALLATION/REMOVAL
SOMEONE TO ASSIST YOU (OPTIONAL)

1. NEEDLE NOSE PLIERS
2. STAPLE GUN
3. STAPLES (6mm, 1/4in)
4. FLAT HEAD SCREWDRIVER

GEL PAD INSTALL

SOMEONE TO ASSIST YOU (OPTIONAL)

5. ADJUSTABLE HEIGHT UTILITY KNIFE
6. SCRAPER TOOL WITH RAZOR BLADE
7. PERMANENT MARKER
8. MEDIUM SIZED SCISSOR
9. RULER
10. 40-100 GRIT SAND PAPER
11. SPRAY GLUE (TO SECURE SMOOTHING FOAM LINER - OPTIONAL)



SECTION 1: FOUNDATION:

1A UNBOLT SEAT OFF MOTORCYCLE (REFER TO YOUR OWNERS MANUAL)

1B UNINSTALL SEAT COVER USING FLAT HEAD SCREWDRIVER TO LIFT STAPLES, AND NEEDLE NOSE PLIERS TO REMOVE STAPLES.

1C MEASURE THE CENTER OF YOUR SEAT, DRAW A LINE RIGHT THROUGH THE MIDDLE OF THE SEAT FROM FRONT EDGE TO BACK EDGE. (FIG.1C)

SECTION 2: ACHIEVE OPTIMAL GEL SEATING COVERAGE

2A LOCATE TOP SIDE OF GEL (TOP SIDE HAS SMOOTH PLASTIC LAYER - BACK SIDE HAS A REMOVEABLE PLASTIC LAYER THAT COVERS THE ADHESIVE SURFACE) (SEE FIG.2A)

2B DRAW A LINE DEAD CENTER ON THE 24x24cm (9.25X9.25in) GOLD GEL ON ITS TOP SIDE (FIG.2B)
ALLOW INK TO DRY.

2C PLACE GOLD GEL CENTERED WITH CENTER LINES ON SEAT FOAM.

2D LOCATE YOUR ISHIAL TUBEROICITIES "SITTING BONES" (FIG.2D) THIS AREA NEEDS THE MOST COVERAGE FOR MAXIMUM COMFORT.

2E SIT ON THE SEAT IN YOUR USUAL RIDING POSITION

*ENSURE YOUR ISHIAL TUBEROICITIES HAVE ENOUGH COVERAGE BY THE GEL. SLIDE GEL UPWARDS OR DOWNWARDS AS NEEDED.

2F WHEN YOU ARE SATISFIED, DRAW A HORIZONTAL LINE ON THE FOAM AT THE BACK OF THE GEL. (SEE FIG.2F)

2G GET OFF THE SEAT AND ENSURE GOLD GEL DID NOT SHIFT BY CHECKING THE CENTER POINT AND HORIZONTAL LINE.

2H DRAW A MAXIMIZED, NEAT, AND CONCISE SHAPE THAT HAS ENOUGH COVERAGE FOR YOUR NEEDS. IF YOUR SEAT HAS STEEP DOWNWARD/UPWARD CURVES ON THE SIDES/BACK OF THE SEAT, THESE AREAS SHOULD BE LEFT ALONE AND NOT MODIFIED. IT WILL COMPLICATE THE INSTALL PROCESS, AND THE GEL MAY NOT BE ABLE TO CONTOUR WITH THE HARSH ANGLES. GENERALLY YOU DO NOT SIT IN THESE AREAS ANYWAYS, SO THERE IS NO REASON TO EXTEND THE GEL PAST THESE AREAS. THE GOLD GEL INSERT SHOULD COVER THE FLATTEST AREA OF THE SEAT ONLY, WHICH IS THE TOP AREA WHERE YOU SIT. VERY SLIGHT DROP-OFF CONTOURS ARE ACCEPTABLE. FOR MOST USERS, THE SHAPE SHOULD REPRESENT A TAPERING TRAPEZOID TOWARDS THE FRONT. (SEE FIG.2H)

2I USING A PAIR OF SCISSORS, CUT THE GOLD GEL ALONG YOUR MARKINGS ON A FLAT SURFACE. CUT AS STRAIGHT AND UPRIGHT AS POSSIBLE.

2J PLACE GEL PAD BACK ONTO SEAT ACCURATELY, TRACE ALONG EDGES OF THE GOLD GEL PAD ONTO SEAT FOAM. (SEE FIG.2J)

2K REMOVE GEL PAD, AND DRAW MULTIPLE GRID LINES IN BETWEEN THE MARKINGS SPACED AT 2cm (.75in) APART. (SEE FIG.2K)

1C



DRAW A CENTER LINE ON FOAM

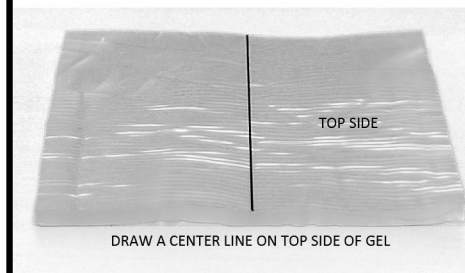
2A



ADHESIVE SIDE (BACK SIDE)

TOP SIDE

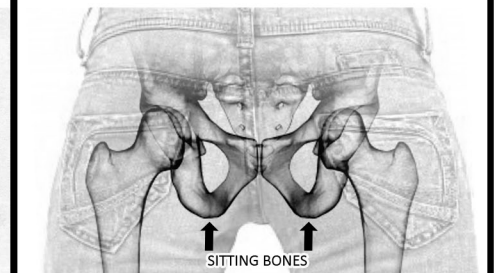
2B



TOP SIDE

DRAW A CENTER LINE ON TOP SIDE OF GEL

2D



SITTING BONES

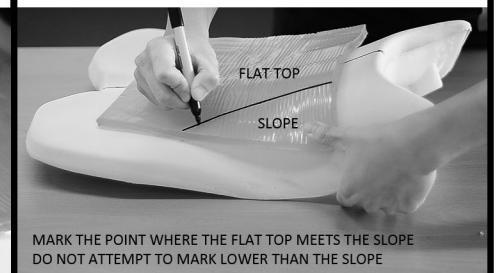
2F



SEAT BACK SIDE
WHEN YOU ARE SATISFIED WITH THE GEL POSITIONING MARK A HORIZONTAL LINE ON THE FOAM AT THE BACK SIDE OF THE SEAT

HORIZONTAL LINE

2H



FLAT TOP

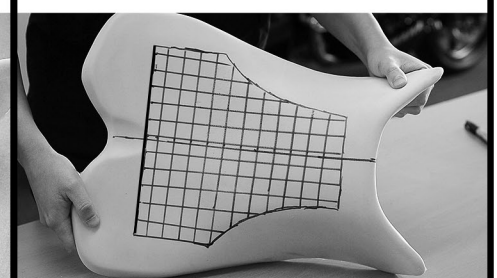
SLOPE

MARK THE POINT WHERE THE FLAT TOP MEETS THE SLOPE DO NOT ATTEMPT TO MARK LOWER THAN THE SLOPE

2J



2K



SECTION 3: TRIMMING A DITCH TO INSERT YOUR GOLD GEL

3A WITH THE RETRACTABLE UTILITY BLADE, ADJUST THE BLADE LENGTH AT 1cm (7/16in). THE LENGTH SHOULD BE MEASURED FROM THE TIP OF THE BLADE TO THE BLADE STOPPER (SEE FIG 3A)

3B FROM THE INSIDE EDGE OF YOUR PEN MARKING, MAKE YOUR INITIAL CUT INTO FOAM CAREFULLY UP TO THE BLADE STOPPER. NOW, IN A SEE-SAW MOTION, CONTINUE CUTTING ALONG THE INSIDE EDGE OF YOUR PEN MARKING. ONLY CUT AS DEEP AS THE BLADE LENGTH (THE BLADE STOPPER WILL HELP YOU MAINTAIN THE 1cm (7/16in) DEPTH. (SEE FIG.3B)

3C SCORE YOUR GRID LINES CLEANLY IN THE SAME MANNER. NOW, YOU SHOULD HAVE SCORE MARKS ALL ALONG YOUR PEN MARKS AT EXACTLY 1cm (7/16in) IN DEPTH. IN THE FOLLOWING STEP, YOU WILL NOW CUT OUT THE LITTLE SQUARES STARTING FROM ONE CORNER AND WORKING YOUR WAY TO THE END.

3D WHILE PINCHING THE LITTLE FOAM SQUARES WITH ONE HAND, WITH THE OTHER HAND, EQUIPPED WITH YOUR RAZOR BLADE SCRAPER TOOL, CUT THE SQUARES OUT AS LOW AS YOU CAN, IN A SIDE TO SIDE MOTION, CAREFULLY AND SLOWLY UNTIL YOU DO NOT SEE YOUR SCORE MARK MADE FROM THE UTILITY BLADE FROM STEP 3B AND 3C.

HINT: YOU CAN CHECK YOUR DEPTH BY USING TWO FINGERS AND PULLING THE FOAM APART A LITTLE BIT. IF YOU STILL SEE THE SCORED GRID MARKS, YOU ARE NOT SCRAPING DEEP ENOUGH.

DROP IN YOUR GOLD GEL INSERT ONCE IN A WHILE TO CHECK HEIGHT AND FITMENT. MODIFY IF NECESSARY WITH YOUR RAZOR BLADE SCRAPER, UTILITY KNIFE AND SAND PAPER, GIVING IT A SMOOTH, EVEN SURFACE AT 1cm (7/16in) IN DEPTH.

3E WHEN COMPLETE, THE GEL SHOULD LOOK FLUSH WITH THE FOAM. (SEE FIG.3E)

SECTION 4: INSTALL THE FOAM SMOOTHING LINER AND RE-INSTALL THE SEAT COVER

THE PURPOSE OF THE FOAM SMOOTHING LINER IS TO SMOOTH OUT BUMPS AND IMPERFECTIONS WHICH MAY SHOW THROUGH AFTER INSTALLING YOUR SEAT COVER.

4A LAY THE FOAM SMOOTHING LINER FOAM SIDE DOWN ON TOP OF THE SEAT.

4B PULL DOWNWARD WITH EQUAL PRESSURE ON THE FOAM SMOOTHING LINER ON BOTH SIDES LIKE AS IF YOU WERE INSTALLING IT. YOU SHOULD NOT BE ABLE TO SEE THE GEL SHAPE PROTRUDING OUT.

(SEE FIG.4B) IF YOU DO, THEN YOU WILL HAVE TO GO BACK AND REPEAT STEPS 3D TO 4B.

4C REMOVE THE PLASTIC BACKING ON THE BACK SIDE OF THE GOLD GEL INSERT TO REVEAL THE ADHESIVE SURFACE. CAREFULLY PRESS THE GOLD GEL INSERT INTO THE DITCH AS PERFECTLY AS YOU CAN. RE-ADJUSTING THE INSERT MAY CAUSE DAMAGE TO YOUR FOAM.

4D SPRAY A LIGHT MIST OF SPRAY GLUE ONTO YOUR SEAT. PRESS YOUR FOAM SMOOTHING LINER FOAM SIDE DOWN ONTO THE SEAT. IN MOST CASES, THIS WILL HELP SECURE THE LINER SO IT DOES NOT SHIFT DURING THE FINAL INSTALLATION PROCESS OF THE SEAT COVER. (OPTIONAL)

4E PRESS THE LINER TOWARDS THE SEAT AND CUT ALONG THE VERY BOTTOM EDGES OF THE PLASTIC PAN/FOAM ALL AROUND. (SEE FIG.4E)

4F RE-INSTALL YOUR OEM SEAT COVER OR YOUR NEW LUIMOTO SEAT COVER. (INSTRUCTIONS INCLUDED WITH OUR SEAT COVER PURCHASE)

4G PAT YOURSELF ON THE BACK, AND GO FOR A NICE AND COMFORTABLE RIDE.

WE SINCERELY HOPE YOU ENJOY THE RIDE WITH LUIMOTO GOLD GEL INSERT - THE NEW STANDARD FOR MOTORCYCLE COMFORT.

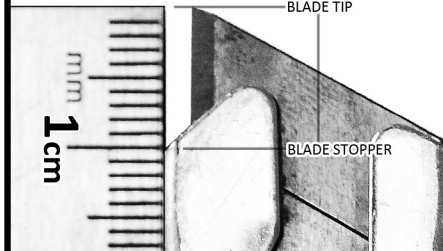
GOLD GEL

DISCLAIMERS

*STORE YOUR UTILITY KNIFE/BLADES AND TOOLS PROPERLY, DO NOT ALLOW CHILDREN TO ACCESS THEM EASILY. DO NOT BE UNDER THE INFLUENCE OF DRUGS OR ACHOLH AS YOU ARE HANDLING SHARP BLADES. YOU AND/OR OTHERS CAN BE SERIOUSLY INJURED OR KILLED IF TOOLS ARE MISHANDLED. LUIMOTO IS NOT RESPONSIBLE FOR ANY DAMAGES, INJURIES INCURRED WHILE FOLLOWING THIS INSTRUCTION MANUAL. INSTALL SOLELY AT YOUR OWN RISK.

*USING POWER TOOLS WITHOUT EXPERIENCE MAY DAMAGE THE SEAT OR CAUSE A DRAMATIC ACCIDENT LIKE HURTING/KILLING YOURSELF.

3A

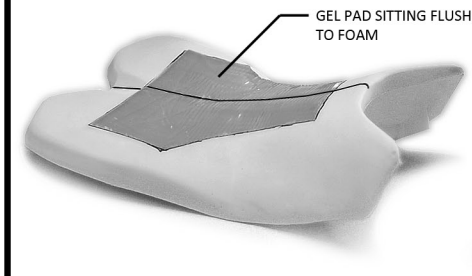


3B

SCORE THE INSIDE OF THE GEL PAD TRACING

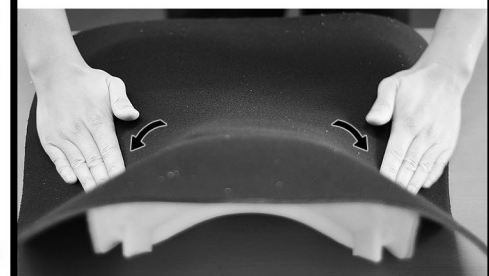


3E

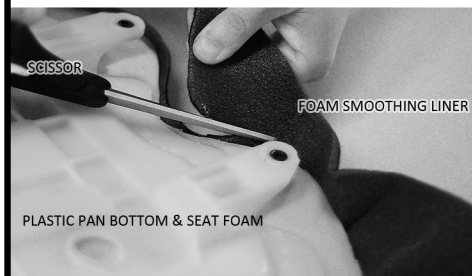


4B

PULL BOTH SIDES DOWNWARD. YOU SHOULD NOT BE ABLE TO SEE THE GEL SHAPE.



4E



ENJOY THE RIDE WITH LUIMOTO GOLD GEL. THE NEW STANDARD IN MOTORCYCLE COMFORT.

FOLLOW US

POST YOUR EXPERIENCE. CHECK OUT COOL BIKES AND UPDATES!



luimoto



@luimoto

SECTION 5: TIPS AND TRICKS!

BEFORE YOU INSTALL

5A RESEARCH YOUR SEAT ONLINE BEFORE INSTALLATION. SOME SEATS ALREADY COME WITH GEL INSTALLED BY THE FACTORY. CLICK HERE FOR ANY MODELS KNOWN THAT MAY CAUSE ISSUES [HTTP://WWW.LUIMOTO.COM/GGEXCEPTION](http://www.luimoto.com/ggexception)

5B ALWAYS USE A FRESH/SHARP EXACTO BLADE. YOU WILL CUT SMOOTHER, CLEANER, AND SPEND LESS TIME SANDING. (SEE FIG. 5B)

5C SEAT DEPTH TIP - NOT ALL SEATS ARE VERY THICK IN DEPTH. THE FOAM COULD BE THINNER TOWARDS THE SIDES OR BACK OF THE SEAT. USING A NEEDLE CHECK HOW DEEP DOWN YOU CAN GO BEFORE HITTING THE SEAT PAN. (SEE FIG. 5C)

5D CENTERING TIP - SOME SEAT PANS WILL HAVE CENTER LINE FACTORY MARKINGS MOLDED INTO THE PLASTIC SEAT PAN. USE THIS TO FIND THE CENTER LINE OF YOUR SEAT.

THINGS TO CONSIDER

5E AFTER TRACING YOUR GEL ON THE FOAM. TO BE ON THE SAFE SIDE, CUT LESS THEN WHAT IS DRAWN DOWN BY 2mm (1/16") IT IS EASY TO REMOVE THE EXCESS FOAM LATER TO ENSURE A PERFECT FIT. (SEE FIG. 5E)

5F ONCE YOU HAVE SCORED YOUR GRIDLINES THROUGHOUT THE SEAT. TAKE YOUR MARKER AND RUN IT INSIDE OF YOUR CUT ALONG THE BOTTOM. THIS ENSURES YOU DO NOT CUT DEEPER THAN YOUR INK. IF YOU CUT AWAY ALL THE INK YOU KNOW YOU'VE CUT TOO DEEP.

FINISHING

5G USE 40 – 100 GRIT SANDPAPER TO WORK DOWN THE LAST MILLIMETER OF FOAM FOR THAT PERFECT FIT. ENSURE YOUR FOAM DITCH IS EVEN AND FLAT ACROSS.

5H SMOOTHING FOAM IS NOT ALWAYS A MUST. IF YOUR LUIMOTO SEAT COVER HAS DIAMOND STITCHING OR RIBBING. THE FOAM IN THOSE MODELS WILL ACT LIKE SMOOTHING FOAM TO HIDE YOUR GEL INSTALL. (SEE FIG. 5H)

5I AFTER SPRAY GLUING THE SMOOTHING FOAM, YOU CAN STRETCH IT OVER YOUR SEAT AND STAPLE IT. THIS ENSURES THE LINER WILL NOT SHIFT WHILE DOING YOUR SEAT COVER INSTALL. (SEE FIG.5I - EACH CIRCLED AREA HAS 1 STAPLE)

FOLLOW US

POST YOUR EXPERIENCE, CHECK OUT COOL BIKES AND UPDATES!

