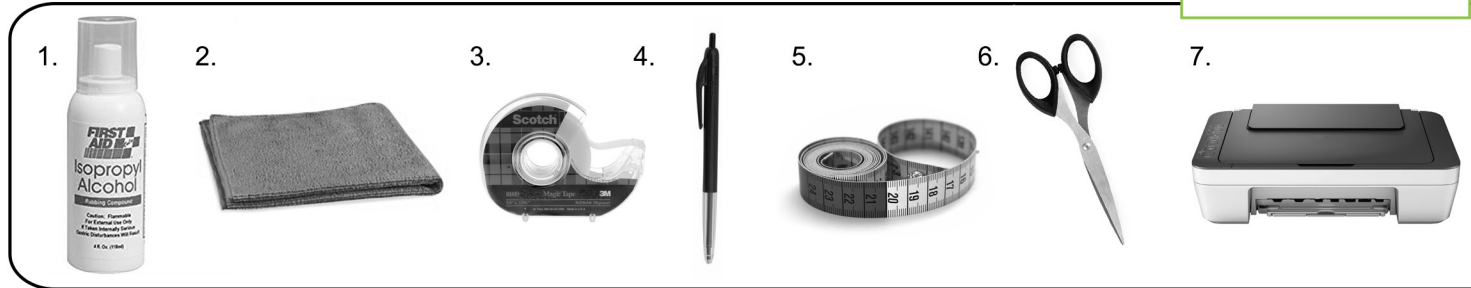




Thank you for purchasing Luimoto's premiere product "TANK LEAF."  
The highest quality Tank Grips in terms of both look and feel in the market today!

**TOOLS REQUIRED:**

1. **Isopropyl Alcohol**
2. Soft Lint Free Cloth
3. Regular Tape or Double Sided Tape
4. Pen
5. Tape Measurer
6. Scissor
7. Printer



## WATCH OUR INSTALLATION VIDEO!

[WWW.LUIMOTO.COM/VIDEOS](http://WWW.LUIMOTO.COM/VIDEOS)

*Typical Install duration: 1hr*  
*Take your time, follow this guide, and be patient!*

### START

**Step 1:**  
Print out this manual and read all the pages. Ensure it is printed at 100% ratio and not resized in anyway.

**Step 2:**  
In the following pages, take your scissor, cut along the outlines of the spacer squares and/or paper templates. (If applicable)

**Step 3: VERY IMPORTANT** 

**Spray Isopropyl alcohol onto a soft lint free cloth and clean all mounting surfaces on your motorcycle.**  
**Ensure the mounting surfaces are dry, free of debris for proper adhesion.**

**PRACTICE MOUNTING & TIPS!**

Our guides are simply for your reference. Everyone may have a different mounting position or preference.  
Before removing the 3M double sided tape, Practice positioning the Tank Leaf products on your bike. Ensure you get it at the right position.  
You may use some regular tape to test your tank leaf positioning. Use your tape, pen, tape measurer, spacer squares and templates to help guide you to ensure accurate positioning on your motorcycle.



**MOUNTING ON: GAS TANK**  
**TANK LEAF TYPE: KNEE GRIPS**

**PRE-BENDING**

In some cases, Tank leaf might be positioned over a curve. It would help to pre-bend the product by hand for ease of installation.

**SPACER SQUARES**

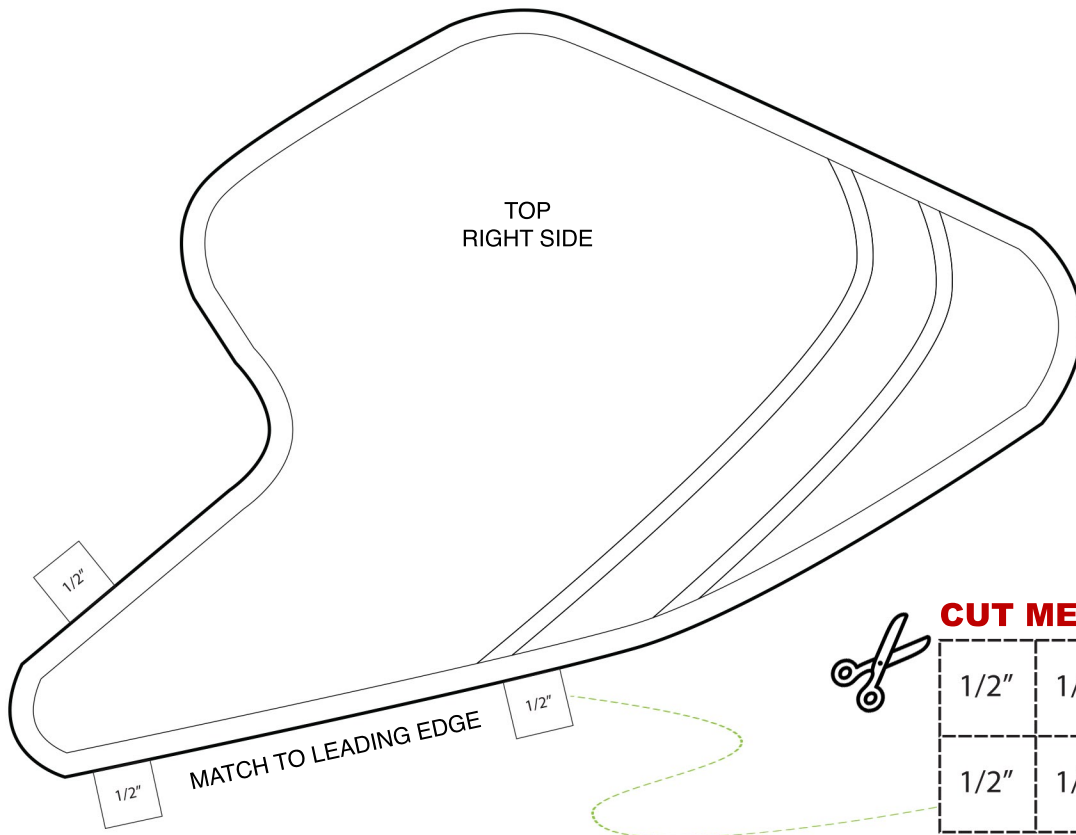
These squares allow you to position the Tank Leaf in the recommended area accurately. Cut them out, and tape them on the edges or lines of the bodywork if required by this instruction manual.

**MOUNTING:**

Carefully peel off the backing paper from the 3M double sided tape, line up the Tank Leaf to the edges of the spacer squares, and press down. Put firm pressure from the center and then out with your hands. Press firmly and continuously all around for 30 to 50 seconds. Repeat steps for the other side.



Example of Right Side



**CUT ME! SPACER SQUARES**

1/2"	1/2"	1/2"	1/2"	1/2"	1/2"	1/2"	1/2"	1/2"	1/2"	1/2"
1/2"	1/2"	1/2"	1/2"	1/2"	1/2"	1/2"	1/2"	1/2"	1/2"	1/2"



**MOUNTING ON: GAS TANK**  
**TANK LEAF TYPE: TANK PROTECTOR**



**IF YOU HAVE AN EXISTING TANK PROTECTOR TO REMOVE**

IF YOU HAVE AN EXISTING TANK PROTECTOR, HEAT IT UP WITH A BLOW DRYER, AND USING YOUR FINGERS, PRY IT OFF. SPRAY SURFACE WITH 3M RESIDUE REMOVER. FOLLOW THE MANUFACTURERS INSTRUCTIONS. WHEN SATISFIED, **FOLLOW UP WITH ANOTHER CLEAN UP WITH ISOPROPYL ALCOHOL TO REMOVE ANY REMAINING OIL AND RESIDUE. FAILURE TO DO SO, THE NEW TANK PROTECTOR WILL NOT STICK ON PROPERLY.**

**MEASURING THE CENTER POINT**

Take two pieces of tape and place it roughly where the bottom and top center points are. Take your tape measurer and using the lines of your bike, find out the center location for the top and bottom for your tank protector. Using a pen, draw a center line on the bottom tape and the top tape.

**PRE-POSITION**

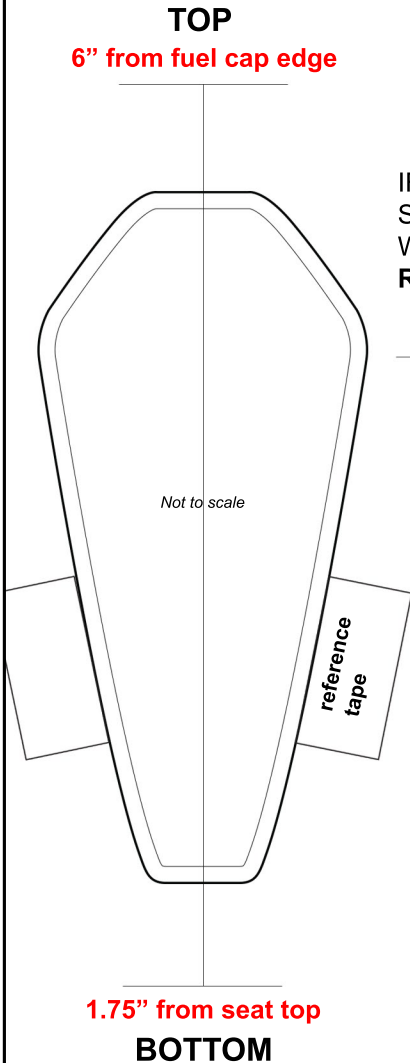
Pre-position your tank protector centered on your newly drawn center lines, does it look centered? If so, place a tape around 2" long on each side of the tank protector for extra reference points.

**PRE-BENDING**

In some cases, the tank protector might be positioned over a curve. It would help to pre-bend the product by hand for ease of installation.

**MOUNTING**

Carefully peel off the backing paper from the grey 3M double sided tape and press the Tank Protector down accurately and firmly in between the templates and any additional reference points. Press continuously everywhere for 30 to 50 seconds.



*Reference Photo Only*



**TANK LEAF REMOVAL** | Video: <http://www.luimoto.com/tankleaf-removal>

Do not use any sort of heat method as it will weaken the Tank Leaf internal structure. With a cold bike, start from an edge and pull the product off with firm steady force using only your finger tips.

To remove the adhesive tape left on the gas tank, **do not pull it up towards you** as it will break and take a long time to remove. With your fingers, simply pry up any corner, and pull it either up, down, left, or right **alongside the motorcycle** and repeat.

**DOUBLE SIDED TAPE REPLACEMENT**

You may purchase replacement 3M VHB double sided tape if needed.

Contact us at [sales@luimoto.com](mailto:sales@luimoto.com) with your model name, year, and which replacement tape side you require.

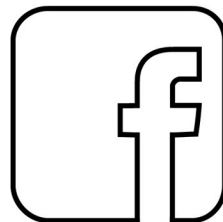
**WE HOPE YOU SINCERELY ENJOY YOUR TANK LEAF!**

**DON'T FORGET TO SHARE YOUR EXPERIENCE WITH US AND SEND US PHOTOS!**

**FOLLOW US**

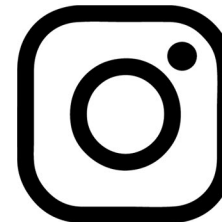
Post your experience, check out cool bikes and updates!

luimotoproducts



<https://www.facebook.com/luimotoproducts/>

@luimoto



<https://www.instagram.com/luimoto/>

*Product Disclaimer*

*Motorcycling is an inherently dangerous activity, which may result in personal injury and/or death. Luimoto's products are designed to offer a great cosmetic upgrade to your motorcycle. Modifying parts on your motorcycle may be against the law in your area. Please check your provincial/state law before using the product. Riders should always wear appropriate protective equipment when riding. Each individual rider should be familiar with the sport of motorcycling, recognize the wide range of foreseeable hazards and decide whether to assume the risks inherent in such activity. MOTORCYCLE RIDERS MUST BE FAMILIAR WITH THE CAPABILITIES AND LIMITATIONS OF THE MOTORCYCLE AND THE EQUIPMENT THEY ARE USING. Luimoto disclaims any responsibility for injuries incurred while using any of its products. In other words, use at your own risk.*