

B&M Fabrications

Ski Doo XM Chassis Running Boards

You will need basic cutting tools and drill bits for the install. The pictures shown here are a guideline on how to install them, you may have a different preference. Please preview entire directions before proceeding.

Note: Once the factory running board is cut off, clamp the new boards in place tight. You will want to double check all the rivet locations to make sure they line up with the tube! Failure to do so will result in a poor installation.

All rivets require a 3/16" Drill bit. There is 3 different rivets used.

1. Short rivet (Qty - 8)

2. Medium Rivet (Qty - 24)

3. Long Rivet (Qty - 4)

The traction screws supplied need a 1/8" hole drilled first. The screws will then self-tap into the tube. 50 screws are supplied for each side to install as desired.

Step 1. Remove the factory outer running board rail. You will have to drill out all rivets associated with the rail (3/16" drill bit) Rear suspension hanger rivets will need a 1/4" drill bit to remove existing rivets. Tip: Use a center punch to drive the center of the rivet in. This will aid in drilling.

Step 2. Refer to pictures.

Remember, take your time cutting and DOUBLE check these pictures! If you have any questions feel free to contact us!

Thanks again for your purchase!

B&M Fabrications LLC

1425 Ruth St.

St. Paul, MN 55119

612-202-9245

info@bmfabrications.com

Remove rivets marked in orange. Orange lines are the recommended cut. Use a center punch to remove the mandrel in the center of rivet before drilling (1/4")

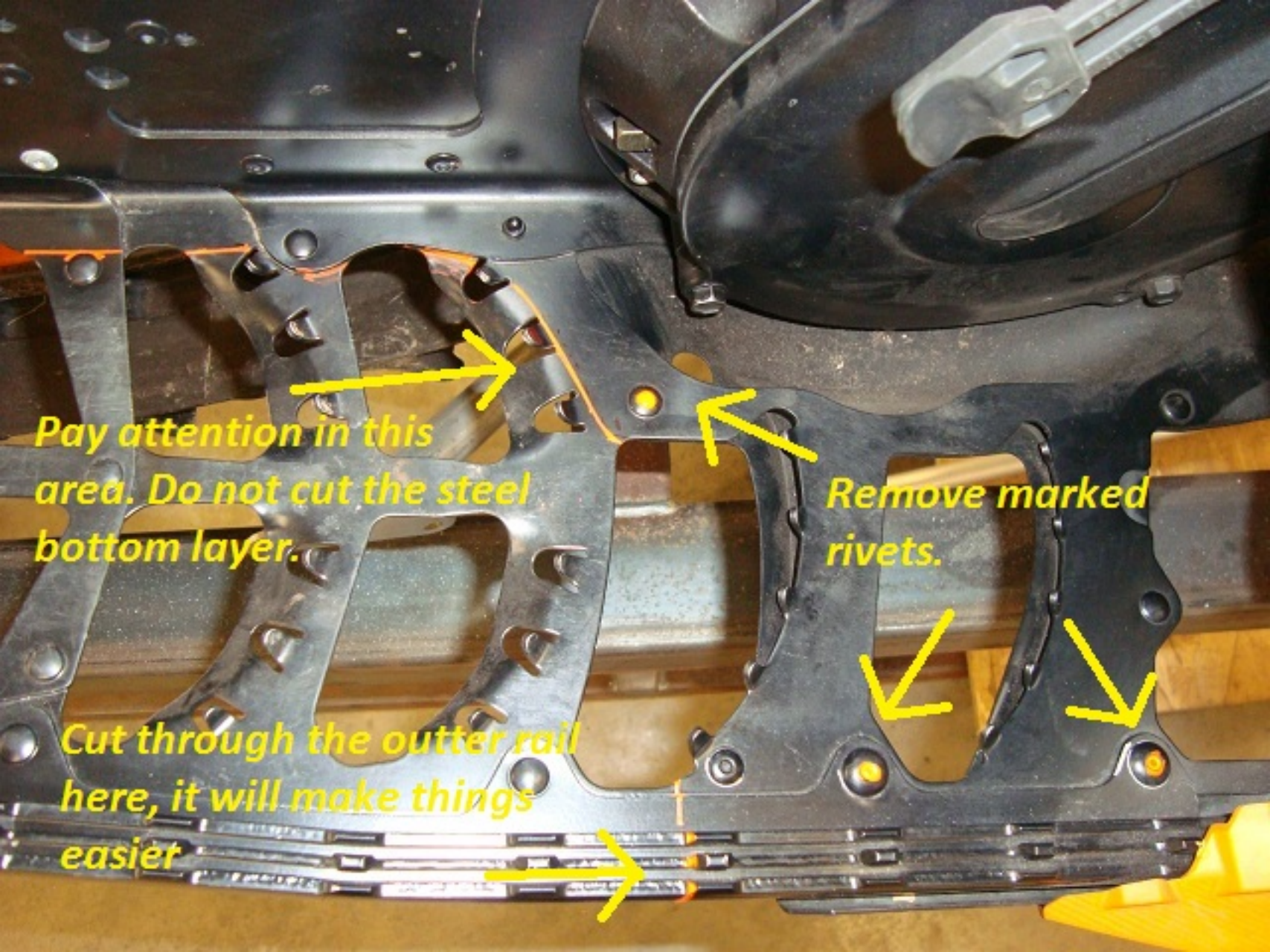




Cut lines are marked in orange.



Orange line is 11/16" from tunnel



Pay attention in this area. Do not cut the steel bottom layer.

Remove marked rivets.

Cut through the outer rail here, it will make things easier






Punching the mandrel out will save a lot of headaches drilling!






The orange mark is the recommended place to cut near the rear hanger. The rear portion marked in red may also be removed, your choice.



Here is a cut picture. Smooth out all your cuts and round the corners. Leave the lip marked here from cutting. Its needed for rivets!



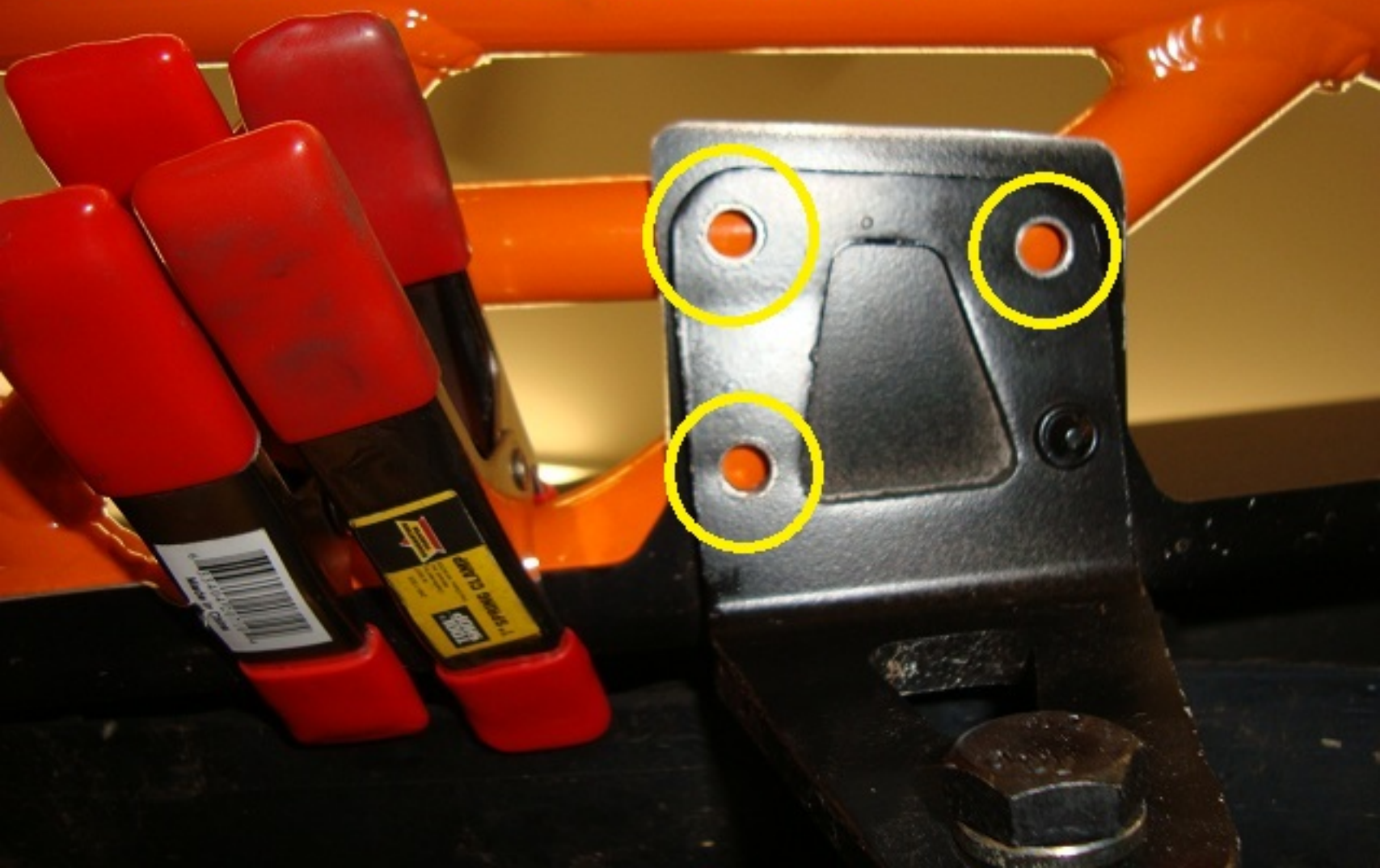
If you like, you may remove this marked portion of steel support for looks only. The choice is yours.



Grind this edge to a slight bevel. It will aid it allowing the board to sit correctly.



Ensure the board is clamped tightly to the tunnel and these existing rivet holes line up with the tubes.

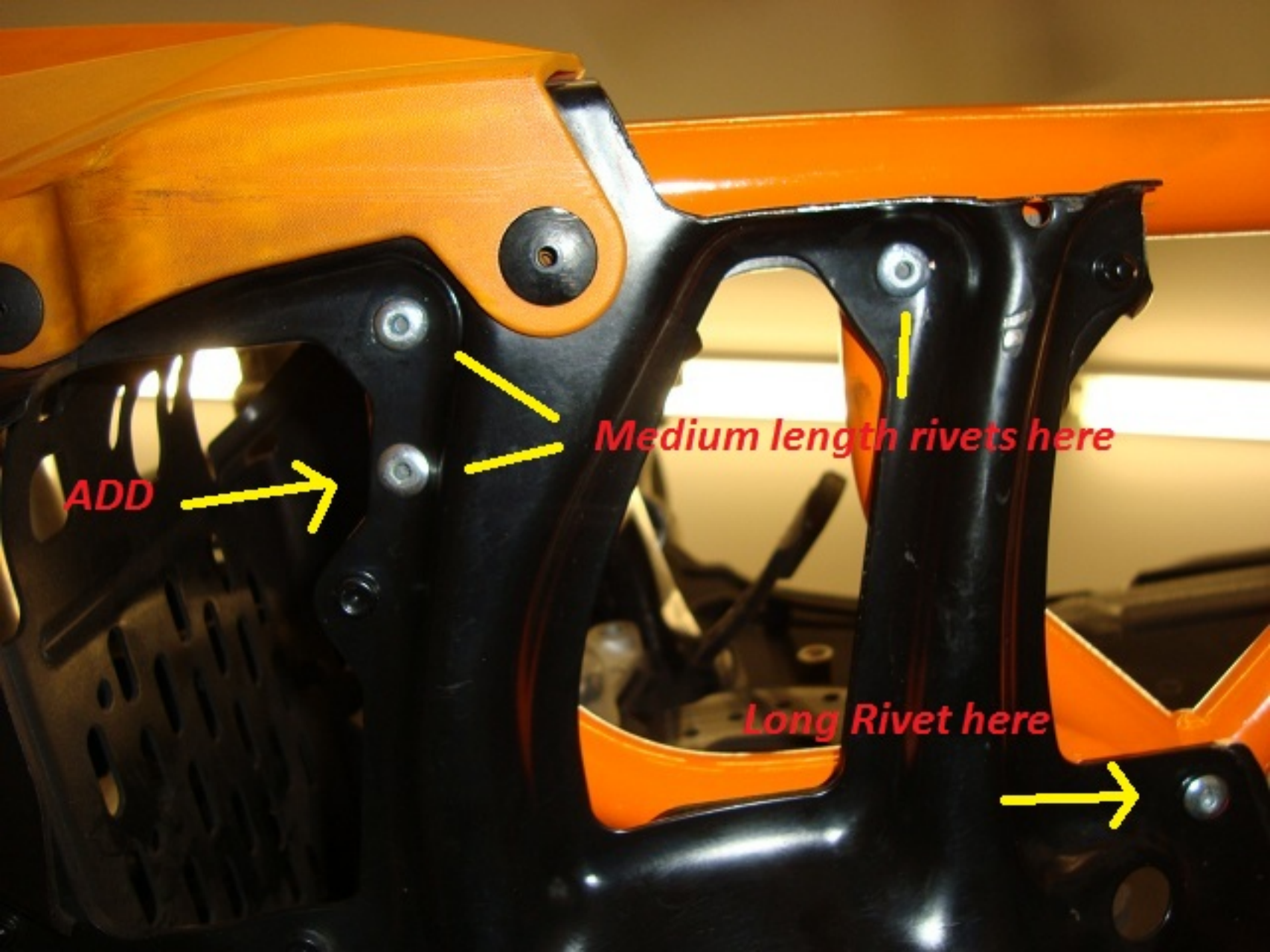




Tubes will line up in these locations as well



Clamp tightly to the tunnel and double check fitment at this time.



ADD



Medium length rivets here



Long Rivet here

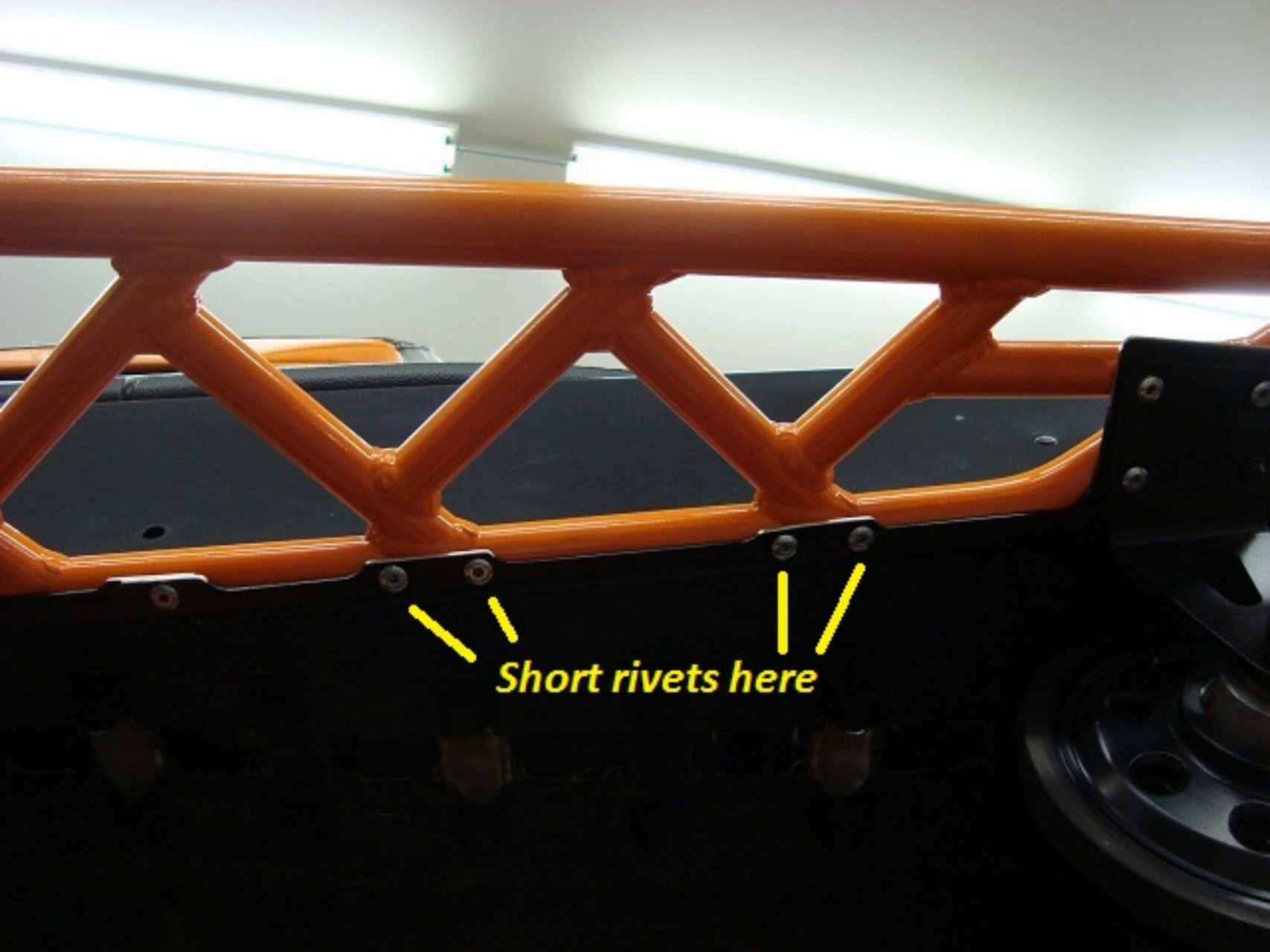


Medium length rivets



Long Rivet





Short rivets here



Medium length rivets here in these approximate locations

After riveting board in place locate and drill these 1/4" holes and install bolts from the inside out.





Traction screws are place every 2" on the outter rail. Inner tube locations are all approximate. Place where desired. 50 are supplied for each side. Drill 1/8" pilot hole then screw in. Enjoy your new Burly Boards!!