



Thank you for your purchase of our 2023+ Lynx rear bumper.

Please read instructions and view pictures entirely before installation.

Here is what is included with the bumper:

Lynx 3900 154" Track	Lynx 4100 165" Track
28 – Short Rivet	34 – Short Rivet
6 – Large Head Rivets	6 – Large Head Rivets
28 – Rivet Washers	34 – Rivet Washers
4 – ¼-20 x 5/8" Button Head Capscrew	4 – ¼-20 x 5/8" Button Head Capscrew
4 – ¼-20 x ¾" Button Head Capscrew	4 – ¼-20 x ¾" Button Head Capscrew
8 – ¼-20 Flanged Nylock Nut	8 – ¼-20 Flanged Nylock Nut

1. We recommend removing the snow flap from tunnel to aid in removing the rear most rivet from factory tunnel plates. It is hidden under the side of snow flap. These rivets may be drilled out with a 3/16" drill bit.

Tip: When removing the factory rivets from tunnel plate sides, we will use a 3/16" drill bit until contact with the mandrel (center of rivet) is made. Then use either a punch with hammer or air hammer (very carefully) to punch out the mandrel. You may have to hold a wood block on inside of tunnel against the rivet when using a hammer. This will prevent bending of tunnel side. Use this method with caution. Hitting the mandrel of rivet through will make the remaining drilling easy.

2. Remove all rivets holding the factory side plates on. There are two large rivets located on the front of the plates that will require hitting the mandrel and drilling from the inside of the tunnel with a ¼" drill bit. Remove and discard factory plates, make sure all rivet holes in tunnel are clear.

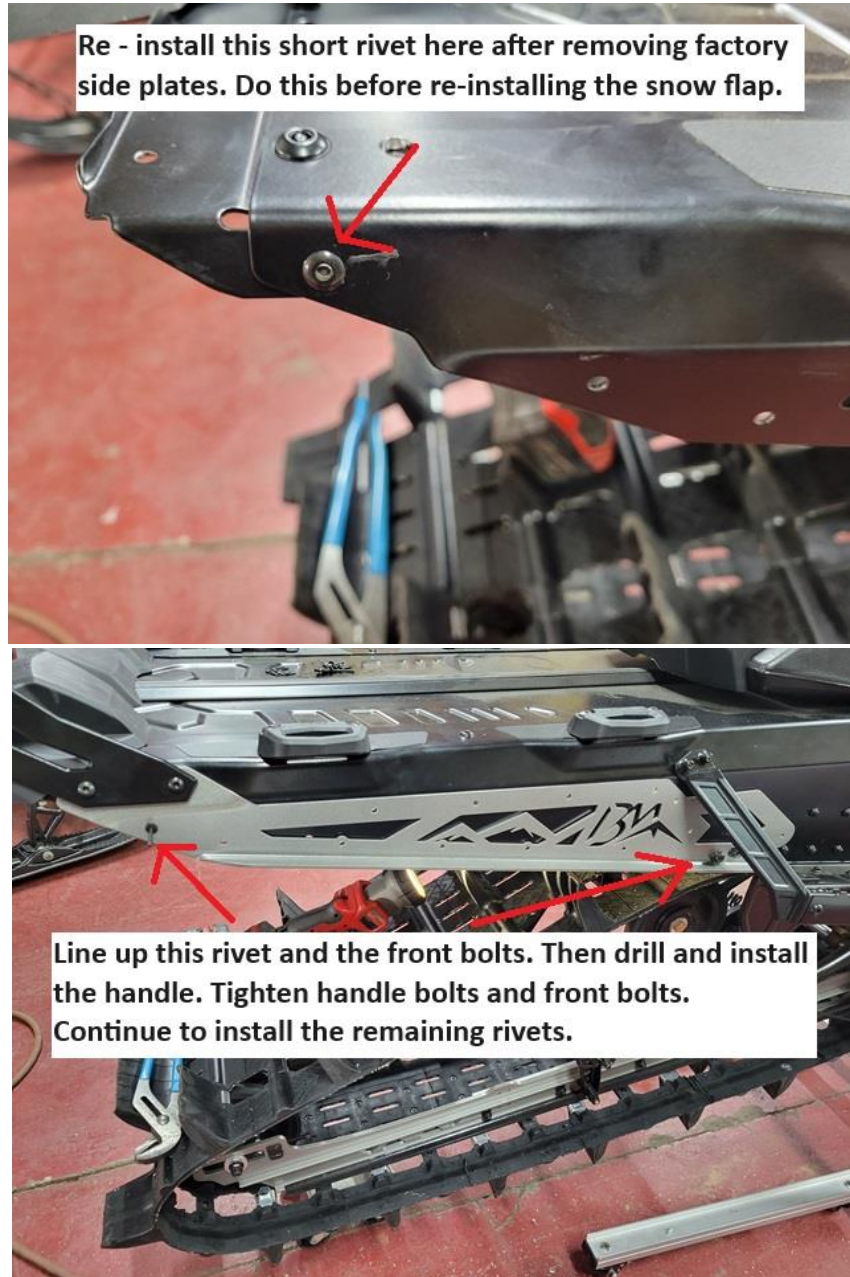
3. Install the rear most rivet using a standard short rivet with a rivet washer on the inside of tunnel. This was the rivet hidden by the snowflap. You may now re-install the snow flap (if removed) with the supplied 6 large head rivets.

4. Installing B&M side plates. Set each side plate on their perspective side (bent flange facing out). The ¼" holes in front of bumper will line up with the factory holes from the ¼" rivets. Use the 5/8" long button head bolts supplied. Install with bolt head on the INSIDE of tunnel and flanged nut on the OUTSIDE. Do not fully tighten bolts yet.

5. Install a rear short rivet into bumper to align all the rivet holes in the tunnel. Use a rivet washer on the inside of tunnel on all short rivets. Tighten the previously installed 5/8" long bolts at this time.

6. Use a ¼" drill bit and drill the tunnel where the handle will bolt up. The ¼" holes are already in the bumper side plates. Install handle with the ¾" long button head bolts supplied. The bolt heads may be placed on the OUTSIDE of sled with the nut on the inside of tunnel. Tighten hardware.

7. Install the rest of the short rivets into bumper. You may have to clearance some holes with a 3/16" drill bit before installing rivets. Make sure to use rivet washers on the inside of tunnel during installation of short rivets.



Any questions or concerns please call or email us!

B&M Fabrications

612-202-9245

info@bmfabrications.com

www.bmfabrications.com