

B&M Fabrications

Polaris IQR Chassis Running Boards

You will need basic cutting tools and drill bits for the install. The pictures shown here are a guideline on how to install them, you may have a different preference. Please preview entire directions before proceeding.

Note: Once the factory running board is cut off, clamp the new boards in place tight. You will want to double check all the rivet locations to make sure they line up with the tube! Failure to do so will result in a poor installation.

All rivets require a 3/16" Drill bit. There is 3 different rivets used.

1. Short rivet (Qty - 24)
2. Long Rivet (Qty - 8)
3. Large Head Rivet (Qty - 12) Used anywhere the plastics were removed.

The traction screws supplied need a 1/8" hole drilled first. The screws will then self-tap into the tube. 50 screws are supplied for each side to install as desired.

Thanks again for your purchase!

B&M Fabrications LLC

1425 Ruth St.

St. Paul, MN 55119

612-202-9245

info@bmfabrications.com



Remove all rivets circled here on both sides.

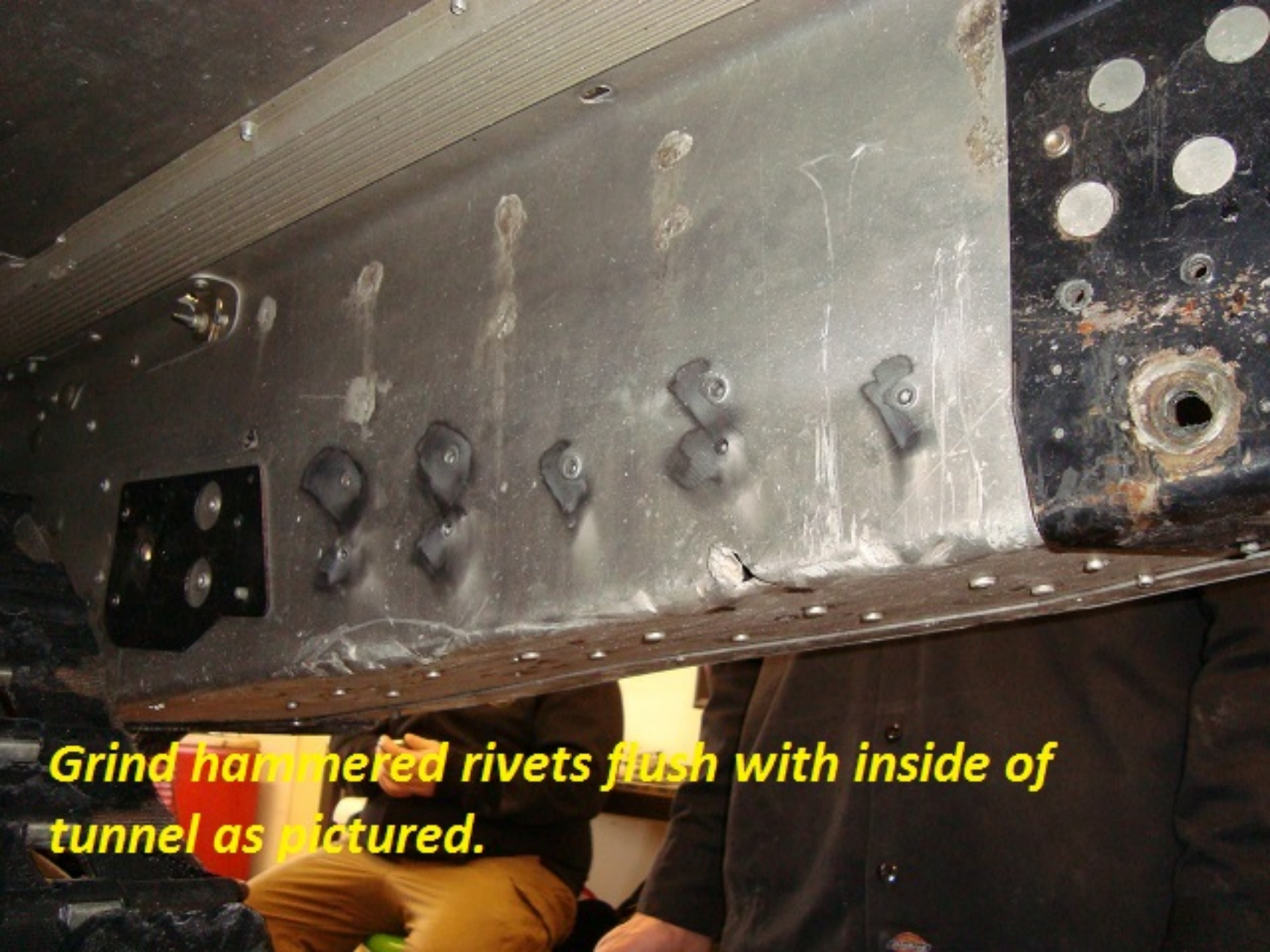


Remove these 4 rivets on each side





Remove factory tunnel gusset. Drill out standard rivets. Hammered rivets must be ground from back side.

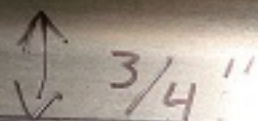


Grind hammered rivets flush with inside of tunnel as pictured.





**Mark boards to be cut. Make sure to cut
AROUND the factory rear hanger pictured**


A hand-drawn measurement mark on a metal surface. It consists of a vertical double-headed arrow with the text "3/4''" written to its right. The arrow indicates a distance of three-quarters of an inch from the top edge of the metal to a horizontal line drawn across it.

3/4''

Mark 3/4" out of side of tunnel all the way down the tunnel

Trim the inside edge as a radius. No sharp corners.

RADIUS



Cut this tube of flush.





CUT AROUND
BRACKET



Should look like this when cut. Clean all sharp corners.

CUT AROUND
BRACKET -1










Clamp board tightly in place making sure it is all the way forward.





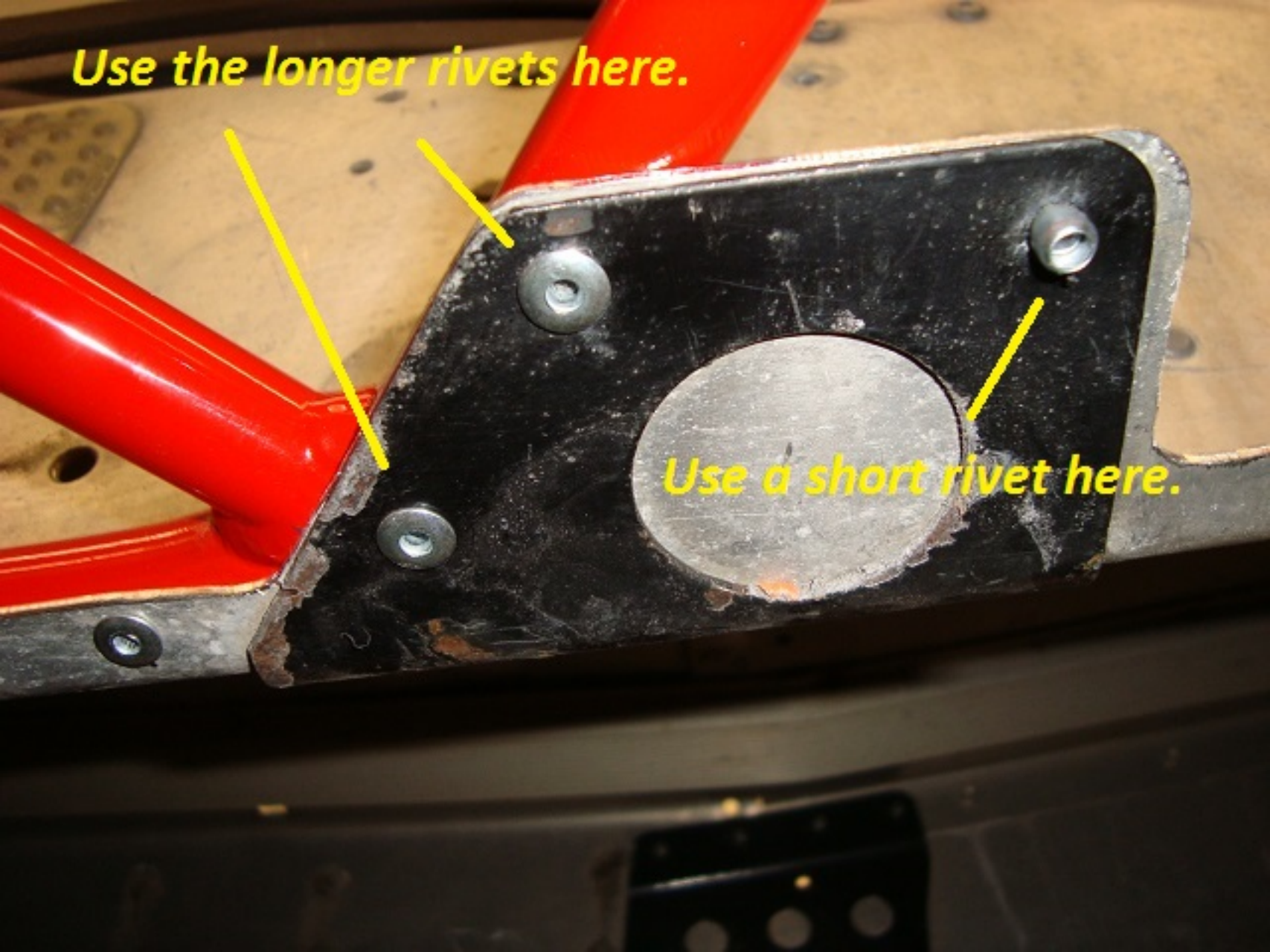
Mark rivet locations every 2.5" along bottom of tunnel.



A close-up photograph of a metal plate with a red frame. The plate has a hole at the top and another at the bottom. Handwritten text on the plate reads "CUT AROUND BRACKET". There are also some faint lines and a small mark on the plate.

CUT AROUND
BRACKET

Use the longer rivets here.

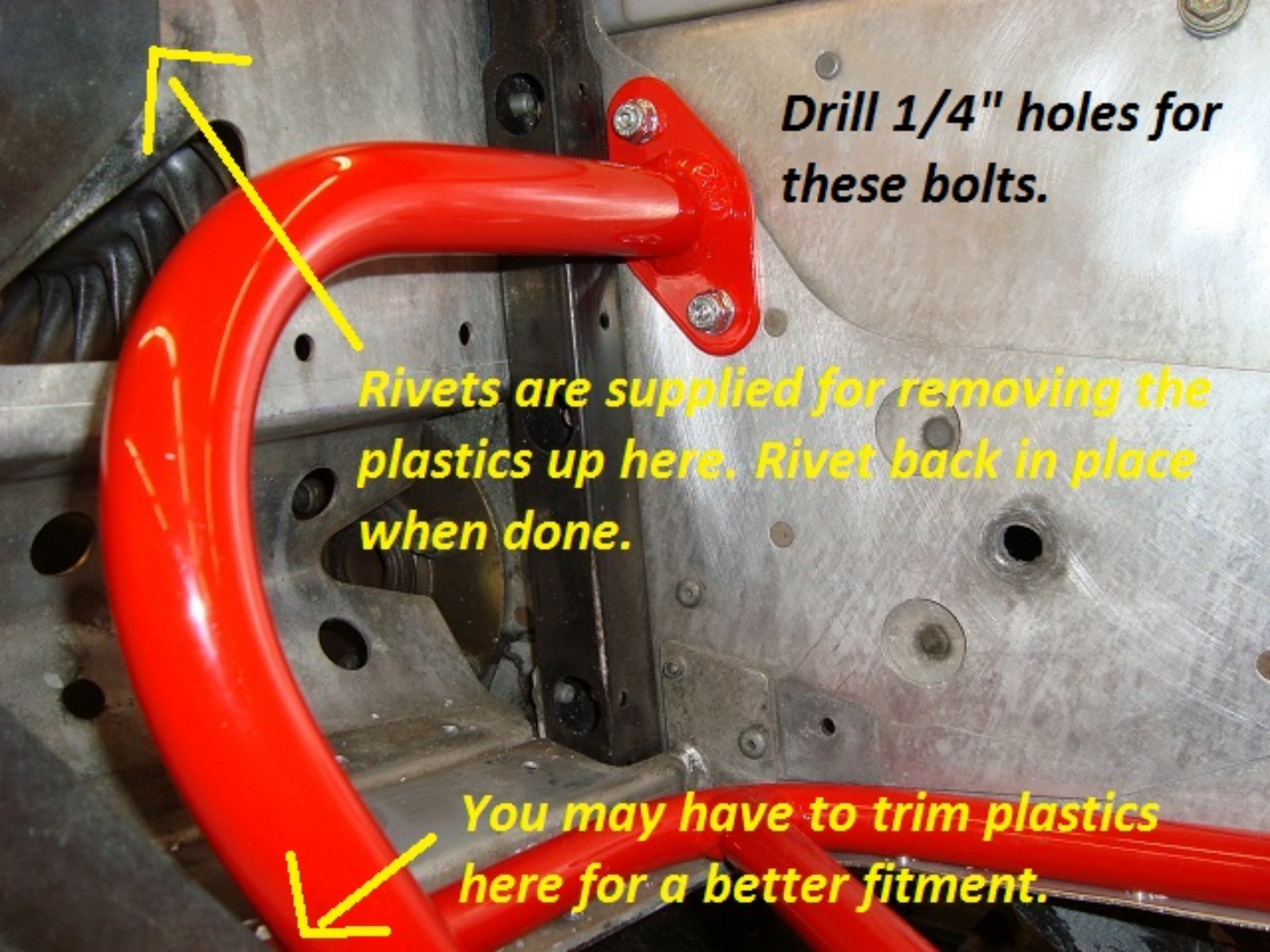


Use a short rivet here.



Use short rivets along the bottom where the tunnel is only one layer of metal.





Drill 1/4" holes for these bolts.

Rivets are supplied for removing the plastics up here. Rivet back in place when done.

You may have to trim plastics here for a better fitment.

Drill 1/4" holes for the rear bolts here.



Place tape along board to prevent chips from entering crack. These screws are spaced 2.5" apart on the outer tube. Use a 1/8" bit to pre drill holes. Screw preference is up to you.



