

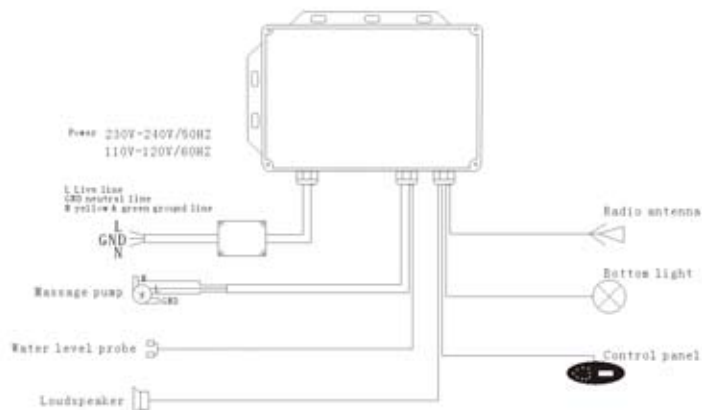
An aerial, black and white photograph of a road with a white wavy line curving across the frame. The road surface shows lane markings and a white wavy line that separates the road from a lighter-colored area below. The top right corner shows a portion of a road sign.

**ARIEL**

**AM113\119\121\124\125\128\134\505JDTS、TS-1、  
CL、CW、CW1、CT Installation Instruction**

## Wire connection diagram for massage bathtubs

CL, CW1 luxurious bathtub wire connection diagram

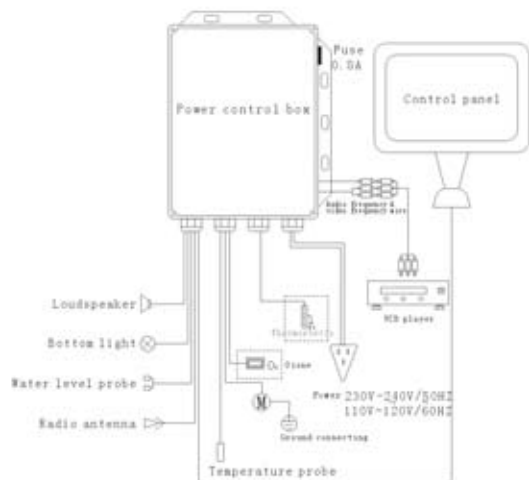


Electric parameter

Spare part	Massage pump	Ozone machine	Bottom light	Thermostat	Interception wire	PC control panel	Loudspeaker	Notes
Rate voltage	AC220-240V/50HZ		DC12V			AC220V/50HZ		
Rate voltage	AC110-120V/60HZ		DC12V			AC120V/60HZ		
Rate power	1125W		3W				15W	

## Wire connection diagram for massage bathtubs

CT luxurious bathtub wire connection diagram



Electric parameter

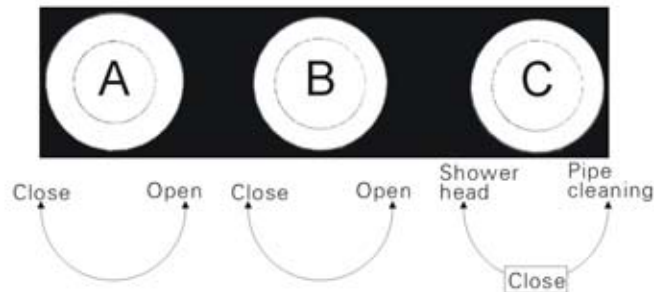
Spare part	Massage pump	Ozone machine	Bottom light	Thermostat	Thermoprobe wire	PC control panel	Loudspeaker	Notes
Rate voltage	AC220-240V/50HZ	AC12V	DC12V	AC220V/50HZ		AC220V/50HZ		
Rate voltage	AC110-120V/60HZ	AC12V	DC12V	AC120V/60HZ		AC120V/60HZ		
Rate power	1500W	5W	3W	1500W			15W	

## Optional

### 1、Bathtub faucet

Three sets of the faucet:

- A、The water-in pipe where with red label is hot water, and the hand-hold faucet with label H is also hot water. Turning left could alternate the volume of the hot water. The maximum is 90°C to the left.
- B、The water-in pipe where with blue label is cool water, and the hand-hold faucet with label C is also cool water. Turning left could alternate the volume of the cool water. The maximum is 90°C to the left.
- C、Function conversion value, Turn 90 °C left is the shower head while 90 °C right is the pipe cleaning function.



### 2、Water pressure massage

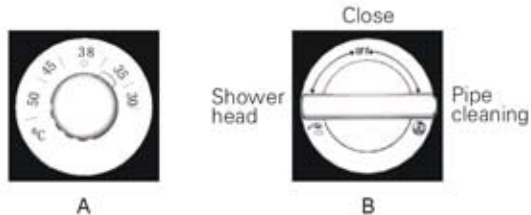
The effect of the water pressure massage is control by the pressure of water and air loop. It is control by the control panel. The control methods please see to the instructions of control panel.

## Faucet' s usage instruction

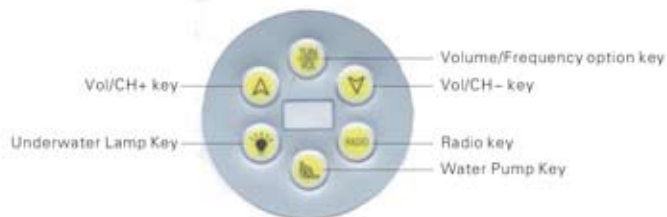
### Spare parts

#### 1、Bathtub faucet

- A、The thermostatic faucet is for both cold and hot water in. In the inlet pipe, the side with red label is for hot water while blue is for cold water. You can adjust the temperature according to the temperature mark in the faucet.
- B、B is the function conversion. Turn 90 °C left is the pipe cleaning function while 90 °C right is the shower head.



## CW Control panel usage instruction



### 1、Vol/CH+ key

When the radio is on, press this key to increase the volume when the icon display, hold it for more than 1 second, the volume will be increased automatically till you release the key or the volume reach the Max, press this key to increase the frequency when the icon display, hold it for more than 1 second, the frequency will be increased automatically till one channel be found, and the frequency range from 87.5MHZ to 108MHZ.

### 2、Underwater Lamp Key

Press this key to turn on/off the underwater lamp, press once, red light on, twice, red-green light on, press the third time, green light on, press the fourth time, green-blue light on, press the fifth time, blue light on, press the sixth time, blue-red light on, press the seventh time, all the color become circulation with an interval of 2 seconds, when press the key eighth time, the underwater lamp is turned off.

### 3、Volume/Frequency option key

This key for repeat used, when radio is on, you can press TUN/VOL to make an option between frequency and volume, when you press the key, the icon 1 or 2 icon will show out. The icon 1 mean you can adjust the volume of the radio and the icon 2 mean you can adjust the frequency of the radio.

80

Picture 1

### 4、Vol/CH- key

When the radio is on, press this key to decrease the volume when the icon display, hold it for more than 1 second, the volume will be decreased automatically till you release the key or the volume reach the Min, press this key to decrease the frequency when the icon display, hold it for more than 1 second, the frequency will be decreased automatically till one channel be found. The frequency range from 87.5MHZ to 108MHZ.

### 5、Radio key

Press radio key on/off to turn on/off the radio. (As illustrated Picture 2)

188.8 MHz

Picture 2

### 6、Water Pump Key

Press this key to turn on/off the water pump when the system is on, and it will automatically check the water level, if there is no enough water in the tub, the water pump will deny running. When the pump is on, the frame of the key will shining. Press the key again will shut the pump down. If the water lever goes lower than the sensor in the use of the bathtub, the pump will shut down automatically and the whole key will shin. The pump will refuse to restart before the water lever become normal.

drawing 3

## CL、CW1 Control panel usage instruction



### 1、on/off key

The control system will be on once you press the on/off key, press the key again will shut down the system. By default setting, the system will shut down automatically after 60 minutes running.

(As illustrated Picture 1)

### 2、Radio channel saving key

Press this key less than 1 second will select the channel saving on it. Press one more time can reset the channel. Press the key for more than 1 second the current channel frequency will be saved in this position.(As illustrated Picture 2)

### 3、CH+key

When radio is on press the key will enter the frequency sourcing state, press this key again to increase the frequency, hold on for more than 1 second, it will be increased automatically until one channel is found finally, or reaching 108MHZ.maximum.

### 4、CH-key

When radio is on, press the key will enter the frequency sourcing state, press this key again to decrease the frequency, hold on for more than 1 second, it will be decreased automatically until one channel is found finally, or reaching 87.5MHZ minimum.

### 5、Underwater lamp key

Press this key to turn on/off the underwater lamp, press once, red light on, twice, red-green light on, third, green light on, fourth, green-blue light on, fifth, blue light on, sixth, blue-red light on, seventh, all the color become circulation with an interval of 2 seconds. The sequence of the lights are red, red-green, green, green-blue, blue, blue-red. The eighth time press will turn off the underwater lamp.

### 6、Water pump key

Press this key to turn on/off the water pump when the system is on, and it will automatically check the water level, if there is no enough water in the tub, the water pump will deny running. When the pump is on the frame of the key will shining. Press the key again will shut the pump down. If the water lever goes lower than the sensor in the use of the bathtub, the pump will shut down automatically and the whole key will shin. The pump will refuse to restart before the water lever become normal.

(As illustrated Picture 3)

### 7、Volume + key

When the radio is on, press the VOL+ and the icon will display, press VOL+ again, the volume will be increased automatically, hold it for more than 1 second, the volume will increase quickly till you release the key or the volume reach the max.

### 8、Radio key

Press Radio key on/off to turn on/off the radio.(As illustrated Picture 4)

### 9、Volume - key

When the radio is on, press the VOL- and the icon will display, press VOL- again, the volume will be decreased automatically, hold it for more than 1 second, the volume will decrease quickly till you release the key or the volume reach the min.

Picture 1

Picture 2

Picture 3

Picture 4



## CONTENTS

01-02	AM113Components Structure
03-04	AM119Components Structure
05-06	AM121Components Structure
07-08	AM124Components Structure
09-10	AM125Components Structure
11-12	AM128Components Structure
13-14	AM134Components Structure
15-16	AM505Components Structure
17	AM113Right skirt water and wire line instruction diagram
18	AM119Right skirt water and wire line instruction diagram
19	AM121Water and wire line instruction diagram
20	AM124Left skirt water and wire line instruction diagram
21	AM125Water and wire line instruction diagram
22	AM128Water and wire line instruction diagram
23	AM134Water and wire line instruction diagram
24	AM505Water and wire line instruction diagram
25	Connection diagram of the faucet's pipe
26	Installation Step
27-30	Wire connection diagram for massage bathtub
31-32	Faucet's usage instruction
33-34	TS、TS-1 Control panel usage instruction
35	CL、CW1 Control panel usage instruction
36	CW Control panel usage instruction
37-43	CT Control panel usage instruction
44	Troubleshooting Instructions



## Safety Information

1. Please read carefully and follow all instructions when operating.
2. An earth leakage circuit-breaker must be installed and please carefully check it before use.
3. To avoid electric shock, the replacing of the wire must be done by the electrical engineer or the retailer. You could not alternate just by yourself. The wire for CT, TS series shall be  $3 \times 1.5$  square mm; The wire for TS-1, CL, CW and CW1 series shall be  $3 \times 1.0$  square mm.
4. A grounding wire connector is provided on this unit to connect with the surface of water pump and air pump. The minimum of the solid copper must be 1.5 square mm.
5. Forbid modifying and eliminating the product.
6. Please don't use this product after alcohol or drugs.
7. The children user shall be closely supervised by parents.
8. All the electrical spare parts except the remote control must be put stable to avoid slip into the tub.
9. Warning: the water temperature shall never exceed 60 degree centigrade.
10. Using strong causticity chemical liquid to cleaning the product, such as vitriol, hydrochloric acid, lye and so on is forbidden.
11. The pumping machine would be very hot when and after running, to avoid scald, please don't touch the surface of the pumping machine.
12. The water level must be higher than the jet before turning the product on.
13. No dropping things into the connection point of the pump and the power machine.
14. Warning: Avoid electrical shock, the GFCI/RCD (Earth Leakage Circuit Breaker) must be installed.
15. Warning: Avoid electrical shock, not allow using extended wire. The socket used should be positioned near the products.

## Maintenance instruction

### 1. The cleaning of the acrylic surface:

For the daily maintenance you could just use the sponge and water. If there are scratches appear in the surface, please use the 1500 waterproof abrasive paper to polish the surface. Then use toothpaste to polish again. You could also use the dirt cleaning machine for help. However, you could not use strong causticity chemical liquid to cleaning the product, such as vitriol, hydrochloric acid, lye and so on.

### 2. Electroplate cleaning:

Please use the soft cloth for cleaning. Please don't use the rough cloth.

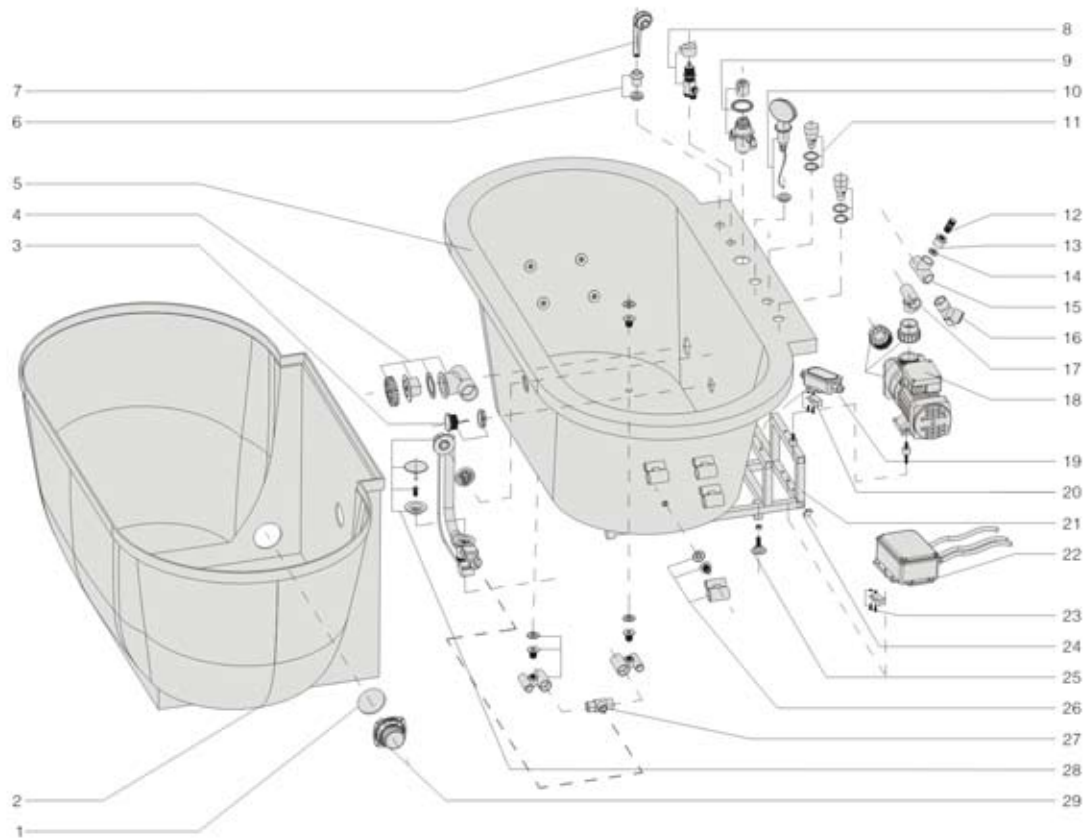
### 3. Suction net cleaning:

Turn the screw out and take the suction net out, Clean it to keep the water going through smoothly. Not use strong causticity chemical liquid to cleaning the product, such as vitriol, hydrochloric acid, lye and so on.

## AM128 Components Structure

1.The loudspeaker net	2.Skirt panel	3.Bottom light	4.Plastic suction	5.Bathtub body
				
6.Water proof shower pedestal	7.Shower head	8.7091-2 Main body	9.Thermostatic faucet	10.PC controller
				
11.chrome plated plastic adjustable switch	12.4 cm conversion	13.fitting nut	14.One way plastic stuff	15.1 inches three way conversion
				
16.1 inch three way conversion	17.A07 lengthened plastic	18.Water pump	19.Plastic box for income wire	20.Clip for PC panel
				
21.Stainless still bracket	22.PC board	23.4X16 tapping screw	24.Plastic stopper for the stainless steel shelf	25.Bathtub leg
				
26.Back jet	27.male tee for bottom drainage (New style)	28.Plastic drainage	29.Loudspeaker	
				

## AM128 Components Structure



The product use standard accessories. Please refer to production tech parameter and follow the below steps for installation:

**1. Confirm the direction for the product**→**2. Adjust the product for horizontal**→**3. Connect the water-in and water drainage**→**4. Connect the power**→**5. Check and confirm**→**6. Reposition**→**7. Pour water and test**

### 1、 Confirm the installation site for the product

Please see to the product technique diagram and related tech parameter to connect the water drain pipe, power socket, water-in pipe. Confirm if there is enough space for the connecting.

### 2、 Adjust the product for horizontal

Adjust the adjustable leg of the product; turn it into horizontal level.

### 3、 Connect the water-in and water drainage

The water out pipe lays in the bottom of the bathtub, with diameter 38 mm. the pipe could be elbow in whatever way you like. Please put the pipe into the water drainage system and seal it well. Please keep the pipe running through to avoid water exhausted.

### 4、 The Power Connection

This item is adjustable by the required power; please refer to the technique parameter for the direction of the power socket. Pay attention to the water-proof; connect the connector plugs into the socket. (Noted: the yellow-green bi-color wire from the water pump is the ground line, the diameter is 8 mm).

### 5、 Check and confirm

After the above steps, please check the connection points are sealed or not. Clean the dirty things in the bathtub and open the water drainage. Wash the bathtub by water. In order not to stuff the water drainage and jets, please do clean the dirty things before washing.

### 6、 Reposition

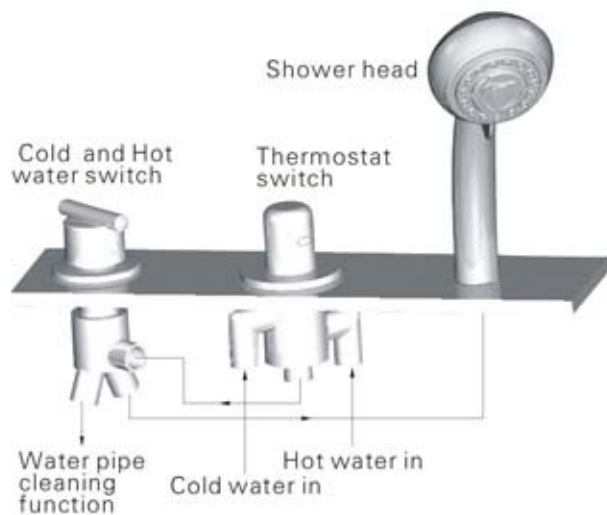
Reposition the product to where you want.

### 7、 Pour the water in, check and test before use

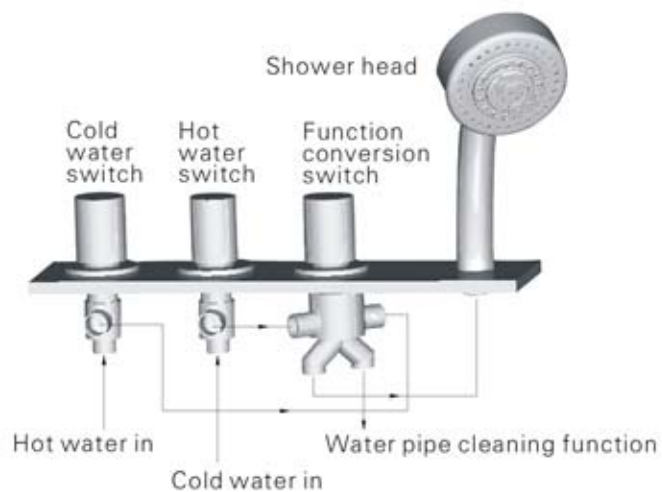
Confirm the bathtub is clean. Close the water drainage and start storing the water. When the water level is higher than the probe, turn on the bathtub and try the functions according to the control panel instruction.

## Connection diagram of the faucet's pipe

**Spare parts:**

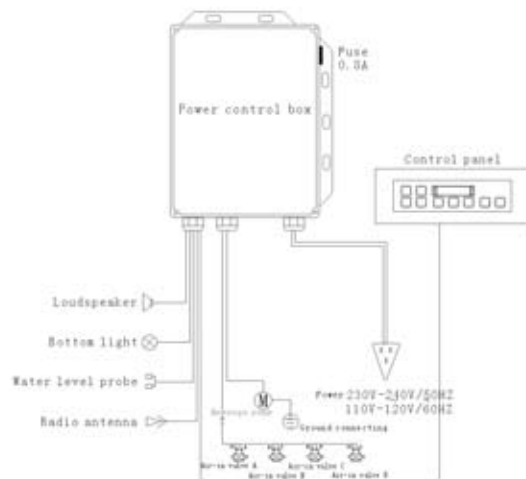


**Optional:**



## Wire connection diagram for massage bathtubs

TS-1 luxurious bathtub wire connection diagram

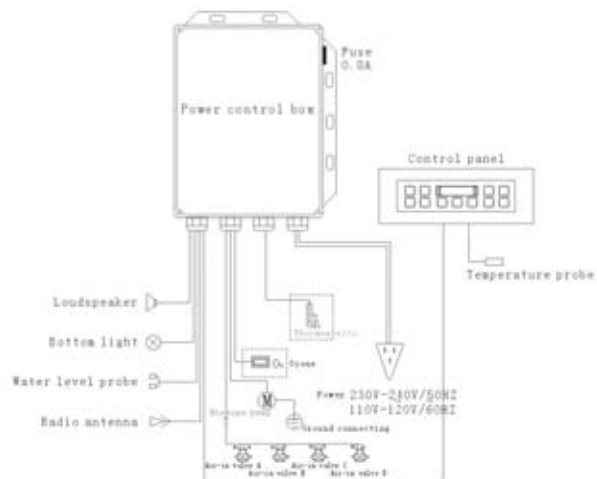


### Electric parameter

Spare part	Massage pump	Ozone machine	Bottom light	Thermostat	Electromagnetic valve	PC control panel	Loudspeaker	Notes
Rate voltage	AC220-240V/50HZ		DC12V		DC12V	AC220V/50HZ		
Rate voltage	AC110-120V/60HZ		DC12V		DC12V	AC120V/60HZ		
Rate power	1125W		3W		5W		15W	

## Wire connection diagram for massage bathtubs

TS luxurious bathtub wire connection diagram



### Electric parameter

Parameter	Message pump	Ozone machine	Bottom light	Thermostatic	Thermostatic valve	PC control panel	Loudspeaker	Notes
Rate voltage	AC220-240V/50HZ	AC12V	DC12V	AC220V/50HZ	DC12V	AC220V/50HZ		
Rate voltage	AC110-120V/60HZ	AC12V	DC12V	AC120V/60HZ	DC12V	AC120V/60HZ		
Rate power	1125W	5W	3W	1500W	5W		15W	