

Instruction Manual

Scissor Lift Pallet Truck

HLD1000/1500



Note: Owner/Operator must read and understand this instruction Manual before using the Scissor Lift Pallet Truck

INSTRUCTION

RAISE POSITION

Depress the lever #102 (103-1) and pump handle until pallet has reached the desired height. A clearance of 1" between floor and pallet is usually sufficient to move the load. Do not lift load with one fork extremity of forks.

NEUTRAL POSITION

The neutral position is found at about 45° between the raise and lower position. This neutral (drive) position disengages the lifting mechanism making the handle free from hydraulic resistance and becomes almost weightless, yet the forks retain their raised position. Always use the neutral position when moving a load.

LOWER POSITION

Pull the lever up to lower the forks. The lever is spring loaded for lowering only, therefore when you release the lever it will automatically return to the natural position.

WARNING

For safe operation of Hand Pallet Trucks. Please read the following instructions:

1. Do not operate a Hand Pallet Truck unless you are familiar with it and have been trained and authorized to do so. Read all warnings and instructions here and on the truck.
2. Do not operate a Hand Pallet Truck until you have checked its condition. Give special attention to the wheels, handle, forks, lifts and lower control, and brakes (if so equipped). Do not operate damaged or faulty trucks. Do not attempt repairs unless you are trained and authorized to do so.
3. Operate Hand Pallet Trucks only from the designated operating position. Never place any part of your body in the lifting mechanism or under the forks or load. Do not carry passengers.
4. Do not handle unstable or loosely stacked loads. Use special care when handling long, high or wide loads to avoid losing the load, striking bystanders, or tipping the truck.
5. Do not overload the truck. Check capacity plate for carrying capacity information. Overloading may cause truck to perform incorrectly.
6. The capacity of the truck assumes an evenly-distributed load with the center of the load being at the halfway point of the length of the forks.
7. Make sure that length of the forks match the length of the pallet. Using a pallet truck

where the forks are longer than the pallet will damage the truck of the pallet truck is pushed through the pallet and the forks are under a second pallet behind the one being lifted. When lowering the load, make sure the area where the pallet is to place is clear.

8. Observe traffic regulations. Yield right of way to pedestrians, Stop at cross aisles.

9. Hand Pallet Trucks are for general operation on level, flat hard surfaces. If ramps are encountered, the optional hand brake can be ordered, or the truck may be stopped in emergencies by operating the lowering control, which will lower load to the ground, stopping the truck. If the truck has to be stopped in this manner, care should be taken so that no part of your body is near or under the load. It is important not to operate a Hand Pallet Truck on a grade with loads that are too heavy to be easily handled by the operator. Since these are manually operated trucks, they are not to be used by operators that are not physically capable of safely handling the trucks with a load.

FAILURE TO FOLLOW THESE INSTRUCTIONS MAY CAUSE SERIOUS INJURY TO THE OPERATOR OR OTHERS.

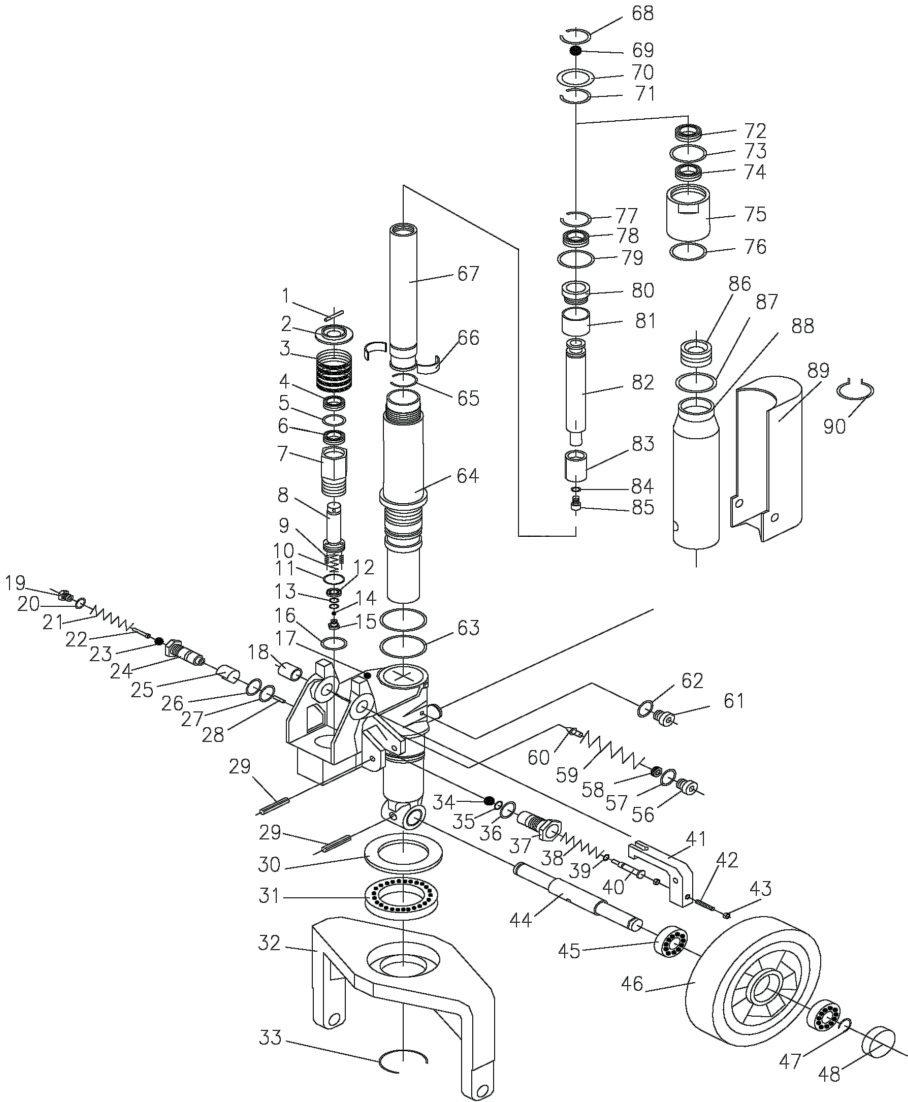
THREE-MONTH MAINTENANCE SCHEDULE

- 1) Check oil level
- 2) Lubrication-Joints, pins, axles, push rods, Steering Wheel's and Load Roller's Bearings with good molybdenum type grease.

ORDERING PARTS

HPTA pallet trucks are distributed through a sales organization that is eager and capable to service the equipment it has sold you. You will be well taken care of if whenever parts or repairs are needed you turn to the source from which you purchased your truck. When doing so "Please be sure to state Model No. and Serial No." of your truck and use part numbers and nomenclature as shown in parts listing giving in this poster. Adherence to the above procedure will save time and provide speedy assistance when it counts.

Pump parts details



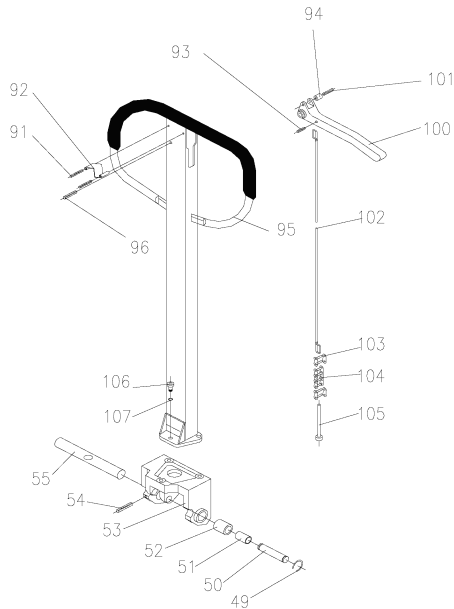
Pump parts details

| Item | Part No. | DESCRIPTION | QTY | Item | Part No. | DESCRIPTION | QTY |
|-------|----------|---------------------|-----|------|----------|---------------------|-----|
| 1 | 11010101 | PIN | 1 | 61 | 11010135 | SCREW | 2 |
| 2 | 11010102 | SPRING CAP | 1 | 62 | 11010136 | SPRING WASHER | 2 |
| 3 | 11010103 | SPRING | 1 | 63 | 11010137 | O-RING | 2 |
| 4 | 11010104 | DUST SEAL | 1 | 64 | 11010138 | BIG CYLINDER | 1 |
| 5 | 11010105 | BACK-UP RING | 1 | 65 | 11010139 | SNAP-RING | 1 |
| 6 | 11010106 | O-RING | 1 | 66 | 11010140 | COPPER WASHER | 1 |
| 7 | 11010107 | PUMP CYLINDER | 1 | 67 | 11010141 | LIFTING PISTON | 1 |
| 8 | 11010108 | PUMP PISTON | 1 | 68 | 11010142 | SNAP RING | 1 |
| 9 | 11010109 | SPRING & STEEL BALL | 2 | 69 | 11010143 | STEEL BALL | 1 |
| 10 | 11010110 | SPRING | 1 | 70 | 11010144 | WASHER | 1 |
| 11 | 11010111 | O-RING | 1 | 71 | 11010145 | SNAP RING | 1 |
| 12 | 11010112 | CAP | 1 | 72 | 11010146 | DUST SEAL | 1 |
| 13 | 11010113 | O-RING | 2 | 73 | 11010147 | O-RING | 1 |
| 14 | 11010114 | STEEL BALL | 1 | 74 | 11010148 | Y-RING | 1 |
| 15 | 11010115 | PLUG | 1 | 75 | 11010149 | CYLINDER HEAD | 1 |
| 16 | 11010116 | COPPER WASHER | 1 | 76 | 11010150 | O-RING | 1 |
| 17 | 11010117 | VALVE BODY | 1 | 77 | 11010151 | STEEL BALL | 1 |
| 18 | 11010118 | BUSHING | 1 | 78 | 11010152 | Y-RING | 1 |
| 19~28 | 11010119 | Check valve assy. | 1 | 79 | 11010153 | O-RING | 1 |
| 29 | 11010120 | SPRING PIN | 2 | 80 | 11010154 | BRONZE BUSHING | 1 |
| 30 | 11010121 | BEARING CAP | 1 | 81 | 11010155 | STEEL SLEEVE | 1 |
| 31 | 11010122 | BEARING | 1 | 82 | 11010156 | PISTON ROD | 1 |
| 32 | 11010123 | TABL R | 1 | 83 | 11010157 | PISTON | 1 |
| 33 | 11010124 | SNAP RING | 1 | 84 | 11010158 | SCREW | 1 |
| 34~40 | 11010125 | Relief valve assy. | 1 | 85 | 11010159 | SPRING WASHER | 1 |
| 41 | 11010126 | CAM | 1 | 86 | 11010160 | OIL BOX PLUG | 1 |
| 42 | 11010127 | SCREW | 1 | 87 | 11010161 | O-RING | 1 |
| 43 | 11010128 | NUT | 2 | 88 | 11010162 | OIL BOX | 1 |
| 44 | 11010129 | WHEEL SHAFT | 1 | 89 | 11010163 | OIL BOX CAP | 1 |
| 45 | 11010130 | BEARING | 4 | 90 | 11010164 | Circlip | 1 |
| 46 | 11010131 | WHEEL(RUBBER) | 2 | *** | 11010165 | Pump assy. for 1T | 1 |
| 47 | 11010132 | SNAP-RING | 2 | *** | 11010166 | Pump assy. for 1.5T | 1 |
| 48 | 11010133 | CAP (NYLON) | 2 | *** | 11010167 | Seal kits for 1T | 1 |
| 56~60 | 11010134 | Safety valve assy. | 1 | *** | 11010168 | Seal kits for 1.5T | 1 |

Remark:

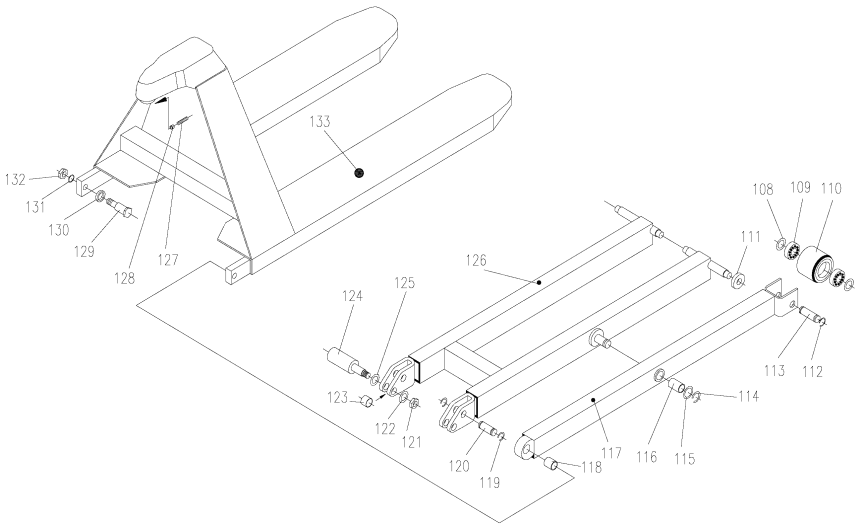
Items of pump parts for 1T and 1.5T are same, but some parts are different, so please inform us the parts for 1T or 1.5T models if you order the parts.

Handle parts details



| Item | Part No. | DESCRIPTION | QTY | Item | Part No. | DESCRIPTION | QTY |
|------|----------|--------------|-----|--------------|----------|---------------|-----|
| 49 | 11010201 | SNAP-RING | 2 | 95 | 11010212 | HANDLE | 1 |
| 50 | 11010202 | ROLLER PIN | 1 | 96 | 11010213 | SPRING PIN | 1 |
| 51 | 11010203 | BUSHING | 1 | 100 | 11010214 | LEVER | 1 |
| 52 | 11010204 | ROLLER | 1 | 101 | 11010215 | SPRING PIN | 1 |
| 53 | 11010205 | HANDLE STAND | 1 | 102 | 11010216 | BELEASE ROD | 1 |
| 54 | 11010206 | SPRING PIN | 1 | 103 | 11010217 | CHAIN JOINT | 2 |
| 55 | 11010207 | HANDLE PIN | 1 | 104 | 11010218 | CHAIN | 1 |
| 91 | 11010208 | PIN | 2 | 105 | 11010219 | BOLT | 1 |
| 92 | 11010209 | SPRING PLATE | 1 | 106 | 11010220 | BOLT | 3 |
| 93 | 11010210 | PIN | 1 | 107 | 11010221 | SPRING WASHER | 3 |
| 94 | 11010211 | NYLON ROLLER | 1 | ** 91~107 | 11010222 | Handle assy. | 1 |

Frame parts details



| Item | Part No. | DESCRIPTION | QTY | Item | Part No. | DESCRIPTION | QTY |
|------|----------|----------------------|-----|------|----------|------------------|-----|
| 108 | 11010301 | WASHER | 4 | 121 | 11010314 | NUT | 2 |
| 109 | 11010302 | BEARING | 4 | 122 | 11010315 | SPRING WASHER | 2 |
| 110 | 11010303 | LOAD WHEEL | 2 | 123 | 11010316 | SPACER | 2 |
| 111 | 11010304 | NYLON ROLLER | 4 | 124 | 11010317 | CENTRIFUGAL AXLE | 2 |
| 112 | 11010305 | SNAP RING | 4 | 125 | 11010318 | WASHER | 2 |
| 113 | 11010306 | LOAD WHEEL SHAFT | 2 | 126 | 11010319 | SCISSOR PROJECT | 1 |
| 114 | 11010307 | SNAP RING | 2 | 127 | 11010320 | SCREW | 1 |
| 115 | 11010308 | WASHER | 2 | 128 | 11010321 | V-NUT | 1 |
| 116 | 11010309 | SLEEVE | 2 | 129 | 11010322 | PIN | 2 |
| 117 | 11010310 | LEG (LFFT AND RIGHT) | 1 | 130 | 11010323 | SLEEVE | 2 |
| 118 | 11010311 | SLEEVE | 2 | 131 | 11010324 | SPRING WASHER | 2 |
| 119 | 11010312 | SNAP RING | 2 | 132 | 11010325 | NUT | 2 |
| 120 | 11010313 | PIN | 2 | 133 | 11010326 | FORK | 1 |