

HABA Pro

EDUCATION

FEEL-GOOD - WORLDS



COLOR AND FUNCTION COMBINED –
ROOM CONCEPTS FOR DAYCARE, CHILDCARE, PRESCHOOL, AND SCHOOL

DEAR PARTNER,

Every day, children and educational professionals spend a great deal of time in daycare, childcare, preschool, and school – living, learning, laughing, and working there. That’s why it’s all the more important that they can do this in an environment where they feel completely at ease. With HABA Pro we offer you the perfect solutions. For more than 80 years, we have been the experts in shaping the future of our children. We develop new room ideas, products, and concepts that enrich everyday life in educational facilities. Whether it’s child-friendly furniture in appealing colors, teaching and learning materials that promote development, or our innovative designs: Children and educators are always at the heart of what we do! Our mission is to promote the healthy development of children and support educators in their daily work.

Over the following pages, you will learn what HABA Pro stands for and what lies behind our work. We would also like to give you ideas on how to use color in educational facilities. That’s why we’ve created the three color inspirations Aqua, Terra, and Dune, which we’d like to introduce to you. Find out which colors work best in which room and how they can be ideally used.

We hope you enjoy discovering them!

ABOUT US

WHO WE ARE	4
VISION & MISSION	6

CONCEPTS
& DESIGN

OUR ROOM CONCEPTS	10
DESIGN	16
TEACHING & LEARNING MATERIALS	18
DESIGNING ROOMS WITH COLOR	22
COLOR CONCEPT AQUA	26
COLOR CONCEPT TERRA	28
COLOR CONCEPT DUNE	30


QUALITY &
SAFETY

OUR QUALITY	34
FIRE PREVENTION & SOUND INSULATION	36

ADVICE
& PLANNING

WORKING TOGETHER AND ADVISING YOU AS EQUALS	40
---	----





CHILDREN LOVE TO play with others, have fun, and go on adventures together. But it's also important to deal with conflicts. Children still have to learn to make compromises. If you can teach them how valuable teamwork and solidarity are, you will give them a skill for the rest of their lives.



FEELING OF TOGETHERNESS

This is the HABA FAMILYGROUP:

- **HABA FAMILYGROUP**
We are the family for families
habafamilygroup.com
- **HABA**
Inventors for children
haba-play.com
- **JAKO-O**
Just be a child
jakoo.com
- **HABA PRO**
For business and education
haba-pro.com
- **HABA DIGITALWERKSTATT**
Creative space for education and exploration
digitalwerkstatt.de

HABA Pro

WHO WE ARE

HABA PRO IS AN INTEGRAL PART OF A LARGE FAMILY OF COMPANIES – THE HABA FAMILYGROUP.

At the HABA FAMILYGROUP, we have been working for the best target group in the world for more than 80 years: children and their families. Cross-generational action, responsible use of resources, and the development of long-lasting products are core values for our family business. We always focus on the future competencies of children.

We firmly believe that children can do a lot on their own. With our products, we merely support them and promote their development, but never patronize them. We have followed this principle for many years and will continue to do so.

HABA Pro and the entire HABA FAMILYGROUP are driven by enthusiasm for value and design, the desire to bring joy, and ultimately a passion for children and families. Whether innovative design and furniture concepts or premium products – HABA Pro stands for individual solutions that create added value. Our products guarantee the highest level of quality, durability, and safety. Every one of our products is sustainable from the very beginning of its life cycle. In our production, we strive to continuously improve energy efficiency, environmental protection, and occupational safety. With our interdisciplinary team, we develop products that invite children to play and stimulate their imagination. We translate children's needs into beautifully designed

solutions and make the world more varied and nicer for children with age-appropriate toys and games.

Together we awaken children's enthusiasm, love of discovery, and curiosity. Driven by this motivation, we constantly reinterpret the topic of play in its various facets. With our combined expertise in creativity and play, furniture construction, and interior design, we develop everything from the first idea to the finished play area, from building blocks to large adventure play worlds, all from a single source.



Where tradition meets modernity.

HABA Pro

VISION & MISSION

MAKING CHILDREN FIT FOR THE FUTURE –
THIS IS WHERE WE ARE STRONG.



Where tradition meets modernity.

At the HABA FAMILYGROUP, we have been working for the best target group in the world for more than 80 years: children and their families. Cross-generational action, responsible use of resources, and the development of long-lasting products are core values for our family business. We always focus on the future competencies of children.

We firmly believe that children can do a lot on their own. With our products, we merely support them and promote their development, but never patronize them. We have followed this principle for many years and will continue to do so. HABA Pro and the entire HABA FAMILY -GROUP are driven by enthusiasm for value and design, the desire to bring joy, and ultimately a passion for children and families. Whether innovative design and furniture concepts or premium products – HABA Pro stands for individual solutions that create added value. Our products guarantee the highest level of quality, durability,

and safety. Every one of our products is sustainable from the very beginning of its life cycle. In our production, we strive to continuously improve energy efficiency, environmental protection, and occupational safety. With our interdisciplinary team, we develop products that invite children to play and stimulate their imagination. We translate children's needs into beautifully designed solutions and make the world more varied and nicer for children with age-appropriate toys and games.

Together we awaken children's enthusiasm, love of discovery, and curiosity. Driven by this motivation, we constantly reinterpret the topic of play in its various facets. With our combined expertise in creativity and play, furniture construction, and interior design, we develop everything from the first idea to the finished play area, from building blocks to large adventure play worlds, all from a single source.



CONCEPTS & DESIGN

Whether room concepts, furniture systems, individual pieces, or teaching and learning materials: We aim to let children grow up in an environment that promotes their development and in which they can also express their own individual personality. It is therefore very important to us that we gear our product development as closely as possible to the needs of children and educational

professionals. For this reason, we work with experts from education and science to develop unique series of educational games as well as room concepts and innovative furniture that support, challenge, and are fun, while providing sound educational knowledge. A well-thought-out design, high functionality, and educational relevance always come together to form a whole.



QUALITY & SAFETY

We attach great importance to excellent materials and high-quality workmanship. We manufacture many of our products at the company headquarters in Bad Rodach and test them directly in-house. Furniture is used intensively on a daily basis and must be able to withstand all kinds of stress. It is important to us to recreate the real conditions on our test bench. This is why we subject tables, chairs, and cupboards, for example, to a continuous load test.

Our in-house requirements even go beyond the European standards. ISO 9001 quality management and continuous product inspections are also very important to us. Many of our products carry the GS test seal because safety comes first!



ADVICE & PLANNING

Planning daycare, childcare, preschools, and schools is best done using teamwork. Careful analysis and personal discussions about concepts, objectives, and the general conditions form the basis for developing a well-thought-out room plan or selecting teaching and learning materials. Our trained sales representatives will advise you on site at your facility and draw up a quote that is

tailored to your wishes. We are in close contact with colleagues from the various units in our company and can therefore offer you sound knowledge and many years of experience.



THE WORLD BELONGS to children! They cheerfully embark on new adventures every day and discover their surroundings in their very own way. They express their emotions without inhibitions, giggle, laugh, and cry when they feel like it, and sweep everyone up in their enthusiasm. This makes it all the more important that they feel completely at ease and can develop in an age-appropriate way in childcare, preschool, and school.

CHILDREN

OUR ROOM CONCEPTS

A PLACE TO FEEL AT EASE – WELL-THOUGHT-OUT ROOM PLANNING.

Children are curious, creative, and imaginative. They don't play to learn, they learn when they play. Our room concepts focus on the fun of play and the experience, and our toys and games stimulate the imagination, invite discovery, and offer age-appropriate play ideas. They leave plenty of space for imaginative playing alone, in pairs, or in groups, whether quiet activity or wild romping around. We make sure that our room solutions are safe, durable, and easy to clean, depending on where they are used. Children have an unbridled urge to move. An environment that offers plenty of stimulation in a straightforward, fast, and simple way supports educational professionals in responding to the important basic needs of children.

We create spaces to encourage and challenge children. Their demands and those of your staff are at the heart of this. Our room concepts combine education, aesthetics, and flexibility and take into account both the motor and sensory development of children. Furniture and room elements play an important role here, addressing the educational areas, facilitating the daily routine, and supporting professional staff in their educational work.

Combined with a natural color scheme, our room concepts create the perfect balance between a sense of security and exciting challenges – and support

childlike and curious exploration of the environment in the room. The use of the individual colors can have a wide variety of effects. For example, light colors make rooms look much larger and airier, while dark colors make them small and cozy. Bright colors stimulate children, but can also be overwhelming if used too generously. Then pastel shades are called for, which calm and settle children. Before planning and furnishing a room, it is therefore essential to clarify what the function of the room will be later on so that the appropriate colors can be selected. Light colors for the entrance area or corridor, soft colors for the quiet room or learning room, stimulating colors for the group room or classroom.



Natural room concepts to feel at ease.



Learning reimagined thanks to modern room concepts.



The color scheme of a room has a major impact on its users.

OUR ROOM CONCEPTS

EDUCATIONALLY WELL-THOUGHT-OUT CONCEPTS –
ROOMS THAT SUPPORT.



In the ideal room, children and educators feel at ease.


Children need to feel at ease in their surroundings to ensure healthy development, to learn new things, and to find the courage to sometimes try things which are difficult. Child-oriented rooms should therefore be furnished in such a way that children experience a feeling of security, and at the same time find stimuli for their further development. When planning, expanding, or renovating preschools, childcare centers, and schools, the focus is therefore on one thing: combining the interests of the children and educational professionals as well as the local conditions in the best possible way. A well-planned room concept acts as an "additional staff member" who supports children in their development and adults in their work. With different furniture, rooms can easily be divided into different areas that mesh harmoniously and offer space for playing and crafting, reading aloud and cuddling, eating and working, learning and concentrating.

With ergonomic chairs and standing workstation solutions, the needs of educational professionals are given special attention. If they are healthy and productive, they can devote all their energy to educational work with the children. In terms of furnishing, it is important that the furniture is adapted to its users regarding function and size and that all different needs are considered as a whole. The design and furnishing of a room influences the mood and behavior of everyone who uses it. Therefore, colors, shapes, and the activities offered should be carefully selected.

Stimulating play materials and well-thought-out teaching equipment complement the furnishings and encourage children in their development.



Relaxed learning for school children, pleasant working atmosphere for educators.

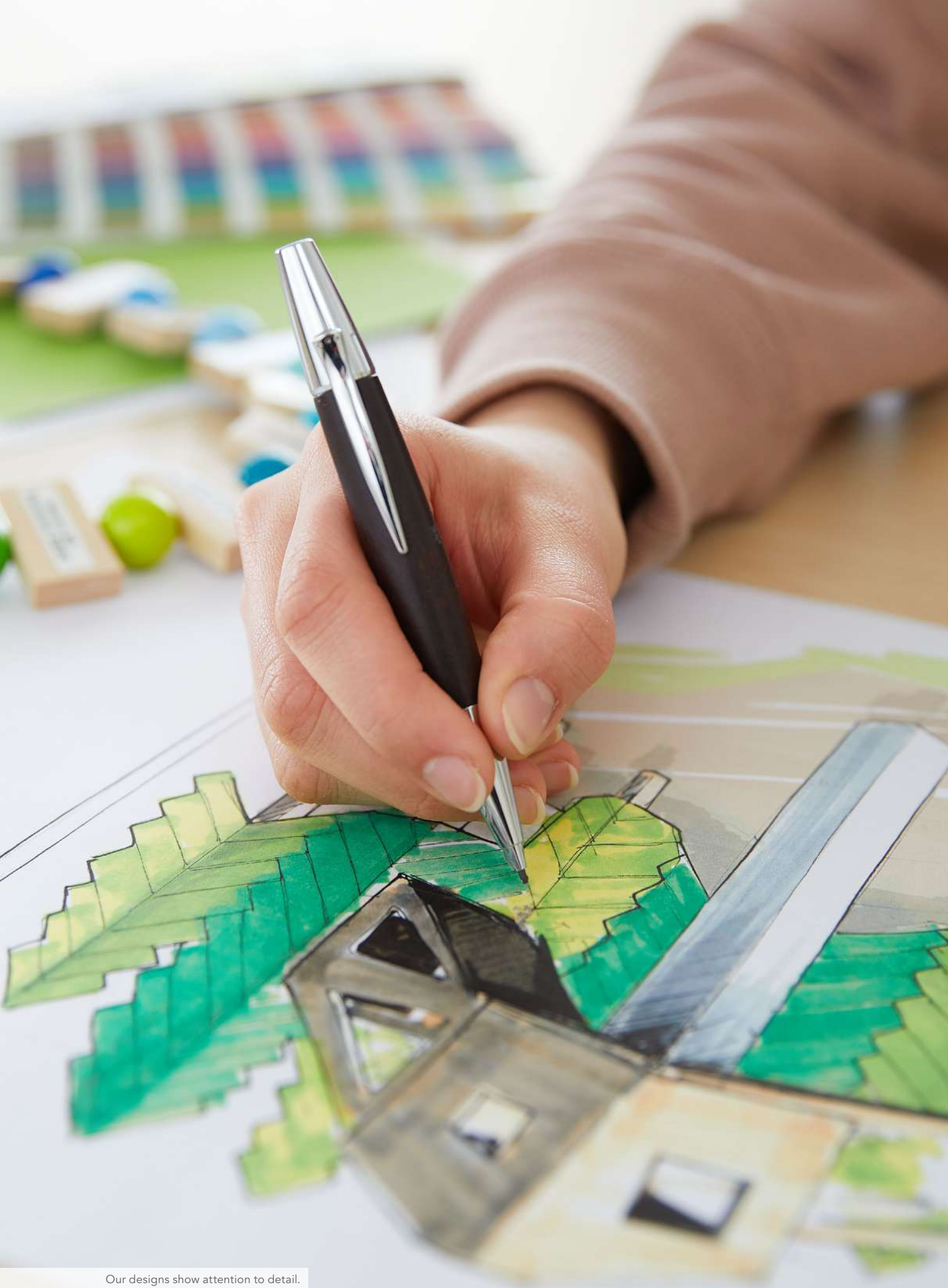


THE JOY OF PLAYING is what children make of it. Climbing hills, running over meadows, playing hide-and-seek, or simply enjoying time together. Children can play everywhere. This joy of playing inspires us every day and finds its way into our products and designs.

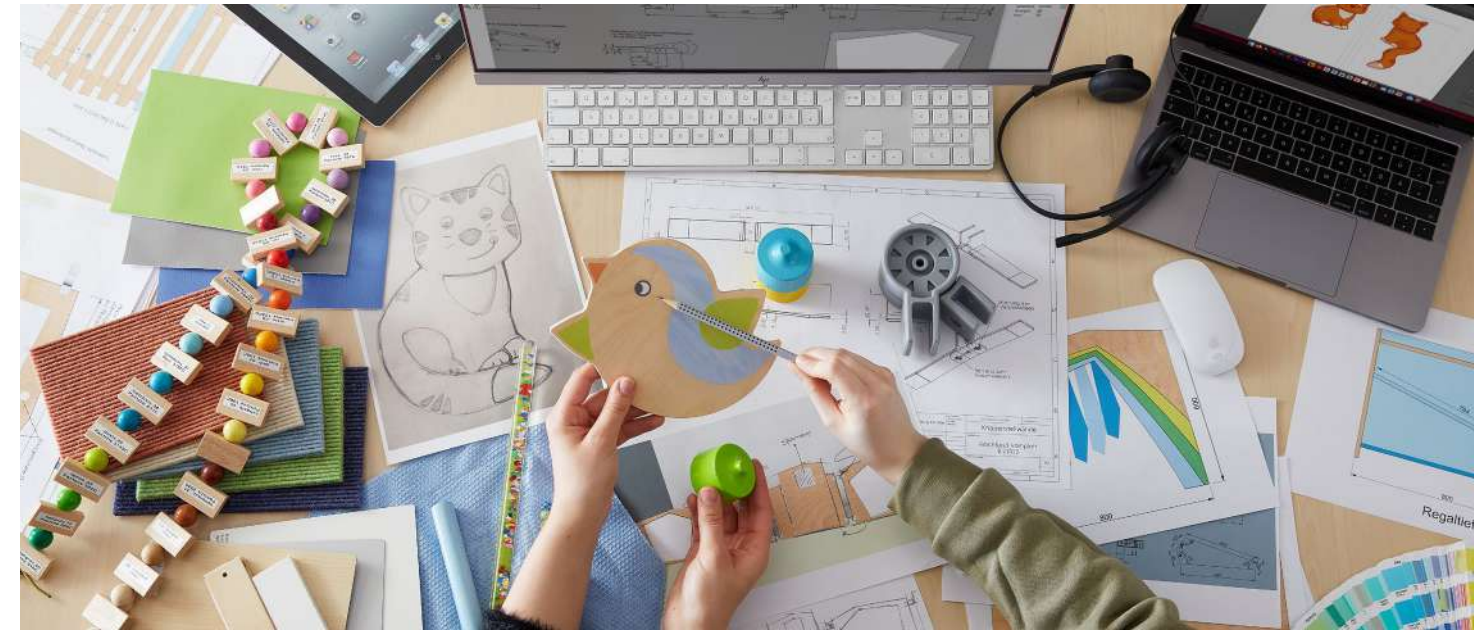
JOY OF PLAYING

DESIGN

CHILD-FRIENDLY & FUNCTIONAL –
OUR DESIGNS.



Our designs show attention to detail.



Child-friendly design is at the heart of our product development. Whether room concepts, furniture systems, or individual pieces, teaching and learning materials or toys – both our in-house developments and our selection of trade products always focus on the needs of children and educators. Our designers exchange ideas with experts from science and practice, observe current developments, and continuously carry out research. All of these insights flow into brainstorming sessions, where our design team collaborates on different ideas. Whether children and those looking after them feel at ease in the facility depends on many factors. One of

these is definitely the materials used. That's why we rely on a wide range of materials of the highest possible quality, enabling children a variety of sensory experiences. We consider what material and which colors can ultimately affect children and educational professionals and where they can be shown to their best advantage. Because seeing and feeling different textures, surfaces, and structures stimulates and encourages children's development.



Alex Rothe · Head of Space & Furniture

"In our designs, we always keep the needs of children and educational professionals in mind. How can we ideally combine appealing designs with functionality? We dedicate ourselves to this task every day – with a great deal of creativity and fun."



TEACHING & LEARNING MATERIALS

WE FILL OUR ROOMS WITH LIFE –
CONCEPTS FOR TEACHING & LEARNING MATERIALS.



All children are curious, creative, and imaginative. They learn and play with great enthusiasm. We aim to let children grow up in an environment that promotes their development and in which they can also express their own individual personality. That's why they deserve the best products that stand out in many respects: educationally sound concepts, appealing design, long-lasting entertainment value, and products that encourage development. With a meaningful educational concept, we capture children's curiosity and their eagerness to learn new things. For this reason, we work with experts from education and science to develop teaching and learning materials that support, challenge, and are fun. With our products, we support all educators in creating an environment for learning and growth. When children find new ideas for their growth and space to develop every day, they grow up with joy.



Ingrid Harke · Manager Intellectual Product

"Our teaching and learning materials support educational professionals in providing targeted support for children. At HABA Pro, we develop further training courses that show how to use materials in the best possible way in an educational environment."

LEARNING AND GROWING STRONGER THROUGH PLAY

Educational professionals provide children with targeted support and help them prepare for their future. Whether in daycare, childcare, preschool, or school: We want to support you in the best possible way! In the development and design of our educational games, we attach great importance to ideas and inspiration from practical experience. Together with specialists from the education and therapy sector, we aim to develop products with which you can master the challenges in your everyday life even better. We develop in-house products with an age-appropriate design that encourage development and invite children to learn, experience, and explore. These enable a holistic development of skills through playing in terms of the six educational areas.

SMART SERIES OF EDUCATIONAL GAMES

The curiosity to explore their own surroundings with all the senses drives children's development. We use this knowledge to develop our series of educational games in order to holistically encourage skills such as action planning, logical thinking, or spatial awareness through playing.

Our series of educational games

- are dedicated to specific and relevant topics
- are based on lovingly designed analog game materials
- make complex issues comprehensible and child's play



EDUCATIONAL AREAS – HOLISTIC DEVELOPMENTAL SUPPORT FOR CHILDREN

The holistic development of children is the most important goal of education. The educational areas in which this development takes place in daycare, preschool, childcare, school, and after-school care are determined by the states' educational plans. Facilities and educational professionals can largely customize how this is implemented in their daily work with children. Many activities in educational work with children address aspects from several educational areas. For example, movement activities always benefit perception and social development as well. Creative painting, crafting, building, and playing trains fine motor skills, stimulates perception, and promotes basic cognitive and social

skills. Lighting this fire in children is probably the most satisfying task for educational professionals. As educators, teachers, and therapists, you give children ideas and inspiration to learn, grow, and discover the world around them through their own experiences. We want to support you as best we can to accompany children on this developmental path. We also want to give you some inspiration to design your rooms in a way that encourages development as well as some helpful tips for how you can make a big difference with even small design possibilities.



CHILDLIKE OPENNESS amazes adults time and again. Because children enjoy contact with others and have no prejudices: Linguistic hurdles are happily overcome with gestures, physical impairments simply played away. The fact that everyone is different is completely normal for children. The main thing is that they can play with each other and have fun.



OPENNESS

DESIGNING ROOMS WITH COLOR

WE BRING NATURE INDOORS – IDEAS FOR A NATURAL COLOR SCHEME.

Colors influence our perception and our moods. They awaken emotions and memories and make an important contribution to our sense of well-being. That's why it's important to consider the effects of colors when designing interior spaces, and to use them consciously in the design process. We have done precisely this and have developed three color design concepts for educational facilities: Terra, Aqua, and Dune. Their color schemes are based on nature and bring nature into the room. They are characterized by soft colors, complemented by a few sparingly applied accents. These natural and timeless colors evoke positive associations and are reminiscent of beautiful landscapes. The harmonious color combinations support familiar visual patterns and create a feeling of safety and security.

Our color design concepts are not based on short-lived trends or personal preferences. They focus on the specific needs of children and educational professionals and enable the design of a room to be perfectly tailored to its users. The color scheme gives the room its character and influences the mood of children and educational professionals. Colors are an essential element of our lives: They make us sad or happy, can make rooms look

cold or cozy, cause calm or restlessness, encourage sociability or concentration. It is precisely because colors are so important for the indoor atmosphere of an educational facility that we rely on holistic color concepts when planning and designing rooms. To do this we have to analyze the function of the room and how long the children and staff spend in it.

WHAT CAN BE ACHIEVED WITH A ROOM'S COLOR SCHEME?

- Children feel safe
- Playful learning in a prepared environment
- Support and guide mood and concentration through color
- Create structure and provide guidance to educational professionals
- Create an atmosphere that supports the individual educational areas
- Create a high-quality workplace for educational professionals and reduce their workload

COLOR CONCEPT **AQUA**



Page 26/27

COLOR CONCEPT **TERRA**



Page 28/29

COLOR CONCEPT **DUNE**



Page 30/31

Natural and timeless color scheme.

DESIGNING ROOMS WITH COLOR

WHO, WHERE, HOW LONG – COLORS & THEIR EFFECT.

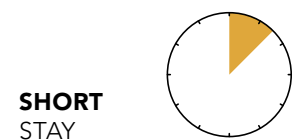
The most important influence on the individual color scheme of a room comes from its users. As a general rule, the younger the children, the more subtle the colors and contrasts should be, especially in rooms that they stay in for a longer time. For daycare children, color schemes that convey a sense of security, safety, confidence, and calm are optimal. Visual stimuli should only be used sparingly and carefully. For preschool children we recommend soothing color schemes that convey warmth and trust. At the same time, focused contrasts and fresh, regenerative elements can also be used to encourage concentration and offer visual stimuli.

The average length of stay in a room should also be considered when designing the color scheme. If this is short, a strong color can be used. If this is longer, then pastel tones, which contribute to a quiet and calming room atmosphere, are preferable. Rooms with a long length of stay are generally group rooms, specialist rooms, or classrooms. In break rooms or intensive rooms the length of stay is medium-length, whereas entrance areas, corridors, or staircases are only used for a short period of time, and can therefore tolerate more intense colors. Regardless of all these factors, large surfaces should be kept in relatively subtle colors. Smaller surfaces, on the other hand, are good for color accents, as long as these are consistent with the overall design.

As well as the users and the length of stay, the function of a room also has an important influence on its color scheme. In general you can choose between a warm or a cool color scheme. Warm colors are stimulating

and activating, they convey nearness and security, and increase the feeling of well-being. Brown, red, or orange shades, like those in our color concept Terra, would therefore be a good choice for group rooms and play areas. On the other hand, cool colors like those in our color concept Aqua, such as blue in all its tones, are calming, relaxing, and regenerative, and are recommended for sleep rooms. In rooms used for learning, a color scheme that uses light green shades, such as those in our color concept Dune, can support concentration and receptiveness. These effects can be influenced by the degree of saturation of the colors – the darker the color the stronger its effect.

A successful result occurs when the material, color, and light sources are specially matched to the respective room and its function. Opt for more subtle, harmonious colors for rooms where younger children stay for longer periods of time. These have a calming effect and create trust. Deliberate contrasts and visual stimuli have a stimulating effect on older children. Such color accents also encourage concentration. We will advise you on the right color scheme for your facility, based on the size and use of the room, the length of stay, and the age of the children.



- Cloakroom
- Bathroom
- Foyer
- Staircase
- Corridor



- Break room
- Cafeteria
- Multi-purpose room
- Recreation room
- Intensive room



- Group room
- Daycare room
- Classroom
- Auditorium



The longer the time spent in the room, the more subtle a room's color scheme should be.



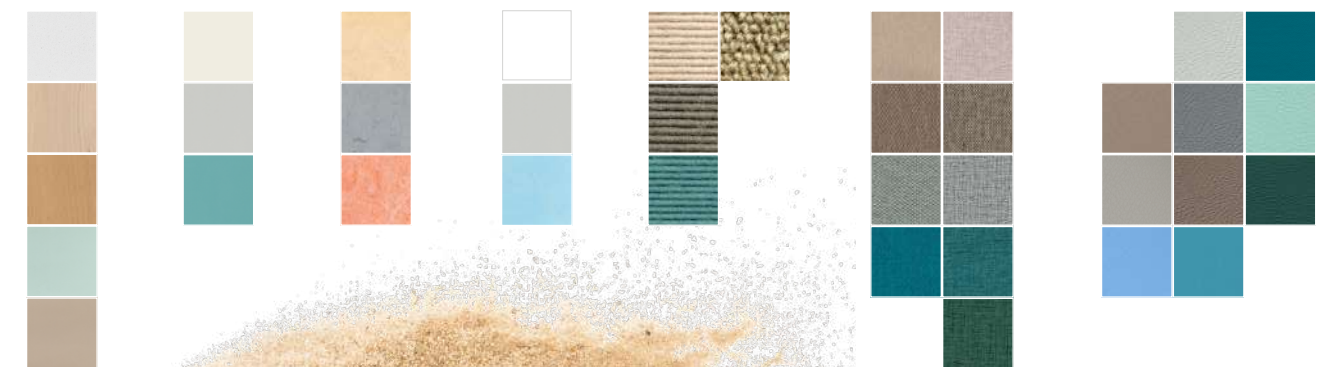
COLOR CONCEPT AQUA

LIKE A DAY BY THE SEA –
COLOR DESIGN CONCEPTS.

The gentle sound of the waves, fine sand between the toes, and the smell of salty sea air – that’s our color concept Aqua. Inspired by the blue sea, the light sandy beaches, and everything you can find on a walk on the beach, Aqua brings the holiday feeling indoors. The different blue and natural shades not only convey a feeling of calm, safety, and contentedness. Blue is also known for stimulating creativity and inspiring new

solution strategies. It encourages thinking outside the familiar framework. In terms of room design, the color concept Aqua is particularly suitable for children aged six to ten in school. The colors make the rooms appear larger and give them cooling properties. This is particularly advantageous in entrance and waiting areas.

DUROPAL & DECOR POWDER COLORS LINO-LEUM STAIN CARPETS FABRICS SYNTHETIC LEATHER





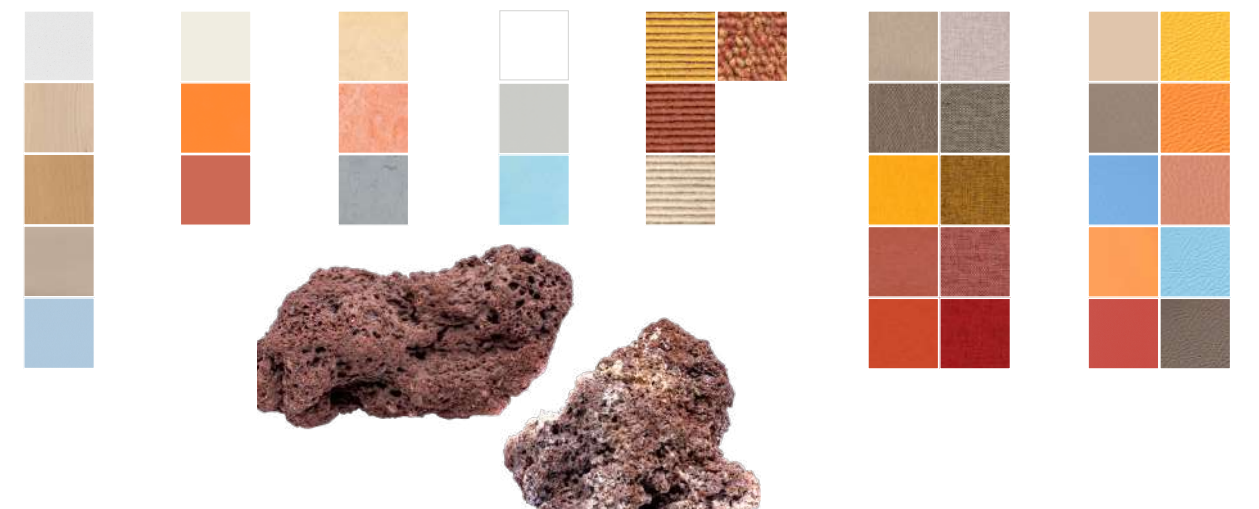
COLOR CONCEPT TERRA

ALWAYS STAY NICELY GROUNDED –
COLOR DESIGN CONCEPTS.

Red as the Grand Canyon at sunset, orange as the tastiest mandarins, and brown as the earth after a rain shower. The color concept Terra is closely linked to nature and brings every room to life. Warm red and orange shades have a friendly and invigorating effect, increasing attention and motivation. This is why they are particularly suitable for group rooms and play areas. It is therefore a great idea to decorate a room with various

warm color accents. The brown, earthy shades can convey a sense of stability and down-to-earthness, expressing a connection to nature and a feeling of security. The neutrality of the earthy colors also leaves room for individual decoration ideas. This makes the color concept Terra an all-round feel-good guarantee for any room.

DUROPAL & DECOR POWDER COLORS LINOLEUM STAIN CARPETS FABRICS SYNTHETIC LEATHER





COLOR CONCEPT DUNE

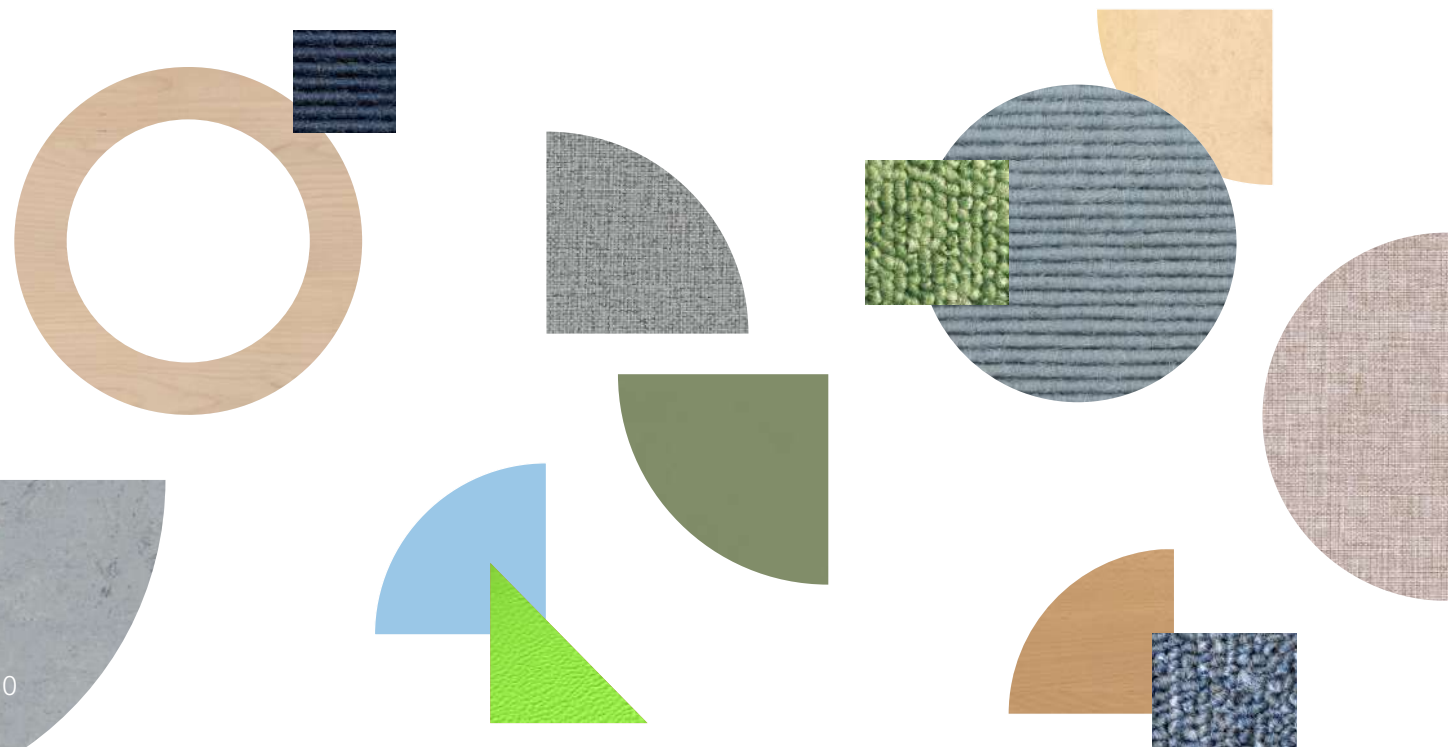
TODAY WE GO GREEN –
COLOR DESIGN CONCEPTS.

Walk barefoot over a green meadow and feel the tickle of the many small blades of grass – that’s pure nature! With all its nuances, the color concept Dune bundles this feeling and brings it into the room. The refreshing shades of green not only symbolize growth and regeneration, but also express harmony and happiness. So it’s no wonder that green is universally known as a relaxing, anti-stress color. Paired with water blue

color accents, the calming effect is complete. The whole thing is accentuated by natural gray tones reminiscent of smooth, cool stones, and fragrant earth. They are the perfect, neutral support colors that make the green and blue look even stronger. The color concept Dune is therefore particularly effective in quiet rooms, teachers’ rooms, or classrooms.



DUROPAL & DECOR	POWDER COLORS	LINOLEUM	STAIN	CARPETS	FABRICS	SYNTHETIC LEATHER





ENTHUSIASM is when children laugh without a care in the world. Enthusiasm is also when children's eyes light up because they've discovered a new secret. Enthusiasm is what drives children every day. We have retained our childlike enthusiasm and develop child-friendly products and room solutions with them in mind.

ENTHUSIASM



OUR QUALITY

TRUST IS GOOD, CONTROL IS EVEN BETTER – QUALITY AND SAFETY

When it comes to our products, quality and safety come first. In our in-house quality assurance, we put every product through its paces before it leaves our warehouse. The careful selection and monitoring of material suppliers as well as compliance with all standards and guidelines guarantee the quality, durability, and safety of all products. The materials used are thoroughly checked before production begins. ISO 9001 quality management and continuous product inspections in our own and external testing laboratories are also very important to us. Because we are confident of their quality, we offer an extended warranty of up to ten years on some products. We also attach great importance to tested safety. Many of our products carry the GS test seal. Wherever children move a lot and quickly, we install furniture panels with a safety radius of 5 mm on the edges, for instance on our cloakrooms or playhouses. This reduces the risk of injury if a child runs into a piece of furniture. This is just one of many ideas with which we make life in preschools and so on a little safer every day.

AN EYE ON THE ENVIRONMENT

We use PEFC-certified real wood from sustainably managed forests for our furniture, playhouses, and platforms. In this way, we make an important contribution to active climate protection with our furniture production – which is good for the environment and us too in the long term. We place great importance on high-quality workmanship in our production facility at the Bad Rodach site. This results in long-lasting products that can



We use wood from sustainably managed forests.

withstand the stress of daily use and can be used for many generations of children.

ROBUST EQUIPMENT

Upholstered furniture in daycare centers and preschools is subjected to a great deal of stress on a daily basis. That's why we offer particularly robust woven fabrics made of polyester: They are breathable and comfortable to sit on. The covers are very light-fast and abrasion-resistant, so they don't fade. They are stain-resistant so that liquids cannot penetrate. And most importantly: We also offer flame-retardant covers.

DURABLE MATERIALS

Real wood, wool, polyester, cotton, synthetic leather, linoleum – we process many materials and use them efficiently, tailored precisely to the user. All materials are characterized by their excellent quality. For example, only extra-firm foam is used in the elements for play and movement landscapes, which prevents sinking in too deeply. Many of our products are manufactured in Germany and tested for quality by us in our in-house testing laboratory.



“Every day, our products are used to their full potential and have to withstand a great deal in preschools and so on. Quality and safety are therefore matters particularly close to our hearts. That's why we test all products very carefully in our in-house quality assurance.”

Matthias Löhnert · Quality Assurance Goods & Toys · Goods & Furniture

Test passed! Our products only reach the market after comprehensive testing.

FIRE PREVENTION & SOUND INSULATION

SAFETY FIRST –
REDUCE NOISE & THE RISK OF FIRE.

LESS NOISE MEANS

- a huge reduction in the stress level
- creating a productive learning and working environment
- the ability to concentrate increases enormously
- easier communication
- hearing damage is prevented



Things often get loud quickly during active play.

SOUND INSULATION

Optimized room acoustics are a central component when designing rooms. They affect the whole atmosphere. In preschools, for example, children express their enthusiasm through lively communication – this creates a certain amount of background noise. Therefore, noise reduction and sound insulation are important issues in preschools, childcare, and schools. Installing acoustic panels and sound absorbers quickly and easily creates a quiet environment in which the physical and psychological health of educators and children is optimally protected. Less noise means much more fun for everyone! This creates a relaxed and productive environment for playing and working.

FIRE PREVENTION

Safety is paramount in preschools and so on, and the fire protection regulations in force are correspondingly high. At the same time, all areas need to be furnished in an appealing and functional way. We support preschools, childcare centers, and schools with special furniture to equip the foyer or corridors so that they are multifunctional and still offer safe escape routes in the event of a fire. In schools, for example, open teaching concepts mean that the corridors, which have rarely been used before now, also become a learning and living space. This is why we offer flame-retardant and non-flammable corridor furniture that passes every fire prevention test yet also features impressive design and functionality.

QUALITY &
SAFETY



We transform corridors into usable space.



CURIOSITY is what makes children discover the most secret places. They examine and observe everything very closely, test and experiment to better understand the world. Their thirst for knowledge is almost impossible to quench. There are always questions about "how" and "why". And that's a good thing, because the future belongs to the curious!



CURIOSITY



• Holz:
Pantone 368 C
hellgelb .18

• KORK:
Biele 0007

• LEOER:
K1 Comfort
steingrau KF20

Our expert team is always at your side.

WORKING TOGETHER AND ADVISING YOU AS EQUALS

WE'RE WITH YOU EVERY STEP OF THE WAY – ADVISING AND PLANNING.

Good concepts are always created in dialog with others. Planning a preschool or classroom is also best done using teamwork. Especially because such a project is a new challenge for many architects and project planners and there are many specific details to consider. For us, close cooperation with all parties involved is part of our everyday work. We bring together a wealth of expertise

from a wide range of specialist departments in our company and combine technical know-how from various fields in our room concepts and furniture. We are always committed to advising all customers as equals and accompanying them from the first planning step to the last detail.

01 | CONTACT



YOUR VISION. OUR EXPERTISE.

You have a vision: Well-thought-out rooms that ensure that staff and children feel at ease. A work environment that gives your employees space for creativity. Let's talk about your project.

02 | CONCEPT



YOUR GOAL. OUR CRAFT.

With your goals in mind, our creative concept developers get to work. Based on your wishes and requirements, we draw up your individual concept with expected costs and concrete implementation plans.

03 | PRESENTATION



YOUR SOLUTION. OUR MISSION.

Pictures say more than a thousand words. We bring our ideas to life with visualized concepts for you. Your feedback is key. Once your wishes have been fulfilled, we will start planning your individual solution.

04 | PLANNING



YOUR PLAN. OUR JOB.

Together we define the technical details and materials. You will receive all the details in our quote. Do you want any more changes? We'll take care of the finishing touches. Are you commissioning the project? We'll get to work.

05 | IMPLEMENTATION



YOUR GO-AHEAD. OUR STARTING SHOT.

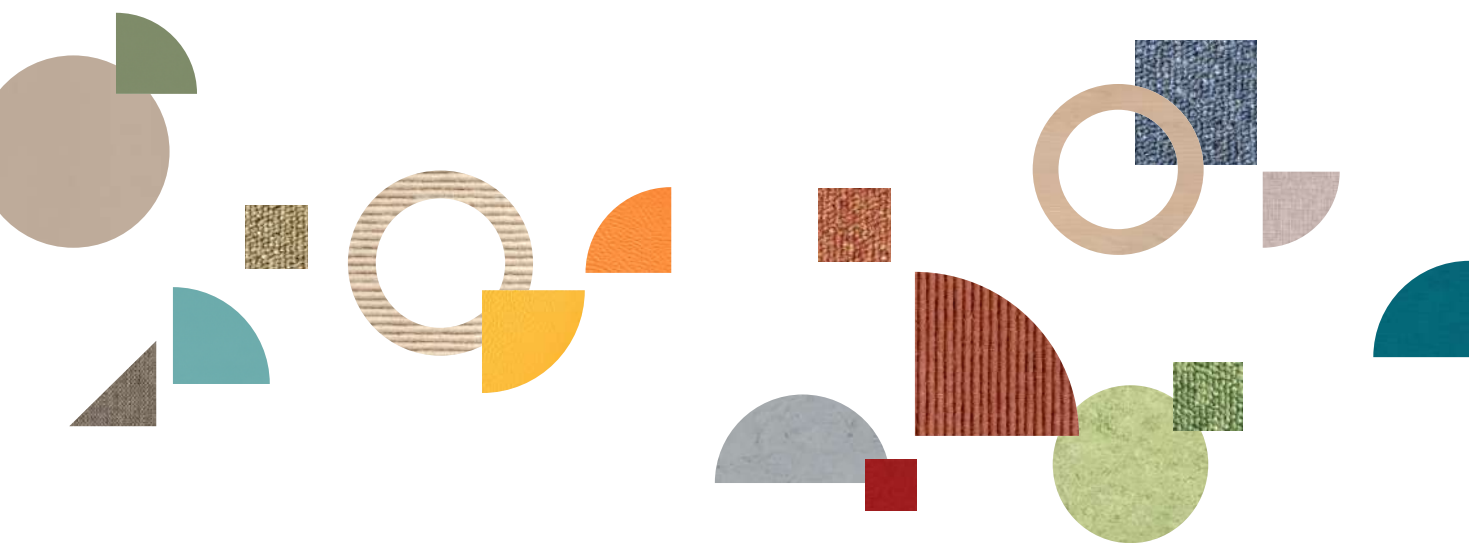
We take care of everything else for you from here. We manufacture your products with love and experience in our in-house production facilities. What else do we give you? Product and maintenance instructions and our gratitude for your trust.

06 | FINISHED



YOUR ENTHUSIASM. OUR GOAL.

Congratulations! You have brought your solution to life, tailor-made for your facility. We are just as happy as you are, and will continue to be there for you.



HABA Pro

For orders and queries please
contact your person in charge or
export@habafamilygroup.com

HABA Sales GmbH & Co. KG
August-Grosch-Straße 28 - 38
96476 Bad Rodach

