



**WE BUILD NECESSITIES,
NOT ACCESSORIES**

48020101



THE PERRY COMPANY

Fortress Products

www.fortresspro.com

500 S VALLEY MILLS DRIVE WACO, TX 76711

FAX: 254-756-2166 PHONE: 800-755-4269

48020101 Can Am OEM Power Tip-Out Windshield Installation Instructions

2017 – 2023 Can Am Defender and Defender Max

Hardware Kit:

M6 x 35mm Button Head Bolt	(4)
M6 Hex Nuts	(6)
M8 x 20mm Button Head Bolt	(8)
M8 Serrated Flange Nut	(8)
1/4" Black Flat Washer	(4)
1/4" External Tooth Washers	(4)
1/4" Weld Stud	(2)
1/4" Serrated Flange Nut	(2)
Solder Seal Connectors	(4)
Terminal Connectors	(2)



Components:

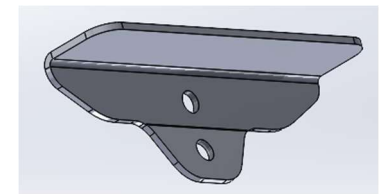
Actuators	(2)
Lower Actuator Bracket (480201CD / CP)	(2)
Upper Prop Extension (48020101 B)	(2)
Lower Actuator Mount (48020101 A)	(2)
Rocker Panel Switch	(1)
Fuse Link	(1)
15 Amp Fuse	(1)



Actuators (x2)



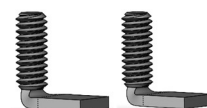
480201 CD / CP



48020101 B (x2)



48020101 A (x2)



1/4" Weld Stud (x2)



Solder Seal Connectors (x4)



Rocker Panel Switch



Fuse Link and 15a Fuse

Brackets

Step 1:

Hardware:

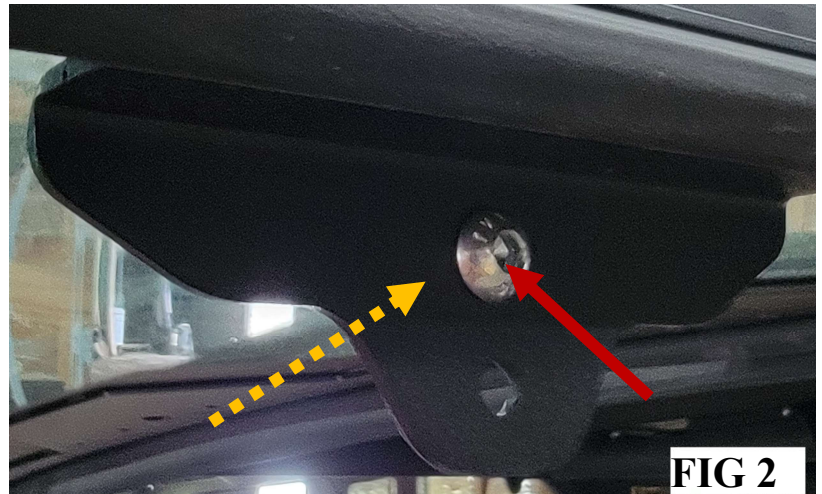
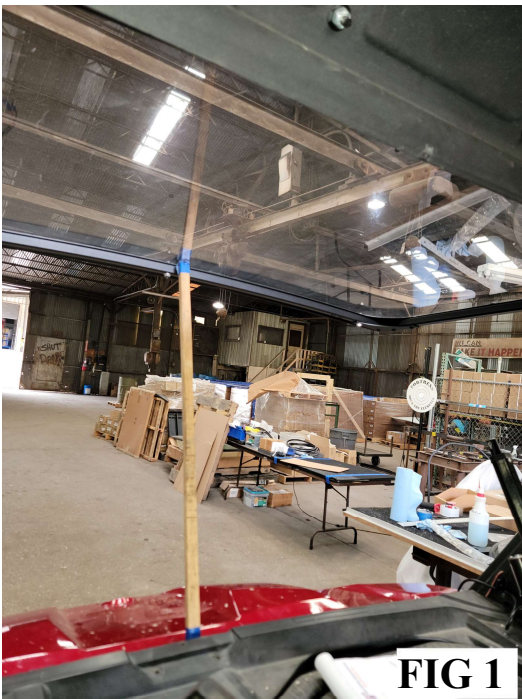
M8 x 20mm Button Head Bolts (2)
M8 Serrated Flange Nuts (2)

Tools Required:

5mm Allen Wrench
13mm Socket & Ratchet or Wrench

Instructions:

Prop the OEM Glass open as shown in **FIG 1**. Install the Upper Prop Extension to the factory glass prop bracket using (1) **M8 x 20mm Button Head Bolt** and (1) **M8 Serrated Flange Nut** as shown in **FIG 2**. (Driver side prop extension shown.) Repeat for passenger side.



Step 2:

Hardware:

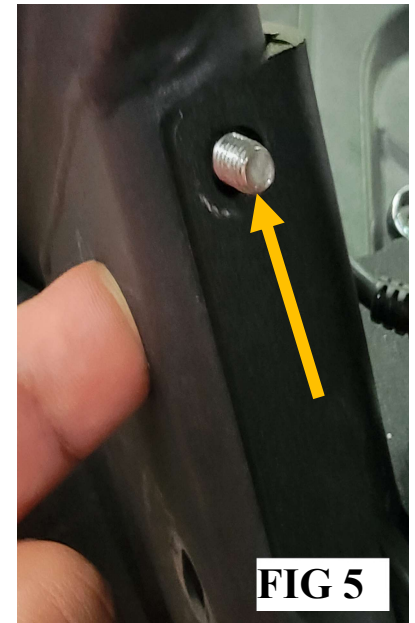
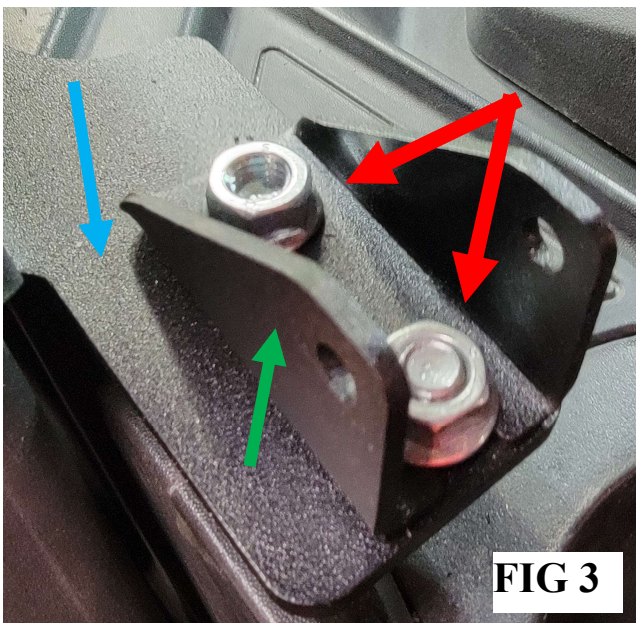
M8 x 20mm Button Head Bolt	(6)
M8 Serrated Flange Nut	(6)
1/4" Weld Stud	(2)
1/4" Serrated Flange Nut	(2)

Tools Required:

5mm Allen Wrench
13mm Socket & Ratchet or Wrench
7/16" Wrench

Instructions:

Install the **Lower Actuator Mount** to the **Lower Actuator Bracket** using (2) **M8 x 20mm Button Head Bolts** and (2) **M8 Serrated Flange Nuts** (**FIG 3**). Make sure to tighten the hardware before installing the Lower Actuator Bracket to the A-pillar. Attach the Lower Actuator Bracket using (1) **M8 x 20mm Button Head Bolt** and (1) **M8 Serrated Flange Nut** into the A-pillar (**FIG 4**). Use the 13mm Socket & Ratchet to tighten the flange nut while using the 5mm Allen Wrench on the bolt. Install (1) **1/4" Weld Stud** in the front of the pillar using (1) **1/4" Serrated Flange Nut** and use the 7/16" Wrench to tighten as shown in **FIG 5**.



Step 3:

Hardware:

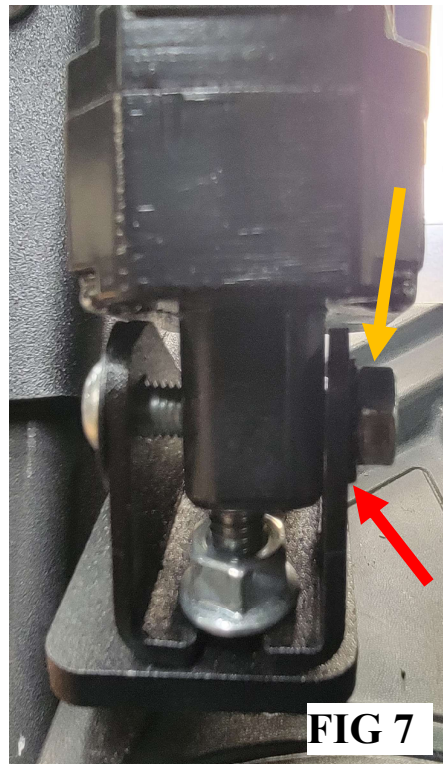
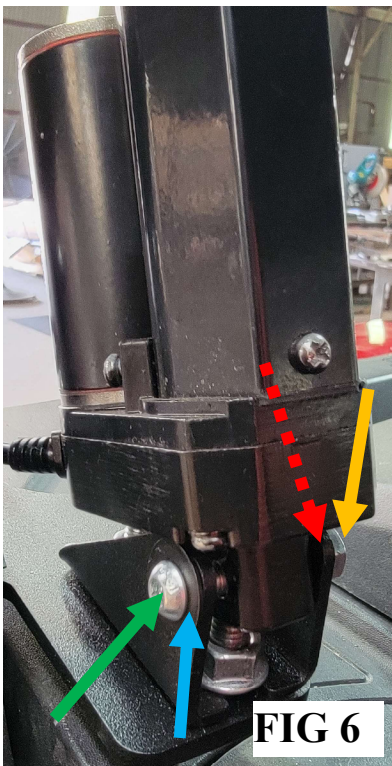
M6 x 35mm Button Head Bolt	(2)
M6 Hex Nut	(2)
Black Flat Washer	(2)
1/4" External Tooth Washer	(2)
Actuators	(2)

Tools Required:

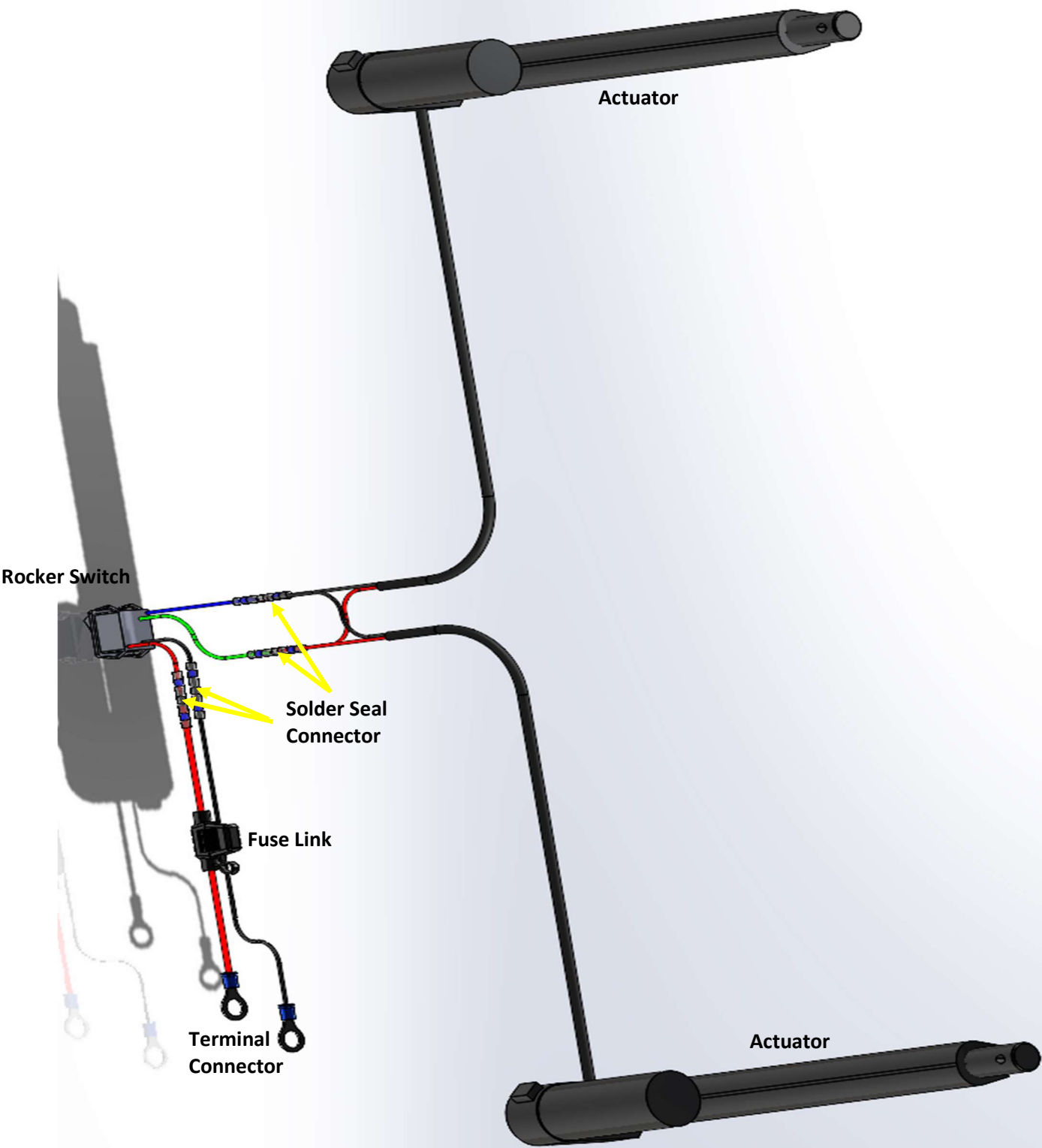
4mm Allen Wrench
10mm Wrench

Instructions:

Attach the lower part of the actuator to the Lower Actuator Mount using (1) **M6 x 35mm Button Head Bolt**, (1) **1/4" Black Flat Washer**, (1) **1/4" External Tooth Washer** and (1) **M6 Hex Nut** as shown in **FIG 6** and **FIG 7**. Run your lead wire from the actuator through the tab on the Lower Actuator Bracket as shown in **FIG 8**. Repeat for passenger side.



Wiring Harness Diagram

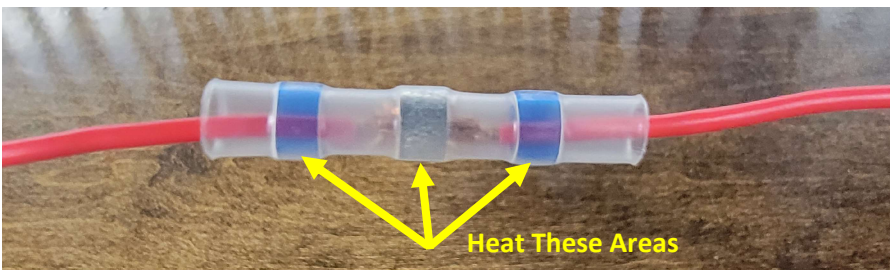


Solder Seal Connectors

Prepare the wires by stripping back a 1/4" off the end of each wire that is going to be connected. Slide a butt connector over one of the wires. You are going to then twist the exposed wire strands together and twist.



Slide the connector over the exposed ends of the wire lining up the center of the wire to the center of the connector. Apply heat with a heat gun or lighter until the solder on the inside melts and flows around the wire strands. Make sure to apply heat evenly to all sides of the connector to ensure a good connection.



Allow the connector to cool before handling the wire. The solder will harden as it cools to create a permanent connection. Inspect the connection to make sure the wires are securely connected and to make sure the tubing is completely sealed around the connection.



Electrical

Hardware:

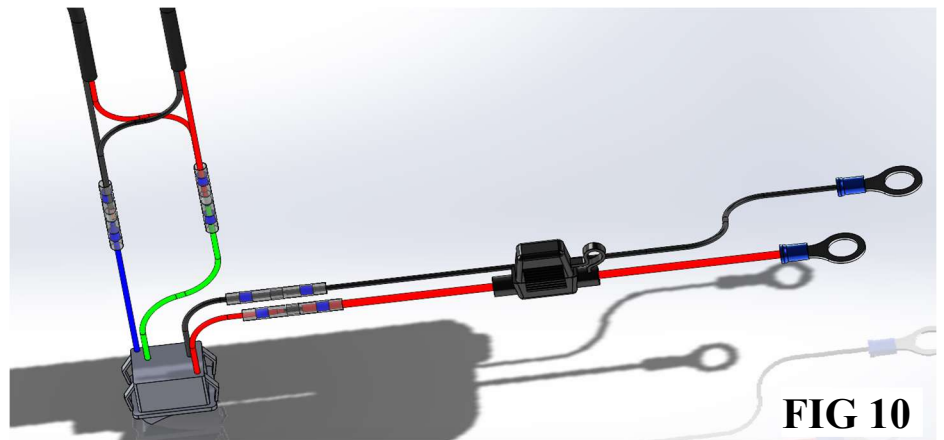
Rocker Panel Switch	(1)
Fuse Link	(1)
15a Fuse	(1)
Terminal Connectors	(2)
Solder Seal Connectors	(4)

Tools Required:

Heat Gun or Lighter
Wire Cutters
Wire Crimpers
Dremel Tool
Flat Screwdriver

Instructions:

Remove the rocker panel from the dashboard using a flat screwdriver. Choose the location on which you want to mount the Rocker Switch. Using a Dremel (or similar cutting apparatus) cut the dash panel to accommodate the Rocker Switch as shown in [FIG 9](#). Next, you will need to run the actuator leads from both the driver and the passenger side down behind the dashboard. Insert the (2) black wires from the actuators and place them inside one end of the Solder Seal Connector and insert the blue wire from the Rocker Switch into the other end of the Solder Seal Connector and shrink the connector using a heat gun or lighter as mentioned on the previous page as shown in [FIG 10](#) and [FIG 11](#). Do the same for the (2) red wires and insert the green wire from the Rocker Switch to the other end of the Solder Seal Connector and shrink as mentioned. Next, insert the black wire from the rocker switch and install a terminal connector and crimp as shown in [FIG 12](#). Install the 15a Fuse into the Fuse Link. Cut the red wire on the fuse link in the middle. Install a terminal connector on one side and use the last remaining Solder Seal Connector on the other end to connect to the red wire on the rocker switch as shown in [FIG 12](#). Run the terminal connectors to the bus bar under the dash and install as shown in [FIG 13](#). Turn vehicle to the "On" position to insure that power is going to the rocker switch to activate the actuators.



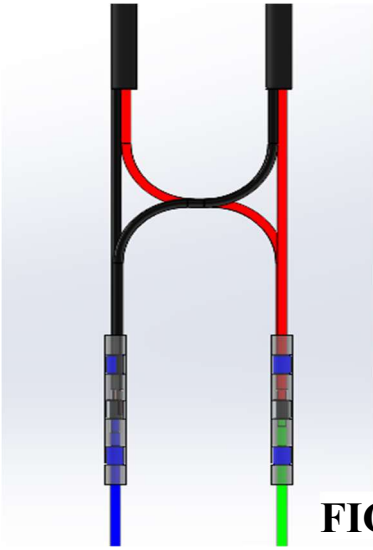


FIG 11

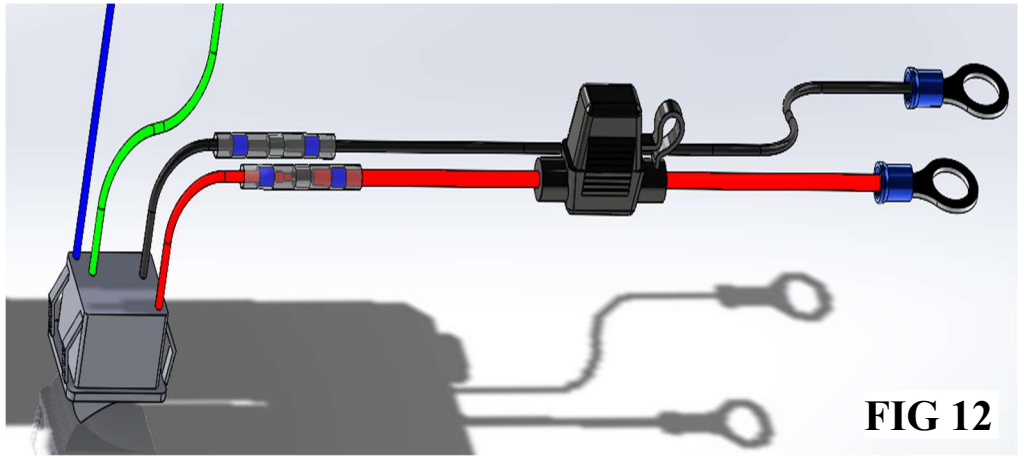


FIG 12

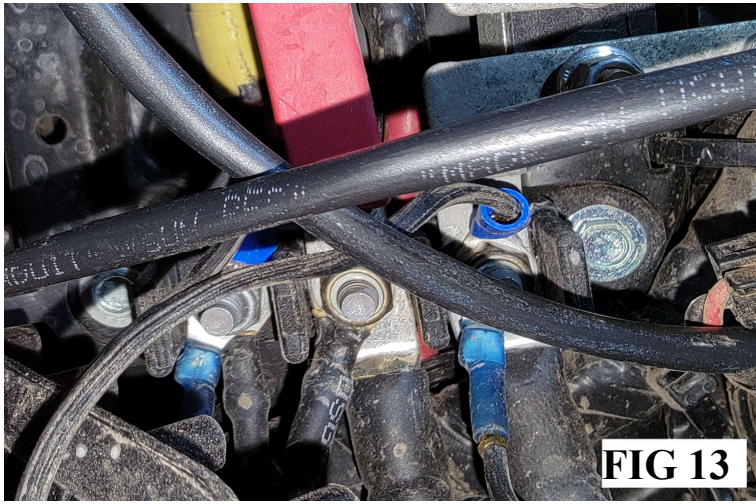


FIG 13

Installation Completion

Hardware:

M6 x 35mm Button Head Bolts	(2)
M6 Hex Nuts	(4)
1/4" External Tooth Washers	(2)
Black Flat Washers	(2)

Tools Required:

4mm Allen Wrench
10mm Wrench

Instructions:

Press the "Up" position on the Rocker Switch to extend the Actuators out. You will connect the extended end of the actuators to the Upper Prop Extension Bracket using (1) **M6 x 35mm Button Head Bolt**, (1) **Black Flat Washer**, (2) **M6 Hex Nuts** and (1) **External Tooth Washer** as shown in **FIG 14**. Tighten the M6 Hex Nut that goes between the actuator and the Upper Prop Extension Bracket finger tight only, to allow the actuator to pivot while in use. Repeat the process for the passenger side.

