



**WE BUILD NECESSITIES,
NOT ACCESSORIES**

410623RSK



THE PERRY COMPANY

Fortress Products

www.fortresspro.com

500 S VALLEY MILLS DRIVE WACO, TX 76711

FAX: 254-756-2166 PHONE: 800-755-4269

410623 Rear Seal Kit INSTALLATION INSTRUCTIONS

2018 - 2021 Polaris Ranger XP 1000 – Half Doors



Hardware Kit:

1/4" x 1" Black Hex Bolt	(1)
1/4" Black Flat Washer	(1)
1/4" Flange Nut	(1)
Fortress Dome Decal	(2)

Components:

Driver Seal Retainer	(1) 410623 SKAD
Passenger Seal Retainer	(1) 410623 SKAP
Rear Driver Seal	(1) 16425
Rear Passenger Seal	(1) 16426
Hinge Seal	(2) 16427



410623 SKAD (Driver)
410623 SKAP (Passenger)



16425 (Driver)
16426 (Passenger)



16427
(Driver & Passenger)



Fortress Dome Decals



1/4" x 1" Black Hex Bolt
1/4" Black Flat Washer
1/4" Flange Nut

Step 1:

Hardware Required:

No Hardware Required

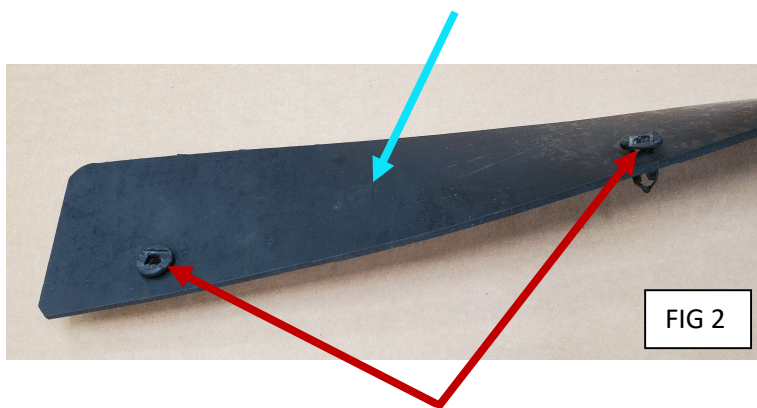
Tools Required:

T40 Torx Bit

Push Pin Pliers

Instructions:

Remove the (2) factory Push Pins and (4) factory Torx Bolts as shown in FIG 1. Insert the (2) Push Pins into the Driver Seal as shown in FIG 2. Install the Driver Seal onto the unit as shown in FIG 3.



Step 2:

Hardware Required:

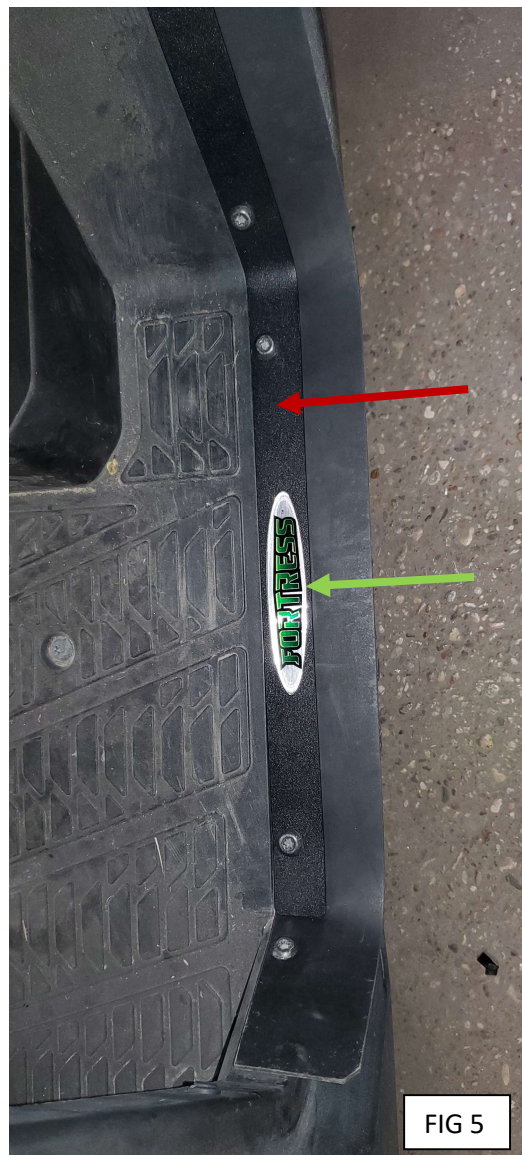
No Hardware Required

Tools Required:

T40 Torx Bit

Instructions:

Clean the area on the Driver Seal shown in FIG 4 with alcohol. Place the Driver Seal Retainer onto the unit as shown in FIG 4. Replace the (4) factory Torx Bolts and tighten. Remove (1) Fortress Dome Decal from backing and place into the oval slot on the Driver Seal Retainer as shown in FIG 5 and press firmly for good adhesion.



Step 3:

Hardware Required:

1/4" x 1" Black Hex Bolt

1/4" Black Flat Washer

1/4" Flange Nut

Tools Required:

T40 Torx Bit

Push Pin Pliers

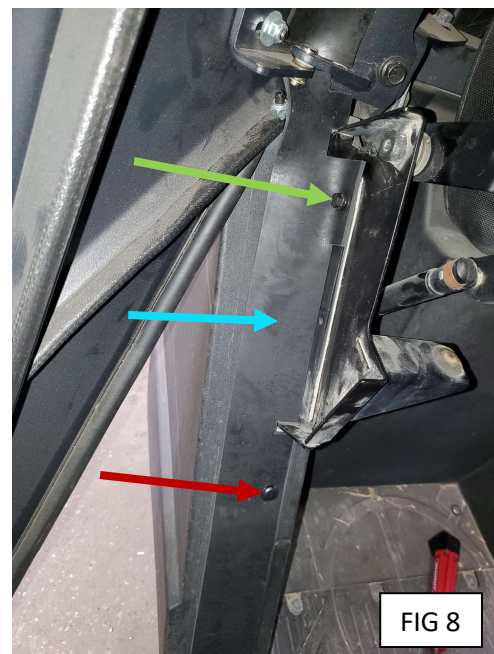
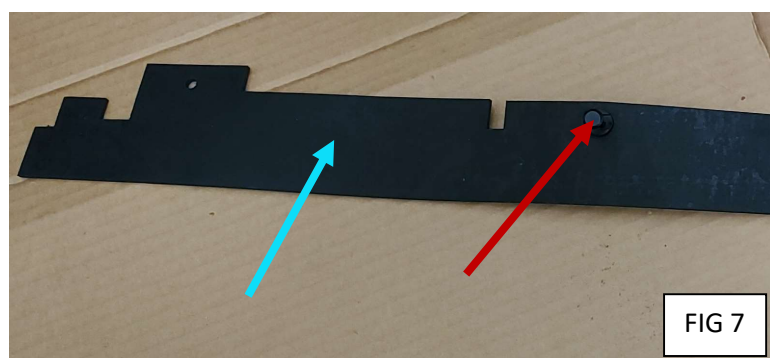
3/8" Wrench

7/16" Wrench

Instructions:

Remove the (1) factory Push Pin and (5) factory Torx Bolts as shown in FIG 6.

Insert the (1) Push Pin into the Passenger Seal as shown in FIG 7. Install the Passenger Seal onto the unit as shown in FIG 8. Install (1) 1/4" x 1" Black Hex Bolt, (1) 1/4" Black Flat Washer and (1) 1/4" Flange Nut into the location shown in FIG 8 to secure the Passenger Seal to the seat bracket and tighten.



Step 4:

Hardware Required:

No Hardware Required

Tools Required:

T40 Torx Bit

Instructions:

Clean the area on the Passenger Seal shown in FIG 9 with alcohol. Place the **Passenger Seal Retainer** onto the unit as shown in FIG 9. Replace the (4) factory Torx Bolts and tighten. Remove (1) **Fortress Dome Decal** from backing and place into the oval slot on the **Passenger Seal Retainer** as shown in FIG 10 and press firmly for good adhesion.



Step 5:

Hardware Required:

No Hardware Required

Tools Required:

Tape Measure or Ruler

Instructions:

Clean the area shown in FIG 11 of the Hinge Mount with alcohol. Using a tape measure or ruler, mark 1-3/8" from the "inside edge" of the Hinge (between the two mounting tabs) as shown in FIG 11. Peel back approx. 2"-3" of the protective film on the "top" portion of the Hinge Seal as shown in FIG 12. Place the Hinge Seal into position at the "top" of the Hinge (under the top tab) as shown in FIG 13. Peel back the protective film as you work your way down the hinge as you set the seal into place. * Repeat this step for the Passenger Side. *

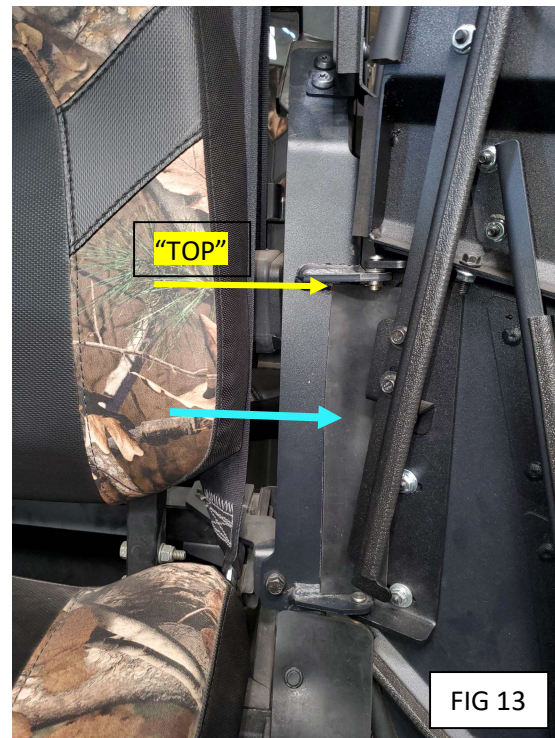


FIG 11, 12 & 13 are for the "Driver Side". Use "opposite" for the Passenger Side.