

Black Sheep

FOODS

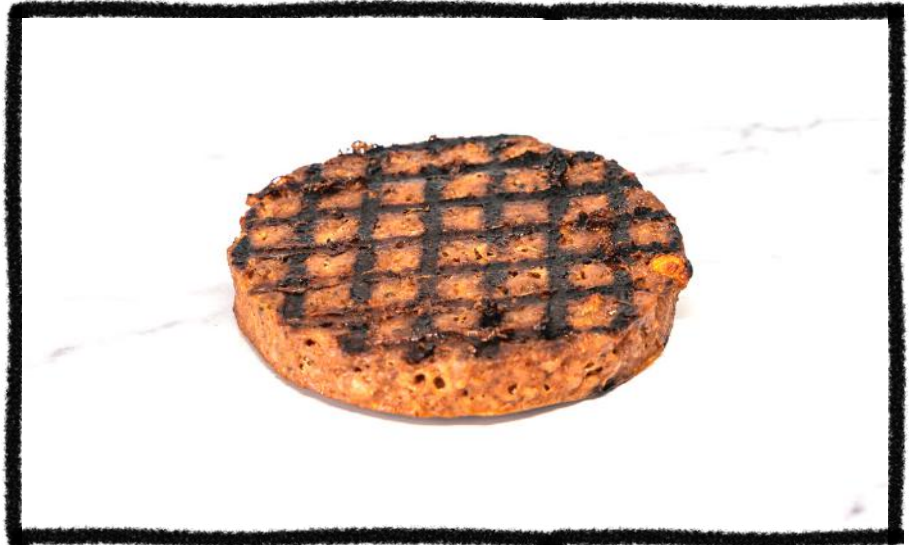
PLANT-BASED LAMB PATTY



Plant lamb that's delicious, dynamic in application, and drives diner demand.

- ✓ HIGHER YIELD
- ✓ HIGHER MARGINS
- ✓ KITCHEN EFFICIENCY
- ✓ INCREASE ORDER FREQUENCY

Nutrition Facts	
Serving size	113g
Amount Per Serving	
Calories	210
% Daily Value*	
Total Fat 14g	18%
Saturated Fat 3g	16%
Trans Fat 0g	
Cholesterol 0mg	0%
Sodium 510mg	22%
Total Carbohydrate 7g	2%
Dietary Fiber 4g	13%
Total Sugars 0g	
Includes 0g Added Sugars	0%
Protein 17g	
Vitamin D 0.0mcg	0%
Calcium 40mg	4%
Iron 3.4mg	20%
Potassium 230mg	6%
* The % Daily Value (DV) tells you how much a nutrient in a serving of food contributes to a daily diet. 2,000 calories a day is used for general nutrition advice.	



Black Sheep 4 OZ. PATTY

INGREDIENTS:

Water, Pea Protein*, Refined Coconut Oil, Canola Oil, Refined Cocoa Butter, Natural Flavors, Less than 2% of: Chickpea Protein, Methylcellulose, Potato Starch, Vegetable Fiber, Potassium Chloride, Vegetable Juice Powder (for Color), Apple Juice Concentrate, Pomegranate Skin Extract, Thiamine Hydrochloride (Vitamin B1), Sodium Ascorbate (Vitamin C), Vitamin E, Cultured Dextrose, Rosemary Extract, Citrus Fiber

STORAGE & HANDLING:

Store frozen. For best results, cook from frozen.

GTIN / SKU: 00196852398751

PER CASE: 4x 2 lb. sleeves

CASE DIMENSIONS: 15 x 11 x 5

CASE GROSS WEIGHT: 8 lbs.

PALLET DIMENSIONS: 40 x 54

CASES PER PALLET: 100

PALLET WEIGHT: 1,050 lb.

PRODUCT CODE: BSF-004