

J 80

V 2.2

© 2012 OneSails

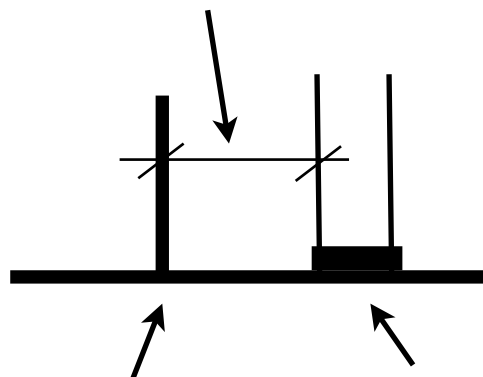
Shroud tension

Tension Gauge Loos&Co PT2-M

Base setting

TWS (kn)	UPPERS	D1	D2
0 / 6	-1 (TOT -2)	-1 (TOT -3)	-1 (TOT -2)
6 / 9	-1	-2	-1
9 / 14	27	12	11
14 / 19	+ 2	+ 1	0
19 / 23	+ 2 (TOT +4)	+ 2 (TOT +3)	+ 3
23 +	+ 2 (TOT +6)	+ 2 (TOT +5)	+ 2 (TOT +5)

TURN VARIATION FROM THE BASE SETTING

FORESTAY LENGHT PIN TO PIN: **10050 mm****Mast Butt position****250 mm**

Bulkhead

Mast Butt

