



SPRING SUMMER 2024

J.LINDEBERG

# SALESBOOK WOMEN'S GOLF

## INDEX

3	SPRING SUMMER 2024
4	COLOR CARD
5	LAYDOWN
8	JERSEY TOP
29	SHIRT TOP
29	JERSEY SWEAT
38	SKIRT DRESS
55	PANTS
66	KNITWEAR
73	OUTERWEAR
79	SHOES
81	ACCESSORIES

- **FOCUS ITEMS**  
Our focus products for the season.
- **SALES SAMPLES**  
Our available sample products for the season.
- **SUSTAINABLE CHOICE**  
This item is made from organic, recycled or PFC-free material.





SPRING SUMMER 2024

J.LINDEBERG

# BRINGING US THE VIBRANT ENERGY OF THE CARIBBEAN ISLANDS, THE SPRING SUMMER 2024 COLLECTION IS DESIGNED TO ADD A BURST OF COLOR AND CONFIDENCE TO ANY GOLF AND OUTDOOR OCCASION.

Drawing inspiration from the lush backdrop of St. Kitts and Nevis, and the rugged terrain of Antigua, the Spring Summer 2024 collection is built to withstand any challenge. Crafted with the latest technical fabrics and a majority of \*sustainably certified materials, the styles are constructed to ensure confidence and comfort – from the course and clubhouse, to the city and beyond.

Made to perform, the collection features several innovative fabrics that'll shield you from the elements. As part of our sustainability policy, the fabrics are certified with either Bluesign or OEKO-TEX 100, and the recycled materials are GRS certified, verifying responsible social, environmental and chemical practices in production. Among the fabric innovations are Schoeller's 3XDRY Bio, a technology that repels water and dries quickly, while still allowing breathability, as well as 3L PRO Waterproof, \*a new waterproof fabric offering ripstop technology for added strength.

Key pieces in the outdoor collections include practical and packable styles that are super lightweight and can be attached to the arm using mesh, making them ideal for hiking. The golf collection features both UV protective styles and several pieces crafted to always keep your body at the ideal temperature, such as the advanced 37.5 technical materials using volcanic ash to regulate the temperature and maintain an optimal 37.5 degrees Celsius. The women's golf collection also features a skirt and cardigan knitted from UV reactive yarn that changes color when exposed to sunlight.

Encouraging us to take on the world with confidence and style, the Spring Summer 2024 sportswear collection is an energetic wardrobe addition, tailored to a life in motion. Lightweight layers, highly technical pieces and bold colors ensure both style and all-day comfort, whether hiking through the rainforest or teeing off on the green in the lush and vibrant nature of the Caribbean Sea.

# COLOR CARD

COLOR STORY 3



O341 Estate Blue    K056 Wax Yellow    O492 Aruba Blue    0000 White    O495 Leopard Aruba Blue

COLOR STORY 2



6855 JL Navy    M073 Paradise Green    S086 Burnt Coral    Q116 Fuchsia Purple    0000 White    S193 Geo Fuchsia Purple    O500 Geo JL Navy

COLOR STORY 1



9999 Black    E031 Almond Milk    O501 Atomizer    G016 Tangerine Tango    0000 White    O497 Neptune Atomizer    O506 Geo Atomizer



**COSTAL CAMO**

BETSY BELT  
BERNHARD BELT  
VILMA BIG VISOR  
AVERY VISOR

GWEN LONG SHORTS  
THEMBA SKIRT  
MAXIME DRESS  
ADIA KNITTED SWEATER

THABISA TOP  
LERATO POLO  
MAKENA POLO  
PALESA CROPPED TOP



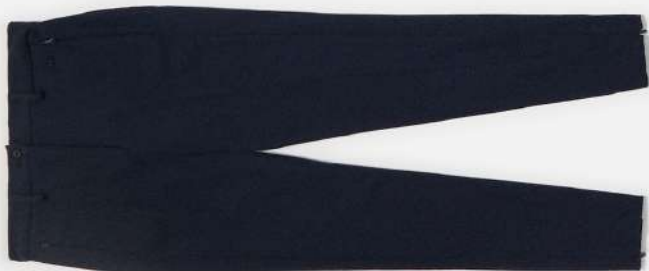


## LEOPARD PRINT

AYLIN SLEEVE  
HANNA BELT BAG  
ASTRID BUCKET HAT  
BONNIE PRINT VISOR  
AVERY VISOR

BRIDGER LEATHER BELT  
NEA PULL ON PANTS  
IZARA POLO  
GIGI SLEEVELESS TOP  
LEONOR MID LAYER

EVERTINE RAIN JACKET  
JOLIE PANT  
THEMBA PRINT SKIRT  
THABISA TOP  
MEGH SHORTS



**JL DIAMOND GEO**

AMELIE MID SKIRT  
KANAI DRESS  
GAYLE SKIRT  
GWEN PRINTED SHORTS

MARIA PANT  
MALAIKA SLEEVELESS  
AKIA TOP  
LILA SLEEVELESS TOP

DENA PRINT SLEEVELESS  
STELLA SCRUNCIE  
ARLENE CAP  
BRIDGE SLEEVES

# JERSEY TOP



E031 ALMOND MILK  
G016 TANGERINE TANGO

O501 ATOMIZER  
9999 BLACK

S086 BURNT CORAL  
0000 WHITE

O341 ESTATE BLUE  
O492 ARUBA BLUE

Q116 FUCHSIA PURPLE  
S086 BURNT CORAL

M073 PARADISE GREEN  
Q116 FUCHSIA PURPLE

G016 TANGERINE TANGO  
0000 WHITE

K056 WAX YELLOW  
O341 ESTATE BLUE



## TOUR TECH POLO GWJT09006 TX JERSEY

This is our iconic Tour Tech polo. It is the bestselling short sleeve polo shirt style season after season. Now in the new seasonal colors.

- Rib collar
- 4 button placket
- J. Lindeberg embroidery at sleeve
- Bridge embroidery at center back
- Bridge embroidery on collar
- Technical 4-way stretch
- Moisture transportation
- Fast dry
- UV+40

Size: XS-XL  
Material: 100% Polyester 170g/m2  
Ökotex100



## JERSEY TOP



S193 GEO FUCHSIA PURPLE  
6855 J.L. NAVY

O500 GEO J.L. NAVY  
Q116 FUCHSIA PURPLE

O495 LEOPARD ARUBA BLUE  
O341 ESTATE BLUE

O497 NEPTUNE ATOMIZER  
0000 WHITE



### TOUR TECH PRINT POLO GWJT09007 TX JERSEY

This is our iconic Tour Tech Golf polo. It is the bestselling short sleeve polo shirt style season after season. Now in the new seasonal prints.

- Rib collar with collar stand
- 4 button placket
- J.Lindeberg embroidery at sleeve
- Bridge embroidery at center back
- Bridge embroidery on collar
- All over print
- Technical 4-way stretch
- Moisture transportation
- Fast dry

Size: XS-XL  
Material: 100% Polyester 170g/m2  
Ökotex100

# JERSEY TOP



E031 ALMOND MILK  
G016 TANGERINE TANGO

O501 ATOMIZER  
9999 BLACK

S086 BURNT CORAL  
0000 WHITE

O341 ESTATE BLUE  
O492 ARUBA BLUE

Q116 FUCHSIA PURPLE  
S086 BURNT CORAL

M073 PARADISE GREEN  
Q116 FUCHSIA PURPLE

G016 TANGERINE TANGO  
0000 WHITE

K056 WAX YELLOW  
O341 ESTATE BLUE



## DENA SLEEVELESS TOP GWJT09009 TX JERSEY

Sleeveless golf top in our seasonal colors and made with our best performing TX Jersey fabric for high comfort and fast dry ability.

- Traditional collar
- Hidden 4 button placket
- Sleeveless
- Embroidery Bridge logo at chest
- Technical 4-way stretch
- Moisture transportation
- Fast dry

Size: XS-XL  
Material: 100% Polyester 170g/m2  
Ökotex100

## JERSEY TOP



S193 GEO FUCHSIA PURPLE  
6855 JL NAVY

O500 GEO JL NAVY  
Q116 FUCHSIA PURPLE

O495 LEOPARD ARUBA BLUE  
O341 ESTATE BLUE

O497 NEPTUNE ATOMIZER  
0000 WHITE



### DENA PRINT SLEEVELESS TOP GWJT09008 TX JERSEY

A sleeveless top in our seasonal prints made in our top performing TX Jersey fabric for high comfort and fast dry abilities.

- Traditional collar
- Hidden 4 button placket
- Sleeveless
- Embroidery Bridge logo at chest
- All over print
- Technical 4-way stretch
- Moisture transportation
- Fast dry

Size: XS-XL  
Material: 100% Polyester 170g/m2  
Ökotex100

## JERSEY TOP



O492 ARUBA BLUE  
O341 ESTATE BLUE

9999 BLACK  
G016 TANGERINE TANGO

Q116 FUCHSIA PURPLE  
0000 WHITE

K056 WAX YELLOW  
O341 ESTATE BLUE

0000 WHITE  
Q116 FUCHSIA PURPLE



### LEYA SLEEVELESS TOP GWJT09005 TX JERSEY

Leya sleeveless golf top has a jacquard knitted rib at neck opening with our J.Lindeberg logo. The style is made in favorite TX Jersey fabric.

- Jacquard artwork at rib collar
- Sleeveless
- Silicone Bridge at front hem
- Technical 4-way stretch
- Moisture transportation
- Fast dry

Size: XS-XL  
Material: 100% Polyester 170 g/m2  
Ökotex100





# JERSEY TOP



9999 BLACK  
0000 WHITE

Q116 FUCHSIA PURPLE  
S086 BURNT CORAL

K056 WAX YELLOW  
O341 ESTATE BLUE

0000 WHITE  
6855 JL NAVY

9999 BLACK  
G138 NEPTUNE TANGERINE  
TANGO

O341 ESTATE BLUE  
O495 LEOPARD ARUBA BLUE

0000 WHITE  
S193 GEO FUCHSIA PURPLE



## PERINNE POLO GWJT09004 TX JERSEY

Perinne Golf Polo has color blocking and branded rib with jacquard knitted J.Lindeberg logo at sleeve end. It is made in TX Jersey.

- Rib collar
- 4 button placket
- J.Lindeberg logo at cuffs
- Cut and sewn contrast panels on shoulder
- Technical 4-way stretch
- Moisture transportation
- Fast dry

Size: XS-XL  
Material: 100% Polyester 170 g/m  
Ökotex100

## CARA POLO GWJT09012 TX JERSEY

Cara is our polo designed with a solid color at front, combined with our seasonal print on the back and on collar.

- Traditional collar
- 4 button placket
- Silicone Bridge print at chest
- All over print on back and collar
- Technical 4-way stretch
- Moisture transportation
- Fast dry
- UV+40

Size: XS-XL  
Material: 100% Polyester 170 g/m  
Ökotex100

## JERSEY TOP



E031 ALMOND MILK  
G016 TANGERINE TANGO

Q116 FUCHSIA PURPLE  
O500 GEO JL NAVY

6855 JL NAVY  
M073 PARADISE GREEN

O000 WHITE  
O495 LEOPARD ARUBA BLUE



### MALAIIKA SLEEVELESS TOP GWJT09179 TX JERSEY

Malaika Sleeveless Golf Top in our fresh new design with a contrast cut out detail at shoulder.

- Cut out detail at shoulder
- 3 button placket
- Sleeveless
- Silicone Bridge logo at chest
- Technical 4-way stretch
- Moisture transportation
- Fast dry

Size: XS-XL  
Material: 100% Polyester 170g/m2  
Ökotex100



## JERSEY TOP



9999 BLACK  
0000 WHITE

G016 TANGERINE TANGO  
O501 ATOMIZER

K056 WAX YELLOW  
O341 ESTATE BLUE

0000 WHITE  
E031 ALMOND MILK



### DEMI POLO GWJT09011 TX JERSEY 37,5

Demi our new exiting polo with cut and sewn rib panels in contrast color with piping and J.Lindeberg branded elastic at sleeve end.

- Rib collar and panels
- 4 button placket
- Piping details
- J.Lindeberg branded elastic at sleeve end
- Bridge print at chest
- Technical 4-way stretch
- Moisture transportation
- Fast dry

Size: XS-XL  
Material: 100% Polyester 170 g/m2  
Ökotex100



DEMI POLO / TANGERINE TANGO / GWJT09011  
NAOMI SKIRT / ALMOND MILK / GWSD09293  
ROSA PRINT BUCKET HAT / NEPTUNE ATOMIZER / GWAC09762



# JERSEY TOP



O492 ARUBA BLUE  
O341 ESTATE BLUE

Q116 FUCHSIA PURPLE  
S086 BURNT CORAL

6855 JL NAVY  
M073 PARADISE GREEN

0000 WHITE  
9999 BLACK



## PIP POLO GWJT09010 TX JERSEY

Pip Polo with a high neck buttoned collar that can be worn both buttoned up or buttoned down in seasonal artwork.

- High neck rib collar with jacquard diamonds
- 4 button placket
- Contrast panels at sides and shoulders
- Technical 4-way stretch
- Moisture transportation
- Fast dry

Size: XS-XL  
Material: 100% Polyester 170 g/m  
Ökotex100



O492 ARUBA BLUE  
O495 LEOPARD ARUBA BLUE

M073 PARADISE GREEN  
S193 GEO FUCHSIA PURPLE

0000 WHITE  
O497 NEPTUNE ATOMIZER



## GIGI SLEEVELESS TOP GWJT09000 TX JERSEY

Our new Gigi golf top with a seasonal printed collar with contrast Bridge logo at the back.

- Seasonal print at collar
- 4 button placket
- Sleeveless
- Silicone Bridge print at back
- Technical 4-way stretch
- Moisture transportation
- Fast dry

Size: XS-XL  
Material: 100% Polyester 170 g/m<sup>2</sup>  
Ökotex100



# JERSEY TOP



E031 ALMOND MILK  
G016 TANGERINE TANGO

O492 ARUBA BLUE  
K056 WAX YELLOW

Q116 FUCHSIA PURPLE  
S086 BURNT CORAL

6855 JL NAVY  
M073 PARADISE GREEN

K056 WAX YELLOW  
O341 ESTATE BLUE



## ASA SOFT COMPRESSION TOP GWJT09003 SOFT COMPRESSION

Asa Soft Compression Top can be worn underneath a polo or on its own, giving a soft compression to your muscles.

- High neck
- J.Lindeberg logo at sleeve
- Bridge logo at front and back of neck
- Soft compression fabric
- Fast dry
- 4 way stretch
- Moisture transportation

Size: XS-XL  
Material: 88% Polyester, 12% Elastane/  
Spandex 160 g/m<sup>2</sup>  
Ökotex100



## JERSEY TOP



S193 GEO FUCHSIA PURPLE  
6855 JL NAVY

O495 LEOPARD ARUBA BLUE  
O341 ESTATE BLUE

O497 NEPTUNE ATOMIZER  
0000 WHITE



### ASA PRINT SOFT COMPRESSION TOP GWJT09002 SOFT COMPRESSION

Åsa Soft Compression Top in seasonal print- can be worn underneath a polo or on its own, giving a soft compression to your muscles.

- High neck
- J.Lindeberg logo at sleeve
- Bridge logo at front and back of neck
- All over print
- Soft compression fabric
- Fast dry
- 4 way stretch
- Moisture transportation

Size: XS-XL  
Material: 88% Polyester, 12% Elastane/  
Spandex 160 g/m2  
Ökotex100

## JERSEY TOP



0492 ARUBA BLUE  
0341 ESTATE BLUE

9999 BLACK  
0000 WHITE

0000 WHITE  
Q116 FUCHSIA PURPLE



9999 BLACK  
G016 TANGERINE TANGO

0000 WHITE  
Q116 FUCHSIA PURPLE



### AZARA TOP GWJT09346 SOFT COMPRESSION

Azara comes with a jacquarded collar with diamond pattern and with zipper at front with statement puller.

- Short Sleeve
- Cut and sewn panels
- Jacquard collar
- Statement puller
- Zip at front
- 25mm Bridge logo at back
- Soft compression fabric
- Fast dry
- 4 way stretch
- Moisture transportation

Size: XS-XL  
Material: 88% Polyester, 12% Elastane/  
Spandex 160 g/m2  
Ökotex100

### KHADIJA TOP GWJT09051 SPORT JERSEY

New sport top Khadja comes with an elastic waist-band in seasonal artwork for real statement look.

- Cropped
- Ultimate support
- Seasonal artwork on elastic
- Decoration seam at front and back
- 4 way stretch
- Moisture transportation
- Fast dry

Size: XS-XL  
Material: 79% Polyester, 21% Elastane/  
Spandex 240 g/m2  
Ökotex100

## JERSEY TOP



O506 GEO ATOMIZER  
G016 TANGERINE TANGO



S193 GEO FUCHSIA PURPLE  
S086 BURNT CORAL



6855 JL NAVY  
0000 WHITE

K056 WAX YELLOW  
O492 ARUBA BLUE

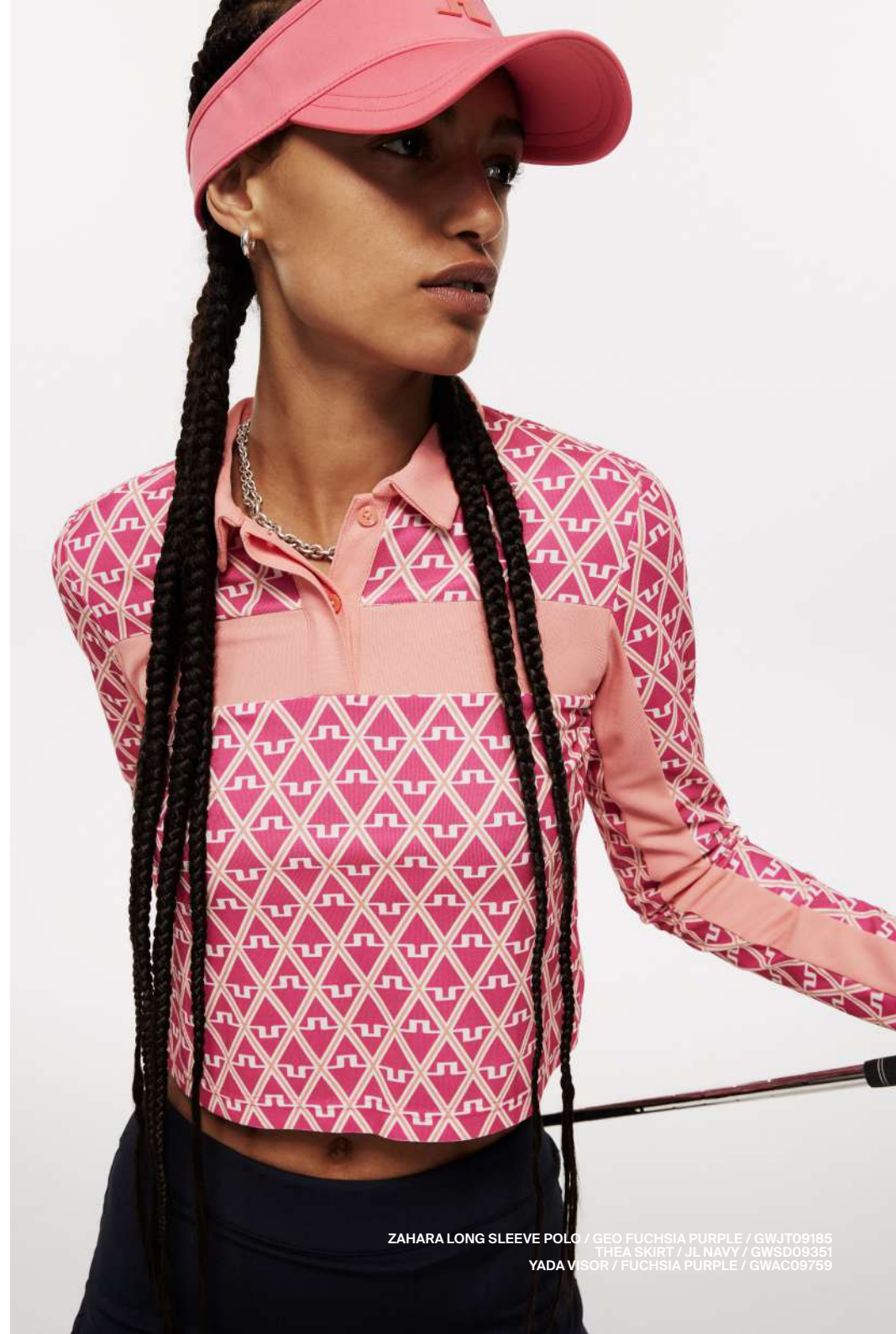


### ZAHARA LONG SLEEVE POLO GWJT09185 SPORT PIQUE

Our boxy new Zahara Long Sleeve polo gives an edgy look with our seasonal colors and prints for the more dared one.

- Boxy fit
- Hidden 3 button placket
- Cut and sewn panel at chest and sleeves
- Collar in shell fabric
- Knitted Soft Pique
- Moisture transportation
- Fast dry
- High comfort
- Cropped fit

Size: XS-XL  
Material: 100% Recycled Polyester  
165g/m2  
GRS, Ökotex100



ZAHARA LONG SLEEVE POLO / GEO FUCHSIA PURPLE / GWJT09185  
THEA SKIRT / JL NAVY / GWSD09351  
YADA VISOR / FUCHSIA PURPLE / GWAC09759



## JERSEY TOP



O492 ARUBA BLUE  
K056 WAX YELLOW

Q116 FUCHSIA PURPLE  
S086 BURNT CORAL

6855 JL NAVY  
Q116 FUCHSIA PURPLE

G016 TANGERINE TANGO  
0000 WHITE



### MOIRA POLO GWJT08997 RIB JERSEY

Knitted in a rib jersey with excellent stretch and softness, with yarn dyed stripes on chest and sleeve.

- Rib collar with contrast stripe
- 4 button placket
- Yarn dyed stripes at chest and sleeve
- Silicone Bridge print at chest
- Excellent stretch
- Moisture transportation
- Soft handfeel

Size: XS-XL  
Material: 90% Polyester, 10% Elastane/  
Spandex  
Ökotex100

## JERSEY TOP



O492 ARUBA BLUE  
K056 WAX YELLOW

9999 BLACK  
O501 ATOMIZER

O341 ESTATE BLUE  
O492 ARUBA BLUE

M073 PARADISE GREEN  
Q116 FUCHSIA PURPLE



### TEKLA CREW NECK TOP GWJT08999 NYLON TACTEL SPANDEX JERSEY

Our new style Tekla Top is a long sleeved crew neck style protecting you from the sun with 50 UPF. Made in our new nylon tadel spandex jersey.

- Crew neck
- Longsleeve
- Silicone bridge at chest
- J.Lindeberg silicone logo at sleeve
- Slim fit
- Moisture transportation
- Fast dry
- 4 way stretch
- Soft compression fabric
- Cooling effect
- UV +40

Size: XS-XL  
Material: 91% Polyamide/Nylon, 9%  
Elastane/Spandex 150g/m2  
Ökotex100

## JERSEY TOP



O501 ATOMIZER  
G016 TANGERINE TANGO

9999 BLACK  
0000 WHITE

S086 BURNT CORAL  
Q116 FUCHSIA PURPLE

O341 ESTATE BLUE  
O492 ARUBA BLUE

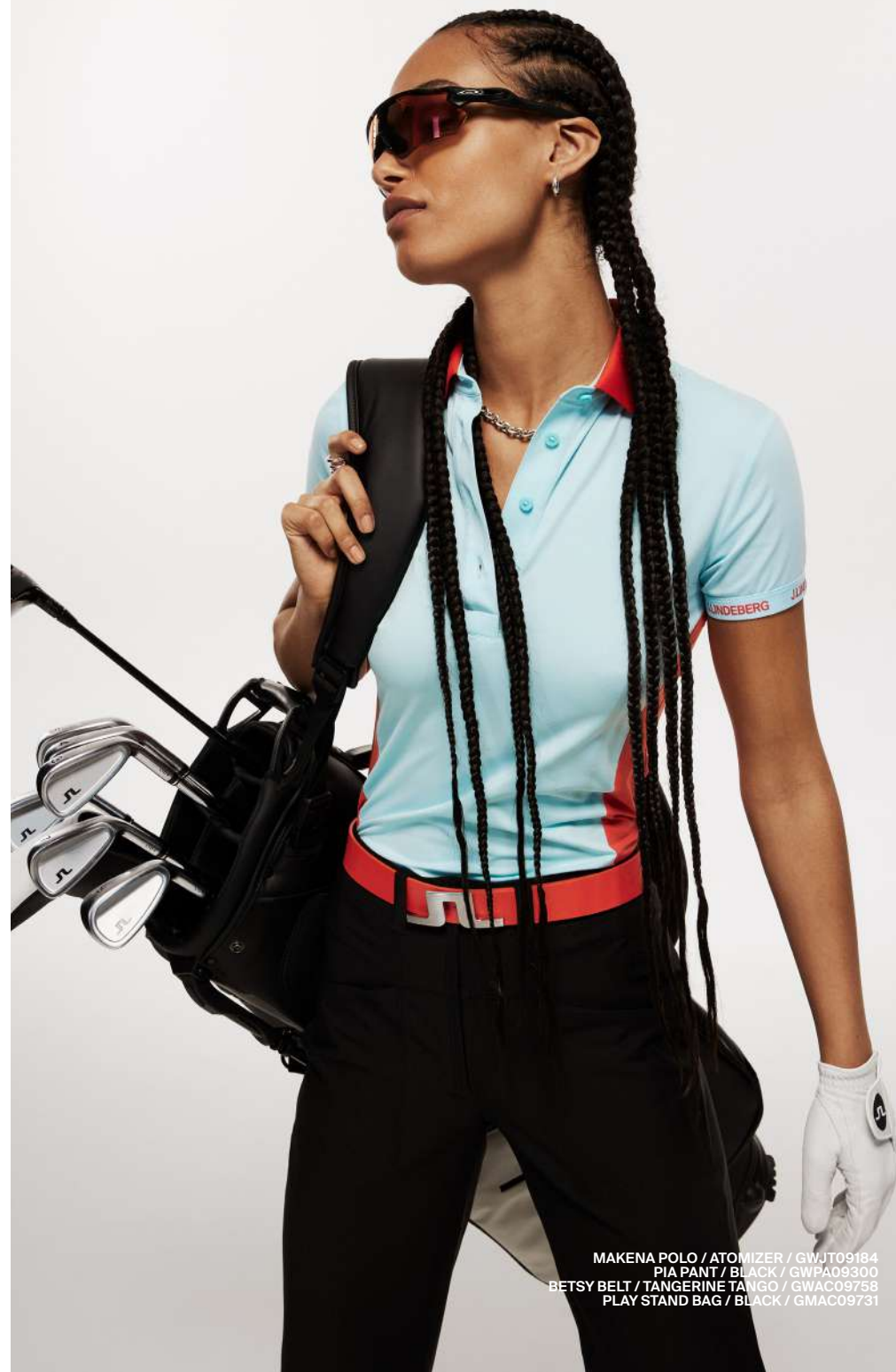


### MAKENA POLO GWJT09184 NYLON STRETCH JERSEY

Makena is our new to our polo shirts with a classic rib collar and color blocking design.

- 4 button placket
- J.Lindeberg branding at sleeve end
- Color blocking design
- 4 way stretch
- Wicking
- Soft hand feel
- Cooling effect

Size: XS-XL  
Material: 58% Nylon, 28% Polyester, 14%  
Elastane 130g/m2  
Ökotex100



MAKENA POLO / ATOMIZER / GWJT09184  
PIA PANT / BLACK / GWPA09300  
BETSY BELT / TANGERINE TANGO / GWAC09758  
PLAY STAND BAG / BLACK / GMAC09731

## JERSEY TOP



9999 BLACK  
0000 WHITE



0341 ESTATE BLUE  
0492 ARUBA BLUE



0000 WHITE  
G016 TANGERINE TANGO

### THABISA TOP GWJT09015 COOLING STRETCH NYLON

Thabisa long sleeve with a high neck, flattering cut and sewn panel in contrast color. Made from our stretchy cooling fabric.

- Mock neck
- Longsleeve
- Silicone Bridge at neck
- Colorblocking panels on sides and back
- Super lightweight
- Soft and airy hand feel
- Moisture transportation
- Fast dry

Size: XS-XL  
Material: 85% Nylon, 15% Elastane/  
Spandex 185g/m2  
Ökotex100



0502 NEPTUNE JACQUARD  
ATOMIZER  
G016 TANGERINE TANGO

W080 NEPTUNE JACQUARD  
BLACK  
0000 WHITE

A040 NEPTUNE JACQUARD  
LIGHT GREY  
9999 BLACK



### ALAYA JACQUARD POLO GWJT09013 LIGHTWEIGHT JACQUARD

Alaya Jacquard polo features an artwork knitted into the fabric without seams or application, for a unique look without compromising on the comfort.

- Traditional collar
- 4 button placket
- Silicone Bridge at chest
- All over jacquard knitted artwork
- Lightweight jacquard
- Soft and stretchy
- Fast dry
- Moisture transportation

Size: XS-XL  
Material: 92% Polyester, 8% Elastane/  
Spandex 150g/m2  
Ökotex100

## JERSEY TOP



0502 NEPTUNE JACQUARD  
ATOMIZER  
0000 WHITE

W080 NEPTUNE JACQUARD  
BLACK  
0501 ATOMIZER

A040 NEPTUNE JACQUARD  
LIGHT GREY  
9999 BLACK

6855 JL NAVY  
Q116 FUCHSIA PURPLE



### LERATO POLO GWJT09049 LIGHTWEIGHT JACQUARD

Lerato is this season statement piece with seasonal jacquard artwork and with chunky rib collar.

- Boxy fit
- 3 button placket
- Chunky jacquard knitted collar
- Jacquard rib placket with stripes
- 60 mm silicone Bridge at chest
- Jacquard artwork
- Wicking
- Fast dry

Size: XS-XL  
Material: 92% Polyester, 8% Elastane/  
Spandex 150g/m2  
Ökotex100



LERATO POLO / NEPTUNE JACQUARD ATOMIZER / GWJT09049  
JOLIE PANT / BLACK / GWPA09510  
BETSY BELT / TANGERINE TANGO / GWAC09758



## JERSEY TOP



6855 JL NAVY  
Q116 FUCHSIA PURPLE

G016 TANGERINE TANGO  
0000 WHITE

K056 WAX YELLOW  
O341 ESTATE BLUE

0000 WHITE  
6855 JL NAVY



### RAFIKI TOP GWJT09357 SEAMLESS JERSEY

Sport top Rafiki in a seamless construction and detailing. Minimal seams for high comfort and movement.

- Cropped
- Minimal seams
- Bridge logo at back
- Seamless
- Wicking

Size: XS-XL  
Material: 75% Polyester, 25% Elastane  
170g/m<sup>2</sup>  
Ökotex100



TAMARA MID LAYER / ARUBA BLUE / GWJS09456  
RAFIKI TOP / WAX YELLOW / GWJT09357  
ADINA SKIRT / WAX YELLOW / GWSD09294  
ALBA BIG VISOR / WAX YELLOW / GWAC09768

## JERSEY TOP



6855 JL NAVY  
0000 WHITE



0000 WHITE  
Q116 FUCHSIA PURPLE



### BAILY SEAMLESS POLO GWJT09398 SEAMLESS JERSEY

Our new seamless polo Bally with tonal diamond structure and rib collar for seamless yet classic look.

- Rib collar in contrast color
- Silicon Bridge at center back
- Jacquarded diamond artwork
- Seamless
- Wicking

Size: XS-XL  
Material: 75% Polyester, 25% Nylon  
170 g/m2  
Ökotex100



6855 JL NAVY  
0000 WHITE

K056 WAX YELLOW  
0341 ESTATE BLUE



0000 WHITE  
9999 BLACK



### IZARA POLO GWJT09001 WAVE RIB JERSEY OTTOMAN

Izara comes in a new fabric with mesh as base and wave structure for ultimate look.

- Rib collar with stripe detail at edge
- Concealed zip at front with statement puller
- Rib at sleeve opening
- Bridge logo at center back
- 4 way stretch
- Wicking
- Fast dry

Size: XS-XL  
Material: 80% Polyester, 20% Spandex  
190g/m2  
Ökotex100

## JERSEY TOP



6855 JL NAVY  
M073 PARADISE GREEN

K056 WAX YELLOW  
O341 ESTATE BLUE

O000 WHITE  
Q116 FUCHSIA PURPLE



### LILA SLEEVELESS TOP GWJT08979 WAVE RIB JERSEY OTTOMAN

Lila sleeveless polo comes in a new fabric with mesh as base and wave structure for ultimate look.

- Rib collar with jacquarded stripe
- 4 button placket
- Sleeveless
- Silicone Bridge print at back
- 4 way stretch
- Wicking
- Fast dry

Size: XS-XL  
Material: 80% Polyester, 20% Spandex  
190 g/m2  
Ökotex100



IZARA POLO / WAX YELLOW / GWJT09001  
MEGH SHORTS / ARUBA BLUE / GWPA09308  
BONNIE PRINT VISOR / LEOPARD ARUBA BLUE / GWAC09769  
HANNA BELT BAG / LEOPARD ARUBA BLUE / GWAC11253



## SHIRT TOP



6855 JL NAVY  
Q116 FUCHSIA PURPLE  
M073 PARADISE GREEN



### AKIA TOP GWST09859 HIGH VENT

Soft and airy ladies shirt top with polo collar and half zip in summery color combinations in a stretchy material.

- Polo collar with tipping
- Half zip
- Airy material
- Soft and stretchy
- Lightweight
- Moisture transportation
- Breathable
- 4 way stretch
- Fast dry
- PFC-free

Size: XS-XL  
Material: 96% Polyester, 4% Spandex  
162gr/m2  
Bluesign

## JERSEY SWEAT



O501 ATOMIZER  
E031 ALMOND MILK

9999 BLACK  
G016 TANGERINE TANGO

M073 PARADISE GREEN  
O000 WHITE

O000 WHITE  
O341 ESTATE BLUE



### SEASONAL JANICE MID LAYER GWJS08968 LIGHT MID

Our well performing style in popular Light Mid fabric is now offered in new seasonal colors.

- 2 way zipper with top logo puller
- Inserted bridge at back
- J.Lindeberg embroidery at chest
- Cut and sawn Bridge panel at back
- Branded elastic edge tape at hem & cuffs
- Brushed inside for comfort and warmth
- Moisture transportation
- Fast drying
- Stretch

Size: XS-XL  
Material: 85% Polyester, 15% Spandex  
170 g/m2  
Ökotex100

## JERSEY SWEAT



0492 ARUBA BLUE  
0341 ESTATE BLUE

0341 ESTATE BLUE  
0492 ARUBA BLUE

6855 JL NAVY  
0000 WHITE

0000 WHITE  
9999 BLACK



### LAURYN HALF ZIP MID LAYER GWJS10333 LIGHT MID

Presenting Lauryn, a half zip in our popular fabric Light Mid with panels in mesh fabric at sides for better ventilation.

- Silicone Bridge at chest and back neck
- Half zip
- Pocket with zipper
- Mesh panel at sides
- Brushed inside for comfort and warmth
- Moisture transportation
- Fast drying
- Stretch

Size: XS-XL  
Material: 85% Polyester, 15% Spandex  
170g/m2  
Ökotex100





# JERSEY SWEAT



0492 ARUBA BLUE  
K056 WAX YELLOW



9999 BLACK  
0000 WHITE



0000 WHITE  
E031 ALMOND MILK



## TAMARA MID LAYER GWJS09456 LIGHT MID

New style with rib panels and piping on the shoulders.

- 2 way zipper with top logo puller
- Contrast piping along sleeve
- Rib fabric panel along sleeve for extra stretch
- Silicone Bridge logo at chest
- Brushed inside for comfort and warmth
- Moisture transportation
- Fast drying
- Stretch

Size: XS-XL  
Material: 85% Polyester, 15% Spandex  
Panel: 90% Polyester, 10%  
170 g/m2  
Spandex, 236 g/m2  
Ökotex100



0492 ARUBA BLUE  
0000 WHITE

0000 WHITE  
9999 BLACK

## W AERIAL QUARTER HOOD GWJS11516 TX STRETCH FLEECE

Zipper hoodie in soft and comfortable fabrication.

- Zipper tab
- Side pockets with zippers
- Bridge on chest and hood
- Heavy brushed inside for warmth
- Stretch and flexible
- Moisture transportation
- Fast dry

Size: XS-XL  
Material: 93% Polyester, 7% Elastane/  
Spandex  
Ökotex100

# JERSEY SWEAT



9999 BLACK  
G016 TANGERINE TANGO

Q116 FUCHSIA PURPLE  
S086 BURNT CORAL

0000 WHITE  
O501 ATOMIZER



## FAYE MID LAYER GWJS09459 LUX BONDED

Mid layer with a modern mock neck and hidden ventilation cut out at back.

- Special rib collar
- Hidden zipper with diamond logo puller
- Ranglan sleeve
- Silicone Bridge print back neck
- Silicone J.Lindeberg logo at side
- Hidden ventilation cut out at back
- Stretch
- Fast dry
- Nice shine
- Soft

Size: XS-XL  
Material: 80% Polyester, 20% Elastane/  
Spandex 185 g/m2  
Ökotex100



6855 JL NAVY  
0000 WHITE

0000 WHITE  
6855 JL NAVY



## EMRAH SHORTS GWJS09465 LUX BONDED

New shorts in Lux bonded fabrication that gives a nice shape to the garment. It is high in waist and the leg a bit flared.

- High waist
- Side pockets
- Branded elastic waistband
- Flared leg
- Silicone Bridge
- Stretch
- Fast dry
- Nice shine
- Soft

Size: XS-XL  
Material: 80% Polyester, 20% Elastane/  
Spandex 185g/m2  
Ökotex100  
Measurement: Inseam length for size S: 8 cm

# JERSEY SWEAT



0492 ARUBA BLUE  
0341 ESTATE BLUE



9999 BLACK  
G016 TANGERINE TANGO



0497 NEPTUNE ATOMIZER  
0000 WHITE



9999 BLACK  
G016 TANGERINE TANGO



## FRANCESCA SHORT TIGHTS GWJS09467 LUX SCULPT

Crafted in shaping fabric Lux Sculpt with 4 way stretch. High waist shorts and hidden zipper at front.

- High-rise waist line
- Hidden zipper at front with Diamond logo puller
- J.Lindeberg silicone logo
- Inseam side pockets with zipper
- Shaping fabric
- 4 way stretch

## FRANCESCA PRINT SHORT TIGHTS GWJS09567 LUX SCULPT

Crafted in shaping fabric Lux Sculpt with 4 way stretch. High waist shorts and hidden zipper at front.

- High-rise waist line
- Hidden zipper at front with diamond logo puller
- J.Lindeberg silicone logo
- Inseam side pockets with zipper
- Shaping fabric
- 4 way stretch

## LOKI PANT GWJS09469 LUX SCULPT

New tights with flare leg and slit at bottom are made in our Lux Sculpt fabrication.

- Tight fitted in a shaping fabric
- Hidden side pocket with zippers
- Hidden front zipper with diamond logo puller slit at bottom leg
- High rise waist line
- J.Lindeberg silicone logo
- Shaping fabric
- 4 way stretch

Size: XS-XL  
Material: 66% Polyester, 34% Elastane/  
Spandex 210g/m2  
Ökotex100  
Measurement: Inseam length for size S: 24 cm

Size: XS-XL  
Material: 66% Polyester, 34% Elastane/  
Spandex 210 g/m2  
Ökotex100  
Measurement: Inseam length for size S: 24 cm

Size: XS-XL  
Material: 66% Polyester, 34% Elastane/  
Spandex 210 g/m2  
Ökotex100  
Measurement: Inseam length for size S: 83 cm

# JERSEY SWEAT



O492 ARUBA BLUE  
O341 ESTATE BLUE

Q116 FUCHSIA PURPLE  
O000 WHITE

6855 JL NAVY  
O000 WHITE

K056 WAX YELLOW  
O341 ESTATE BLUE

O000 WHITE  
6855 JL NAVY



## LEONOR MID LAYER GWJS09457 WAVE RIB JERSEY OTTOMAN

Leonor in wave rib jersey with 2-way full zip at front and contrast stripe cuffs and collar for look.

- 2-way full zip
- Statement puller
- Bridge logo at chest
- Striped cuffs and collar
- Firm stretch
- Rib structured fabric
- Moisture transportation

Size: XS-XL  
Material: 80% Polyester, 20% Spandex  
190 g/m2  
Ökotex100



## JERSEY SWEAT



9999 BLACK  
0000 WHITE

6855 JL NAVY  
0000 WHITE

K056 WAX YELLOW  
0000 WHITE



### VICE HOOD GWJS10351 SOFT POLY PIMA COTTON

Lightweight hood with kangaroo pocket and drawstrings at hood.

- Hood
- Print on chest
- Drawstring for adjustable hood
- Kangaroo pocket
- Rib at sleeve ending and bottom hem
- Lightweight
- Breathable
- Stretch

Size: XS-XL  
Material: 51% Polyester, 49% Cotton  
155g/m2  
Ökotex100



9999 BLACK  
0000 WHITE

6855 JL NAVY  
0000 WHITE

K056 WAX YELLOW  
0000 WHITE



### VICE SHORTS GWJS10352 SOFT POLY PIMA COTTON

Lightweight shorts with mesh lining and draw string at waist.

- Rib waistband
- Side pockets
- Print at left leg
- Inner shorts
- Lightweight
- Breathable
- Stretch

Size: XS-XL  
Material: 51% Polyester, 49% Cotton  
155g/m2  
Inner shorts: 88% Recycled Polyester, 12%  
Elastane/Spandex  
Ökotex100  
Measurement: Inseam length for size S: 13 cm



# JERSEY SWEAT



0000 WHITE

6855 JL NAVY



## NANCY SEAMLESS MID LAYER GWJS09691 SEAMLESS MID

Seamless style with diamond artwork knitted seamlessly in the fabric.

- 2-way full zip
- Statement puller
- Seamless diamond artwork
- Seamless
- Moisture transportation
- Fast dry

Size: XS-XL  
Material: 75% Polyester, 25% Nylon  
240g/m<sup>2</sup>



## JERSEY SWEAT



O341 ESTATE BLUE  
K056 WAX YELLOW



O341 ESTATE BLUE  
K056 WAX YELLOW



### DIANA HOOD GWJS09461 DIAGONALL TWILL

New color blocked style, made in our new sporty and functional jersey sweat fabrication.

- Full zip with diamond logo puller
- Hood
- Contrast pipings at cut seams at front
- Adjustable elastic at bottom hem
- Bridge print at back
- Moisture transportation
- Fast dry
- Stretch
- Super soft

Size: XS-XL  
Material: 93% Polyester, 7% Spandex  
270 g/m2  
Ökotex100

### LOU PANT GWJS09463 DIAGONALL TWILL

New color blocked style, made in our new sporty and functional jersey sweat fabrication.

- Mid waist
- Elastic waistband
- Contrast pipings at cut seams at front
- Bridge print at back waist line
- Firm stretch
- Rib structured fabric
- Moisture transportation

Size: XS-XL  
Material: 93% Polyester, 7% Spandex  
270 g/m2  
Ökotex100  
Measurement: Inseam length for size S: 78 cm



DIANA HOOD / ESTATE BLUE / GWJS09461  
LOU PANT / ESTATE BLUE / GWJS09463  
ASTRID BUCKET HAT / LEOPARD ARUBA BLUE / GWAC09764



# SKIRT DRESS

TAMARA MID LAYER / ARUBA BLUE / GWJS09456  
RAFIKI TOP / WAX YELLOW / GWJT09357  
ADINA SKIRT / WAX YELLOW / GWSD09294  
ALBA BIG VISOR / WAX YELLOW / GWAC09768



S086 BURNT CORAL

O341 ESTATE BLUE

G016 TANGERINE TANGO

K056 WAX YELLOW



## ADINA SKIRT GWSD09294 MICRO HIGH STRETCH

Adina is made in our popular Micro High Stretch. It has a generous knife pleat which allows for movement and flare.

- Side pocket with zipper
- Zipper opening at side
- Bridge logo
- Comes with inner shorts
- Lightweight
- Water repellent & fast dry
- Breathable
- Stretch

Size: XS-XL  
Material: 48% Polyester, 38% Recycled Polyester, 14% Elastane/  
Spandex 162 g/m2  
Inner Shorts: 92% Polyester, 8% Elastane  
Bluesign  
Measurement: CB length for size S is 40 cm



# SKIRT DRESS

PIP POLO / JL NAVY / GWJT09010  
 ADINA PRINT SKIRT / GEO JL NAVY GWSD09295  
 YADA VISOR / PARADISE GREEN / GWAC09759



S193 GEO FUCHSIA PURPLE  
 Q116 FUCHSIA PURPLE

O500 GEO JL NAVY  
 6855 JL NAVY

O495 LEOPARD ARUBA BLUE  
 O492 ARUBA BLUE

O497 NEPTUNE ATOMIZER  
 G016 TANGERINE TANGO



## ADINA PRINT SKIRT GWSD09295 MICRO HIGH STRETCH

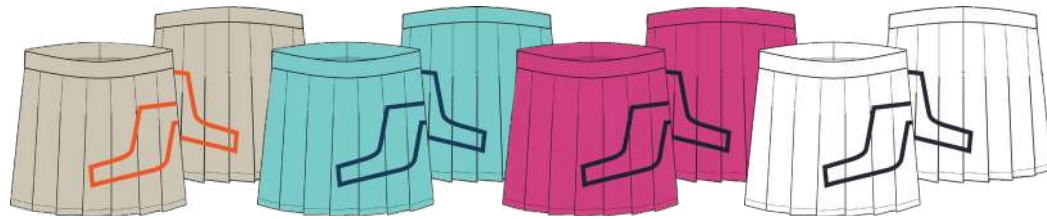
Adina is made in our popular Micro High Stretch. It has a generous knife pleat which allows for movement and flare.

- Side pocket with zipper
- Zipper opening at side
- Bridge logo
- Comes with inner shorts
- Lightweight
- Water repellent & fast dry
- Breathable & stretchy

Size: XS-XL  
 Material: 48% Polyester, 38% Recycled Polyester, 14% Elastane/ Spandex 162 g/m2  
 White Outline Bridge Swirl: 100% Polyester  
 Inner Shorts: 92% Polyester, 8% Elastane  
 Bluesign  
 Measurement: CB length for size S is 40 cm



# SKIRT DRESS



E031 ALMOND MILK  
G016 TANGERINE TANGO

O492 ARUBA BLUE  
O341 ESTATE BLUE

Q116 FUCHSIA PURPLE  
6855 JL NAVY

O000 WHITE  
9999 BLACK



## NAOMI SKIRT GWSD09293 MICRO HIGH STRETCH

This statement skirt has a generous knife pleat which allows for movement and flare. It has a large Bridge print branding at side for an extra edgy look.

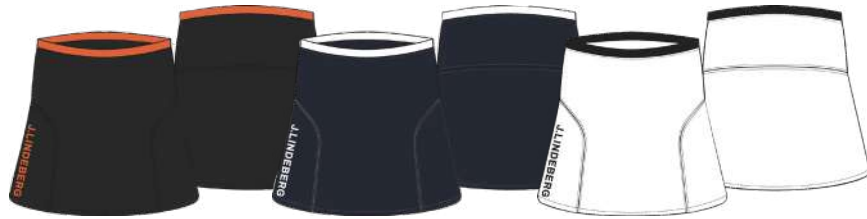
- Printed bridge logo
- Comes with inner shorts
- Side pocket with zipper
- Zipper opening at center back
- Lightweight
- Water repellent
- Breathable
- Stretch
- Fast dry

Size: XS-XL  
Material: 100% Polyester  
Inner Shorts: 92% Polyester,  
8% Elastane 168 g/m2  
Bluesign  
Measurement: CB length for size S is 40 cm





# SKIRT DRESS



9999 BLACK  
G016 TANGERINE TANGO

6855 JL NAVY  
0000 WHITE

0000 WHITE  
9999 BLACK



## THEMBA SKIRT GWSD09298 MICRO HIGH STRETCH

Themba is made in our popular Micro High Stretch.

- Side pocket
- Elastic
- Bridge logo
- Comes with inner shorts
- Lightweight
- Water repellent
- Breathable
- Stretch
- Fast dry

Size: XS-XL  
Material: 48% Polyester, 38% Recycled Polyester, 14% Elastane/ Spandex 162 g/m2  
Inner Shorts: 92% Polyester, 8% Elastane  
Bluesign  
Measurement: CB length for size S is 46 cm



O495 LEOPARD ARUBA BLUE  
O341 ESTATE BLUE



## THEMBA PRINT SKIRT GWSD09824 MICRO HIGH STRETCH

Themba is made in our popular Micro High Stretch.

- Side pocket with zipper
- Zipper opening at side
- Bridge logo
- Comes with inner shorts
- Lightweight
- Water repellent
- Breathable
- Stretch
- Fast dry

Size: XS-XL  
Material: 48% Polyester, 38% Recycled Polyester, 14% Elastane/ Spandex 162 g/m2  
Inner Shorts: 92% Polyester, 8% Elastane  
Bluesign  
Measurement: CB length for size S is 46 cm

# SKIRT DRESS



E031 ALMOND MILK  
G016 TANGERINE TANGO

O501 ATOMIZER  
9999 BLACK

9999 BLACK  
0000 WHITE

S086 BURNT CORAL  
0000 WHITE

O341 ESTATE BLUE  
O492 ARUBA BLUE

Q116 FUCHSIA PURPLE  
S086 BURNT CORAL

6855 JL NAVY  
0000 WHITE

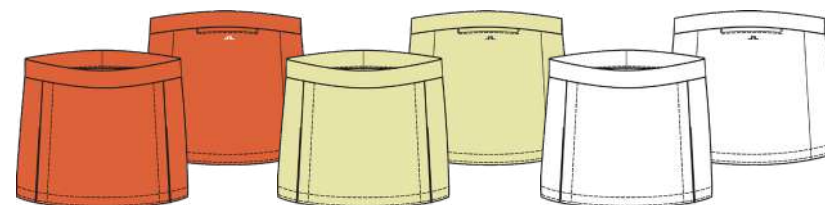
M073 PARADISE GREEN  
Q116 FUCHSIA PURPLE



## AMELIE SKIRT GWSD09350 TX JERSEY

All time favorite golf skirt made in our most loved fabric. This in short length in seasonal colors.

- 1 back pocket with zipper
- Embroidery Bridge logo at back
- Attached inner shorts
- Technical 4-way stretch
- Moisture transportation
- Fast dry



G016 TANGERINE TANGO  
0000 WHITE

K056 WAX YELLOW  
O341 ESTATE BLUE

0000 WHITE  
9999 BLACK

Size: XS-XL  
Material: 100% Polyester 170g/m2  
Inner shorts: 92% polyester 8% Spandex  
Okotex100  
Measurement: CB length for size S is 33 cm



# SKIRT DRESS



S193 GEO FUCHSIA PURPLE  
6855 JL NAVY

O500 GEO JL NAVY  
Q116 FUCHSIA PURPLE

O495 LEOPARD ARUBA BLUE  
O341 ESTATE BLUE

O497 NEPTUNE ATOMIZER  
0000 WHITE



## AMELIE PRINT SKIRT GWSD09352 TX JERSEY

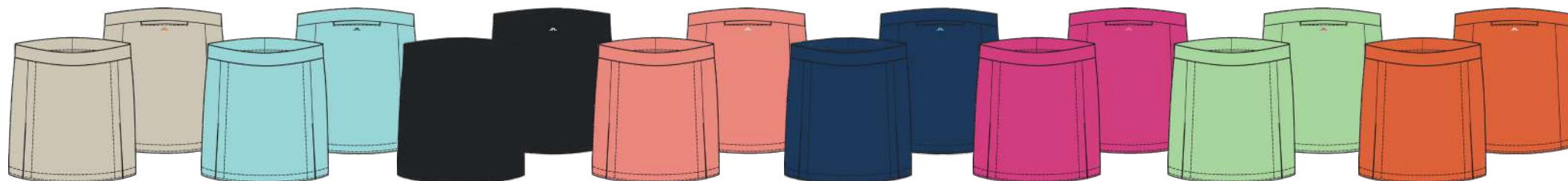
All time favorite golf skirt made in our most loved fabric. This in the shorter original length and seasonal print.

- 1 back pocket with zipper
- Embroidery Bridge logo at back
- Attached inner shorts
- Technical 4-way stretch
- Moisture transportation
- Fast dry

Size: XS-XL  
 Material: 100% Polyester 170g/m2  
 Inner shorts: 92% polyester 8% Spandex  
 Okotex100  
 Measurement: CB length for size S is 33 cm



# SKIRT DRESS



E031 ALMOND MILK  
G016 TANGERINE TANGO

O501 ATOMIZER  
9999 BLACK

9999 BLACK  
0000 WHITE

S086 BURNT CORAL  
0000 WHITE

O341 ESTATE BLUE  
O492 ARUBA BLUE

Q116 FUCHSIA PURPLE  
S086 BURNT CORAL

M073 PARADISE GREEN  
Q116 FUCHSIA PURPLE

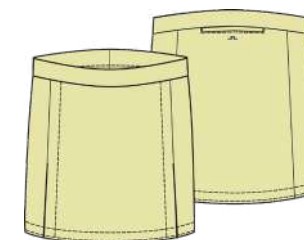
G016 TANGERINE TANGO  
0000 WHITE



## AMELIE MID SKIRT GWSD09349 TX JERSEY

All time favorite golf skirt made in our most loved fabric. This in mid length and seasonal colors.

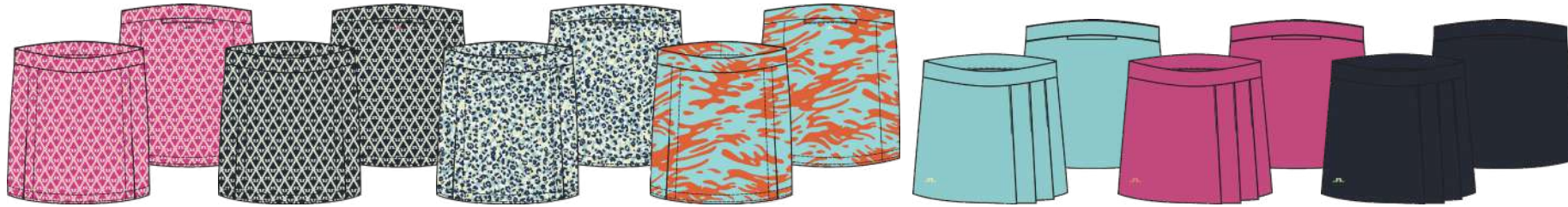
- 1 back pocket with zipper
- Embroidery Bridge logo at back
- Attached inner shorts
- Technical 4-way stretch
- Moisture transportation
- Fast dry



K056 WAX YELLOW  
O341 ESTATE BLUE

Size: XS-XL  
 Material: 100% Polyester 170g/m2  
 Inner shorts: 92% polyester 8%  
 Spandex  
 Ökotex100  
 Measurement: CB length for size S is 37 cm

# SKIRT DRESS



S193 GEO FUCHSIA PURPLE  
6855 JL NAVY

O500 GEO JL NAVY  
Q116 FUCHSIA PURPLE

O495 LEOPARD ARUBA BLUE  
O341 ESTATE BLUE

O497 NEPTUNE ATOMIZER  
0000 WHITE

O492 ARUBA BLUE  
K056 WAX YELLOW

Q116 FUCHSIA PURPLE  
S086 BURNT CORAL

6855 JL NAVY  
M073 PARADISE GREEN



## AMELIE MID PRINT SKIRT GWSD09354 TX JERSEY

All time favorite golf skirt made in our most loved fabric. This in mid length and seasonal print.

- 1 back pocket with zipper
- Embroidery Bridge logo at back
- Attached inner shorts
- Technical 4-way stretch
- Moisture transportation
- Fast dry

Size: XS-XL  
Material: 100% Polyester 170g/m2  
Inner shorts: 92% polyester 8% Spandex  
Ökotex100  
Measurement: CB length for size S is 37 cm

## THEA SKIRT GWSD09351 TX JERSEY

Thea Skirt has attached inner shorts and an inseam back pocket with zipper. Pleats on the side for better movement and flexibility.

- 1 back pocket with zipper
- 3 pleats at front
- Silicone Bridge print at bottom hem
- Attached inner shorts
- Technical 4-way stretch
- Moisture transportation
- Fast dry

Size: XS-XL  
Material: 100% Polyester 170g/m2  
Inner shorts: 92% Polyester, 8% Spandex  
Ökotex100  
Measurement: CB length for size S is 37 cm



## SKIRT DRESS



0341 ESTATE BLUE  
0492 ARUBA BLUE

M073 PARADISE GREEN  
6855 JL NAVY

0000 WHITE  
9999 BLACK



### DOLORES DRESS GWSD09466 TX JERSEY

Dolores is our new sporty dress with jacquard rib collar.

- Rib collar with jacquard stripe
- Concealed zip pockets
- 3 hidden button placket
- 40 mm silicone Bridge at waist
- Comes with inner shorts
- Technical 4-way stretch
- Moisture transportation
- Fast dry

Size: XS-XL  
Material: 100% Polyester 170 g/m2  
Inner shorts and pocket lining:  
92% Polyester 8% Elastan  
Ökotex100  
Measurement: CB length for size S is 85,5 cm



0492 ARUBA BLUE  
0341 ESTATE BLUE

S086 BURNT CORAL  
Q116 FUCHSIA PURPLE

6855 JL NAVY  
0000 WHITE

0000 WHITE  
6855 JL NAVY



### KEISHA SKIRT GWSD09470 LUX BONDED

Kesisha with stitched down pleats with a nice slit at front side. Skirt in our favorite Lux Bonded fabric for ultimate comfort. Branding at waist for a cool look.

- Hidden pocket at side
- J.Lindeberg branding at waist
- Stitched down pleats
- Attached inner shorts
- Moisture transportation
- Fast dry
- Stretch
- Super soft

Size: XS-XL  
Material: 80% Polyester, 20% Elastane/  
Spandex 210g/m2  
Ökotex100  
Inner shorts: 92% polyester  
8% Spandex  
Measurement: CB length for size S is 39,5 cm

## SKIRT DRESS



0492 ARUBA BLUE  
0341 ESTATE BLUE

Q116 FUCHSIA PURPLE  
6855 JL NAVY

6855 JL NAVY  
0000 WHITE

0000 WHITE  
6855 JL NAVY



### KANAI DRESS GWSD09511 LUX BONDED

Kanai is an A-lined skirtdress with contrast collar and zip. Long pleats on the skirtpart for a flattering look and comfort.

- A-line shaped
- Long pleat skirt design
- Side pocket with zip
- Front zip with diamond logo puller
- Comes with inner shorts
- Moisture transportation
- Fast dry
- Stretch
- Super soft

Size: XS-XL  
Material: 80% Polyester, 20% Elastane/  
Spandex 210g/m2  
Ökotex100  
Inner shorts: 92% polyester  
8% Spandex  
Measurement: CB length for size S is 85,5 cm



PIP POLO / JL NAVY / GWJT09010  
ADINA PRINT SKIRT / GEO JL NAVY GWSD09295  
YADA VISOR / PARADISE GREEN / GWAC09759



## SKIRT DRESS



E031 ALMOND MILK  
G016 TANGERINE TANGO

O492 ARUBA BLUE  
K056 WAX YELLOW

6855 JL NAVY  
0000 WHITE

M073 PARADISE GREEN  
Q116 FUCHSIA PURPLE

O495 LEOPARD ARUBA BLUE  
O341 ESTATE BLUE

O497 NEPTUNE ATOMIZER  
0000 WHITE



### JASMIN DRESS GWSD09355 LUX SCULPT

Jasmin is the ultimate dress that gives a feminine look and winner for many seasons.

- 2 side pockets with zipper
- Sleeveless
- A-shape
- Silicone Bridge print at bottom
- Comes with inner shorts
- Shaping fabric
- 4 way stretch

Size: XS-XL  
Material: 66% Polyester, 34% Elastane/  
Spandex 210 g/m2  
Inner short fabric: 92%  
Polyester, 8% Spandex  
Ökotex100  
Measurement: CB length for size S is 85 cm

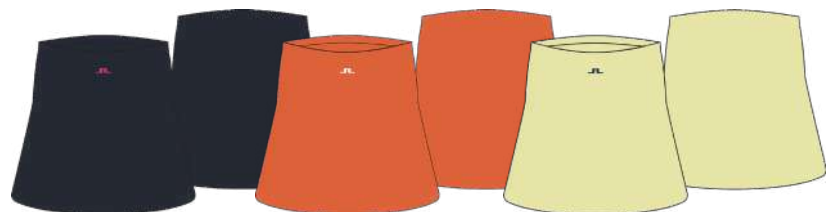
### JASMIN PRINT DRESS GWSD09356 LUX SCULPT

Jasmin is the ultimate dress that gives a feminine look and winner for many seasons. Here in our seasonal print.

- 2 side pockets with zipper
- Sleeveless
- A-shape
- Silicone Bridge print at bottom
- Comes with inner shorts
- Shaping fabric
- 4 way stretch

Size: XS-XL  
Material: 66% Polyester, 34% Elastane/  
Spandex 210 g/m2  
Inner short fabric: 92%  
Polyester, 8% Spandex  
Ökotex100  
Measurement: CB length for size S is 85 cm

## SKIRT DRESS



6855 JL NAVY  
Q116 FUCHSIA PURPLE

G016 TANGERINE TANGO  
0000 WHITE

K056 WAX YELLOW  
O341 ESTATE BLUE



### RAPHAELA MID SKIRT GWSD09410 SOFT SCULPT JERSEY

Raphaela is a basic, yet sophisticated and clean with sculpting fabric for ultimate look.

- Hidden zip at side
- Logo at center front
- Attached inner shorts
- 4 way stretch
- Moisture transportation
- Fast dry

Size: XS-XL  
Material: 78% Polyester, 22% Spandex  
270g/m2  
Inner shorts: 92% polyester  
8% Spandex  
Ökotex100  
Measurement: CB length for size S is 40,5 cm



9999 BLACK  
O501 ATOMIZER

6855 JL NAVY  
0000 WHITE

K056 WAX YELLOW  
O341 ESTATE BLUE



### MAXIME DRESS GWSD09468 SPORT JERSEY

Maxime comes in contrast color side panels and back, new outline on sleeves and cut out a back.

- 1 side pockets with zipper
- Short sleeves
- A-shape
- Silicone Bridge print at chest
- Cut out at back
- Comes with inner shorts
- 4 way stretch
- Moisture transportation
- Fast dry

Size: XS-XL  
Material: 79% Polyester, 21% Elastane/  
Spandex 240 g/m2  
Inner short fabric: 92%  
Polyester, 8% Spandex  
Ökotex100  
Measurement: CB length for size S is 85 cm

## SKIRT DRESS



9999 BLACK  
0501 ATOMIZER

0341 ESTATE BLUE  
K056 WAX YELLOW

0000 WHITE  
9999 BLACK



## EBONY DRESS GWSD09460 SPORT JERSEY

Ebony dress in our sport jersey fabric with bomber collar and concealed zip with our logo puller.

- 1 side pockets with zip
- Sleeveless
- A-shape
- Conceal zipper at front with statement puller
- Bomber collar
- Comes with inner shorts
- 4 way stretch
- Moisture transportation
- Fast dry

Size: XS-XL  
Material: 79% Polyester, 21% Elastane/  
Spandex 240 g/m2  
Inner short fabric: 92%  
Polyester, 8% Spandex  
Ökotex100  
Measurement: CB length for size S is 85,5 cm



PIP POLO / JL NAVY / GWJT09010  
ADINA PRINT SKIRT / GEO JL NAVY GWSD09295  
YADA VISOR / PARADISE GREEN / GWAC09759





# SKIRT DRESS



9999 BLACK  
G016 TANGERINE TANGO

Q116 FUCHSIA PURPLE  
M073 PARADISE GREEN

0000 WHITE  
6855 JL NAVY



## GAYLE SKIRT GWSD09462 PLEATED JERSEY

New pleated skirt Gayle with hidden zip at side and Bridge logo at center front.

- Side pocket
- Silicone Bridge logo at bottom hem
- All over pleats
- Inner shorts attached
- Pleated mesh
- Moisture transportation
- Fast dry

Size: XS-XL  
Material: 100% Polyester 140g/m2  
Inner shorts: 92% Polyester,  
8% Spandex  
Ökotex100  
Measurement: CB length for size S is 40 cm



9999 BLACK  
0000 WHITE

6855 JL NAVY  
0000 WHITE

0000 WHITE  
6855 JL NAVY

## HARLOW SKIRT GWSD11524 LIGHT PIQUE

New style for this season Harlow Skirt in our new lightweight pique fabric with elastic branded waistband.

- Branded waistband
- Stitched down pleats
- Back pocket
- Lightweight
- Moisture transportation
- Fast dry

Size: XS-XL  
Material: 100% Polyester 157g/m2  
Inner shorts: 92% Polyester 8% Elastan  
Pocket lining: 92% Polyester 8% Elastan  
Ökotex100  
Measurement: CB length for size S is 33 cm

# SKIRT DRESS



9999 BLACK  
E031 ALMOND MILK



## ABUEL SKIRT GWSD09528 2L STRETCH

Skirt with a soft and elastic mesh lining. Rainproof, windproof and breathable 4-way stretch fabric.

- Two way waterproof zipper for good comfort
- J.Lindeberg print in contrast
- Stretch lining
- Waterproof
- Windproof
- Fully seamsealed
- 4-way stretch
- PFC-free
- Waterproof 20K
- Breathability 20K

Size: XS-XL  
Material: 100% Polyester 125gr/m2  
Bluesign  
Measurement: CB length for size S is 43,7 cm



KIJANA KNITTED DRESS / ESTATE BLUE / GWSD09342  
SIRI BUCKET HAT / WHITE / GWAC09760



## SKIRT DRESS



0341 ESTATE BLUE  
0492 ARUBA BLUE

0000 WHITE  
G016 TANGERINE TANGO



### KIJANA KNITTED DRESS GWSD09342 VISCOSE NYLON

New Kijana knitted dress made in our lightweight viscose nylon quality to bridge fashion and sport on the course.

- Intarsia knitted stripes
- Intarsia logo at chest
- Sleeveless
- A-Shape
- Comes with innershorts
- 14gg
- Lightweight

Size: XS-XL  
Material: 65% Viscose/Rayon, 35%  
Polyamide/Nylon  
Inner short fabric: 92%  
Polyester, 8% Elastane  
Ökotex100  
Measurement: CB length for size S is 88 cm



KIJANA KNITTED DRESS / ESTATE BLUE / GWSD09342  
SIRI BUCKET HAT / WHITE / GWAC09760



# SKIRT DRESS



O492 ARUBA BLUE  
O341 ESTATE BLUE

Q116 FUCHSIA PURPLE  
S086 BURNT CORAL

6855 JL NAVY  
0000 WHITE



0000 WHITE  
6855 JL NAVY



## EMMA KNITTED SKIRT GWSD10323 VISCOSE NYLON

New Emma Knitted Skirt is an update from our well performing knit skirts. Now improved with lightweight body and thinner elastic in waistband for best performance.

- New lightweight body
- Thin elastic in waistband
- Attached inner shorts with pocket
- Intarsia knitted Bridge at waistband
- 16gg
- Lightweight

Size: XS-XL  
Material: 75% Viscose/Rayon, 25% Polyamide/Nylon  
Inner Short fabric: 92% Polyester, 8% Elastane  
Measurement: CB length for size S is 37 cm

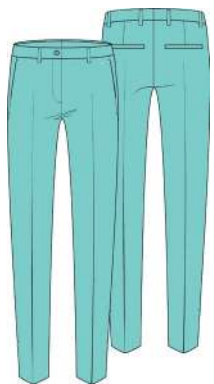
## APER KNITTED SKIRT GWSD09344 UV REACTIVE YARN

New statement skirt knitted with innovative UV-Reactive yarn in a diamond artwork that changes colour when exposed to UV-Light. Shop-light: White. UV-Light: Burnt coral.

- Updated thin elastic at waistband
- Knitted in bridge logo at waistband
- Attached inner shorts with side pocket
- Matching set with Thorina knitted cardigan
- 16gg
- Lightweight
- UV-Reactive yarn

Size: XS-XL  
Material: 80% Viscose, 20% Nylon  
Inner Short fabric: 92% Polyester, 8% Elastane  
Ökotex100  
Measurement: CB length for size S is 37 cm

# PANTS



0492 ARUBA BLUE



9999 BLACK



0341 ESTATE BLUE



Q116 FUCHSIA PURPLE



6855 JL NAVY



M073 PARADISE GREEN



G016 TANGERINE TANGO



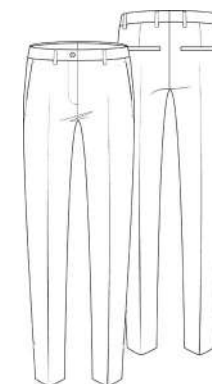
K056 WAX YELLOW

## PIA PANT GWPA09300 MICRO HIGH STRETCH

Pia is made in our Micro High Stretch, a lightweight stretch twill structure fabric.

- Mid-rise waistline
- Side pockets with zippers
- Back pockets
- Zippers at bottom hem
- Lightweight
- Water repellent
- Breathable
- Stretch
- Fast dry

Size: 24-34  
 Material: 48% Polyester, 38% Recycled Polyester, 14% Elastane/  
 Spandex 163 g/m<sup>2</sup>  
 White: 100% Polyester  
 Bluesign  
 Measurement: Inseam length for size 27: 70 cm



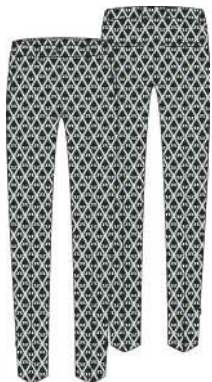
0000 WHITE



# PANTS



S193 GEO FUCHSIA PURPLE  
Q116 FUCHSIA PURPLE



O500 GEO JL NAVY  
6855 JL NAVY



O495 LEOPARD ARUBA BLUE  
O341 ESTATE BLUE



O497 NEPTUNE ATOMIZER  
G016 TANGERINE TANGO



## PIA PRINT PANT GWPA09301 MICRO HIGH STRETCH

Pia is made in our Micro High Stretch, a lightweight stretch twill structure fabric.

- Mid-rise waistline
- Side pockets with zippers
- Back pockets
- Zippers at bottom hem
- Lightweight
- Water repellent
- Breathable
- Stretch
- Fast dry

Size: 24-34  
 Material: 48% Polyester, 38% Recycled Polyester, 14% Elastane/  
 Spandex 163 g/m2  
 White: 100% Polyester  
 Bluesign  
 Measurement: Inseam length for size 27: 70 cm



# PANTS



E031 ALMOND MILK

O492 ARUBA BLUE

9999 BLACK

O341 ESTATE BLUE

Q116 FUCHSIA PURPLE

6855 JL NAVY

M073 PARADISE GREEN

K056 WAX YELLOW

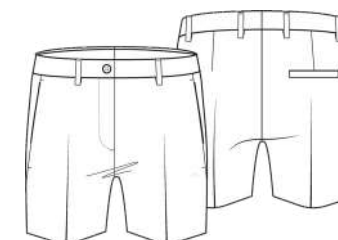


## GWEN SHORTS GWPA09304 MICRO HIGH STRETCH

This well received style is made in our Micro High Stretch, a lightweight stretch fabric with a subtle twill structure for a fashionable look.

- Mid-rise waistline
- Pockets at front
- One back pocket
- Bridge logo
- Lightweight
- Water repellent & fast dry
- Breathable
- Stretch

Size: 24-34  
 Material: 48% Polyester, 38% Recycled Polyester, 14% Elastane/  
 Spandex 163 g/m2  
 White: 100% Polyester  
 Bluesign  
 Measurement: Inseam length for size 27 is 9 cm



0000 WHITE

# PANTS



S193 GEO FUCHSIA PURPLE  
Q116 FUCHSIA PURPLE

O500 GEO JL NAVY  
6855 JL NAVY

O495 LEOPARD ARUBA BLUE  
O341 ESTATE BLUE

O497 NEPTUNE ATOMIZER  
G016 TANGERINE TANGO



## GWEN PRINTED SHORTS GWPA09305 MICRO HIGH STRETCH

This well received style is made in our Micro High Stretch, a lightweight stretch fabric with a subtle twill structure for a fashionable look.

- Mid-rise waistline
- Pockets at front
- One back pocket
- Bridge logo
- Lightweight
- Water repellent & fast dry
- Breathable
- Stretch

Size: 24-34  
 Material: 48% Polyester, 38% Recycled Polyester, 14% Elastane/  
 Spandex 163 g/m<sup>2</sup>  
 White: 100% Polyester  
 Bluesign  
 Measurement: Inseam length for size 27 is 9 cm

# PANTS



E031 ALMOND MILK

O492 ARUBA BLUE

9999 BLACK

O341 ESTATE BLUE

Q116 FUCHSIA PURPLE

6855 J.L. NAVY

M073 PARADISE GREEN

K056 WAX YELLOW



## GWEN LONG SHORTS GWPA09306 MICRO HIGH STRETCH

This well received style is made in our Micro High Stretch, a lightweight stretch fabric with a subtle twill structure for a fashionable look.

- Mid-rise waistline
- Pockets at front
- One back pocket
- Bridge logo
- Lightweight
- Water repellent & fast dry
- Breathable
- Stretch

Size: 24-34  
 Material: 48% Polyester, 38% Recycled Polyester, 14% Elastane/  
 Spandex 163 g/m2  
 White: 100% Polyester  
 Bluesign  
 Measurement: Inseam length for size 27 is 16,5 cm



0000 WHITE

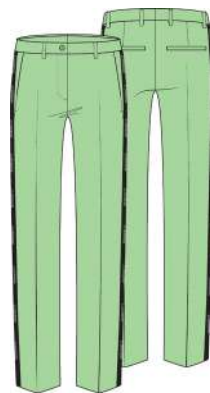
# PANTS



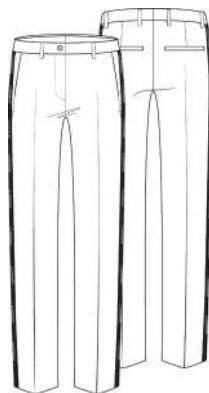
9999 BLACK  
0000 WHITE



6855 JL NAVY  
0000 WHITE



M073 PARADISE GREEN  
9999 BLACK



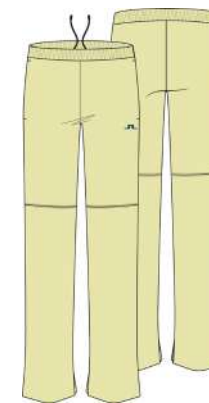
0000 WHITE  
9999 BLACK



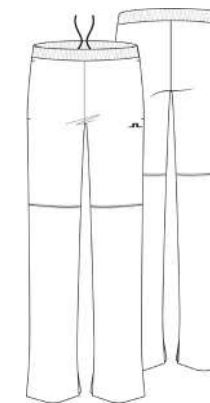
9999 BLACK  
O501 ATOMIZER



6855 JL NAVY  
0000 WHITE



K056 WAX YELLOW  
O492 ARUBA BLUE



0000 WHITE  
9999 BLACK

## MEGHAN SIDE STRIPE PANT GWPA09303 MICRO HIGH STRETCH

Meghan is made in our Micro High Stretch, a light-weight stretch twill structure fabric.

- Mid-rise waistline
- Side pockets with zippers
- Back pockets
- Side stripe with logo
- Bridge logo
- Lightweight
- Water repellent
- Breathable
- Stretch
- Fast dry

Size: 24-34  
Material: 48% Polyester, 38% Recycled Polyester, 14% Elastane/ Spandex 163 g/m2  
White: 100% Polyester  
Bluesign  
Measurement: Inseam length for size 27: 76 cm

## FIONA PULL ON PANT GWPA09309 MICRO HIGH STRETCH

Fiona pull on pant is made in our Micro High Stretch, a lightweight stretch twill structure fabric.

- Mid-rise waistline
- Side pockets
- Back pockets
- Drawstring
- Lightweight
- Water repellent
- Breathable
- Stretch
- Fast dry

Size: XS-XL  
Material: 48% Polyester, 38% Recycled Polyester, 14% Elastane/ Spandex 163 g/m2  
White: 100% Polyester  
Bluesign  
Measurement: Inseam length for size S: 78 cm

# PANTS



9999 BLACK



O341 ESTATE BLUE



Q116 FUCHSIA PURPLE



6855 JL NAVY



9999 BLACK



O341 ESTATE BLUE



G016 TANGERINE TANGO



## ELENA JOGGER PANT GWPA09302 DOUBLE WEAVE STRETCH

Elena jogger pant with cuffed leg opening for a comfortable yet sporty look.

- Mid-rise waistline
- Side pockets with zippers
- Back pockets
- Zippers at bottom hem
- Lightweight
- Water repellent
- Breathable
- Stretch
- Fast dry

Size: 24-34  
 Material: 91% Recycled Polyester, 9% Elastane/Spandex 163 g/m2 Bluesign,GRS  
 Measurement: Inseam length for size 27: 76 cm

## NEA PULL ON GOLF PANT GWPA09307 DOUBLE WEAVE STRETCH

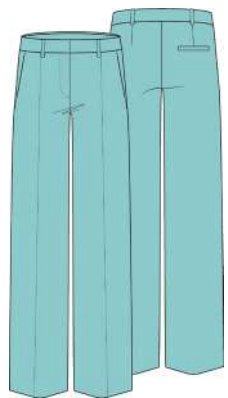
Nea pull on style pant is made in a super light-weight fabric with 4-way stretch for ultimate comfort. The inside structure helps to transport moisture to keep you dry and comfortable.

- Mid-rise waistline
- Pull-on pant
- Side pockets with zippers
- Slit at bottom hem
- Bridge logo in raised silicone print
- Lightweight
- Water repellent
- Breathable and fast dry
- Stretch
- Windbreaker

Size: 24-34  
 Material: 91% Recycled Polyester, 9% Elastane/Spandex 127 g/m2 Bluesign,GRS  
 Measurement: Inseam length for size 27: 70 cm



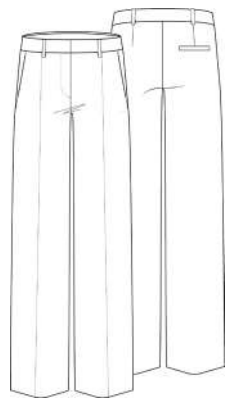
# PANTS



0492 ARUBA BLUE



9999 BLACK



0000 WHITE

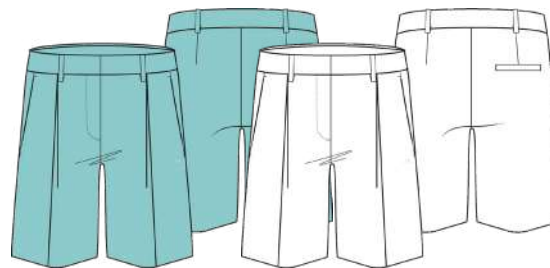


## JOLIE PANT GWPA09510 LIGHT POLY STRETCH RECYCLED

This new style in a lightweight stretch fabric with classic pant features such as a slightly wider leg and a pleat at front leg.

- High-rise waistline
- Pockets at front
- One back pocket
- Bridge logo
- Lightweight
- Water repellent
- Breathable
- Stretch
- Fast dry

Size: 24-34  
Material: 100% Polyester 163 g/m2  
Bluesign  
Measurement: Inseam length for size 27: 79 cm



0492 ARUBA BLUE



0000 WHITE



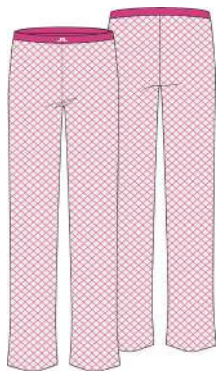
## MEGH SHORTS GWPA09308 LIGHT POLY STRETCH RECYCLED

This new style in a lightweight stretch fabric with classic bermuda short features such as a slightly wider leg and a pleat at front leg.

- High-rise waistline
- Pockets at front
- One back pocket
- Bridge logo
- Lightweight
- Water repellent
- Breathable
- Stretch
- Fast dry

Size: 24-34  
Material: 100% Polyester 163 g/m2  
Bluesign  
Measurement: Inseam length for size 27: 26 cm

## PANTS



Q116 FUCHSIA PURPLE  
0000 WHITE



### KORINE KNITTED PANT GWPA09345 VISCOSE/POLYESTER BLEND

New croquet knitted statement pants in matching set with Sindra knitted shirt.

- Croquet knitted
- Elastic waistband
- Knitted in logo at waistband
- Attached innershorts
- 16gg
- Soft
- Stretchy

Size: XS-XL  
Material: 72% Viscose/Rayon, 28% Polyester  
Inner Short fabric: 92% Polyester, 8% Elastane



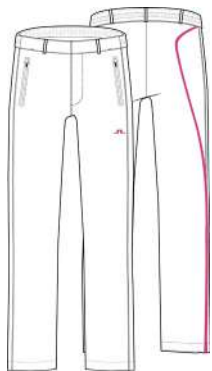
TAMARA MID LAYER / ARUBA BLUE / GWJS09456  
RAFIKI TOP / WAX YELLOW / GWJT09357  
ADINA SKIRT / WAX YELLOW / GWSD09294  
ALBA BIG VISOR / WAX YELLOW / GWAC09768



# PANTS



9999 BLACK  
0501 ATOMIZER



0000 WHITE  
Q116 FUCHSIA PURPLE



6855 JL NAVY  
0000 WHITE



0495 LEOPARD ARUBA BLUE  
0341 ESTATE BLUE



## COREY PANTS GWPA10114 SCHOELLER 3L

Rainproof pants with contrast seam tapes. Keeps you dry in the rain. Schoeller 3L.

- Zip at fly
- Elastic at waistband
- Beltloops
- Aquaguard zips at pockets and bottom leg
- Fully seamsealed
- Waterproof 20K
- Breathability 20K
- Ecorepel Bio
- PC-free

Size: XS-XL  
Material: 79% Polyamide/Nylon, 21% Polyurethane 147gr/m2  
Measurement: Inseam length for size 27 is 80 cm

## EVERTINE RAIN PANT GWPA09692 2L STRETCH

These best selling rain pants in lightweight fabric, with fully taped seams will keep you dry in all weather. Waterproof, windproof and breathable 4-way stretch.

- Zip at fly
- Elastic at waistband
- Beltloops
- Zip and adjustment at bottom leg
- Handpockets with zippers
- Bridge logo
- Waterproof 20K
- Breathability 20K
- Fully seamsealed
- 4-way stretch

Size: XS-XL  
Material: 100% Polyester 125gr/m2 Bluesign  
Measurement: Inseam length for size 27 is 75,5 cm

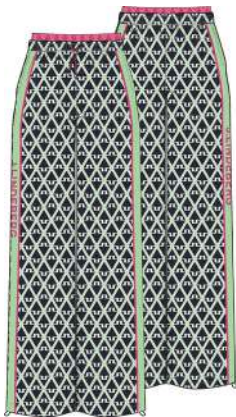
## EVERTINE RAIN PANT PRINT GWPA09693 2L STRETCH

These best selling rain pants in lightweight fabric, with fully taped seams will keep you dry in all weather. Waterproof, windproof and breathable 4-way stretch.

- Zip at fly
- Elastic at waistband
- Zip and adjustment at bottom leg
- Handpockets
- Bridge logo
- Signature all over print
- Waterproof 20K
- Breathability 20K
- Fully seamsealed
- 4-way stretch

Size: XS-XL  
Material: 100% Polyester 125gr/m2 Bluesign  
Measurement: Inseam length for size 27 is 75,5 cm

## PANTS



O500 GEO JL NAVY  
M073 PARADISE GREEN



### MIRA PANT GWPA09526 STRETCH SHIELD

Stretchy and comfortable trouser in signature all over print.

- Elastic waistband for a snug fit
- Drawcords waist
- Drawcords at bottom legs
- Side pockets with zippers
- Textprint at right hand leg
- Lightweight
- Water repellent
- Windproof
- Stretch
- PFC-free

Size: XS-XL  
Material: 96% Polyester, 4% Spandex  
49gr/m2  
Ökotex100  
Measurement: Inseam length for size 27 is  
77 cm



EVERTINE RAIN JACKET PRINT / LEOPARD ARUBA BLUE / GWOW09711  
ASA SOFT COMPRESSION TOP / WAX YELLOW / GWJT09003  
FRANCESCA SHORT TIGHTS / ARUBA BLUE / GWJS09467 VIKTOR VISOR / WAX YELLOW / GMAC09441



# KNITWEAR



9999 BLACK

6855 JL NAVY

U199 LIGHT GREY MELANGE

K056 WAX YELLOW

0000 WHITE



## AMAYA KNITTED SWEATER GWKW09941 TOUR MERINO

Our classic v-neck merino wool sweater, in seasonal colors. This sweater works perfect separately or as a layering piece.

- Fully fashion details
- Embroidered logo at chest
- Rib at bottom and sleeve end
- Tollegno Yarn
- 14 gg
- Natural odour control
- Natural moisture management
- Natural thermo-regulation
- Soft

Size: XS-XL  
Material: 100% Wool  
Ökotex100



## KNITWEAR



O492 ARUBA BLUE  
K056 WAX YELLOW

Q116 FUCHSIA PURPLE  
S086 BURNT CORAL

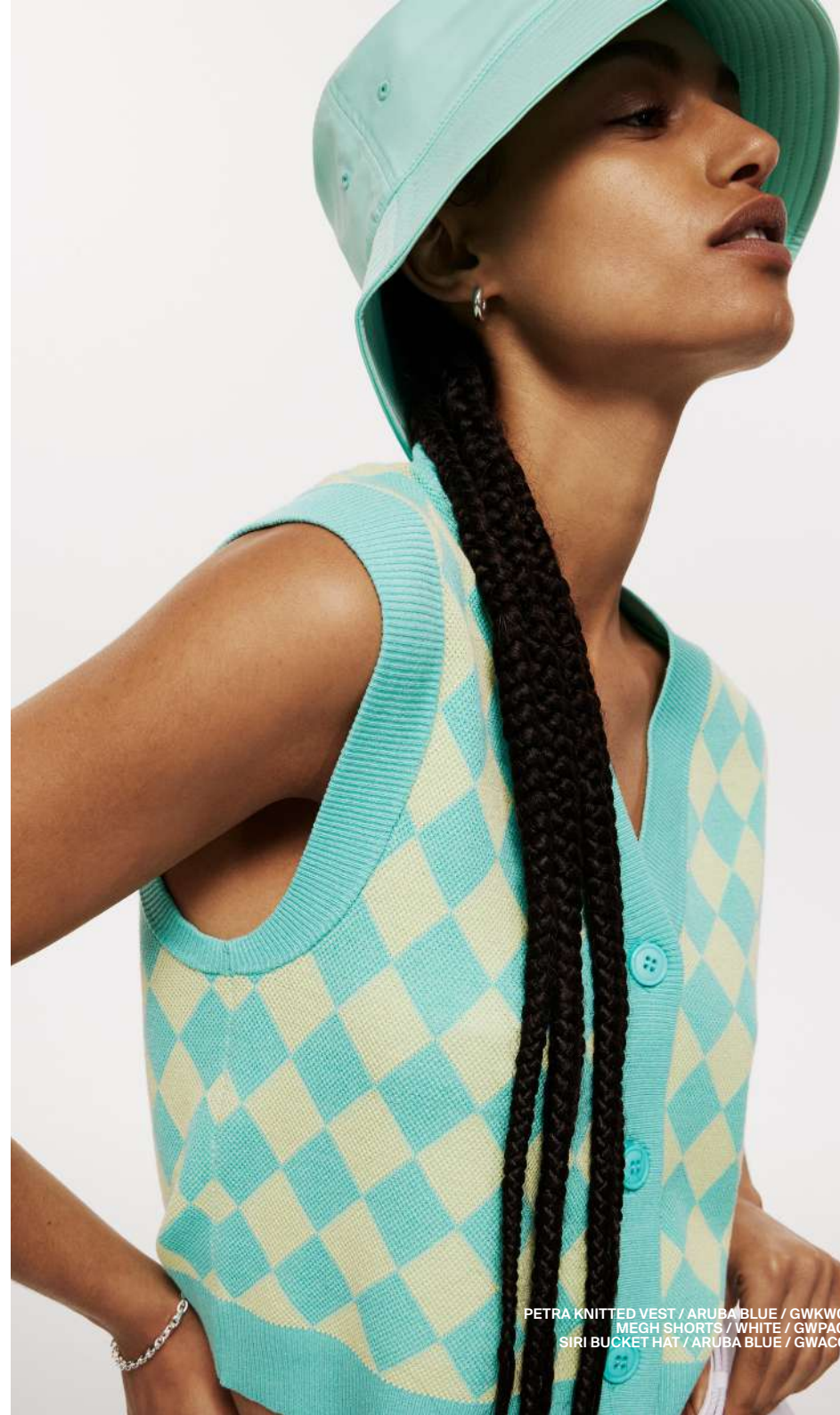


### PETRA KNITTED VEST GWKW09336 VISCOSE/POLYESTER BLEND

Petra vest is jacquard knitted in a checked artwork, making it the perfect layering piece to elevate any look.

- Jacquarded artwork all over
- 3 button placket
- Embroidery logo at back
- Double knit with mesh structure at top
- Soft
- Stretchy

Size: XS-XL  
Material: 72% Viscose/Rayon, 28% Polyester



PETRA KNITTED VEST / ARUBA BLUE / GWKW09336  
MEGH SHORTS / WHITE / GWPA09308  
SIRI BUCKET HAT / ARUBA BLUE / GWAC09760



# KNITWEAR



0341 ESTATE BLUE  
0492 ARUBA BLUE

6855 JL NAVY  
0000 WHITE

0000 WHITE  
G016 TANGERINE TANGO



## ADIA KNITTED SWEATER GWKW09329 VISCOSE/POLYESTER BLEND

Our well performing mock neck sweater in stretchy and soft knit.

- Rib collar
- Fully fashion details
- Knitted in Bridge logo at chest
- Contrast knitted in sleeve and side panels
- Soft and stretchy hand feel
- 16 gg
- Soft
- Stretchy

Size: XS-XL  
Material: 72% Viscose/Rayon, 28% Polyester



## KNITWEAR



Q116 FUCHSIA PURPLE

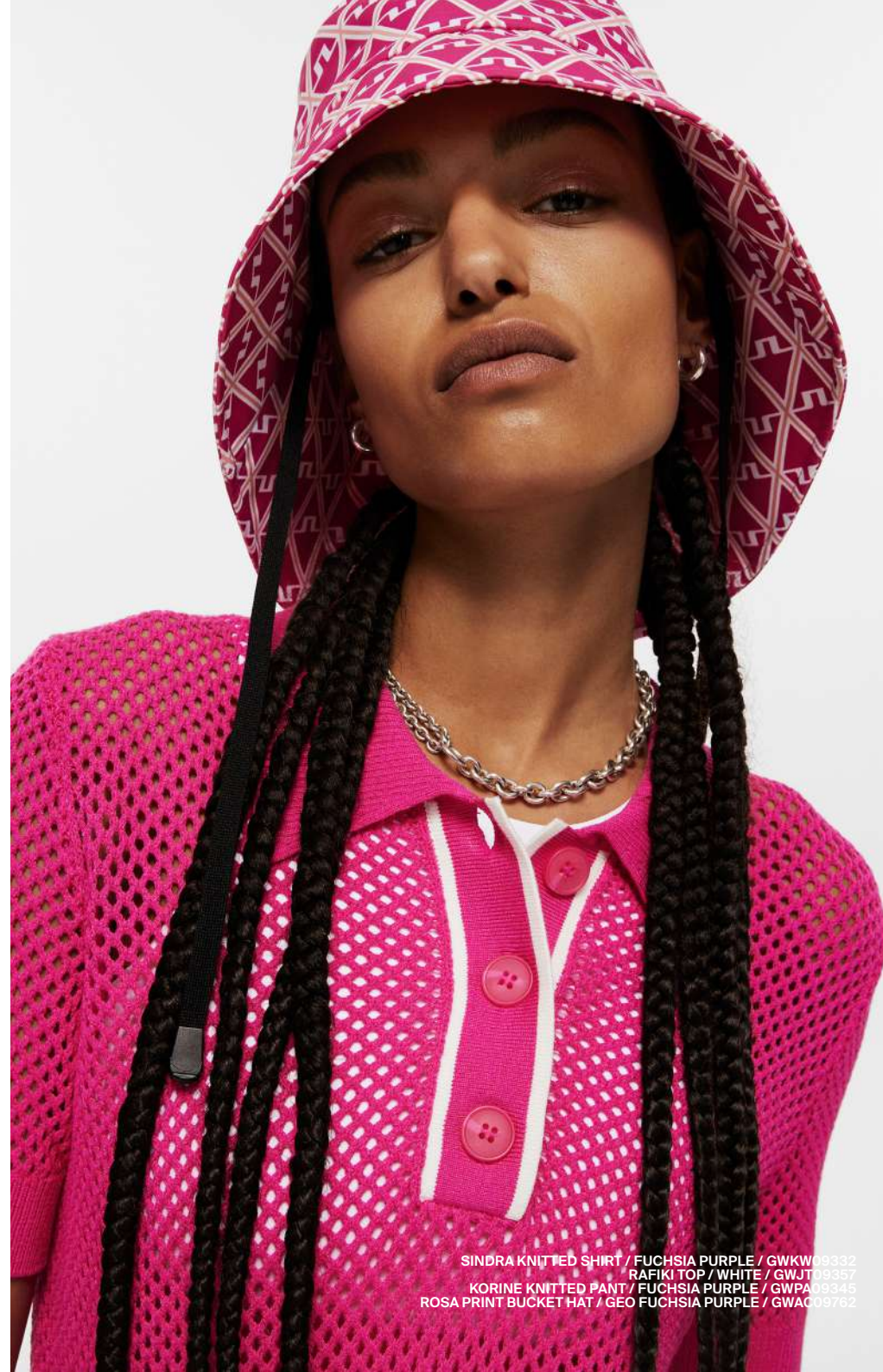


### SINDRA KNITTED SHIRT GWKW09332 VISCOSE/POLYESTER BLEND

Sindra is our new statement shirt in croque mesh knit with ribbed collar, bottom hem and cuffs. In a matching set with Korine knitted pants.

- Croque mesh knit
- Rib collar, bottom hem and cuffs
- 3 button placket
- Soft
- Stretchy

Size: XS-XL  
Material: 72% Viscose/Rayon, 28% Polyester



SINDRA KNITTED SHIRT / FUCHSIA PURPLE / GWKW09332  
RAFIKI TOP / WHITE / GWJT09357  
KORINE KNITTED PANT / FUCHSIA PURPLE / GWPA09345  
ROSA PRINT BUCKET HAT / GEO FUCHSIA PURPLE / GWAC09762

# KNITWEAR



O501 ATOMIZER  
G016 TANGERINE TANGO



Q116 FUCHSIA PURPLE  
S086 BURNT CORAL



6855 JL NAVY  
O000 WHITE

## FLORA KNITTED SWEATER GWKW09330 VISCOSE NYLON

Well performing full zip sweater in rib knitted jacquard.

- Rib knit
- Two way zipper
- Statement logo puller
- Jacquard knitted graphic
- 14gg
- Lightweight

Size: XS-XL  
Material: 65% Viscose/Rayon, 35%  
Polyamide/Nylon  
Ökotex100



FLORA KNITTED SWEATER / ATOMIZER / GWKW09330  
COREY PANTS / BLACK / GWPA10114  
SIRI BUCKET HAT / BLACK / GWAC09760





# KNITWEAR



9999 BLACK  
0501 ATOMIZER

6855 JL NAVY  
0000 WHITE

K056 WAX YELLOW  
0341 ESTATE BLUE

0000 WHITE  
6855 JL NAVY



## MEADOW KNITTED SWEATER GWKW09331 VISCOSE NYLON

New mock neck sweater with perforation mesh knit panels at back for ventilation.

- Perforation mesh knit for ventilation
- Intarsia knitted
- Contrast panels and logo
- 14gg
- Lightweight

Size: XS-XL  
Material: 65% Viscose/Rayon, 35% Polyamide/Nylon Ökotex100



0492 ARUBA BLUE

6855 JL NAVY

0000 WHITE  
6855 JL NAVY

## FELINE KNITTED SHIRT GWKW11504 VISCOSE NYLON STRUCTURE JACQUARD

Well received knit polo with engineered tonal knitted in high and low jacquard.

- High low knitted jacquard
- Contrast stripe on collar and sleeve rib
- 14 gauge double knit

Size: XS-XL  
Material: 50% Viscose/Rayon, 50% Polyamide/Nylon Ökotex100

## KNITWEAR



0000 WHITE  
6855 JL NAVY



### THORINA KNITTED CARDIGAN GWKW09338 UV REACTIVE YARN

New statement cardigan knitted in innovative UV-Responsive yarn in a diamond artwork that changes colour when exposed to UV-Light. Shop-light: White. UV-Light: Burnt coral.

- Contrast rib with jacquard stripe
- 3 button placket
- Embroidery logo at back
- Matching set with Aper knitted skirt
- 16gg double knit
- Lightweight
- UV-Responsive

Size: XS-XL  
Material: 80% Viscose, 20% Nylon  
Ökotex100



THORINA KNITTED CARDIGAN / WHITE / GWKW09338  
APER KNITTED SKIRT / WHITE / GWSD09344  
ASA SOFT COMPRESSION TOP / WHITE / GWJT09003

# OUTERWEAR



9999 BLACK  
O501 ATOMIZER

O341 ESTATE BLUE  
K056 WAX YELLOW

M073 PARADISE GREEN  
Q116 FUCHSIA PURPLE

6855 J.L. NAVY  
O000 WHITE

9999 BLACK  
O501 ATOMIZER

O341 ESTATE BLUE  
K056 WAX YELLOW

Q116 FUCHSIA PURPLE  
M073 PARADISE GREEN

6855 J.L. NAVY  
O000 WHITE



## THORINE JACKET GWOW09517 STRETCH WIND PRO

This new jacket is made in the lightest wind fabric in the collection. This high performance style has super stretch, lightweight and windproof functionality.

- Two-way zipper at center front
- Side pockets with zippers
- Knitted stand up collar
- Elastic logo tape at bottom sleeves and hem
- Raised silicone Bridge print
- Contrast color inserts
- Lightweight
- Water repellent
- Windproof
- Stretch
- PFC-free

Size: XS-XL  
Material: 88% Polyamide/Nylon, 12% Elastane/Spandex 49gr/m2 Ökotex100

## THORINE VEST GWOW09518 STRETCH WIND PRO

This new vest is made in the lightest wind fabric in the collection. This high performance style has super stretch, lightweight and windproof functionality.

- Two-way zipper at center front
- Side pockets with zippers
- Knitted stand up collar
- Elastic logo tape at bottom sleeves and hem
- Raised silicone Bridge print
- Contrast color inserts
- Lightweight
- Water repellent
- Windproof
- Stretch
- PFC-free

Size: XS-XL  
Material: 88% Polyamide/Nylon, 12% Elastane/Spandex 49gr/m2 Ökotex100



## OUTERWEAR



O506 GEO ATOMIZER  
G016 TANGERINE TANGO



9999 BLACK  
E031 ALMOND MILK  
O501 ATOMIZER



6855 JL NAVY  
O000 WHITE



### AMY PONCHO GWOW09524 2L STRETCH

Rainproof, windproof and breathable poncho with waterproof zipper to keep you dry. 4 way stretch fabric. Soft and elastic mesh at back yoke for ventilation.

- Waterproof zippers
- Stretch lining at back yoke for ventilation
- Signature all over print
- Waterproof 20K
- Breathability 20K
- Fully seamsealed
- 4-way stretch
- PFC-free

Size: One Size  
Material: 100% Polyester 125gr/m2  
Bluesign

### TONE JACKET GWOW09521 2L STRETCH

Modern rain jacket in lightweight fully taped fabric will keep you dry in all weather. Waterproof, windproof and breathable 4-way stretch.

- 2-way zip at front
- Elastic at waistband
- Chest and hand pockets with zippers
- Bridge logo on sleeve
- Ventilation opening at back yoke
- Waterproof 20K
- Breathability 20K
- Fully seamsealed
- 4-way stretch
- PFC-free

Size: XS-XL  
Material: 100% Polyester 125gr/m2  
Bluesign

### EVERTINE RAIN JACKET GWOW09710 2L STRETCH

This best selling rain jacket in lightweight fully taped fabric will keep you dry in all weather. Waterproof, windproof and breathable 4-way stretch.

- 2-way zip at front
- Side pockets with zippers.
- Diamond logo puller at front.
- Elastic string at bottom.
- Velcro adjustment at sleeves.
- JL Bridge outline print at collar.
- JL Text outline print at left hand sleeve
- Waterproof 20K
- Breathability 20K
- 4-way stretch
- PFC-free

Size: XS-XL  
Material: 100% Polyester 125gr/m2  
Bluesign

## OUTERWEAR



O495 LEOPARD ARUBA BLUE  
O341 ESTATE BLUE



### EVERTINE RAIN JACKET PRINT GWOW09711 2L STRETCH

This best selling rain jacket in lightweight fully taped fabric will keep you dry in all weather. Waterproof, windproof and breathable 4-way stretch.

- 2-way zip at front
- Side pockets with zippers.
- Diamond logo puller at front.
- Elastic string at bottom.
- Velcro adjustment at sleeves.
- JL Bridge outline print at collar.
- JL text outline print at left hand sleeve.
- Signature all over print.
- Waterproof 20K
- Breathability 20K
- 4-way stretch
- PFC-free

Size: XS-XL  
Material: 100% Polyester 125gr/m2  
Bluesign



EVERTINE RAIN JACKET PRINT / LEOPARD ARUBA BLUE / GWOW09711  
ASA SOFT COMPRESSION TOP / WAX YELLOW / GWJT09003  
FRANCESCA SHORT TIGHTS / ARUBA BLUE / GWJS09467 / VIKTOR VISOR / WAX YELLOW / GMAC09441

## OUTERWEAR



O500 GEO JL NAVY  
M073 PARADISE GREEN



### MINNA ANORAK GWOW09525 STRETCH SHIELD

Stretchy and comfortable cropped golf jacket in signature all over print.

- Half zip
- Hidden chest pocket
- Drawcords at bottom body
- Ventilation opening in back yoke
- Chest Bridge print
- Textprint at back
- Lightweight
- Water repellent
- Windproof
- Stretch

Size: XS-XL  
Material: 96% Polyester, 4% Spandex  
49gr/m2  
Ökotex100



EVERTINE RAIN JACKET PRINT / LEOPARD ARUBA BLUE / GWOW09711  
ASA SOFT COMPRESSION TOP / WAX YELLOW / GWJT09003  
FRANCESCA SHORT TIGHTS / ARUBA BLUE / GWJS09467 VIKTOR VISOR / WAX YELLOW / GMAC09441





## OUTERWEAR



9999 BLACK  
O501 ATOMIZER

0000 WHITE  
Q116 FUCHSIA PURPLE



### CORAL JACKET GWOW10113 SCHOELLER 3L

Rainproof jacket with contrast seam tapings. Keeps you dry in the rain. Panels in stretchy TX-V TILE 3L for extra comfort.

- Aquaguard 2-way zip at front
- Aquaguard zip pockets
- JL text print at left hand sleeve
- Velcro adjustment at sleeves.
- JL Bridge at back neck
- Fully seamsealed
- Waterproof 10K
- Breathability 10K
- Ecorepel Bio
- PFC-free

Size: XS-XL  
Material: 79% Polyamide/Nylon, 21% Polyurethane 147gr/m2



O501 ATOMIZER

G016 TANGERINE TANGO

6855 JL NAVY



### MARTINA QUILT HYBRID HOOD GWOW11402 LX MID

A modern hybrid zipped cardigan style in comfortable double jersey material with a lightweight Recycled Primaloft branded padding at chest and across back shoulders.

- Two way vislon front zipper with logo pullers
- Zipped front pockets
- Elastic logo binding at bottom sleeves
- Silicone Bridge print
- Chin guard for comfortable wearing
- Recycled Primaloft branded padding at chest, across back shoulders and hood
- Water repellent quilt parts
- Soft, stretchy and fast dry

Size: XS-XL  
Material: 80% Polyester, 20% Elastane/ Spandex 310 gr/m2  
Lining: 100% Polyester  
Padding: 100% Recycled Polyester Ökotex100, GRS & Bluesign

# OUTERWEAR



O501 ATOMIZER

6855 JL NAVY

G016 TANGERINE TANGO

0000 WHITE

O501 ATOMIZER

6855 JL NAVY

G016 TANGERINE TANGO



## MARTINA QUILT HYBRID JACKET GWOW11403 LX MID

A modern hybrid zipped cardigan style in comfortable double jersey material with a lightweight Recycled PrimaLoft branded padding at chest and across back shoulders.

- Two way vislon front zipper with logo pullers
- Zipped front pockets
- Elastic logo binding at bottom sleeves
- Silicone Bridge logo
- Chin guard for comfortable wearing
- Recycled PrimaLoft branded padding at chest and across back shoulders
- Water repellent quilt part
- Soft, stretchy and fast dry

Size: XS-XL  
 Material: 80% Polyester, 20% Elastane/ Spandex 310 gr/m2  
 Lining: 100% Polyester  
 Padding: 100% Recycled Polyester  
 Ökotex100, GRS & Bluesign

## MARTINA QUILT HYBRID VEST GWOW11527 LX MID

A modern hybrid zipped vest in comfortable double jersey material with a lightweight Recycled PrimaLoft branded padding at chest and across back shoulders.

- Two way vislon front zipper with logo pullers
- Zipped front pockets
- Elastic logo binding at armholes
- Silicone Bridge logo
- Chin guard for comfortable wearing
- Recycled PrimaLoft branded padding at chest and across back shoulders
- Water repellent quilt part
- Soft, stretchy and fast dry

Size: XS-XL  
 Material: 80% Polyester, 20% Elastane/ Spandex 310 gr/m2  
 Lining: 100% Polyester  
 Padding: 100% Recycled Polyester  
 Ökotex100, GRS & Bluesign

# SHOES



9999 BLACK

0000 WHITE

0346 NAUTICAL BLUE



## FAIRWAY BROGUE GOLF SNEAKER W GWSW11196

A moder take on a classic leather golf shoe. Modern sporty golf outsole and leather upper with perforated details.

- Full grain leather upper
- PU liner / Nylex lining
- Ortholite insole
- EVA midsole & rubber outsole
- Bridge logo on the heel

## RANGE FINDER GOLF SNEAKER W GWSW11195

Lightweight golf sneaker with a sporty spiked golf sole. Mesh upper with the Bridge logo on the sides.

- EVA midsole & semi transparent outsole
- Microfibre & mesh upper with laminated Bridge logo
- Seam seal technology for waterproofing.
- Reflective loop eyelets
- Reflective loop eyelets
- Debossed J.Lindeberg logo on heel.
- Ortholite insole

Size: 36-41  
Material: 100% Polyester



9999 BLACK

0000 WHITE



## RANGE FINDER GOLF SNEAKER W GWSW11197

Lightweight golf sneaker with a sporty spiked golf sole. Mesh upper with the Bridge logo on the sides.

- EVA midsole & semi transparent outsole
- Microfibre & mesh upper with laminated Bridge logo
- Seam seal technology for waterproofing.
- Reflective loop eyelets
- Reflective loop eyelets
- Debossed J.Lindeberg logo on heel.
- Ortholite insole

Size: 36-41  
Material: 100% Polyester





# SHOES



M141 ISLAND GREEN

O346 NAUTICAL BLUE

9999 BLACK

0000 WHITE



## VENT 500 GOLF SNEAKER W GWSW11194

Our own signature golf sneaker with unique custom JL outsole. A lightweight golf sneaker that can be used both on and of the golf course.

- Custom JL golf outsole with bridge logos
- Seam seal technology for waterproofing.
- Transparent hex texture mesh upper
- Laminated Bridge logo on the sides
- Bridge logo spikes under the sole
- Bridge logo on reflective back counter
- Woven label on the tongue
- Laser cut panels on upper
- Mesh panels on upper
- Ortholite insole

## VENT 500 GOLF SNEAKER W GWSW11193

Our own signature golf sneaker with unique custom JL outsole. A lightweight golf sneaker that can be used both on and of the golf course.

- Custom JL golf outsole with bridge logos
- Seam seal technology for waterproofing.
- Transparent hex texture mesh upper
- Laminated Bridge logo on the sides
- Bridge logo spikes under the sole
- Bridge logo on reflective back counter
- Woven label on the tongue
- Laser cut panels on upper
- Mesh panels on upper
- Ortholite insole

Size: 36-41  
Material: 100% Polyester

Size: 36-41  
Material: 100% Polyester



# ACCESSORIES



O492 ARUBA BLUE  
K056 WAX YELLOW



9999 BLACK  
G016 TANGERINE TANGO



Q116 FUCHSIA PURPLE  
0000 WHITE



6855 JL NAVY  
0000 WHITE



0000 WHITE



## LEI SOCK GWAC09775 ACTIVE VENT KNIT

Well performing sock in dry yarn. Jacquarded stripe and Bridge in contrast color.

- Intarisa bridge and stripe in contrast colour
- Mesh knit at top of foot
- Made in Sweden
- Fast dry

Size: 35-40  
Material: 90% Polyamide/Nylon, 10% Elastane/Spandex

## SHORT SOCK GWAC09777 DRY YARN

Well performing short golf sock that has nice jacquard details on side of foot, heel and on foot.

- Short flat knitted socks
- Knitted logo on back heel
- Contrast color jacquard logo on side
- Compression around foot bed
- Made in Sweden

Size: 35-40  
Material: 56% Polyamide/Nylon, 32% Polypropylene, 12% Lycra

# ACCESSORIES



6855 JL NAVY  
M073 PARADISE GREEN

K056 WAX YELLOW  
O341 ESTATE BLUE

0000 WHITE  
6855 JL NAVY



## ALBA BIG VISOR GWAC09768 TECH STRETCH

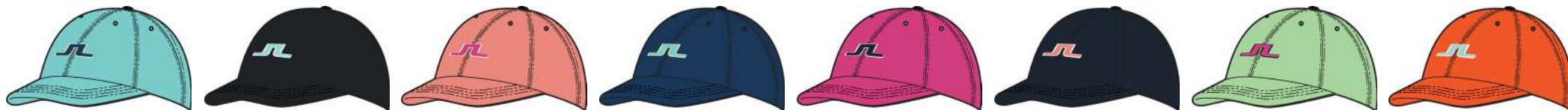
Big visor for extra sun protection, updated in our seasonal prints.

- Absorbing cotton terry sweat band
- Adjuster at back for perfect fit
- J.Lindeberg print at back strap
- Plasticized 3D bridge at front
- Circumference 56cm
- Lightweight
- Water repellent
- Stretch
- Breathable
- Fast dry

Size: One Size  
Material: 97% Polyester, 3% Spandex  
Ökotex100



# ACCESSORIES



O492 ARUBA BLUE  
O341 ESTATE BLUE

9999 BLACK  
O501 ATOMIZER

S086 BURNT CORAL  
Q116 FUCHSIA PURPLE

O341 ESTATE BLUE  
O492 ARUBA BLUE

Q116 FUCHSIA PURPLE  
6855 JL NAVY

6855 JL NAVY  
S086 BURNT CORAL

M073 PARADISE GREEN  
Q116 FUCHSIA PURPLE

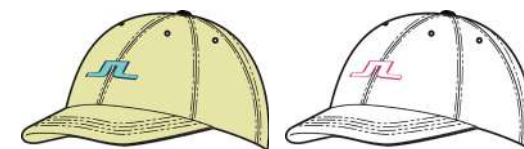
G016 TANGERINE TANGO  
O501 ATOMIZER



## ANGA CAP GWAC09756 TECH STRETCH

Well performing style with our signature Bridge logo at front made in lightweight and fast dry fabric.

- 3D Embroidered Bridge logo at center front
- Ventilation holes
- Absorbing cotton terry sweat band
- Branded metal adjuster at back
- Circumference 56cm
- Fast dry
- Lightweight



K056 WAX YELLOW  
O492 ARUBA BLUE

O000 WHITE  
O000 WHITE

Size: One Size  
Material: 97% Polyester, 3% Spandex  
Lining: 100% cotton  
Ökotex100

## ACCESSORIES



O341 ESTATE BLUE  
O492 ARUBA BLUE

Q116 FUCHSIA PURPLE  
S086 BURNT CORAL

6855 JL NAVY  
M073 PARADISE GREEN

M073 PARADISE GREEN  
Q116 FUCHSIA PURPLE

O000 WHITE  
G016 TANGERINE TANGO

### YADA VISOR GWAC09759 TECH STRETCH

Golf visor that will give you great protection from sun in our best selling quality tech stretch.

- 3D plasticized bridge logo at front
- Absorbing cotton terry sweat band
- Adjuster at back for perfect fit
- J.L.Indeberg text logo at back strap
- Circumference 56cm
- Fast dry
- Lightweight

Size: One Size  
Material: 97% Polyester, 3% Spandex  
Ökotex100





# ACCESSORIES



S193 GEO FUCHSIA PURPLE  
6855 JL NAVY



O500 GEO JL NAVY  
Q116 FUCHSIA PURPLE



O495 LEOPARD ARUBA BLUE  
O341 ESTATE BLUE



O497 NEPTUNE ATOMIZER  
9999 BLACK



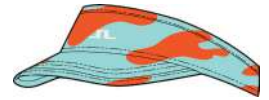
S193 GEO FUCHSIA PURPLE  
6855 JL NAVY



O500 GEO JL NAVY  
Q116 FUCHSIA PURPLE



O495 LEOPARD ARUBA BLUE  
O341 ESTATE BLUE



O497 NEPTUNE ATOMIZER  
0000 WHITE



## ARLENE CAP GWAC10176 MICRO POLY

Our well performing cap now in our light, soft and stretchy fabric with seasonal graphic.

- 3D bridge embroidery at front
- Absorbing cotton terry sweat band
- Ventilation holes
- Branded metal adjuster at back
- All over print
- Circumference 56cm
- Lightweight
- Water repellent
- Breathable
- Stretch
- Fast dry

Size: One Size  
Material: 100% Polyester  
Lining: 100% Cotton  
Ökotex100

## BONNIE PRINT VISOR GWAC09769 MICRO POLY

Our well performing visor now in seasonal prints. Visor will keep you protected from sun and high absorption sweat band will keep you dry.

- 3D plasticized Bridge logo at front
- Absorbing cotton terry sweat band
- Adjuster at back for perfect fit
- J.Lindeberg text logo at back strap
- Circumference 56cm
- All over print
- Lightweight
- Water repellent
- Breathable
- Stretch
- Fast dry

Size: One Size  
Material: 100% Polyester  
Lining: 100% Cotton  
Ökotex100

## ACCESSORIES



0492 ARUBA BLUE  
K056 WAX YELLOW



9999 BLACK  
0501 ATOMIZER



Q116 FUCHSIA PURPLE  
6855 JL NAVY

Q116 FUCHSIA PURPLE  
6855 JL NAVY

0000 WHITE  
6855 JL NAVY



### SIRI BUCKET HAT GWAC09760 TECH STRETCH

Lightweight and fast dry bucket hat with generous brim that will give you extra sun protection.

- 3D rubber Bridge logo at front
- Terry sweatband
- Ventilation holes
- Circumference 58cm
- Fast dry
- Lightweight

Size: One Size  
Material: 97% Polyester, 3% Spandex  
Ökotex100



## ACCESSORIES

EBONY DRESS / WHITE / GWSD09460  
ROSA PRINT BUCKET HAT / NEPTUNE ATOMIZER / GWAC09762PLAY



S193 GEO FUCHSIA PURPLE  
6855 JL NAVY



O500 GEO JL NAVY  
M073 PARADISE GREEN



O495 LEOPARD ARUBA BLUE  
O341 ESTATE BLUE



O497 NEPTUNE ATOMIZER  
G016 TANGERINE TANGO



### ROSA PRINT BUCKET HAT GWAC09762 MICRO POLY

Light weight and fast dry bucket hat with generous brim that will give you extra sun protection and elastic adjuster at back for perfect fit.

- 3D rubber Bridge logo at front
- Terry sweatband
- Ventilation holes
- Circumference 58cm
- Fast dry
- Lightweight

Size: One Size  
Material: 100% Polyester  
Ökotex100



## ACCESSORIES



S193 GEO FUCHSIA PURPLE  
6855 JL NAVY



O495 LEOPARD ARUBA BLUE  
O341 ESTATE BLUE



9999 BLACK  
G016 TANGERINE TANGO



M073 PARADISE GREEN  
6855 JL NAVY



### ASTRID BUCKET HAT GWAC09764 MICRO POLY

Lightweight and fast dry bucket hat with generous brim that will give you extra sun protection and elastic adjuster at back for perfect fit.

- All over print
- Absorbing cotton terry sweat band
- Ventilation holes
- Branded tape tie
- Circumference 58cm
- Fast dry
- Lightweight

Size: One Size  
Material: 100% Polyester  
Ökotex100

### VILMA BIG VISOR GWAC09766 MICRO POLY

Big visor for extra sun protection, updated in our seasonal prints and ribbon back tie.

- Rubber 3D Bridge at front
- Ribbon backs strap in seasonal colours
- Absorbing cotton terry sweat band
- Circumference 56cm
- Lightweight
- Water repellent
- Stretch
- Breathable
- Fast dry

Size: One Size  
Material: 100% Polyester  
Ökotex100

TONE JACKET / BLACK / GWOW09521  
ABUEL SKIRT / BLACK / GWSD09528  
RAFIKI TOP / TANGERINE TANGO / GWJT09357  
VILMA BIG VISOR / BLACK / GWAC09766





# ACCESSORIES



0492 ARUBA BLUE



9999 BLACK



6855 JL NAVY



M073 PARADISE GREEN



G016 TANGERINE TANGO



0000 WHITE



## BETSY BELT GWAC09758 GENUINE LEATHER

Well performing leather belt with iconic Bridge buckle in vegetable tanned leather from Italy.

- 30mm wide belt
- Bridge silver buckle
- Made in Italy
- Vegetable tanned leather
- Stretch

Size: 75-95  
Material: 100% Leather





# ACCESSORIES



O341 ESTATE BLUE  
O492 ARUBA BLUE

Q116 FUCHSIA PURPLE  
M073 PARADISE GREEN

O000 WHITE



## LYKKE BRAIDED BELT GWAC09761 BRAIDED ELASTIC

Braided elastic webbing belt for optimal stretch during movement.

- 30 mm wide belt
- Bridge shaped belt buckle
- Elastic brading
- Leather detail on inside
- Made in Italy
- Stretch

Size: 75-95  
Material: 65% Polypropylene, 35% Rubber



O500 GEO JL NAVY  
M073 PARADISE GREEN

O495 LEOPARD ARUBA BLUE  
O341 ESTATE BLUE

O497 NEPTUNE ATOMIZER  
G016 TANGERINE TANGO



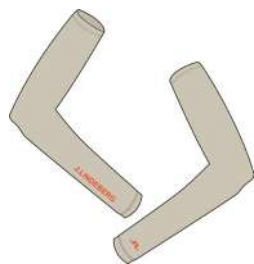
## HANNA BELT BAG GWAC11253 WEBBING BELT

New belt bag, with adjustable elastic webbing belt for optimal stretch during movement.

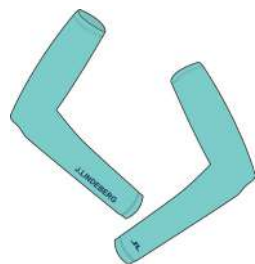
- 30 mm wide belt
- All over seasonal print
- Metal buckle
- Elastic webbing
- Stretch

Size: One Size  
Material: 85% Polyester, 15% Elastane

## ACCESSORIES



E031 ALMOND MILK  
G016 TANGERINE TANGO



O492 ARUBA BLUE  
O341 ESTATE BLUE



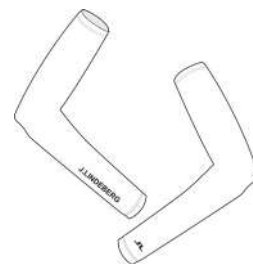
Q116 FUCHSIA PURPLE  
S086 BURNT CORAL



6855 JL NAVY  
0000 WHITE



K056 WAX YELLOW  
O341 ESTATE BLUE



0000 WHITE  
9999 BLACK

### AYLIN SLEEVES GWAC11495 SOFT COMPRESSION

Sleeves with fabric that gives you full coverage and sun protection to your arms along with soft compression to the muscles

- J.Lindeberg logo on right sleeve
- Bridge logo on left sleeve
- Anti slip silicone stripe at sleeve opening
- Moisture transportation
- Soft compression
- Fast dry
- UV 50 protection

Size: XS/S-M/L  
Material: 88% Polyester, 12% Elastane/  
Spandex  
Ökotex100

## ACCESSORIES



S193 GEO FUCHSIA PURPLE  
6855 JL NAVY



O500 GEO JL NAVY  
Q116 FUCHSIA PURPLE



O495 LEOPARD ARUBA BLUE  
O341 ESTATE BLUE



O497 NEPTUNE ATOMIZER  
0000 WHITE



### AYLIN PRINT SLEEVES GWAC09771 SOFT COMPRESSION

Printed sleeves with fabric that gives you full coverage and sun protection to your arms along with soft compression to the muscles.

- J.Lindeberg logo on right sleeve
- Bridge logo on left sleeve
- Anti slip silicone stripe at sleeve opening
- All over print
- Moisture transportation
- Soft compression
- Fast dry
- UV 50 protection

Size: XS/S-M/L  
Material: 88% Polyester, 12% Elastane/  
Spandex  
Ökotex100

## ACCESSORIES



O492 ARUBA BLUE  
K056 WAX YELLOW

9999 BLACK  
O501 ATOMIZER

O341 ESTATE BLUE  
O492 ARUBA BLUE

Q116 FUCHSIA PURPLE  
S086 BURNT CORAL



### SORAYA SLEEVES GWJT09360 NYLON TACTEL SPANDEX JERSEY

Super comfortable bolero with J.Lindeberg logo on left sleeve.

- Comforting layering piece
- J.Lindeberg logo at sleeve
- Cropped fit in a soft compression feel
- Moisture transportation
- Fast dry
- 4 way stretch
- Soft compression fabric
- Cooling effect
- UV+40

Size: XS-XL  
Material: 91% Polyamide/Nylon, 9%  
Elastane/Spandex 150g/m2  
Ökotex100



PETRA KNITTED VEST / FUCHSIA PURPLE / GWKW09336  
GAYLE SKIRT / FUCHSIA PURPLE / GWSD09462  
AYLIN SLEEVES / FUCHSIA PURPLE / GWAC11495



# ACCESSORIES



9999 BLACK  
0000 WHITE



0500 GEO JL NAVY    0495 LEOPARD ARUBA BLUE    M507 CALYPSO OIL GREEN



9999 BLACK

## PLAY STAND BAG GMAC09731 SYNTHETIC LEATHER

Play stand bag is lightweight and easy to carry around due to the double straps. Fold out legs so you can park bag easy.

- Carbon fiber legs
- 6 way top keeper
- Double strap at bag
- J.Lindeberg embroidery branding
- Weight: 5.75 lbs/2.6 kg
- Water resistant material

## PLAY STAND BAG PRINT GMAC09732 SYNTHETIC LEATHER

Play stand bag in seasonal print. Lightweight and easy to carry around due to the double straps. Fold out legs so you can park bag easy.

- Carbon fiber legs
- 6 way top keeper
- Double strap at bag
- J.Lindeberg embroidery branding
- Weight: 5.75 lbs/2.6 kg
- Water resistant material

Size: One Size  
Material: 100% Polyester

Size: One Size  
Material: 100% Polyester

## STAFF BAG GMAC09734 SYNTHETIC LEATHER

Staff bag with comfortable strap for carrying. Embroidery branding on front and side panels. Soft moicro fiber lining

- 8 pockets. 1 microfiber-lined for valuables
- 2 magnetic, 1 detachable belly panel and 2 water bottle pockets
- 6 way top keeper
- Comfortable strap for carrying
- J.Lindeberg embroidery branding
- Soft micro fibre lining
- Size: Top: 10" 6-way reinforced steel ring top
- Weight: 11 lbs/5kg
- Water resistant

Size: One Size  
Material: 100% Polyester





# ACCESSORIES



0500 GEO JL NAVY



9999 BLACK

0500 GEO JL NAVY



9999 BLACK

## STAFF BAG PRINT GMAC09733 SYNTHETIC LEATHER

Printed staff bag, with a comfortable strap for carrying. Embroidery branding on front and side panels. Soft micro fibre lining

- 8 pockets. 1 microfiber-lined for valuables
- 2 magnetic, 1 detachable belly panel and 2 water bottle pockets
- 6 way top keeper
- Comfortable strap for carrying
- J.Lindeberg embroidery branding
- Soft micro fibre lining
- Size: Top: 10" 6-way reinforced steel ring top
- Weight: 11 lbs/5kg
- Water resistant

Size: One Size  
Material: 100% Polyester

## SUNDAY STAND GOLF BAG GMAC10467 SYNTHETIC LEATHER

2-way top with patented rotator stand base. Six pockets with contrast JL branded stripe detail.

- Patented Rotator Stand System for maximum stability
- Magnetic, velour-lined rangefinder pocket
- Cooler-lined water bottle sleeve
- Velour-lined personals pocket
- Large garment compartment
- waterproof zippers
- Detachable ball pocket for personalization
- Padded single strap
- All-weather rain hood
- Towel ring and umbrella holder
- Water resistant material
- 3.95 lbs/1.8 kg

Size: One Size  
Material: 100% Polyester

## SUNDAY PRINTED STAND GOLF BAG GMAC10359 SYNTHETIC LEATHER

2-way top with patented rotator stand base. Six pockets with contrast JL branded stripe detail.

- Patented Rotator Stand System for maximum stability
- Magnetic, velour-lined rangefinder pocket
- Cooler-lined water bottle sleeve
- Velour-lined personals pocket
- Large garment compartment
- waterproof zippers
- Detachable ball pocket for personalization
- Padded single strap
- All-weather rain hood
- Towel ring and umbrella holder
- Water resistant material
- Seasonal print
- 3.95 lbs/1.8 kg

Size: One Size  
Material: 100% Polyester

## PRIME X BACK PACK GMAC10466 SYNTHETIC LEATHER

Built to perform, the PrimeX Backpack is a versatile, utility bag perfect for work, travel, outdoor adventures and everything in between.

- DXR (Diamond X-PAC Ripstop Nylon)
- Antimicrobial Liner
- Premium Waterproof Zippers with Genuine Leather Zipper Pulls
- dedicated tech compartments for your laptop, phone, tablets and more
- Contrasting JL branding stripe
- Approx. 12.25"W x 7.5"D x 19"H
- Water resistant material
- 28.6 Liters

Size: One Size  
Material: 100% Polyester

# ACCESSORIES



9999 BLACK  
0000 WHITE



0500 GEO JL NAVY



9999 BLACK  
0000 WHITE



0500 GEO JL NAVY



## BOSTON BAG GMAC09727 SYNTHETIC LEATHER

Weekend bag with J.Lindeberg and Bridge branding. Under part of bag have a zipper so you can easy open up and put your golf shoes in.

- Bridge logo back and front
- 2 vent compartments
- Water-resistant zipper
- J.Lindeberg embroidery branding
- Capacity: about 49 L

Size: One Size  
Material: 100% Polyester

## BOSTON BAG PRINT GMAC09728 SYNTHETIC LEATHER

Weekend bag with seasonal print. Under part of bag have a zipper so you can easy open up and put your golf shoes in.

- Bridge logo back and front
- 2 vent compartments
- Water-resistant zipper
- J.Lindeberg embroidery branding
- Seasonal print
- Capacity: about 49 L

Size: One Size  
Material: 100% Polyester

## FOOTWEAR BAG GMAC09730 SYNTHETIC LEATHER

Shoe bag with water repellent zippers, ventilation ports and removable strap.

- 1 pocket
- Ventilation ports
- Water-resistant zippers
- Removable strap
- J.Lindeberg embroidery branding
- Size: 8"L x 5"W x 14"H
- Capacity: about 9L

Size: One Size  
Material: 100% Polyester

## FOOTWEAR BAG PRINT GMAC09729 SYNTHETIC LEATHER

Shoe bag in seasonal print, with water repellent zippers, ventilation ports and removable strap.

- 1 pocket
- Ventilation ports
- Water-resistant zippers
- Removable strap
- J.Lindeberg embroidery branding
- Seasonal print
- Size: 8"L x 5"W x 14"H
- Capacity: about 9L

Size: One Size  
Material: 100% Polyester

# ACCESSORIES



9999 BLACK

0500 GEO J.L NAVY

9999 BLACK



## GARMENT DUFFEL BAG GMAC10463 SYNTHETIC LEATHER

Premium synthetic leather durable Garment duffel bag, which is weather resistant, with multi functional compartments. Contrast stripe JL branding.

- Trolley sleeve for easy traveling
- Antimicrobial Lining
- J.Lindeberg embroidery branding
- Premium YKK single-zipper system that allows the bag to open flat
- Internal organization: 3 zip pockets for valuables + 2 elastic pockets for footwear
- External organization: 2 expandable pockets with magnetic closure
- Large main compartment for easy packing and unpacking
- Detachable, padded shoulder strap for multiple carry options
- 23" x 11.5" x 12"H, 52L

Size: One Size  
Material: 100% Polyester

## GARMENT PRINTED DUFFEL BAG GMAC10360 SYNTHETIC LEATHER

Premium synthetic leather durable Garment duffel bag, which is weather resistant, with multi functional compartments. Contrast stripe JL branding.

- Trolley sleeve for easy traveling
- Antimicrobial Lining
- J.Lindeberg embroidery branding
- Premium YKK single-zipper system that allows the bag to open flat
- Internal organization: 3 zip pockets for valuables + 2 elastic pockets for footwear
- External organization: 2 expandable pockets with magnetic closure
- Large main compartment for easy packing and unpacking
- Detachable, padded shoulder strap for multiple carry options
- Seasonal print
- 23" x 11.5" x 12"H, 52L

Size: One Size  
Material: 100% Polyester

## BASELINE RACQUET BAG GMAC10457 SYNTHETIC LEATHER

Weekend bag with J.Lindeberg and Bridge branding. Under part of bag have a zipper so you can easy open up and put your golf shoes in.

- Bridge logo back and front
- 2 vent compartments
- Water-resistant zipper
- J.Lindeberg embroidery branding
- Water resistant material
- Capacity: about 49 L

Size: One Size  
Material: 100% Polyester

# ACCESSORIES



9999 BLACK  
0000 WHITE



O500 GEO JL NAVY

O495 LEOPARD ARUBA BLUE

M507 CALYPSO OIL GREEN



9999 BLACK

## DRIVER CLUB HEADCOVER GMAC09748 SYNTHETIC LEATHER

Cover for golf club with Bridge embroidery on both sides. Matches well to your golf bag.

- Lining in a smooth rugged fabric
- Bridge logo embroidery back and front
- Micro fleece lining
- Water resistant

## DRIVER PRINT CLUB HEADCOVER GMAC09749 SYNTHETIC LEATHER

Cover for golf club with in seasonal print. Matches well to your golf bag.

- Lining in a smooth rugged fabric
- Bridge logo embroidery back and front
- Micro fleece lining
- Seasonal print
- Water resistant

## FAIRWAY HEADCOVER GMAC10462 SYNTHETIC LEATHER

Cover for golf club. Matches well to your golf bag.

- Lining in a smooth rugged fabric
- Bridge logo embroidery back and front
- Micro fleece lining
- Water resistant material

Size: One Size  
Material: 100% Polyester  
Lining: 100% Polyester

Size: One Size  
Material: 100% Polyester  
Lining: 100% Polyester

Size: One Size  
Material: 100% Polyester  
Lining: 100% Polyester



# ACCESSORIES



O500 GEO JL NAVY

O495 LEOPARD ARUBA BLUE

M507 CALYPSO OIL GREEN



9999 BLACK



## FAIRWAY PRINTED HEADCOVER GMAC10357 SYNTHETIC LEATHER

Cover for golf club. Matches well to your golf bag.

- Lining in a smooth rugged fabric
- Bridge logo embroidery back and front
- Micro fleece lining
- Water resistant material

Size: One Size  
Material: 100% Polyester  
Lining: 100% Polyester

## HYBRID HEADCOVER GMAC10464 SYNTHETIC LEATHER

Cover for golf club. Matches well to your golf bag.

- Lining in a smooth rugged fabric
- Bridge logo embroidery back and front
- Micro fleece lining
- Water resistant material

Size: One Size  
Material: 100% Polyester  
Lining: 100% Polyester





# ACCESSORIES



O500 GEO JL NAVY

O495 LEOPARD ARUBA BLUE

M507 CALYPSO OIL GREEN



## HYBRID PRINTED HEADCOVER GMAC10358 SYNTHETIC LEATHER

Cover for golf club. Matches well to your golf bag.

- Lining in a smooth rugged fabric
- Bridge logo embroidery back and front
- Micro fleece lining
- Seasonal print
- Water resistant material

Size: One Size  
Material: 100% Polyester  
Lining: 100% Polyester



9999 BLACK

## BLADE PUTTER COVER GMAC10461 SYNTHETIC LEATHER

The putter blade headcover are designed to fit and protect perfectly for a lifetime of use, in contrast colors with JL branding and Bridge logo detail.

- JL logo and bridge branding
- Soft, velour-lined interior
- Magnetic snap-closure
- Water resistant material

Size: One Size  
Material: 100% Polyester  
Lining: 100% Polyester



9999 BLACK

## MALLET PUTTER COVER GMAC10465 SYNTHETIC LEATHER

Cover for golf club with Bridge embroidery. Matches well to your golf bag.

- Soft, velour-lined interior
- Bridge logo branding
- Magnetic snap-closure
- Water resistant material

Size: One Size  
Material: 100% Polyester  
Lining: 100% Polyester



# ACCESSORIES



9999 BLACK



0000 WHITE



9999 BLACK



0000 WHITE



9999 BLACK



0000 WHITE



O500 GEO JL NAVY

## DIVOT TOOL GMAC09750 METALLIC GREY

Golf divot in brushed silver metal with contrast Bridge logo.

- Brushed silver metal with contrast Bridge logo
- Comes in gift box
- Length 3cm

Size: One Size  
Material: 100% Zinc

## BALL MARKER GMAC09751 METALLIC GREY

Nice and neat metal ball marker with subtle J.Lindeberg 1996 text and contrast color Bridge.

- Shiny silver metal with contrast Bridge logo
- Comes in gift box
- Size: 7cm x 3cm

Size: One Size  
Material: 100% Zinc

## JL TOWEL GMAC09752 STRUCTURED TERRY

Towel in waffle structured micro fiber cloth with good absorption ability and fast dry performance.

- Waffle structured towel
- J.Lindeberg and Bridge embroidery
- Hanger loop
- High moisture absorption
- Microfiber polyester
- Sold in 12 pack
- Comes in gift box
- Size: 105cm x 56cm
- High moisture absorption
- Quick dry

Size: One Size  
Material: 100% Polyester

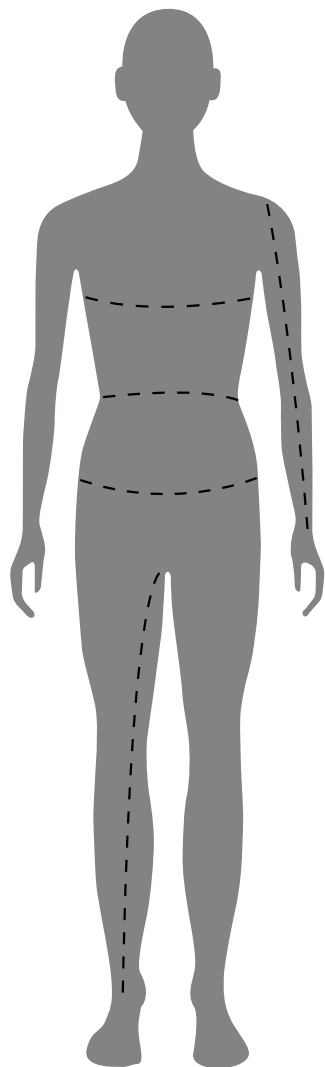
## JL PRINTED TOWEL GMAC09972 STRUCTURED TERRY

Towel in waffle structured micro fiber cloth with good absorption ability and fast dry performance.

- Waffle structured towel
- J.Lindeberg and Bridge embroidery
- Hanger loop
- High moisture absorption
- Microfiber polyester
- Sold in 12 pack
- Comes in gift box
- Size: 105cm x 56cm
- High moisture absorption
- Quick dry

Size: One Size  
Material: 100% Polyester

# MEASUREMENTS



**CHEST** Measure around the chest at the fullest part, placing the tape close up under the arms.

**WAIST** Measure your waist at its narrowest part.

**SEAT** Measure your hip at the widest part.

**ARM** From the tip of your shoulder to the wrist.

**INSIDE LEG** The distance from the top of your inside leg to the floor.

	XS	S	M	L	XL	XXL
LENGTH			168/66D172/67,5			
CHEST	78/30,5	84/33	90/35,5	96/38	102/40	108/42,5
WAIST	62/24,5	68/27	74/29	80/31,5	86/34	92/36
SEAT	87/34,5	93/36,5	99/39	105/41,5	111/43,5	117/46
TIGH	55,5/22	57/22,5	58,5/23	60,5/24	61,5/24	63/25
INNER LEG	77,5/30,5	79/31	80,5/31,5	82/32,5	83,5/33	85/33,5
BICEP	24/9,5	26/10	27,5/11	29,5	31/12	33/13
ARM LENGTH	55,5/22	57/22,5	58,5/23	60/11,5	61,5/24	63/25

**GARMENT MEASUREMENTS** All measurements are in cm and inches and show the total garment width. Size is M and 31".

# CONTACTS

## WHOLESALE FASHION

GLOBAL SALES DIRECTOR / FASHION  
Mads Thisted  
mads.thisted@jlindeberg.com  
+ 46 70 353 89 84

NORDICS / BALTICS  
SALES MANAGER & TEAM LEAD  
Hannes Alpsjö  
hannes.alpsjo@jlindeberg.com  
+ 46 73 087 49 88

SALES EXECUTIVE / NORWAY  
Jonas Olsson  
jonas.olsson@jlindeberg.com  
+ 47 966 83 869

SALES EXECUTIVE / SWEDEN  
Amanda Nordquist  
amanda.nordquist@jlindeberg.com  
+ 46 73 819 17 00

JR SALES EXECUTIVE / SWEDEN  
Sophia Simoncello  
sophia.simoncello@jlindeberg.com  
+ 46 70 256 99 51

CENTRAL EUROPE  
SR SALES MANAGER  
Younes Zelmat  
Younes.Zelmat@jlindeberg.com  
+ 49 170 606 16 20

DENMARK / UK / BENELUX  
EXPORT SALES MANAGER  
Sören Jensen  
soren.jensen@jlindeberg.com  
+ 46 (0) 72 209 32 40

UK  
Sales Executive  
Blair Mckellar  
blair.mckellar@jlindeberg.com  
+44 7376 545045

DIRECTOR OF SALES US  
Karen Castellano  
karen.castellano@jlindeberg.com  
+ 1 (917) 747 77 45

HEAD OF DIGITAL WHOLESALE  
John Boer  
john.boer@jlindeberg.com  
+ 46 76 000 64 43

## WHOLESALE SPORT

GLOBAL SALES DIRECTOR / SPORT  
Florian Gross  
florian.gross@jlindeberg.com  
+ 49 151 516 117 5

NORTH AMERICA PRESIDENT  
Scott Davis  
scott.davis@jlindeberg.com  
+ 1 (561) 818 85 57

MIDEU SALES DIRECTOR / SPORT  
Mario Messerli  
mario.messerli@jlindeberg.com  
+ 41 79 444 8605

BENELUX / COUNTRY MANAGER  
Dennis Meyers  
dennis.meyers@jlindeberg.com  
+ 31 621 82 66 83

AUSTRIA / COUNTRY MANAGER  
Martin Kelmer  
martin.kelmer@jlindeberg.com  
+ 43 664 926 0177

MID EUROPE SALES MANAGER  
GOLF AND TENNIS  
Tim Ellis  
tim.ellis@jlindeberg.com  
+ 49 (0) 160 90807 691

MID EUROPE SALES MANAGER  
SKI & OUTDOOR  
Max Kreipl  
max.kreipl@jlindeberg.com  
+ 49 (0) 160 2419 220

GERMANY / EASTERN EUROPE  
SALES EXECUTIVE  
GOLF AND TENNIS  
Fabio Irrgang  
Fabio.Irrgang@jlindeberg.com  
+49 151 70408190

SWITZERLAND / COUNTRY MANAGER  
Reto Lendenmann  
Reto.lendenmann@jlindeberg.com  
+ 41 79 287 93 25

ITALY  
Philipp Putzer/Summit Sports  
philipp@summitsports.it  
+ 39 335 5631410

UK SALES DIRECTOR / SPORT  
Rob Tankard  
robert.tankard@jlindeberg.com  
+ 44 7817221425

UK SALES MANAGER /  
GOLF AND TENNIS  
Chris Watson  
chris.watson@jlindeberg.com  
+ 44 7540368828

UK SENIOR SALES EXECUTIVE /  
GOLF AND TENNIS  
NORTHERN UK AND IRELAND  
Rob Allison  
+ 44 7754678772  
rob.allison@jlindeberg.com

SOUTH REGION /  
SPORT SALES EXECUTIVE  
Ben Plumridge  
ben.plumridge@jlindeberg.com  
07857937593

UK AGENT / SKI AND OUTDOOR  
Joff Fisher  
Joff.Fisher@jlindeberg.com  
+44 7726 241254

SCANDINAVIA WHOLESALE  
MANAGER / SPORT  
Joakim Ågren  
joakim.agren@jlindeberg.com  
+ 46 76 000 64 10

SOUTH SWEDEN / DENMARK  
& SOUTH SWEDEN  
SENIOR SALES EXECUTIVE  
Marius Pedersen  
marius.pedersen@jlindeberg.com  
+46 (0) 79 347 55 84

NORTH SWEDEN / ICELAND  
SENIOR SALES EXECUTIVE  
Joakim Wallon  
joakim.wallon@jlindeberg.com  
+46 (0) 73 518 34 20

JEIJE AB FINLAND / BALTICS SPORT  
Jari Tanninen  
Jari.tanninen@jeije.fi  
+358 40 022 3288

CHINA  
Winston Lowe  
winston.lowe@jlindeberg.com

## DISTRIBUTORS

EXPORT MANAGER  
Joakim Westtorp  
joakim.westtorp@jlindeberg.com  
+ 46 (0) 73 421 66 60

EXPORT SALES EXECUTIVE  
Isaac Jonsson  
isaac.jonsson@jlindeberg.com  
+46734612190

BENELUX / LEXSON BRAND  
Luke vad Shaik  
luke@lexson.com  
+31765223186

SOUTH KOREA /  
SHINSEGAE INTERNATIONAL  
claire.kim@sikorea.co.kr  
+ 82 10 886 116 04

HONG KONG / YGM TRADING LTD  
maylaw@ygmtrading.com  
+ 85 29 131 83 78

AUSTRALIA / UCHOOSE GOLF  
clint.anderson@uchoosegolf.com  
+ 61 45 105 22 35

SPAIN / PORTUGAL/ FRANCE  
Holiday Golf  
stefan.tjellander@holidaygolf.com  
+ 34 666 561 057

SOUTH AFRICA / TREGGER SPORTS  
shaun@treggersports.co.za  
+ 27 (82) 455 4554

SOUTH EAST ASIA /  
LEONIAN SINGAPORE PTE LTD  
golf@leonian.net  
+ 65 647 609 55

CANADA / TC2 GROUP  
mail@tc2group.ca  
416 703 4566

JAPAN / FDR CORPORATION  
seiichi.sakaeda@fdrsports.co.jp  
+080 4443 0237

UNITED ARAB EMIRATES  
E GOLF INTERNATIONAL LLC  
Dean Cheasley  
dean.cheasley@egolfoutlet.ae  
+ 97 1506 53 9617

SOUTH AMERICA / CARIBBEAN  
BORA SERVICES  
Anaid Fernandez  
afernandez@boraservicesrl.com

## MARKETING & COMMUNICATIONS

HEAD OF MARKETING & PR  
Karin Elwin  
karin.elwin@jlindeberg.com  
+46 735 42 09 55

WHOLESALE SPORTS  
MARKETING MANAGER  
Jonas Janssen  
jonas.janssen@jlindeberg.com

MARKETING MANAGER  
Jaqueline Berg  
jaqueline.berg@jlindeberg.com  
+46 707 50 85 52

PR MANAGER  
Elin Engelbretsson  
elin.engelbretsson@jlindeberg.com  
+46 (0) 70 841 6162

SENIOR MARKETING & PR USA  
Emilia Esser  
emilia.esser@jlindeberg.com  
+1 (929) 364 3679

MARKETING & PR CHINA  
Xiaolei Ma  
xiaolei@jlindeberg.com.cn

