

RÖHNISCH

GOLF SPRING/SUMMER 2024

Swedish Activewear for Women, by Women.

Röhnisch was first founded in 1945 by Hellmut Röhnisch, a German born entrepreneur who emigrated to Sweden in the 1930s. Hellmut won the Swedish gold medal in Gymnastics in 1945, the same year he founded Röhnisch as a supplier in Gymnastics equipment.

Since 2002, Röhnisch has focused on becoming one of the leading Activewear brands for Women, by Women. Our long history of product innovation and refined women's designs is what constantly keeps us in the forefront.

Röhnisch offers Activewear and Golfwear to women of all shapes and sizes, never compromising style for function and with sustainability at heart. As a female brand specialist with an all-female design team, we pride ourselves in making women feel confident, comfortable and strong.

R Ö H N I S C H

Spring/Summer 2024

Our Spring/Summer 2024 Collection is created with the Röhnisch mission at centre; to provide women of all shapes and sizes with sustainable golfwear. In primary focus is the female body and the aim to design products fully adapted to women's specific shapes, qualities and needs.

Inspired by sport heritage, modern blockings and technical fabrics the spring/summer 2024 gives a playful and active look. The collection has 3 colour and print wardrobes for an easy way to mix and build your collection.

In SS 2024 we are again taking big steps towards our sustainability targets to achieve 100% sustainability before or by 2025. 89% of our Golf collection is now made of sustainably sourced and recycled materials.

Color and Print card

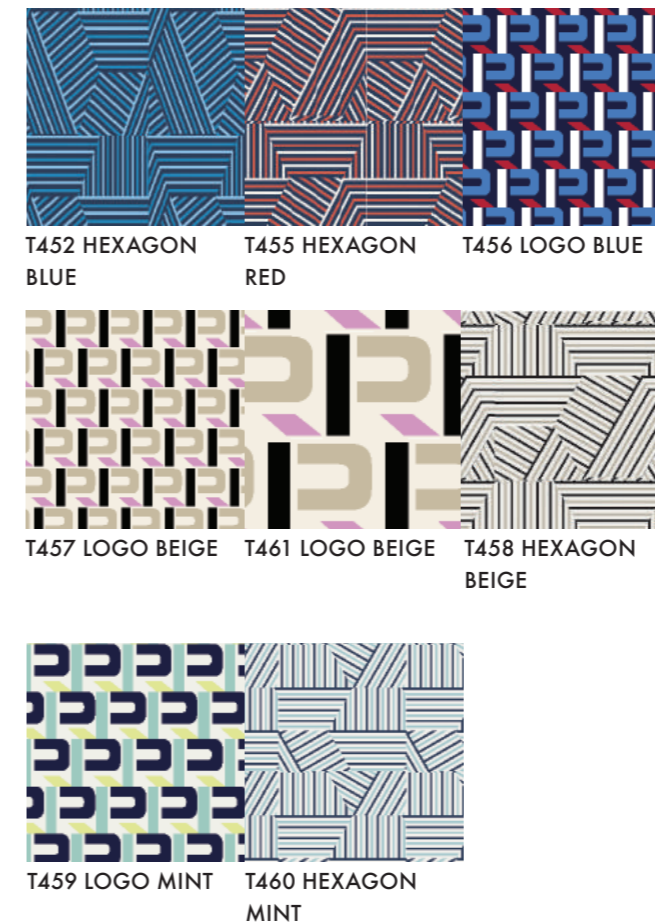


COLOR

A warm palette based on neutrals and nature-inspired shades reflect the sustainable durability in the collection. The classic vibrant red infiltrate the palette, and give the classic navy blue a new lease of life. Warm sunbleached shades and optical white represent the 90's influences.

PRINT CARD

Our print story is at centre this season. The mix of the playfull logo print in different sizes and colors fits well together with the more classic and timeless hexagon print. Go for a classic feminine and monocrome look, a more sporty blocking styling or mix them together.





Wall 1 Sporty Chic

A wardrobe full of re-newed with a preppy twist. Sporty stripes on collars and v-necks are key details that ties the collection together with the bolder logoprint and the classic hexagon. The different structures on both jersey and knits give the collection a feminine and luxurious sporty look. The vibrant red infiltrate the Palette and gives the classic navy a new lease of life.

Wall 2 Modern Classic

This wardrobe includes staple pieces with a more feminine touch. A soft and warm colorcard is applied on technical garments and new styles with fabric mixes and structures. These are pieces that can easily be worn on and off course - still with fit and function at centre.





Wall 3 Active Energy

This wardrobe includes our staples with a poppy and more seasonal color twist. It works well with crispy whites and neutrals and flirts with the 90's bright and happy color feeling. These are pieces that can easily be worn on and off course - still with fit and function at centre.

Accessories

For the Spring/Summer 2024 season we offer an assortment of accessories, each with the purpose to match your training and everyday active life. The Collection consists of practical designs and pieces which are developed to match your outfit and to fit your needs. Focusing on fewer key pieces, Röhnisch aim to make essential accessories which stay with us for many seasons. In addition, 84% of our Accessories collection is now sustainable. This is another key step in our strive to decrease our environmental footprint.



Maternity

We want to encourage an active lifestyle and believe that you shouldn't have to compromise on comfort and function when being pregnant. Therefore we simply decided to launch some of our best-selling golf pieces in sustainable maternity options.

Lookbook⁰¹



Wall 1 Sporty Chic

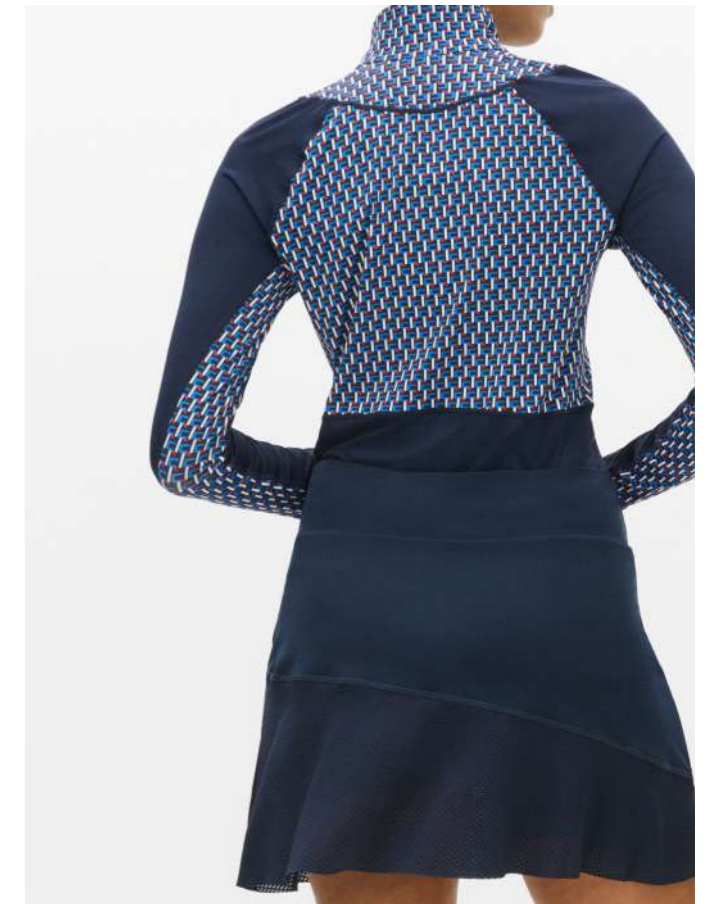
A wardrobe full of re-newed with a preppy twist. Sporty stripes on collars and v-necks are key details that ties the collection together with the bolder logoprint and the classic hexagon. The different structures on both jersey and knits give the collection a feminine and luxurious sporty look. The vibrant red infiltrate the Palette and gives the classic navy a new lease of life.



111968 Bonnie Printed LS
111913 Bonnie Structure Skirt



111968 Bonnie Printed LS
111913 Bonnie Structure Skirt
111334 Logo Socks



111968 Bonnie Printed LS
111913 Bonnie Structure Skirt



111968 Bonnie Printed LS
111913 Bonnie Structure Skirt
111334 Logo Socks



111968 Bonnie Printed LS
111913 Bonnie Structure Skirt
111334 Logo Socks



111785 Seion Soft Cap
111970 Imen Wind Jacket
111508 Amy Skort



111785 Seion Soft Cap
111970 Imen Wind Jacket
111508 Amy Skort



111919 Logo Sweater



111919 Logo Sweater
111913 Bonnie Structure Skort



111785 Seion Soft Cap
111970 Imen Wind Jacket



110680 Logo Sun Visor
 111286 Abby Sleeveless Top
 111966 Mira Pleated Regular Skort
 111746 Functional Knee Socks



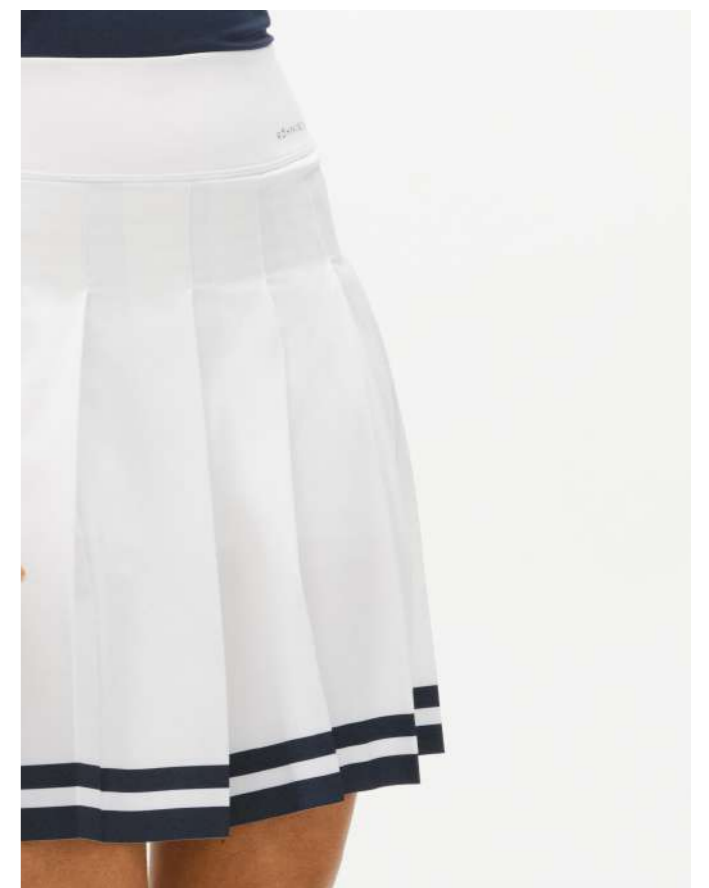
110680 Logo Sun Visor
 111286 Abby Sleeveless Top
 111966 Mira Pleated Regular Skort



111519 Miriam Poloshirt
 111220 Chie comfort Bermuda



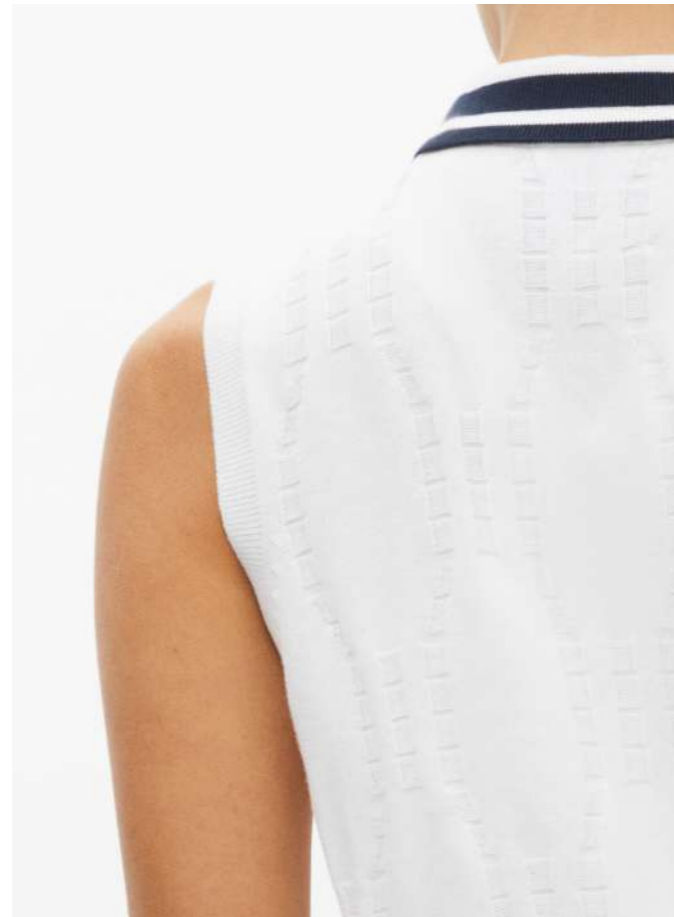
112022 Chie comfort Bermuda



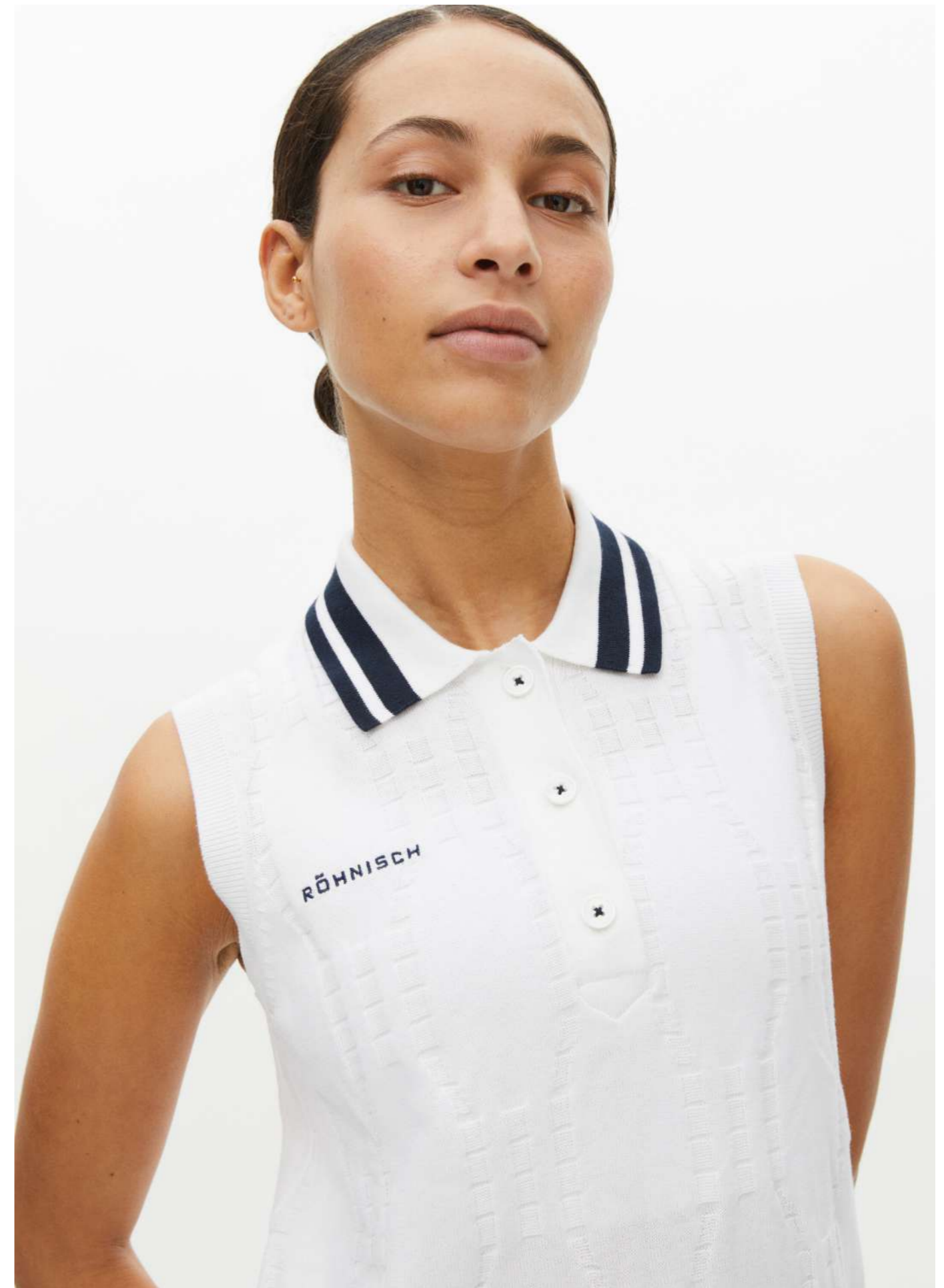
111966 Mira Pleated Regular Skort



111962 Riviera Knit Dress



111962 Riviera Knit Dress



111962 Riviera Knit Dress



111918 Logo Knit



111925 Brenda Bermuda
111288 Abby Sleeveless Dress



111901 Nicky Sleeveless Poloshirt
111903 Nicky Skort



112081 Nicky Full Zip
111903 Nicky Skort



111903 Nicky Skort



111901 Nicky Sleeveless Poloshirt
111903 Nicky Skort



112081 Nicky Full Zip
111903 Nicky Skort



110734 Force jacket



110734 Force jacket
112021 Chie comfort Capri



111519 Miriam Poloshirt
112021 Chie comfort Capri



111668 Adele Knitted Sweater
112018 Chie comfort Pants 30



111668 Adele Knitted Sweater



110734 Force Protection Visor
111288 Abby Sleeveless Dress

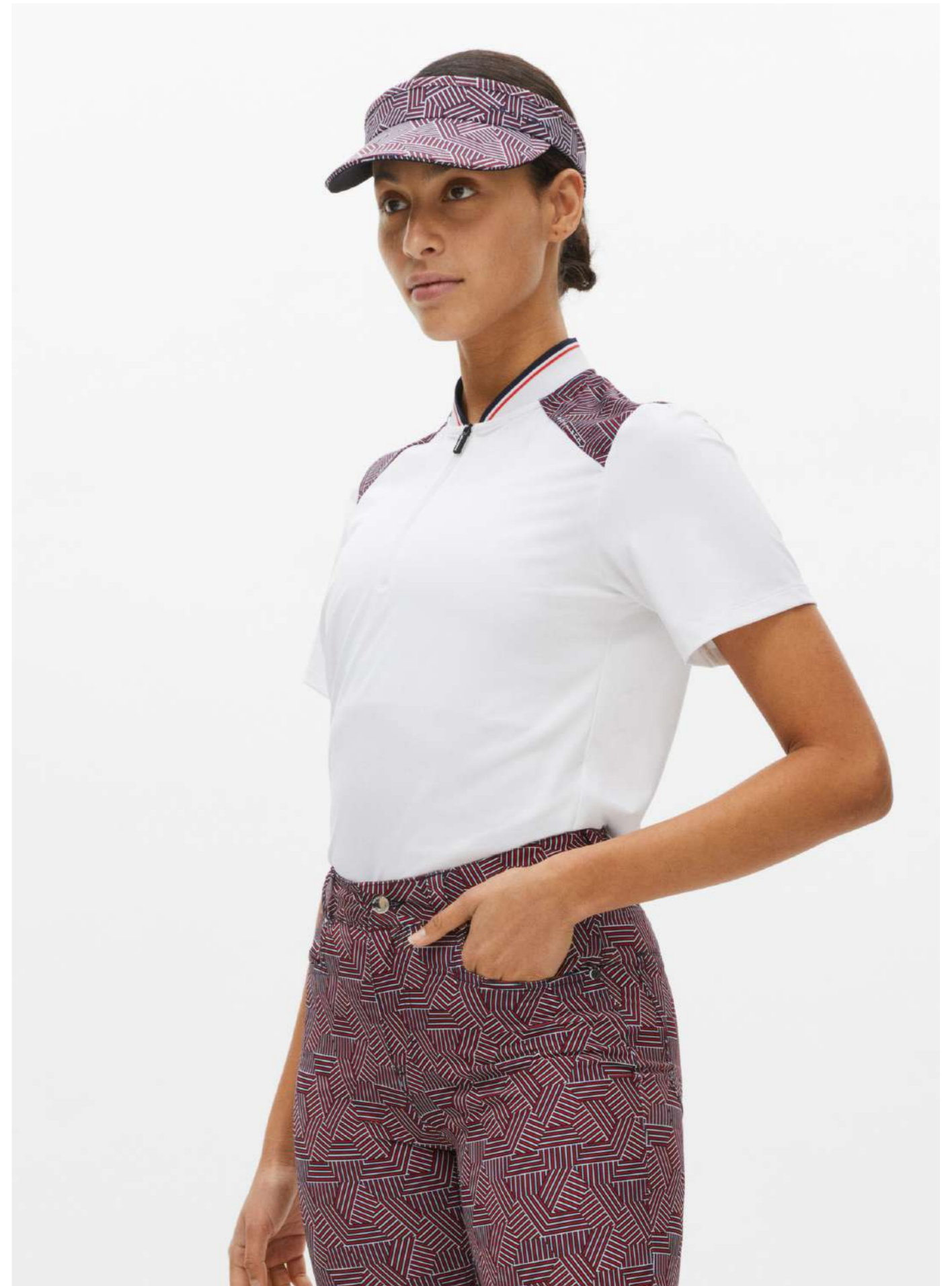


111668 Adele Knitted Sweater
112018 Chie comfort Pants 30

111668 Adele Knitted Sweater
111414 Sun Protection Visor
111288 Abby Sleeveless Dress



111414 Sun Protection Visor
112021 Chie comfort Capri
111929 Arya Poloshirt



111414 Sun Protection Visor
112021 Chie comfort Capri
111929 Arya Poloshirt

Wall 2 Modern Classic

This wardrobe includes staple pieces with a more feminine touch. A soft and warm colorcard is applied on technical garments and new styles with fabric mixes and structures. These are pieces that can easily be worn on and off course - still with fit and function at centre.





111335 Bucket Hat
111901 Nicky Sleeveless Poloshirt



111534 Knitted Half Zip
110571 Embrace Pants 30



111534 Knitted Half Zip



111901 Nicky Sleeveless Poloshirt
111903 Nicky Skort



111335 Bucket Hat
111901 Nicky Sleeveless Poloshirt
111903 Nicky Skort



111770 Addy Printed Long Sleeve
112018 Chie comfort Pants 30



111770 Addy Printed Long Sleeve



111770 Addy Printed Long Sleeve



111522 Deni Sleeveless Poloshirt
111508 Amy Skort



111522 Deni Sleeveless Poloshirt
111508 Amy Skort



110680 Logo Sun Visor
111286 Abby Sleeveless Top



110680 Logo Sun Visor
111286 Abby Sleeveless Top
112020 Chie comfort Skort



110680 Logo Sun Visor
111286 Abby Sleeveless Top
112020 Chie comfort Skort



110680 Logo Sun Visor
111500 Abby Poloshirt
111923 Kay Leggings



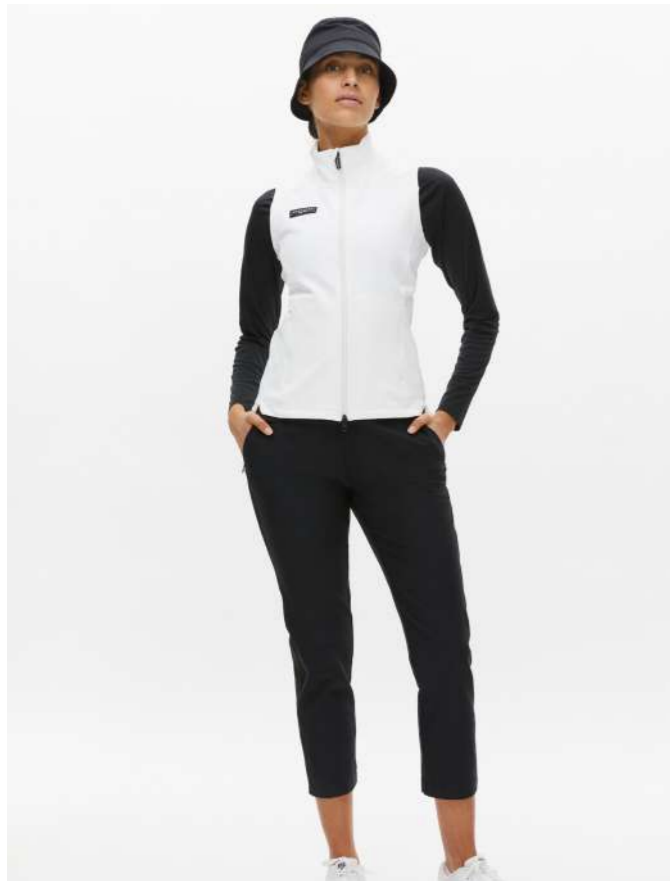
110680 Logo Sun Visor
111500 Abby Poloshirt
111923 Kay Leggings



111912 Mixa Sleeveless Top
111915 Kay Golf Shorts



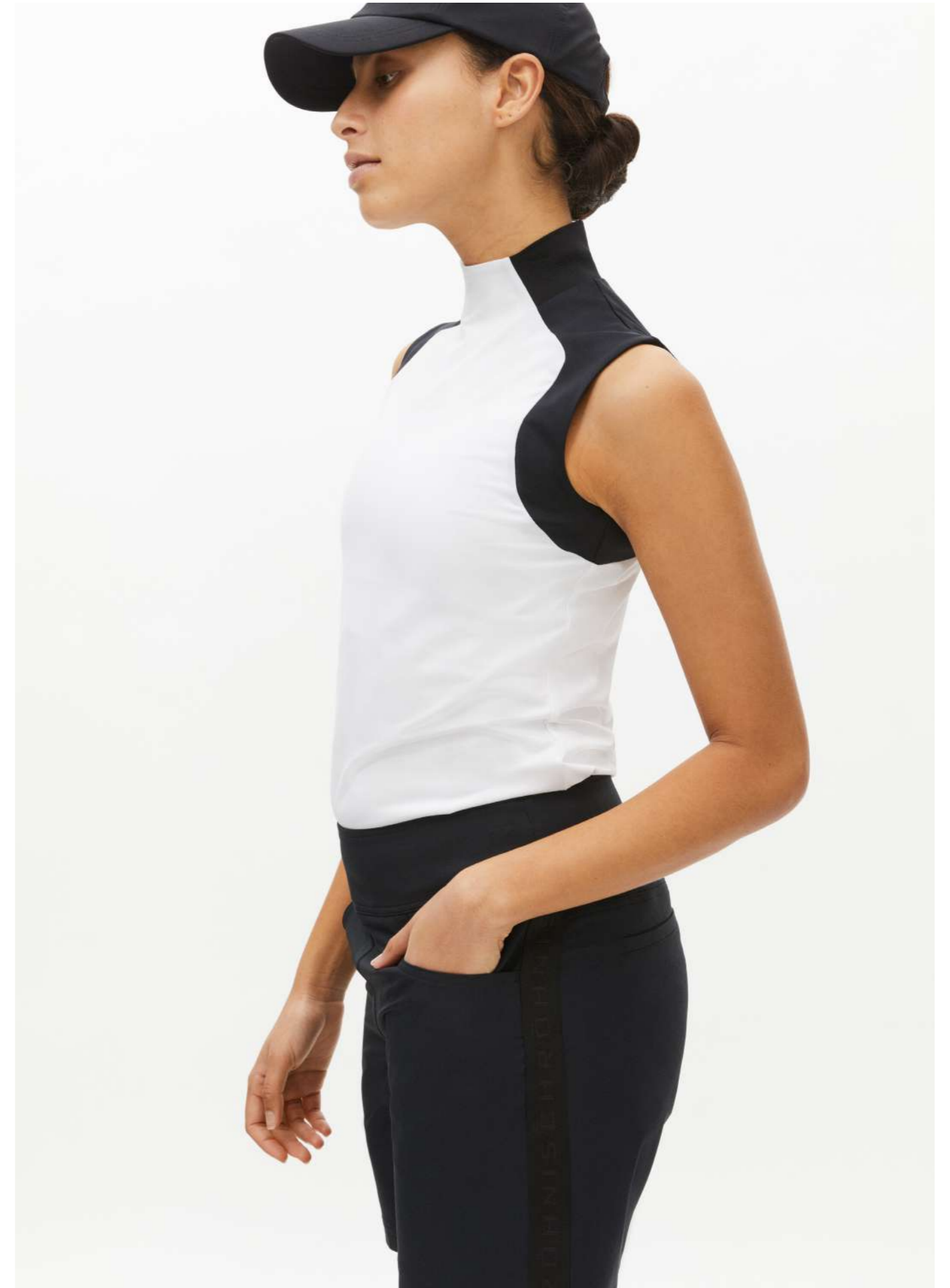
111785 Seion Soft Cap
111912 Mixa Sleeveless Top
111915 Kay Golf Shorts



111335 Bucket Hat
111517 Addy Long Sleeve
111906 Frida Vest
111478 Kay Golf Pants



111478 Kay Golf Pants



111785 Seion Soft Cap
111912 Mixa Sleeveless Top
111915 Kay Golf Shorts



Wall 3 Active Energy

This wardrobe includes our staples with a poppy and more seasonal color twist. It works well with crispy whites and neutrals and flirts with the 90's bright and happy color feeling. These are pieces that can easily be worn on and off course - still with fit and function at centre.



111907 Frida Cardigan
111508 Amy Skort



111907 Frida Cardigan
111508 Amy Skort



111907 Frida Cardigan
111508 Amy Skort
111693 Betsy Poloshirt



111901 Nicky Sleeveless Poloshirt
111508 Amy Skort



111901 Nicky Sleeveless Poloshirt
111508 Amy Skort



110680 Logo Sun Visor
 111910 Bonnie Structure Shortsleeve
 111913 Bonnie Structure Skort



111913 Bonnie Structure Skort



110680 Logo Sun Visor
 111910 Bonnie Structure Shortsleeve
 111913 Bonnie Structure Skort



110680 Logo Sun Visor
 111522 Deni Sleeveless Poloshirt
 112087 Lightstretch Short Skort



112087 Lightstretch Short Skort



Court

Fit and functions are made to improve the performance and the experience on the court. The Collection contains quick-dry jersey and classical 4-way stretch fabrics that enhance both mobility and court specific movements. 100% of the Court collection consists of recycled materials mixed with elastane making it one of the leading in the field.



111864 Court Loose Tee
111855 Alexis Pleat Court Skort



111855 Alexis Pleat Court Skort



111855 Alexis Pleat Court Skort



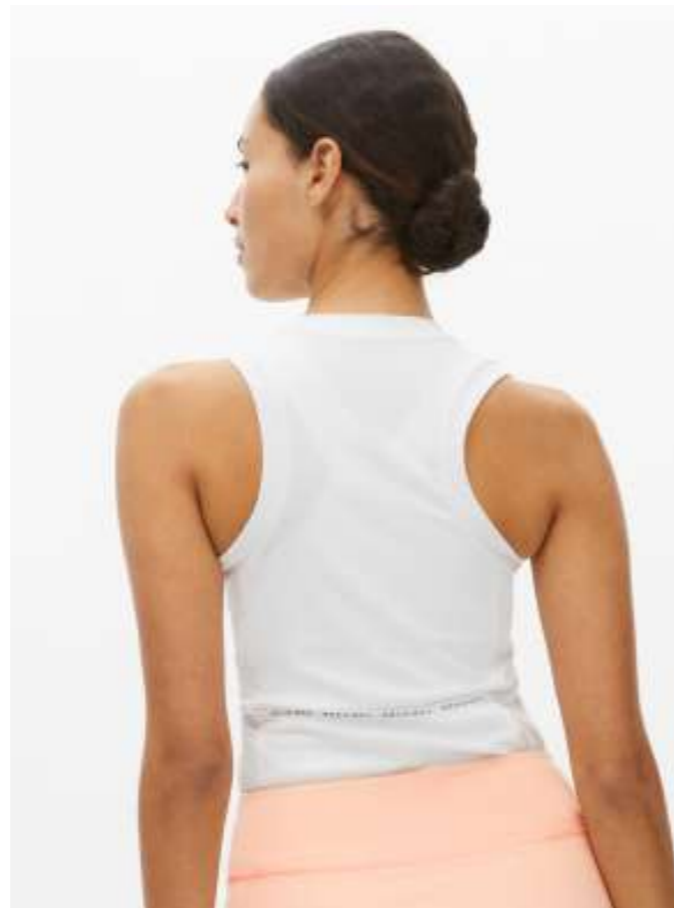
111864 Court Loose Tee



111864 Court Loose Tee



111856 Elmira Pocket Tank Top



111856 Elmira Pocket Tank Top



111856 Elmira Pocket Tank Top
111563 Court Jersey Skort



301058 Kay Sportsbra
111563 Court Jersey Skort



301058 Kay Sportsbra
111563 Court Jersey Skort



111542 Mix Court Dress



111542 Mix Court Dress



111857 Alexis Lightweight Shorts



111856 Elmira Pocket Tank Top
111857 Alexis Lightweight Shorts



111856 Elmira Pocket Tank Top



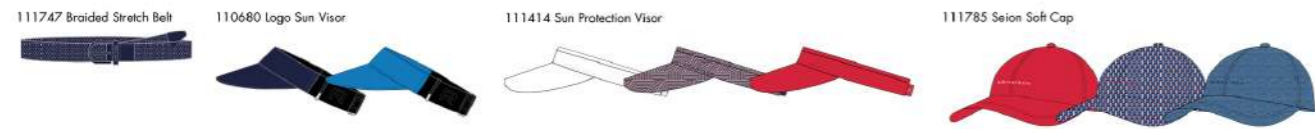
111857 Alexis Lightweight Shorts



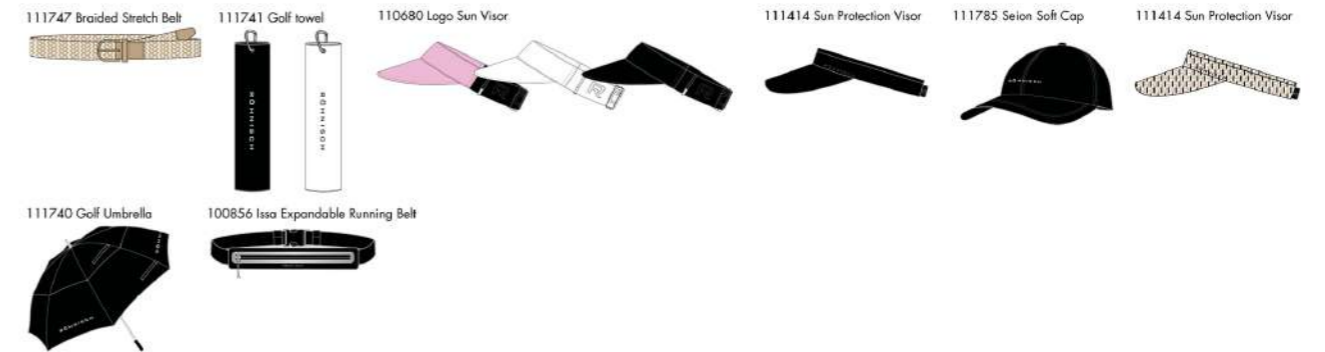
301058 Kay Sportsbra
111857 Alexis Lightweight Shorts

Color Stories⁰²

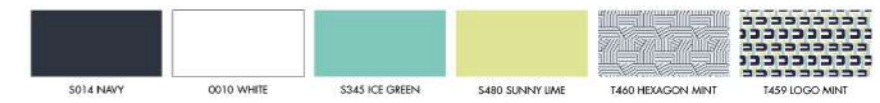
WALL 1



WALL 2



WALL 3



Bottoms⁰³

112018 Chie Comfort Pants 30 32-52



- Sustainable choice
- COMPOSITION
86% Polyester
14% Elastane
- INSEAM
76 cm (Size 40)
- BENEFITS
 - Made in 86% Recycled Polyester
 - Super soft and thin twill fabric
 - 4-way stretch
 - Quick dry and Wrinkle free
 - Regular fit with slim legs

112021 Chie Comfort Capri 32 - 52



- Sustainable choice
- COMPOSITION
86% Polyester
14% Elastane
- INSEAM
52 cm (Size 40)
- BENEFITS
 - Made in 86% Recycled Polyester
 - Super soft and thin twill fabric
 - 4-way stretch
 - Quick dry and Wrinkle free
 - Slit at leg opening
 - Regular fit with slim legs

112018 Chie Comfort Pants 32 32-52



- Sustainable choice
- COMPOSITION
86% Polyester
14% Elastane
- INSEAM
81 cm (Size 40)
- BENEFITS
 - Made in 86% Recycled Polyester
 - Super soft and thin twill fabric
 - 4-way stretch
 - Quick dry and Wrinkle free
 - Regular fit with slim legs

112022 Chie Comfort Bermuda 32 - 52



- Sustainable choice
- COMPOSITION
86% Polyester
14% Elastane
- INSEAM
27,5 cm (Size 40)
- BENEFITS
 - Made in 86% Recycled Polyester
 - Super soft and thin twill fabric
 - 4-way stretch
 - Quick dry and Wrinkle free
 - Slit at leg opening
 - Regular fit with slim legs

112020 Chie Comfort Skort 32 - 52



- Sustainable choice
- COMPOSITION 1
86% Polyester
14% Elastane
- COMPOSITION 2
86% Polyester
14% Elastane
- SKORT LENGHT
50 cm (Size 40)
- BENEFITS
 - Made in 86% Recycled Polyester
 - Super soft and thin twill fabric
 - 4-way stretch
 - Quick dry and Wrinkle free
 - Inner shorts with pocket
 - Regular fit

111925 Brenda Bermuda 32 - 52



- Sustainable choice
- COMPOSITION
88% Polyester
12% Elastane
- INSEAM
24,5 cm (Size 40)
- BENEFITS
 - Made in 88% Recycled Polyester (56% is in Seawool)
 - 4-way stretch
 - Quick dry, Anti static
 - Anti UV, Anti odor
 - Thermal regulation
 - 3 pockets
 - Logo metal plate
 - Press creases at front
 - Relaxed straight fit

111921 Brenda Pant 32 - 52

● Sustainable choice



0010 WHITE 0001 BLACK

COMPOSITION
88% Polyester
12% Elastane

INSEAM
69cm (Size 40)

BENEFITS

- Made in 88% Recycled Polyester (56% is in Seawool)
- 4-Way stretch
- Quick dry, Anti static
- Anti UV, Anti odor
- Thermal regulation
- 3 pockets
- Logo metal plate
- Press creases at front and back
- Relaxed straight fit

110673 Embrace Capri 32-52



0001 BLACK BACK S014 NAVY 0010 WHITE

COMPOSITION 1
76% Viscose
20% Polyamide
4% Elastane

COMPOSITION 2
100% Polyester

INSEAM
52 cm (Size 40)

LENGHT

- Made in 76% Viscose
- Two-way stretch
- Shaping glossy fabric that embrace your curves
- Pull on style
- Slim straight fit with high waist

110571 Embrace Pants 30 32-52



0001 BLACK BACK S014 NAVY 0010 WHITE

COMPOSITION 1
76% Viscose
20% Polyamide
4% Elastane

COMPOSITION 2
100% Polyester

INSEAM
76 cm (Size 40)

BENEFITS

- Made in 76% Viscose
- 2 way stretch
- Firm and glossy fabric that embrace your curves
- Pull on style
- Slim straight fit
- High waist

112085 Embrace Skort 2.0 34 - 52



0001 BLACK 0010 WHITE S014 NAVY

COMPOSITION 1
76% Viscose
20% Polyamide
4% Elastane

COMPOSITION 2
100% Polyester

COMPOSITION 3
93,5% Polyester
6,5% Elastane

SKORT LENGHT
45 cm (Size 40)

BENEFITS

- Made in 76% Viscose
- Two-way stretch
- Shaping glossy fabric that embrace your curves
- Pull on style
- Slim straight fit with high waist
- Inner shorts

110855 Embrace Pants 32 32-52



0001 BLACK BACK S014 NAVY 0010 WHITE

COMPOSITION 1
76% Viscose
20% Polyamide
4% Elastane

COMPOSITION 2
100% Polyester

INSEAM
81 cm (Size 40)

BENEFITS

- Made in 76% Viscose
- 2 way stretch
- Firm and glossy fabric that embrace your curves
- Pull on style
- Slim straight fit
- High waist

112086 Lightstretch Skort 32-52

● Sustainable choice



S480 SUNNY LIME S403 MOJAVE DESERT

COMPOSITION 1
95% Polyamide
5% Elastane

COMPOSITION 2
93,5% Polyester
6,5% Elastane

LENGHT
50 cm (Size 40)

BENEFITS

- 95% Recycled polyamide
- Thin and comfortable two-way stretch
- Quick dry
- Four pockets
- Inner shorts with pocket
- Regular fit and waist

112087 Lightstretch Short Skort 32-52



● Sustainable choice

COMPOSITION 1
95% Polyamide
5% Elastane

COMPOSITION 2
93,5% Polyester
6,5% Elastane

LENGHT
45 cm (Size 40)

- BENEFITS
- 95% Recycled polyamide
 - Thin and comfortable two-way stretch
 - Quick dry
 - Four pockets
 - Inner shorts with pocket
 - Regular fit and waist

111478 Kay Golf Pants 32-52



● Sustainable choice

COMPOSITION
90% Polyester
10% Elastane

INSEAM
65,5 cm (Size 40)

- BENEFITS
- Made in 90% Recycled Polyester
 - 4-way stretch twill fabric
 - Pull on style
 - Logo band at sides
 - Straight fit
 - High waist

112088 Lightstretch Shorts 32-52



● Sustainable choice

COMPOSITION
95% Polyamide
5% Elastane

INSEAM
17 cm (Size 40)

- BENEFITS
- 95% Recycled polyamide
 - Thin and comfortable two-way stretch
 - Quick dry
 - Four pockets
 - Regular fit and waist

111915 Kay Golf Shorts 32-52



● Sustainable choice

COMPOSITION
90% Polyester
10% Elastane

INSEAM
16 cm (Size 40)

- BENEFITS
- Made in 90% Recycled polyester
 - 4-way stretch twill fabric
 - Logo band at sides
 - Pull on style
 - Straight fit
 - High waist

111923 Kay Leggings XXS - XXXL



● Sustainable choice

COMPOSITION
90% Polyester
10% Elastane

INSEAM
74 cm (Size M)

- BENEFITS
- Made in 90% Recycled Polyester
 - 4-way stretch twill fabric
 - Elastic waistband with embossed Röhnish logo at back
 - Zip pocket on right side
 - Pull on style
 - Regular fit with slim legs

111924 Kelly Pant 32-52



COMPOSITION
76% Viscose
20% Polyamide
4% Elastane

INSEAM
73 cm (size 40)

- BENEFITS
- Made in 76% Viscose
 - 2-way stretch
 - Firm and glossy fabric that embrace your curves
 - Pull on style
 - Side zip pockets
 - Regular fit and lenght with straight leg

111965 Mira Pleated Skort XS-XXXL

Sustainable choice



S014 NAVY 0010 WHITE T455 HEXAGON RED

COMPOSITION 1
92% Polyester
8% Elastane

COMPOSITION 2
82% Polyester
18% Elastane

LENGTH
42 cm (Size M)

- BENEFITS
- Pleated lightweight woven fabric in 95% recycled polyester
 - 2-way stretch
 - Inner shorts in 82% recycled polyester
 - Soft tricot fabric in 4-way stretch
 - One sidepocket at innershorts
 - Logo print

111681 Amy Regular Skort XXS-XXXL

Sustainable choice



0001 BLACK S232 FRENCH BLUE T460 HEXAGON MINT T456 LOGO BLUE T457 LOGO BEIGE

COMPOSITION 1
89% Polyester
1% Elastane

COMPOSITION 2
87% Polyester
13% Elastane

LENGTH
48 cm (Size 40)

- BENEFITS
- Made in 89% Recycled Polyester
 - Moisture wicking and breathable fabric
 - Innershorts with pocket
 - Zip pocket at centerback

111966 Mira Pleated Regular Skort XS-XXXL

Sustainable choice



S014 NAVY 0010 WHITE T455 HEXAGON RED

COMPOSITION 1
92% Polyester
8% Elastane

COMPOSITION 2
82% Polyester
18% Elastane

LENGTH
52 cm (Size M)

- BENEFITS
- Pleated lightweight woven fabric in 95% recycled polyester
 - 2-way stretch
 - Inner shorts in 82% recycled polyester
 - Soft tricot fabric in 4-way stretch
 - One sidepocket at innershorts
 - Logo print

111916 Ida Skort XXS-XXXL

Sustainable choice



0010 WHITE S014 NAVY S504 ORCHID PINK

COMPOSITION 1
85% Polyester
15% Elastane

COMPOSITION 2
87% Polyester
13% Elastane

INSEAM
50 cm (Size M)

- BENEFITS
- Made in 85% Recycled Polyester
 - Textured quick dry jacquard fabric
 - Inside pocket at waist
 - Pull on style
 - Innershorts with pocket
 - Regular fit

111508 Amy Skort XXS-XXXL

Sustainable choice



S232 FRENCH BLUE 0001 BLACK T460 HEXAGON MINT T456 LOGO BLUE T457 LOGO BEIGE

COMPOSITION 1
89% Polyester
11% Elastane

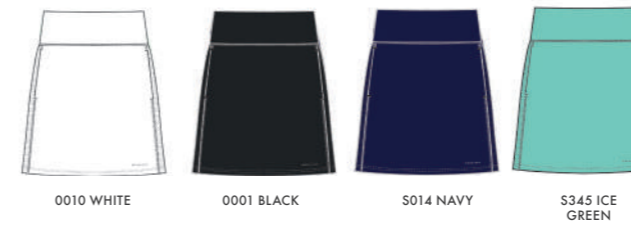
COMPOSITION 2
87% Polyester
13% Elastane

LENGTH
42 cm (Size M)

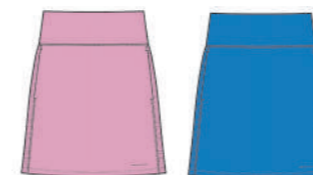
- BENEFITS
- Made in 89% Recycled Polyester
 - Moisture wicking and breathable fabric
 - Innershorts with pocket
 - Zip pocket at centerback

111903 Nicky Skort XXS-XXXL

Sustainable choice



0010 WHITE 0001 BLACK S014 NAVY S345 ICE GREEN



S504 ORCHID PINK S232 FRENCH BLUE

COMPOSITION 1
89% Polyester
11% Elastane

COMPOSITION 2
87% Polyester
13% Elastane

COMPOSITION 3
88% Polyester
12% Spandex

LENGTH
47 cm (Size M)

- BENEFITS
- Made in 89% Recycled Polyester
 - Quick dry and moisture wicking jersey
 - Side panel with structure design and for ventilation
 - Hand pockets
 - Inner shorts
 - Regular fit

111913

Bonnie Structure Skort XXS-XXXL

● Sustainable choice



0010 WHITE

S014 NAVY

COMPOSITION 1
100% Polyester

COMPOSITION 2
89% Polyester
11% Elastane

COMPOSITION 3
87% Polyester
13% Elastane

LENGTH
45 cm (Size M)

BENEFITS

- Made in 100% Recycled Polyester
- Double jersey UPF 50+
- Quick dry and breathable and moisture wicking
- Structure details
- CB pocket inside waistband
- Inner shorts with pocket
- Regular fit

Tops & Knits⁰⁴

111901 Nicky Sleeveless Poloshirt XXS - XXXL



0010 WHITE 0001 BLACK S014 NAVY S345 ICE GREEN S232 FRENCH BLUE S504 ORCHID PINK

● Sustainable choice

COMPOSITION 1
86% polyester
14% elastane

COMPOSITION 2
88% Polyester
12% Spandex

- BENEFITS
- Made in 86% Recycled Polyester
 - Quick dry and moisture wicking
 - Panels with a structure design and for ventilation
 - Regular fit

111902 Nicky Dress XXS - XXXL



0001 BLACK

● Sustainable choice

COMPOSITION 1
89% Polyester
11% Elastane

COMPOSITION 2
87% Polyester
13% Elastane

COMPOSITION 3
88% Polyester
12% Spandex

- BENEFITS
- Made in 88% Recycled Polyester
 - Quick dry and moisture wicking
 - Panels with structure design and for better ventilation
 - Zip pocket zipper
 - Inner shorts with pocket
 - Regular fit

111904 Nicky Poloshirt XXS - XXXL



0010 WHITE 0001 BLACK S014 NAVY S345 ICE GREEN S232 FRENCH BLUE



S504 ORCHID PINK

● Sustainable choice

COMPOSITION 1
86% Polyester
14% Elastane

COMPOSITION 2
88% Polyester
12% Spandex

- BENEFITS
- Made in 86% Recycled Polyester
 - Quick dry and moisture wicking
 - Panels with structure design and for ventilation
 - Regular fit

111519 Miriam Poloshirt XXS - XXXL



0010 WHITE S014 NAVY S264 FLAME SCARLET



S504 ORCHID PINK S480 SUNNY LIME S345 ICE GREEN

● Sustainable choice

COMPOSITION
100% Polyester

- BENEFITS
- Made in 100% Recycled Polyester
 - Soft cotton-feel piquet
 - Quick dry and moisture wicking
 - Four buttons at placket
 - Regular fit

111520 Miriam Sleeveless Poloshirt XXS - XXXL



S014 NAVY BACK S264 FLAME SCARLET S345 ICE GREEN S504 ORCHID PINK



S480 SUNNY LIME 0010 WHITE

● Sustainable choice

COMPOSITION
100% Polyester

- BENEFITS
- Made in 100% Recycled Polyester
 - Soft cotton-feel piquet
 - Quick dry and moisture wicking
 - Placket with four buttons
 - Regular fit

111286 Abby Sleeveless Top XXS - XXXL



T458 HEXAGON BEIGE S014 NAVY T460 HEXAGON MINT 0010 WHITE

● Sustainable choice

COMPOSITION
86% polyester
14% elastane

- BENEFITS
- Made in 86% Recycled Polyester
 - Quick dry and moisture wicking
 - Regular fit

111288 Abby Sleeveless Dress XXS - XXXL



T454 HEXAGON BLUE
T455 HEXAGON RED

Sustainable choice

COMPOSITION 1
89% Polyester
11% Elastane

COMPOSITION 2
87% Polyester
13% Elastane

BENEFITS

- Made in 89% Recycled Polyester
- Quick dry and moisture wicking
- Zip pocket
- Inner shorts with pocket
- Regular fit

111500 Abby Poloshirt XXS - XXXL



0010 WHITE
T458 HEXAGON BEIGE
T460 HEXAGON MINT
S014 NAVY

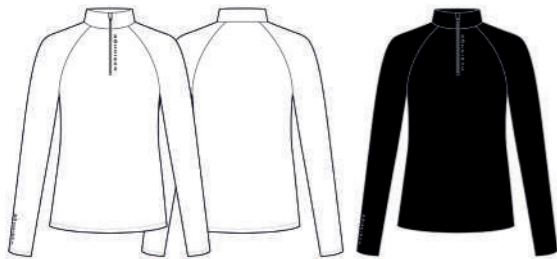
Sustainable choice

COMPOSITION
86% polyester
14% elastane

BENEFITS

- Made in 86% Recycled Polyester
- Quick dry and moisture wicking
- Hidden zip at placket
- Regular fit

111517 Addy Long Sleeve XXS - XXXL



0010 WHITE
BACK
0001 BLACK

Sustainable choice

COMPOSITION
100% Polyester

BENEFITS

- Made in 100% Recycled Polyester
- Double jersey UPF 50+
- Breathable and moisture wicking
- Zipper at collar
- Regular fit

111770 Addy Printed Long Sleeve XXS - XXXL



T461 LOGO BIG BEIGE
BACK

Sustainable choice

COMPOSITION
100% Polyester

BENEFITS

- Made in 100% Recycled Polyester
- Double jersey UPF 50+
- Breathable and moisture wicking
- Zipper at collar
- Regular fit

111518 Addy Short Sleeve XXS - XXXL



0010 WHITE
BACK
0001 BLACK

Sustainable choice

COMPOSITION
100% Polyester

BENEFITS

- Made in 100% Recycled Polyester
- Double jersey UPF 50+
- Breathable and moisture wicking
- Zipper at collar
- Regular fit

111910 Bonnie Structure Shortsleeve XXS - XXXL



0010 WHITE
S014 NAVY
S480 SUNNY LIME

Sustainable choice

COMPOSITION
89% Polyamide
11% Elastane

BENEFITS

- Made in 89% recycled Polyamide
- Breathable and moisture wicking
- Quick dry
- Mesh structured details
- Half zip
- Regular fit

111968 Bonnie Printed Longsleeve XXS - XXXL

Sustainable choice



T460 HEXAGON MINT

T456 LOGO BLUE

COMPOSITION
89% Polyamide
11% Elastane

BENEFITS

- Made in 89% Recycled Polyamide
- Breathable 4-way stretch
- Panels with contrast print
- Half zip
- Regular fit

111522 Deni Sleeveless Poloshirt XXS - XXXL

Sustainable choice



T454 HEXAGON BLUE

T459 LOGO MINT

T457 LOGO BEIGE

COMPOSITION
86% Polyester
14% Elastane

BENEFITS

- Made in 86% Recycled Polyester
- Quick dry and moisture wicking
- Hidden placket with snap buttons
- Röhnisch logo at back
- Regular fit

111969 Bonnie Printed Sleeveless XXS - XXXL

Sustainable choice



T460 HEXAGON MINT

T456 LOGO BLUE

COMPOSITION
89% Polyamide
11% Elastane

BENEFITS

- Made in 89% Recycled Polyamide
- Breathable 4-way stretch
- Panels with contrast print
- Half zip
- Regular fit

111912 Mixa Sleeveless Top XXS-XXXL

Sustainable choice



0010 WHITE

T454 HEXAGON BLUE

COMPOSITION
90% Polyester
10% Spandex

BENEFITS

- Made in 87% Recycled Polyester
- Quick dry and moisture wicking
- Contrast col
- Logo print at bottom hem front and CB at neck
- Ribbed collar at back
- Regular fit

111521 Deni Poloshirt XXS-XXXL

Sustainable choice



T454 HEXAGON BLUE

T459 LOGO MINT

T457 LOGO BEIGE

COMPOSITION
86% Polyester
14% Elastane

BENEFITS

- Made in 86% Recycled Polyester
- Quick dry and moisture wicking
- Hidden placket with snap buttons
- Regular fit

111914 UV Mesh Longsleeve XXS-XXXL

Sustainable choice



S504 ORCHID PINK

T454 HEXAGON BLUE

COMPOSITION 1
100% Polyester

COMPOSITION 2
80% Polyamide
20% Elastane

BENEFITS

- Made in 100% Recycled Polyester
- Double jersey
- UPF 50+
- Quick dry and breathable
- Moisture wicking
- Mesh panels under sleeves
- Regular fit

111929 Arya Poloshirt XXS - XXXL



T457 LOGO BEIGE

T455 HEXAGON RED

● Sustainable choice

COMPOSITION
90% Polyester
10% Spandex

- BENEFITS
- Made in 90% Recycled Polyester
 - Soft cotton-feel piquet
 - Quick dry and moisture wicking
 - Röhnisch logo print at yoke
 - Half zip
 - Regular fit

111669 Adele Knitted Vest XXS-XXXL



S520 NAVY/WHITE

0010 WHITE

● Sustainable choice

COMPOSITION
75% Cotton
22% Polyamide
3% Elastane

- BENEFITS
- Made in 50% Organic cotton
 - Layer up for a preppy look both on course and off course
 - Plain knit
 - Regular fit

111534 Knitted Half Zip XXS - XXXL



0010 WHITE

S264 FLAME SCARLET

S504 ORCHID PINK

● Sustainable choice

COMPOSITION
75% Cotton
22% Polyamide
3% Elastane

- BENEFITS
- Made in 50% Organic Cotton
 - Layer up for a preppy look both on course and off course
 - Half zip
 - Regular fit

111918 Logo Knit XXS - XXXL



0010 WHITE

● Sustainable choice

COMPOSITION
100% Cotton

- BENEFITS
- Made in 100% Organic cotton
 - Biodegradable
 - Detailed structure knit on backside
 - Loose fit

111668 Adele Knitted Sweater XXS-XXXL



S403 MOJAVE DESERT

0010 WHITE

S520 NAVY/WHITE

● Sustainable choice

COMPOSITION
75% Cotton
22% Polyamide
3% Elastane

- BENEFITS
- Made in 50% Organic cotton
 - Layer up for a preppy look both on course and off course
 - Plain knit with decorative stripes
 - Regular fit

111962 Riviera Knit Dress XXS - XXXL



0010 WHITE

● Sustainable choice

COMPOSITION
100% Cotton

- BENEFITS
- Made in 70% Organic cotton
 - Layer up for a preppy look both on course and off course
 - Structure knit
 - Regular fit

111475 Logan Wind Cardigan XXS-XXXL



S014 NAVY

0010 WHITE

● Sustainable choice

COMPOSITION
96% Recycled Polyester
4% Elastane

- BENEFITS
- Made in 96% Recycled Polyester
 - Moisture wicking fabric
 - Breathable wind resistant stretch lining
 - Structure fabric
 - Hand pocket zippers
 - Regular fit

111919 Logo Sweater XXS - XXXL



0010 WHITE

S014 NAVY

● Sustainable choice

COMPOSITION
100% Cotton

- BENEFITS
- Made in 100% In-Conversion Cotton
 - Biodegradable
 - Embroidery logo
 - Made in Europe
 - Soft cotton fleece with brushed inside
 - Loose fit

111531 Josie Jacket XXS - XXXL



S014 NAVY

BACK

0010 WHITE

S504 ORCHID PINK

● Sustainable choice

COMPOSITION
85% Polyester
15% Elastane

- BENEFITS
- Made in 85% Recycled Polyester
 - Textured jacquard fabric
 - Zip pockets at front
 - Regular fit

112081 Nicky Full Zip XXS-XXXL



S504 ORCHID PINK

S232 FRENCH BLUE

0001 BLACK

● Sustainable choice

COMPOSITION
88% Polyester
12% Spandex

- BENEFITS
- Made in 88% Recycled Polyester
 - Jacquard structured fabric
 - Lightweight
 - Breathable and moisture wicking
 - Full zipper front
 - Regular fit

All Weather⁰⁵

111488 Pace Jacket XXS - XXXL



S014 NAVY BACK

● Sustainable choice

- COMPOSITION 1
92% Polyester
8% Elastane
- COMPOSITION 2
100% Polyester
- COMPOSITION 3
100% Polyester
- BENEFITS
- Made in 92% Recycled Polyester
 - Wind resistant panel
 - Thin recycled polyester padding at front
 - Laser cut holes at side for better ventilation
 - Zip pockets at front
 - Two way zipper
 - Regular fit

111489 Pace Vest XXS - XXXL



S014 NAVY BACK

● Sustainable choice

- COMPOSITION 1
92% Polyester
8% Elastane
- COMPOSITION 2
100% Polyester
- COMPOSITION 3
100% Polyester
- BENEFITS
- Made in 92% Recycled Polyester
 - Wind resistant panel
 - Thin recycled polyester padding at front
 - Laser cut holes at side for better ventilation
 - Zip pockets at front
 - Two way zipper
 - Regular fit

110734 Force jacket XXS - XXXL



0001 BLACK BACK S264 FLAME SCARLET

● Sustainable choice

- COMPOSITION 1
93% Polyester
7% Elastane
- COMPOSITION 2
100% Polyamide
- BENEFITS
- Recycled Polyester filling from Sorona
 - Seamless down channels
 - Softshell fabric in side panels
 - Hand pocket zippers
 - Regular fit

110735 Force Vest XXS - XXXL



0001 BLACK S264 FLAME SCARLET

● Sustainable choice

- COMPOSITION 1
93% Polyester
7% Elastane
- COMPOSITION 2
100% Polyamide
- BENEFITS
- Recycled Polyester filling from Sorona
 - Seamless down channels
 - Softshell fabric in side panels
 - Hand pocket zippers
 - Regular fit

110995 Packable Wind Jacket XXS - XXXL



0001 BLACK T455 HEXAGON RED

● Sustainable choice

- COMPOSITION
100% Polyester
- BENEFITS
- Made in 100% Recycled Polyester
 - Wind resistant light fabric
 - Drawstring adjuster at bottom hem
 - Zip pockets at front
 - Packable in one of the pockets
 - Regular fit

110999 Packable Wind Half Sleeve XXS - XXXL



0001 BLACK T455 HEXAGON RED

● Sustainable choice

- COMPOSITION
100% Polyester
- BENEFITS
- Made in 100% Recycled Polyester
 - Wind resistant light fabric
 - Drawstring adjuster at bottom hem
 - Zip pockets at front
 - Packable in one of the pockets
 - Regular fit

111512 Miles Wind Jacket XXS - XXXL

Sustainable choice

COMPOSITION
100% Polyester

- BENEFITS
- 100% Recycled Polyester
 - Lightweight stretch fabric for comfort
 - Anti-UV
 - 5,5 CFM Windproof
 - Mesh lining
 - Hidden side pockets with zipper
 - Regular fit



0001 BLACK S504 ORCHID PINK T457 LOGO BEIGE

111513 Miles Wind Vest XXS - XXXL

Sustainable choice

COMPOSITION
100% Polyester

- BENEFITS
- 100% Recycled Polyester
 - Lightweight stretch fabric for good comfort
 - Anti-UV
 - 5,5 CFM Windproof
 - Mesh lining
 - Hidden side pockets with zipper
 - Regular fit



0001 BLACK S504 ORCHID PINK T457 LOGO BEIGE

111665 Blaze Cardigan XXS - XXXL

Sustainable choice

COMPOSITION
88% Polyester
12% Elastane

- BENEFITS
- Made in 88% Recycled Polyester
 - Stretched single jersey with brushed inside
 - Quick dry
 - Full zip at front
 - Zip pockets
 - Tight fit



S014 NAVY BACK

111906 Frida Vest XXS - XXXL

Sustainable choice

COMPOSITION
77% Polyester
23% Elastane

- BENEFITS
- Made in 77% Recycled Polyester
 - Jersey with brushed inside
 - Wind fabric panels
 - Full zip at front
 - Zip pockets
 - Tight fit



0010 WHITE 0001 BLACK

111907 Frida Cardigan XXS - XXXL

Sustainable choice

COMPOSITION
77% Polyester
23% Elastane

- BENEFITS
- Made in 77% Recycled Polyester
 - Full zip at front
 - Zip pockets
 - Tight fit



0001 BLACK 0010 WHITE

111926 Tech Cardigan XXS - XXXL

Sustainable choice

COMPOSITION 1
77% Polyester
23% Elastane

COMPOSITION 2
90% Polyester
10% Spandex

- BENEFITS
- Made in 90% Recycled Polyester
 - Jersey with brushed inside
 - Mesh fabric panels
 - Full zip at front
 - Zip pockets
 - Tight fit



0001 BLACK

111970 **Imen Wind Jacket** XS - XXXL



T456 LOGO BLUE

Sustainable choice

COMPOSITION 1
100% Polyamide

COMPOSITION 2
100% Polyester

BENEFITS

- Made in 100% Recycled Polyester
- Lightweight ribstop fabric
- Wind and water resistant
- Zipper at front with rubber logo puller
- Invisible zipped front pockets
- Logo print at chest

110598 **Storm Rain Pants 32** XXS - XXXL



0001 BLACK

BACK

COMPOSITION
100% Polyester

INSEAM
81 cm (size 40)

BENEFITS

- Biodegradable membrane
- Soft 2-way stretch fabric
- Windproof
- Breathable 10 000 g/m²/24h
- Waterproof 10 000 mm
- Water resistant zippers
- Taped seams
- Regular fit

110581 **Storm Rain Jacket** XXS - XXXL



0001 BLACK

BACK

S014 NAVY

COMPOSITION
100% Polyester

BENEFITS

- 100% Polyester TPU membrane
- Soft 2-way mechanical stretch fabric
- Windproof
- Breathable 10 000 g/m²/24h
- Waterproof 20 000 mm
- Water resistant zippers
- Durable water repellent
- Taped seams
- Mesh lining
- Regular fit

110597 **Storm Rain Pants 30** XXS - XXXL



0001 BLACK

BACK

COMPOSITION
100% Polyester

INSEAM
76 cm (size 40)

BENEFITS

- Biodegradable membrane
- Soft 2-way stretch fabric
- Windproof
- Breathable 10 000 g/m²/24h
- Waterproof 10 000 mm
- Water resistant zippers
- Taped seams
- Regular fit

Maternity⁰⁶

111266 Dana Maternity Pants XXS - XXXL

● Sustainable choice

COMPOSITION

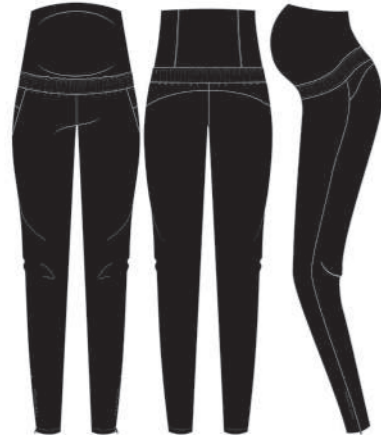
92% Polyester
8% Elastane

INSEAM

81 cm (size M)

BENEFITS

- Made in 92% Recycled Polyester
- Designed for bump to baby
- Soft jersey bump band
- Light wind stopper fabric
- Quick dry two-way stretch
- Zip pockets at front and back
- Zipper at leg opening
- Drawstring at waist
- Regular fit with tapered legs



0001 BLACK BACK SIDE

111529 Miriam Maternity Poloshirt XXS - XXXL

● Sustainable choice

COMPOSITION

100% Polyester

BENEFITS

- Made in 100% Recycled Polyester
- Soft cotton-feel piquet
- Quick dry and moisture wicking
- Hidden placket
- Regular fit



0010 WHITE BACK

111267 Addison maternity top XXS - XXXL

● Sustainable choice

COMPOSITION

100% Polyester

BENEFITS

- Made in 100% Recycled Polyester
- Soft cotton-feel piquet
- Quick dry and moisture wicking
- Regular fit



0001 BLACK BACK

Accessories⁰⁷

110680 Logo Sun Visor ONESIZE

● Sustainable choice



COMPOSITION
92% Polyamide
8% Elastane

BENEFITS

- Made in 92% Recycled Polyester
- Quick dry soft visor
- Logo elastic band at back with metal adjuster

111335 Bucket Hat S/M - L/XL

● Sustainable choice



COMPOSITION
92% Polyester
8% Elastane

BENEFITS

- Made in 92% Recycled polyester
- Made in soft and breathable fabric
- Thin and comfortable two-way stretch
- Quick dry

111414 Sun Protection Visor ONESIZE

● Sustainable choice



COMPOSITION
92% Polyamide
8% Elastane

BENEFITS

- Made in 92% Recycled Polyester
- Quick dry soft visor
- Elastic band at back

111848 Siri Bucket Hat ONESIZE



COMPOSITION
100% Cotton

BENEFITS

- Made in 100% Cotton
- Cotton Twill
- Naturally biodegradable
- Made in soft and breathable fabric
- Adjustable straps
- Protects you from the sun

111785 Seion Soft Cap ONESIZE

● Sustainable choice



COMPOSITION 1
92% Polyester
8% Elastane

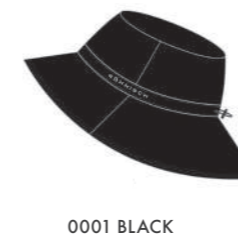
COMPOSITION 2
95% Polyester
5% Elastane

COMPOSITION 3
93% Polyester
7% Elastane

BENEFITS

- Made in 92% Recycled Polyester
- Thin and comfortable two-way stretch
- Quick dry
- Adjustable strap at back

111749 Rainy Hat S/M - L/XL



COMPOSITION
100% Polyester

BENEFITS

- Recycled material
- Breathable 10 000 g/m²/24h
- Waterproof 10 000 mm
- Reflex print
- Adjustable drawstring

111415 Straw Sun Visor ONESIZE



S392 HEMP

COMPOSITION
100% Paper

- BENEFITS
- Straw Sun Visor made from paper
 - Recyclable and naturally biodegradable materials
 - Fit to protect you from the sun
 - Logo tab

111850 Sisi Straw Hat ONESIZE



S403 MOJAVE DESERT

COMPOSITION
100% Paper

- BENEFITS
- Straw hat made from paper
 - Recyclable
 - Naturally biodegradable
 - Fit to protect you from the sun
 - Embroidered logo on band

111747 Braided Stretch Belt ONESIZE



S014 NAVY



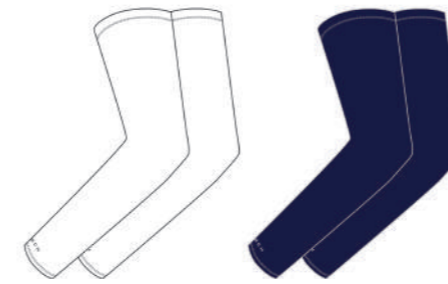
S444 BEIGE SAND

● Sustainable choice

COMPOSITION
50% Polyester
30% Rubber
20% Cotton

- BENEFITS
- Recycled Polyester
 - Elastic braided belt

111134 Protective UV Sleeves S/M - M/L



0010 WHITE

S014 NAVY

● Sustainable choice

COMPOSITION
100% Polyester

- BENEFITS
- UPF 50+
 - 100% Recycled Polyester
 - Recyclable
 - Soft double jersey
 - Silicon tape to keep sleeve in place

111131 2-pack Functional Pompom Socks 36-38 - 39-41



S014 NAVY

0010 WHITE

S403 MOJAVE DESERT



S504 ORCHID PINK



S345 ICE GREEN

● Sustainable choice

COMPOSITION
98% Polyamide
2% Elastane

- BENEFITS
- 70% Recycled polyamide yarn
 - Breathable and moisture wicking yarn
 - Light weight
 - Reinforced heel and toe
 - Arch support
 - 2-pack
 - Pompom detail

111132 2-pack Functional Sport Socks 36-38 - 39-41



0001 BLACK

0010 WHITE

● Sustainable choice

COMPOSITION
98% Polyamide
2% Elastane

- BENEFITS
- Made in 70% recycled polyamide
 - Breathable and moisture wicking yarn
 - Light weight
 - Reinforced heel and toe
 - Arch support
 - 2-pack

111334 2-pack Logo Socks 36-38 - 39-41



● Sustainable choice

COMPOSITION
98% Polyamide
2% Elastane

- BENEFITS
- Breathable and moisture wicking yarn
 - Reinforced heel and toe
 - Arch support
 - 2-pack

111741 Golf towel ONESIZE



● Sustainable choice

COMPOSITION
85% Polyester
15% Polyamide

- BENEFITS
- Recycled polyester
 - Quick dry waffle knit material
 - Metal hook

111746 Functional Knee Socks 36-38 - 39-41

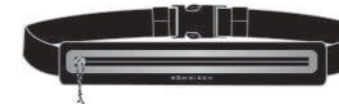


● Sustainable choice

COMPOSITION
98% Polyamide
2% Elastane

- BENEFITS
- Breathable and moisture wicking yarn
 - Reinforced heel and toe
 - Arch support
 - 2-pack

100856 Issa Expandable Running Belt 36-38 - 39-41



● Sustainable choice

COMPOSITION
75% Polyester
25% Elastane

- BENEFITS
- Recycled material
 - Adjustable waist band
 - Pocket with water repellent zipper
 - Reflective print around pocket
 - Water resistant

111740 Golf Umbrella ONESIZE



● Sustainable choice

COMPOSITION
100% Polyester

- BENEFITS
- Recycled polyester material
 - Waterproof
 - Double canopy with wind tunnels
 - Fibre glass shaft and ribs
 - Rubber handle

110513 Metal Water Bottle



COMPOSITION
100% Metal

- BENEFITS
- Metal bottle for both warm and cold drinks

Court⁰⁸

111855 Alexis Pleat Court Skort XS - XXL



COMPOSITION 1
92% Polyester
8% Elastane

COMPOSITION 2
82% Polyester
18% Elastane

● Sustainable choice

BACK LENGTH
40 cm (size M)

BENEFITS

- Made in 92% Recycled Polyester
- Pleated lightweight woven fabric
- 2-way stretch
- Inner shorts in 82% Recycled Polyester
- Soft tricot fabric in 4-way stretch
- Elastic drawstring at waistband
- One sidepocket at innershorts
- Logo print

111856 Elmira Pocket Tank Top XS - XXL



0010 WHITE BACK 0001 BLACK S511 PRAIRIE SUNSET

● Sustainable choice

COMPOSITION
78% Polyester
22% Elastane

BENEFITS

- Made in 87% Recycled Polyester
- Moisture wicking and breathable
- Elastic bindings
- Pocket at back

111857 Alexis Lightweight Shorts XS - XXL



0001 BLACK BACK

● Sustainable choice

COMPOSITION 1
92% Polyester
8% Elastane

COMPOSITION 2
82% Polyester
18% Elastane

INSEAM
12 cm (Size M)

BENEFITS

- Made in 92% recycled polyester
- Innershorts made in 82% Recycled polyester
- Logo print at side

111864 Court Loose Tee XS - XXL



0001 BLACK BACK S511 PRAIRIE SUNSET

● Sustainable choice

COMPOSITION
100% Polyester

BENEFITS

- Made in 100% Recycled Polyester
- Moisture wicking and breathable
- UPF 50+
- Loose fit

111542 Mix Court Dress XS - XXL



0001 BLACK BACK

● Sustainable choice

COMPOSITION
88% Polyester
12% Elastane

BENEFITS

- Made in 100% Recycled Polyester
- Moisture wicking and breathable
- Inner shorts
- Mesh fabric on back

111563 Court Jersey Skort XS - XXL



0001 BLACK BACK 0010 WHITE S511 PRAIRIE SUNSET

● Sustainable choice

COMPOSITION
89% Polyester
11% Elastane

LENGTH:

39 cm (Size M)

BENEFITS

- Made in 89% Recycled Polyester
- Moisture wicking breathable jersey fabric
- Inner shorts with pocket
- Regular fit

111600 Court Bike Tights XS - XXL



0001 BLACK BACK SIDE

● Sustainable choice

COMPOSITION
77% Polyester
23% Elastane

INSEAM
21 cm (Size M)

- BENEFITS
- Made in 87% recycled polyamide
 - Soft and comfortable
 - Breathable and moisture wicking fabric
 - External ball pocket at back of waist
 - Adjustable drawstring at waist
 - Röhnisch logo at front
 - High waist

111601 Court High Waist Tights XS - XXL



0001 BLACK BACK SIDE

● Sustainable choice

COMPOSITION
77% Polyester
23% Elastane

INSEAM:
64,5 cm (Size M)

- BENEFITS
- Made in 87% recycled polyamide
 - Soft and comfortable
 - Breathable and moisture wicking fabric
 - External ball pocket at back of waist
 - Adjustable drawstring at waist
 - Röhnisch logo at front
 - High waist

111550 Zip Up Court Jacket XS - XXL



0001 BLACK BACK

● Sustainable choice

COMPOSITION
90% Polyester
10% Elastane

- BENEFITS
- Made in 90% recycled polyester
 - Soft, stretchy and breathable fabric
 - Detail mesh fabric on front and back
 - Front zip with logo puller

Marketing⁰⁹

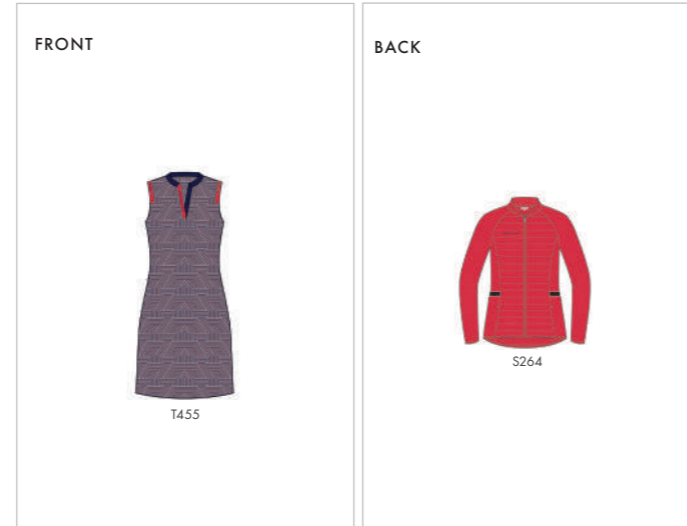
POS

930341 Golf Display 1 A4



Double sides table and shelf display
Price

930342 Golf Display 2 A4



Double sides table and shelf display
Price

930345 Golf Display 5 A4



Double sides table and shelf display
Price

930346 Golf Display 6 A4



Double sides table and shelf display
Price

930343 Golf Display 3 A4



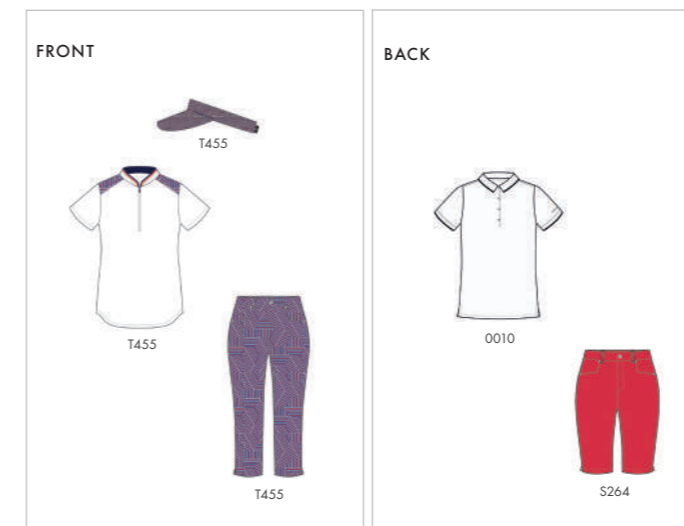
Double sides table and shelf display
Price

930344 Golf Display 4 A4



Double sides table and shelf display
Price

930347 Golf Chie Display 1 A4



Double sides table and shelf display
Price

930348 Golf Chie Display 2 A4



Double sides table and shelf display
Price

POS

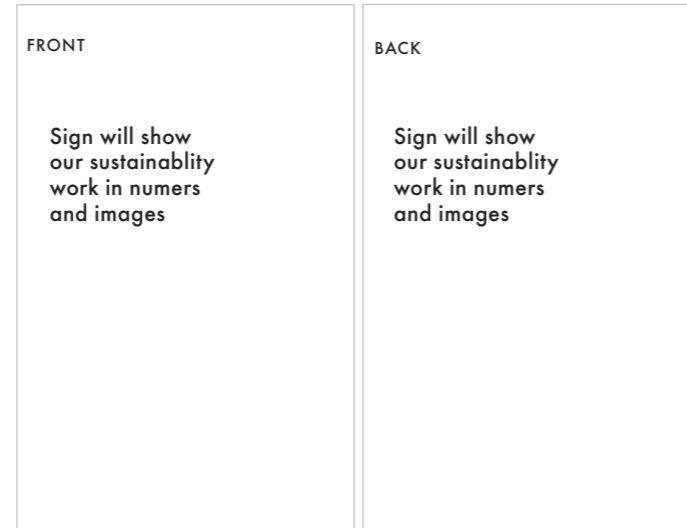
930349 Court Display A4



Double sides table and shelf display

Price _____

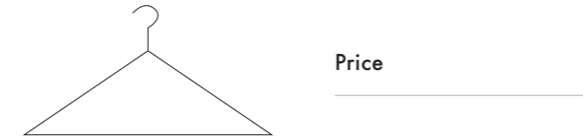
930350 Golf Sustainability Display A4



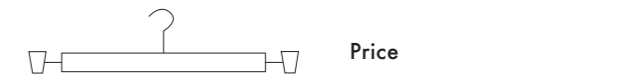
Double sides table and shelf display

Price _____

930255 Clothing Hangers Top



930256 Clothing Hangers Bottom



930248 Slatwall Logo Sign 60 X 40 CM



Logosign in GLS for slatwall use

Price _____

930249 Table Sign 24 X 14 CM



Table sign in GLS for shelves and tables

Price _____

Sustainability¹⁰

2025 Goal & Vision: All our fabrics will be 100% sustainable.

Sustainable fabrics SS24: 91%

Golf		Active		Swimwear		Court		Trekking	
Tops	97%	Tops	100%	Swimwear	100%	Court	100%	Trekking	87%
Bottoms	75%	Jacket/Vest	100%						
		Bottoms	100%						
		Underwear	100%						
Total		Total		Total		Total		Total	
89%		100%		100%		100%		87%	
Accessories									
Golf	84%								
Active	66%								
Total									
75%									

Sustainability

Active
71 out of 71 products
are a sustainable choice

Golf
69 out of 77 products
are a sustainable choice

Swimwear
11 out of 11 products are
a sustainable choice

Court
9 out of 9 products are a
sustainable choice

Trekking
21 out of 24 products
are a sustainable choice

Accessories
21 out of 28 products
are a sustainable choice

As far as we reached for SS24, Main Collection

- 100% on Active & Underwear (SS23 95%)
- 89% on Golf (SS23 87%)
- 100% on Swimwear (SS23 100%)
- 100% on Court (SS23 100%)
- 87% on Trekking (AW23 100%)
- 75% on Accessories (SS23 60%)

Sustainable and classified fabrics and treatments we use

- Recycled Polyester (from Pet)
- Recycled Polyamide (mainly from fishing net)
- Organic Cotton (cultured without chemicals and better for the farmers due to zero toxic)
- Recycleable products (that can be made into new garments)
- Biogradable products (that is biogradable by nature)

Decision taken by us as a company

- We do not use fur or leather
- We say no to "muesling wool"
- We use RDS down standard
- We don't use antibacterial treatments (Biocides)
- Clever Care  (The symbol will be found in all our garments)
- Hangtags in recycle paper and with soy based print
- We have recycled polyester in our shopping bags
- We are 100% Fluor Carbon free

SS24 Golf / Materials

CLOTHES CHIE PROGRAM

- This fabric is made of 86% Recycled polyester and 14% Elastane
- A super soft and thin twill fabric that feels light to the skin
- It has a 4-way stretch which allows great movement on the golf course
- The fabric has a quick dry function and is wrinkle free
- This program comes in full range of pants, skort, capri and Bermuda and the news for this season is our Geo print

NICKY PROGRAM

- Nicky is our bestselling jersey program made in 86% Recycled polyester and 14% Elastane
- The fabric has a quick dry function and is moisture wicking
- The whole program has panels with structured fabric which creates great breathability and ventilation
- This program comes in a full range of Sleeveless, Poloshirt, Dress, Skort and Longsleeve with full zip

BONNIE PROGRAM

- This fabric is made of 89% Recycled Polyamide and 11% Elastane
- The fabric is Breathable and moisture wicking
- It is also moisture wicking and quick dry
- It comes both in styles with mesh structured details and with printed details

BRENDA PROGRAM

- This fabric is made of 88% Recycled polyester (56% is in Seawool) and 12% elastane
- It has 4-way stretch for great movement and it is Quick dry
- It allows you to stay stay protected from the sun thanks to UPF 40+
- The fabric is anti static, anti odor and it has thermal regulation
- The products have Press creases and a relaxed straight fit

FRIDA PROGRAM

- This fabric is made of 86% Recycled polyester and 14% Elastane
- Inside has a brushed surface for warming function
- Breathable

STORM RAIN PROGRAM

Our waterproof products are made in high performance stretch fabric with biodegradable membrane backing. They are waterproof yet highly breathable. The waterproof garments are complete with taped seams and water-resistant zippers.

- Fluorocarbon-free
- Biodegradable membrane
- Soft, 2-way stretch fabric
- Windproof
- Breathable 10,000g/m²/24h
- Waterproof 10,000 mm
- Waterproof zippers
- Long zippers on pants

FORCE JACKET AND VEST

Stay warm during a chill day at the court in these styles with down filled panels and softshell fabric.

- Wind proof panels with woven channels that prevents down leaking.
- RDS down filling
- Softshell fabric with 3-layer function
- Wind and Water resistant
- Warming and soft fleece at inside of Softshell fabric
- Several pockets for your belongings

SS24 Court and Accessories / Materials

COURT

Alexis Styles

- Lightweight woven fabric in 92% recycled polyester
- 2-way stretch
- Inner shorts in 82% recycled polyester
- Soft tricot fabric in 4-way stretch
- One sidepocket at innershorts

Court Tights

- Made in 77% recycled polyester
- Soft and comfortable
- Breathable and moisture wicking fabric
- External ball pocket at back of waist
- Adjustable drawstring at waist
- Röhnisch logo at front
- High waist

Jersey Skort

- Made in 89% Recycled Polyester
- Moisture wicking breathable jersey fabric
- Inner shorts with pocket
- Regular fit

ACCESSORIES

Socks

- 70% Recycled Polyamide, 2% Elastane for best comfort
- Recycled yarn
- Breathable and moisture wicking yarn
- Light weight
- Reinforced heel and toe
- Arch support
- 2-pack

Bottles

- Metal water bottle for both warm and cold drinks.

Hats/Caps

- Using fabric from Golf collection for a good matching ability, mainly made in recycled polyesters and polyamides.

Size guide

RÖHNISCH SIZE CHARTS

Size	XXS	XS	S	M	L	XL	2XL	3XL
Chest (A)	76	82	88	94	100	108	116	124
Waist (B)	60	66	72	78	84	92	100	108
Seat (C)	84	90	96	102	108	115	122	129

Size	32	34	36	38	40	42	44	46	48	50	52
Chest (A)	76	80	84	88	92	96	100	104	110	117	124
Waist (B)	60	64	68	72	76	80	84	88	95	102	109
Seat (C)	84	88	92	96	100	104	108	112	118	124	130

HOW TO MEASURE

A: Measure your chest at its FULLEST point.

B: Measure your waist at its SMALLEST point.

C: Measure your seat at its FULLEST point.

Röhnisch Sportswear AB
Rohnisch.com

ÖREBRO OFFICE

Post box 6116
700 06 Örebro, Sweden
Pappersbruksallén 2
702 15 Örebro, Sweden

ORDER PHONE

+46 (0)19-32 16 00

STOCKHOLM OFFICE

Virkesvägen 24,
8 floor, 120 30
Stockholm, Sweden.
+46 (0)19-32 16 00

RÖHNISCH