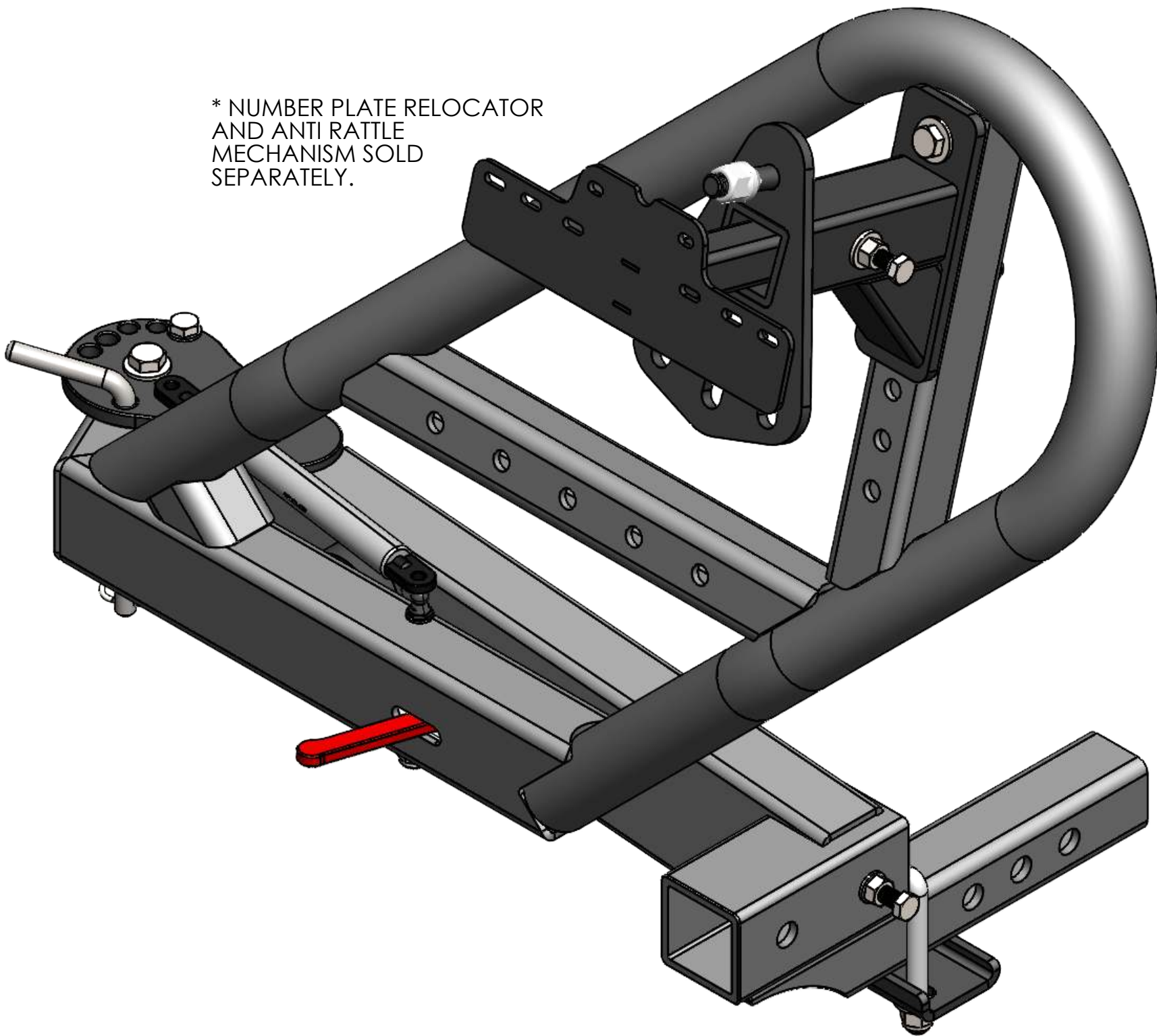


MIRACK

GEN 4 SWINGING SPARE WHEEL CARRIER OWNERS MANUAL AND INSTALLATION INSTRUCTIONS

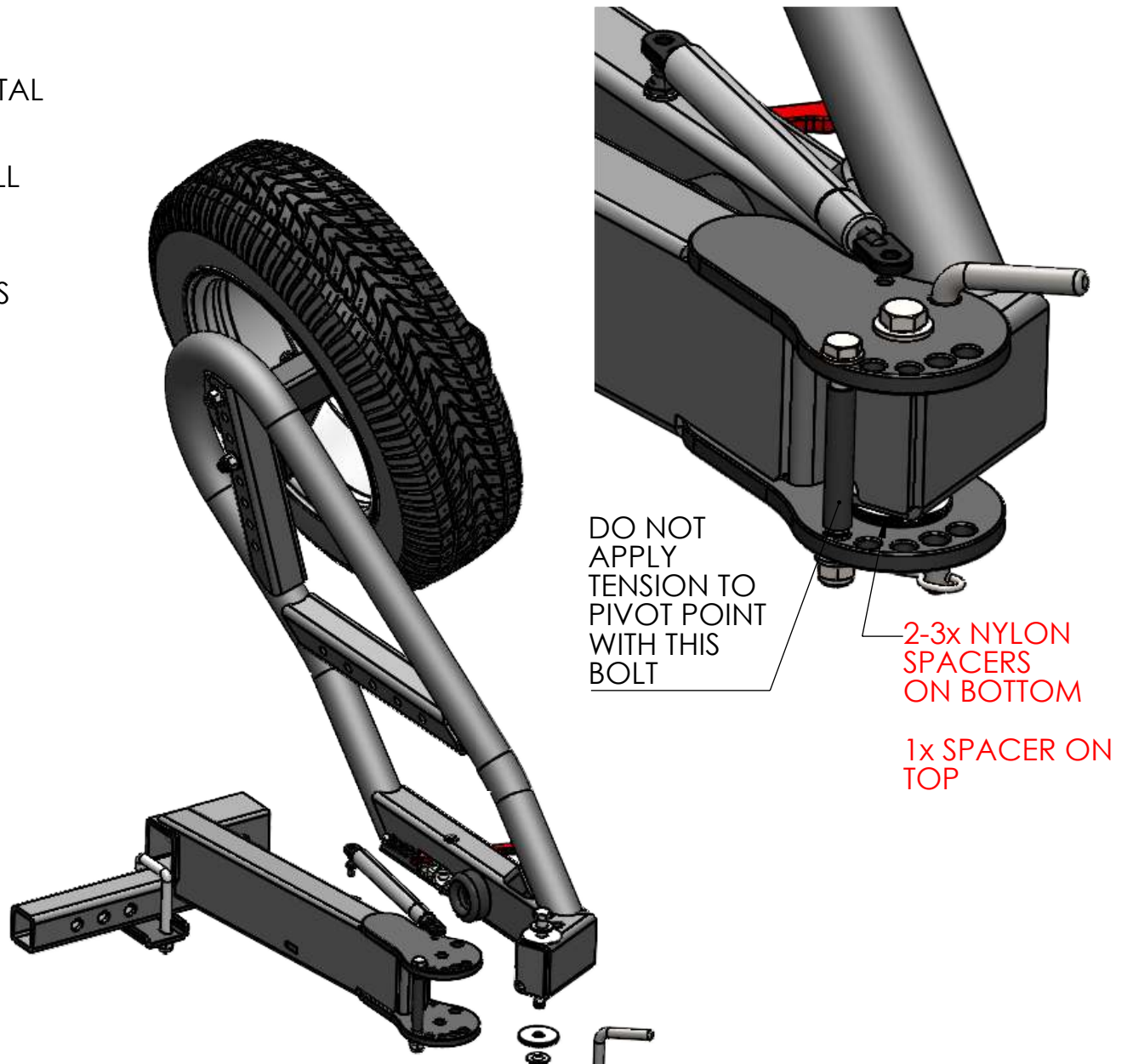
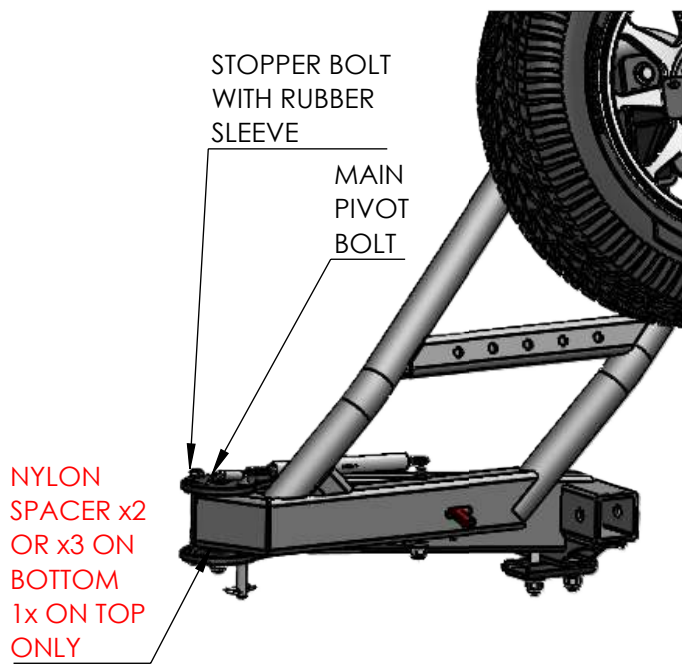
* NUMBER PLATE RELOCATOR
AND ANTI RATTLE
MECHANISM SOLD
SEPARATELY.



STEP 1:

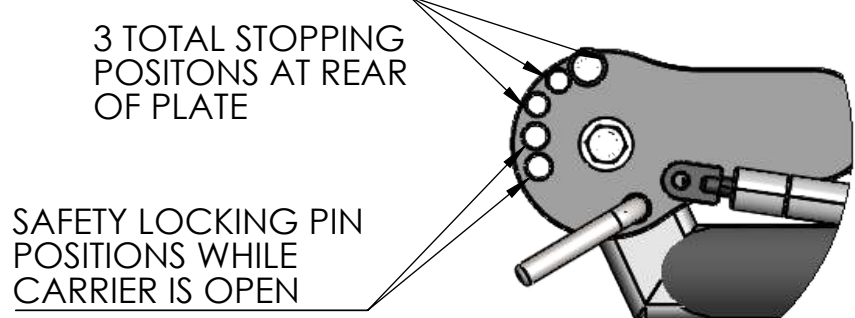
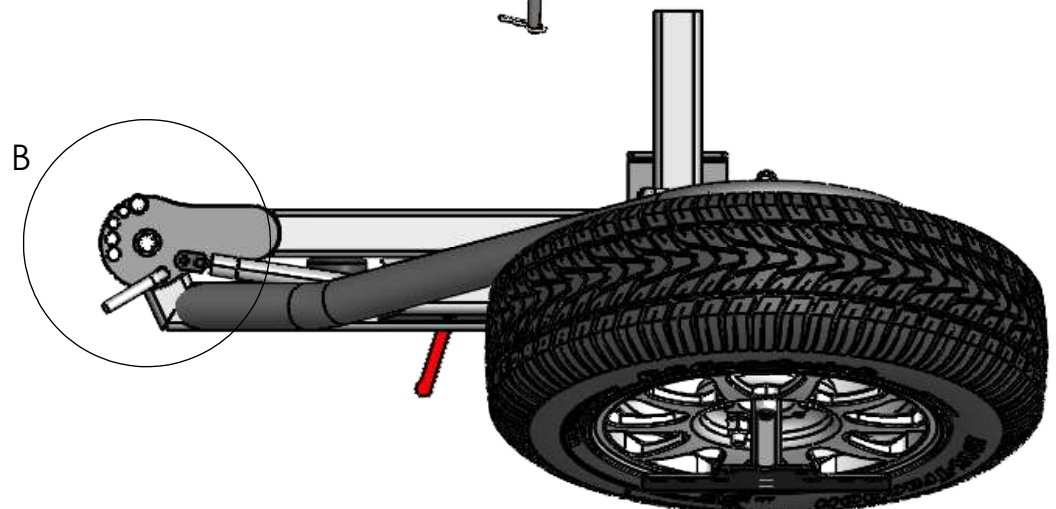
ATTACH SWINGARM TO MAIN HORIZONTAL ARM - DO THIS WITH THE PRODUCT INSERTED INTO YOUR VEHICLES TOWBAR AND PINNED OFF TO SECURE IT - THIS WILL MAKE THE ASSEMBLY PROCESS A LOT EASIER

TIGHTEN MAIN PIVOT BOLT UNTIL THERE IS SLIGHT TENSION IN THE SWINGING MOTION. IT SHOULD BE ABLE TO MOVE FREELY BUT WITH ENOUGH TENSION TO STOP IT SWINGING WHEN PUSHED BY HAND.



STEP 2:

PUT STOPPING BOLT WITH RUBBER SLEEVING INTO REQUIRED STOPPING POSITION. TIGHTEN ONLY UNTIL THE NUT TOUCHES THE STEEL PLATE - DO NOT APPLY TENSION TO STEEL PLATE AS THIS WILL SQUEEZE THE PIVOT POINT AND CAUSE EXCESSIVE WEAR. THIS IS PURELY A LOCATED STOPPING POSITION FOR THE CARRIER TO KNOCK AGAINST WHEN SWUNG OPEN.



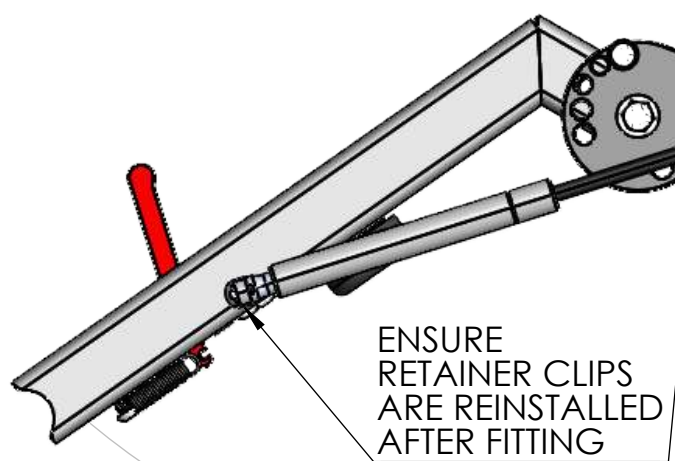
DETAIL B SCALE 1 : 4

STEP 3:

MOUNT STRUT TO BOTH PARTS - SWING THE ARM OPEN TO ITS FURTHEST POSITION TO ALLOW THE STRUT TO BE PUSHED INTO PLACE. IT WILL NEED TO BE COMPRESSED SLIGHTLY.

STEP 4:

ENSURE LOCKING PIN IS TIGHT AND DOES NOT CLASH WITH CARRIER IN CLOSED POSITION. LOOSEN AND ADJUST TO DESIRED POSITION.

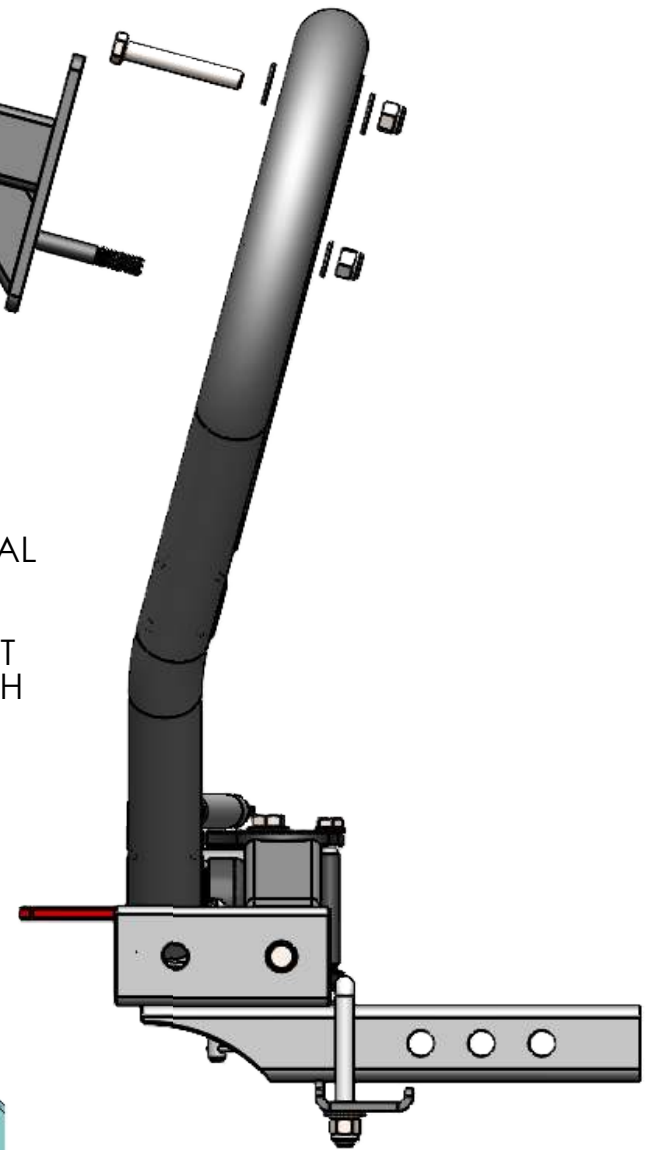


INSERT NUMBER PLATE
RELOCATOR AFTER
MOUNTING WHEEL.
INSERT THROUGH CENTRE
OF RIM. REMOVE SLOP
BY TIGHTENING GRUB
SCREW LOCATED ON THE
WHEEL MOUNTING
BRACKET.



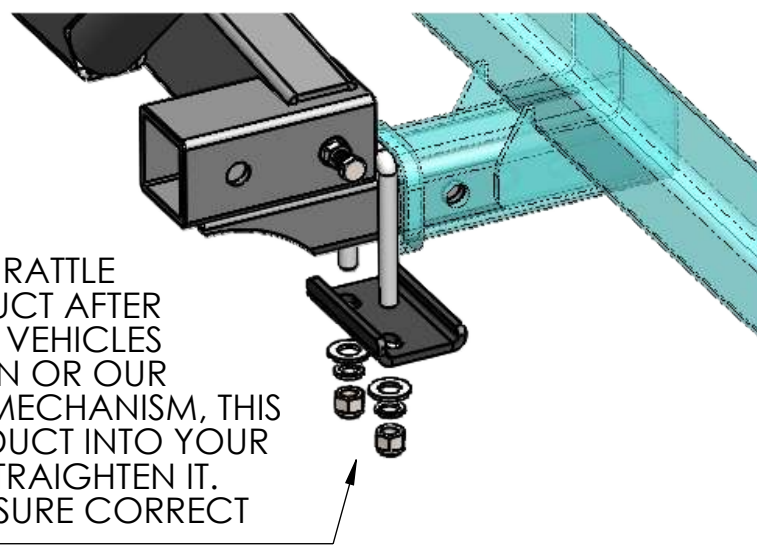
STEP 3:

ATTACH WHEEL
MOUNT TO VERTICAL
MOUNTING TUBE -
MOUNTS WITH 2X
HOLES AND ADJUST
ALONG THE LENGTH
OF THE TUBE.



STEP 5:

INSTALL EXTERNAL ANTI RATTLE
MECHANISM TO PRODUCT AFTER
MOUNTING INTO YOUR VEHICLES
TOWBAR WITH HITCH PIN OR OUR
INTERNAL ANTI RATTLE MECHANISM, THIS
WILL TIGHTEN THE PRODUCT INTO YOUR
VEHICLES HITCH AND STRAIGHTEN IT.
TIGHTEN EVENLY TO ENSURE CORRECT
FITMENT.



SAFETY NOTES / DISCLAIMERS

MIRACK PRODUCTS does not take responsibility for damages caused to persons or property caused by incorrect fitment, or usage of this product. Be safe, always practice safe towing procedures - including correct safety chain attachment to your vehicle. Do not exceed your vehicles safe towing limits. Do not overload this product. Always ensure towing pins are secured with nuts and safety clips where possible, and that the locking pin securing the product vertical is always used when travelling. Always ensure fixtures are tightened and regularly checked for damage.

Do NOT tamper with the gas struts fitted to this product. They are pressurized and can cause serious injury if damaged.



**DO NOT TOW MORE THAN
2T WITH THIS PRODUCT. PRODUCTS
DOWN BALL RATING = 200KG.**

Do NOT exceed your vehicles tow ratings if they are lower than 2T or 200KG on the ball. Contact us if you are unsure how to use this product safely.