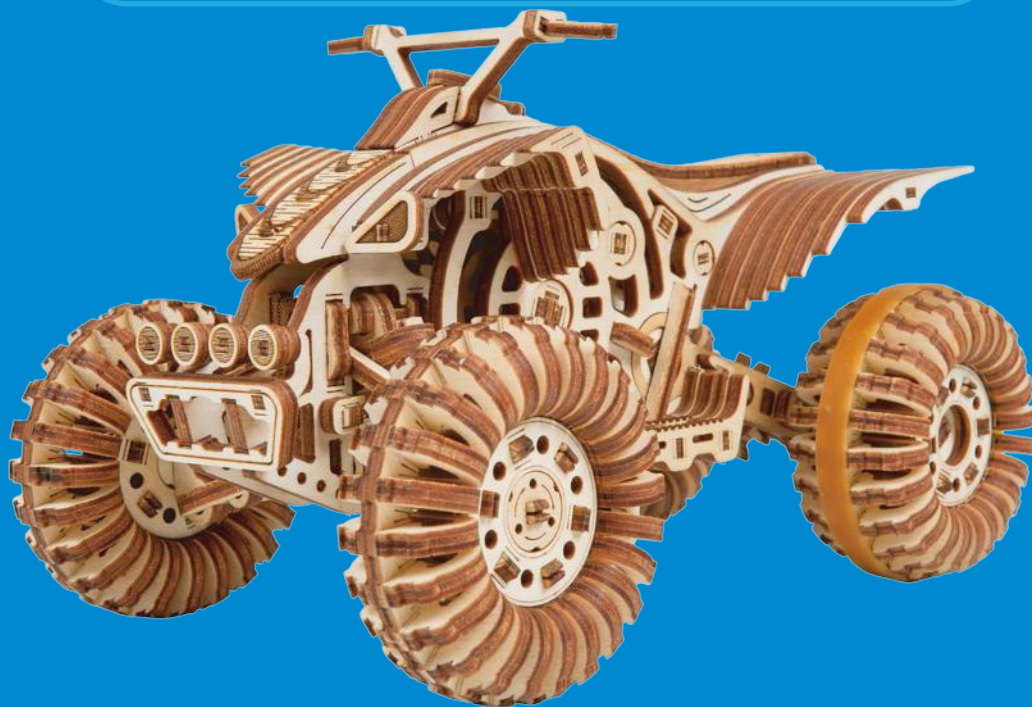


WOOD TRICK

ENGINEERING
JOOOOOOOOOOY

MODERN
MACHINERY
SERIES



MECHANICAL MODELS & KITS
**RAPTOR
QUAD BIKE**

LEVEL 3

339
PIECES

WDTK075

WSD TRIK

ENG Attention! **UKR** Увага! **DEU** Achtung! **FRA** Attention!
POL Uwaga! **SPA** Atención! **ITA** Attenzione!



ENG Do not set fire to it! **UKR** Не підпалювати! **DEU** Nicht anzünden!
FRA Ne pas allumer! **POL** nie podpalaj! **SPA** No prender fuego! **ITA** Non dare fuoco!



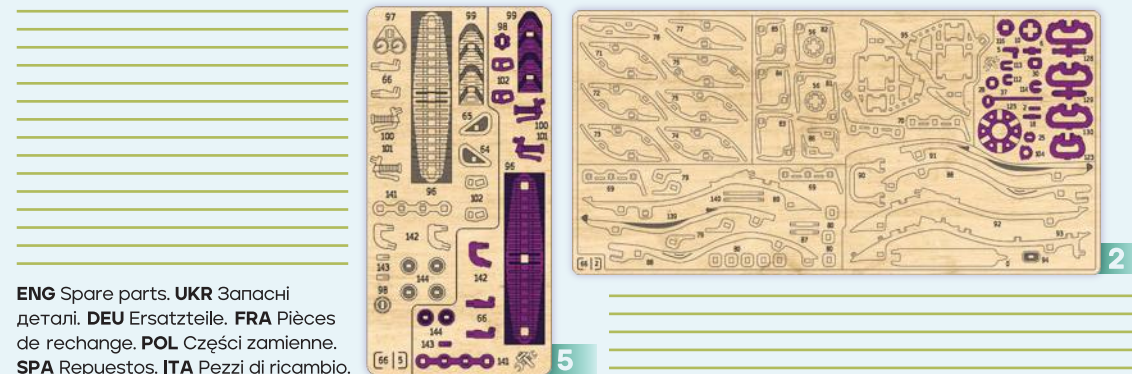
ENG Caution! Sharp parts! **UKR** Обережно! Гострі деталі! **DEU** Vorsichtig!
Scharfe Details! **FRA** Attention Détails tranchants! **POL** Uwaga! Ostre
szczegóły! **SPA** Cuidado! Piezas cortantes! **ITA** Attenzione! Dettagli nitidi!

ENG Recommendation: if you have difficulty in connecting parts, treat toothpicks with paraffin. **UKR** Рекомендація: якщо виникли складнощі при скріпленні деталей, обробіть зубочистки парафіном. **DEU** Empfehlung: Wenn Sie Schwierigkeiten haben, Teile zu verbinden, behandeln Sie Zahnstocher mit Paraffin. **FRA** Recommandation: si vous avez des difficultés pièces de fixation, traitez les cure-dents avec de la paraffine. **POL** Zalecenie: jeśli masz trudności z połączeniem części, obsługiwać wykałaczkę parafiną. **SPA** Recomendación: si tiene dificultades para fijar piezas, trate mondadientes con parafina. **ITA** Raccomandazione: in caso di difficoltà nel fissare le parti, trattare gli stuzzicadenti con paraffina.

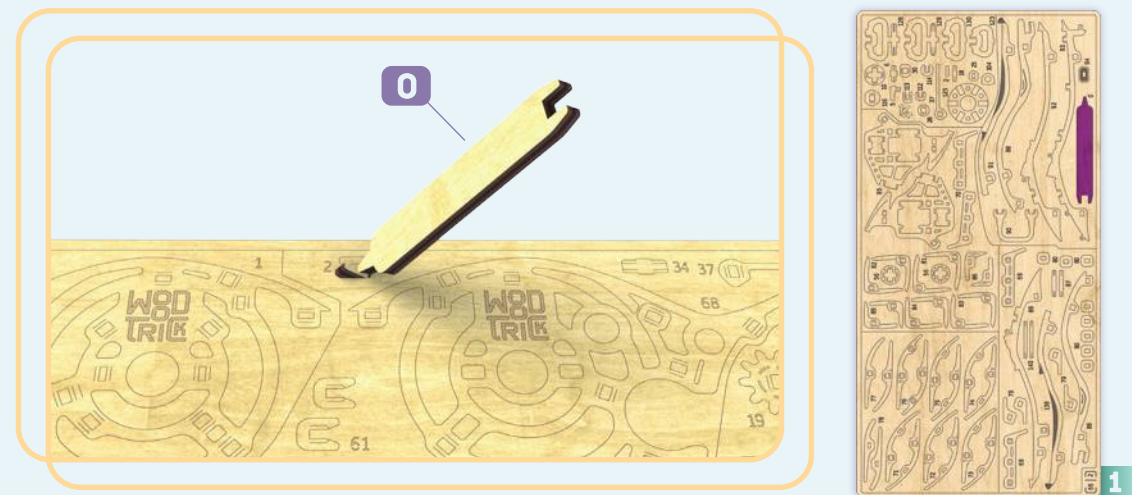
ENG The assembling of constructor does not require to use glue. **UKR** Конструктор не вимагає застосування клею. **DEU** Für die Montage des Konstruktors ist kein Klebstoff erforderlich. **FRA** Aucune colle n'est nécessaire pour monter le constructeur. **POL** Montaż konstruktora odbywa się bez kleju. **SPA** El montaje constructor no requiere el uso de pegamento. **ITA** L'assemblaggio non richiede l'uso di colla.

ENG Fragile details! Be careful when removing the constructor from the card! **UKR** Крихкі деталі! Під час вилучення конструктора з карти будьте обережні! **DEU** Zerbrechliche Details! Seien Sie vorsichtig, wenn Sie den Konstruktor von der Karte entfernen! **FRA** Détails fragiles! Faites attention en retirant les éléments de la construction de la carte! **POL** Kruche szczegóły! Przedmioty należy wyjmować z karty ostrożnie! **SPA** Detalles frágiles! Sea prudente al sacar elementos de mecano del tarjeta! **ITA** Dettagli fragili! Gli elementi vanno estratti dalla scheda con cautela!

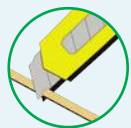
ENG All elements that interlock must be sanded with sandpaper and greased with paraffin. **UKR** Всі елементи, що входять у зачеплення необхідно зачистити наждачним папером і змастити парафіном. **DEU** Alle eingreifenden Teile müssen mit Sandpapier gereinigt und mit Paraffin eingefettet werden. **FRA** Il faut nettoyer tous les éléments de l'accrochage à l'aide du papier-meri et les traiter avec de la paraffine. **POL** Wszystkie zaczepione elementy należy oczyścić papierem ściernym i nasmarować parafiną. **SPA** Todos los elementos que se enganchan deben limpiarse con papel de lija y engrasarse con parafina. **ITA** Tutti gli elementi agganciati devono essere puliti con carta vetrata e ingrassati con paraffina.



ENG Spare parts. **UKR** Запасні деталі. **DEU** Ersatzteile. **FRA** Pièces de rechange. **POL** Części zamienne. **SPA** Repuestos. **ITA** Pezzi di ricambio.



ENG Auxiliary tool for assembling or measuring distances. **UKR** Допоміжний інструмент для збірки або вимірювання відстаней. **DEU** Hilfswerkzeug zum Montieren oder Messen von Abständen. **FRA** Outil auxiliaire pour assembler ou mesurer des distances. **POL** Narzędzie pomocnicze do montażu lub pomiaru odległości. **SPA** Herramienta auxiliar para ensamblar o medir distancias. **ITA** Strumento ausiliario per l'assemblaggio o la misurazione delle distanze.



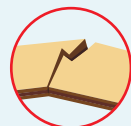
ENG Cut off a toothpick. UKR Відрізати зубочистку.
 DEU Schneiden Sie einen Zahnstocher ab. FRA Couper la cure-dent. POL Odetniż wykałaczkę. SPA Cortar un palillo de dientes. ITA Tagliare lo stecchino.



ENG Start lever. UKR Важіль пуску. DEU Starthebel. FRA Levier de démarrage. POL Dźwignia rozruchu. SPA Palanca de arranque. ITA Leva di avviamento.



ENG Remove burrs. UKR Видалити задирки. DEU Niednägel entfernen. FRA Enlever les bavures. POL Usuń zadziory. SPA Quitar rebabas. ITA Eliminare le bave.



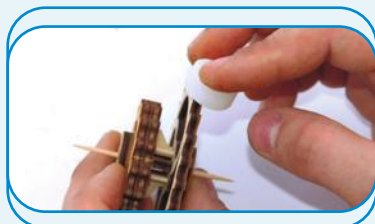
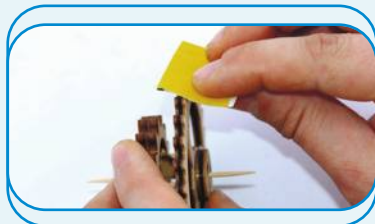
ENG Caution, fragile detail! UKR Обережно, крихка деталь!
 DEU Vorsicht, zerbrechliches Detail! FRA Attention, détail fragile!
 POL Uwaga, delikatny szczegół! SPA ¡Atención, frágiles detalles! ITA Attenzione, dettaglio fragile!



ENG Lubricate with paraffin. UKR Змастити парафіном.
 DEU Mit dem Paraffin schmieren. FRA Lubrifier à la paraffine.
 POL Nasmaruj parafiną. SPA Lubricar con parafina.
 ITA Lubrificare con paraffina.



ENG Assembly in mirror reflection. UKR Збірка в дзеркальному відображенні. DEU Montage in spiegelreflexion.
 FRA Assemblage en réflexion spéculaire. POL Montaż w odbiciu lustrzanym. SPA Montaje en reflexión especular. ITA Assemblaggio in riflessione speculare.

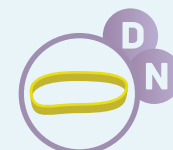


ENG Design kit can be tightly connected in some places, so that the assembled model has solidity and reliability. We recommend using pliers and box cutter for a more convenient design kit assembly. UKR Конструктор може в деяких місцях туго з'єднатися, для того, щоб зібрана модель мала міцність та надійність. Для більш зручної збірки конструктора, рекомендуємо використовувати плоскогубці та канцелярський ніж. DEU Der Konstruktor kann an einigen Stellen keine gute Verbindung herstellen, so daß das zusammengebaute Modell eine ausreichende Festigkeit und Zuverlässigkeit aufweist. Für eine bequemere Montage des Konstrukteurs empfehlen wir die Verwendung einer Zange und eines Schreibwarenmessers. FRA Le jeu de construction peut être étroitement connecté à certains endroits, pour que le modèle assemblé soit solide et fiable. Pour un assemblage plus pratique de jeu de construction, nous vous recommandons d'utiliser une pince et un couteau à papeterie. ITA Le jeu de construction peut être étroitement connecté à certains endroits, pour que le modèle assemblé soit solide et fiable. Pour un assemblage plus pratique de jeu de construction, nous vous recommandons d'utiliser une pince et un couteau à papeterie. SPA Le jeu de construction peut être étroitement connecté à certains endroits, pour que le modèle assemblé soit solide et fiable. Pour un assemblage plus pratique de jeu de construction, nous vous recommandons d'utiliser une pince et un couteau à papeterie. POL Le jeu de construction peut être étroitement connecté à certains endroits, pour que le modèle assemblé soit solide et fiable. Pour un assemblage plus pratique de jeu de construction, nous vous recommandons d'utiliser une pince et un couteau à papeterie.

ENG Warning! For the correct operation of this model, it is necessary to clean carefully and to lubricate all rubbing parts with paraffin during assembly. All mechanisms must rotate freely. UKR Увага! Для коректної роботи даної моделі, необхідно при збірці ретельно зачищати, змащувати парафіном усі деталі, які труться. Усі механізми повинні вільно обертатися. FRA Attention! Pour le bon fonctionnement de ce modèle, il est nécessaire lors du montage de nettoyer et lubrifier soigneusement toutes les pièces à friction avec de la paraffine. Tous les mécanismes doivent tourner librement. SPA ¡Atención! Para el funcionamiento adecuado de este modelo a la hora de ensamblaje se recomienda alisar y lubricar cuidadosamente con parafina todos los detalles frotantes. Todos los mecanismos deben girar libremente. ITA Attenzione! Per il corretto funzionamento di questo modello, durante il montaggio, è necessario pulire e lubrificare accuratamente tutte le parti di sfregamento con paraffina. Tutti i meccanismi devono ruotare liberamente. DEU Hinweis! Für einen korrekten Betrieb dieses Modells ist bei dem Zusammenbau erforderlich, alle Reibteile sorgfältig auszuschrubben und mit Paraffin zu schmieren. Alle Bauteile sollen sich frei drehen. POL Uwaga! Aby ten model działał prawidłowo, podczas montażu wszystkie detale trące muszą być dokładnie oczyszczone i nasmarowane parafiną. Wszystkie mechanizmy muszą się swobodnie obracać.



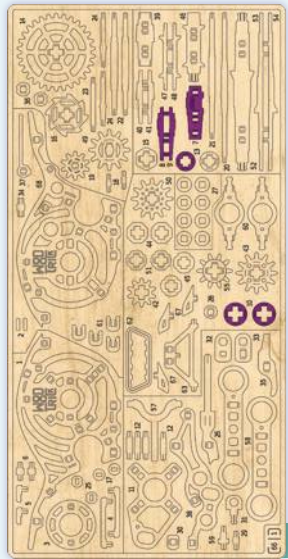
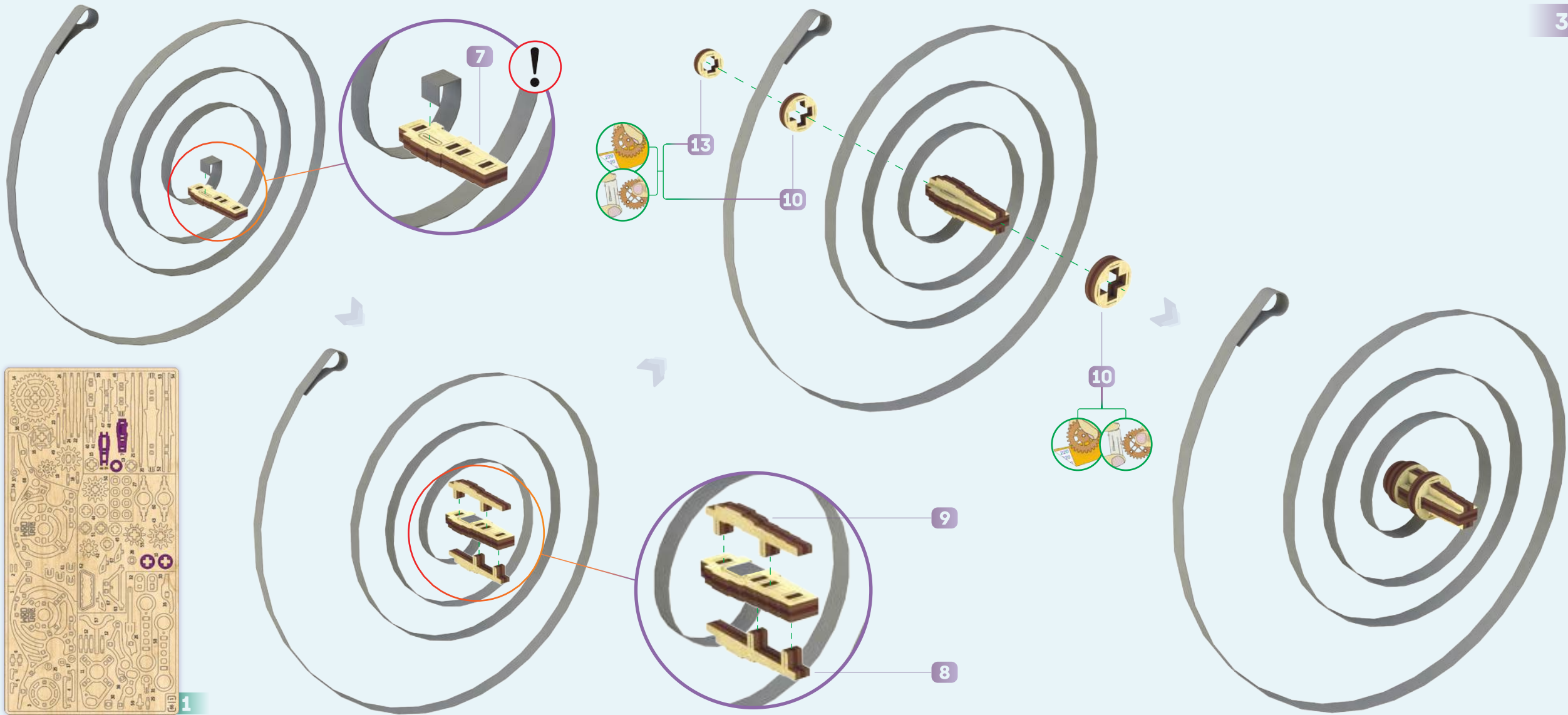
ENG Note! UKR Звернути увагу!
 DEU Aufgepasst! FRA Faites attention!
 POL Uwaga! SPA ¡Presta atención!
 ITA Presta attenzione!

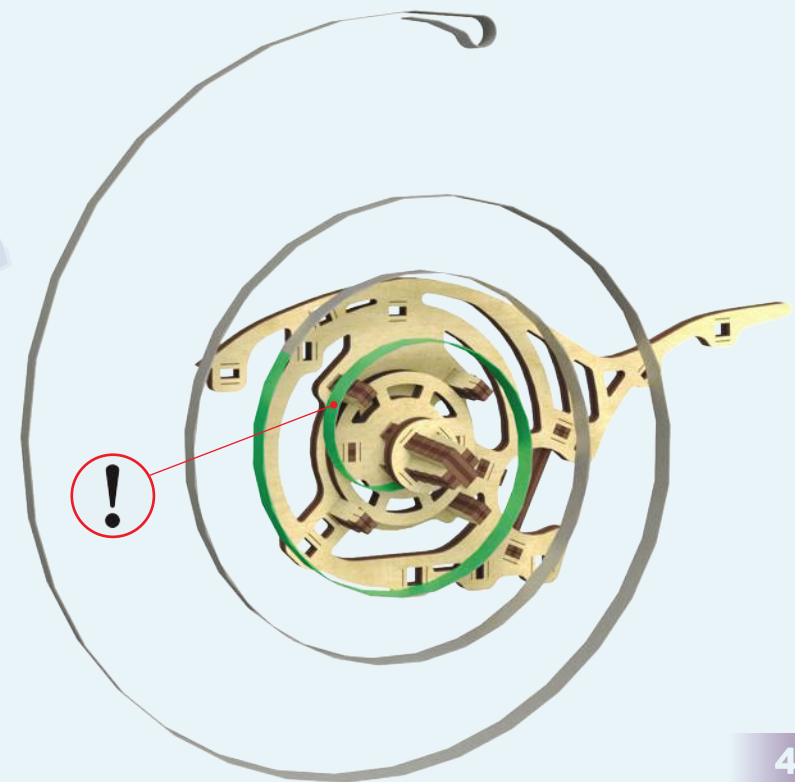
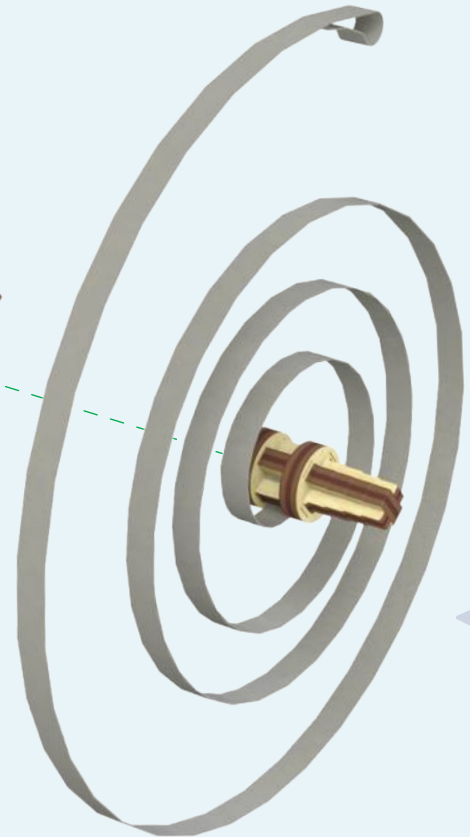
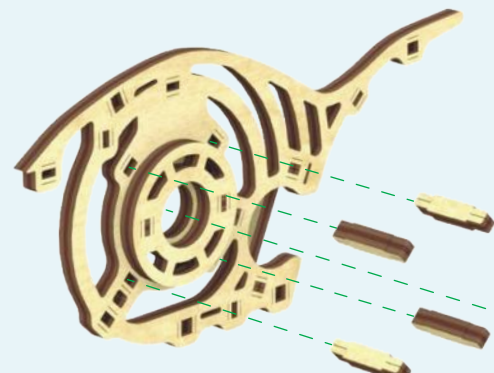
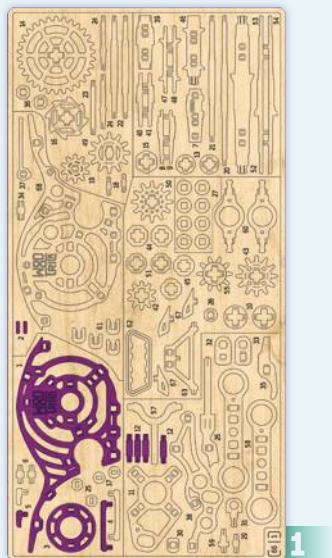
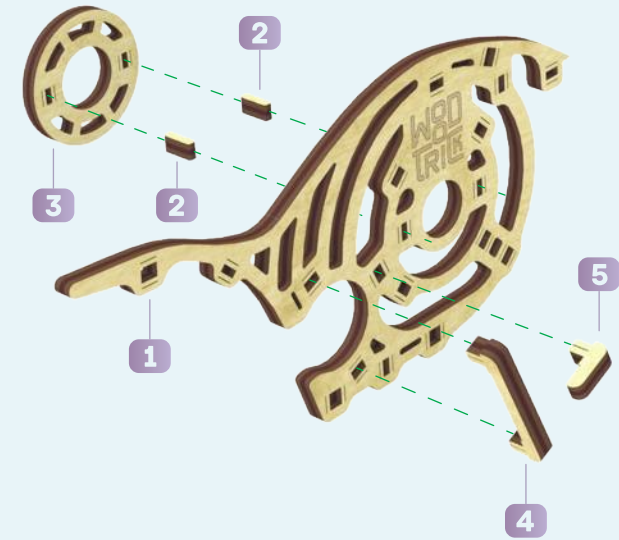


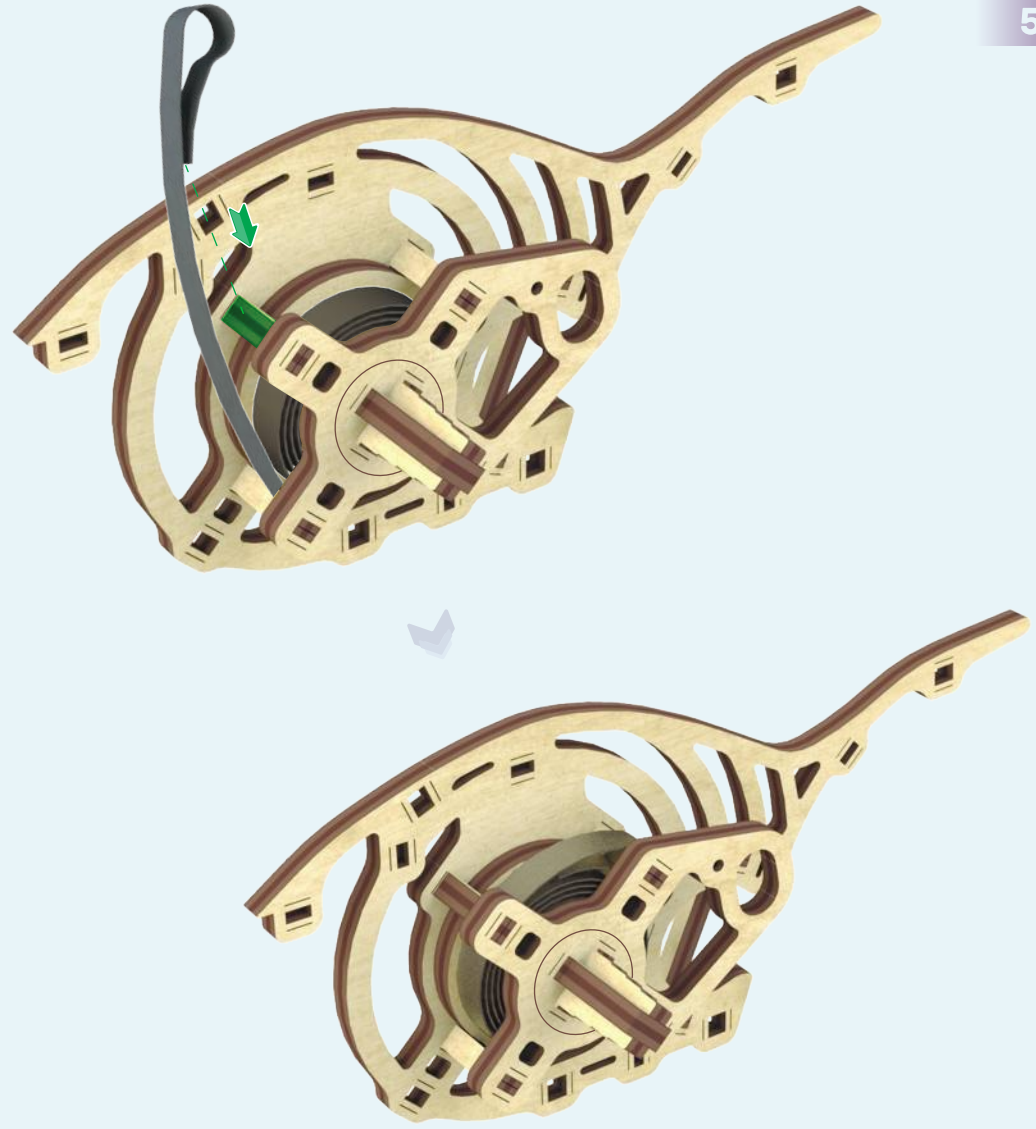
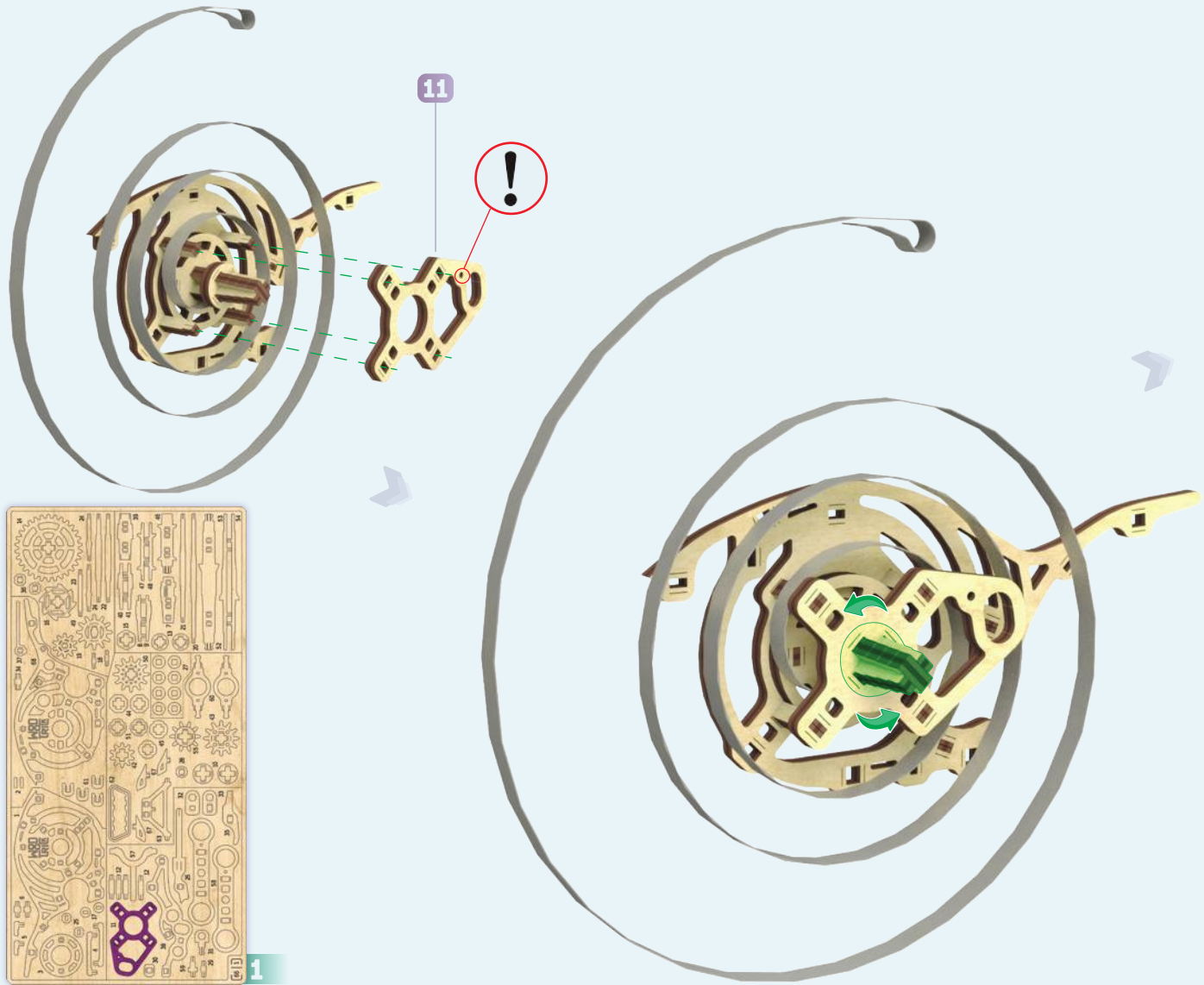
ENG Wide rubber band. UKR Широка резинка. DEU Breites Gummiband. FRA Large bande élastique. POL Szeroka gumka. SPA Banda de goma ancha. ITA Ampio elastico.

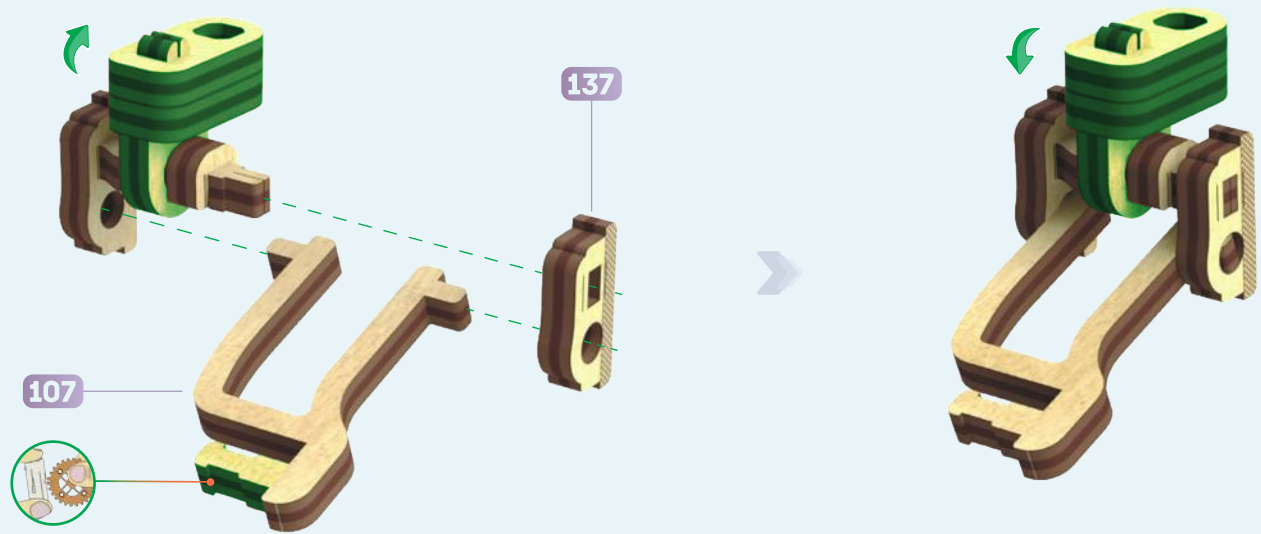
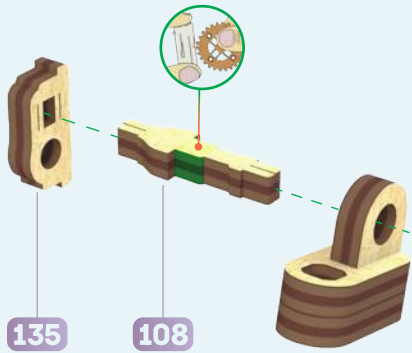
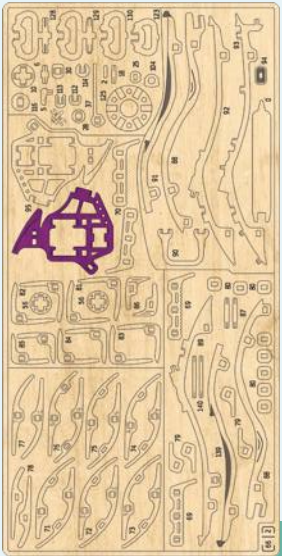
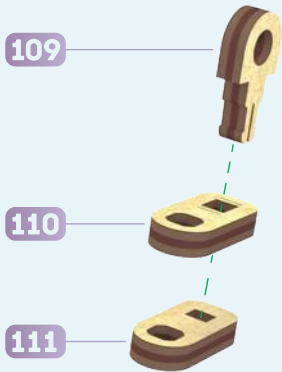
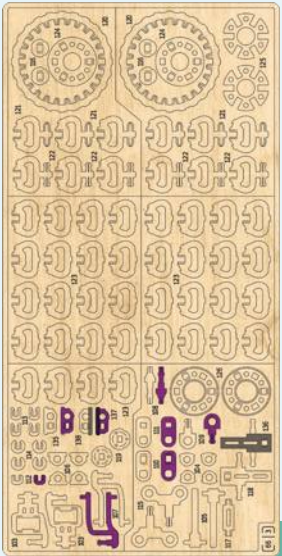


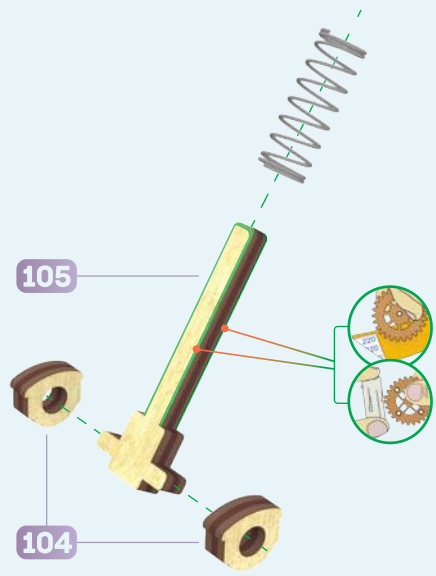
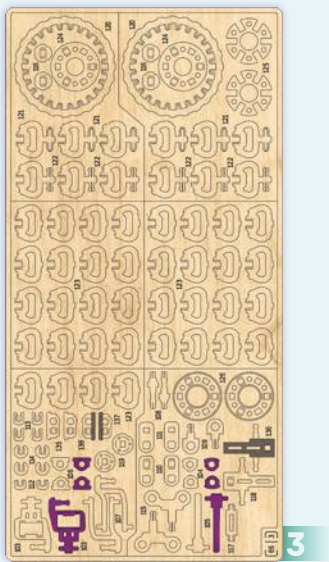
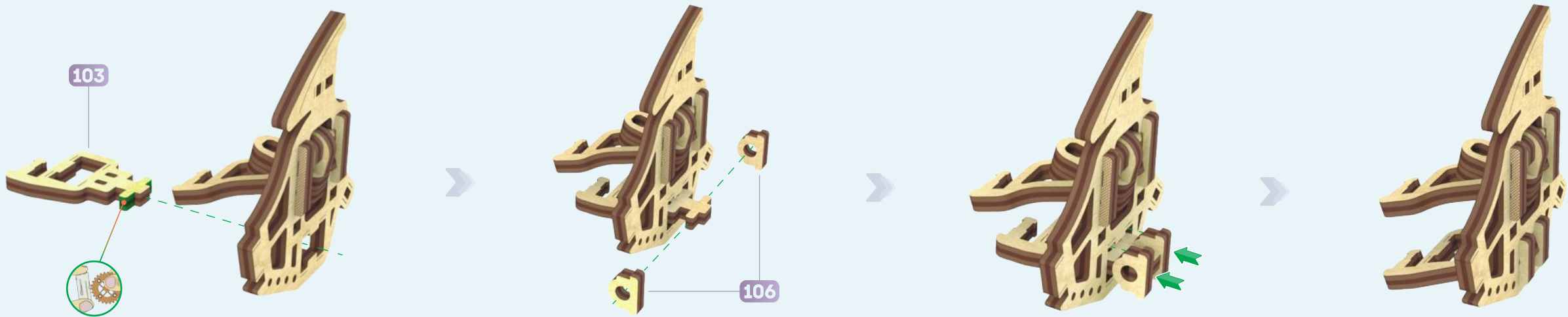
ENG Assembly is completed. UKR Збірка закінчена. DEU Montage abgeschlossen. FRA Assemblée terminée. POL Montaż zakończony. SPA Ensamblaje completada. ITA L'assemblaggio è finito.





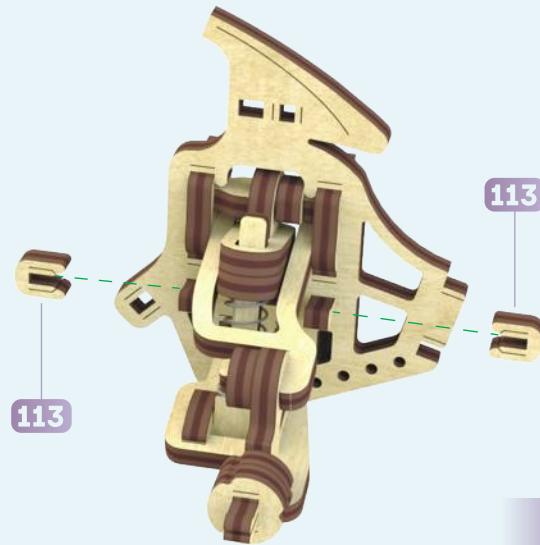
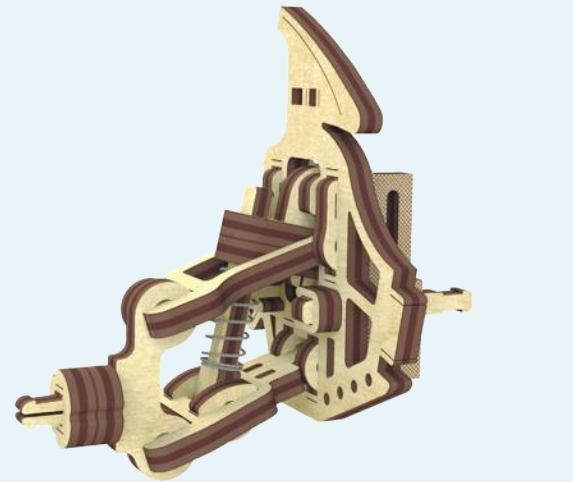
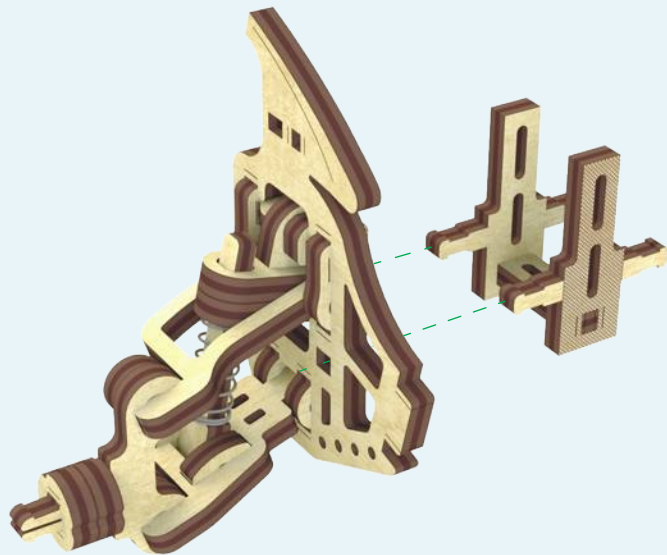
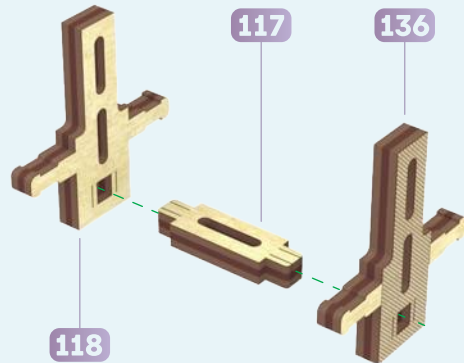
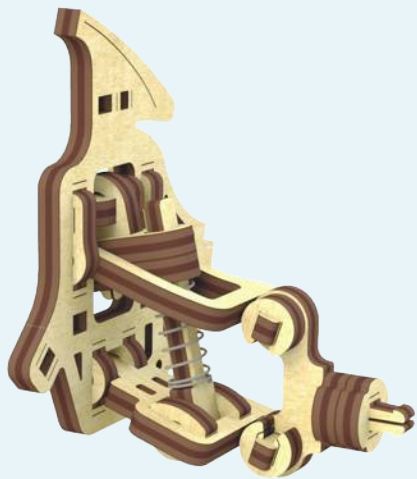






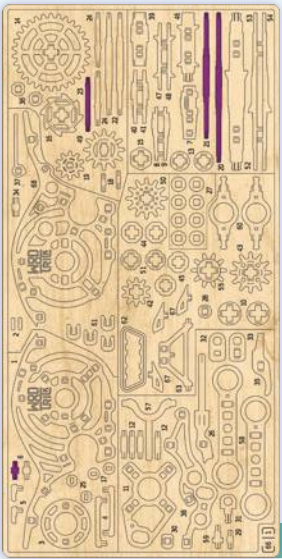
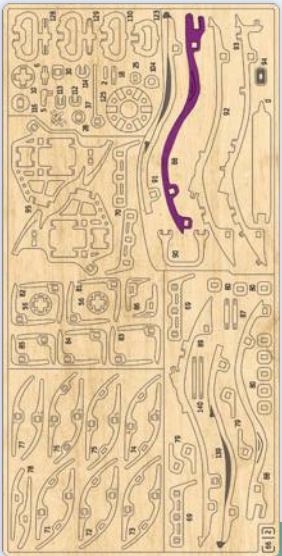
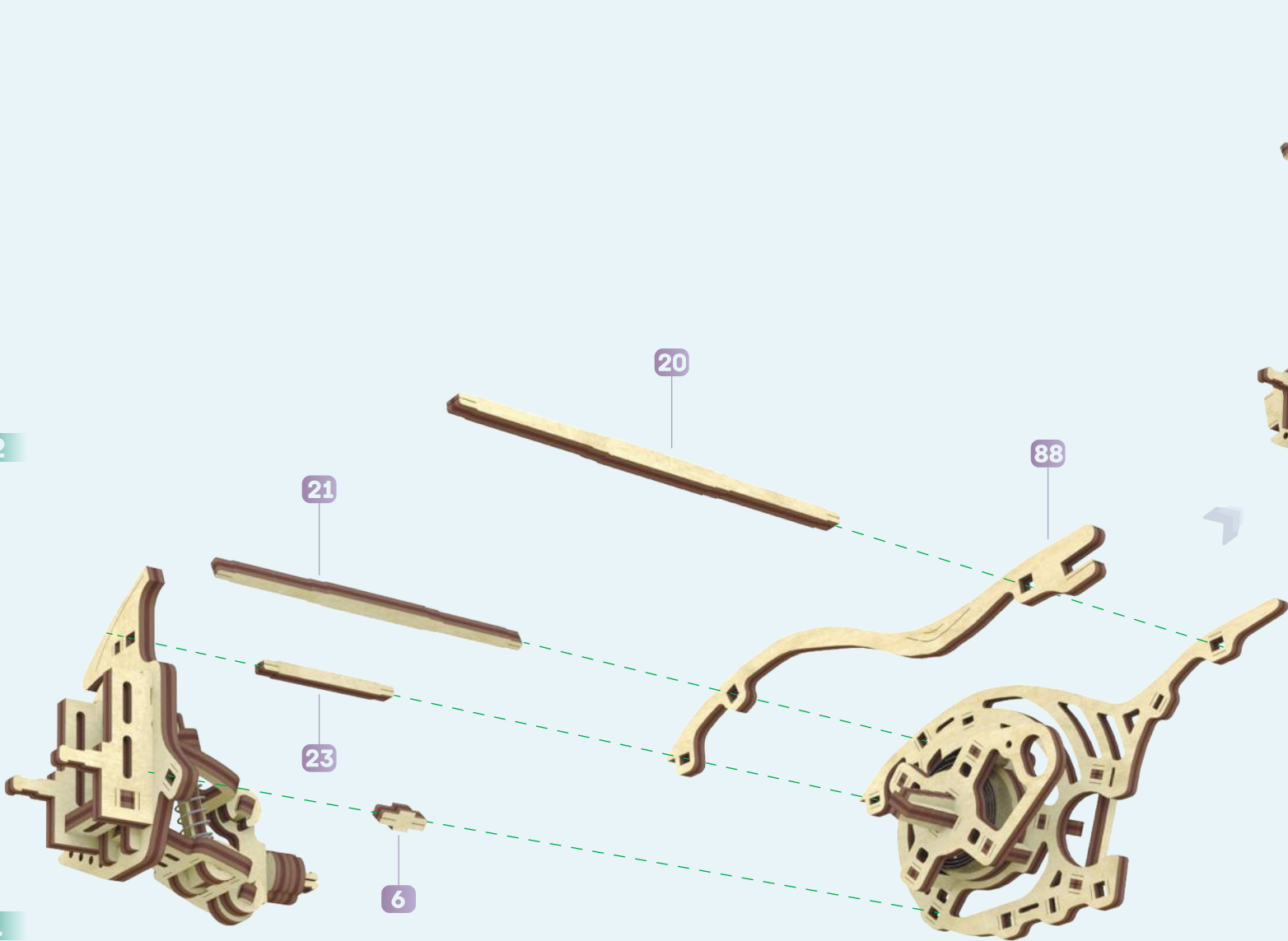
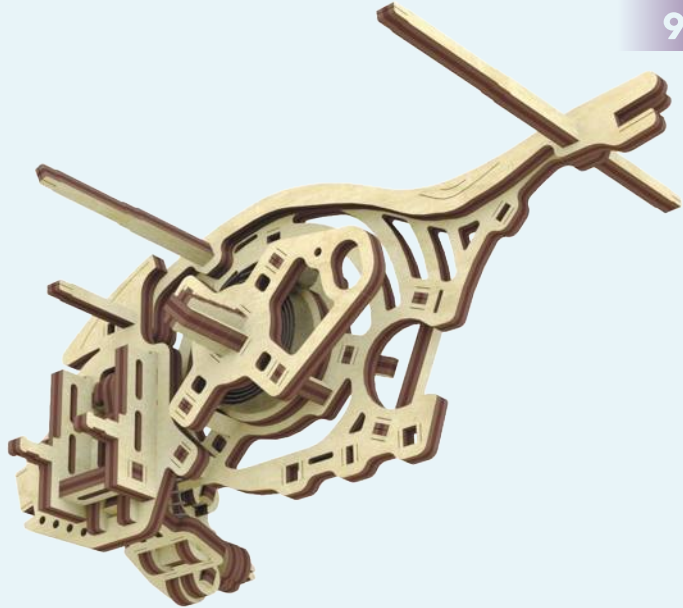


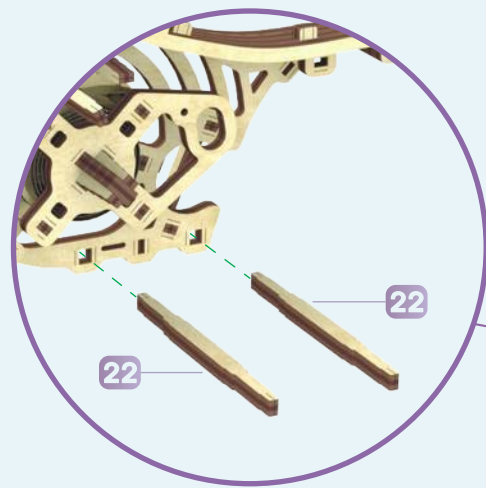
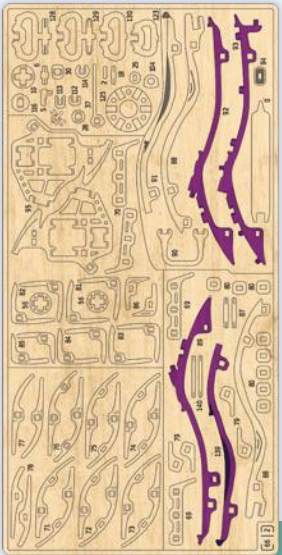
3

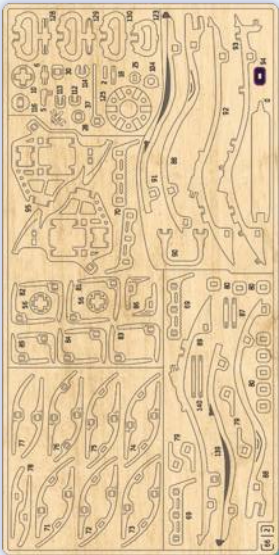


113

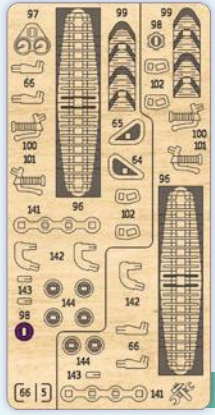
113







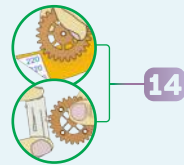
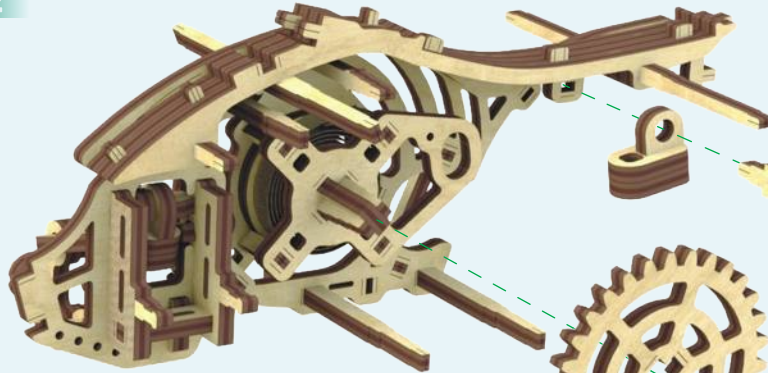
2



5



1



14

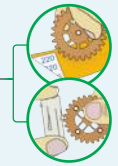


15



16

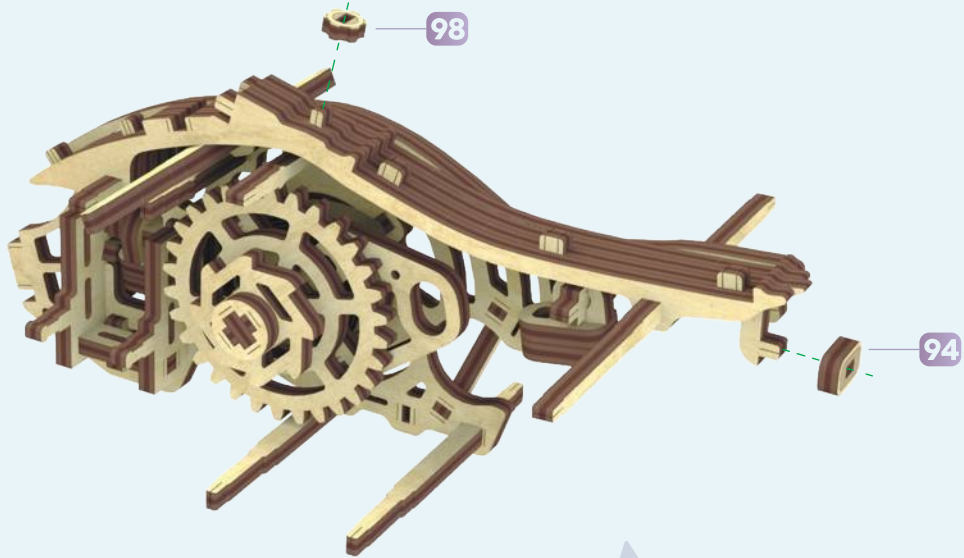
13



31

33

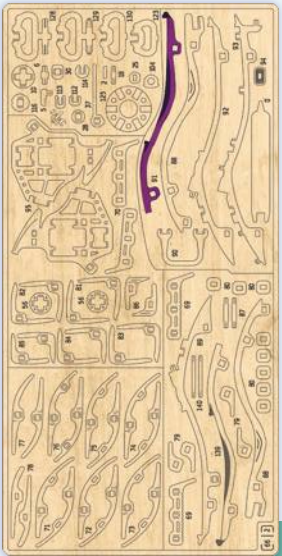
32



98

94

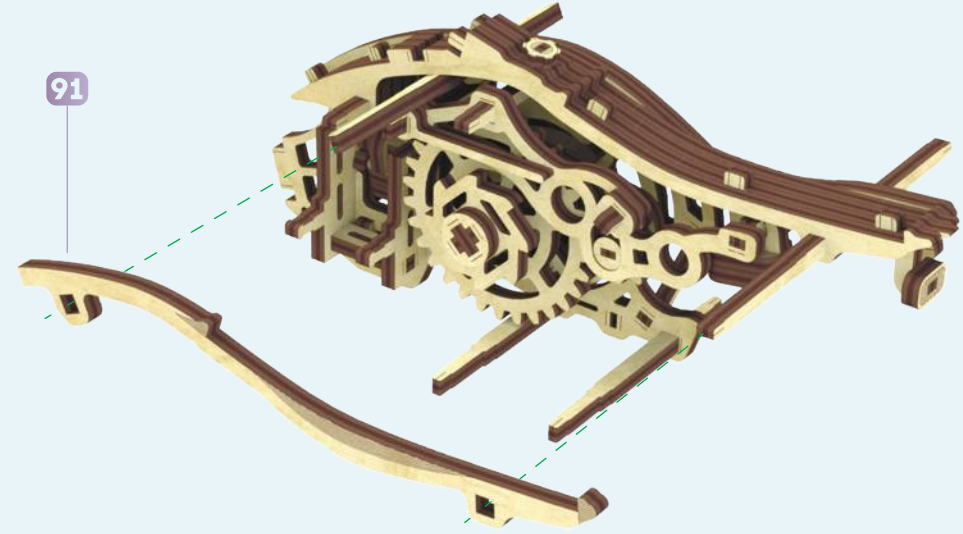
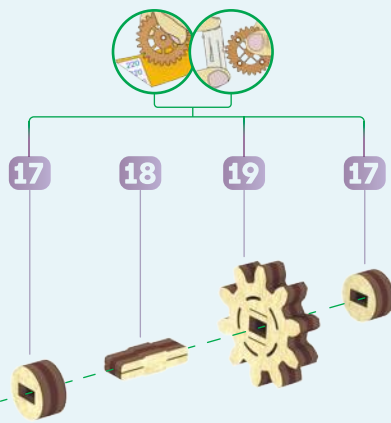
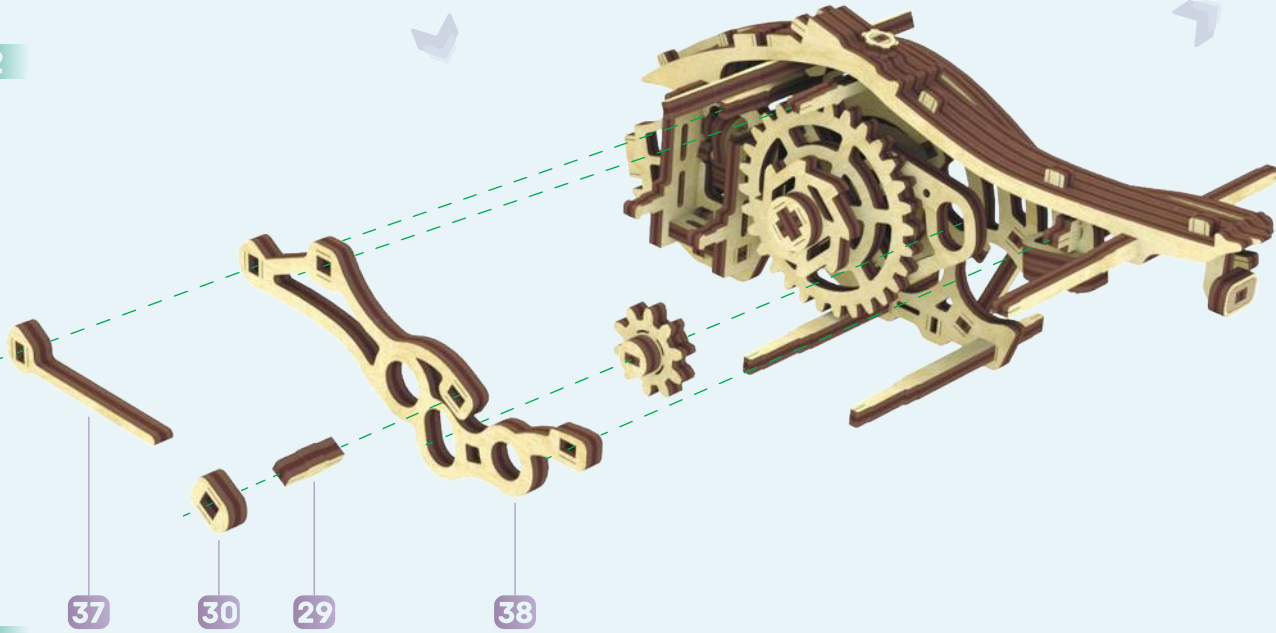


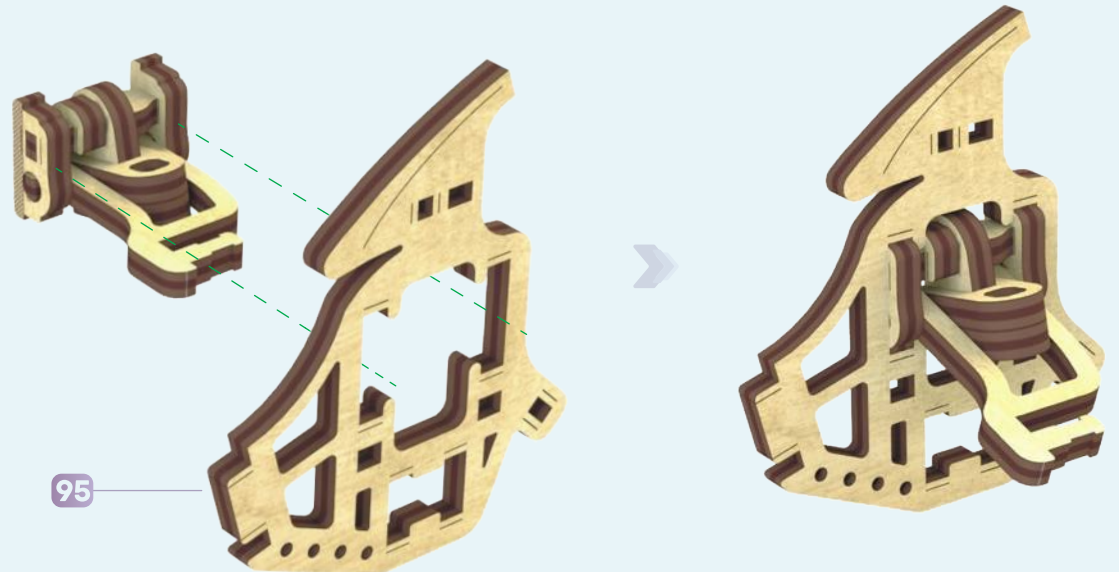
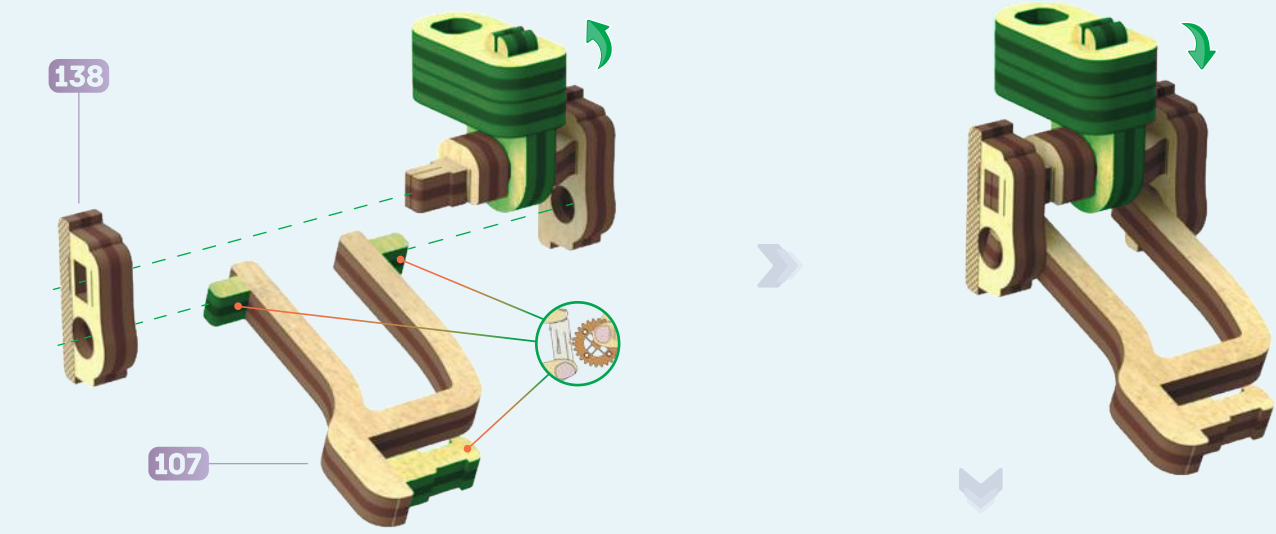
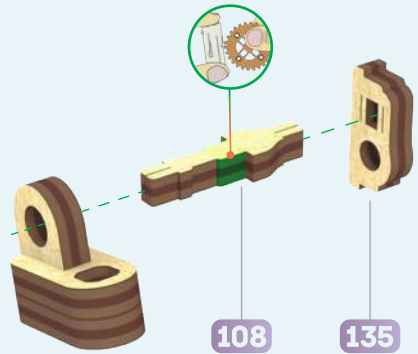
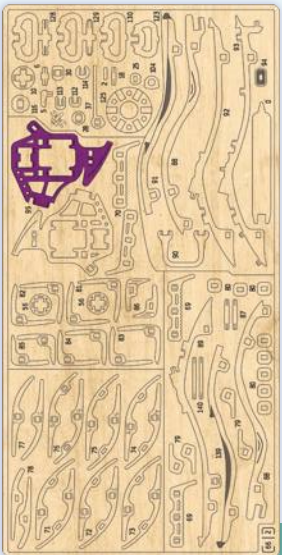
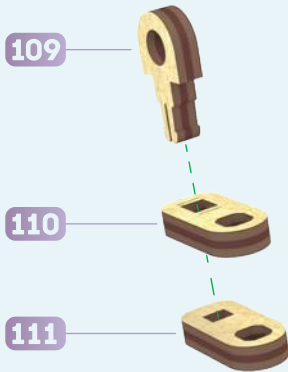
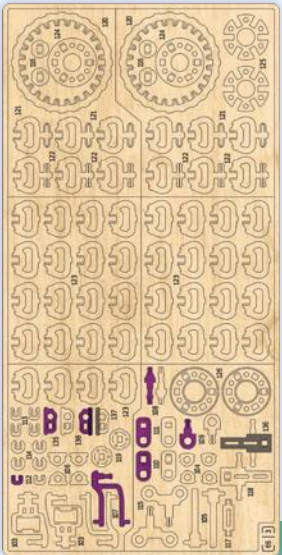


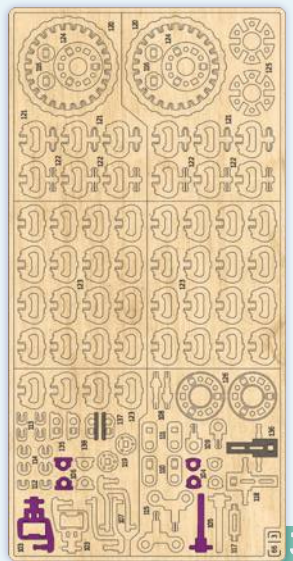
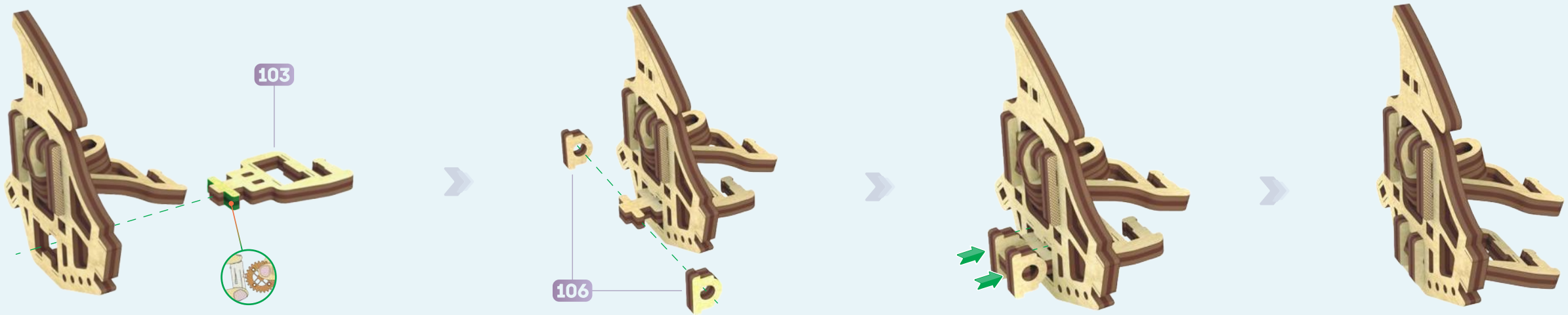
2

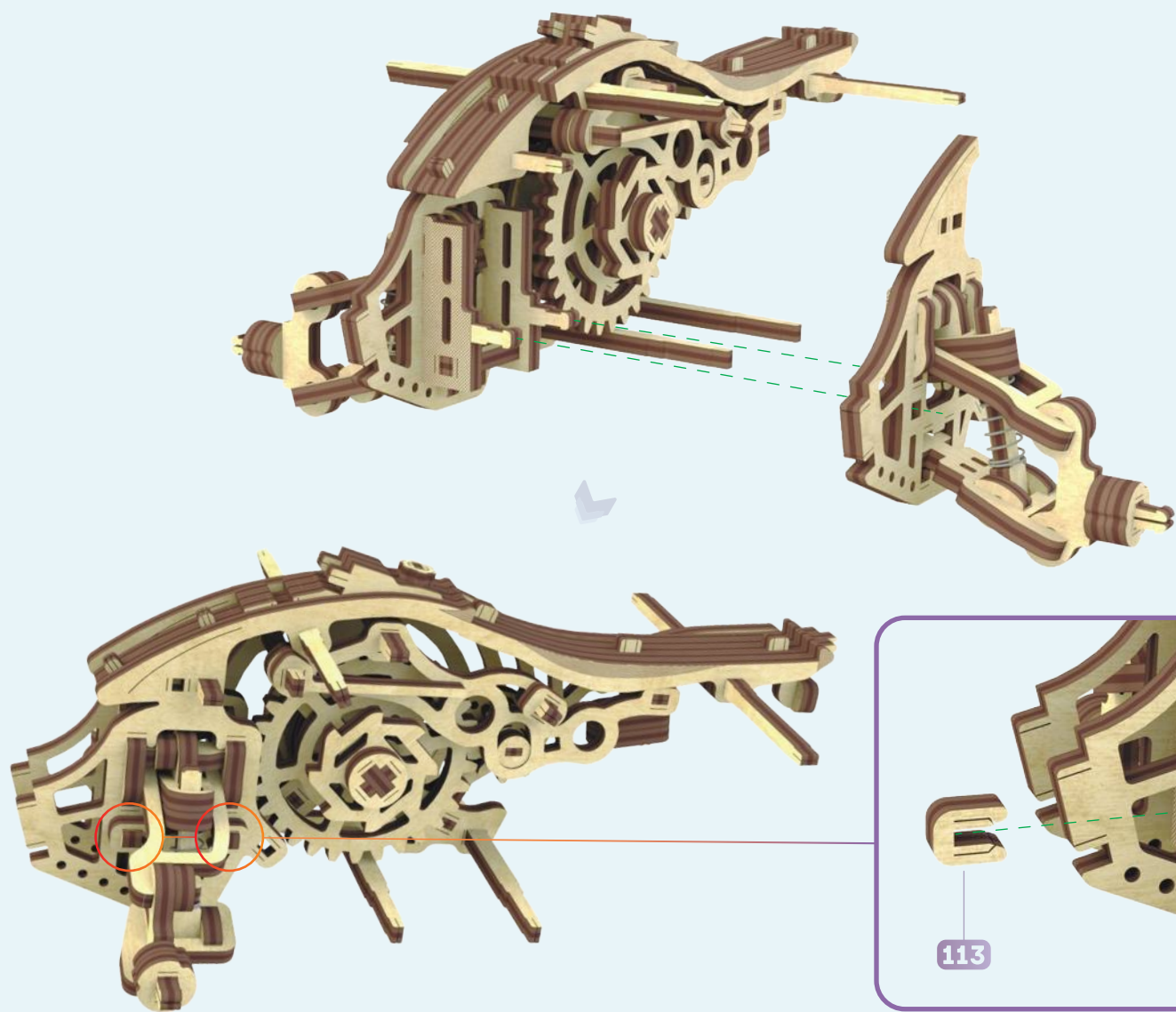
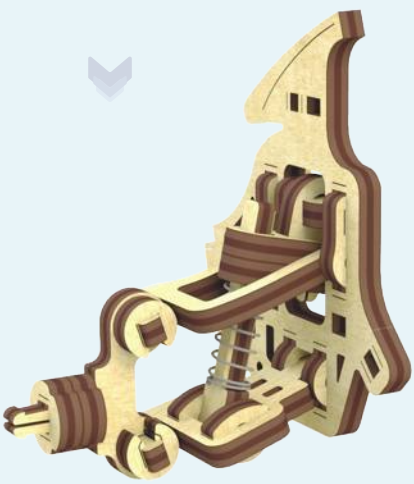
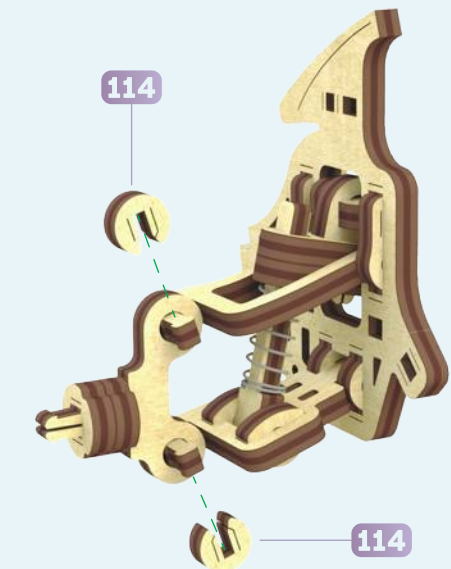
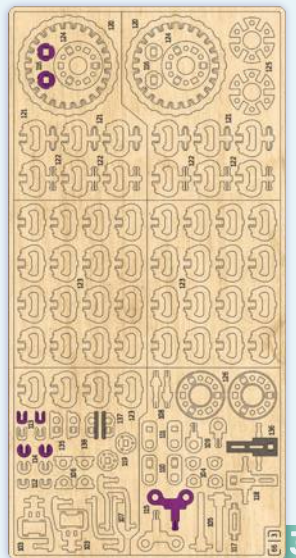


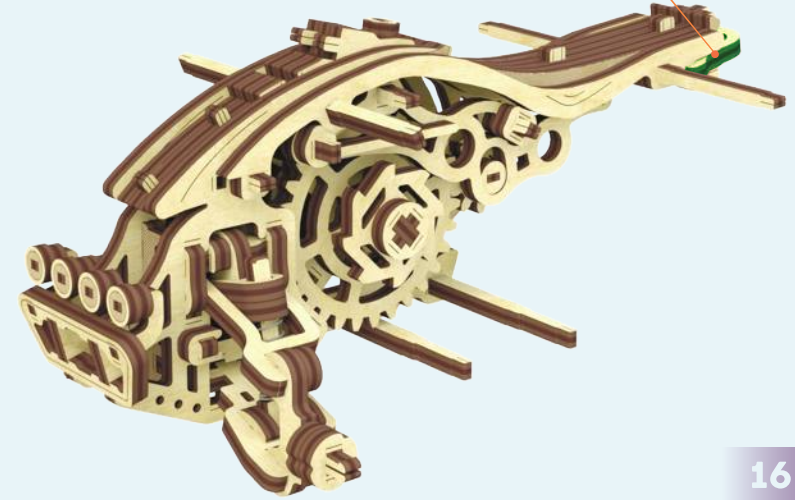
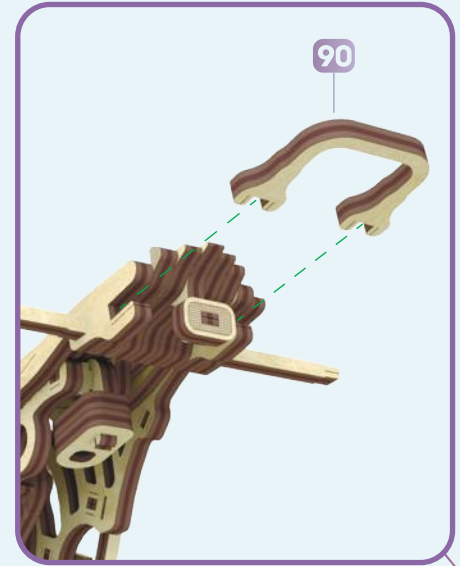
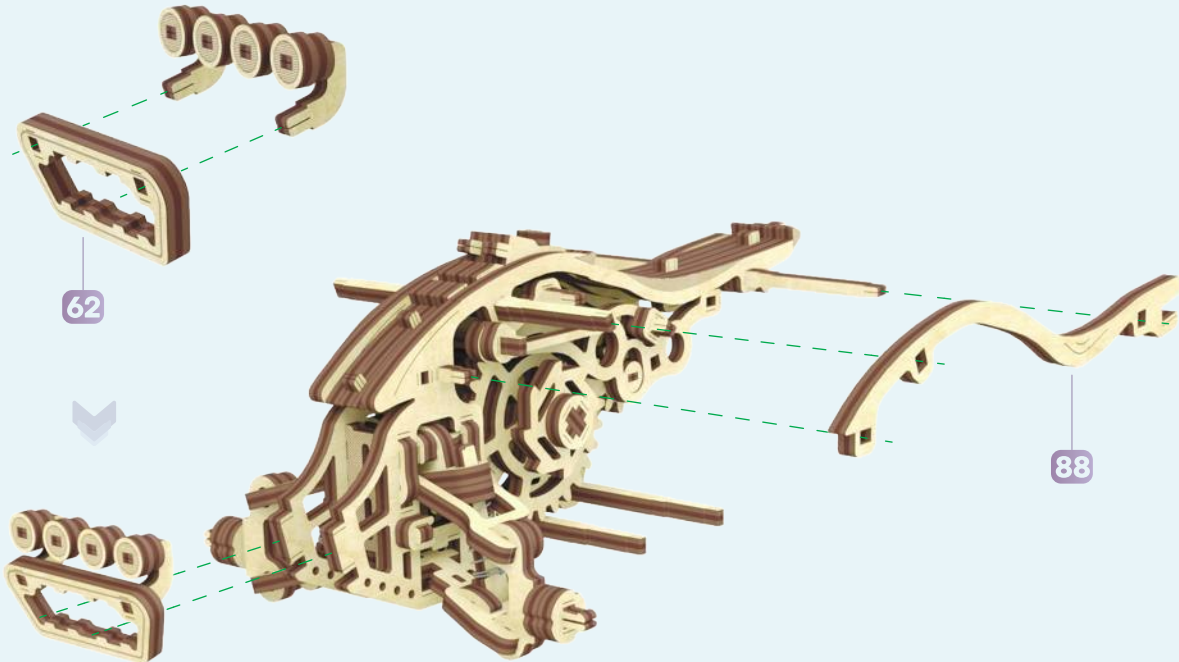
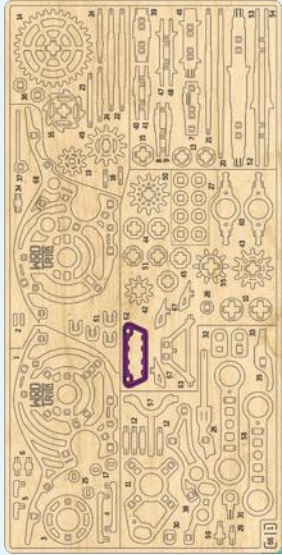
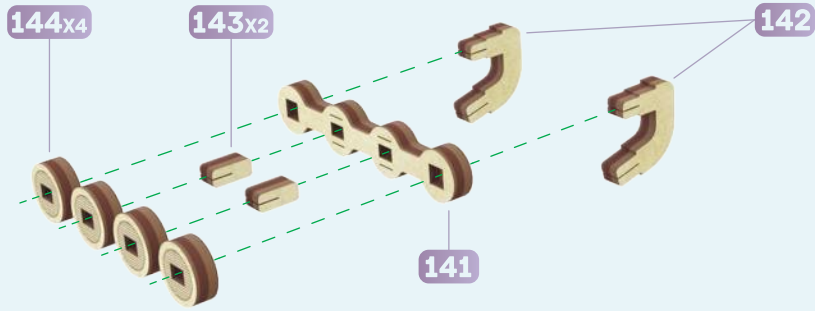
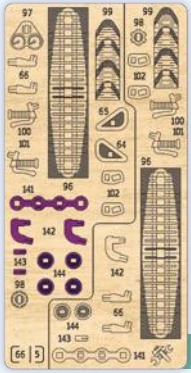
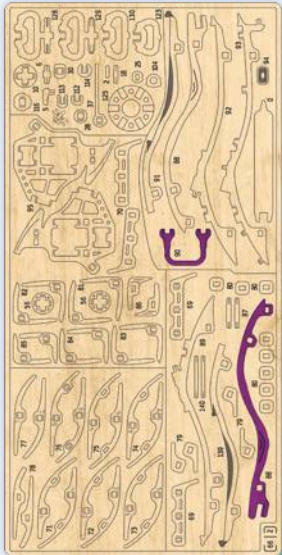
1

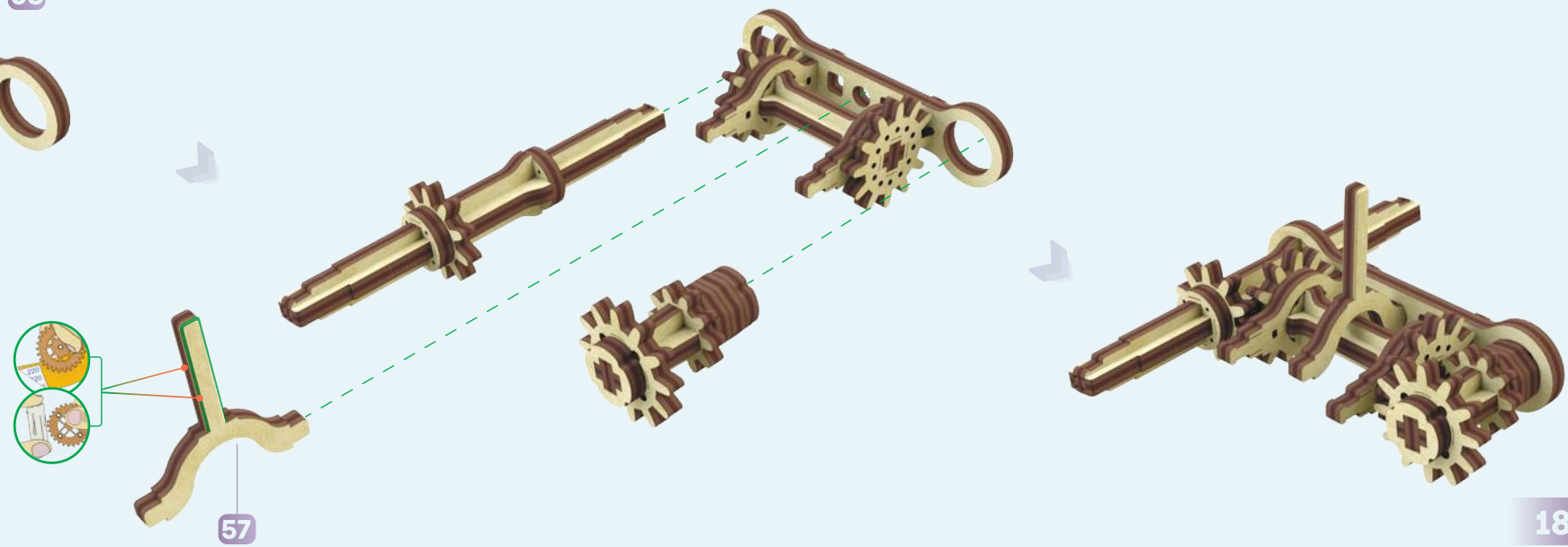
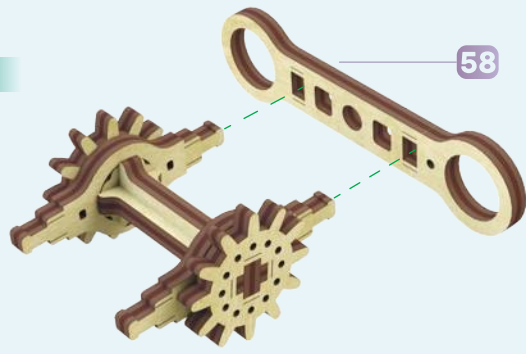
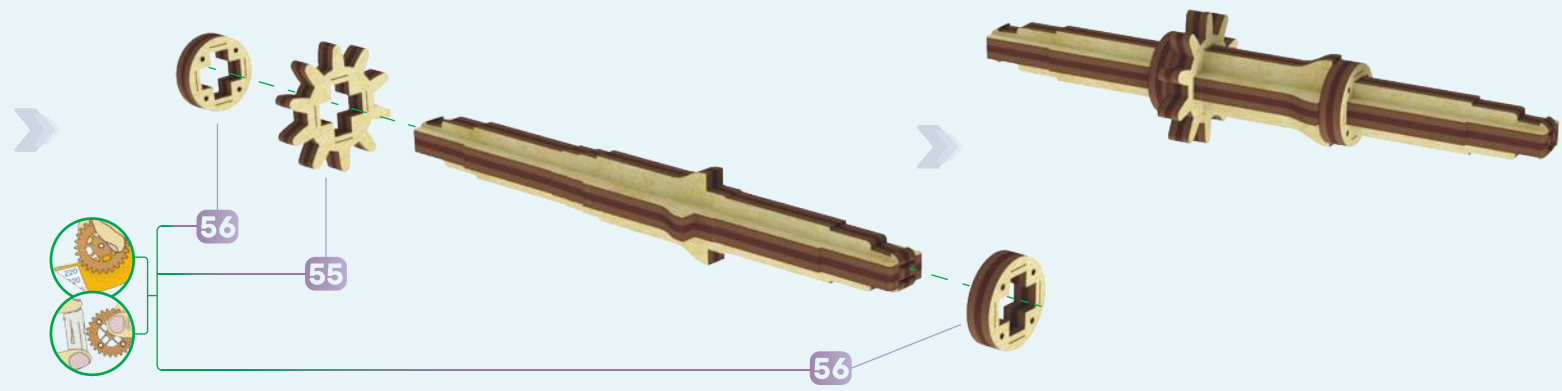
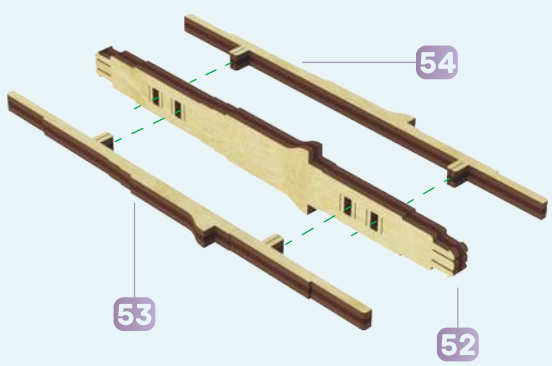
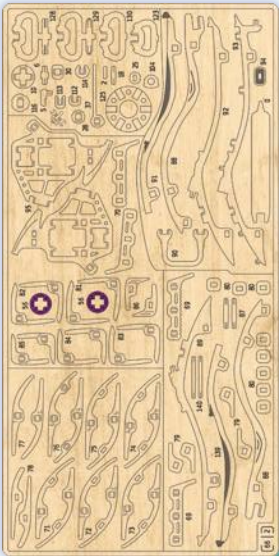


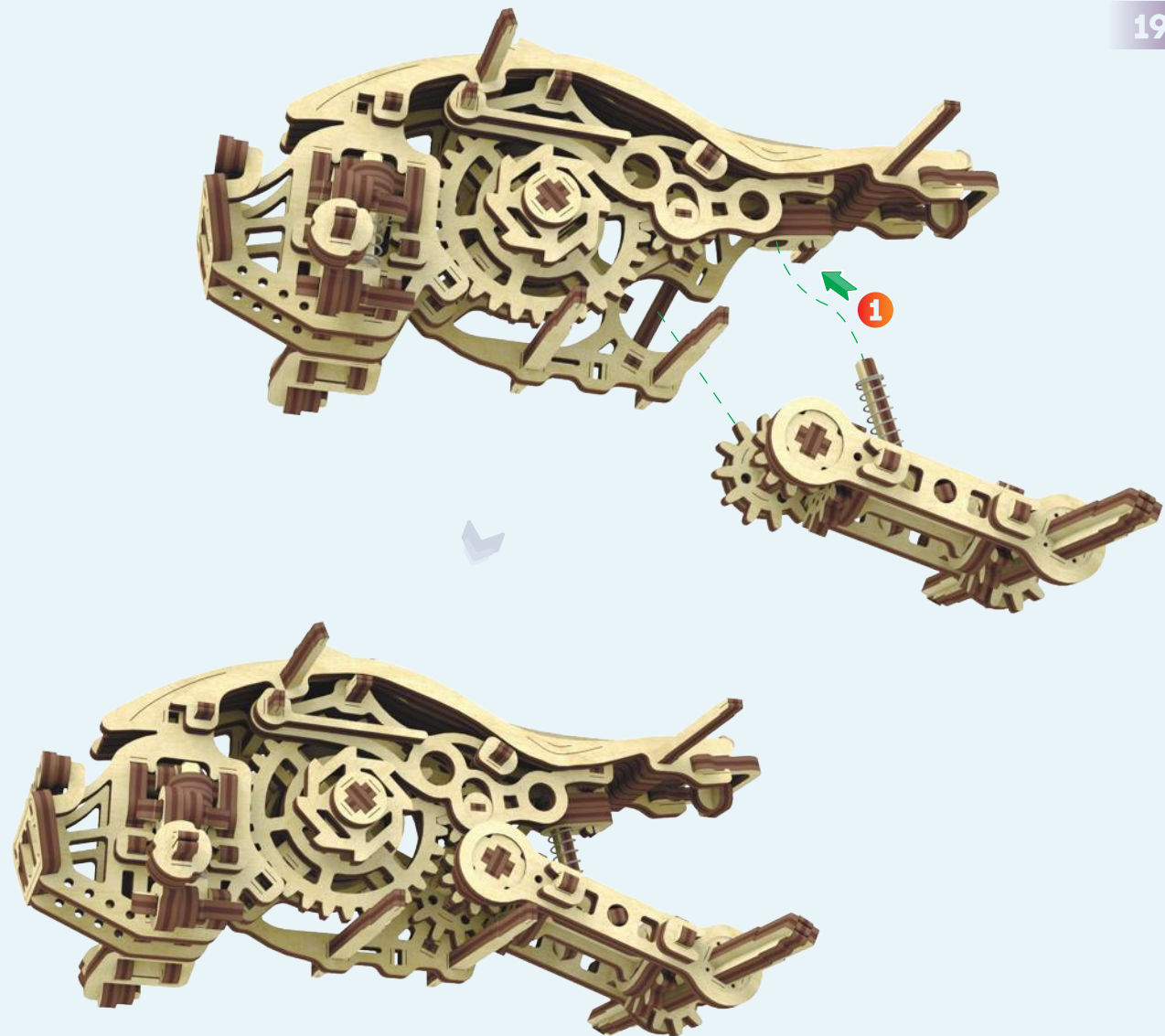
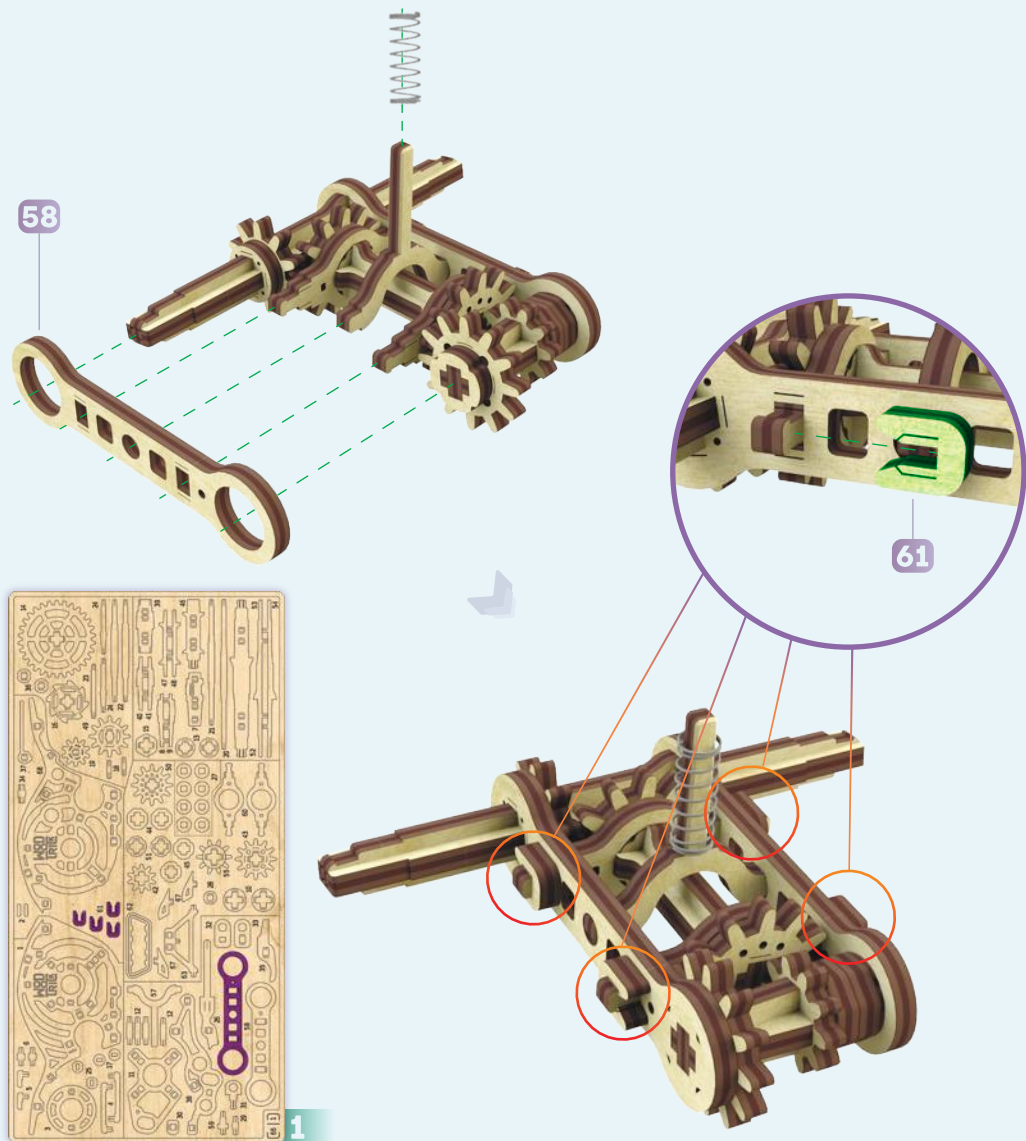


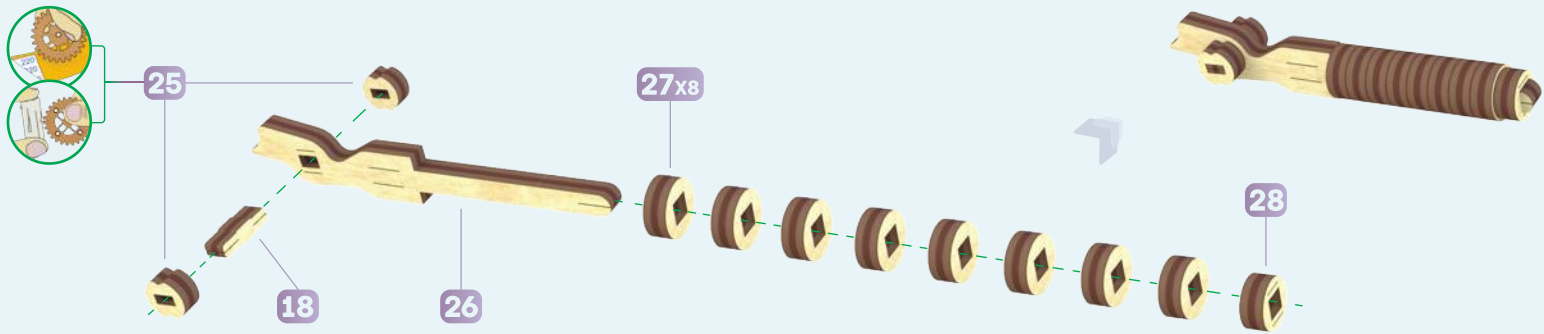




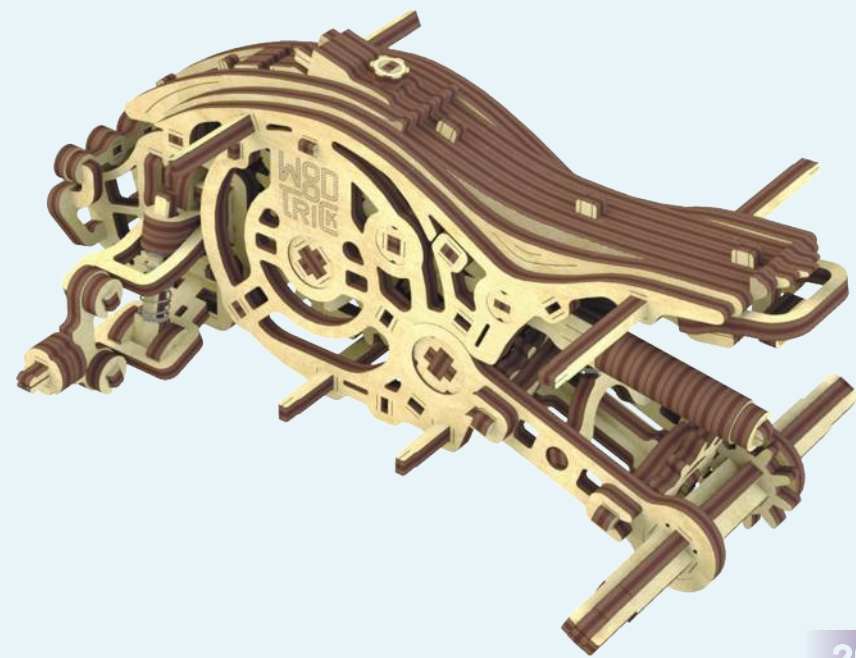
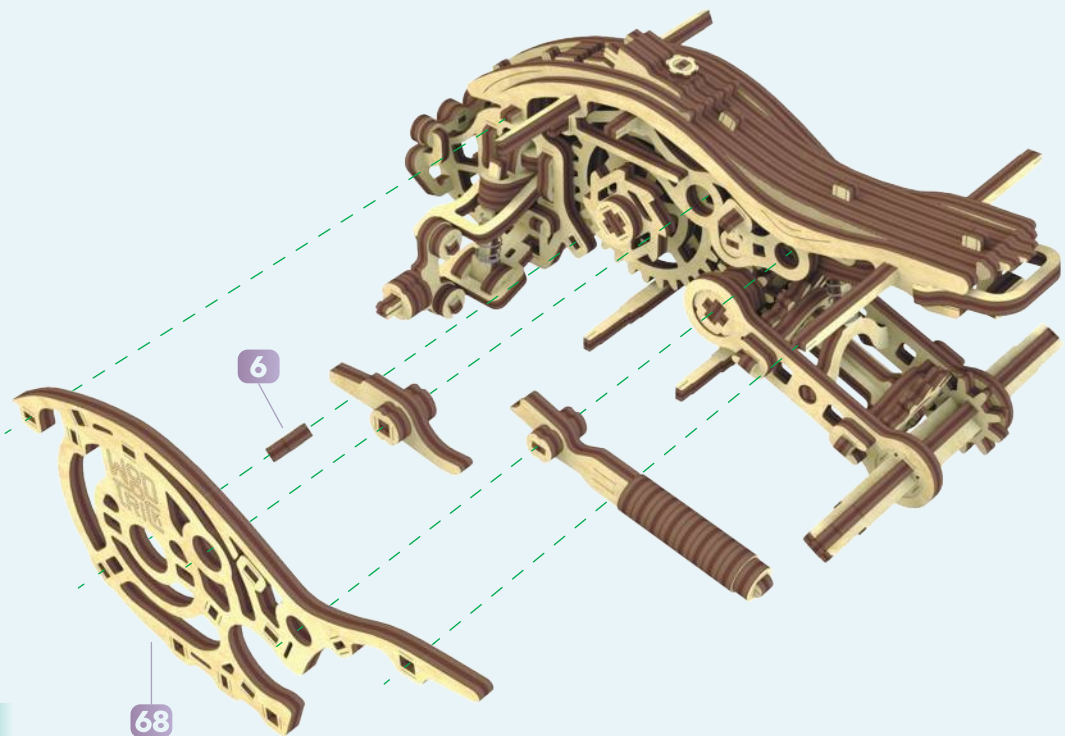




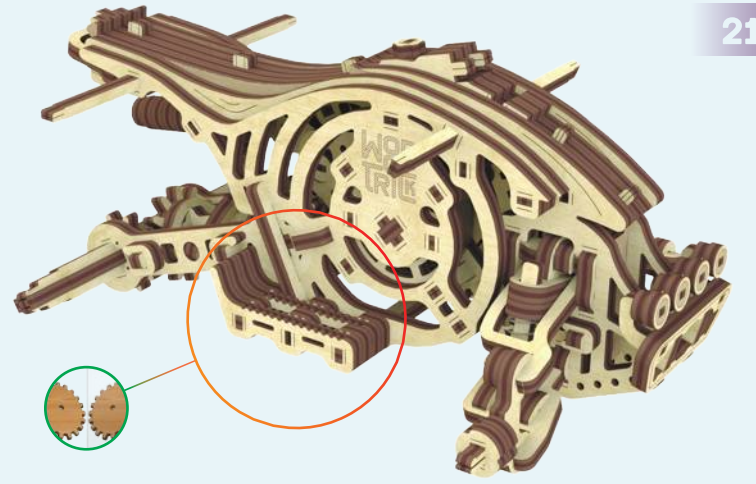
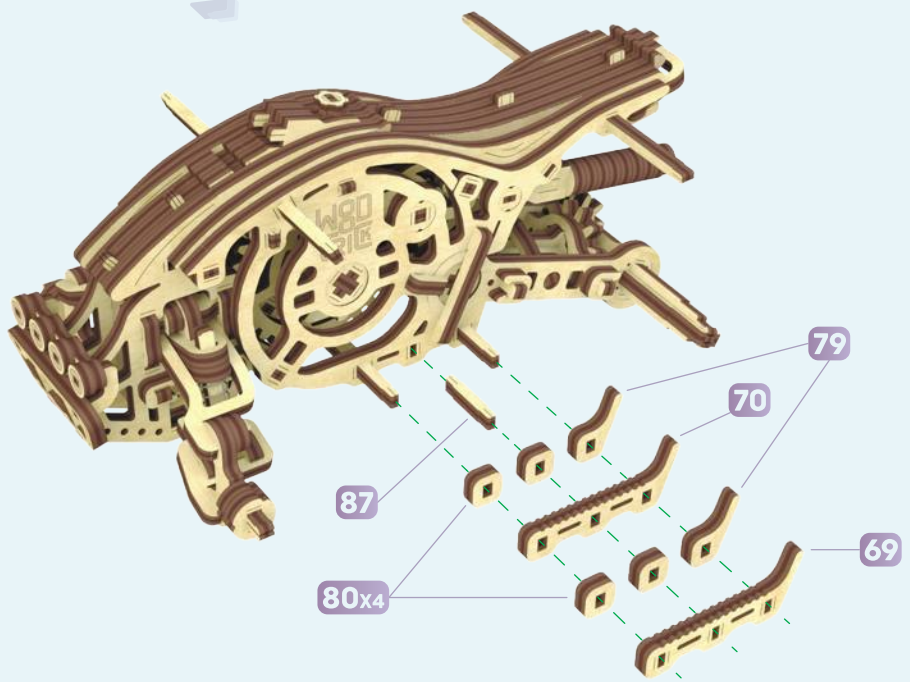
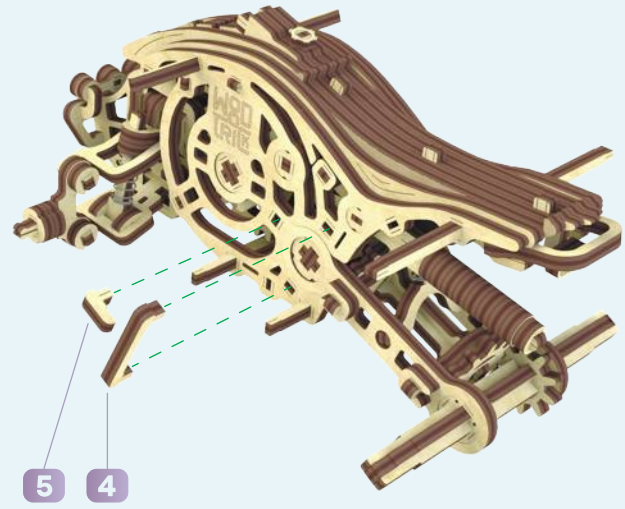
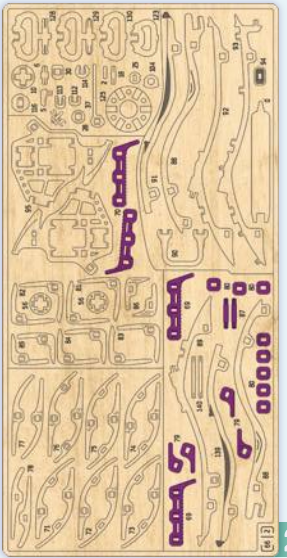


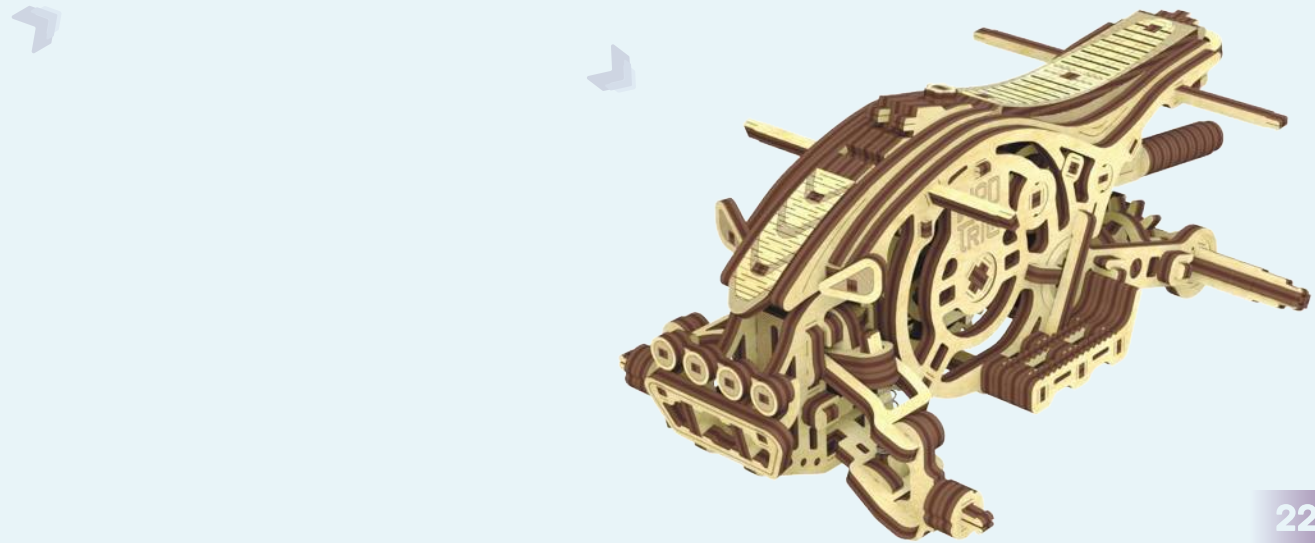
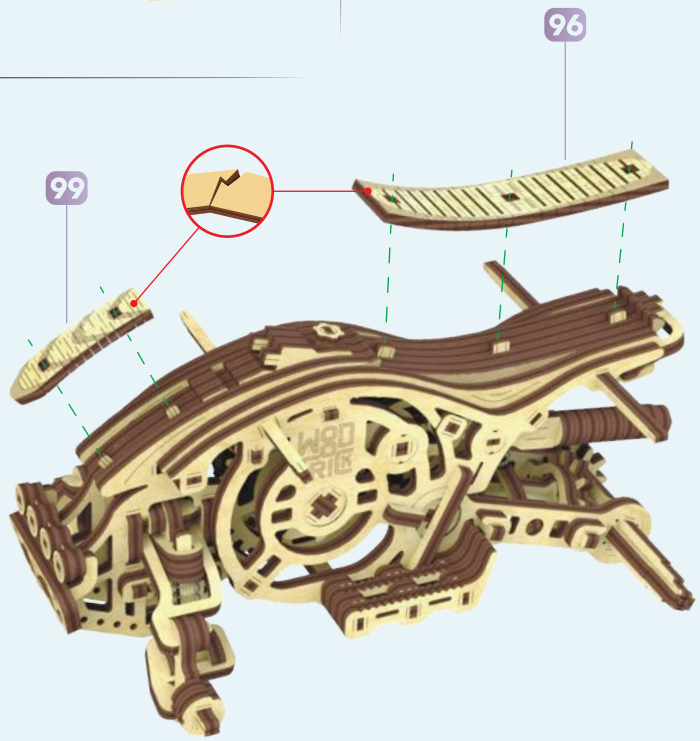
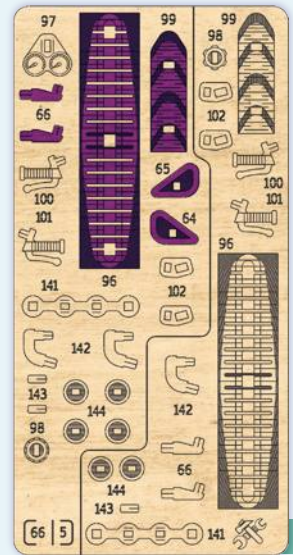
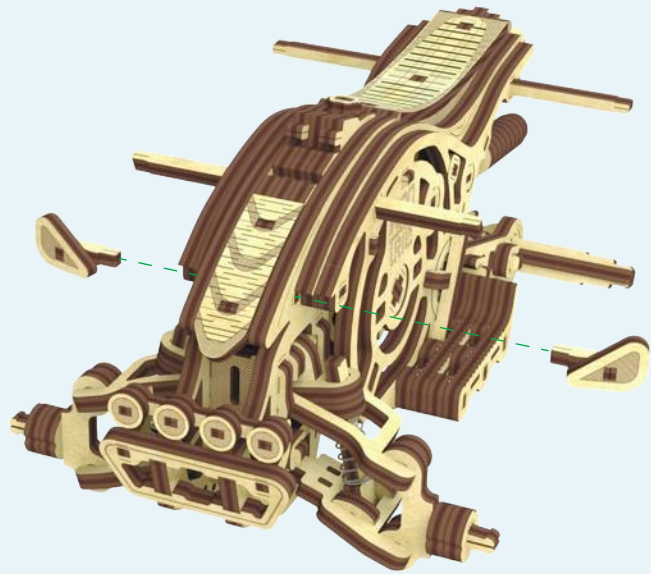
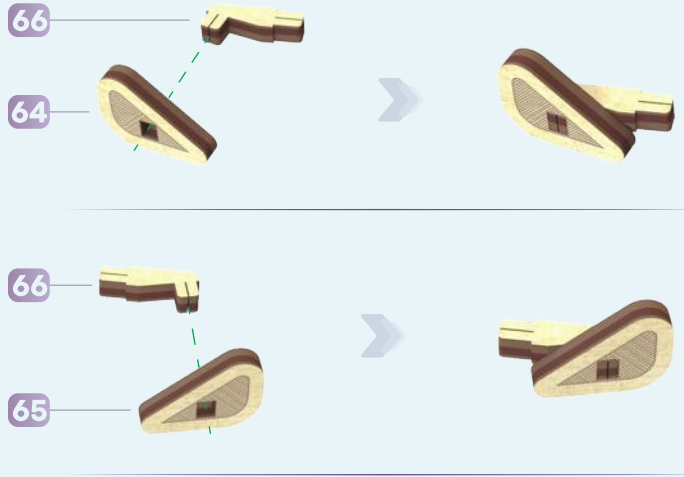


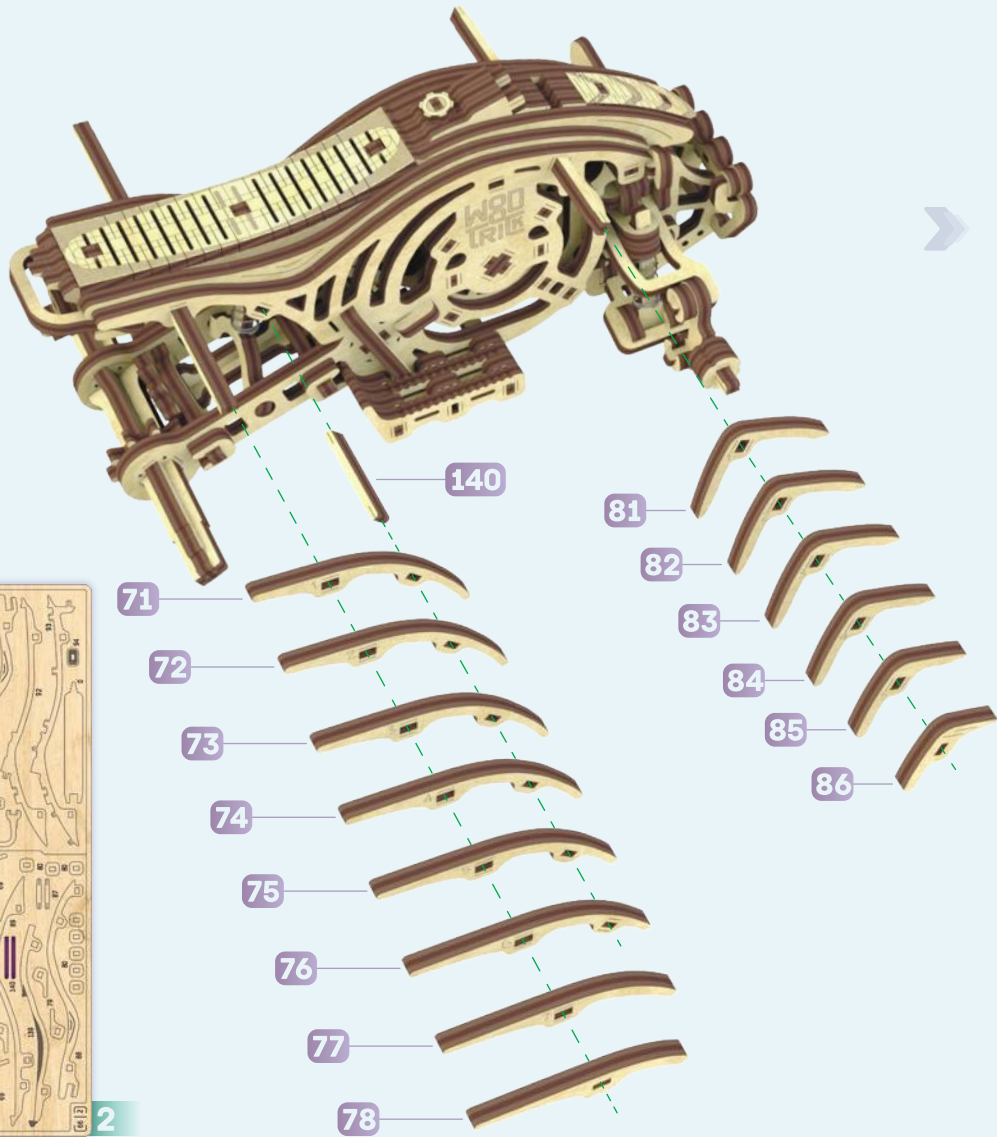
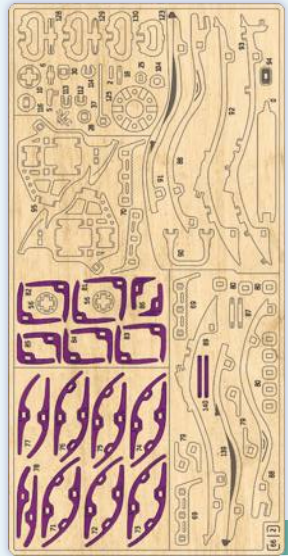
1

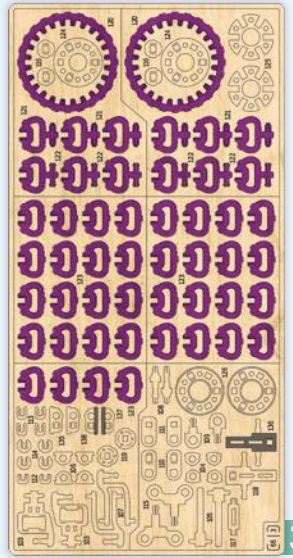
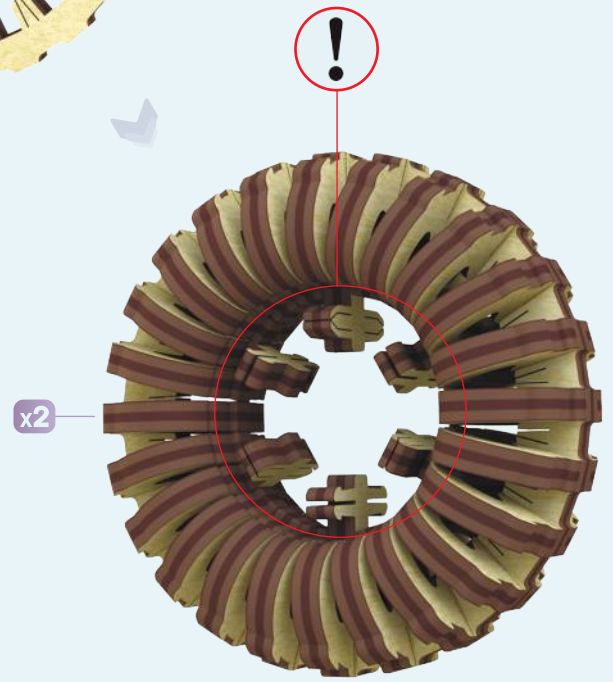
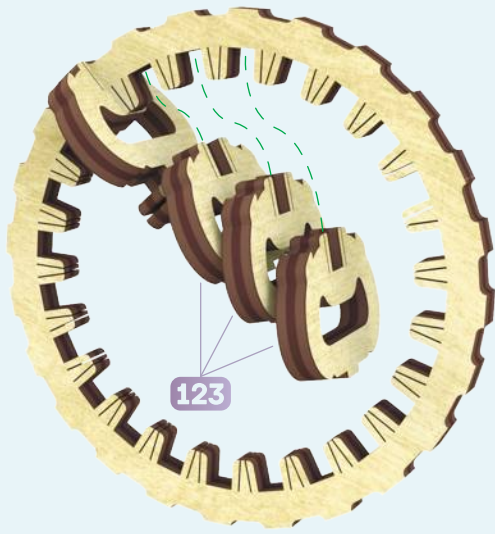
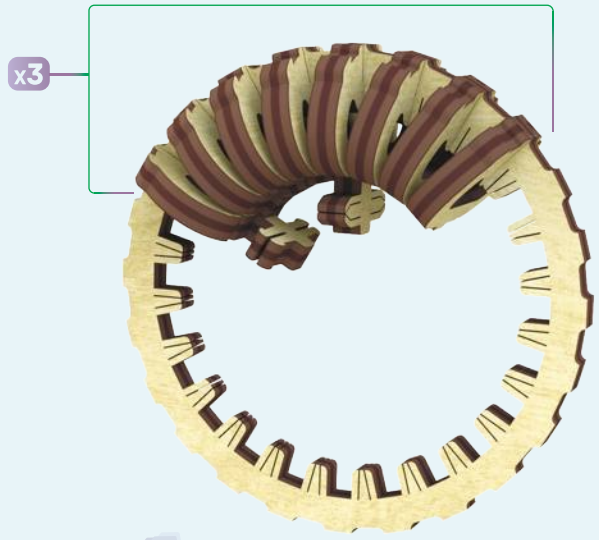
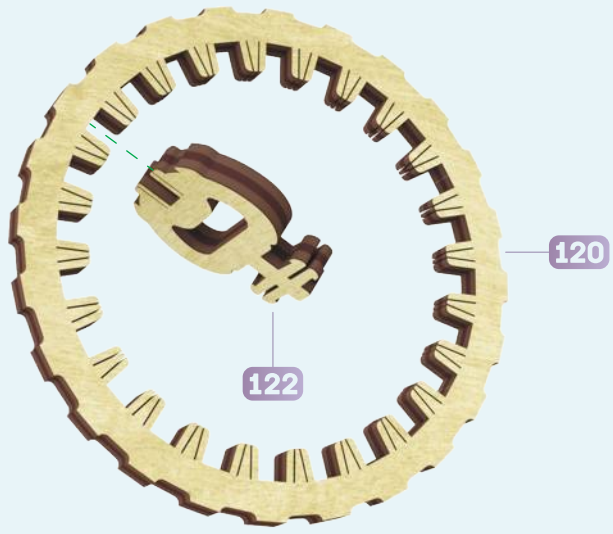


20

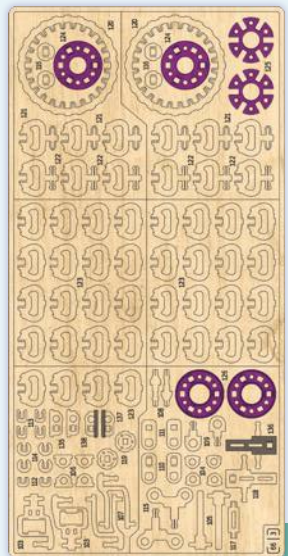
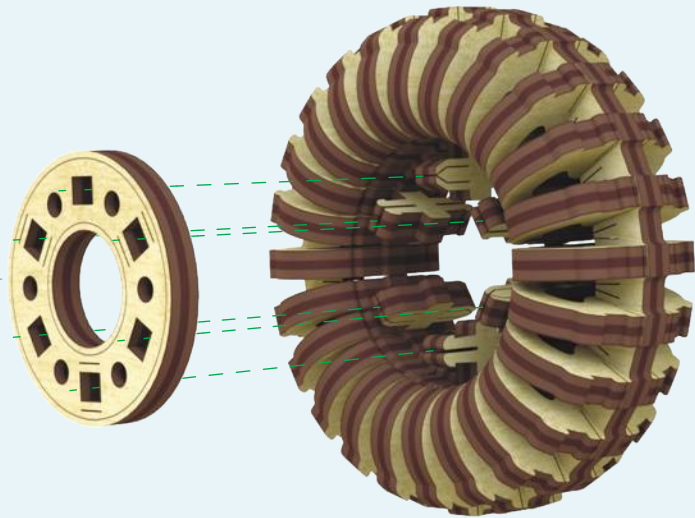




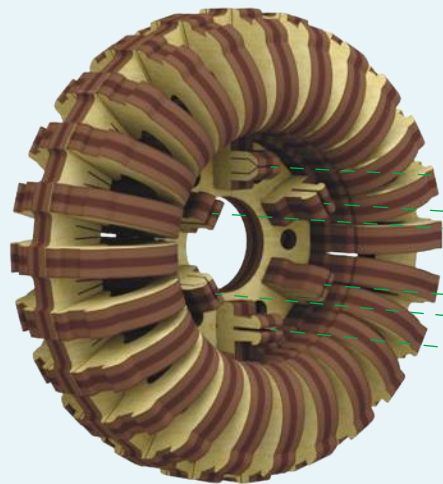




126



3



125



124



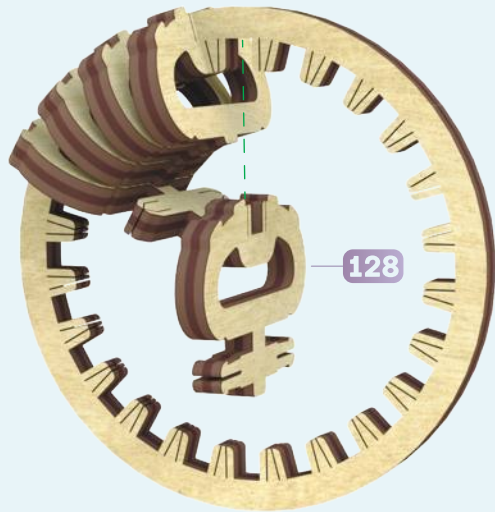
x2





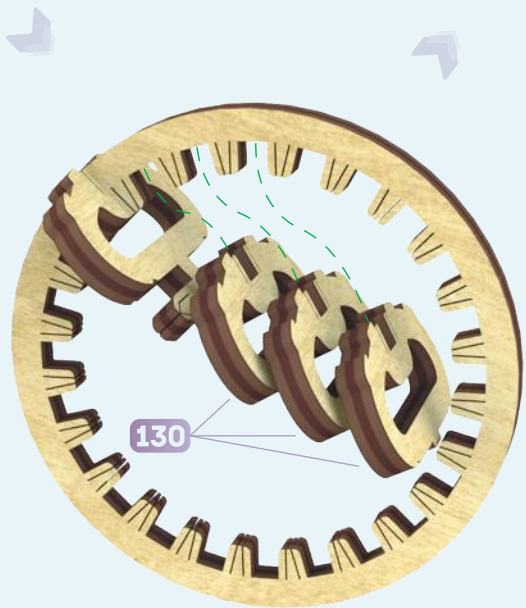
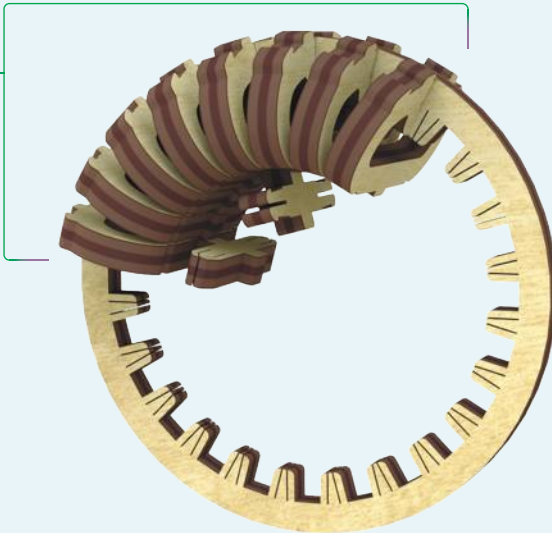
127

129

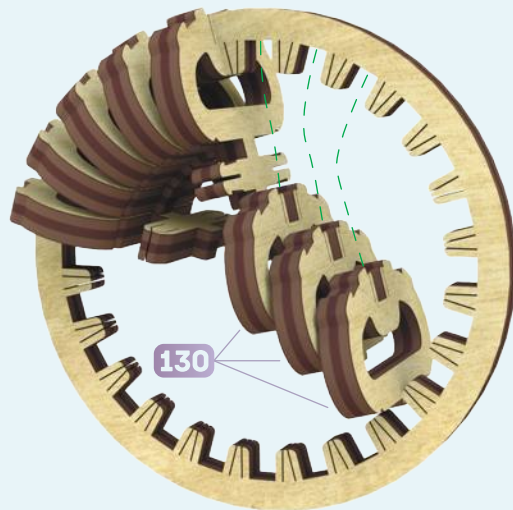


128

x3

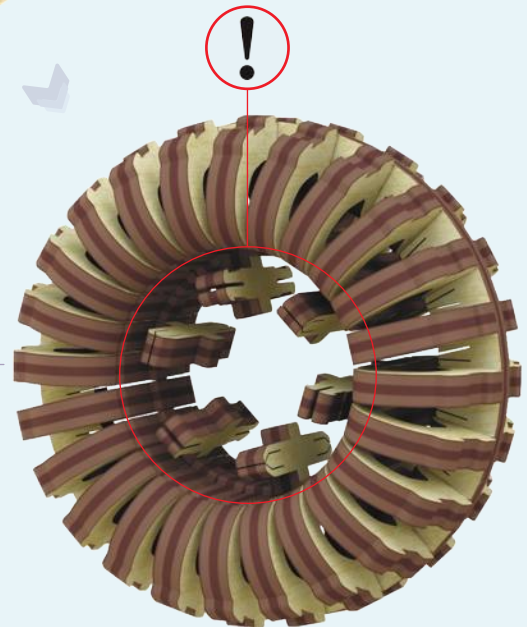


130

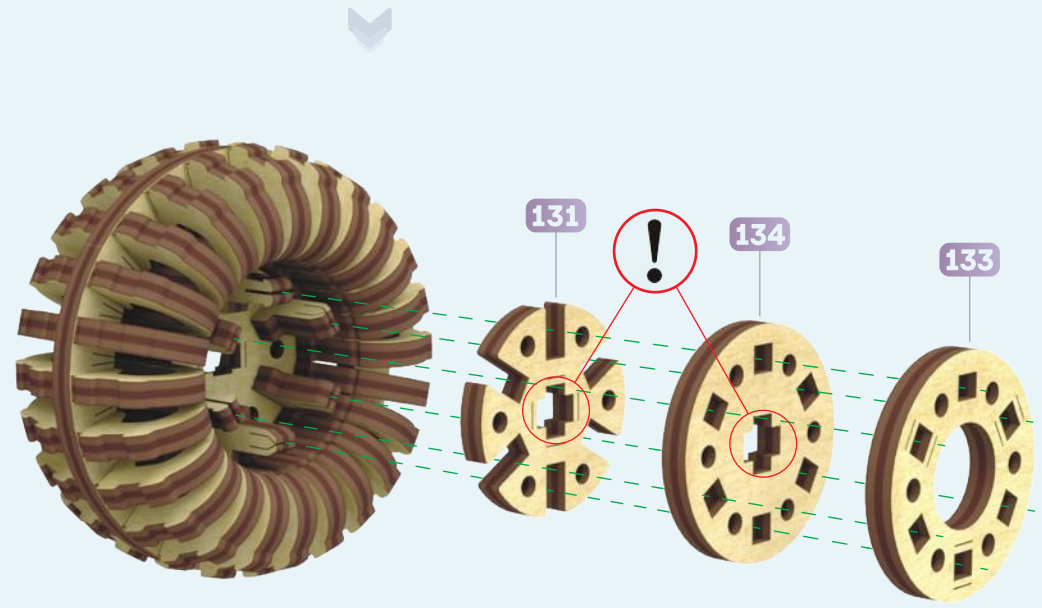
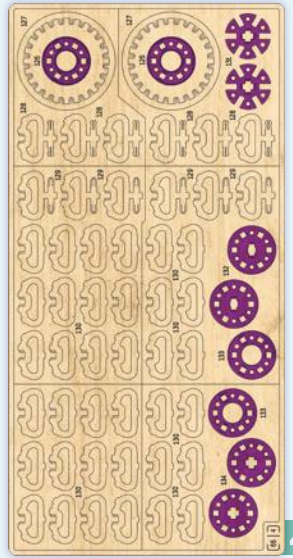
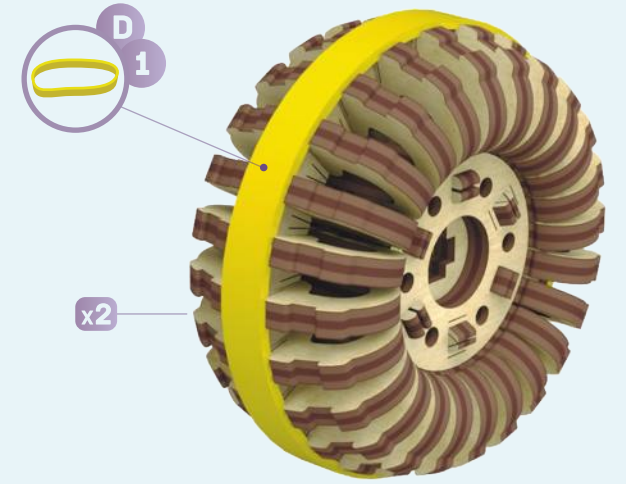
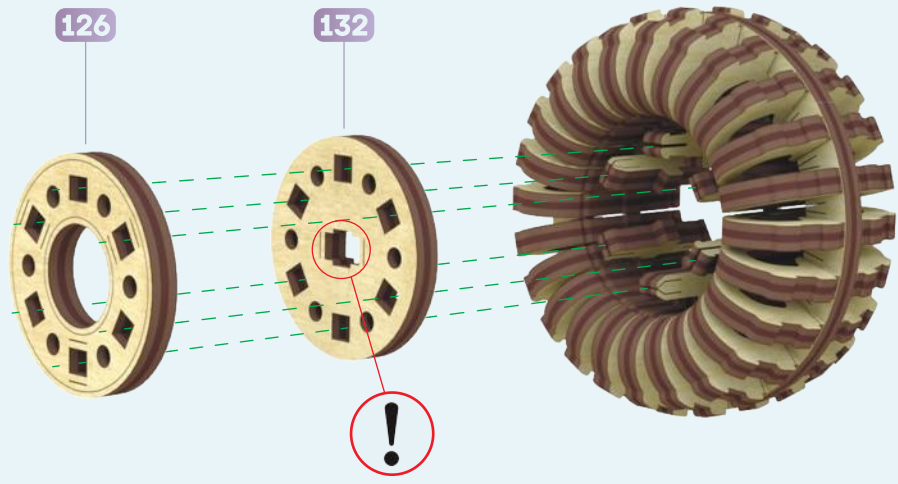


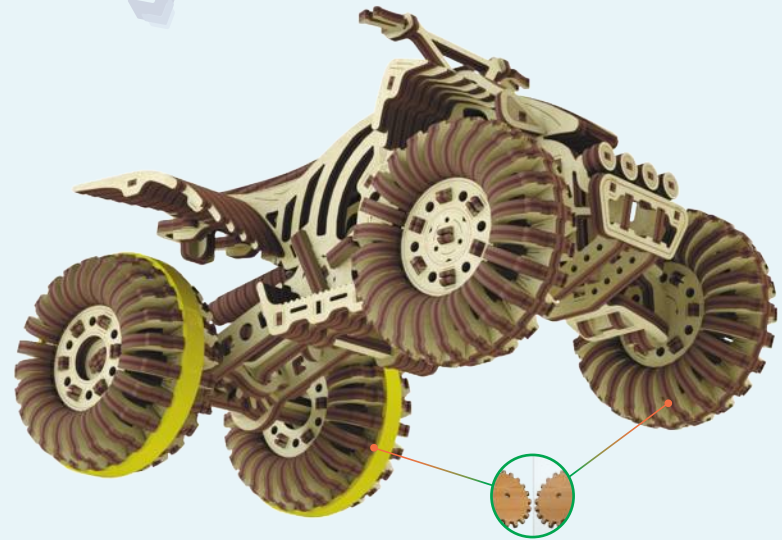
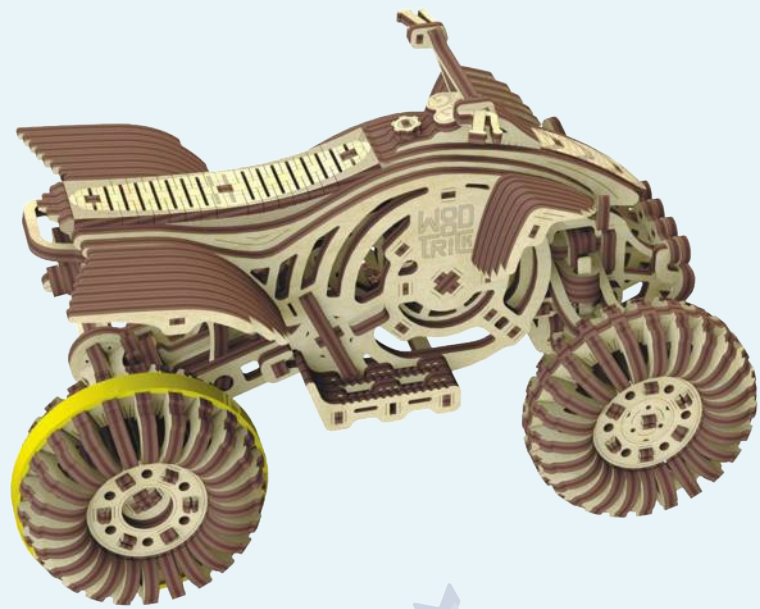
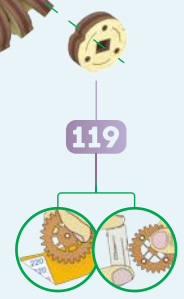
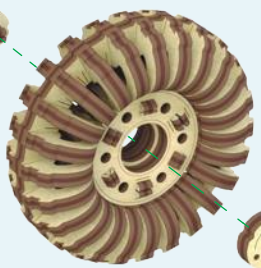
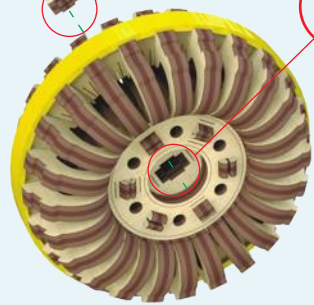
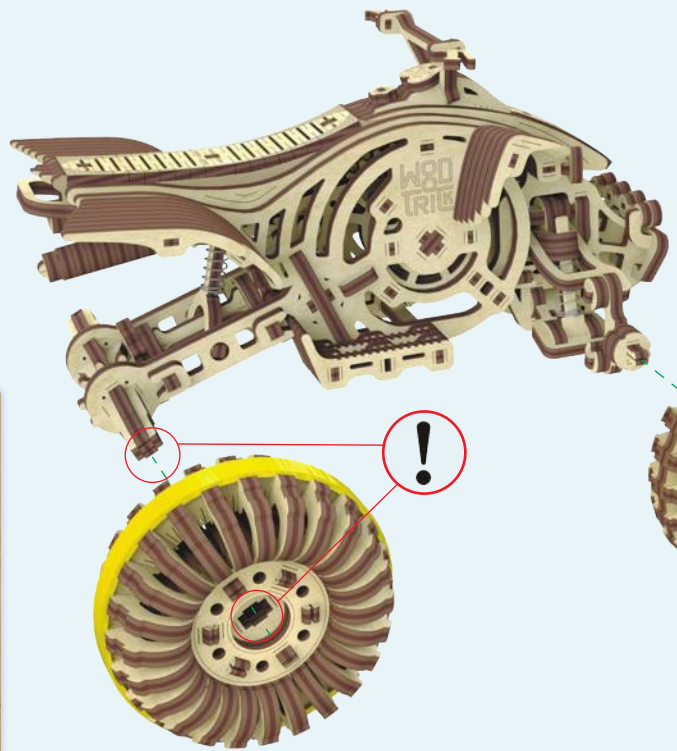
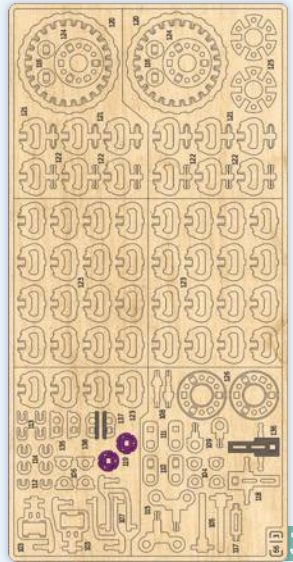
130

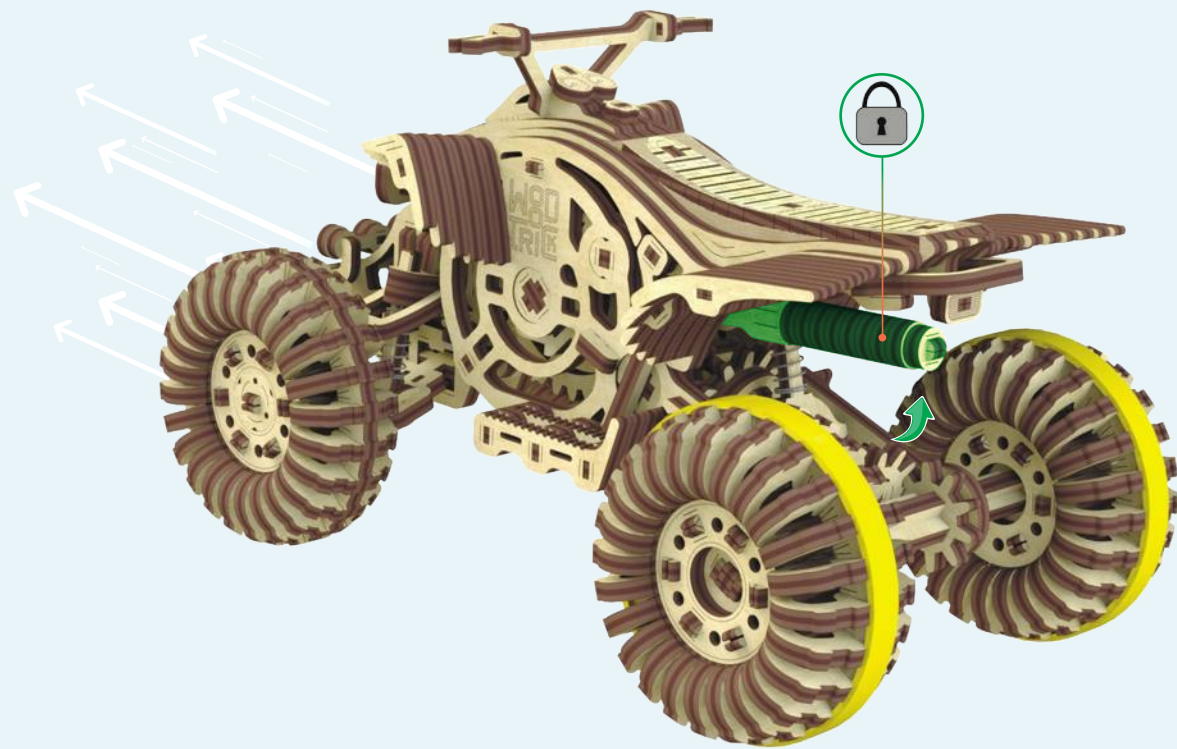
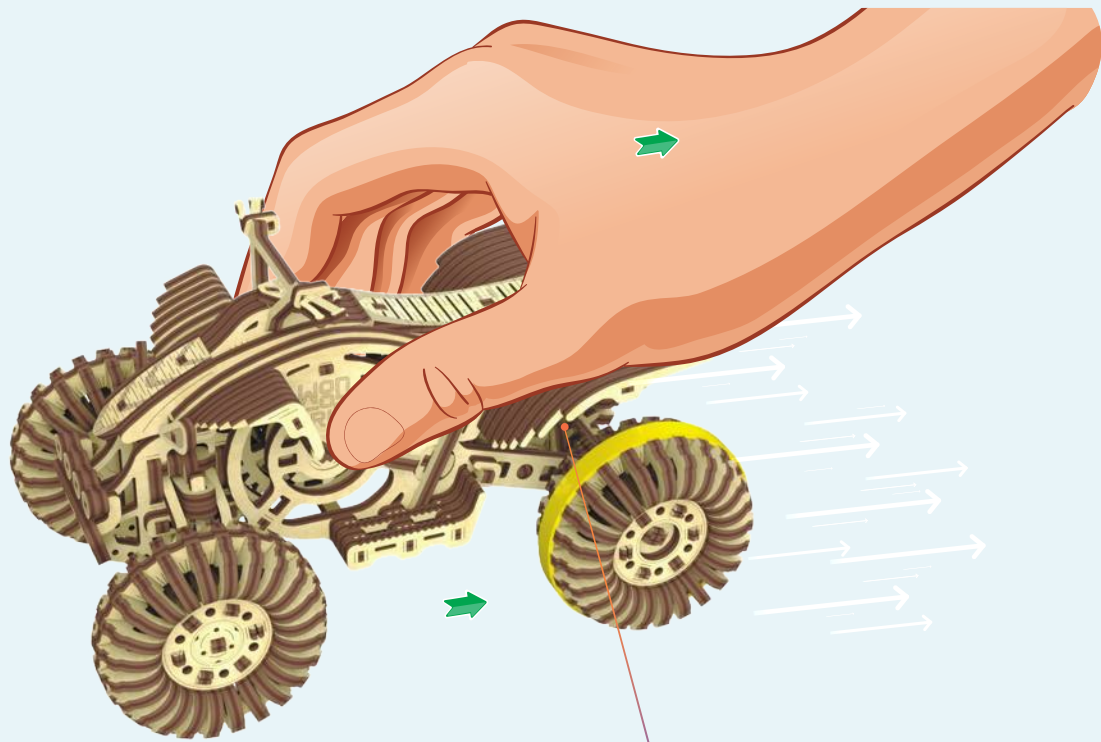
x2



4







TO THE MOUNTAINS!

Imagine extreme off-roading. All around you see pleasant views and a plethora of forest life. Riding a quad bike with friends is a great way to chill, experience new places, and have a fun time together. We decided to create our updated and improved Raptor Quad Bike model so that you can be mentally transported to such rides whenever you want. After all, there's nothing like taking a break in the middle of the workday and dreaming of a time when you were carefree, relaxed, and having fun!



HIGH CROSS-COUNTRY MOBILITY

Because of its big wheels, lightweight body, and high engine power, the quad bike has a high level of cross-country ability. You can quickly drive up a mountain, conquer a dune, or drive over a rough road.

SAFETY RULES

When riding off-road quad bikes, it is important to observe safety precautions. Given the problematic routes and dangerous maneuvers you have to do, it is important not to forget to wear a helmet, protection for the knees and elbows, and a special vest. These items can protect you from bruises and fractures.

Follow us on
[YouTube /woodtrick](#)
[Instagram @woodtrick](#)
[www.woodtrick.com](#)

DIFFERENT KINDS

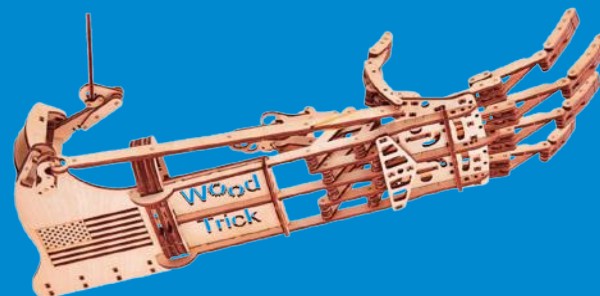
It is interesting that the quad bike that most often comes to mind is actually just one of the types of such vehicles. Any vehicle on four wheels can be called a quadricycle. The name itself comes from the Latin "quadro," meaning four.

WOOD TRICK

CHECK OUT OTHER SERIES



SPECIAL FORCES SERIES



MECHANISMS SERIES



ELECTRIC SERIES



VINTAGE MACHINERY SERIES