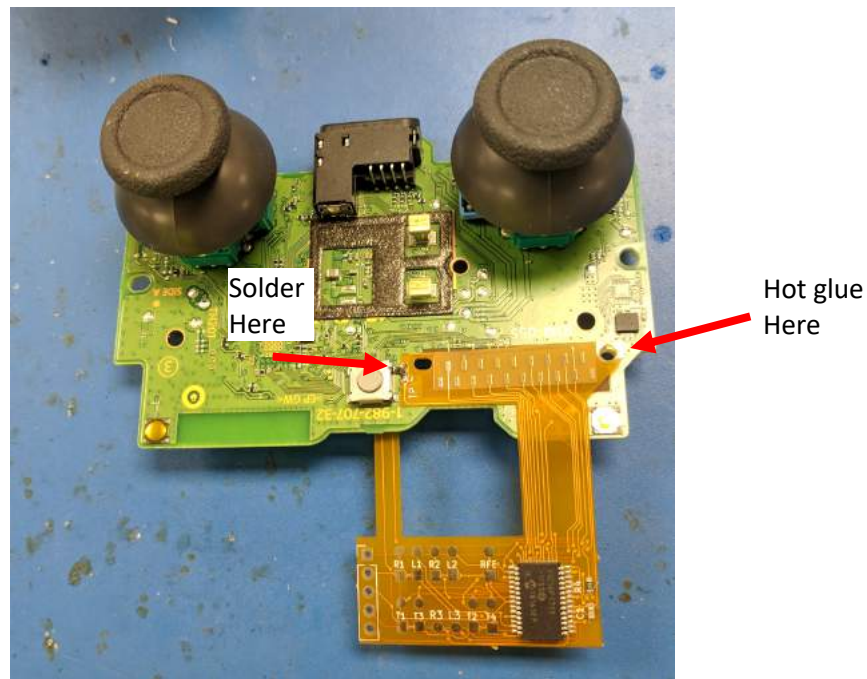


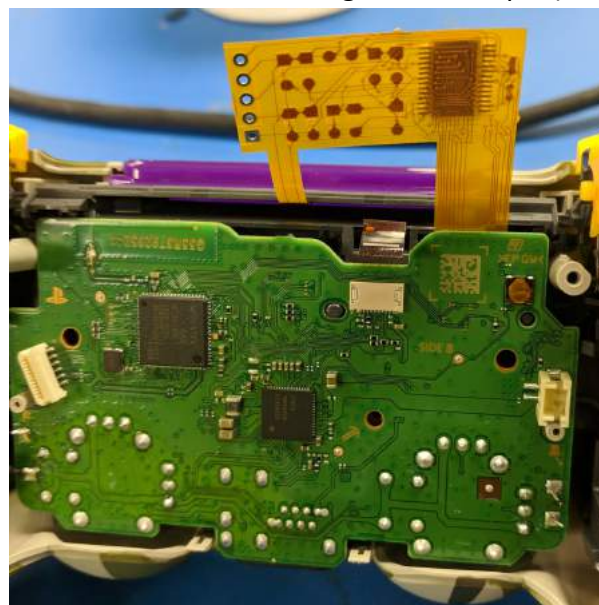
PlayStation 4 ver. JDM-040, JDM-050 and JDM-055

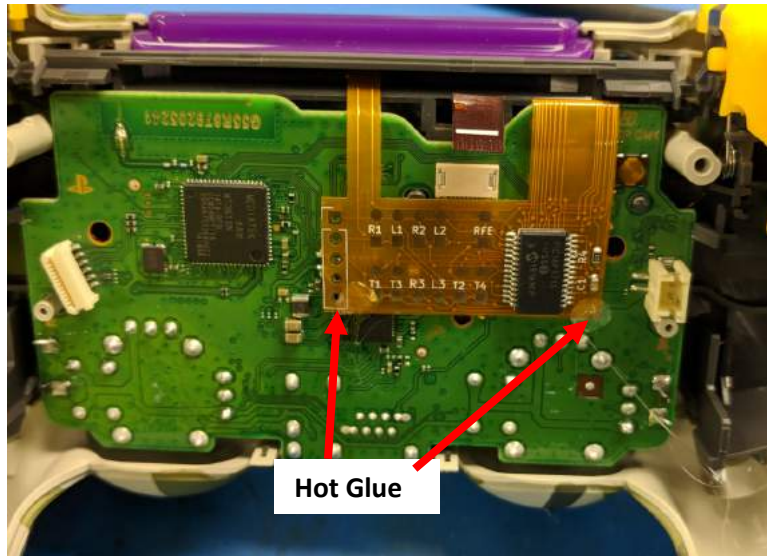
Remap Chip Install

1. Line up the holes with the ones on the controller.
2. Solder the pad marked "TP" to the trackpad button's leg. Use hot glue to hold down the right corner.



3. Carefully put the controller PCB back in place making sure all the holes are still lining up.
4. Fold the remap board flex board down. Make sure the LED goes into the slot as shown below (this is so the LED is visible through the touchpad).





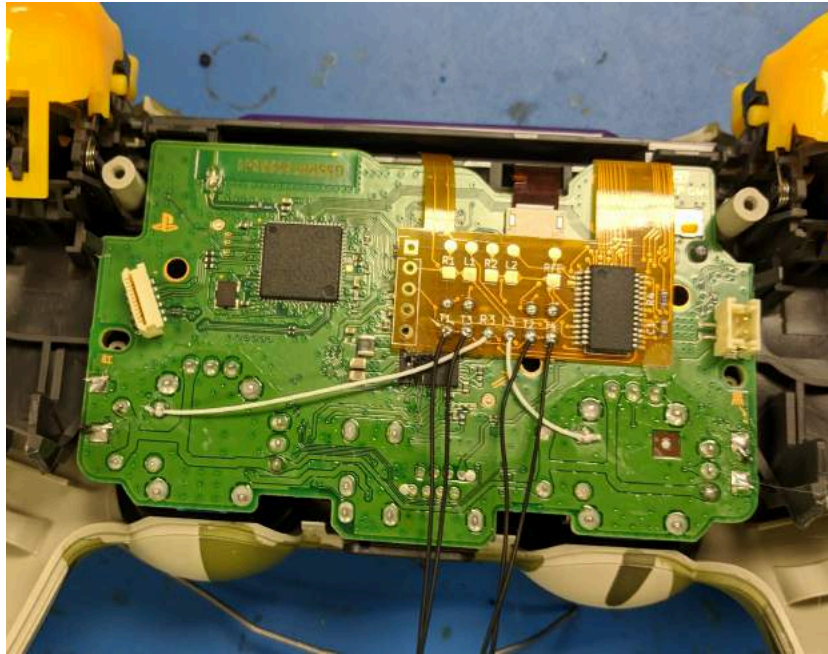
5. Tin contacts on board with solder. Do not use too much heat and do not apply soldering iron for too long. Doing so can cause to the remap board and contacts can come off.



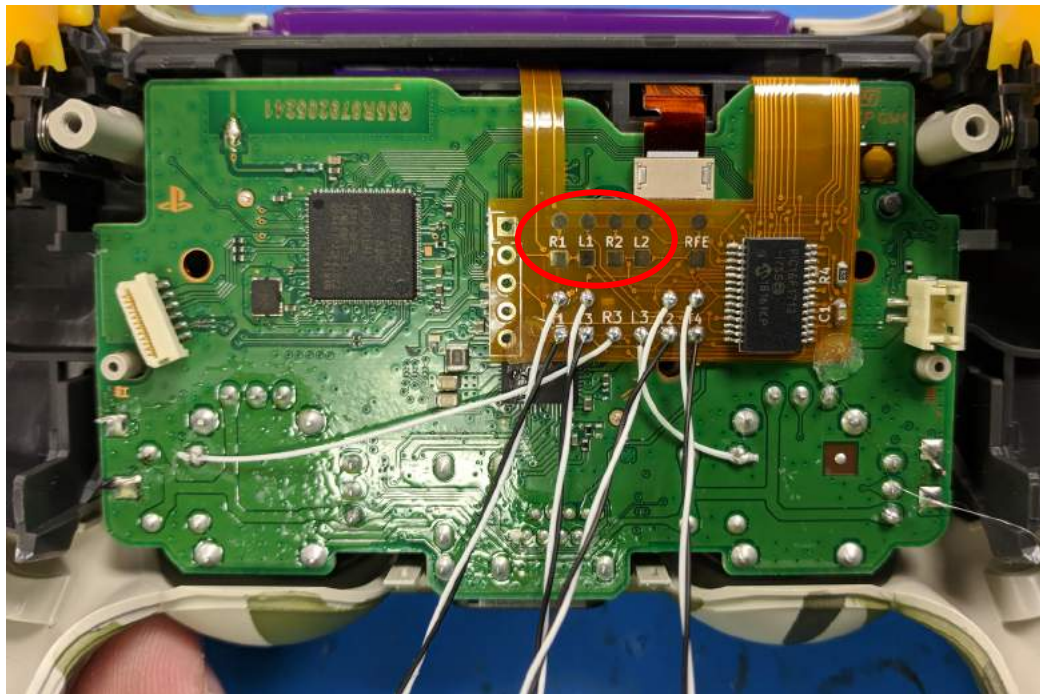
6. Solder the pads labeled L3 and R3 to the following points.



7. Solder ground wires.



8. Solder remaining connections to buttons.



9. Mount and solder switches. The solder connections should be side by side to each other. The picture below shows the upper left switch soldered.



Optional: If you would like to hard wire R1, R2, L1 and L2 separately you can do so with the connections circled above with their corresponding grounds. The RFE connection is for Rapid Fire Enable. Sony has disabled this feature on most controllers but you can try to enable rapid fire by connecting the 2 RFE connections to an additional switch.