



Laser Level (3D 12 Line/4D 16 Line)



Thank you for purchasing this product. To ensure proper use and trouble-free operation, please read this guide carefully before operating. If there is any issue, please contact us via Amazon or email: hardell.service@gmail.com, we will help you within 12 hours.



PRODUCT DESCRIPTIONS



Components

- ① Horizontal Line Window
- ② Control Panel
- ③ Horizontal Bubble
- ④ Lithium Battery Pack
- ⑤ Vertical Line Window
- ⑥ Power Switch
- ⑦ Horizontal Line Window



Control Panel



Switch Indication

SPECIFICATION

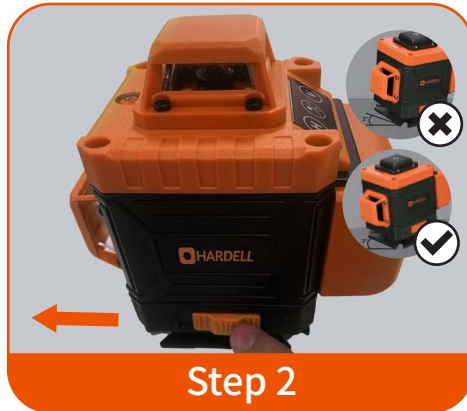
Mode:	LLX-360-01
Scope of work:	65ft
Automatic leveling range:	$\pm 3^\circ$
Laser wavelength:	515nm(Green Light)
Laser grade:	Class II (IEC 60825-1)
Accuracy:	1mm at 7m/1/25"at16.5ft
Power supply:	2-cell battery pack(2400mAh)*2
Working temperature:	- 0°C~ 40°C
Working hours:	Single 2-cell battery pack(≈ 3 hours)

HOW TO USE



Step 1

Place the Laser level on the ground and load the battery. (If you need to install the base, please refer to base installation)



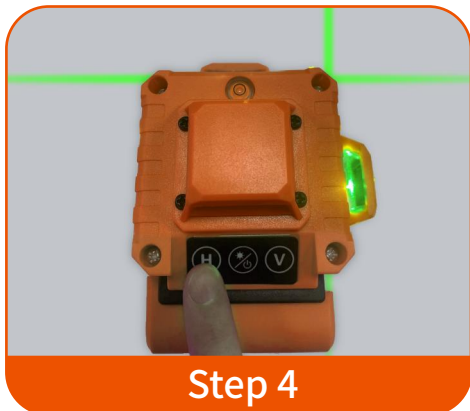
Step 2

Turn on the switch, and when you hear a beep, the machine starts normally; if the machine alarms, it means that the inclination of the machine exceeds 3°, adjust the inclination of the machine until it does not alarm again



Step 3

Short press the V key to control the number of vertical lines (up to 8), or you can long press the V key to reduce the brightness of the light.



Step 4

Short press the H key to control the number of horizontal lines (up to 8), or you can long press the H key to increase the brightness of the light.



Step 5

Press and hold the S/D Key to switch to the tilt mode, and you can place the laser level at any angle you want, or short press to switch indoor/outdoor mode.



Step 6

When finished using, turn off the switch; remove the battery and put the device back into the Oxford bag.

KEY PANEL OPERATION

-  H key: horizontal line switch (Short press this button to change the number of horizontal lines, up to 8 Line; Long press this button to increase the light of line.)
-  V key: vertical line Short press (Press this button to change the number of vertical lines, up to 8 Line; Long press this button to decrease the light of line)
-  S/D Key: Outdoor/indoor toggle key by short pressing S/D Key. Start the slope mode by pressing S/D Key 5 seconds

USE OF ACCESSORIES

We provide 3 kinds of brackets, you can adjust the position of the machine by turning different knobs after connecting the bracket and the machine. In addition, the rotating base can also be linked with a tripod through the bottom thread.

BRACKET INSTALLATION



Step1: Fix iron plate(①) to the wall with screws.

Step2: Connect the laser level to the upper wall bracket with 1/4" thread(②), then attach bracket base to the plate directly by magnetic.

knob A: It controls the radian of the device tilting up and down by controlling the bracket. It is used under a tilted state, such as stairs.

knob B: It controls the radian of the device to rotate left or right.

knob C: It controls whether it slides forward or backward (the device is closed or away from the wall)



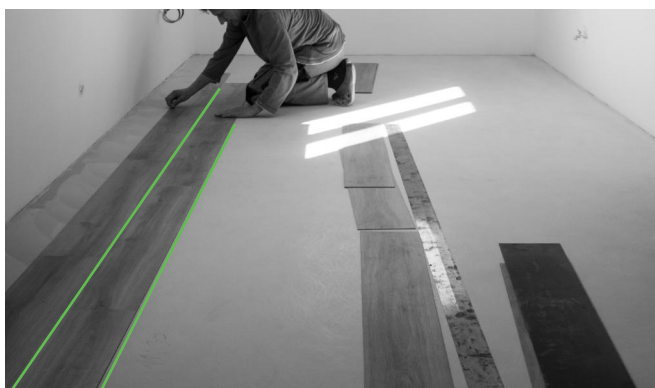
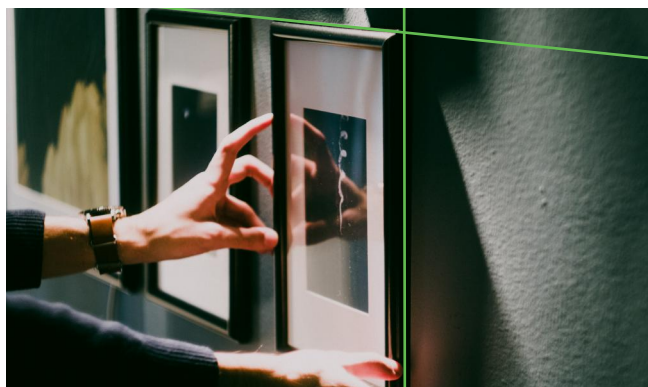
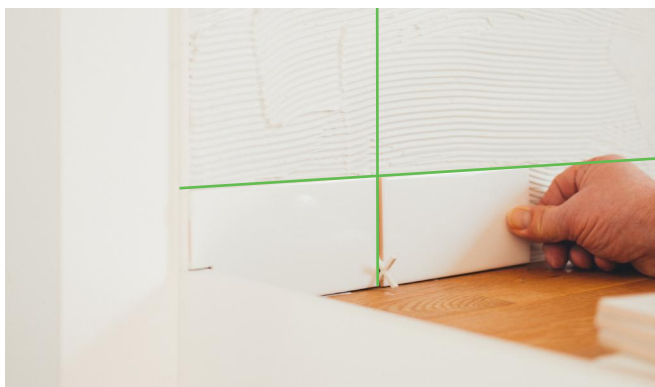
Connect the laser level to the rotating base with 1/4" thread.

knob ①&②: Rotate knob 1 or knob 2 to control the horizontal displacement of the laser.

knob ③: rotate knob 3 to control the rotation angle of the machine.



Place the machine horizontally on the lifting platform and turn the knob to control the rise and fall of the lifting platform.



PACKAGE INCLUDES

1 x Laser Level

2 x Battery pack

1 x Upper wall bracket and iron plate

1 x Remote control

1 x Lifting platform

1 x Rotating base

1 x Charger

1 x Portable bag

ATTENTION:

1. Please read this manual carefully before using the instrument.
2. The instrument should not be exposed to the sun.
3. When using the instrument, make sure that the instrument is firmly connected with the tripod.
4. When the instrument is loaded into the instrument, lock the locking switch of the instrument and keep the instrument dry all the time.
5. After using the instrument in wet and rainy days, the surface of the instrument should be wiped dry, and placed in a ventilated environment to dry thoroughly before packing.
6. When wiping the instrument surface, do not use alcohol, ethanol and other corrosive chemical solvents.

- 7.If the instrument is not used for a long time,take out the battery.
- 8.When the instrument is not used for a long time after 6 month,it should be sent back to the maintenance point for re calibration to ensure the accuracy of the instrument.

Daily Maintenance and Precautions

- 1.Please store the machine in a dry,ventilated,constant temperature and dust-free place.
- 2.Please wipe the shell glass frequently to ensure light transmission
- 3.When not in use for a long time,please release the locking switch regularly for half an hour to ensure that the bearing swings flexibly.
- 4.Please pay attention to lock the locking switch after use.
- 5.Do not leave the battery in the machine to avoid the leakage of battery liquid.
- 6.Do not look directly at the laser line.Use with protective glasses.
- 7.Do not wipe the instrument with organic solvent.
- 8.Non professionals,please do not disassemble the machine.
- 9.Please avoid violent vibration,collision and falling of the machine.

Safety Precautions

Do not look directly at the laser beam.

- 1.Class II laser products are harmless to human body.
- 2.Heavy pressure and vibration are strictly prohibited.
- 3.The product shall be placed in a ventilated,dry,heat insulated and fireproof warehouse,and it is strictly forbidden to connect with corrosive articles.
- 4.The loading,unloading and use of the products are suitable for handing with care and shall not be thrown or dropped.



Handle With Care

Tips

1. After the receiving switch is turned on, the bubble backlight will flash, which is a normal signal indicating that the receiving state.
2. The laser line flickers to prove that the machine is not in the safe and level range. Please adjust the level through the outrigger.
3. If the laser line is blurred, please wipe the shell glass with clean cotton cloth.
5. Do not leave the battery in the machine to avoid the leakage of battery liquid.
6. Do not look directly at the laser line. Use with protective glasses.
7. Do not wipe the instrument with organic solvent.
8. Non professionals, please do not disassemble the machine.
9. Please avoid violent vibration, collision and falling of the machine.

The following conditions are not covered during the warranty period

- Man made damage caused by improper use.
- Any product that has been remodeled and repaired by itself.
- The product is damaged after being sold due to improper transportation.
- Replacement of easily worn parts.
- Damage caused by failure to use our original accessories as required.
- Any natural wear and tear.

Warranty

The product supports a 1-year warranty from the date of purchase.

This warranty does not apply to products that have been lost, altered, broken, or damaged by misuse orv failure to follow the instruction provided with the product. Never try to repair the product by yourself. For any inquiries concerning our products, please contact our after-sales team via hardell.service@gmail.com , we are free to help you solve your problem at anytime.