







## RIVET NUT TOOL



Thank you for purchasing this product. To ensure proper use and trouble-free operation, please read this guide carefully before operating. If there is any issue, please contact us via Amazon or email: [hardell.service@gmail.com](mailto:hardell.service@gmail.com), we will help you within 12 hours.

# Package Include

Parts	Name & Quantity
	Rivet nut tool * 1
	100 nuts (10-24 * 20pcs, M6 * 20pcs, 5/16-18 * 20pcs, M8 * 10pcs, M10 * 10pcs, 1/4-20 * 10pcs, 3/8-16 * 10pcs)
	7 Metric & Inch Mandrels M6 M8 M10, 1/4-20, 5/16-18, 3/8-16, 10-24
	Wrench * 1, Carrying Case * 1, Sheath * 1

# Specification

Name	Rivet Nut Tool	Main Material	Aluminum alloy
Spec.	14 Inches	Length	360mm
Width	130mm	Weight	2.3Kg

# HOW TO CHANGE THE MANDREL



Remove nosepiece by unthreading the nosepiece counterclockwise. This can be either by hand or with the spanner if too tight..



Use the sharp point of the spanner to detach the cross pin.



Pull the mandrel out of the hole.

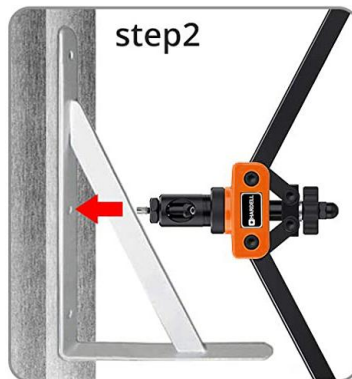


Only take a few seconds to easily replace another mandrel.

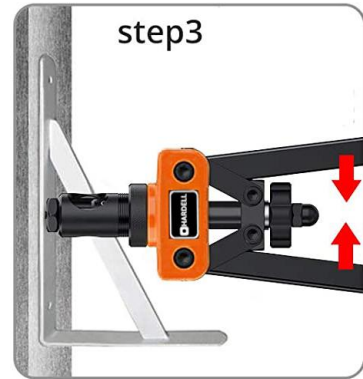
# HOW TO USE



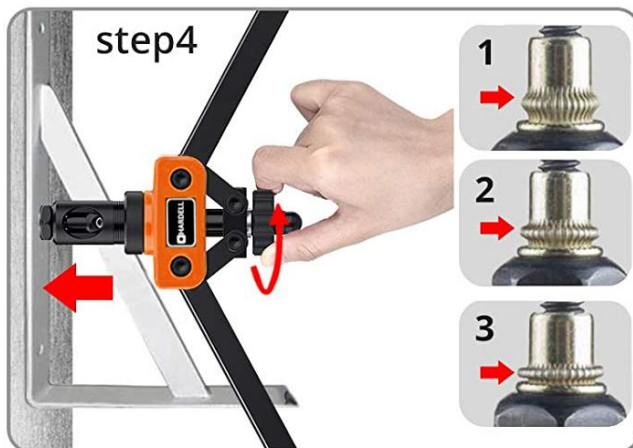
Install the nut on the mandrel, make sure the arms are completely opened.



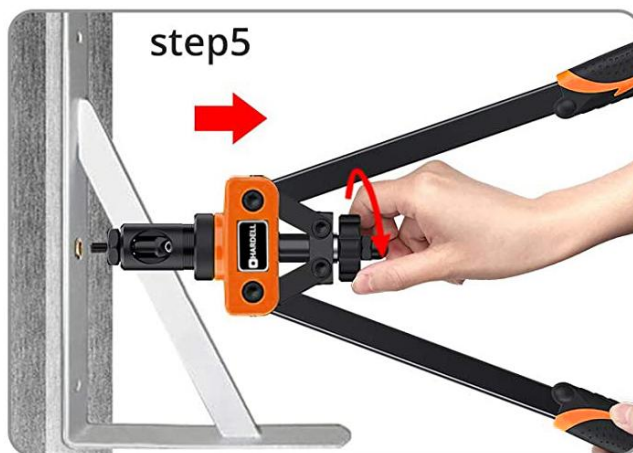
Insert the rivet nut into the hole.



Press the arm to rivet the nut in place.



Repeat Step 2/3/4 at least 2-3 times to ensure that the nut is fully tightened.



Turn the rod to unload the rivet gun.