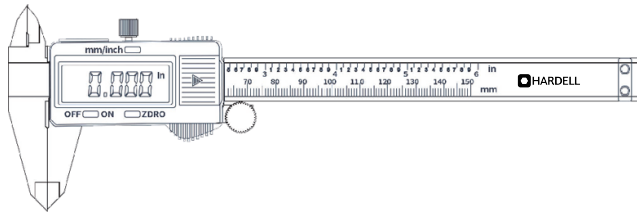




DIGITAL CALIPER

USER MANUAL



4.Q&A

Common Faults	Possible Reasons	Solution
Unstable or no digital display	Battery exhausted or poor battery contact	Replace the battery or adjust the negative electrode with tweezers
The digital zero does not move	Zero setting button does not reset	1.Check if it is used correctly 2.Disassemble the case and adjust the ZERO button
Millimeter and inch not converted	The "mm/inch" setting button does not reset	Disassemble the case and adjust the mm/inch button.
Digital display irregularities	Caliper is wet with moisture	Wipe the caliper surface with gauze or disassemble it to clean the dirt.
1 YEAR QUALITY PROMISE	Problem unsolved, please contact customer service:hardell.service@gmail.com	



Thank you for purchasing this product.To ensure proper use and trouble-free operation, please read this guide carefully before operating. If there is any issue, please contact us via Amazon or email: hardell.service@gmail.com, We will help you within 12 hours.

1.Nomenclature



2.Technical Specifications:

Measurement range:0-150mm/6"

Resolution:0.01 mm/0.0005"

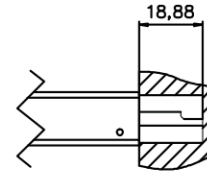
Accuracy: $\pm 0.03\text{mm}/0.001"$

Display:LCD screen

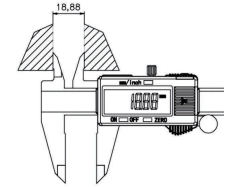
Power supply:1.5V LR44 battery

Working environmental temperature:0-40°C/104°F

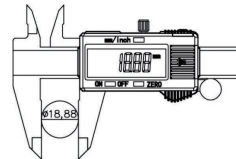
Operating temperature:0-40°C/104°F



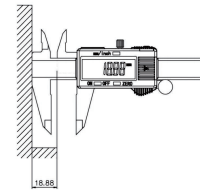
(A).Depth Measurement



(B).Internal Measuring Faces



(C).Length Measurement



(D).Step Measurement

3.Special Features:

- (1) With zero function, you can measure anything any time at any point with this electronic caliper.
- (2) Change the measuring mode(mm/inch) by pressing the "mm/inch" button.
- (3) Auto off if the caliper is idle for 5mins.
- (4) Made of high hardened stainless steel to ensure the digital caliper's durability.