



Instruction Manual

Lite (RE-100A)

Handheld UV Allergen Vacuum



Contents

Design for Safety..... 1

Use and Maintenance.. 2

Commitment to 3
Quality

- Please refer to the 'Safety Precautions' before use for details on how to stay safe and prevent damage.
- This RAYCOP is specifically designed for the US market. The use of this RAYCOP outside of US is not recommended.
- The exterior and specifications of this product are subject to change without prior notice.
- Keep this instruction manual for future reference.

UV Lamp Safety Sensor

- A safety feature that automatically turns off the UV lamp when your device is moved away from the surface. The UV lamp is automatically turned back on when your device is moved close to the surface again.

Run Time Control System

- After 29 minutes, an alarm begins to sound and the power button lamp flashes to warn you that RAYCOP will automatically switch OFF after 30 minutes.

HEPA Filter Replacement Alert

- RAYCOP will alert you when it is time to replace the HEPA filter. You will hear 5 alert chimes, and the red light on the power button (start flashing). This alert typically occurs after every 60 hours of use.

Motor Overheat Protection Operation

- If your device is continuously used for 30 minutes, the motor over-heating prevention device automatically stops suction to prevent overheating the motor. This may occur if the fabric filter of the dust box is clogged with dust.

UV (Ultraviolet) Light Blocking Feature

- Minimizes UV emitted to areas other than the area being cleaned.

Safety Precautions

All RAYCOP products are designed with the highest safety standards. IMPORTANT SAFETY INSTRUCTIONS. Read all instructions before using

⚠ WARNING : To reduce the risk of fire, electric shock, or injury:

USE

- Do not leave appliance when plugged in. Unplug from outlet when not in use and before servicing.
- Do not use outdoors or on wet surfaces
- Do not allow to be used as a toy. Pay close attention when used by or near children.
- Use only as described in this manual. Use only manufacturer's recommended attachments.
- Do not use with damaged cord or plug. If appliance is not working as it should, has been dropped, damaged, left outdoors, or dropped into water, return it to a service center.
- Do not pull or carry by cord, use cord as a handle, close a door on cord, or pull cord around sharp edges or corners. Do not run appliance over cord. Keep cord away from heated surfaces.
- Do not unplug by pulling on cord. To unplug, grasp the plug and pull, not the cord.
- Do not handle plug or appliance with wet hands.
- Do not put any object into openings. Do not use with any opening blocked; keep free of dust, lint, hair, and anything that may reduce air flow.
- Keep hair, loose clothing, fingers, and all parts of body away from openings and moving parts.
- Turn off all controls before unplugging.
- Do not use to pick up flammable or combustible liquids, such as gasoline, or use in areas where they may be present.
- Always turn off this appliance before connecting or disconnecting motorized nozzle.
- Do not pick up anything that is burning or smoking, such as cigarettes, matches, or hot ashes.
- Do not use without dust box and/or filters in place.

SAVE THESE INSTRUCTIONS

- To reduce the risk of electric shock, this appliance has a polarized plug (one blade is wider than the other). This plug will fit in a polarized outlet only one way. If the plug does not fit fully in the outlet, reverse the plug. If it still does not fit, contact a qualified electrician to install the proper outlet. Do not change the plug in any way.

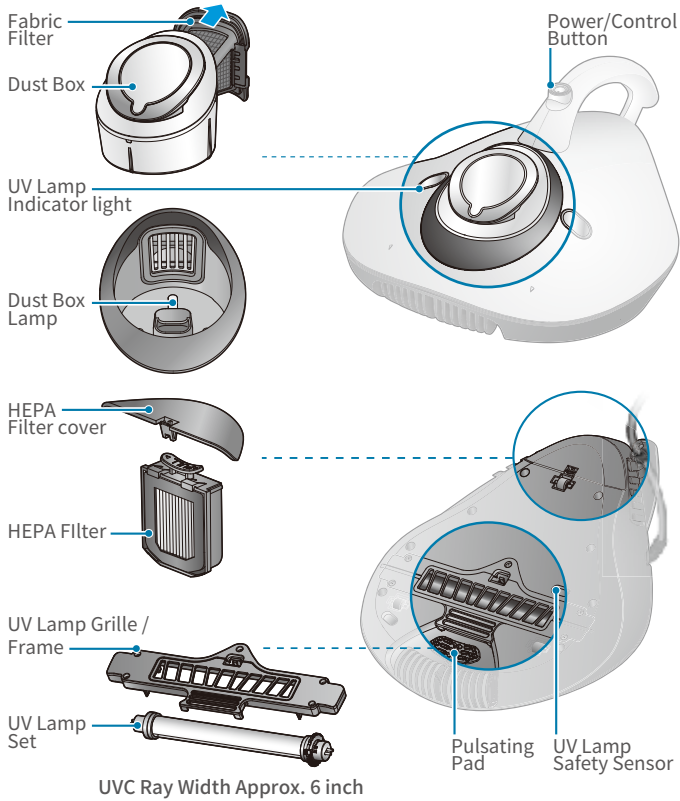
UV Lamp Caution

- Direct exposure to ultraviolet radiation can cause serious burns to the skin and eyes.
- Do not touch the UV lamp during or immediately after use.
- Do not directly emit the ultraviolet light from the UV lamp towards the eyes or skin of humans and/or animals.
- UV-C bulbs contain mercury, which is considered hazardous waste and is subject to federal and/or state hazardous waste regulations.
 - In rare instances, (similar to standard florescent light bulbs) mercury leakage could occur if the bulb breaks and could cause birth or reproductive issues.
- Please keep the UV lamp protective tube clean.
 - Inadequate and infrequent maintenance may lower the transmission of ultraviolet light.

Other Precautions

- Do not use or store heating appliances such as stoves or heaters, nor flammable substances such as combustible sprays near this product.
- Do not vacuum knives, thumbtacks, burning ash, toner powder or other inappropriate materials.
- If you notice any abnormal noise, odors, or smoke emanating from this product, immediately remove the power plug.
- Please visit raycop.com/faq for specific instructions on proper cleaning and maintenance practices.
 - This product is intended primarily for household use on mattresses, bed covers, bedding, pillows, cushions, sofas, and other upholstery products.
- Do not use for outdoor purposes or on metal, leather, wood, liquids or other non fabric surfaces.

1 Getting to know RAYCOP LITE

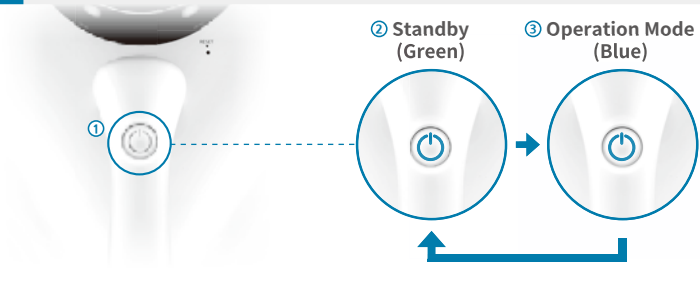


REMINDER:

When it's time to replace your parts, please use genuine RAYCOP parts.

To order please visit www.raycop.com or contact us at support@raycop.com

2 How to Start

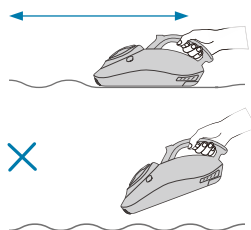


- ① Power Button
- ② Standby (green light)
Plug the power plug into the outlet and green color indicator appears on the power button.
- ③ Operation Mode (blue light)
Push the power button and the vacuum will start to operate with the button turning blue.

3 How to Use

RAYCOP allergen vacuums are designed to be sturdy to ensure stability and durability, but you'll quickly see how easily your device glides on the surface. Slowly push and pull along the surface you want to clean 2 or 3 times. Once your device is laid flat on the surface, the UV light will turn on.

Direct contact on the surface ensures effective cleaning so do not lift or angle your device. If the device is lifted or angled, the UV light will automatically turn off.

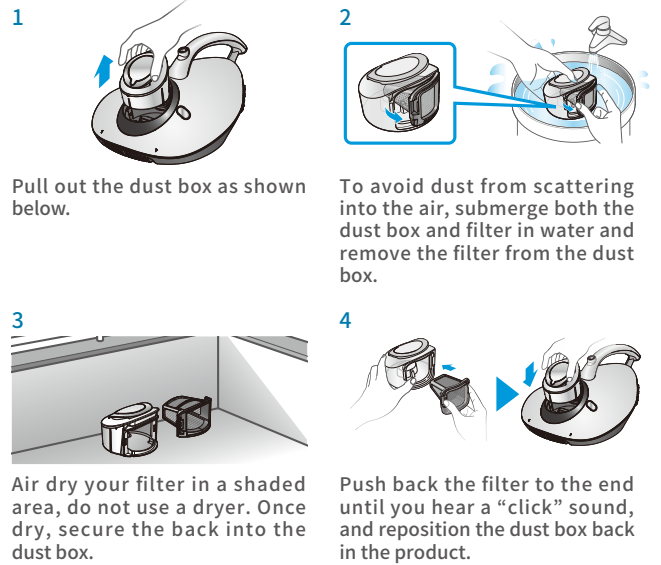


PLEASE NOTE:

The RAYCOP allergen vacuum was designed for home fabric surfaces and is not recommended on wall to wall carpeting, wood, leather or metal.

4 Maintenance

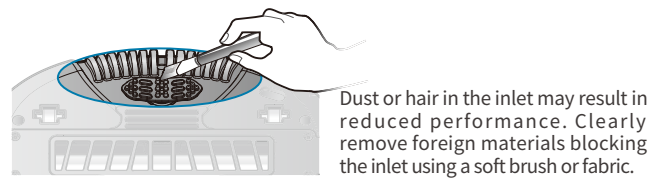
Dust box



NOTE:

If the filter is clogged, you may notice that the suction is weaker. Clean the filter with a mixture of water:detergent (ratio 9:1).

Inlet

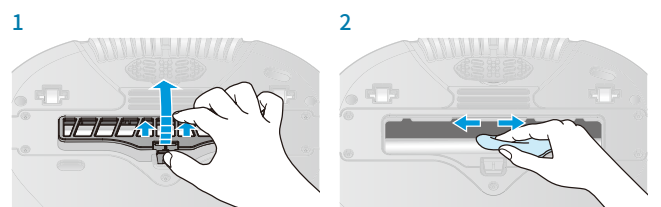


CAUTION: A blocked inlet may cause abnormal sounds or overheating, which may result in malfunction or fire.

WARNING: Before cleaning, ensure that RAYCOP is unplugged from the power outlet.

UV Lamp

Foreign substances clinging onto the lamp may reduce performance. Please clean the lamp on a regular basis.



CAUTION: When cleaning, please make sure the UV lamp protective tube is not broken.

WARNING: Before cleaning, ensure that RAYCOP is unplugged from the power outlet.

※ To order replacement parts such as the UV-lamp and HEPA filter, please visit raycop.com/parts

COMMITMENT TO QUALITY

Technical Specifications

Serial Number |

Warranty Period |

1 year from the date of purchase (parts and additional products are not included)

Size (mm) |

11 x 14 x 6in (300 x 352 x 150.5mm)

Weight |

Approximately 4lbs (1.95kg)

Power Consumption |

330W

UV-C Lamp |

6W (253.7nm)

Pulsating Pad |

3,300 RPM

Suction Mode |

1 Mode

Air Filtration |

Dust Box Filter + HEPA Filter

UV Light Safety Mechanism |

Two built-in Sensors for Surface Detection

Motor Safety |

Heat Detection with Automatic Cutoff Switch

RAYCOP North America Inc.

support@raycop.com

12667 Alcosta Boulevard,

San Ramon, CA 94583

866.872.9267

www.raycop.com

RAYCOP Limited One-Year Warranty

- The warranty period is valid one year from the date of original purchase.
- Follow the instructions below.
 1. Locate original sales receipt and make note of your model and serial number.
 2. Call RAYCOP at 866.8RAYCOP or 866.872.9267 or email us at support@raycop.com.
 3. You will be asked to provide your name, address, date of purchase, model and serial number.
 4. RAYCOP will arrange shipping boxes to be sent to your home to recover the product. Simply follow the instructions inside the box on how to send the device back to RAYCOP.

- RAYCOP warrants its product to be free from defects in material and workmanship for a period of one year from the date of the original purchase from RAYCOP or an authorized RAYCOP distributor. Proof of purchase is required for all warranty claims.

We thank you for being a customer of RAYCOP.

- This warranty does not cover damage, defects or failure caused by or resulting from accident, external destruction, alteration, modification, abuse, misuse or misapplication of this product.
- Please read all the documentations carefully to ensure RAYCOP was used as intended.

