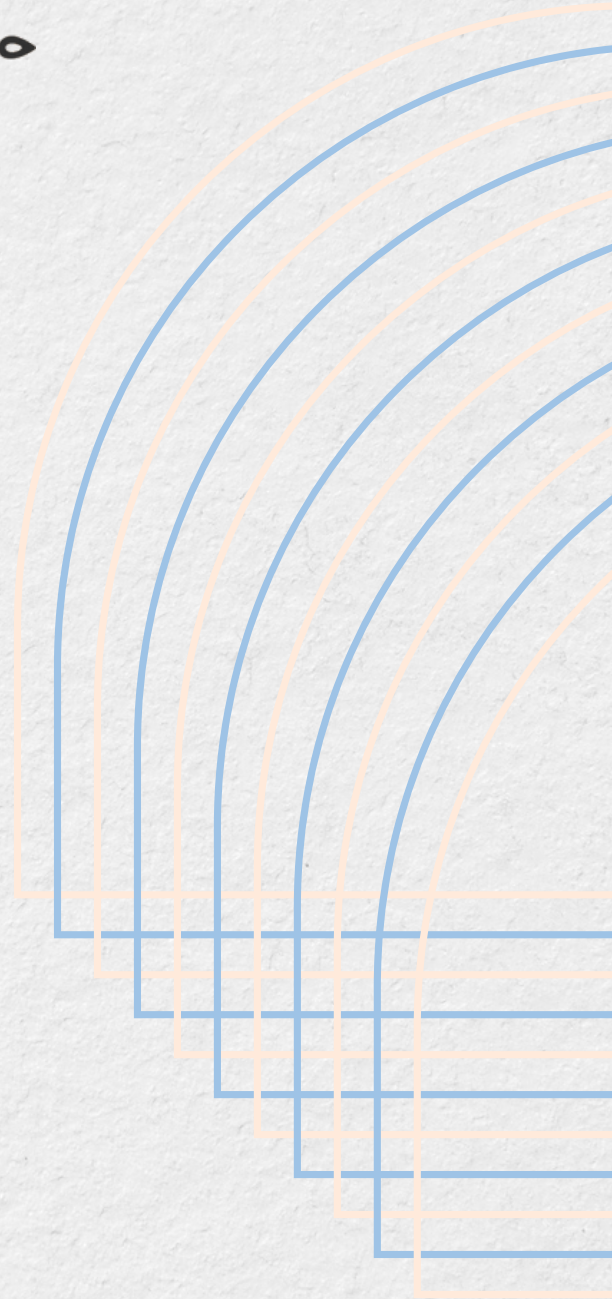


# HOME CREATOR



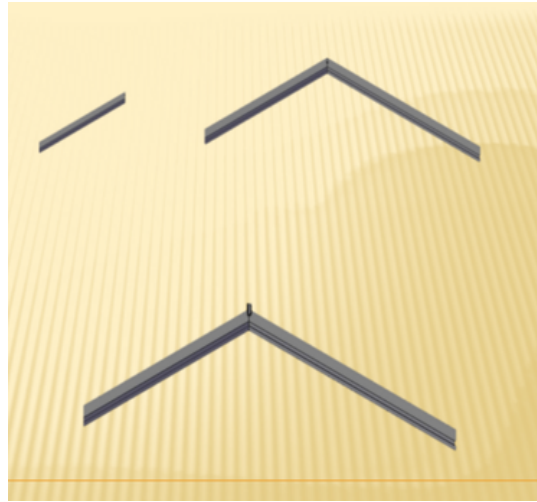
## Plantation Shutters Installation Guide

[www.homecreator.com.au](http://www.homecreator.com.au)



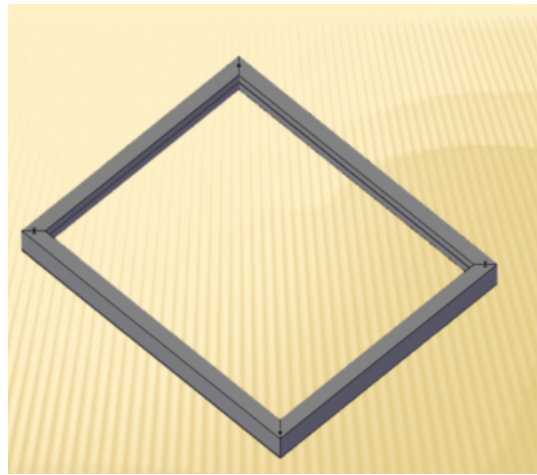
1-1, Put shutter's front frame to the floor which is covered with carpet or blanket.

1-2, 3, Connect frames from left(L), top(T), right(R) and bottom(B) with Hoffman keys and make them flat and tight with hammer.



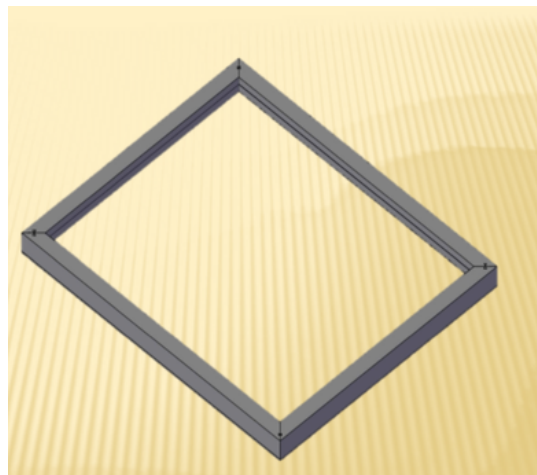
1-1 1-2 1-3

2-1 Fitted frames as shown in 2-1



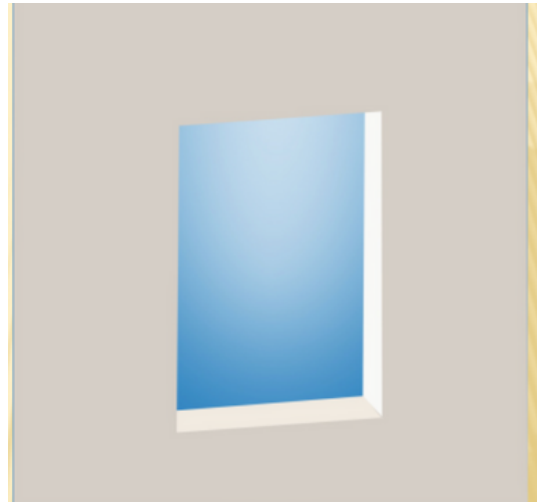
2-1

2-2 Place fitted frames from L, T, R, B.



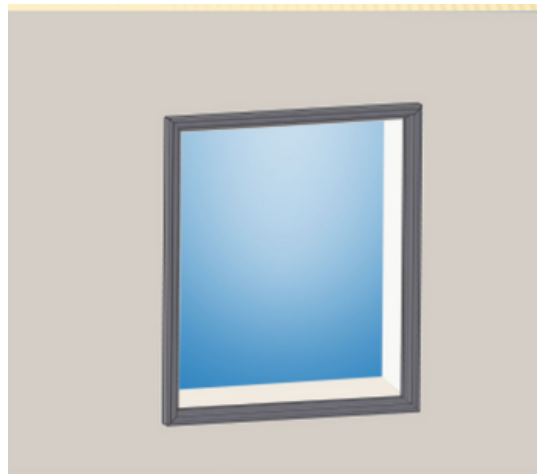
2-2

3-1 Fitting on window architrave or wall.



3-1

3-2 Fit frames to window architraves or wall.



3-2

3-3 Fit frames to window architraves or wall with 50mm screws around window.



3-3

3-4 Fit screws with screw driver into window architraves or wall until frames strong and flat.



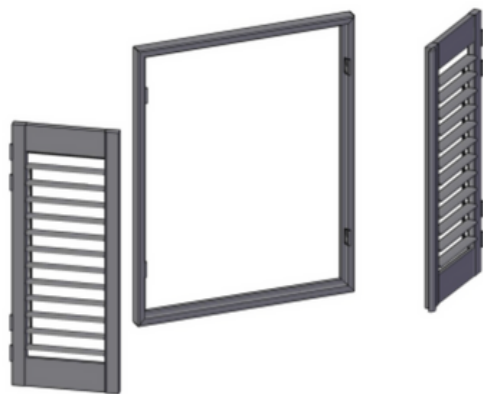
3-4

3-5 Fitted frames as shown in 3-5



3-5

4-1 In factory half hinges is fitted on frames and half on panels. It is easy to put panels onto frames with hinges together.



4-1

4-2 Put Left panel onto frames with hinges.



4-2

4-3 Put Right panel onto frames with hinges.



4-3